

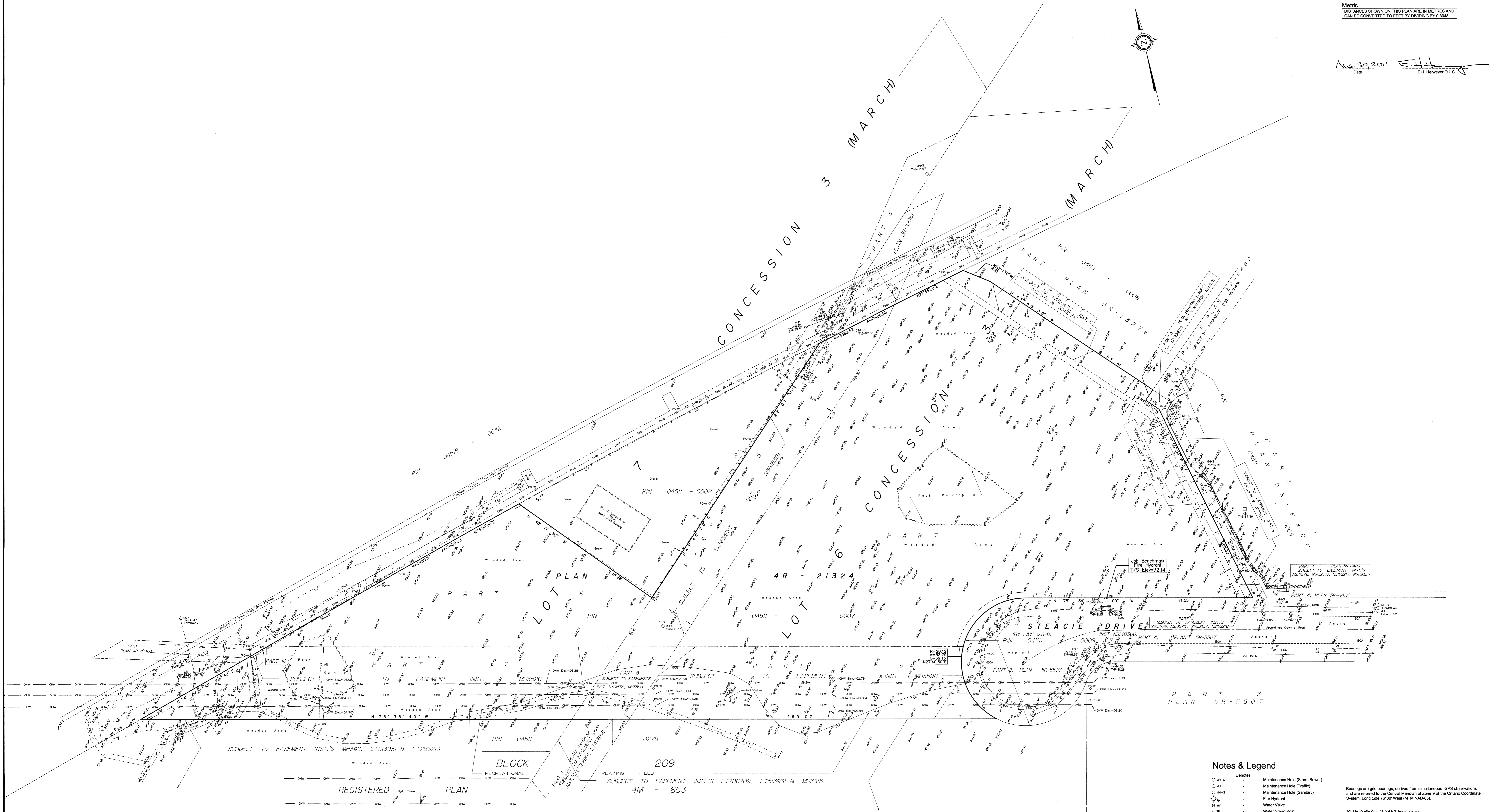
TOPOGRAPHICAL PLAN OF  
 PART OF LOTS 6 AND 7  
 CONCESSION 3  
 Geographic Township of March  
 CITY OF OTTAWA

Prepared by Annis, O'Sullivan, Vollebek Ltd.



Metric  
 DISTANCES SHOWN ON THIS PLAN ARE IN METRES AND  
 CAN BE CONVERTED TO FEET BY DIVIDING BY 0.3048

Aug 30 2011  
 Date  
 E.H. Herweyer O.L.S.  
 E.H.



Notes & Legend

- Denotes**
- M-11 Maintenance Hole (Storm Sewer)
  - M-1 Maintenance Hole (Traffic)
  - M-5 Maintenance Hole (Sanitary)
  - H Fire Hydrant
  - W Water Valve
  - WSP Water Stand Post
  - I Invert
  - T/S Anchor
  - T/P Top of Pipe
  - CA Top of Curb
  - LS Light Standard
  - CSP Corrugated Steel Pipe
  - B-T Ball Terminal Box
  - S Sign
  - CLF Chain Link Fence
  - SW Stone Retaining Wall
  - F&W Frost and Wire
  - W-P Wood Pole
  - E Location of Elevations
  - C/L Contourline
  - D-W Downcast Wires
  - EOA Edge of Asphalt
  - BOC Bottom of Curb
  - TOS Top of Slope
  - BOS Bottom of Slope
  - EGS Edge of Gravel
  - V-C Valve Chamber (Watermain)
  - CB Catch Basin
  - P-L Property Line

Bearings are grid bearings, derived from simultaneous GPS observations and are referred to the Central Meridian of Zone 18 of the Ontario Coordinate System, Longitude 76°30' West (MTM NAD-83).

SITE AREA = 2.2451 Hectares  
 BOUNDARY INFORMATION DETERMINED FROM PLANS 4R-20982, 4R-21324, SR-5507, SR-6480, SR-10081 & SR-13276.

**ELEVATION NOTES**  
 1. Elevations shown are referred to geodetic datum.  
 2. It is the responsibility of the user of this information to verify that the job benchmark has not been altered or disturbed and that its relative elevation and description agrees with the information shown on this drawing.  
 3. OHW elevations are determined to the lowest high voltage wire.

**UTILITY NOTES**  
 1. This drawing cannot be accepted as acknowledging all of the utilities and it will be the responsibility of the user to contact the respective utility authorities for confirmation.  
 2. Only visible surface utilities were located.  
 3. A field location of underground plant by the pertinent utility authority is mandatory before any work involving breaking ground, probing, excavating etc.

© Annis, O'Sullivan, Vollebek Ltd. 2011. THIS PLAN IS PROTECTED BY COPYRIGHT.  
**ANNIS, O'SULLIVAN, VOLLEBEK LTD.**  
 14 Concourse Gate, Suite 500  
 Niagara, Ont. N2E 7S6  
 Phone: (613) 777-0850 / Fax: (613) 777-1079  
 Email: [Annis@annisov.com](mailto:Annis@annisov.com)  
**Land Surveyors** (Ont. Reg. No. 2029) (Eng. Reg. No. 27, 28, 29, 30, 31, 32)