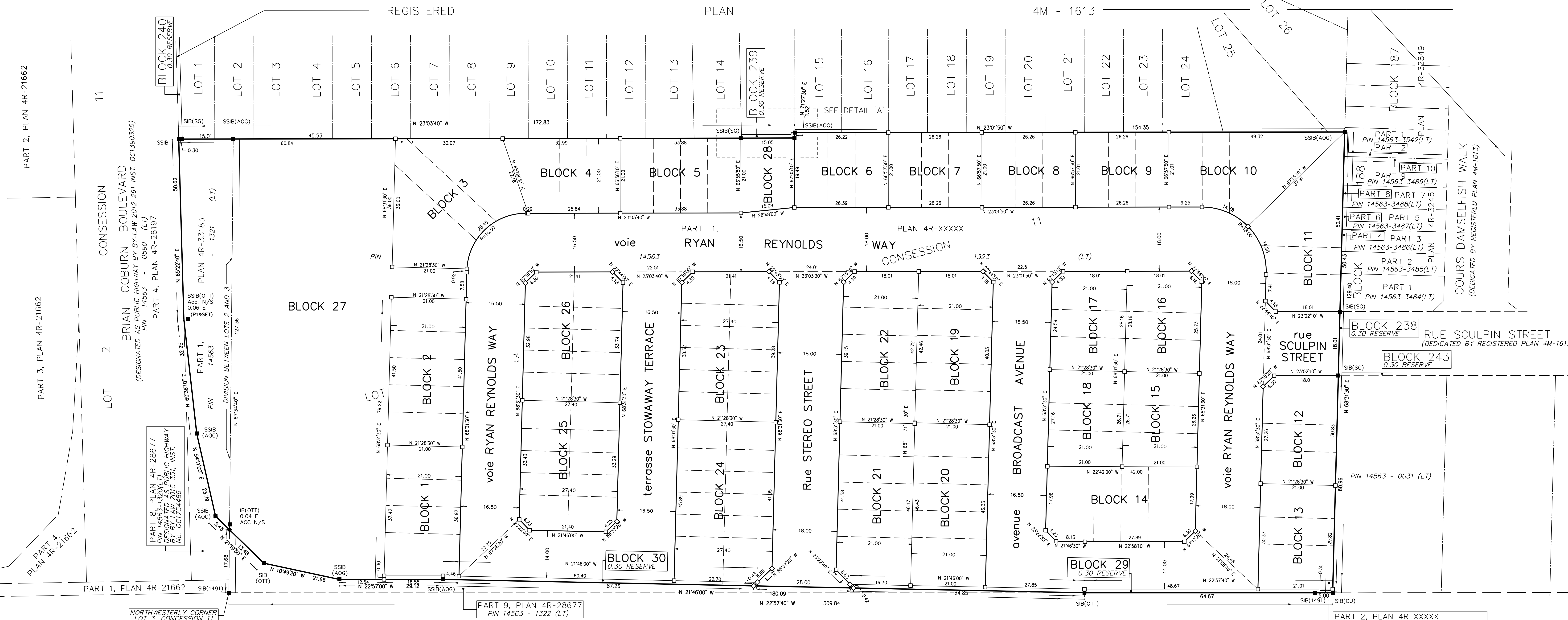
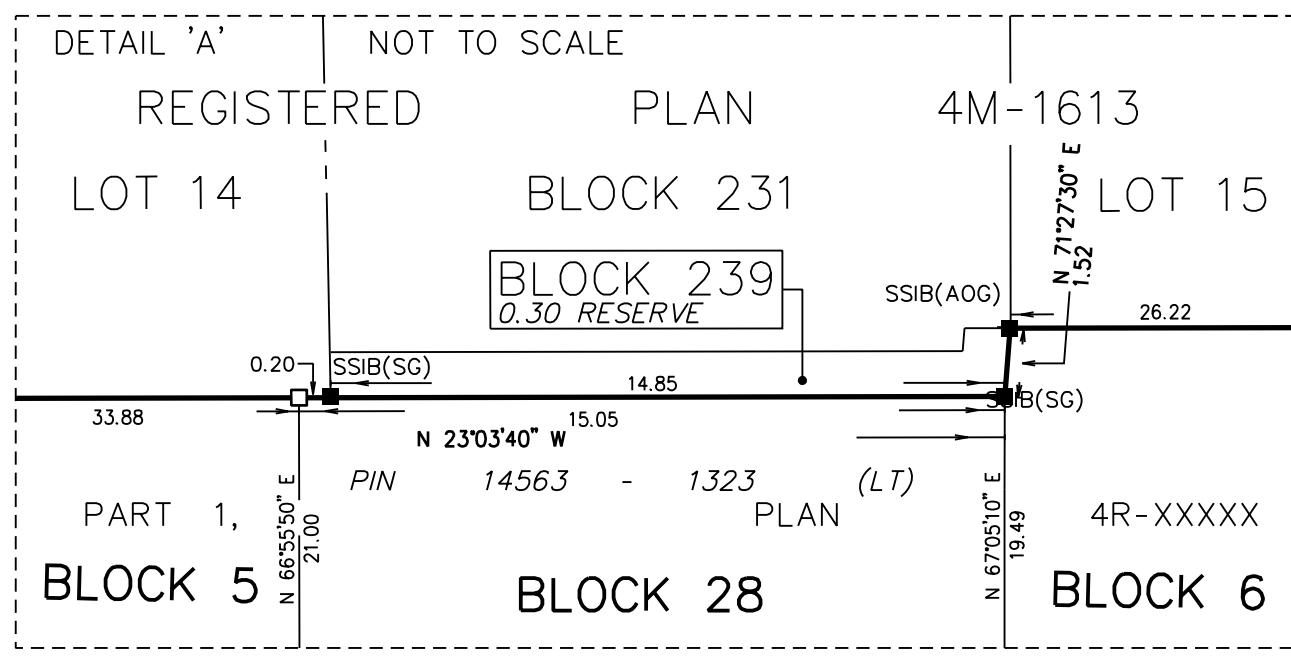
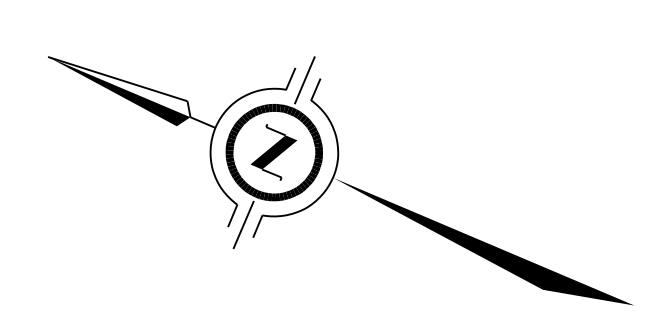


CURVE TABLE with columns: LOT/BLOCK, RADIUS, ARC, CHORD, BEARING. Rows include BLOCK 3, BLOCK 10, BLOCK 11, BLOCK 27.

APPROVED UNDER SECTION 51 OF THE PLANNING ACT BY THE CITY OF OTTAWA THIS ... DAY OF ... 2022. STEPHEN WILLIS, M.C.P., R.P.P. GENERAL MANAGER.

PLAN 4M-... I CERTIFY THAT THIS PLAN IS REGISTERED IN THE LAND REGISTRY OFFICE FOR THE LAND TITLES DIVISION OF OTTAWA-CARLETON (No. 4) AT ... O'CLOCK ON THE ... DAY OF ... 2022 AND ENTERED IN THE PARCEL REGISTER FOR PROPERTY IDENTIFIER ... AND THE REQUIRED CONSENTS ARE REGISTERED AS PLAN DOCUMENT No. ... LAND REGISTRAR.



THIS PLAN COMPRISES ALL OF PINS 14563-1321(LT) AND 14563-1323(LT)

PLAN OF SUBDIVISION OF PART OF LOTS 2 AND 3 CONCESSION 11 (GEOGRAPHIC TOWNSHIP OF CUMBERLAND) NOW IN THE CITY OF OTTAWA

SCALE 1 : 500 METRIC DISTANCES AND/OR COORDINATES SHOWN ON THIS PLAN ARE IN METRES AND CAN BE CONVERTED TO FEET BY DIVIDING BY 0.3048. J.D. BARNES LIMITED.

OWNER'S CERTIFICATE - PLAN OF SUBDIVISION. THIS IS TO CERTIFY THAT: 1. BLOCKS 1 TO 28 BOTH INCLUSIVE, THE STREETS NAMELY: Rue SCULPIN STREET, avenue BROADCAST AVENUE, Rue RYAN REYNOLDS WAY, terrasse STOWAWAY TERRACE AND Rue STEREO STREET AND THE 0.30m RESERVE NAMELY BLOCKS 29 TO 30 BOTH INCLUSIVE, HAVE BEEN LAID OUT IN ACCORDANCE WITH OUR INSTRUCTIONS. 2. THE STREETS ARE HEREBY DEDICATED TO THE CITY OF OTTAWA AS PUBLIC HIGHWAYS. DATED THIS ... DAY OF ... 2022.

Caïvon (Mer Bleue) Inc. FRANK CAIRO (PRESIDENT) I HAVE THE AUTHORITY TO BIND THE CORPORATION.

NOTES: BEARINGS ARE XT.M GRID, DERIVED FROM SPECIFIED CONTROL POINTS (SCPs) XXXXXXXXXX AND XXXXXXXXXX, XT.M ZONE 09, NAD83 (ORIGINAL). DISTANCES ARE GROUND AND CAN BE CONVERTED TO GRID BY MULTIPLYING BY THE COMBINED SCALE FACTOR OF 0.999967. INTEGRATION DATA: SPECIFIED CONTROL POINTS (SCPs); MTM ZONE 09, NAD83 (ORIGINAL). COORDINATES TO URBAN ACCURACY PER SECTION 14 (2) OF O.REG 216/10. LEGEND: SURVEY MONUMENT FOUND, SURVEY MONUMENT SET, STANDARD IRON BAR, SHORT STANDARD IRON BAR, IRON BAR, PLASTIC BAR, WITNESS, MEASURED, J.D. BARNES LIMITED, ANNS, O'SULLIVAN, VOLLEBEKK LTD., STANTEC GEOMATICS, CITY OF OTTAWA, D. DUTRISAV, O.L.S.

LEGEND: SURVEY MONUMENT FOUND, SURVEY MONUMENT SET, STANDARD IRON BAR, SHORT STANDARD IRON BAR, IRON BAR, PLASTIC BAR, WITNESS, MEASURED, J.D. BARNES LIMITED, ANNS, O'SULLIVAN, VOLLEBEKK LTD., STANTEC GEOMATICS, CITY OF OTTAWA, D. DUTRISAV, O.L.S. ALL SET SSIB AND PB MONUMENTS WERE USED DUE TO LACK OF OVERBURDEN AND/OR PROXIMITY OF UNDERGROUND UTILITIES IN ACCORDANCE WITH SECTION 11 (4) OF O.REG. 324/01. SURVEY MONUMENTS PLANTED ARE IRON BARS UNLESS OTHERWISE NOTED. DISTANCES SHOWN ON CURVED LIMITS ARE ARC MEASUREMENTS. SURVEY MONUMENTS FOUND ARE J.D. BARNES LIMITED UNLESS OTHERWISE NOTED. RESERVE BLOCKS EXAGGERATED FOR CLARITY.

SURVEYOR'S CERTIFICATE: I CERTIFY THAT: 1. THIS SURVEY AND PLAN ARE CORRECT AND IN ACCORDANCE WITH THE SURVEYS ACT, THE SURVEYORS ACT AND THE LAND TITLES ACT AND THE REGULATIONS MADE UNDER THEM. 2. THE SURVEY WAS COMPLETED ON ... 2022.

DATE: ... C.M. FOX, ONTARIO LAND SURVEYOR.

J.D. BARNES SURVEYING MAPPING GIS LAND INFORMATION SPECIALISTS. DRAWN BY: CE, CHECKED BY: CF, REFERENCE NO.: 20-10-178-00 V5.0, PLOTTED: 1/31/2022, DATED: 01/31/22.

FILE: G:\20-10-178\00\Drawings\M-Plan\05\20-10-178_M-PlanV5_0.dgn