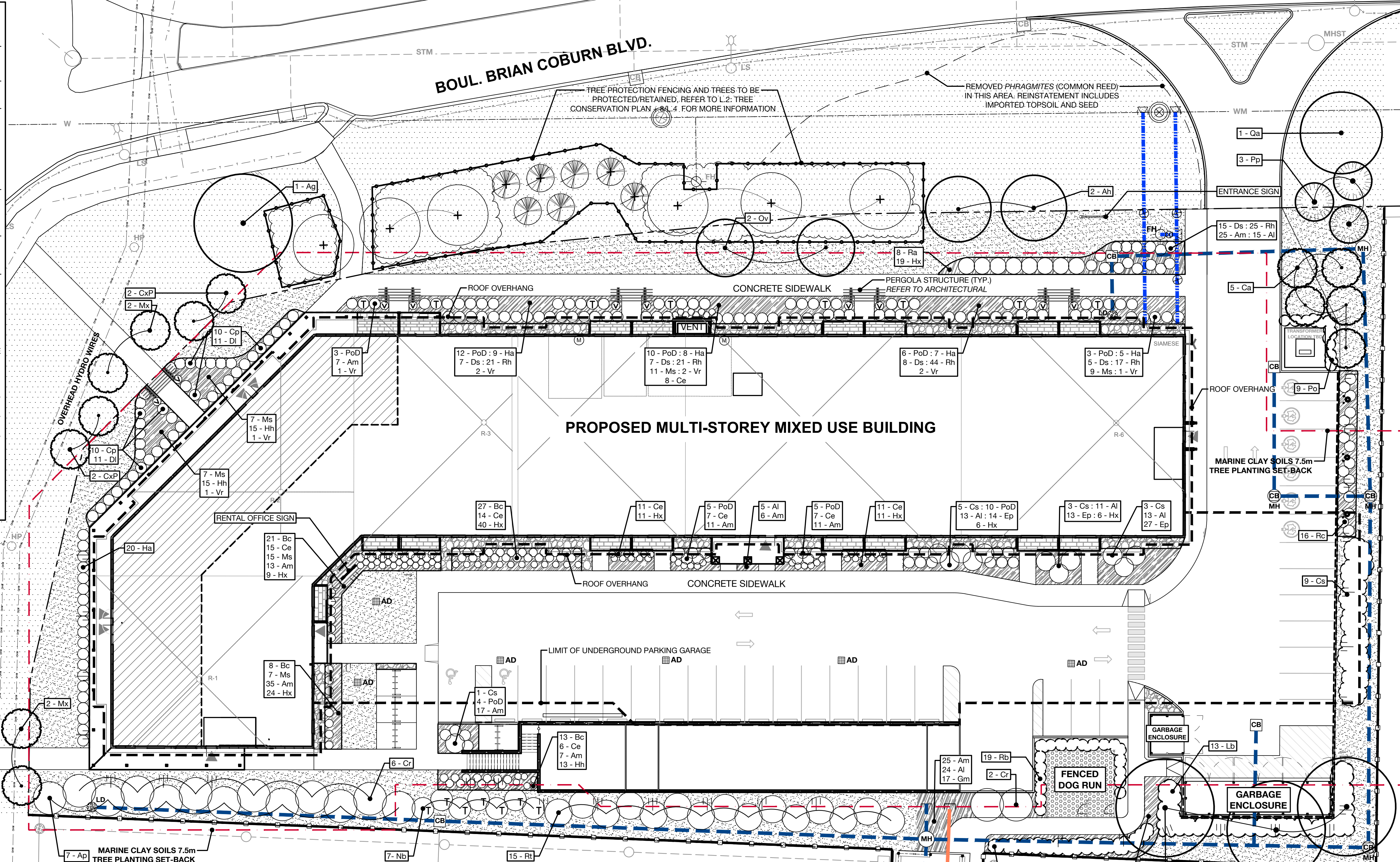


LEGEND

- PROPOSED SMALL - MEDIUM DECIDUOUS TREES (1.2 - 1.4)
- PROPOSED CONIFEROUS TREES (1.2 - 1.4)
- PROPOSED HEDGE OR SHRUB GROUP PLANTING (3 - 1.4)
- EXISTING TREES AND SHRUBS IN CITY RIGHT OF WAY TO BE PROTECTED AND RETAINED (3 - 1.4)
- PROPOSED PLANTING BED WITH PERENNIALS AND/OR ORNAMENTAL GRASSES WITH RIVER ROCK MULCH (4 - 1.4)
- PROPOSED PLANTING BED WITH SHRUBS, PERENNIALS, VINES AND/OR ORNAMENTAL GRASSES WITH RIVER ROCK MULCH (3.4 - 1.4)
- PROPOSED RIVER ROCK MULCH (5 - 1.4)
- PROPOSED SOD (6 - 1.4)
- PROPOSED SEED (6 - 1.4)
- PROPOSED CRUSHED LIMESTONE (6 - 1.4)
- PROPOSED DECOMPOSED / CRUSHED GRANITE (6 - 1.4)
- PATIO SURFACE: REFER TO ARCHITECTURAL (6 - 1.4)
- PROPOSED CHAIN LINK FENCE + GATE (6.7 - 1.4)
- PROPOSED TREE PROTECTION FENCE (8 - 1.4)
- PROPOSED WOOD PRIVACY FENCE (8 - 1.4)
- 7.5 m TREE PLANTING SET-BACK (8 - 1.4)
- PROPOSED U/G WATERMAIN ** (8 - 1.4)
- PROPOSED U/G SANITARY ** (8 - 1.4)
- PROPOSED U/G STORM ** (8 - 1.4)
- ** REFER TO ENGINEERING FOR ALL EXISTING AND PROPOSED UTILITIES



JOHN SEVIGNY C.E.T.
MANAGER (A), DEVELOPMENT REVIEW EAST
PLANNING, DEVELOPMENT & BUILDING SERVICES
DEPARTMENT, CITY OF OTTAWA

APPROVED
 By sevignyo at 11:55 am, Feb 20, 2025

PROPOSED PLANT LIST - SHRUBS, PERENNIALS, ORNAMENTAL GRASSES AND VINES

KEY	QTY	BOTANICAL NAME	COMMON NAME	NATIVE	CAL/HT.	MATURE HT.	CONDITION/REMARKS
Ap	7	<i>Aesculus parviflora</i>	Bottlebrush Buckeye	N	100 cm ht.	3-4 m	Potted
Bc	66	<i>Aronia melanocarpa</i>	Black Chokeberry	Y	50 cm ht.	1.5-1.75 m	2 Gal. - Potted
Cp	20	<i>Comptonia peregrina</i>	Sweet Fern	Y	50 cm ht.	0.3 - 0.9 m	2 Gal. - Potted
Cr	6	<i>Cornus racemosa</i>	Gray Dogwood	Y	100 cm ht.	3-4 m	2 Gal. - Potted
Cs	21	<i>Cornus sericea</i>	Red Osier Dogwood	Y	50 cm ht.	1.75 - 2 m	2 Gal. - Potted
Ds	42	<i>Diervilla splendens</i> 'Firefly'	Firefly Bush Honeysuckle	C	50 cm ht.	0.8 - 1 m	2 Gal. - Potted
Di	22	<i>Diervilla lonicera</i>	Bush Honeysuckle	Y	50 cm ht.	0.8 - 1 m	2 Gal. - Potted
Ha	50	<i>Hydrangea arborescens</i> 'Annabelle'	Annabelle Hydrangea	N	100 cm ht.	1.25 - 1.5 m	2 Gal. - Potted
Lb	13	<i>Lindera benzoin</i>	Spicebush	Y	50 cm ht.	3-4 m	2 Gal. - Potted
Po	9	<i>Physocarpus opulifolius</i>	Common Ninebark	Y	50 cm ht.	1.75 - 2 m	2 Gal. - Potted
PoD	50	<i>Physocarpus opulifolius</i> 'Monio' - Diablo	Diablo Ninebark	C	50 cm ht.	1.75 - 2 m	2 Gal. - Potted
Ra	19	<i>Rhus aromatica</i>	Flragrant Sumac	Y	50 cm ht.	1.25 - 1.5 m	2 Gal. - Potted
Rb	7	<i>Rosa blanda</i>	Meadow Rose	Y	50 cm ht.	1.25 - 1.5 m	2 Gal. - Potted
Rc	16	<i>Rosa carolina</i>	Pasadena Rose	Y	50 cm ht.	1.5 - 1.75 m	2 Gal. - Potted
Rt	15	<i>Rhus typhina</i>	Staghorn Sumac	Y	100 cm ht.	2.5 - 3 m	2 Gal. - Potted

PROPOSED PLANT LIST - TREES

KEY	QTY	BOTANICAL NAME	COMMON NAME	NATIVE	CAL/HT.	MATURE HT.	OWNERSHIP	CONDITION/REMARKS
Ag	4	<i>Aesculus glabra</i>	Ohio Buckeye	Y	50 mm cal.	10-12 m	3P, 1 ROW	WB
Ah	2	<i>Carpinus caroliniana</i>	American Hornbeam	Y	50 mm cal.	8-10 m	City ROW	Clump - WB
Ca	5	<i>Cornus alternifolia</i>	Pagoda Dogwood	Y	150 mm ht.	4-5 m	Private	Clump - WB
CxP	4	<i>Cercis canadensis</i> 'Pink Heartbreaker'	Pink Heartbreaker Redbud	C	50 mm cal.	3-4 m	City ROW	Short Cultivar - Tree - WB
Mx	4	<i>Malus sargentii</i> 'Rosea'	Pink Sargent Crabapple	C	150 mm ht.	2-3 m	City ROW	Short Cultivar - Fruiting - WB
Ov	2	<i>Ostrya virginiana</i>	Ironwood	Y	50 mm cal.	10-12 m	Private	Large Canopy Tree
Qa	1	<i>Quercus alba</i>	White Oak	Y	50 mm cal.	18-22 m	City ROW	WB - Large Canopy Tree

PERENNIALS, ORNAMENTAL GRASSES AND VINES

KEY	QTY	BOTANICAL NAME	COMMON NAME	NATIVE	CAL/HT.	MATURE HT.	OWNERSHIP	CONDITION/REMARKS
Nb	7	<i>Viburnum lentago</i>	Nannyberry	Y	200 cm ht.	5-6m	Private	Tree Form - Potted
PoD	8	<i>Physocarpus opulifolius</i> 'Monio' - Diablo	Diablo Ninebark	C	150 cm ht.	1.75 - 2 m	Private	Potted - Tree Form
Pp	3	<i>Picea pungens</i> 'Fat Albert'	Fat Albert Spruce	N	200 cm ht.	7-10 m	1P, 2 ROW	WB

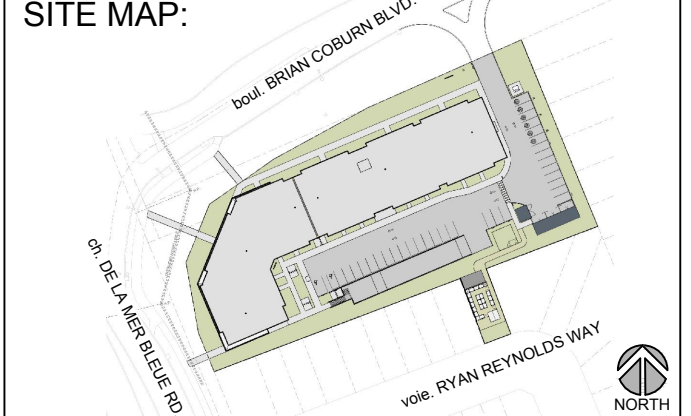
- #### PLANTING NOTES
- CONTRACTOR TO VERIFY LOCATION OF ALL UTILITIES PRIOR TO EXCAVATION.
 - LOCATION OF ALL PLANT MATERIAL TO BE STAKED BY THE CONTRACTOR AND VERIFIED IN THE FIELD BY THE PROJECT MANAGER PRIOR TO THE EXCAVATION OF TREE PITS AND PLANTING BEDS.
 - ALL PLANT MATERIAL SHALL BE NURSERY GROWN STOCK UNLESS OTHERWISE NOTED.
 - DECIDUOUS TREES TO HAVE A MINIMUM 1800mm CLEAR STEM ABOVE GRADE.
 - DECIDUOUS TREES TO HAVE A MINIMUM SETBACK FROM ALL BUILDING FOUNDATIONS IN ACCORDANCE WITH THE CITY OF OTTAWA TREE PLANTING IN SENSITIVE MARINE CLAY SOILS (2017) AND GEOTECHNICAL INVESTIGATION BY PATERSON GROUP: REPORT PG6526-1 REVISION 1, DATED MARCH 22, 2023.
 - ALL PLANT MATERIAL SHALL BE WARRANTED FOR TWO YEARS FROM THE DATE OF PERFORMANCE ACCEPTANCE AS DETERMINED BY THE PROJECT MANAGER.
 - CONTRACTOR TO MAKE GOOD ALL EXISTING AREAS DAMAGED BY HIS OR HER WORK TO THE SATISFACTION OF THE PROJECT MANAGER.
 - DECIDUOUS TREES TO HAVE A MINIMUM SETBACK FROM ALL BUILDING FOUNDATIONS IN ACCORDANCE WITH THE CITY OF OTTAWA TREE PLANTING IN SENSITIVE MARINE CLAY SOILS (2017) AND GEOTECHNICAL INVESTIGATION BY PATERSON GROUP: REPORT PG6526-1 REVISION 1, DATED MARCH 22, 2023.
 - ANY PROPOSED PLANT MATERIAL SUBSTITUTIONS SHALL BE MADE WITH PLANTS OF EQUIVALENT OVERALL FORM, HEIGHT, HABIT, FLOWER, LEAF, COLOUR AND CULTURE AND ONLY AFTER WRITTEN APPROVAL FROM THE PROJECT MANAGER AND CITY OF OTTAWA FORESTER.
 - ALL SOD AREAS TO RECEIVE A MINIMUM 150 mm OF IMPORTED TOPSOIL.
 - ALL SOD TO BE NUMBER ONE TURF GRASS NURSERY SOD THAT HAS BEEN ESPECIALLY SOWN AND CULTIVATED IN NURSERY FIELDS AS TURF GRASS.
 - THE SOIL VOLUMES PROVIDED ARE SUFFICIENT FOR A REASONABLE CHANCE OF TREE SURVIVAL, UNLESS OTHERWISE NOTED. ALL NEW TREES MEET THE MINIMUM SOIL VOLUME REQUIREMENTS OF THE FOLLOWING: BASED ON A DEPTH OF 1.5m BELOW FINISHED GRADE, AND SUBTRACTING THE VOLUME OF UTILITY TRENCHES. REFER TO L2 'SOIL VOLUMES PLAN'.



NOTE: CITY OF OTTAWA POLICY RE: PLANTING IN DEVELOPMENTS WITH CLAY SUBSOILS

- CONSIDERATION FOR TREE PLANTING IN MARINE CLAY SOILS HAVE BEEN MADE ACCORDING TO RECOMMENDATIONS PROVIDED BY PATERSON GROUP IN THEIR GEOTECHNICAL INVESTIGATION: PROPOSED MIXED-USE DEVELOPMENT, 2275 MER BLEUE ROAD, OTTAWA, ONTARIO. PREPARED FOR SEYMOUR PACIFIC DEVELOPMENTS (ONTARIO) LTD. REPORT PG6526-1 REVISION 1 DATED MARCH 22, 2023.
- BASED ON THIS REPORT (SECTION 6.8) , THE PLASTICITY INDEX WAS FOUND TO BE GREATER THAN 40% IN ALL THE TESTED SOIL SAMPLES. THIS RESULT INDICATES THERE IS HIGH POTENTIAL FOR SOIL VOLUME CHANGE. ALL SMALL TREES (UNDER 7.5m AT MATURE HEIGHT) MUST BE SETBACK 7.5m MINIMUM FROM THE BUILDING FOUNDATION. MEDIUM TREES (UNDER 14m AT MATURE HEIGHT) CAN ALSO BE SETBACK 7.5m MINIMUM, GIVEN THE FOLLOWING CONDITIONS ARE MET:
 - ALL TREES ARE PROVIDED ADEQUATE SOIL VOLUME: A SMALL TREE MUST BE PROVIDED WITH A MINIMUM OF 25 m³ OF AVAILABLE SOIL VOLUME WHILE A MEDIUM TREE MUST BE PROVIDED WITH A MINIMUM OF 30 m³ OF AVAILABLE SOIL VOLUME, AS DETERMINED BY THE LANDSCAPE ARCHITECT. THE DEVELOPER IS TO ENSURE THAT THE SOIL IS GENERALLY UN-COMPACTED WHEN BACKFILLING IN TREE PLANTING LOCATIONS.
 - THE GRADING SURROUNDING THE TREE MUST PROMOTE DRAINAGE TO THE TREE ROOT ZONE, IN SUCH A MANNER AS NOT TO BE DETRIMENTAL TO THE TREE, AS NOTED ON THE GRADING PLAN (PREPARED BY NOVATECH).
 - TREES SPECIFIED ARE NOT CONSIDERED TO BE 'FAST GROWING SPECIES' (ie. WILLOWS (Salix), POPLARS (Populus) AND MANITOBA MAPLE (Acer negundo)). THESE ARE NOT CONSIDERED ACCEPTABLE FOR THIS SITE AND ITS SUBSURFACE CONDITIONS

- #### GENERAL NOTES
- ALL LANDSCAPED AREAS TO BE IRRIGATED.
 - REFER TO ARCHITECTURAL DRAWINGS FOR ALL SITE FURNISHINGS AND SURFACING.
 - REFER TO ENGINEERING DRAWINGS FOR ALL SITE SERVICING.
 - ALL PROPOSED TREES ARE 1.5m MIN. FROM PROPERTY LINE.
 - EXISTING UTILITIES REFLECTED ON THIS PLAN ARE APPROXIMATE AND REQUIRE CONFIRMATION ON-SITE PRIOR TO PLANTING.
 - CITY OF OTTAWA TREE PLANTING SETBACKS ARE:
 - a) MAINTAIN 1.5m MIN. FROM SIDEWALK OR MUP / CYCLE TRACK OR WATER SERVICE LATERALS.
 - b) MAINTAIN 2.5m MIN. FROM CURB, 2.0m MIN. FROM WATERMAINS
 - c) CONIFEROUS SPECIES REQUIRE A 4.5m MIN. SETBACK FROM CURB, SIDEWALK OR MUP/ CYCLE TRACK/ PATHWAY.
 - d) MAINTAIN 7.5m MIN. BETWEEN LARGE GROWING TREES, AND 4m MIN. BETWEEN SMALL GROWING TREES



PROJECT STATUS:
 ISSUED FOR SPC SUBMISSION

Revision Schedule

No.	Description	Revision Date
1	ISSUED FOR CLIENT REVIEW	2023-07-07
2	ISSUED FOR SITE PLAN REVIEW	2023-11-03
3	ISSUED FOR SITE PLAN REVIEW	2024-04-29
4	ISSUED FOR SITE PLAN REVIEW	2024-06-04
5	ISSUED FOR SPC SUBMISSION	2024-08-06
6	ISSUED FOR SPC SUBMISSION	2024-10-25
7	ISSUED FOR SPC SUBMISSION	2024-11-26
8	ISSUED FOR SPC SUBMISSION	2024-11-28



TRADE CONTRACTORS SHALL VERIFY ALL DIMENSIONS AND REPORT ANY DISCREPANCIES OR INCONSISTENCIES TO SEYMOUR PACIFIC DEVELOPMENTS LTD., WITHOUT DELAY, FOR CLARIFICATION AND/OR CONFIRMATION. DO NOT SCALE DRAWINGS. DESIGNS REPRESENTED AND DRAWINGS USED AS INSTRUMENTS OF SERVICE SHALL REMAIN THE COPYRIGHT AND PROPERTY OF SEYMOUR PACIFIC DEVELOPMENTS LTD. ANY REPRODUCTION OR USE FOR ANY PURPOSE OTHER THAN THAT AUTHORIZED BY SEYMOUR PACIFIC DEVELOPMENTS LTD. IS PROHIBITED.

CONTRACTORS SHALL REMAIN FAMILIAR WITH, SHALL REFER TO, AND SHALL PERFORM IN ACCORDANCE WITH LOCAL LAWS, REGULATIONS AND BUILDING CODES. CONTRACTORS SHALL MAINTAIN GOOD INDUSTRY BUILDING AND SAFETY PRACTICES CONSISTENT WITH THE CONTRACT INTENT AND THE REQUIREMENTS OF JURISDICTIONAL AUTHORITIES.

ADDITIONAL CLAIMS AND COSTS RELATED TO NON-MATERIAL CHANGES WILL NOT BE ACCEPTED BY SEYMOUR PACIFIC DEVELOPMENTS LTD. NON-MATERIAL CHANGES ARE DEEMED TO BE PLAN CHANGES OR SPECIFICATION ADJUSTMENTS THAT DO NOT SUBSTANTIALLY AFFECT THE VALUE, TIME, COST AND QUALITY OF CONSTRUCTION.

CONTRACTORS SHALL MAKE EVERY REASONABLE EFFORT TO MAINTAIN SCHEDULE TARGETS AND PROVIDE GOOD EFFICIENCY, PROGRESS, WORKMANSHIP AND QUALITY TOWARD DEFICIENCY-FREE RESULTS.

PROJECT NAME:
CASSETTE COMMONS

PROJECT NUMBER:
 CITY OF OTTAWA:

ADDRESS:
 2275 MER BLEUE ROAD
 OTTAWA, ON

DRAWING TITLE:
LANDSCAPE PLAN

DRAWN BY: K. SELIN
 CHECKED BY: K. CERVENY
 DATE: 2024-11-28
 SCALE: 1:200
 DRAWING #: **L.1**
 REV #:

LEGEND

PLANTING TRENCH FOR MEDIUM TREES WITH 30m³ MIN. SOIL VOLUME AS PER CITY OF OTTAWA GUIDELINE: TREE PLANTING FOR SENSITIVE MARINE CLAY SOILS (DATED 2017). EXCAVATE THIS AREA 1.5m MIN. TO PROVIDE ADEQUATE SOIL FOR TREE GROWTH

PLANTING TRENCH FOR SMALL TREES WITH 25m³ MIN. SOIL VOLUME AS PER CITY OF OTTAWA GUIDELINE: TREE PLANTING FOR SENSITIVE MARINE CLAY SOILS (DATED 2017). EXCAVATE THIS AREA 1.5m MIN. TO PROVIDE ADEQUATE SOIL FOR TREE GROWTH

AREAS WHERE THE PLANTING TRENCH SHOULD BE EXTENDED/MODIFIED: PLANTING LOCATED NEAR SUFFICIENT HARDSCAPE AND UTILITY TRENCHES. EXCAVATE TO DEPTH NOTED ON PLAN IN THESE AREAS.

EXISTING TREES AND SHRUBS IN CITY RIGHT OF WAY TO BE PROTECTED AND RETAINED

PROPOSED WOOD PRIVACY FENCE

7.5 m TREE PLANTING SET-BACK

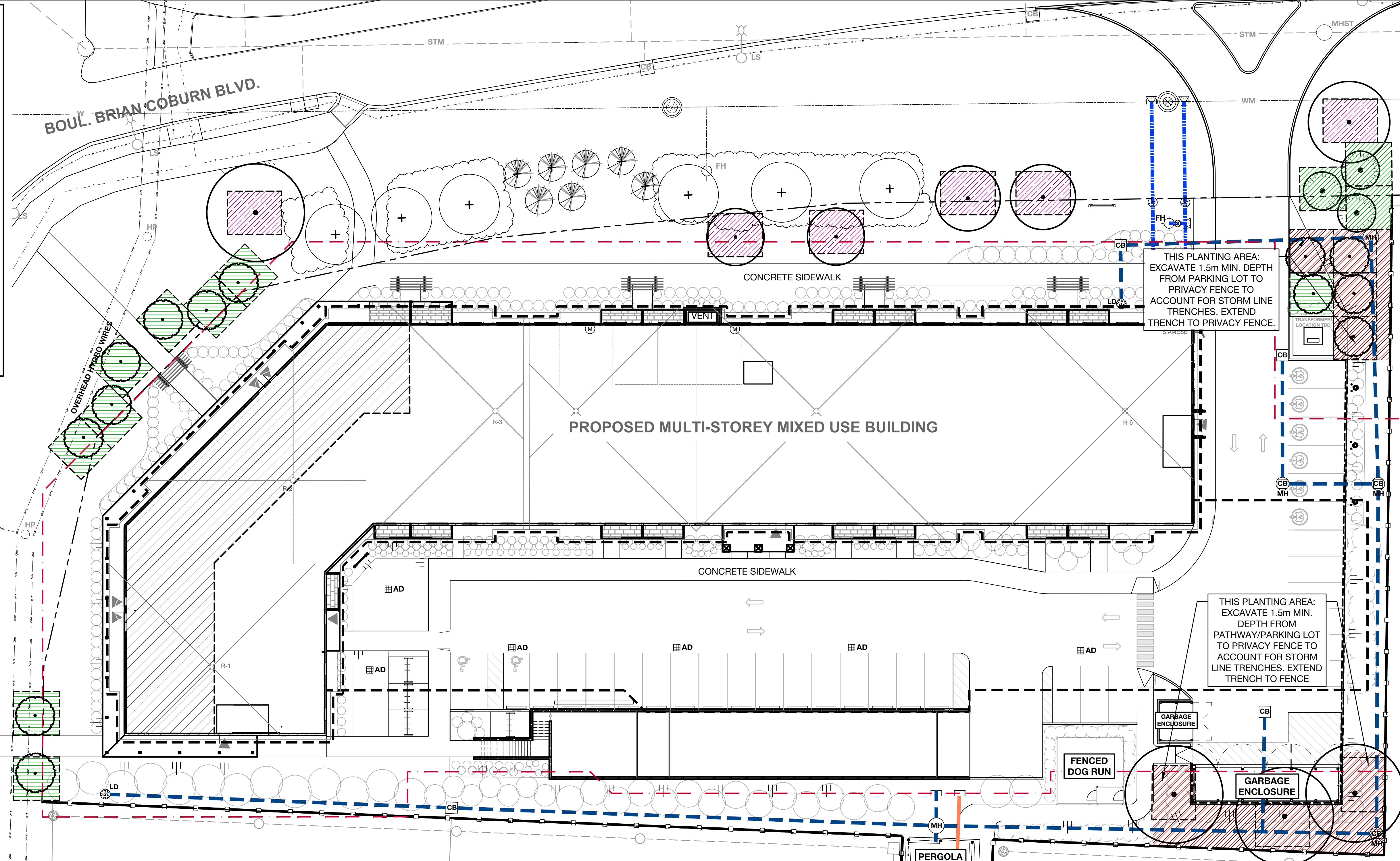
PROPOSED U/G WATERMAIN **

PROPOSED U/G STORM **

PROPERTY LINE

PROPOSED U/G SANITARY **

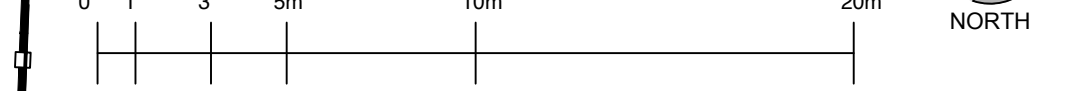
** REFER TO ENGINEERING FOR ALL EXISTING AND PROPOSED UTILITIES



PLANTING NOTES

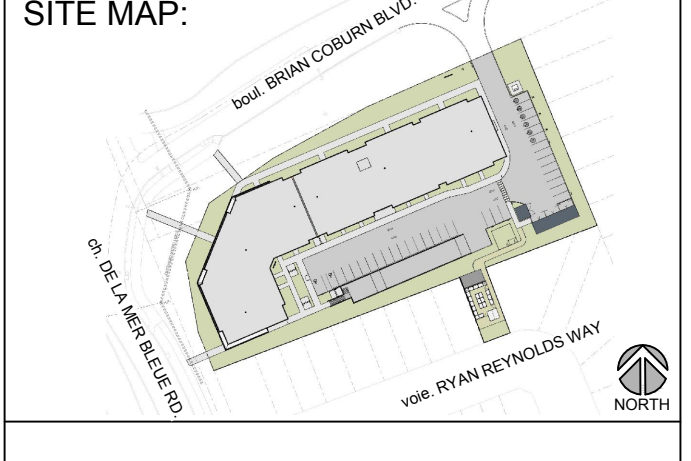
- CONTRACTOR TO VERIFY LOCATION OF ALL UTILITIES PRIOR TO EXCAVATION.
- LOCATION OF ALL TREES TO BE STAKED BY THE CONTRACTOR AND VERIFIED IN THE FIELD BY THE PROJECT MANAGER PRIOR TO THE EXCAVATION OF TREE PITS. ALL PLANT MATERIAL SHALL BE NURSERY GROWN STOCK UNLESS OTHERWISE NOTED.
- DECIDUOUS TREES TO HAVE A MINIMUM 1800mm CLEAR STEM ABOVE GRADE.
- DECIDUOUS TREES TO HAVE A MINIMUM SETBACK FROM ALL BUILDING FOUNDATIONS IN ACCORDANCE WITH THE CITY OF OTTAWA TREE PLANTING IN SENSITIVE MARINE CLAY SOILS (2017) AND GEOTECHNICAL INVESTIGATION BY PATERSON GROUP: REPORT PG6526-1 REVISION 1, DATED MARCH 22, 2023.
- ANY PROPOSED TREE SUBSTITUTIONS SHALL BE MADE WITH PLANTS OF EQUIVALENT OVERALL FORM, HEIGHT, HABIT, FLOWER, LEAF, COLOUR AND CULTURE AND ONLY AFTER WRITTEN APPROVAL FROM THE PROJECT MANAGER AND CITY OF OTTAWA FORESTER.
- THE SOIL VOLUMES PROVIDED ARE SUFFICIENT FOR A REASONABLE CHANCE OF TREE SURVIVAL. UNLESS OTHERWISE NOTED, ALL NEW TREES MEET THE MINIMUM SOIL VOLUME REQUIREMENTS BASED ON A DEPTH OF 1.5m BELOW FINISHED GRADE, AND SUBTRACTING THE VOLUME OF UTILITY TRENCHES.
- REFER TO DOCUMENT "Tree Planting in Sensitive Marine Clay Soils" - CITY OF OTTAWA, 2017 FOR MORE INFORMATION.

SCALE - 1:200



NOTE: CITY OF OTTAWA POLICY RE: PLANTING IN DEVELOPMENTS WITH CLAY SUBSOILS

- CONSIDERATION FOR TREE PLANTING IN MARINE CLAY SOILS HAVE BEEN MADE ACCORDING TO RECOMMENDATIONS PROVIDED BY PATERSON GROUP IN THEIR GEOTECHNICAL INVESTIGATION: PROPOSED MIXED-USE DEVELOPMENT, 2275 MER BLEUE ROAD, OTTAWA, ONTARIO: PREPARED FOR SEYMOUR PACIFIC DEVELOPMENTS (ONTARIO) LTD. REPORT PG6526-1 REVISION 1 DATED MARCH 22, 2023.
- BASED ON THIS REPORT (SECTION 6.8), THE PLASTICITY INDEX WAS FOUND TO BE GREATER THAN 40% IN ALL THE TESTED CLAY SAMPLES. THIS RESULT INDICATES THERE IS HIGH POTENTIAL FOR SOIL VOLUME CHANGE. ALL SMALL TREES (UNDER 7.5m AT MATURE HEIGHT) MUST BE SETBACK 7.5m MINIMUM FROM THE BUILDING FOUNDATION. MEDIUM TREES (UNDER 14m AT MATURE HEIGHT) CAN ALSO BE SET BACK 7.5m MINIMUM, GIVEN THE FOLLOWING CONDITIONS ARE MET:
 - ALL TREES ARE PROVIDED ADEQUATE SOIL VOLUME: A SMALL TREE MUST BE PROVIDED WITH A MINIMUM OF 25 m³ OF AVAILABLE SOIL VOLUME WHILE A MEDIUM TREE MUST BE PROVIDED WITH A MINIMUM OF 30 m³ OF AVAILABLE SOIL VOLUME, AS DETERMINED BY THE LANDSCAPE ARCHITECT. THE DEVELOPER IS TO ENSURE THAT THE SOIL IS GENERALLY UN-COMPACTED WHEN BACKFILLING IN TREE PLANTING LOCATIONS.
 - THE GRADING SURROUNDING THE TREE MUST PROMOTE DRAINAGE TO THE TREE ROOT ZONE: IN SUCH A MANNER AS NOT TO BE DETRIMENTAL TO THE TREE, AS NOTED ON THE GRADING PLAN (PREPARED BY NOVATECH).
 - TREES SPECIFIED ARE NOT CONSIDERED TO BE "FAST GROWING SPECIES": (ie. WILLOWS (*Salix*), POPLARS (*Populus*) AND MANITOBA MAPLE (*Acer negundo*)). THESE ARE NOT CONSIDERED ACCEPTABLE FOR THIS SITE AND ITS SUBSURFACE CONDITIONS



PROJECT STATUS:
ISSUED FOR SPC SUBMISSION

Revision Schedule

No.	Description	Revision Date
1	ISSUED FOR CLIENT REVIEW	2023-07-07
2	ISSUED FOR SITE PLAN REVIEW	2023-11-03
3	ISSUED FOR SITE PLAN REVIEW	2024-04-29
4	ISSUED FOR SITE PLAN REVIEW	2024-06-04
5	ISSUED FOR SPC SUBMISSION	2024-08-06
6	ISSUED FOR SPC SUBMISSION	2024-10-25
7	ISSUED FOR SPC SUBMISSION	2024-11-26
8	ISSUED FOR SPC SUBMISSION	2024-11-28



TRADE CONTRACTORS SHALL VERIFY ALL DIMENSIONS AND REPORT ANY DISCREPANCIES OR INCONSISTENCIES TO SEYMOUR PACIFIC DEVELOPMENTS LTD., WITHOUT DELAY, FOR CLARIFICATION AND/OR CONFIRMATION. DO NOT SCALE DRAWINGS. DESIGNS REPRESENTED AND DRAWINGS USED AS INSTRUMENTS OF SERVICE SHALL REMAIN THE COPYRIGHT AND PROPERTY OF SEYMOUR PACIFIC DEVELOPMENTS LTD. ANY REPRODUCTION OR USE FOR ANY PURPOSE OTHER THAN THAT AUTHORIZED BY SEYMOUR PACIFIC DEVELOPMENTS LTD. IS PROHIBITED.

CONTRACTORS SHALL REMAIN FAMILIAR WITH, SHALL REFER TO, AND SHALL PERFORM IN ACCORDANCE WITH LOCAL LAWS, REGULATIONS AND BUILDING CODES. CONTRACTORS SHALL MAINTAIN GOOD INDUSTRY BUILDING AND SAFETY PRACTICES CONSISTENT WITH THE CONTRACT INTENT AND THE REQUIREMENTS OF JURISDICTIONAL AUTHORITIES.

ADDITIONAL CLAIMS AND COSTS RELATED TO NON-MATERIAL CHANGES WILL NOT BE ACCEPTED BY SEYMOUR PACIFIC DEVELOPMENTS LTD. NON-MATERIAL CHANGES ARE DEEMED TO BE PLAN CHANGES OR SPECIFICATION ADJUSTMENTS THAT DO NOT SUBSTANTIALLY AFFECT THE VALUE, TIME, COST AND QUALITY OF CONSTRUCTION.

CONTRACTORS SHALL MAKE EVERY REASONABLE EFFORT TO MAINTAIN SCHEDULE TARGETS AND PROVIDE GOOD EFFICIENCY, PROGRESS, WORKMANSHIP AND QUALITY TOWARD DEFICIENCY-FREE RESULTS.

PROJECT NAME:
CASSETTE COMMONS

PROJECT NUMBER:

CITY OF OTTAWA:

ADDRESS:
2275 MER BLEUE ROAD
OTTAWA, ON

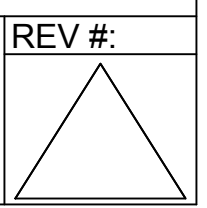
DRAWING TITLE:
SOIL VOLUMES PLAN

DRAWN BY: K. SELIN
CHECKED BY: K. CERVENÝ

DATE: 2024-11-28

SCALE: 1:200

DRAWING #: L.2

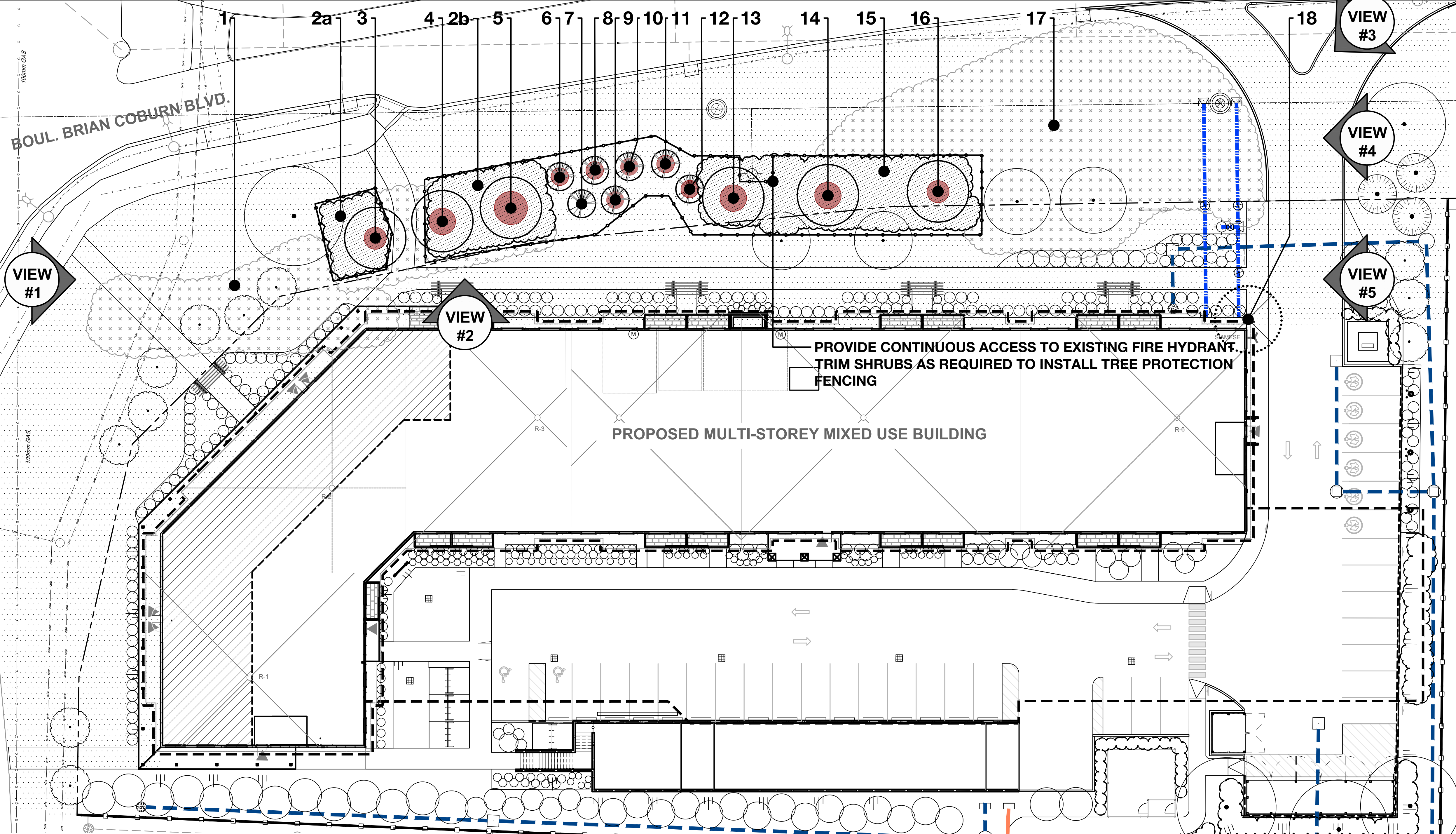


D07-12-24-0087

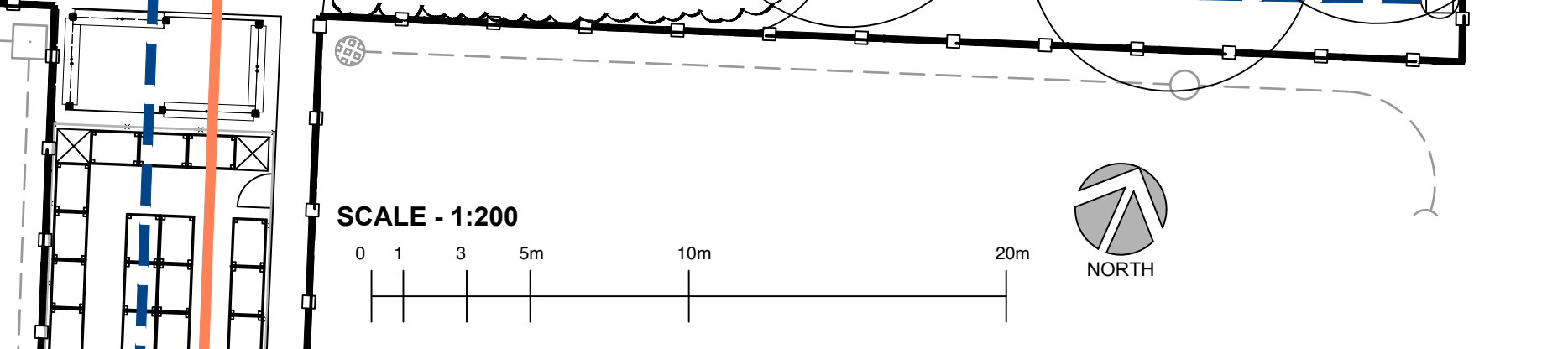
LEGEND

- KEY (DECIDUOUS)
- KEY (CONIFEROUS)
- EXISTING TREES TO REMAIN
- KEY (DECIDUOUS OR CONIFEROUS)
- EXISTING TREES TO BE REMOVED
- KEY
- EXISTING SHRUBS, THICKETS OR GROVES OF VEGETATION TO REMAIN
- KEY
- EXISTING SHRUBS, THICKETS OR GROVES OF VEGETATION TO BE REMOVED
- PROPERTY LINE
- PROPOSED TREE PROTECTION FENCE
- EXISTING TURF IN BOULEVARD
- PROPOSED U/G SANITARY **
- PROPOSED U/G WATERMAIN **
- PROPOSED U/G STORM **

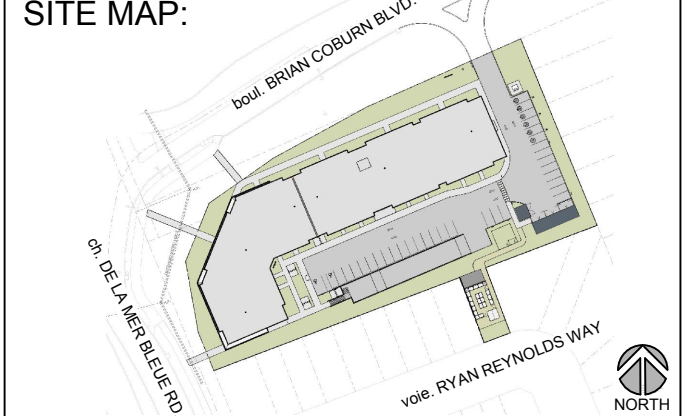
** REFER TO ENGINEERING FOR ALL EXISTING AND PROPOSED UTILITIES



KEY	BOTANICAL NAME	COMMON NAME	DBH	CRZ	CONDITION	OWNERSHIP	NATIVE	DESCRIPTION	ACTION
1	<i>Populus deltoides</i>	Eastern Cottonwood	1 - 20 cm	1 - 2 m	Good	Private & ROW	Yes	Healthy suckering poplar grove of young trees and saplings	Remove
2ab	<i>Physocarpus opulifolius</i>	Common Ninebark	1.5m ht	-	Good	ROW	Yes	Healthy shrubs in boulevard planting bed	Retain 80%
3	<i>Quercus macrocarpa</i>	Bur Oak	12 cm	1.2 m	Good	ROW	Yes	Healthy trees in boulevard shrub planting bed	Protect & Retain
4	<i>Quercus macrocarpa</i>	Bur Oak	10 cm	1 m	Good	ROW	Yes	Healthy trees in boulevard shrub planting bed	Protect & Retain
5	<i>Quercus macrocarpa</i>	Bur Oak	15 cm	1.5 m	Good	ROW	Yes	Healthy trees in boulevard shrub planting bed	Protect & Retain
6	<i>Picea glauca</i>	White Spruce	9 cm	9 m	Good	ROW	Yes	Healthy trees in boulevard planting bed	Protect & Retain
7	<i>Picea glauca</i>	White Spruce	9 cm	9 m	Dead	ROW	Yes	Dead spruce in boulevard planting bed	Retain
8	<i>Picea glauca</i>	White Spruce	8 cm	8 m	Good	ROW	Yes	Healthy trees in boulevard planting bed	Protect & Retain
9	<i>Picea glauca</i>	White Spruce	8 cm	8 m	Good	ROW	Yes	Healthy trees in boulevard planting bed	Protect & Retain
10	<i>Picea glauca</i>	White Spruce	6 cm	.6 m	Good	ROW	Yes	Healthy trees in boulevard planting bed	Protect & Retain
11	<i>Picea glauca</i>	White Spruce	8 cm	8 m	Good	ROW	Yes	Healthy trees in boulevard planting bed	Protect & Retain
12	<i>Picea glauca</i>	White Spruce	8 cm	8 m	Good	ROW	Yes	Healthy trees in boulevard planting bed	Protect & Retain
13	<i>Glymnocladus dioicis</i>	Kentucky Coffeetree	12 cm	1.2 m	Good	ROW	Yes	Healthy trees in boulevard planting bed	Protect & Retain
14	<i>Glymnocladus dioicis</i>	Kentucky Coffeetree	12 cm	1.2 m	Good	ROW	Yes	Healthy trees in boulevard planting bed	Protect & Retain
15	<i>Rhus typhina</i>	Staghorn Sumac	1.8 - 3 m ht	-	Good	ROW	Yes	Boulevard planting bed	Protect & Retain
16	<i>Glymnocladus dioicis</i>	Kentucky Coffeetree	10 cm	1 m	Good	ROW	Yes	Healthy trees in boulevard planting bed	Protect & Retain
17	<i>Phragmites australis</i>	European Common Reed	1 - 1.8 m ht	-	Good	ROW	No	Highly Invasive	Remove
18	<i>Populus species</i>	Poplar species	15 cm	1.5 m	Good	Private	Yes	Healthy tree	Remove



SEYMOUR PACIFIC DEVELOPMENTS LTD.
100 St Anns Street, Campbell River, B.C.
(T)250.286.8045 (F)250.286.8046
www.seymourpacific.ca



PROJECT STATUS:
ISSUED FOR SPC SUBMISSION

Revision Schedule		
No.	Description	Revision Date
1	ISSUED FOR CLIENT REVIEW	2023-07-07
2	ISSUED FOR SITE PLAN REVIEW	2023-11-03
3	ISSUED FOR SITE PLAN REVIEW	2024-04-29
4	ISSUED FOR SITE PLAN REVIEW	2024-06-04
5	ISSUED FOR SPC SUBMISSION	2024-08-06
6	ISSUED FOR SPC SUBMISSION	2024-10-25
7	ISSUED FOR SPC SUBMISSION	2024-11-26
8	ISSUED FOR SPC SUBMISSION	2024-11-28

SEAL:

TRADE CONTRACTORS SHALL VERIFY ALL DIMENSIONS AND REPORT ANY DISCREPANCIES OR INCONSISTENCIES TO SEYMOUR PACIFIC DEVELOPMENTS LTD., WITHOUT DELAY, FOR CLARIFICATION AND/OR CONFIRMATION. DO NOT SCALE DRAWINGS. DESIGNS REPRESENTED AND DRAWINGS USED AS INSTRUMENTS OF SERVICE SHALL REMAIN THE COPYRIGHT AND PROPERTY OF SEYMOUR PACIFIC DEVELOPMENTS LTD. ANY REPRODUCTION OR USE FOR ANY PURPOSE OTHER THAN THAT AUTHORIZED BY SEYMOUR PACIFIC DEVELOPMENTS LTD. IS PROHIBITED.

CONTRACTORS SHALL REMAIN FAMILIAR WITH, SHALL REFER TO, AND SHALL PERFORM IN ACCORDANCE WITH LOCAL LAWS, REGULATIONS AND BUILDING CODES. CONTRACTORS SHALL MAINTAIN GOOD INDUSTRY BUILDING AND SAFETY PRACTICES CONSISTENT WITH THE CONTRACT INTENT AND THE REQUIREMENTS OF JURISDICTIONAL AUTHORITIES.

ADDITIONAL CLAIMS AND COSTS RELATED TO NON-MATERIAL CHANGES WILL NOT BE ACCEPTED BY SEYMOUR PACIFIC DEVELOPMENTS LTD. NON-MATERIAL CHANGES ARE DEEMED TO BE PLAN CHANGES OR SPECIFICATION ADJUSTMENTS THAT DO NOT SUBSTANTIALLY AFFECT THE VALUE, TIME, COST AND QUALITY OF CONSTRUCTION.

CONTRACTORS SHALL MAKE EVERY REASONABLE EFFORT TO MAINTAIN SCHEDULE TARGETS AND PROVIDE GOOD EFFICIENCY, PROGRESS, WORKMANSHIP AND QUALITY TOWARD DEFICIENCY-FREE RESULTS.

PROJECT NAME:
CASSETTE COMMONS

PROJECT NUMBER:

CITY OF OTTAWA:

ADDRESS:
2275 MER BLEUE ROAD
OTTAWA, ON

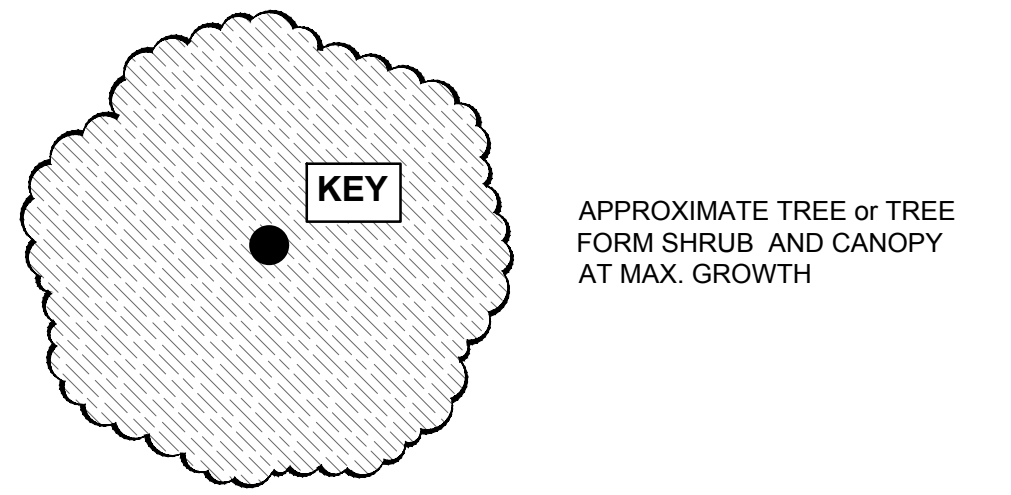
DRAWING TITLE:
TREE CONSERVATION REPORT + PLAN

DRAWN BY: K. SELIN
CHECKED BY: K. CERVENY
DATE: 2024-11-28
SCALE: 1:200
DRAWING #: **L.3**

REV #:

D07-12-24-0087

LEGEND

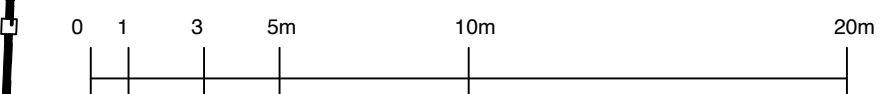


BOUL. BRIAN COBURN BLVD.

CH. DE LA MER BLEUE RD.

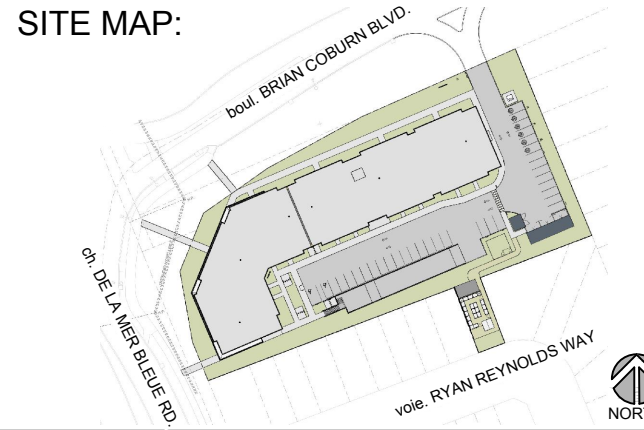
PROPOSED MULTI-STOREY MIXED USE BUILDING

SCALE - 1:200



KEY	QTY	BOTANICAL NAME	COMMON NAME	NATIVE	PROJECTED CANOPY DIAMETER	OWNERSHIP	EXISTING OR PROPOSED	TOTAL COVERAGE (based on % of canopy unobstructed)
DECIDUOUS TREES								
Ag	4	<i>Aesculus glabra</i>	Ohio Buckeye	Y	10 m	3P, 1 ROW	P	(78.5 m ²) x 3.25 = 255 m ²
Ah	2	<i>Carpinus caroliniana</i>	American Hornbeam	Y	10 m	City ROW	P	(78.5 m ²) x 1.25 = 98 m ²
Ca	5	<i>Cornus alternifolia</i>	Pagoda Dogwood	Y	8 m	Private	P	(50.3 m ²) x 2 = 101 m ²
CxP	4	<i>Cercis canadensis</i> 'Pink Heartbreaker'	Pink Heartbreaker Redbud	C	5 m	City ROW	P	(19.6 m ²) x 3.5 = 69 m ²
Gd	3	<i>Gymnocladus dioica</i>	Kentucky Cofeetree	Y	15 m	City ROW	E	(177 m ²) x 2.5 = 443 m ²
Mx	4	<i>Malus sargentii</i> 'Rosea'	Pink Sargent Crabapple	C	4 m	City ROW	P	(12.6 m ²) x 4 = 50 m ²
Ov	2	<i>Ostrya virginiana</i>	Ironwood	Y	8 m	Private	P	(50.3 m ²) x 1 = 50 m ²
Qa	1	<i>Quercus alba</i>	White Oak	Y	22 m	City ROW	P	(380 m ²) x 1 = 380 m ²
Qm	3	<i>Quercus macrocarpa</i>	Burr Oak	Y	16 m	City ROW	E	(201 m ²) x 2 = 402 m ²
TREE - FORM DECIDUOUS SHRUBS								
Nb	7	<i>Viburnum lentago</i>	Nannyberry	Y	2 m	Private	P	(3.1 m ²) x 7 = 22 m ²
PoD	8	<i>Physocarpus opulifolius</i> 'Monlo' - Diablo	Diablo Ninebark	N	1.5 m	Private	P	(1.8 m ²) x 6.25 = 11 m ²
CONIFEROUS TREES								
Pg	5	<i>Picea glauca</i>	White Spruce	Y	8 m	City ROW	E	(50 m ²) x 3.25 = 163 m ²
Pp	3	<i>Picea pungens</i> 'Fat Albert'	Fat Albert Spruce	N	5 m	2P, 1 ROW	P	(19.6 m ²) x 0 = 0m ²
TOTAL CANOPY COVERAGE:								2044 m ²
% OF SITE CANOPY COVERAGE:								2044 m ² /6800 m ² = 30%

SEYMOUR PACIFIC DEVELOPMENTS LTD.
100 St Anns Street, Campbell River, B.C.
(T)250.286.8045 (F)250.286.8046
www.seymourpacific.ca



PROJECT STATUS:
ISSUED FOR SPC SUBMISSION

Revision Schedule		
No.	Description	Revision Date
1	ISSUED FOR CLIENT REVIEW	2023-07-07
2	ISSUED FOR SITE PLAN REVIEW	2023-11-03
3	ISSUED FOR SITE PLAN REVIEW	2024-04-29
4	ISSUED FOR SITE PLAN REVIEW	2024-06-04
5	ISSUED FOR SPC SUBMISSION	2024-08-06
6	ISSUED FOR SPC SUBMISSION	2024-10-25
7	ISSUED FOR SPC SUBMISSION	2024-11-26
8	ISSUED FOR SPC SUBMISSION	2024-11-28



TRADE CONTRACTORS SHALL VERIFY ALL DIMENSIONS AND REPORT ANY DISCREPANCIES OR INCONSISTENCIES TO SEYMOUR PACIFIC DEVELOPMENTS LTD., WITHOUT DELAY, FOR CLARIFICATION AND/OR CONFIRMATION. DO NOT SCALE DRAWINGS. DESIGNS REPRESENTED AND DRAWINGS USED AS INSTRUMENTS OF SERVICE SHALL REMAIN THE COPYRIGHT AND PROPERTY OF SEYMOUR PACIFIC DEVELOPMENTS LTD. ANY REPRODUCTION OR USE FOR ANY PURPOSE OTHER THAN THAT AUTHORIZED BY SEYMOUR PACIFIC DEVELOPMENTS LTD. IS PROHIBITED.

CONTRACTORS SHALL REMAIN FAMILIAR WITH, SHALL REFER TO, AND SHALL PERFORM IN ACCORDANCE WITH LOCAL LAWS, REGULATIONS AND BUILDING CODES. CONTRACTORS SHALL MAINTAIN GOOD INDUSTRY BUILDING AND SAFETY PRACTICES CONSISTENT WITH THE CONTRACT INTENT AND THE REQUIREMENTS OF JURISDICTIONAL AUTHORITIES.

ADDITIONAL CLAIMS AND COSTS RELATED TO NON-MATERIAL CHANGES WILL NOT BE ACCEPTED BY SEYMOUR PACIFIC DEVELOPMENTS LTD. NON-MATERIAL CHANGES ARE DEEMED TO BE PLAN CHANGES OR SPECIFICATION ADJUSTMENTS THAT DO NOT SUBSTANTIALLY AFFECT THE VALUE, TIME, COST AND QUALITY OF CONSTRUCTION.

CONTRACTORS SHALL MAKE EVERY REASONABLE EFFORT TO MAINTAIN SCHEDULE TARGETS AND PROVIDE GOOD EFFICIENCY, PROGRESS, WORKMANSHIP AND QUALITY TOWARD DEFICIENCY-FREE RESULTS.

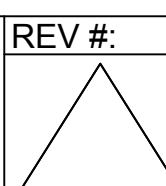
PROJECT NAME:
CASSETTE COMMONS

PROJECT NUMBER:
CITY OF OTTAWA:

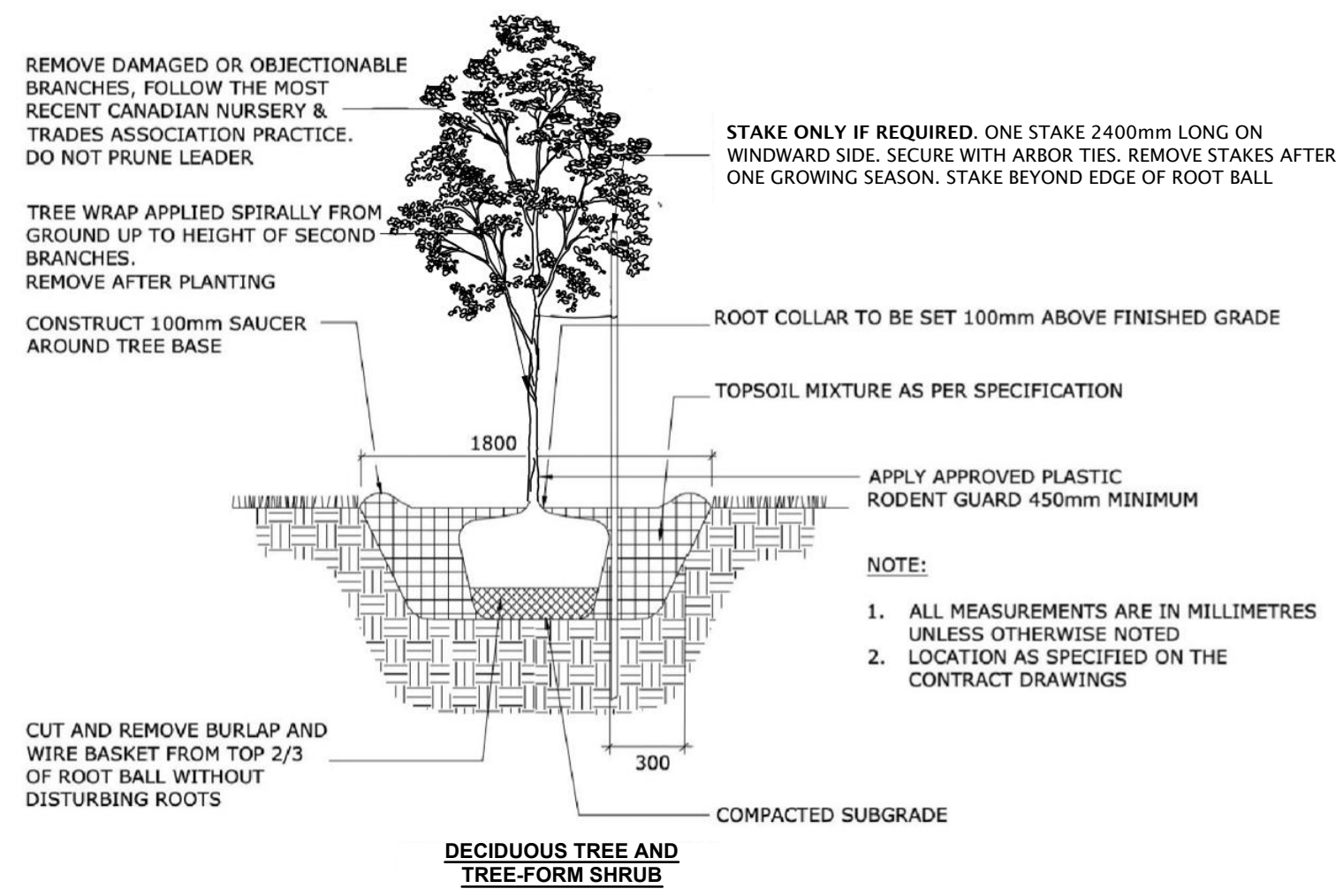
ADDRESS:
2275 MER BLEUE ROAD
OTTAWA, ON

DRAWING TITLE:
40 YEAR CANOPY PROJECTION

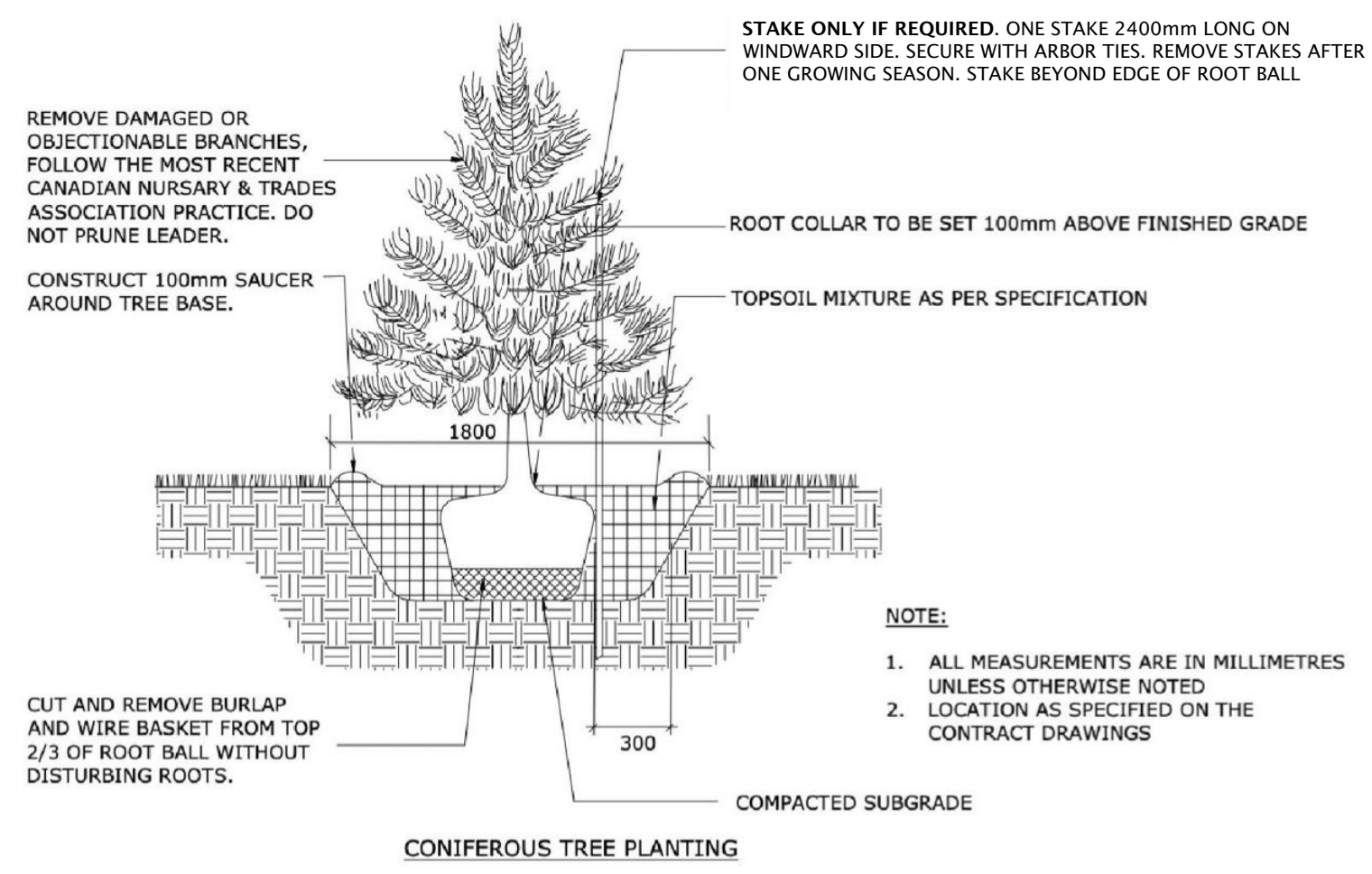
DRAWN BY: K. SELIN
CHECKED BY: K. CERVENY
DATE: 2024-11-28
SCALE: 1:200
DRAWING #: **L.4**



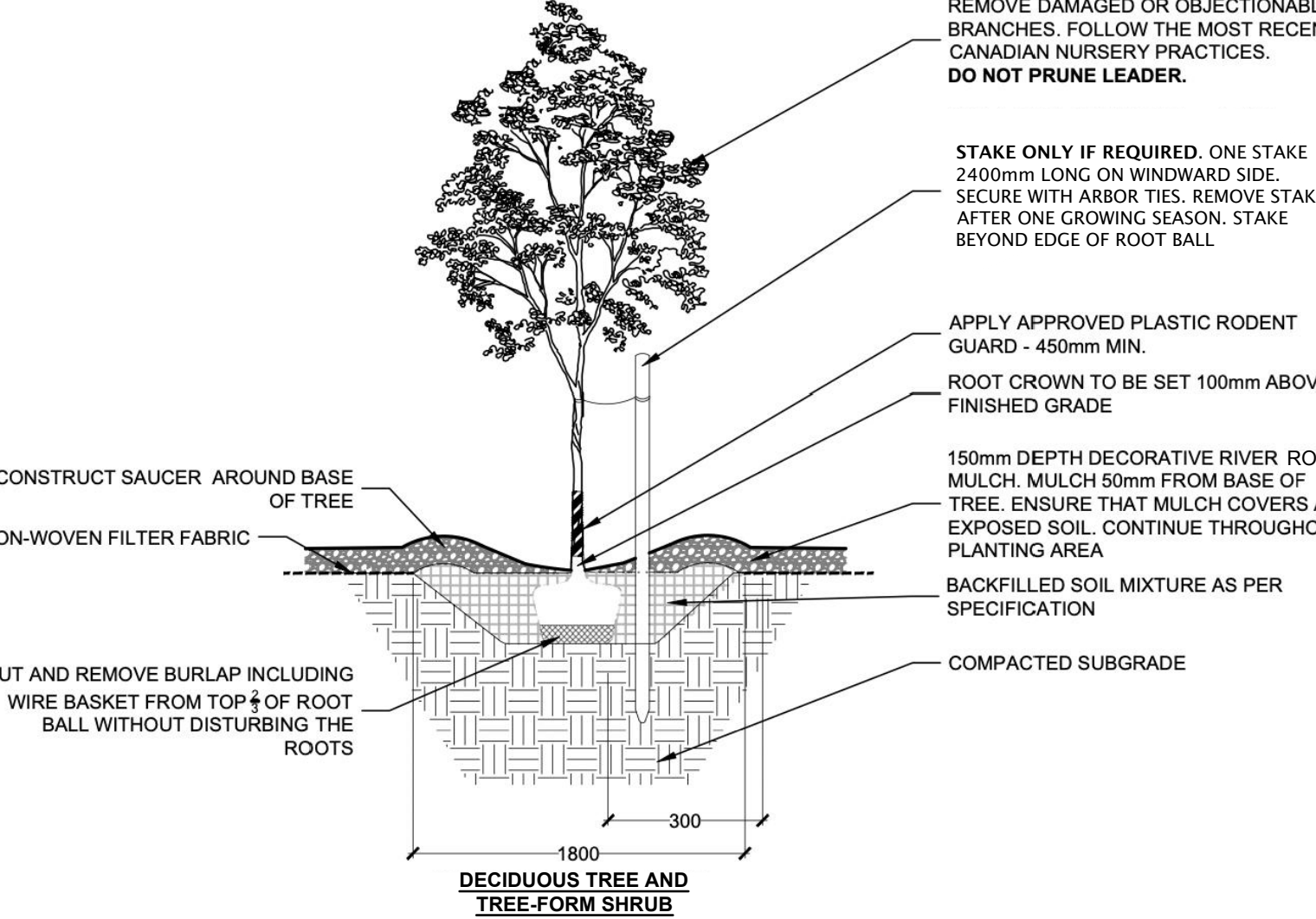
D07-12-24-0087



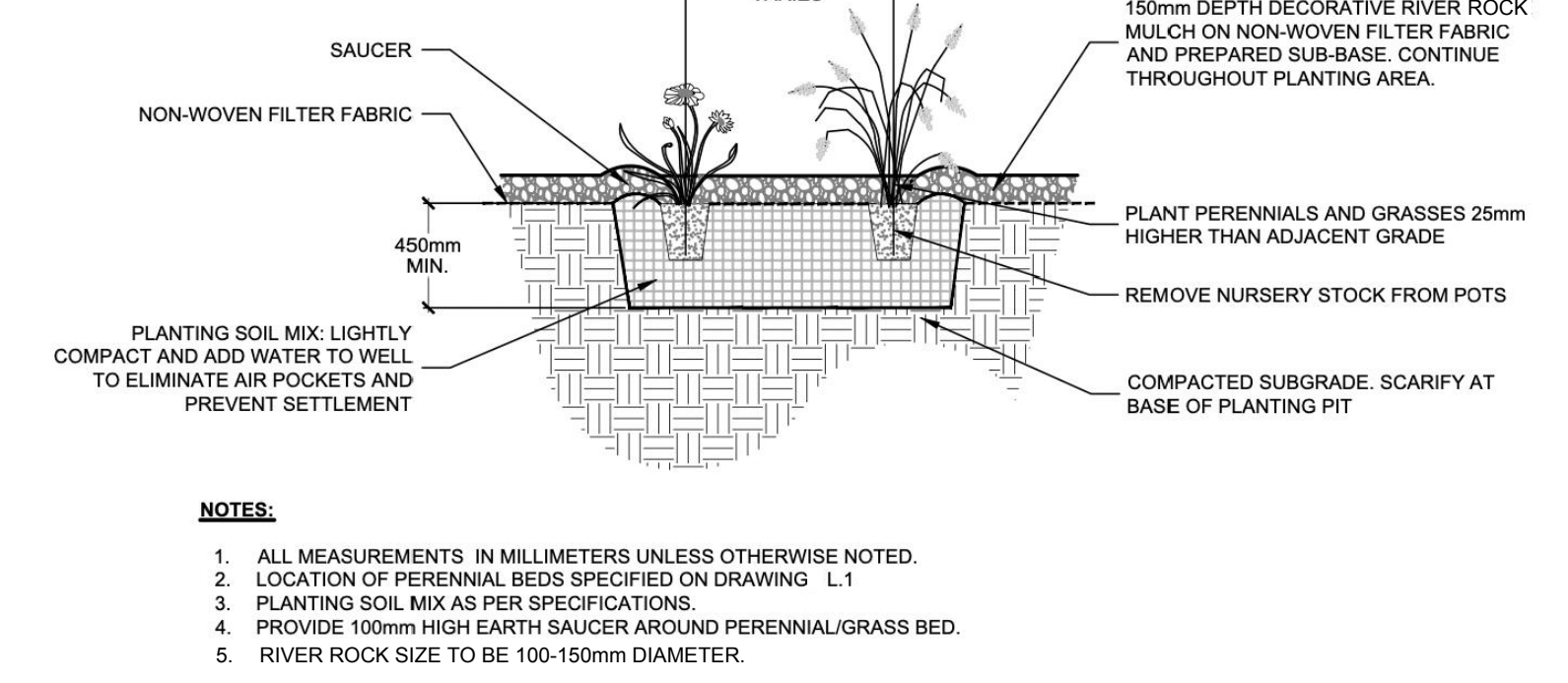
1 TREE AND TREE FORM SHRUB PLANTING IN GRASSED AREAS
NOT TO SCALE



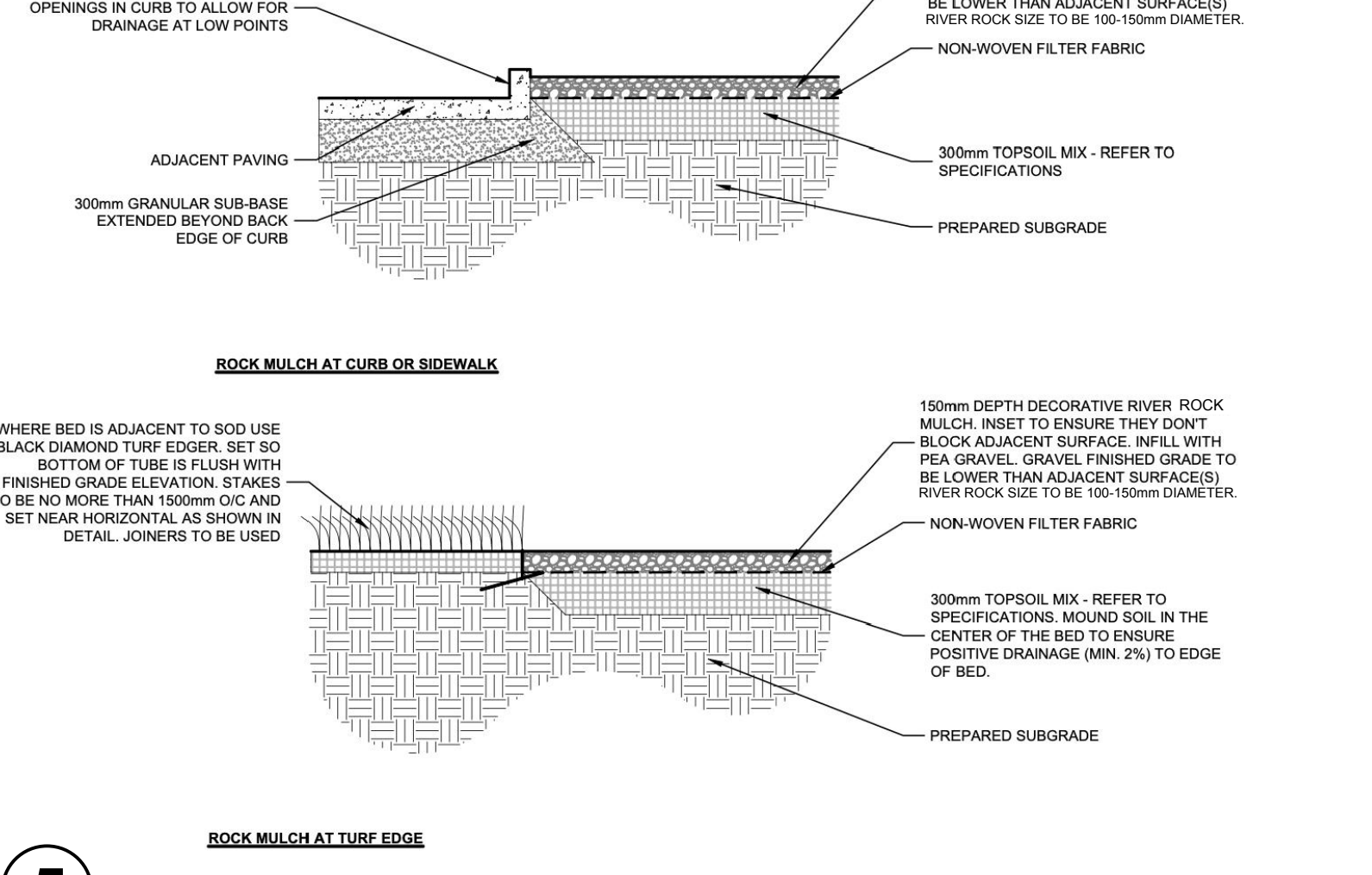
2 TREE AND TREE - FORM SHRUB PLANTING IN RIVER ROCK MULCH
NOT TO SCALE



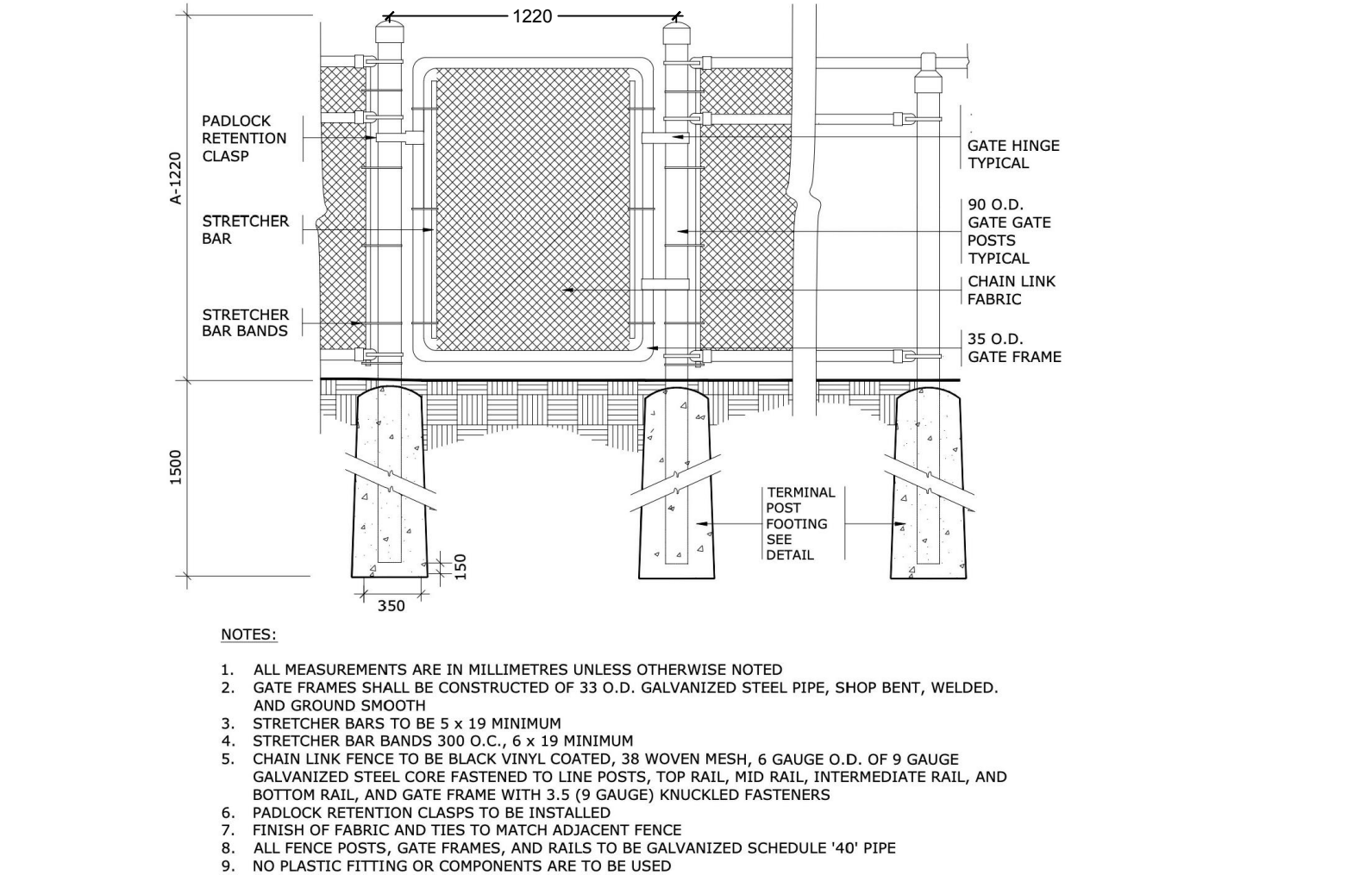
3 CONTINUOUS SHRUB PLANTING IN RIVER ROCK MULCH
NOT TO SCALE



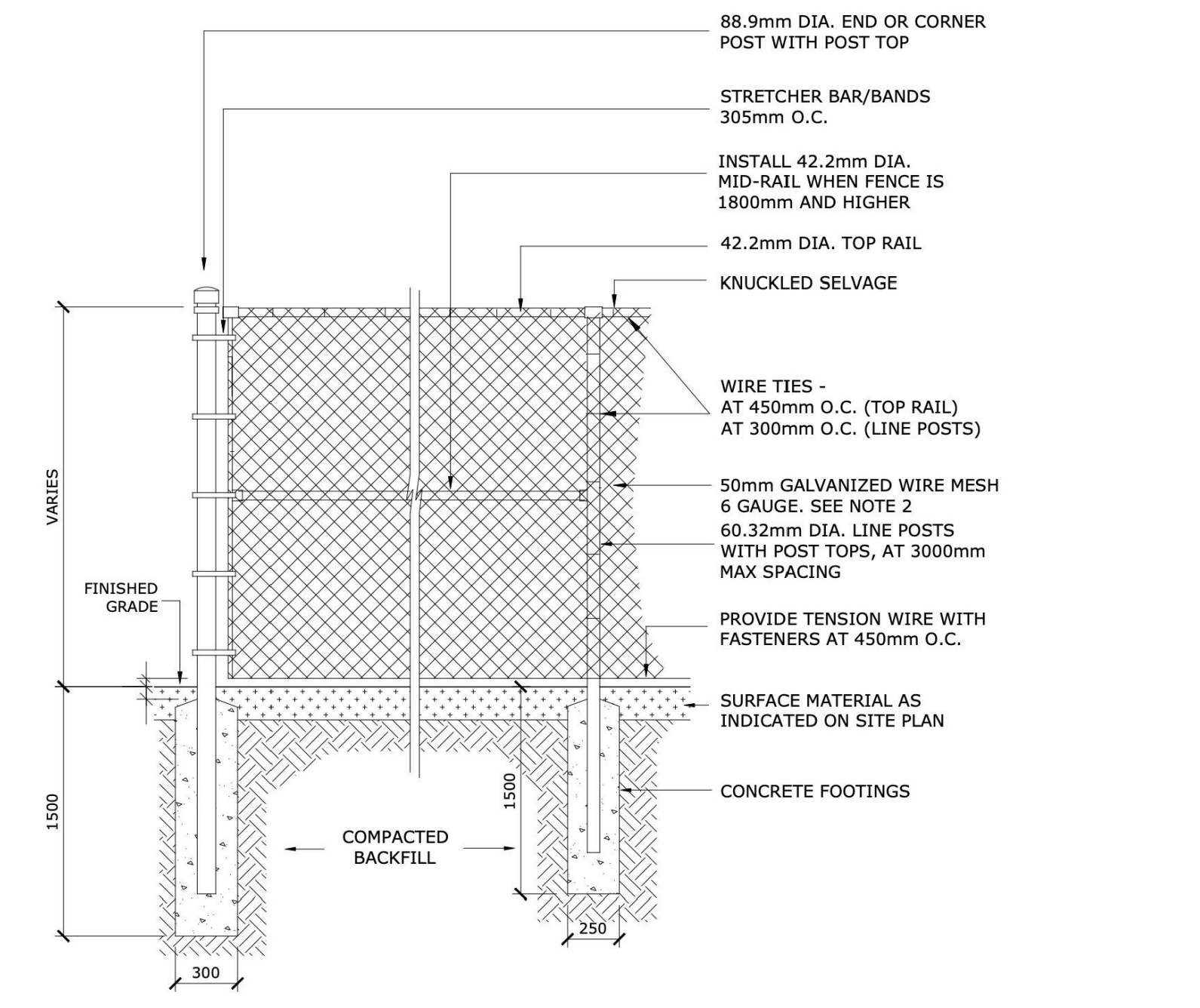
4 PERENNIAL AND ORNAMENTAL GRASS PLANTING IN MULCH
NOT TO SCALE



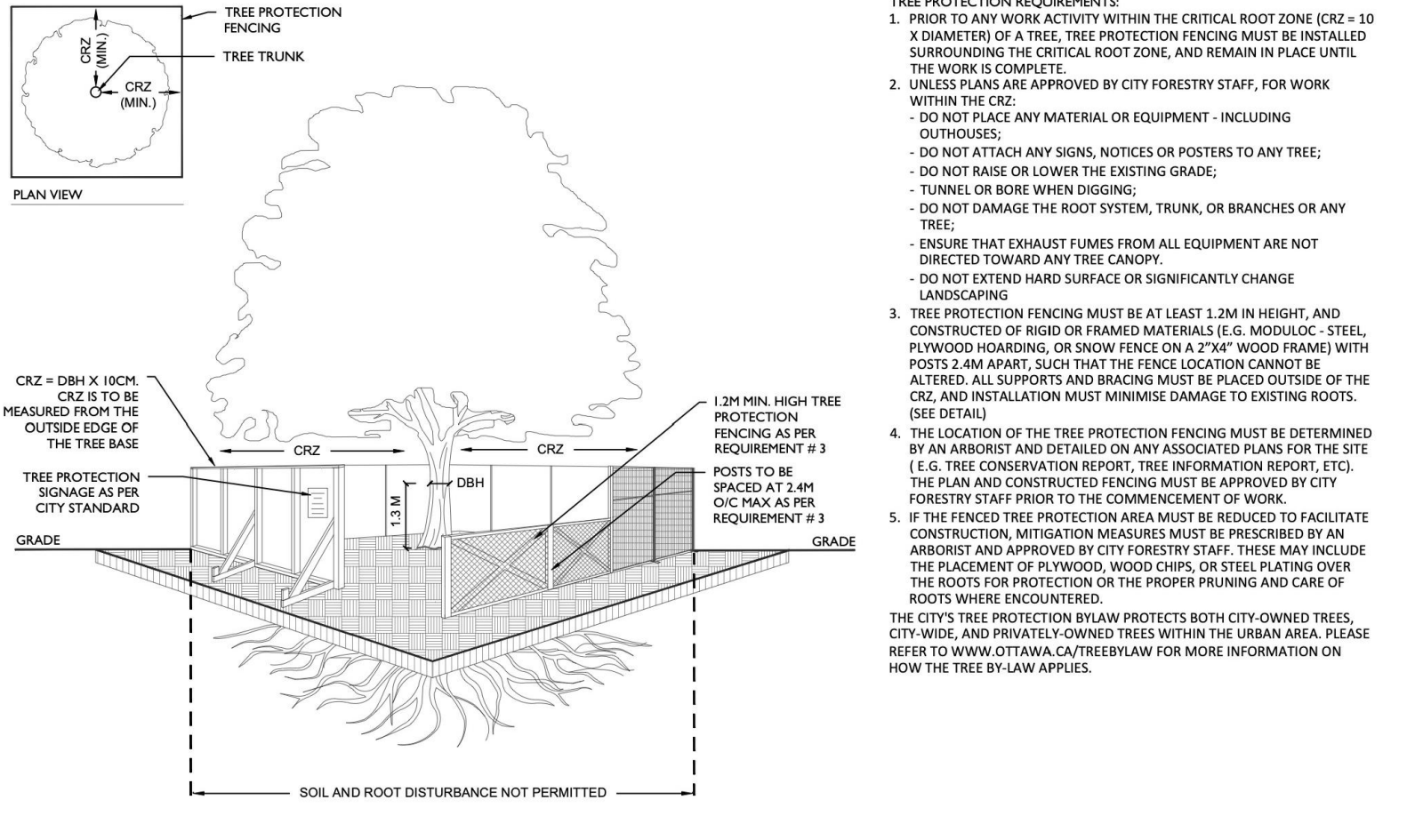
5 RIVER ROCK MULCH EDGE CONDITION
NOT TO SCALE



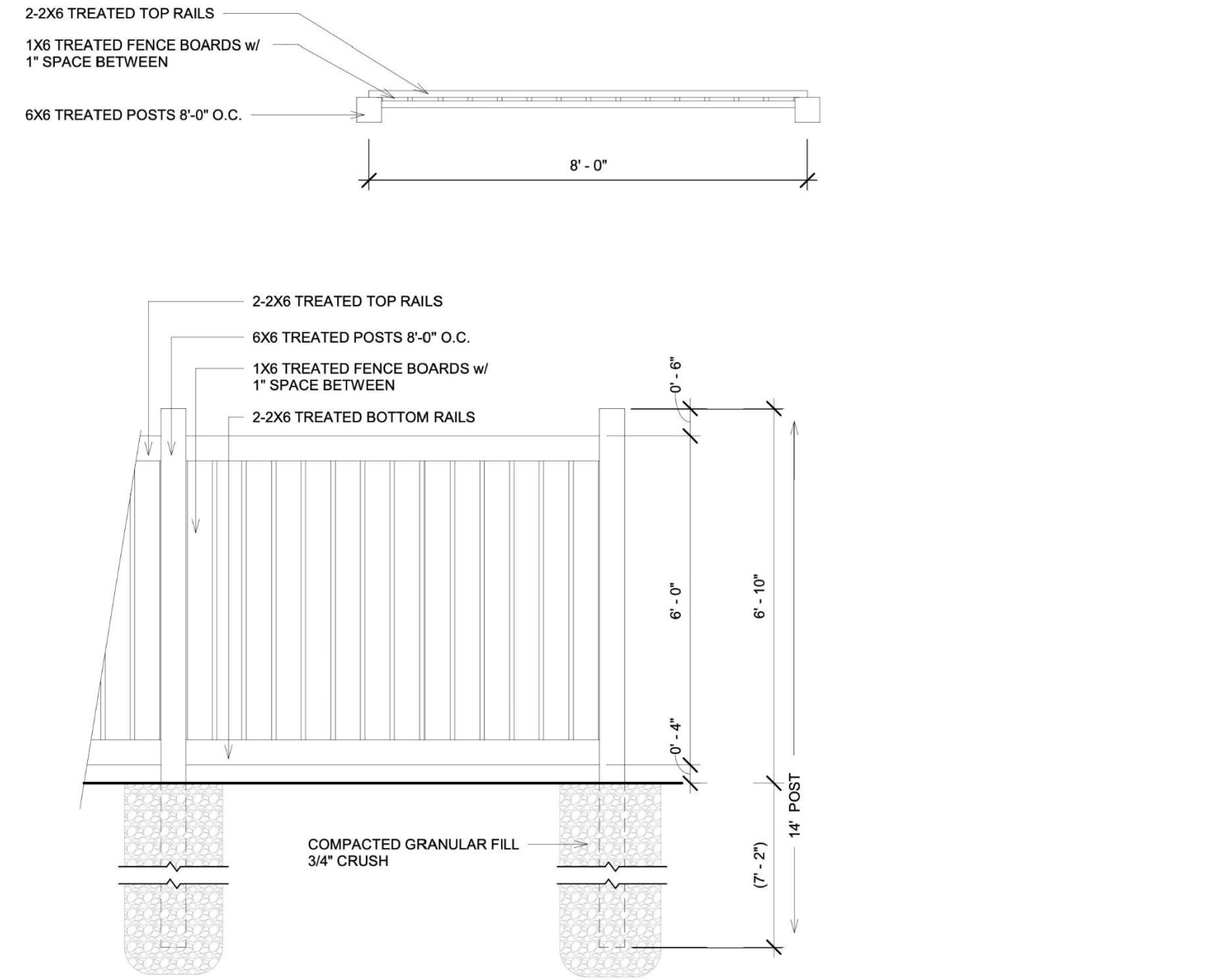
6 CHAIN LINK FENCE GATE
NOT TO SCALE



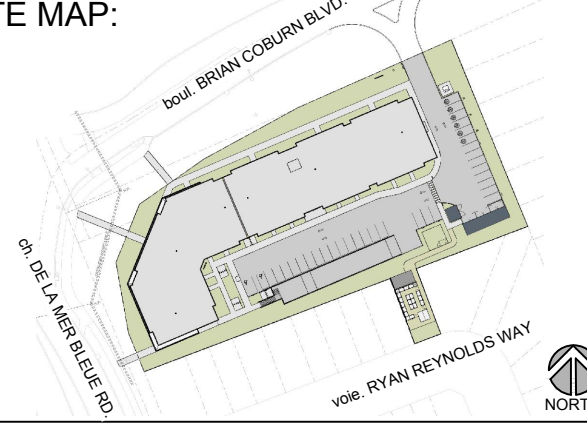
7 CHAIN LINK FENCE
NOT TO SCALE



8 TREE PROTECTION FENCING
NOT TO SCALE



9 WOOD SCREEN FENCE
NOT TO SCALE



PROJECT STATUS:
ISSUED FOR SPC SUBMISSION

Revision Schedule

No.	Description	Revision Date
1	ISSUED FOR CLIENT REVIEW	2023-07-07
2	ISSUED FOR SITE PLAN REVIEW	2023-11-03
3	ISSUED FOR SITE PLAN REVIEW	2024-04-29
4	ISSUED FOR SITE PLAN REVIEW	2024-06-04
5	ISSUED FOR SPC SUBMISSION	2024-08-06
6	ISSUED FOR SPC SUBMISSION	2024-10-25
7	ISSUED FOR SPC SUBMISSION	2024-11-26
8	ISSUED FOR SPC SUBMISSION	2024-11-28

SEAL:  **studioRed** landscape architecture


TRADE CONTRACTORS SHALL VERIFY ALL DIMENSIONS AND REPORT ANY INCONSISTENCIES TO SEYMOUR PACIFIC DEVELOPMENTS LTD., WITHOUT DELAY, FOR CLARIFICATION AND/OR CONFIRMATION. DO NOT SCALE DRAWINGS. DESIGNS REPRESENTED AND DRAWINGS USED AS INSTRUMENTS OF SERVICE SHALL REMAIN THE COPYRIGHT AND PROPERTY OF SEYMOUR PACIFIC DEVELOPMENTS LTD. ANY REPRODUCTION OR USE FOR ANY PURPOSE OTHER THAN THAT AUTHORIZED BY SEYMOUR PACIFIC DEVELOPMENTS LTD. IS PROHIBITED.

CONTRACTORS SHALL REMAIN FAMILIAR WITH, SHALL REFER TO, AND SHALL PERFORM IN ACCORDANCE WITH LOCAL LAWS, REGULATIONS AND BUILDING CODES. CONTRACTORS SHALL MAINTAIN GOOD INDUSTRY BUILDING AND SAFETY PRACTICES CONSISTENT WITH THE CONTRACT INTENT AND THE REQUIREMENTS OF JURISDICTIONAL AUTHORITIES.

ADDITIONAL CLAIMS AND COSTS RELATED TO NON-MATERIAL CHANGES WILL NOT BE ACCEPTED BY SEYMOUR PACIFIC DEVELOPMENTS LTD. NON-MATERIAL CHANGES ARE DEEMED TO BE PLAN CHANGES OR SPECIFICATION ADJUSTMENTS THAT DO NOT SUBSTANTIALLY AFFECT THE VALUE, TIME, COST AND QUALITY OF CONSTRUCTION.

CONTRACTORS SHALL MAKE EVERY REASONABLE EFFORT TO MAINTAIN SCHEDULE TARGETS AND PROVIDE GOOD EFFICIENCY, PROGRESS, WORKMANSHIP AND QUALITY TOWARD DEFICIENCY-FREE RESULTS.

PROJECT NAME:
CASSETTE COMMONS
PROJECT NUMBER:
CITY OF OTTAWA:
ADDRESS:
2275 MER BLEUE ROAD
OTTAWA, ON

DRAWING TITLE:
DETAILS
DRAWN BY: K. SELIN
CHECKED BY: K. CERVENY
DATE: 2024-11-28
SCALE: AS NOTED
DRAWING #: **L.5** REV #:

D07-12-24-0087