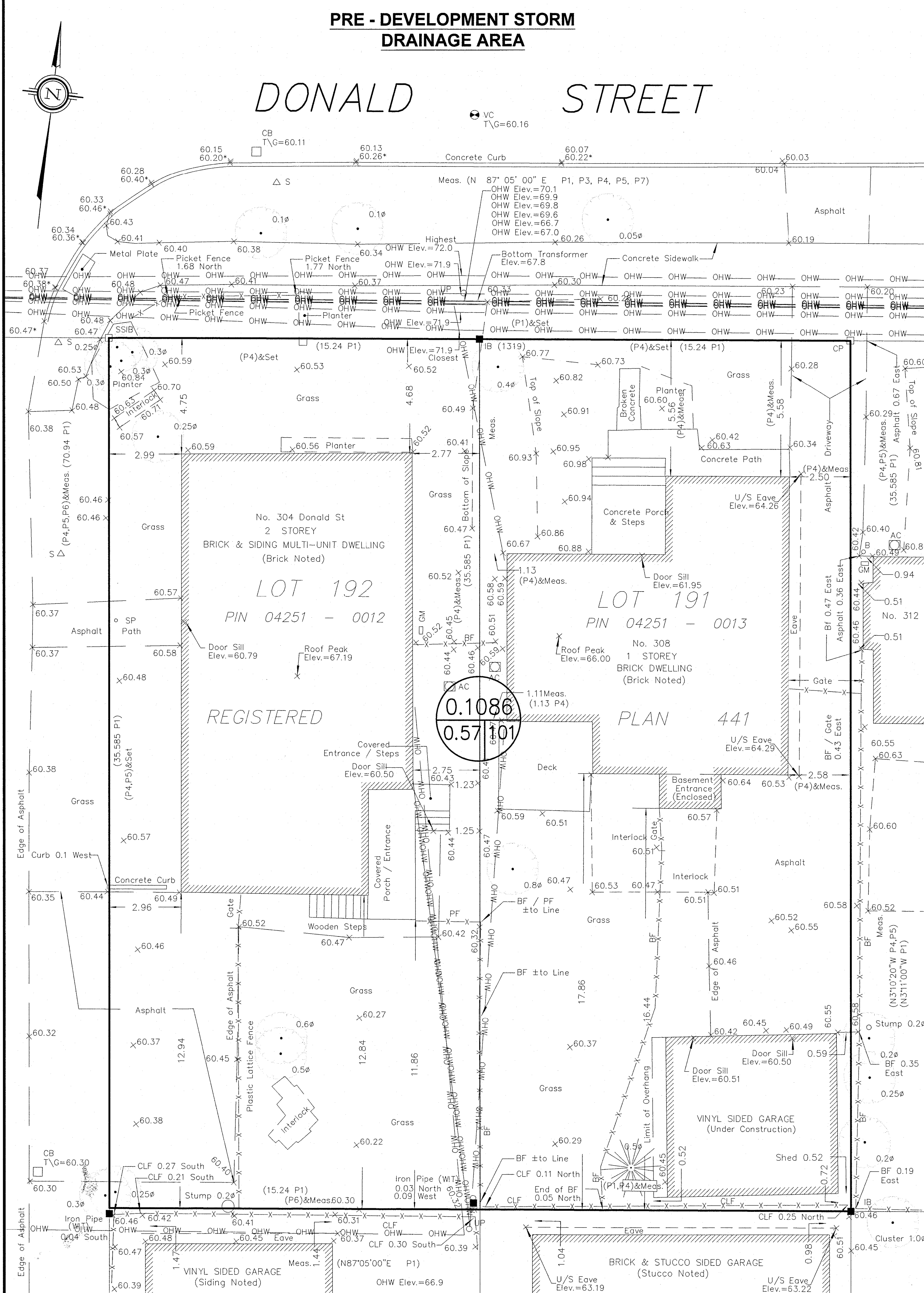
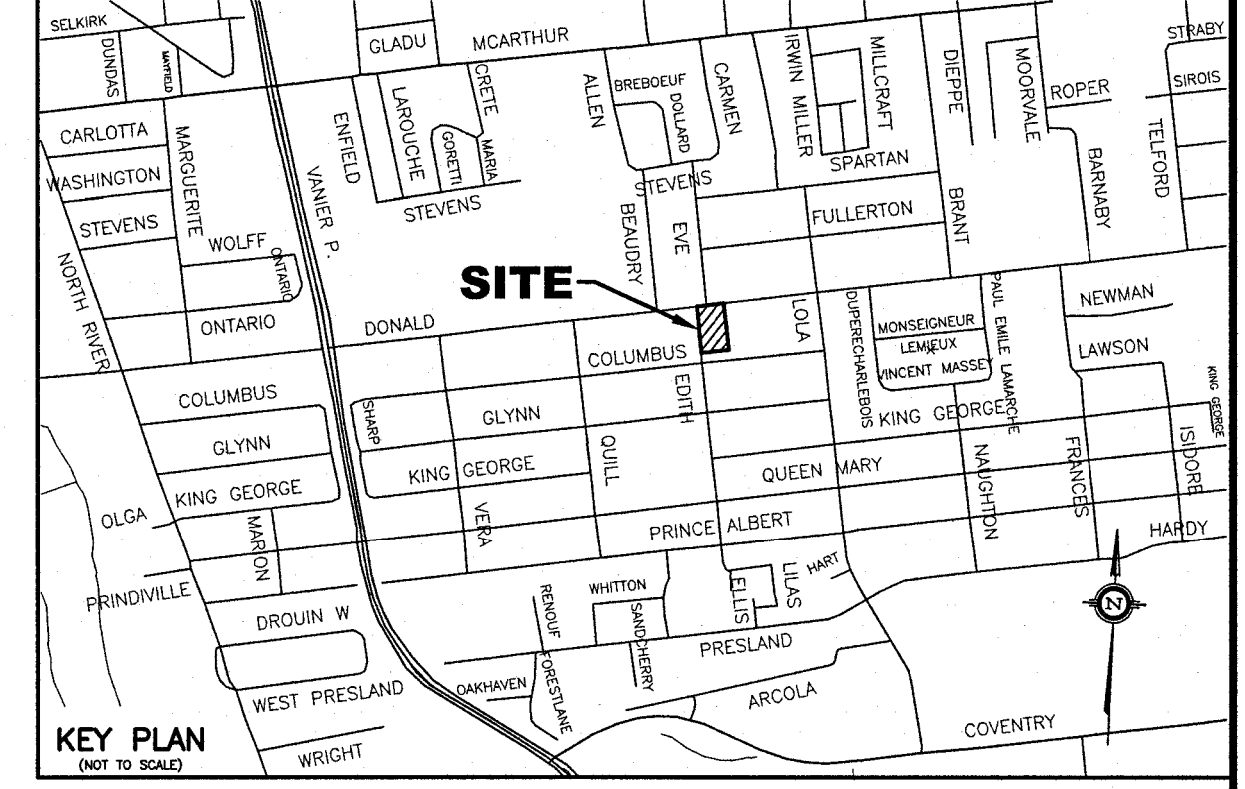
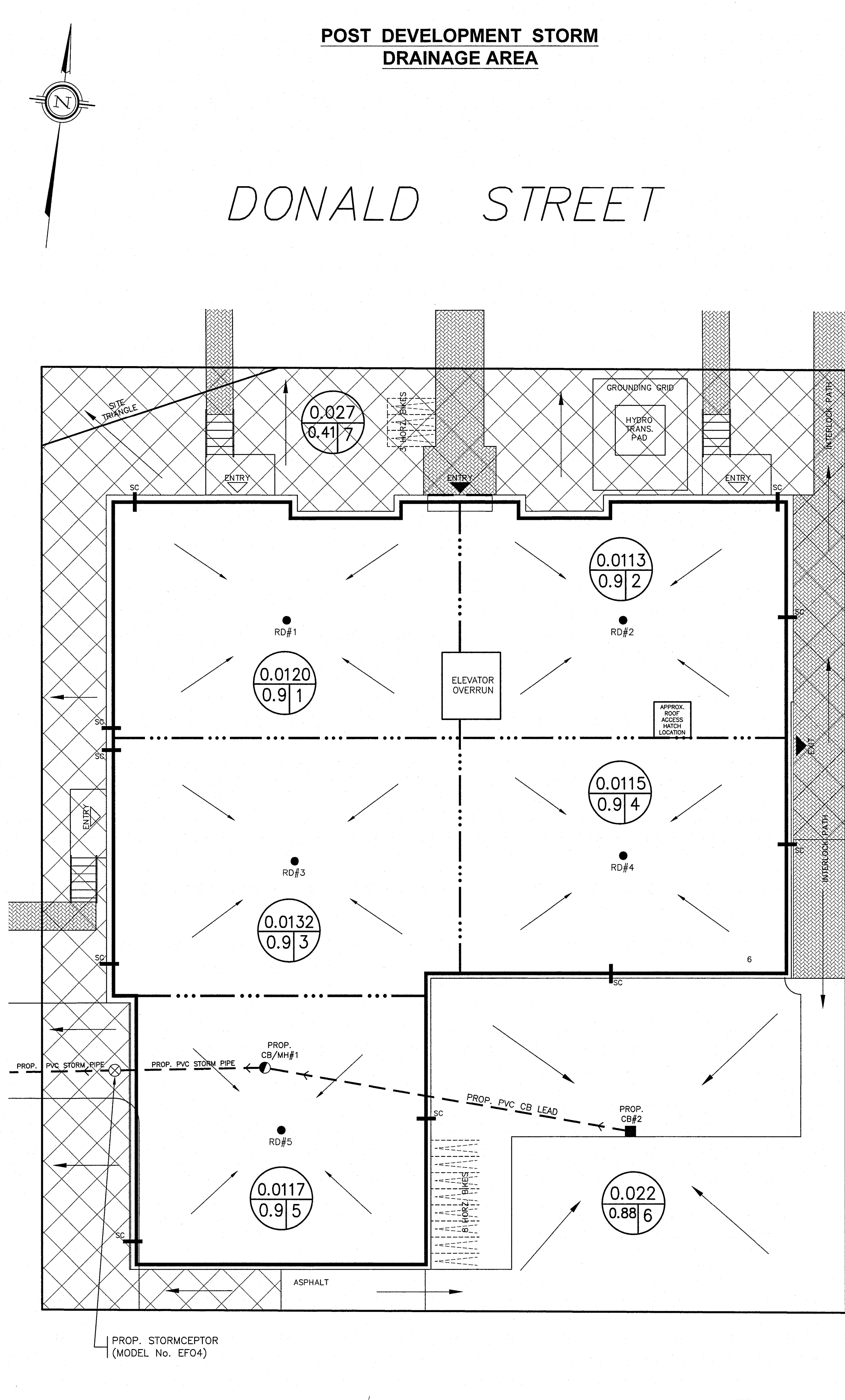


PRE - DEVELOPMENT STORM DRAINAGE AREA



POST DEVELOPMENT STORM DRAINAGE AREA



- LEGEND**
- RD#1 PROPOSED ROOF DRAIN NUMBER AND LOCATION
 - SC PROPOSED ROOF SCUPPER LOCATION
 - PROPOSED HIGH RIDGE LINE
 - 0.03 / 0.91 DRAINAGE AREA IN HECTARES / DRAINAGE NODE NUMBER
 - COEFFICIENT OF RUNOFF
 - ▨ UN-CONTROLLED DRAINAGE AREA
 - ▩ CONTROLLED DRAINAGE AREA
- NOTES**
- NODE #1, NODE #2, NODE #3, NODE #4 AND NODE #5 REPRESENTS BUILDING ROOF AREA (SWM CONTROLLED AREA) AND NODE #6 REPRESENTS REAR YARD CONTROLLED DRAINAGE AREA
 - NODE #7 REPRESENTS UNCONTROLLED DRAINAGE AREA
 - NODE #101 REPRESENTS PRE-DEVELOPMENT DATA.

NO.	REVISION	DATE	BY

SCALE

1:100 HORIZONTAL

VERTICAL

DESIGN T.L.M.
CHECKED T.L.M.
DRAWN BY P.M.
CHECKED T.L.M.
APPROVED T.L.M.

PROJECT

304-308 DONALD STREET
LOTS 191 AND 192
REGISTERED PLAN 441
CITY OF OTTAWA

DRAWING TITLE

STORM DRAINAGE AREA PLAN

T.L. MAK ENGINEERING CONSULTANTS LTD.
CONSULTING ENGINEERS

PROJECT No. 824-63 DATE APRIL 2024 DRAWING No. D-1