

METRIC
DISTANCES AND COORDINATES SHOWN ON THIS PLAN ARE IN METRES AND CAN BE CONVERTED TO FEET BY DIVIDING BY 0.3048

COORDINATES WERE DERIVED FROM REAL TIME NETWORK OBSERVATIONS (SMARTNET) MTM ZONE 9, NAD83 ORIGINAL.

COORDINATES HAVE BEEN DETERMINED TO AN URBAN ACCURACY IN ACCORDANCE WITH SECTION 14(2) OF O.REG 216/10.

POINT ID	NORTHING	EASTING
14	-	-
205	-	-

COORDINATES CANNOT IN THEMSELVES BE USED TO RE-ESTABLISH CORNERS OR BOUNDARIES SHOWN ON THIS PLAN.

SCHEDULE				
PART	LOT	CONCESSION	PIN	AREA M ²
1			PART OF PIN 04446-1658	4
2			PART OF PIN 04446-1658	117
3			PART OF PIN 04446-0238	2
4	PART OF LOT 23	10	PART OF PIN 04446-0238	35
5			PART OF PIN 04446-0240	12
6			PART OF PIN 04446-0240	39
7			PART OF PIN 04446-0240	0.7

I REQUIRE THIS PLAN TO BE DEPOSITED UNDER THE LAND TITLES ACT.

DATE _____

RECEIVED AND DEPOSITED

DATE _____

"REPRESENTATIVE FOR" LAND REGISTRAR FOR THE LAND TITLES DIVISION OF OTTAWA - CARLETON (N° 4)

JOHN H. GUTRI, O.L.S.

PART 3 - SUBJECT TO EASEMENT INST. N608172
PART 5 - SUBJECT TO RIGHT-OF-WAY PER INST. N330740 & INST. N395646
PART 7 - SUBJECT TO EASEMENT INST. N621224

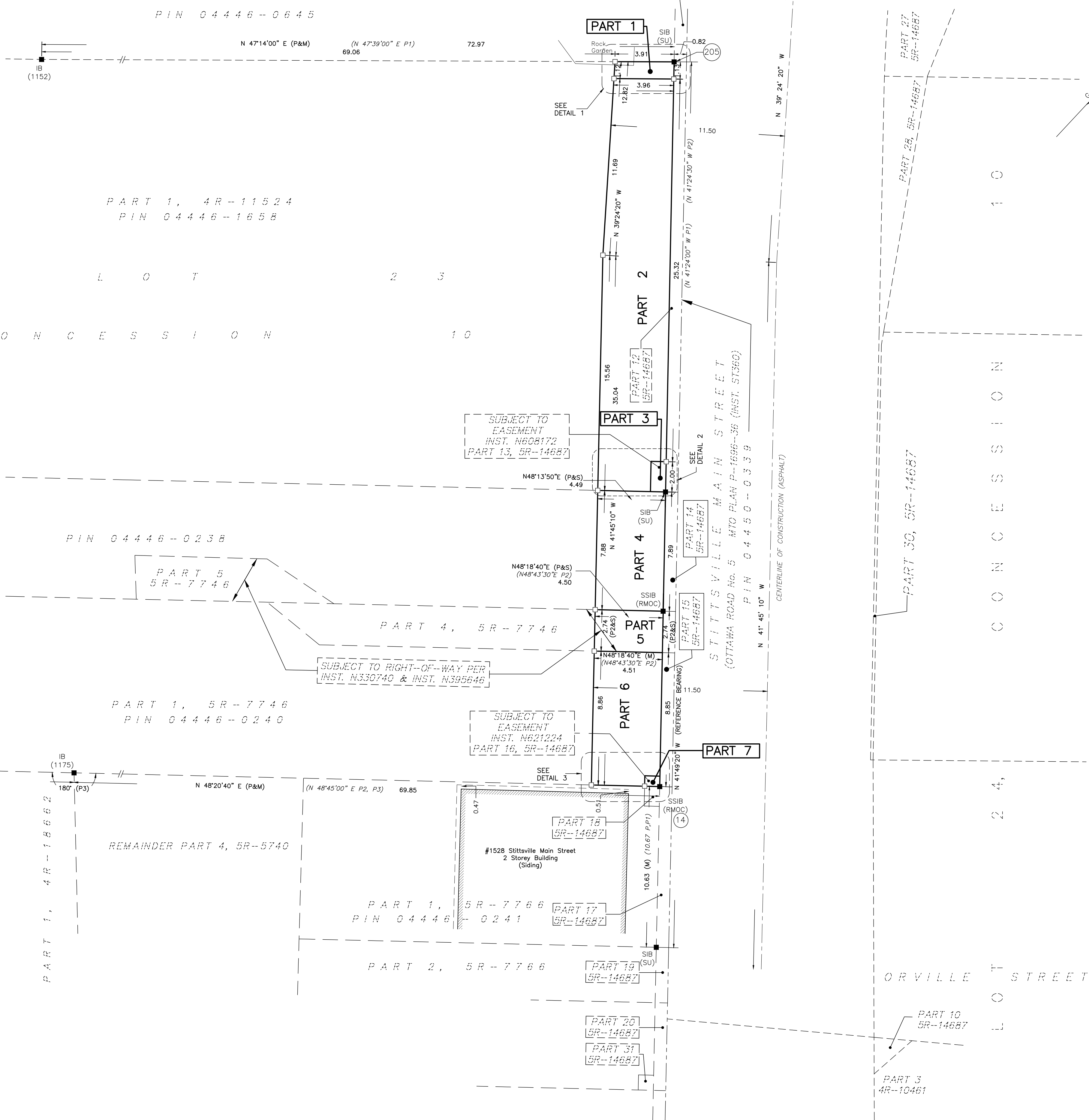
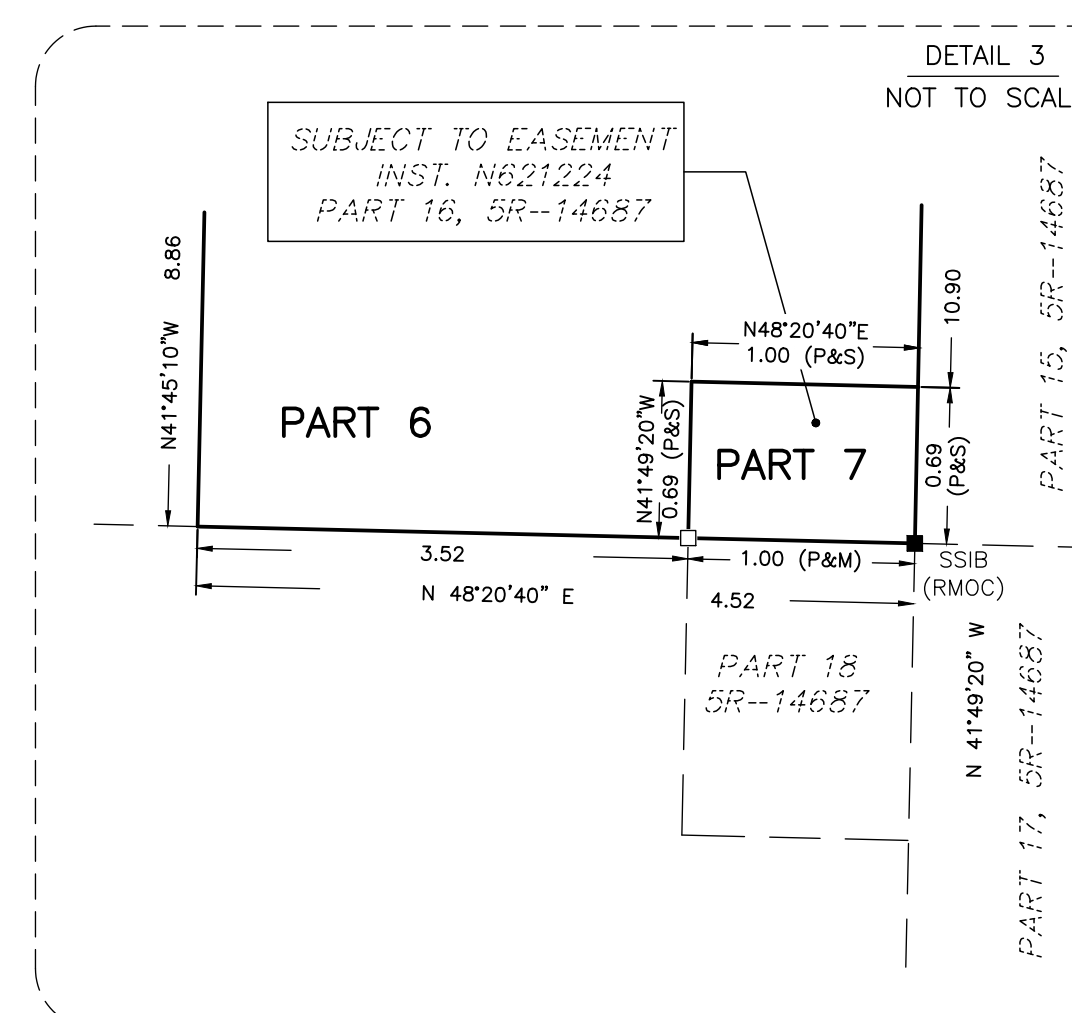
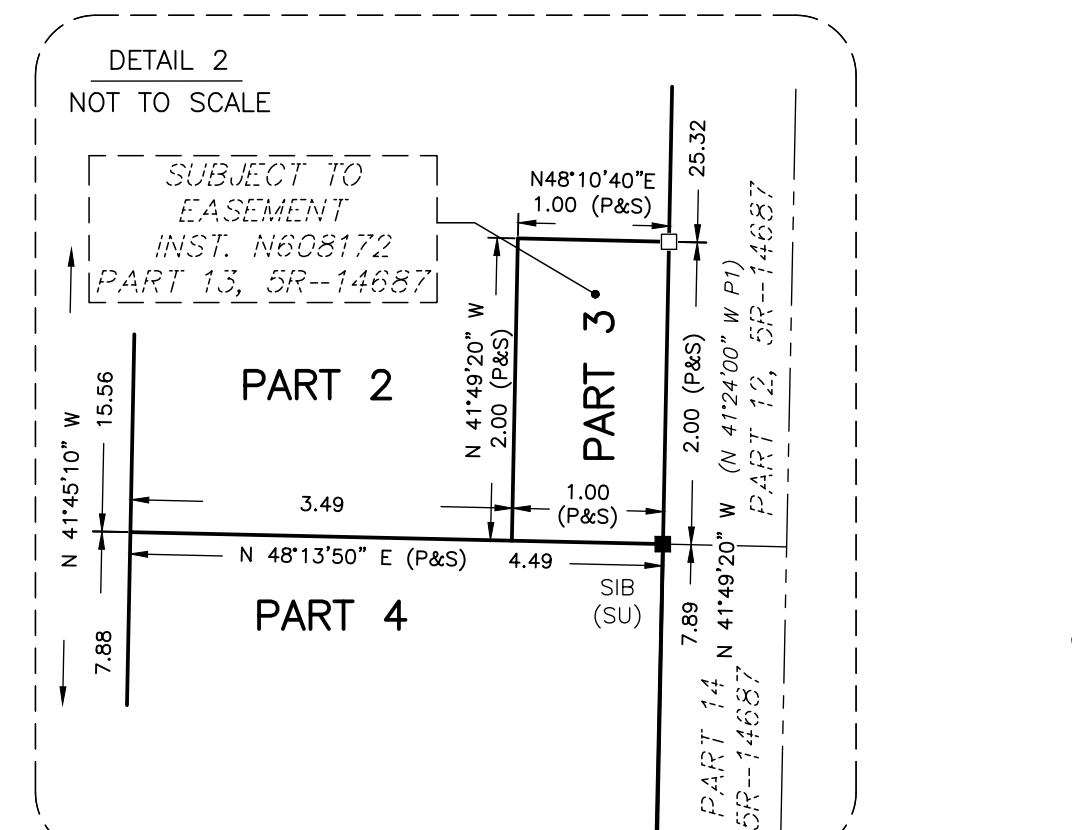
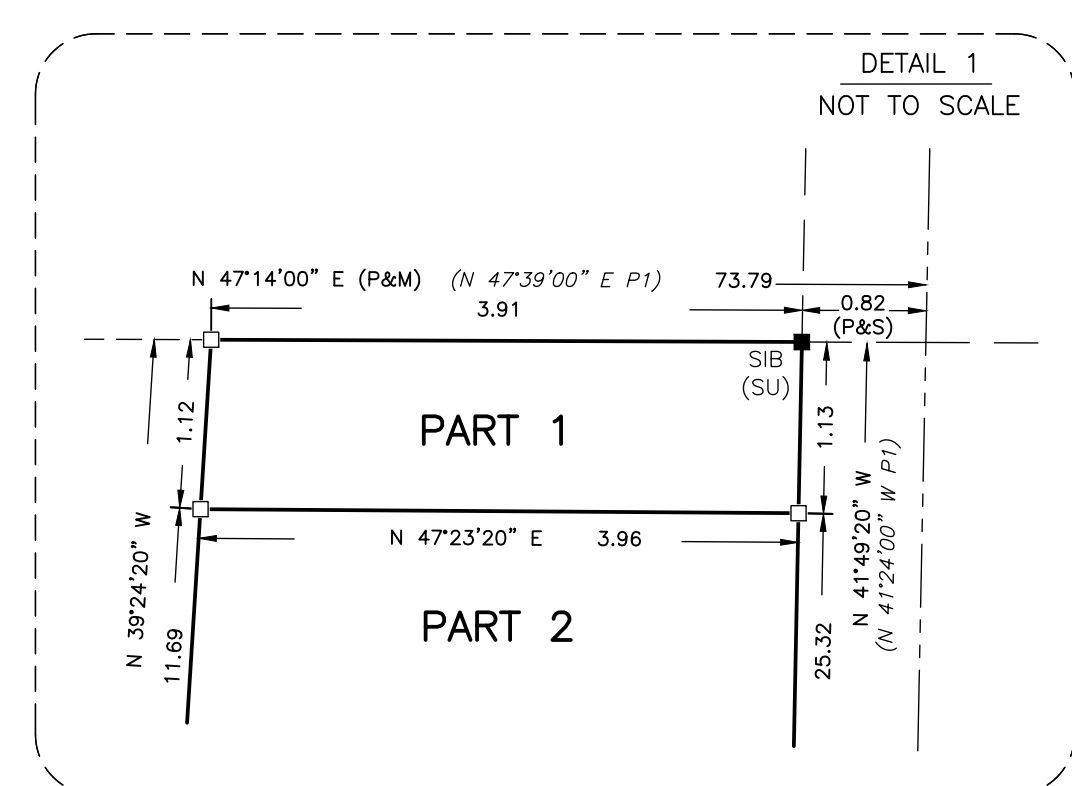
PLAN OF SURVEY OF
PART OF LOT 23
CONCESSION 10
GEOGRAPHIC TOWNSHIP OF GOULBOURN
CITY OF OTTAWA



FAIRHALL, MOFFATT & WOODLAND LIMITED
ONTARIO LAND SURVEYORS

NOTE
BEARINGS ARE GRID DERIVED FROM THE WESTERLY LIMIT OF PARTS 12, 14, 15, 17, AS SHOWN ON PLAN SR-14687, HAVING A BEARING OF N 41° 49' 20" W AND ARE REFERRED TO THE CENTRAL MERIDIAN, 76°30' W LONGITUDE MTM ZONE 9, (NAD27).

- LEGEND**
- - SURVEY MONUMENT SET
 - - SURVEY MONUMENT FOUND
 - SIB - STANDARD IRON BAR
 - (P) - PLAN SR-14687
 - (P1) - PLAN 4R-11524
 - (P2) - PLAN 5R-7746
 - (P3) - PLAN 4R-18662
 - (WIT) - WITNESS
 - (M) - MEASURED
 - (S) - SET
 - (1175) - H. A. KEN SHIPMAN SURVEYING LTD., O.L.S.
 - (RMO) - REGIONAL MUNICIPALITY OF OTTAWA-CARLETON
 - (1152) - J. E. KIHLE, O.L.S.
 - (647) - H. R. FARLEY, O.L.S.
 - (FSD) - FARLEY, SMITH & DENIS SURVEYING LTD., O.L.S. (REF. 379-15)
 - (SU) - SOURCE UNKNOWN
 - PIN - PROPERTY IDENTIFIER NUMBER



NORTHERLY ANGLE OF BLOCK 15532 CARLETON CONDOMINIUM PLAN 532

SURVEYOR'S CERTIFICATE

I CERTIFY THAT:
1. THIS SURVEY AND PLAN ARE CORRECT AND IN ACCORDANCE WITH THE SURVEYS ACT, THE SURVEYORS ACT, THE LAND TITLES ACT AND THE REGULATIONS MADE UNDER THEM.
2. THE SURVEY WAS COMPLETED ON _____, 2022.

DATE _____

JOHN H. GUTRI
ONTARIO LAND SURVEYOR

Fairhall Moffatt & Woodland LIMITED Ontario Land Surveyors Surveying and Land Information Services 100-600 TERRY FOX DRIVE, KANATA, ONTARIO K2L 4B6 TEL: (613) 591-2880 FAX: (613) 591-1495 www.fmw.on.ca	JOB No. AA15600
	E 350253 N 5013227 REFERENCE No. 326(b)-10-GOULBOURN S:\JOBS\AA15600\DWG 18MAR2022 RP_1560A.dwg (ss)