

PLANT MATERIAL SCHEDULE

CODE	BOTANICAL NAME	COMMON NAME	QTY.	SIZE	REMARKS / (N) NATIVE
DECIDUOUS TREES					
AC	AMELANCHIER CANADENSIS	SHADBLow SERVICEBERRY	3	50mm cal	B&B, single-stem / N
AFJ	ACER x FREEMANII JEFFERSRED	AUTUMN BLAZE MAPLE	1	50mm cal	B&B, single-stem / N
CC	CARYA CORDIFORMIS	BITTERNUT HICKORY	1	50mm cal	B&B, single-stem / N
CO	CELTIS OCCIDENTALIS	COMMON HACKBERRY	3	50mm cal	B&B, single-stem / N
GB	GINKGO BILOBA 'AUTUMN GOLD'	AUTUMN GOLD MAIDENHAIR TREE	5	50mm cal	B&B, single-stem
GT	GLEDITSIA TRIACANTHOS SKYLINE	SKYLINE HONEYLOCUST	5	50mm cal	B&B, single-stem
QM	QUERCUS MACROCARPA	BUR OAK	2	50mm cal	B&B, single-stem / N
QR	QUERCUS RUBRA	RED OAK	2	50mm cal	B&B, single-stem / N
SR	SYRINGA RETICULATA IVORY SILK	IVORY SILK JAPANESE TREE LILAC	4	50mm cal	B&B, single-stem
CONIFEROUS TREES					
PG	PICEA GLAUCA	WHITE SPRUCE	4	200 cm ht	B&B / N
SHRUBS					
CR	CORNUS RACEMOSA	GRAY DOGWOOD	22	50cm ht	potted, 100cm o/c / N
CS	CORNUS SERICCA	RED OSIER DOGWOOD	44	50cm ht	potted, 100cm o/c / N
DL	DIERVILLA LONGERA	BUSH HONEYSUCKLE	12	50cm ht	potted, 100cm o/c / N
HAA	HYDRANGEA ARBORESCENS ANNABELLE	ANNABELLE HYDRANGEA	5	50cm ht	potted, 100cm o/c
HPG	HYDRANGEA PANICULATA GRANDIFLORA	PEE GEE HYDRANGEA	6	50cm ht	potted, 100cm o/c
JCF	JUNIPERUS CHINENSIS FAIRVIEW	FAIRVIEW JUNIPER	27	125cm ht	B&B, 100cm o/c
PO	PHYSCARPUS OPULIFOLIUS	COMMON NINEBARK	30	50cm ht	potted, 100cm o/c / N
PON	PHYSCARPUS OPULIFOLIUS NANUS	DWARF NINEBARK	11	50cm ht	potted, 100cm o/c
PSD	PHILADELPHUS x SNOW DWARF	SNOW DWARF MOCK ORANGE	15	50cm ht	potted, 100cm o/c
RB	ROSA BLANDA	SHRUB ROSE	47	50cm ht	potted, 100cm o/c / N
RHA	RHUS AROMATICA	FRAGRANT SUMAC	21	50cm ht	potted, 100cm o/c / N
SA	SYMPHORICARPUS ALBUS	SNOWBERRY	22	50cm ht	potted, 100cm o/c / N
SJF	SPIRAEA JAPONICA 'FROEBELII'	FROEBEL SPIREA	7	50cm ht	potted, 100cm o/c
ST	SPIRAEA TRILOBATA	DWARF VANHOUTTEI SPIREA	7	50cm ht	potted, 100cm o/c
WFRU	WEIGELA FLORIDA 'RUMBA'	RUMBA WEIGELA	11	50cm ht	potted, 100cm o/c

PLANT MATERIAL SCHEDULE

CODE	BOTANICAL NAME	COMMON NAME	QTY.	SIZE	REMARKS / (N) NATIVE
PERENNIALS					
Ach	ACHILLEA millefolium	YARROW	15	15 cm pot	plant 60cm o/c / N
Ag	AGASTACHE foeniculum	ANISE HYSSOP	10	15 cm pot	plant 60cm o/c / N
Dal	DALEA purpurea	PURPLE PRAIRIE CLOVER	14	15 cm pot	plant 60cm o/c / N
Ech1	ECHINACEA purpurea	PURPLE CONEFLOWER	12	15 cm pot	plant 60cm o/c / N
Ech2	ECHINACEA pallida	PALE PURPLE CONEFLOWER	9	15 cm pot	plant 60cm o/c / N
Ech3	ECHINACEA angustifolia	NARROW LEAF CONEFLOWER	7	15 cm pot	plant 60cm o/c / N
Ger	GERANIUM maculatum	WILD GERANIUM	19	15 cm pot	plant 60cm o/c / N
Li	LIATRIS spicata	DENSE BLAZING STAR	20	15 cm pot	plant 60cm o/c / N
Rat	RATIBIDA pinnata	GRAY-HEAD CONEFLOWER	3	15 cm pot	plant 60cm o/c / N
Rud	RUDEBECKIA laciniata	CUTLEAF CONEFLOWER	9	15 cm pot	plant 60cm o/c / N
ORNAMENTAL GRASSES					
Ca1	CALAMAGROSTIS x acutiflora Karl Foerster	KARL FOERSTER REED GRASS	5	15cm pot	plant 75cm o/c
Ca2	CALAMAGROSTIS canadensis	CANADA BLUEJOINT	18	15 cm pot	plant 75cm o/c / N
CaP	CAREX pensylvanica	OAK SEDGE	25	15 cm pot	plant 40cm o/c / N
Sor	SORGHASTRUM nutans	INDIAN GRASS	6	15 cm pot	plant 75cm o/c / N
Sp	SPOROBOLUS heterolepis	PRAIRIE DROPSEED	20	15 cm pot	plant 60cm o/c / N

PLANT MATERIAL SCHEDULE (BIORETENTION SWALE)

CODE	BOTANICAL NAME	COMMON NAME	QTY.	SIZE	REMARKS	ZONE: H (HIGH) M (MEDIUM) L (LOW)
DECIDUOUS TREES						
AR1	ACER RUBRUM	RED MAPLE	1	50mm cal	B&B, Single Stem	M, H
QM1	QUERCUS MACROCARPA	BUR OAK	1	50mm cal	B&B, Single Stem	M, H
CC1	CARYA CORDIFORMIS	BITTERNUT HICKORY	1	50mm cal	B&B, Single Stem	H
DECIDUOUS SHRUBS						
CS1	CORNUS SERICCA	RED OSIER DOGWOOD	11	50cm ht	potted, 100cm o/c	M, H
DL1	DIERVILLA LONGERA	BUSH HONEYSUCKLE	9	50cm ht	potted, 100cm o/c	M, H
RO1	RUBUS ODORATUS	FLOWERING RASPBERRY	12	50cm ht	potted, 100cm o/c	M, H
SA1	SAUXISBOCOURTII	Pussy Willow	8	50cm ht	potted, 100cm o/c	M, H
VL1	VIBURNUM LENTAGO	NANNYBERRY	18	50cm ht	potted, 100cm o/c	M, H
BROADLEAF HERBACEOUS (and FERNS)						
Asc1	ASCLEPIAS incarnata	SWAMP MILKWEED	35	10 cm pot	plant 60cm o/c	L
Ver1	VERBENA stricta	HOARY VERVAIN	30	10 cm pot	plant 60cm o/c	M, H
GRAMINOIDS (GRASS-LIKE)						
And1	ANDROPOGON gerardi	BIG BLUESTEM GRASS	40	15cm pot	plant 75cm o/c	L, M
Cr2	CAREX bresler	BREB'S SEDGE	35	15cm pot	plant 60cm o/c	M, H
Des1	DISCHAMPSA caespitosa	TUFF HAIR GRASS	30	10 cm pot	plant 60cm o/c	L, M
Ely1	ELYMUS virginicus var. virginicus	VIRGINIA - WILD RYE	30	15cm pot	plant 75cm o/c	L, M

BIO-SWALE PLANTING NOTES:
 1. Contractor shall guarantee and provide maintenance on all plant material which form part of LID feature (bio-swale) for a period of TWO (2) full years from the date of final acceptance.
 2. Broadleaf Herbaceous and Graminoids forming part of LID feature shall be planted in a continuous prepared bed of 450mm depth amended topsoil covered over with 75mm depth shredded hardwood bark mulch (aged min. 12 mo.).

- *topsoil mixture to contain:
 - 85-90% sand
 - 8-12% soil fines
 - 3-5% organic matter
 - P-Index value 10 to 30ppm
 - pH between 5.5-7.5

GENERAL NOTES

- This drawing shall be read in conjunction with all relevant Architectural, Engineering and related Drawings and Documents.
- Refer to Engineering Drawings for Grading and Servicing.
- Refer to Architectural Drawings for Site layout.
- Contractor shall provide the location(s) of all services/utilities by consulting Municipal Authorities and Utility companies and shall be responsible for adequate protection from damage during construction.
- Plant material shall be No. 1 Grade and shall comply with the Metric Guide Specifications for Nursery Stock (latest edition), published by the Canadian Nursery Trades Association.
- Plant Material locations are Schematic / Approximate only. Contractor shall stake out locations on site prior to work.
- Contractor shall guarantee all plant material for a period of one (1) full year from the date of final acceptance.
- Shrubs shall be planted in a continuous prepared bed of 450mm depth planting soil mix covered over with a woven polypropylene weed control fabric (LANDSCAPE FABRIC-Green-Line by Thrace-LINQ) and 75mm depth composted pine mulch to finish grade, as specified.
- Perennials and Ornamental Grasses shall be planted in a continuous prepared bed of 450mm depth planting soil mix. (USE NO WEED CONTROL FABRIC OR MULCH).
- Sod areas to receive 125mm topsoil. Sod shall be No. 1 quality conforming to the Canadian Nursery Sod Growers Specification.
- Reinstate all areas damaged or disturbed beyond the limit of work.
- Plant Material substitutions shall not be permitted without written approval from the Consultant.
- Contractor shall advise Consultant a minimum of 48hrs. prior to proceeding landscape work and any required Field Reviews.
- THIS PLAN HAS BEEN PREPARED FOR MUNICIPAL SITE PLAN APPROVAL ONLY AND MAY NOT BE USED FOR ANY OTHER PURPOSE.**

LEGEND / SYMBOL

- EXISTING TREE TO BE RETAINED (Refer to TOR)
- CRZ (Critical Root Zone)
- PROPOSED DECIDUOUS TREE DETAIL 14.2.01
- PROPOSED CONIFEROUS TREE DETAIL 14.2.01
- PROPOSED SHRUBS, PERENNIALS, ORNAMENTAL GRASSES DETAIL 14.2.01
- PROPOSED UNIT PAVEMENT A
- PROPOSED UNIT PAVEMENT B
- PROPOSED UNIT PAVEMENT C
- PROPOSED MODIFIED CONCRETE CURBS DETAIL 6L2.01
- PROPOSED ALUMINUM / GLASS RAILINGS
- PROPOSED SOIL CELL(S) DETAIL 4L2.01
- PROPOSED 1.2m HEIGHT BLACK VINYL CHAIN-LINK FENCE DETAIL 4L2.01
- PROPOSED BICYCLE PARKING DIMENSION PER SPACE: 0.6m x 1.6m SPACES PROVIDED: 17 PROPOSED BICYCLE RACK PROPOSED QTY: 10 DETAIL 3L2.01
- PROPOSED TREE PROTECTION BARRIER DETAIL 5L2.01
- PROPOSED EROSION CONTROL TYPE: EOC-28 by East Coast Erosion Control DOUBLE NET COCONUT BIODEGRADABLE ROLLED EROSION CONTROL PRODUCT APPLY / INSTALL WHERE SLOPES EXCEED EXCEED 3H:1V



OWNER:
 KRUMAC HOLDINGS INC.
 38 Auriga Dr., Suite 200, Ottawa, ON K2E 8A5

APPLICANT:
 EGIS CANADA LTD.
 115 Walgreen Rd., Carp, ON K0A 1L0

ARCHITECT:
 VANDENBERG & WILDEBOER, ARCHITECTS
 160 Flamborough Way, ON K2K 3H9

CIVIL ENGINEER:
 MACINTOSH PERRY
 115 Walgreen Rd., Carp, ON K0A 1L0

GEOTECHNICAL ENGINEER:

ONTARIO LAND SURVEYOR:
 FAIRHALL, MOFFATT, WOODLAND LTD.
 100-600 Terry Fox Dr., Kanata, ON K2L 4B6

LANDSCAPE ARCHITECT
 LEVSTEK CONSULTANTS INC.
 5871 Hugh Cresc., Ottawa, ON K0A 2W0

LEGAL DESCRIPTION:
 Part 1 of 4R-1152 and Part 1 of 5R-7746 and Part 4 & 5 of 5R-7746 - Part of Lot 23, Concession 10, Goulbourn, City of Ottawa

FOR APPROVAL ONLY

no.	date	revision
4.	NOV. 11/24	PER CITY COMMENTS (3)
3.	JULY 11/24	PER CITY COMMENTS (2)
2.	MAY 3/24	PER CITY COMMENTS (1)
1.	FEB. 9/24	ISSUE FOR SPA

North Arrow

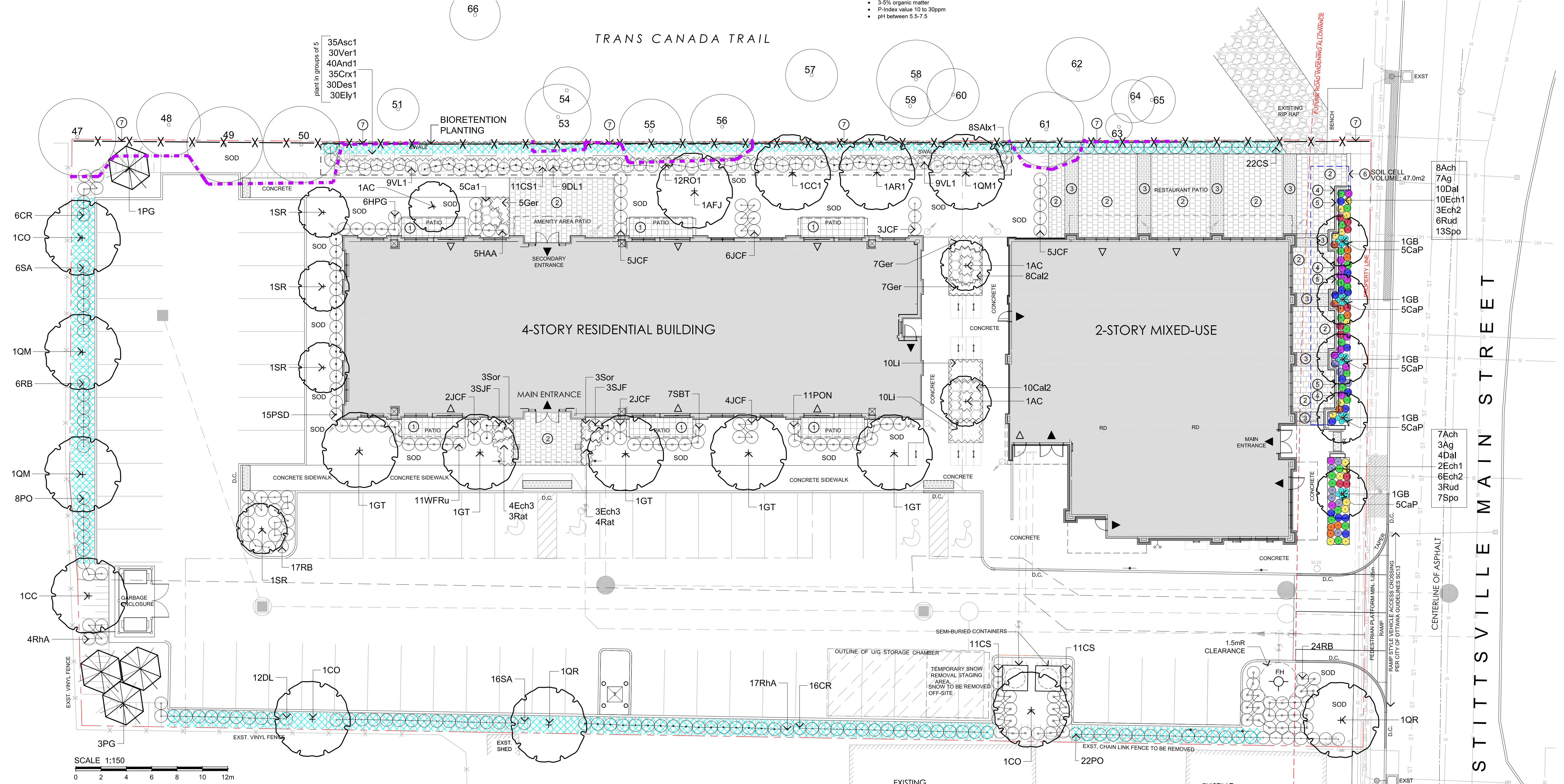
Contractor shall check and verify all dimensions on site and report all errors and/or omissions to the Consultant, and by-laws.
 Work to be done in accordance with all applicable codes and by-laws.
 Do not scale Drawing.
 This Drawing shall not be used for construction until signed by the Consultant.
 Copyright reserved. This Drawing is the exclusive property of Levstek Consultants Inc. and shall not be used without consent.

Consultant
LEVSTEK CONSULTANTS
 LANDSCAPE ARCHITECTS
 5871 Hugh Cresc., Ottawa, Ontario, K0A 2W0
 613-828-6238

Project
 1518-1524-1526
 STITTSVILLE MAIN STREET
 STITTSVILLE, ONTARIO

Drawing Title
LANDSCAPE PLAN

Scale	Project No.	Drawing No.
1:150	1233	L1.01



THIS DRAWING IS COLOUR DEPENDENT. NON-COLOUR COPIES MAY ALTER INTERPRETATION.

D07-12-24-0093

PLANT MATERIAL SCHEDULE

CODE	BOTANICAL NAME	COMMON NAME	QTY.	SIZE	REMARKS / (N) NATIVE
DECIDUOUS TREES					
AC	AMELANCHIER CANADENSIS	SHADBLOW SERVICEBERRY	3	50mm cal	B&B, single-stem / N
AFJ	ACER x FREEMANII JEFFERSRED	AUTUMN BLAZE MAPLE	1	50mm cal	B&B, single-stem / N
CC	CARYA CORDIFORMIS	BITTERNUT HICKORY	1	50mm cal	B&B, single-stem / N
CO	CELTIS OCCIDENTALIS	COMMON HACKBERRY	3	50mm cal	B&B, single-stem / N
GB	GINKGO BILOBA 'AUTUMN GOLD'	AUTUMN GOLD MAIDENHAIR TREE	5	50mm cal	B&B, single-stem
GT	GLEDITSIA TRIACANTHOS SKYLINE	SKYLINE HONEYLOCUST	5	50mm cal	B&B, single-stem
QM	QUERCUS MACROCARPA	BUR OAK	2	50mm cal	B&B, single-stem / N
QR	QUERCUS RUBRA	RED OAK	2	50mm cal	B&B, single-stem / N
SR	SYRINGA RETICULATA 'IVORY SILK'	IVORY SILK JAPANESE TREE LILAC	4	50mm cal	B&B, single-stem
CONIFEROUS TREES					
PG	PICEA GLAUCA	WHITE SPRUCE	4	200 cm ht	B&B / N
SHRUBS					
CR	CORNUS RACEMOSA	GRAY DOGWOOD	22	50cm ht	potted, 100cm o/c / N
CS	CORNUS SERICEA	RED OSIER DOGWOOD	44	50cm ht	potted, 100cm o/c / N
DL	DIERVILLA LONGERA	BUSH HONEYSUCKLE	12	50cm ht	potted, 100cm o/c / N
HAA	HYDRANGEA ARBORESCENS ANNABELLE	ANNABELLE HYDRANGEA	5	50cm ht	potted, 100cm o/c
HPG	HYDRANGEA PANICULATA GRANDIFLORA	PEE GEE HYDRANGEA	6	50cm ht	potted, 100cm o/c
JCF	JUNIPERUS CHINENSIS FAIRVIEW	FAIRVIEW JUNIPER	27	125cm ht	B&B, 100cm o/c
PO	PHYSCARPUS OPUULIFOLIUS	COMMON NINEBARK	30	50cm ht	potted, 100cm o/c / N
PON	PHYSCARPUS OPUULIFOLIUS NANUS	DWARF NINEBARK	11	50cm ht	potted, 100cm o/c
PSD	PHILADELPHUS x SNOW DWARF	SNOW DWARF MOCK ORANGE	15	50cm ht	potted, 100cm o/c
RB	ROSA BLANDA	SHRUB ROSE	47	50cm ht	potted, 100cm o/c / N
RHA	RHUS AROMATICA	FRAGRANT SUMAC	21	50cm ht	potted, 100cm o/c / N
SA	SYMPHORICARPUS ALBUS	SNOWBERRY	22	50cm ht	potted, 100cm o/c / N
SJF	SPIRAEA JAPONICA 'FROEBELI'	FROEBEL SPIREA	7	50cm ht	potted, 100cm o/c
ST	SPIRAEA TRILOBATA	DWARF VANHOUTTEI SPIREA	7	50cm ht	potted, 100cm o/c
WFRU	WEGELA FLORIDA 'RUMBA'	RUMBA WEGELA	11	50cm ht	potted, 100cm o/c

PLANT MATERIAL SCHEDULE

CODE	BOTANICAL NAME	COMMON NAME	QTY.	SIZE	REMARKS / (N) NATIVE
PERENNIALS					
Ach	ACHILLEA millefolium	YARROW	15	15 cm pot	plant 60cm o/c / N
Ag	AGASTACHE foeniculum	ANISE HYSSOP	10	15 cm pot	plant 60cm o/c / N
Dal	DALEA purpurea	PURPLE PRAIRIE CLOVER	14	15 cm pot	plant 60cm o/c / N
Ech1	ECHINACEA purpurea	PURPLE CONEFLOWER	12	15 cm pot	plant 60cm o/c / N
Ech2	ECHINACEA pallida	PALE PURPLE CONEFLOWER	9	15 cm pot	plant 60cm o/c / N
Ech3	ECHINACEA angustifolia	NARROW LEAF CONEFLOWER	7	15 cm pot	plant 60cm o/c / N
Ger	GERANIUM maculatum	WILD GERANIUM	19	15 cm pot	plant 60cm o/c / N
LI	LIATRIS spicata	DENSE BLAZING STAR	20	15 cm pot	plant 60cm o/c / N
Rat	RATIBIDA pinnata	GRAY-HEAD CONEFLOWER	3	15 cm pot	plant 60cm o/c / N
Rud	RUDEBECKIA laciniata	CUTLEAF CONEFLOWER	9	15 cm pot	plant 60cm o/c / N
ORNAMENTAL GRASSES					
Ca1	CALAMAGROSTIS x acutiflora Karl Foerster	KARL FOERSTER REED GRASS	5	15cm pot	plant 75cm o/c
Ca2	CALAMAGROSTIS canadensis	CANADA BLUEJOINT	18	15 cm pot	plant 75cm o/c / N
CaP	CAREX pensylvanica	OAK SEDGE	25	15 cm pot	plant 40cm o/c / N
Sor	SORGHASTRUM nutans	INDIAN GRASS	6	15 cm pot	plant 75cm o/c / N
Sp	SPOROBOLUS heterolepis	PRAIIE DROPSEED	20	15 cm pot	plant 60cm o/c / N

PLANT MATERIAL SCHEDULE (BIORETENTION SWALE)

CODE	BOTANICAL NAME	COMMON NAME	QTY.	SIZE	REMARKS	ZONE: H (HIGH) M (MEDIUM) L (LOW)
DECIDUOUS TREES						
AR1	ACER RUFURUM	RED MAPLE	1	50mm cal	B&B, Single Stem	M, H
DM1	QUERCUS MACROCARPA	BUR OAK	1	50mm cal	B&B, Single Stem	M, H
CC1	CARYA CORDIFORMIS	BITTERNUT HICKORY	1	50mm cal	B&B, Single Stem	H
DECIDUOUS SHRUBS						
ES1	CORNUS SERICEA	RED OSIER DOGWOOD	11	50cm ht	potted, 100cm o/c	M, H
DL1	DIERVILLA LONGERA	BUSH HONEYSUCKLE	9	50cm ht	potted, 100cm o/c	M, H
RO1	RUBUS ODORATUS	FLOWERING RASPBERRY	12	50cm ht	potted, 100cm o/c	M, H
SAW1	SAUX DISCOLOR	Pussy Willow	8	50cm ht	potted, 100cm o/c	M, H
VL1	VIBURNUM LENTAGO	NANNYBERRY	18	50cm ht	potted, 100cm o/c	M, H
BROADLEAF HERBACEOUS (and FERNS)						
Asc1	ASCLEPIAS incarnata	SWAMP MILKWEED	35	10 cm pot	plant 60cm o/c	L
Ver1	VERBENA stricta	HOARY VERVAIN	30	10 cm pot	plant 60cm o/c	M, H
GRAMINOIDS (GRASS-LIKE)						
And1	ANDROPOGON gerardi	BIG BLUESTEM GRASS	40	15cm pot	plant 75cm o/c	L, M
Co1	CAREX beweri	BEBB'S SEDGE	35	15cm pot	plant 60cm o/c	M, H
De1	DISCHAMPSA caespitosa	TUFF HAIR GRASS	30	10 cm pot	plant 60cm o/c	L, M
Ely1	ELYMUS virginicus var. virginicus	VIRGINIA - WILD RYE	30	15cm pot	plant 75cm o/c	L, M

BIO-SWALE PLANTING NOTES:
 1. Contractor shall guarantee and provide maintenance on all plant material which form part of LID feature (bio-swale) for a period of TWO (2) full years from the date of final acceptance.
 2. Broadleaf Herbaceous and Graminoids forming part of LID feature shall be planted in a continuous prepared bed of 450mm depth amended topsoil covered over with 75mm depth shredded hardwood bark mulch (aged min. 12 mo.).

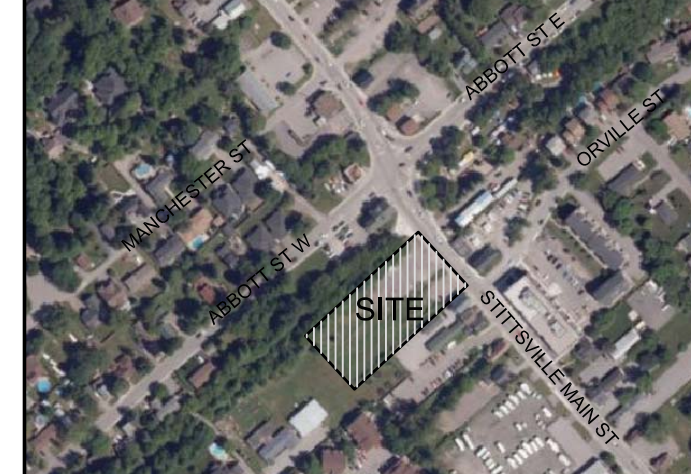
- *topsoil mixture to contain:
 - 85-88% sand
 - 8-12% soil fines
 - 3-5% organic matter
 - P-Index value 10 to 30ppm
 - pH between 5.5-7.5

GENERAL NOTES

- This drawing shall be read in conjunction with all relevant Architectural, Engineering and related Drawings and Documents.
- Refer to Engineering Drawings for Grading and Servicing.
- Refer to Architectural Drawings for Site layout.
- Contractor shall provide the location(s) of all services/utilities by consulting Municipal Authorities and Utility companies and shall be responsible for adequate protection from damage during construction.
- Plant material shall be No. 1 Grade and shall comply with the Metric Guide Specifications for Nursery Stock (latest edition), published by the Canadian Nursery Trades Association.
- Plant Material locations are Schematic / Approximate only. Contractor shall stake out locations on site prior to work.
- Contractor shall guarantee all plant material for a period of one (1) full year from the date of final acceptance.
- Shrubs shall be planted in a continuous prepared bed of 450mm depth planting soil mix covered over with a woven polypropylene weed control fabric (LANDSCAPE FABRIC-Green-Line by Thrace-LINQ) and 75mm depth composted pine mulch to finish grade, as specified.
- Perennials and Ornamental Grasses shall be planted in a continuous prepared bed of 450mm depth planting soil mix. (USE NO WEED CONTROL FABRIC OR MULCH).
- Sod areas to receive 125mm topsoil. Sod shall be No. 1 quality conforming to the Canadian Nursery Sod Growers Specification.
- Reinstate all areas damaged or disturbed beyond the limit of Work.
- Plant Material substitutions shall not be permitted without written approval from the Consultant.
- Contractor shall advise Consultant a minimum of 48hrs. prior to proceeding landscape work and any required Field Reviews.
- THIS PLAN HAS BEEN PREPARED FOR MUNICIPAL SITE PLAN APPROVAL ONLY AND MAY NOT BE USED FOR ANY OTHER PURPOSE.**

LEGEND / SYMBOL

- EXISTING TREE TO BE RETAINED (Refer to TOR)
- CRZ (Critical Root Zone)
- PROPOSED DECIDUOUS TREE DETAIL 11.2.01
- PROPOSED CONIFEROUS TREE DETAIL 11.2.01
- PROPOSED SHRUBS, PERENNIALS, ORNAMENTAL GRASSES DETAIL 11.2.01
- PROPOSED UNIT PAVEMENT A
- PROPOSED UNIT PAVEMENT B
- PROPOSED UNIT PAVEMENT C
- PROPOSED MODIFIED CONCRETE CURBS DETAIL 6L2.01
- PROPOSED ALUMINUM / GLASS RAILINGS
- PROPOSED SOIL CELL(S) DETAIL 3L2.01
- PROPOSED 1.2m HEIGHT BLACK VINYL CHAIN-LINK FENCE DETAIL 4L2.01
- PROPOSED BICYCLE PARKING DIMENSION PER SPACE: 0.6m x 1.6m SPACES PROVIDED: 17 PROPOSED BICYCLE RACK PROPOSED DTY-10 DETAIL 3L2.01
- PROPOSED TREE PROTECTION BARRIER DETAIL 5L2.01
- PROPOSED EROSION CONTROL TYPE: EOC-28 by East Coast Erosion Control DOUBLE NET COCONUT BIODEGRADABLE ROLLED EROSION CONTROL PRODUCT APPLY / INSTALL WHERE SLOPES EXCEED 3:1
- PROPOSED SOIL VOLUME (SV) DATA



LOCATION PLAN



OWNER:
 KRUMAC HOLDINGS INC.
 38 Auriga Dr., Suite 200, Ottawa, ON K2E 8A5

APPLICANT:
 EGIS CANADA LTD.
 115 Walgreen Rd., Carp, ON K0A 1L0

ARCHITECT:
 VANDENBERG & WILDEBOER, ARCHITECTS
 160 Flamborough Way, ON K2K 3H9

CIVIL ENGINEER:
 MACINTOSH PERRY
 115 Walgreen Rd., Carp, ON K0A 1L0

GEOTECHNICAL ENGINEER:

ONTARIO LAND SURVEYOR:
 FAIRHALL, MOFFATT, WOODLAND LTD.
 100-600 Terry Fox Dr., Ancaster, ON K2L 4B6

LANDSCAPE ARCHITECT
 LEVSTEK CONSULTANTS INC.
 5871 Hugh Cresc., Ottawa, ON K0A 2W0

LEGAL DESCRIPTION:
 Part 1 of 4R-1152 and Part 1 of 5R-7746 and Part 4 & 5 of 5R-7746 - Part of Lot 23, Concession 10, Goulbourn, City of Ottawa

FOR APPROVAL ONLY

no.	date	revision
4.	NOV. 11/24	PER CITY COMMENTS (3)
3.	JULY 11/24	PER CITY COMMENTS (2)
2.	MAY 3/24	PER CITY COMMENTS (1)
1.	FEB. 9/24	ISSUE FOR SPA

North Arrow

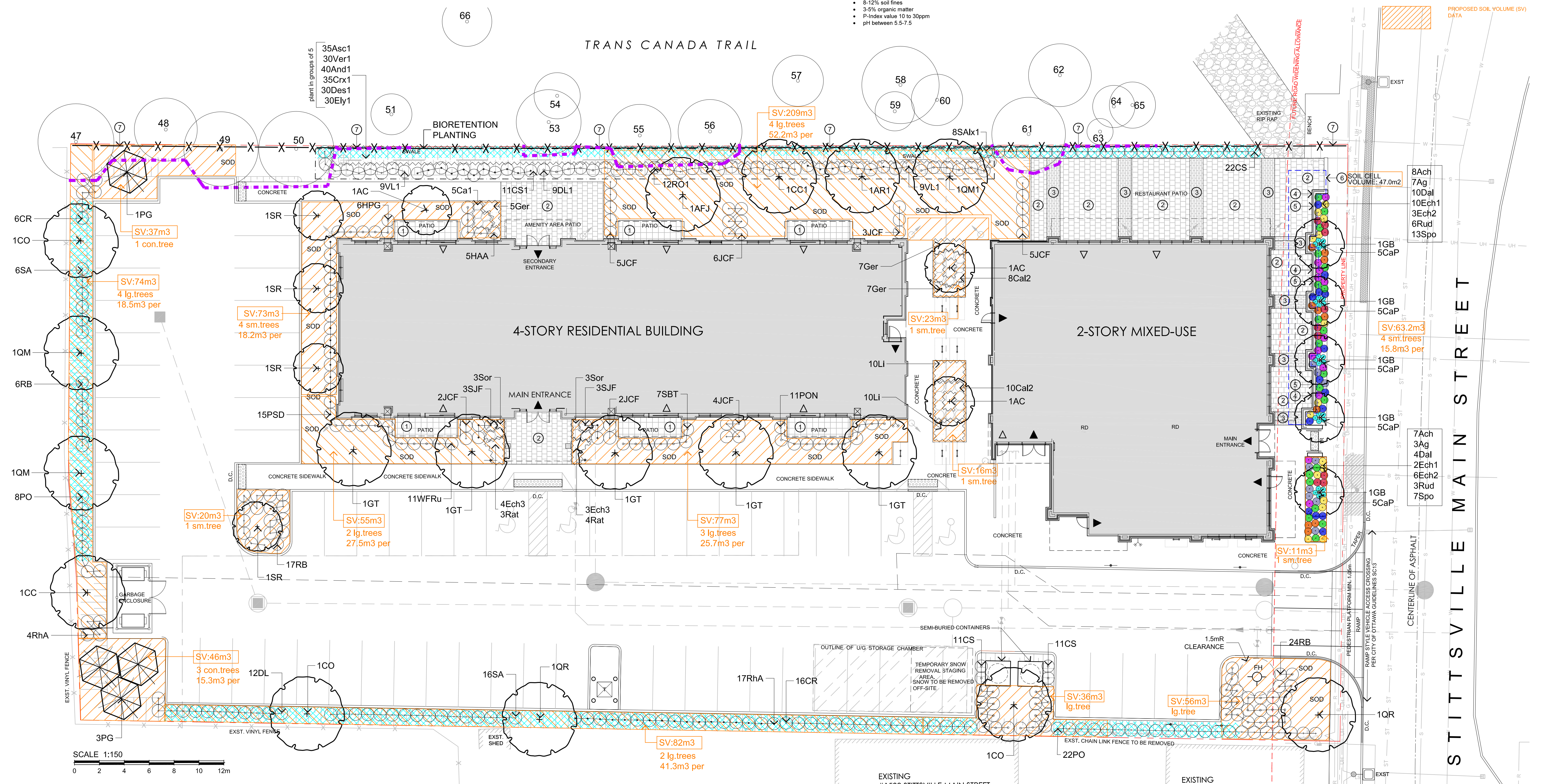
Contractor shall check and verify all dimensions on site and report all errors and/or omissions to the Consultant.
 Work to be done in accordance with all applicable codes and by-laws.
 Do not scale Drawing.
 This Drawing shall not be used for construction until signed by the Consultant.
 Copyright reserved. This Drawing is the exclusive property of Levstek Consultants Inc. and shall not be used without consent.

Consultant
LEVSTEK CONSULTANTS
 LANDSCAPE ARCHITECTS
 5871 Hugh Cresc., Ottawa, Ontario, K0A 2W0
 613-828-6238

Project
 1518-1524-1526
 STITTSVILLE MAIN STREET
 STITTSVILLE, ONTARIO

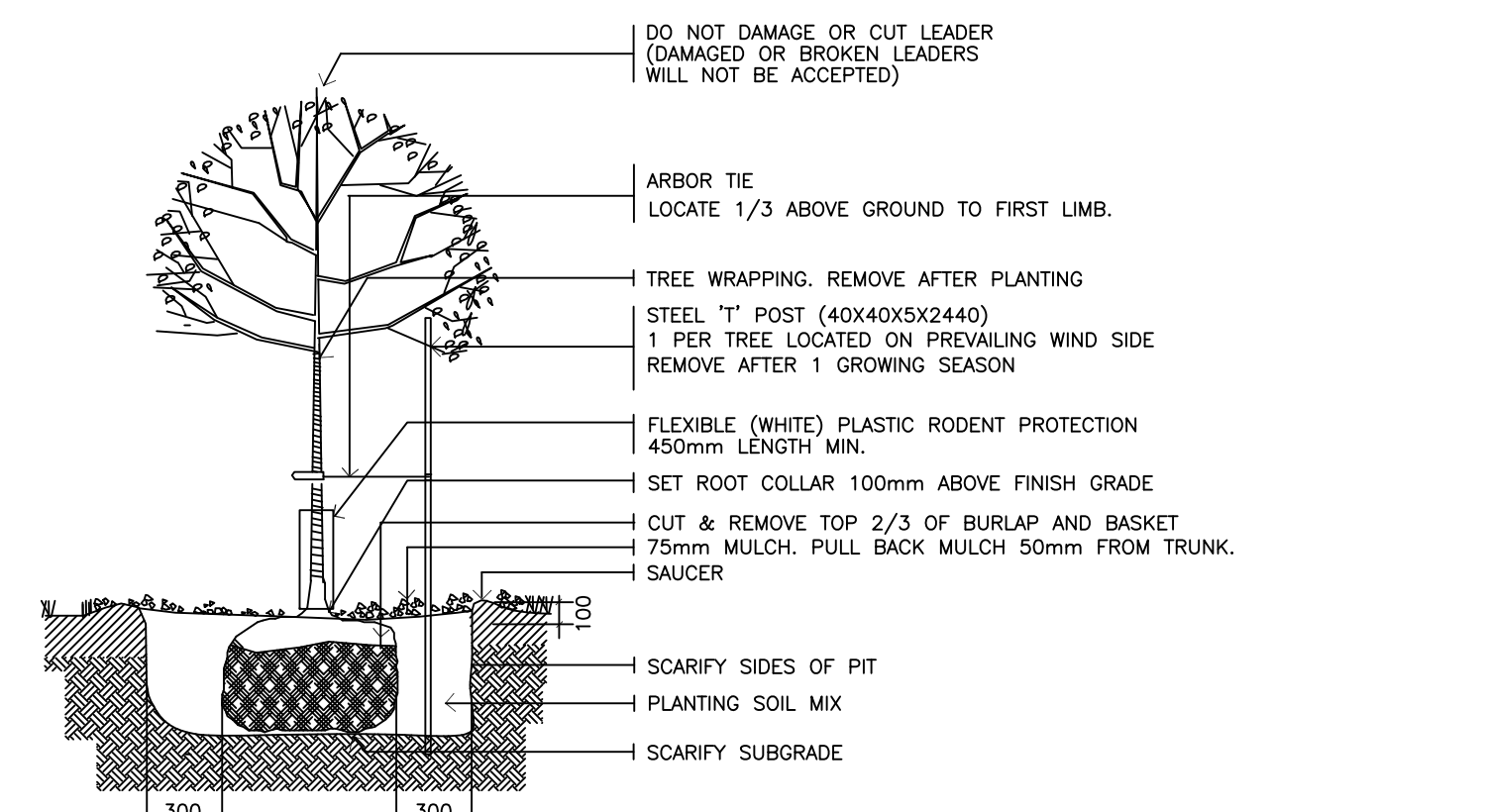
LANDSCAPE PLAN
 SOIL VOLUME DATA LAYER

Scale 1:150 Project No. 1233 Drawing No. L1.01B

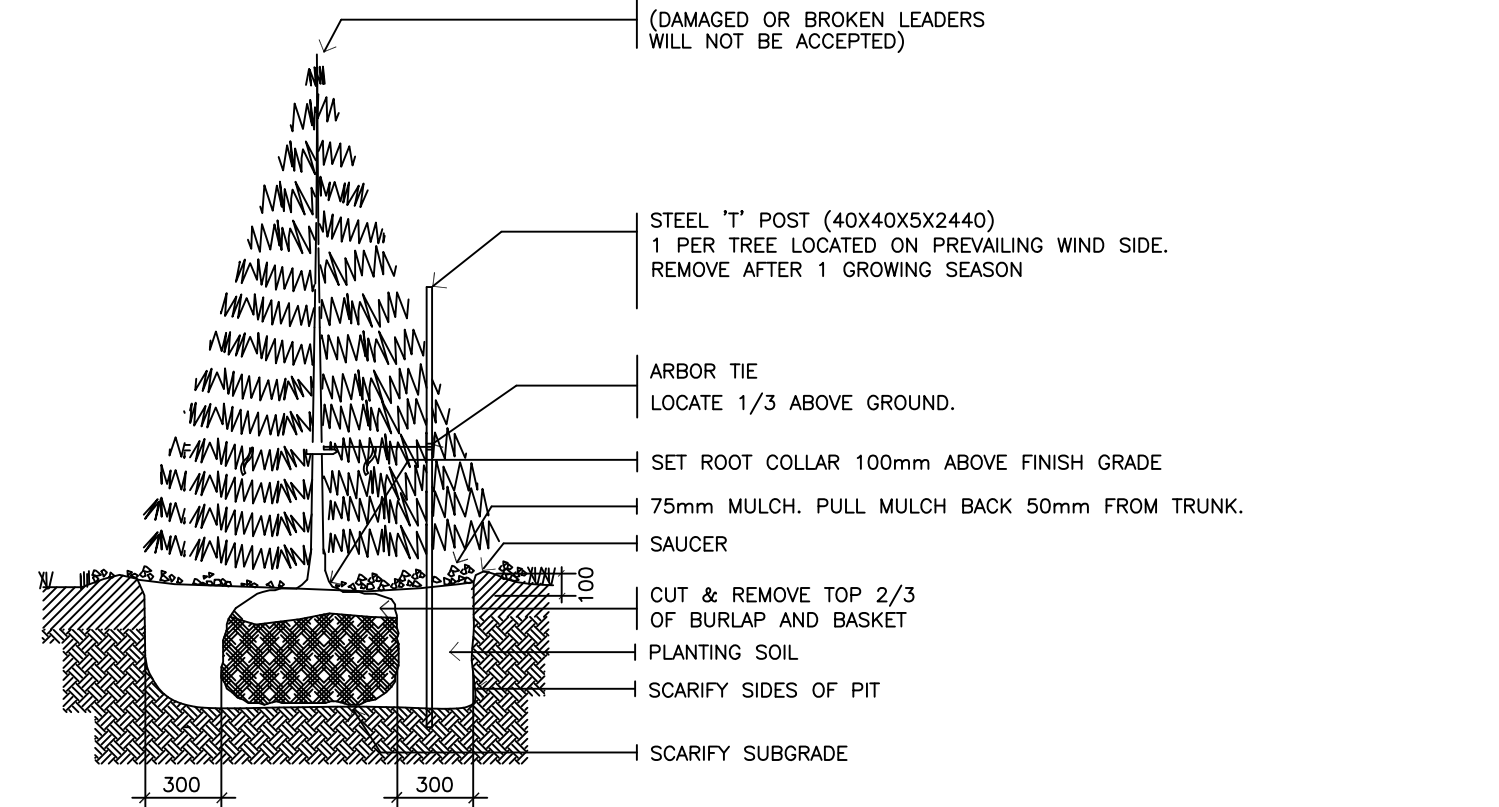


THIS DRAWING IS COLOUR DEPENDENT. NON-COLOUR COPIES MAY ALTER INTERPRETATION.

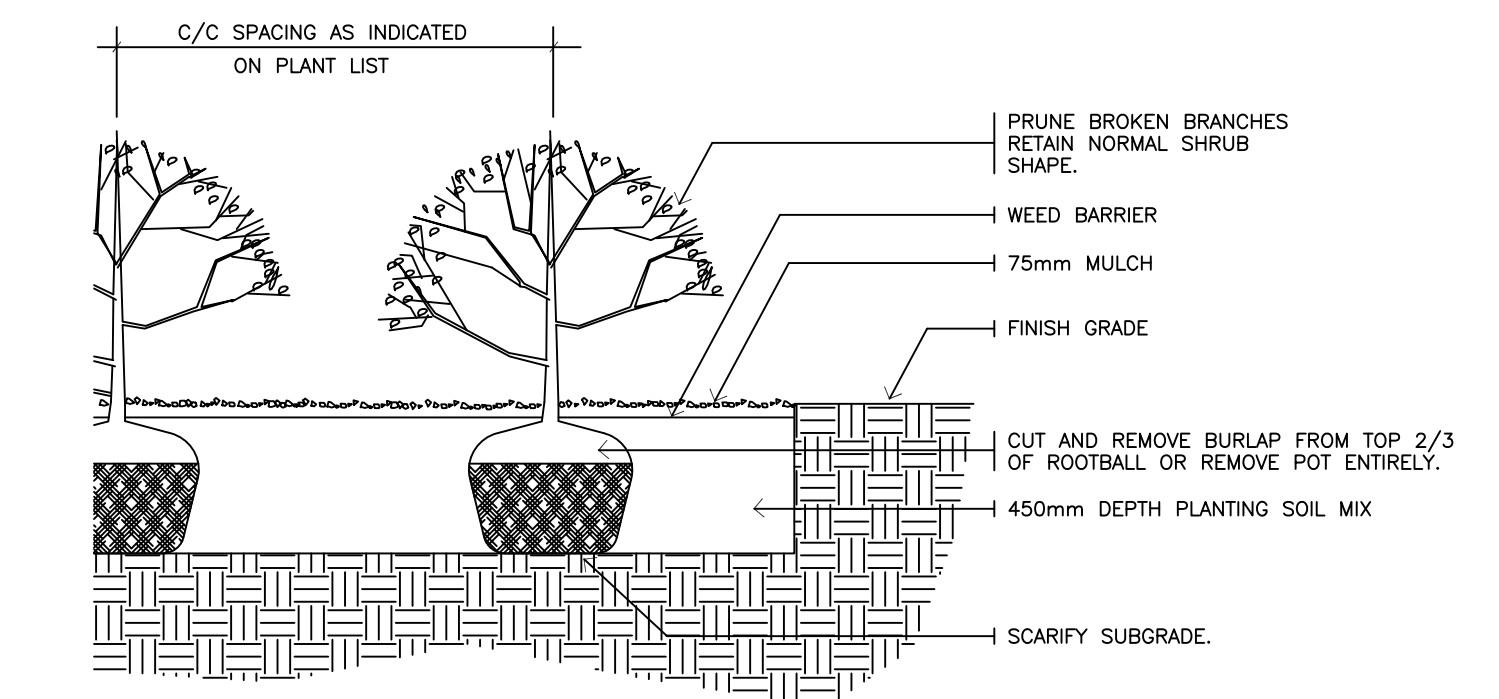
D07-12-24-0093



DECIDUOUS TREE PLANTING N.T.S.

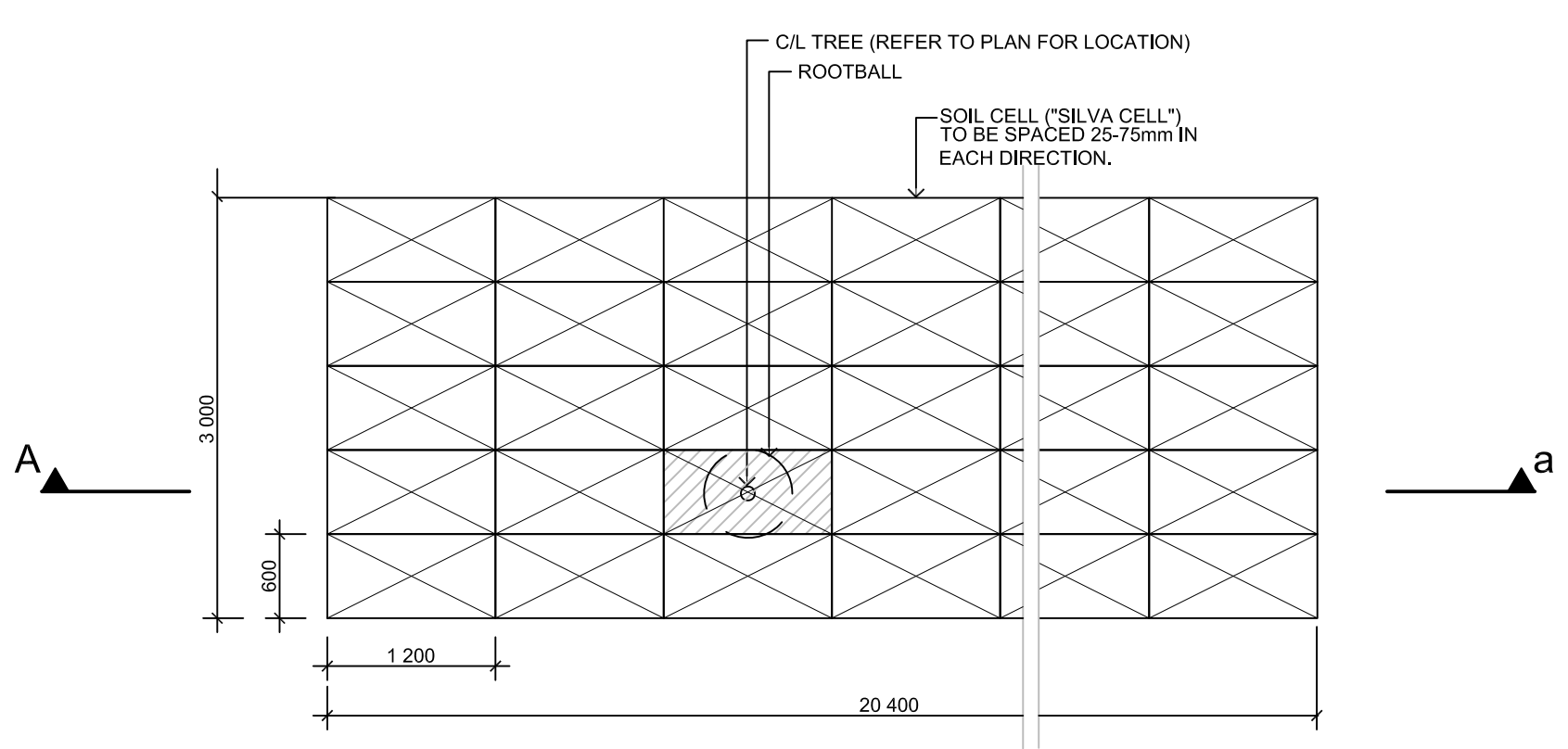
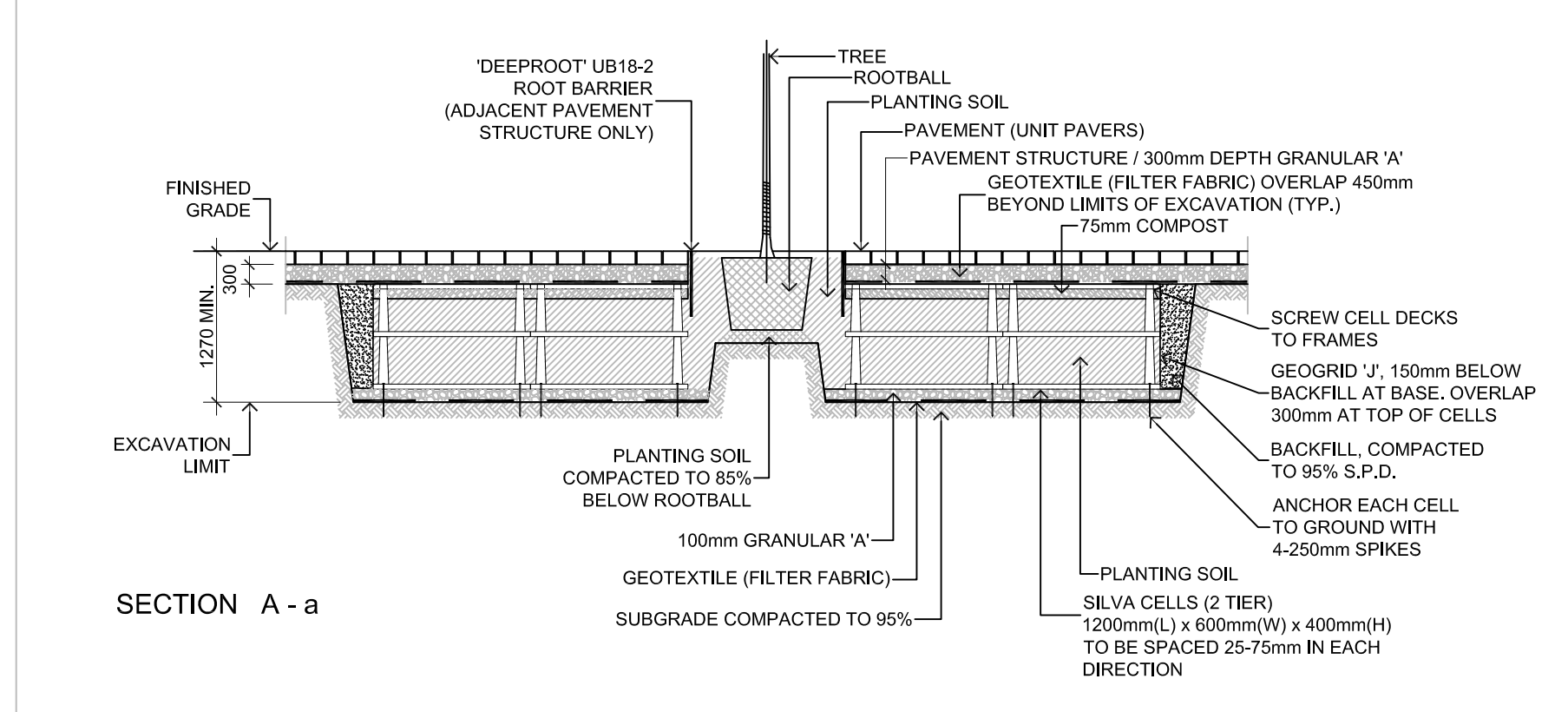


CONIFEROUS TREE PLANTING N.T.S.



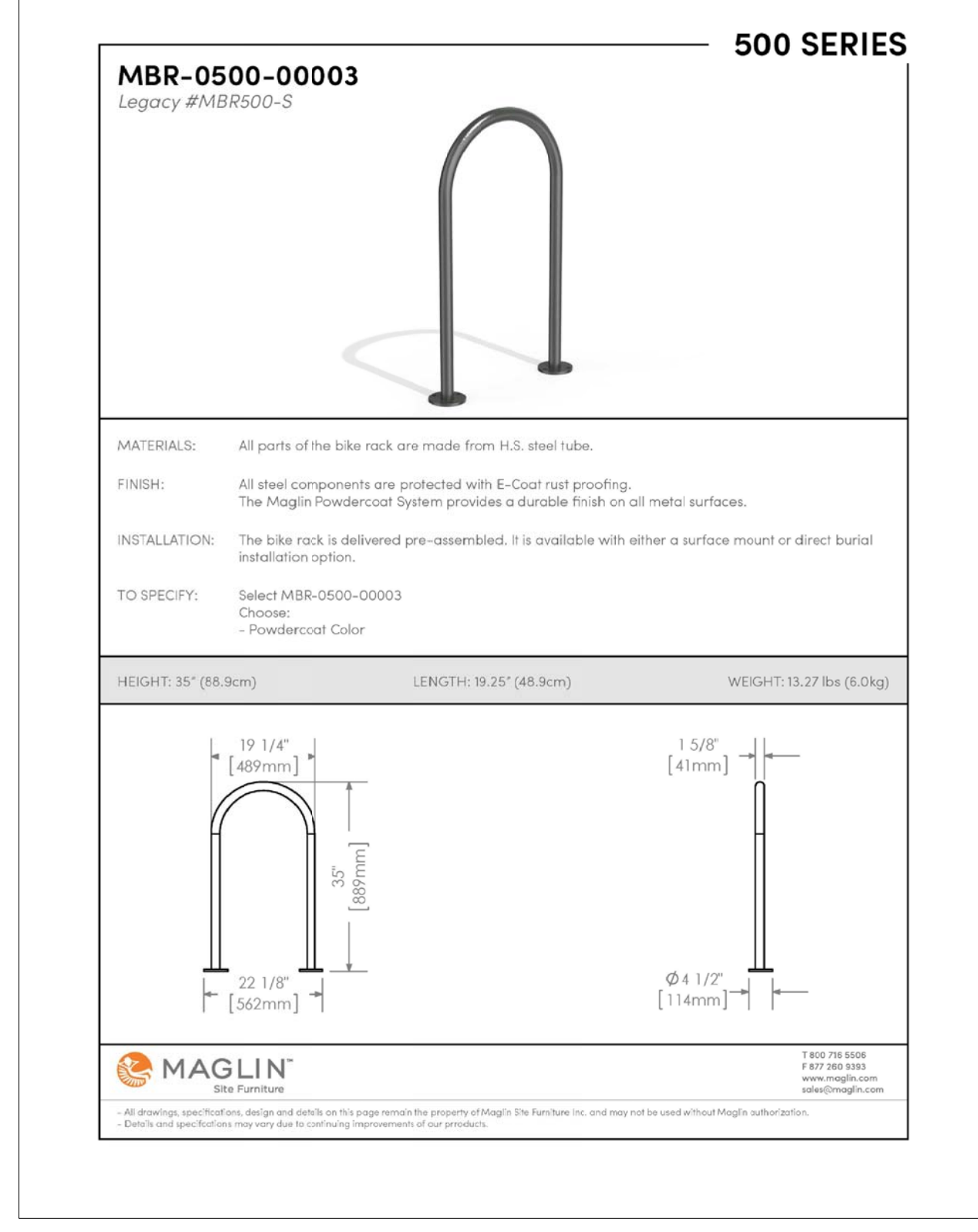
SHRUB / PERENNIAL / GRASSES PLANTING N.T.S.

1 L2.01 PLANTING DETAILS NTS

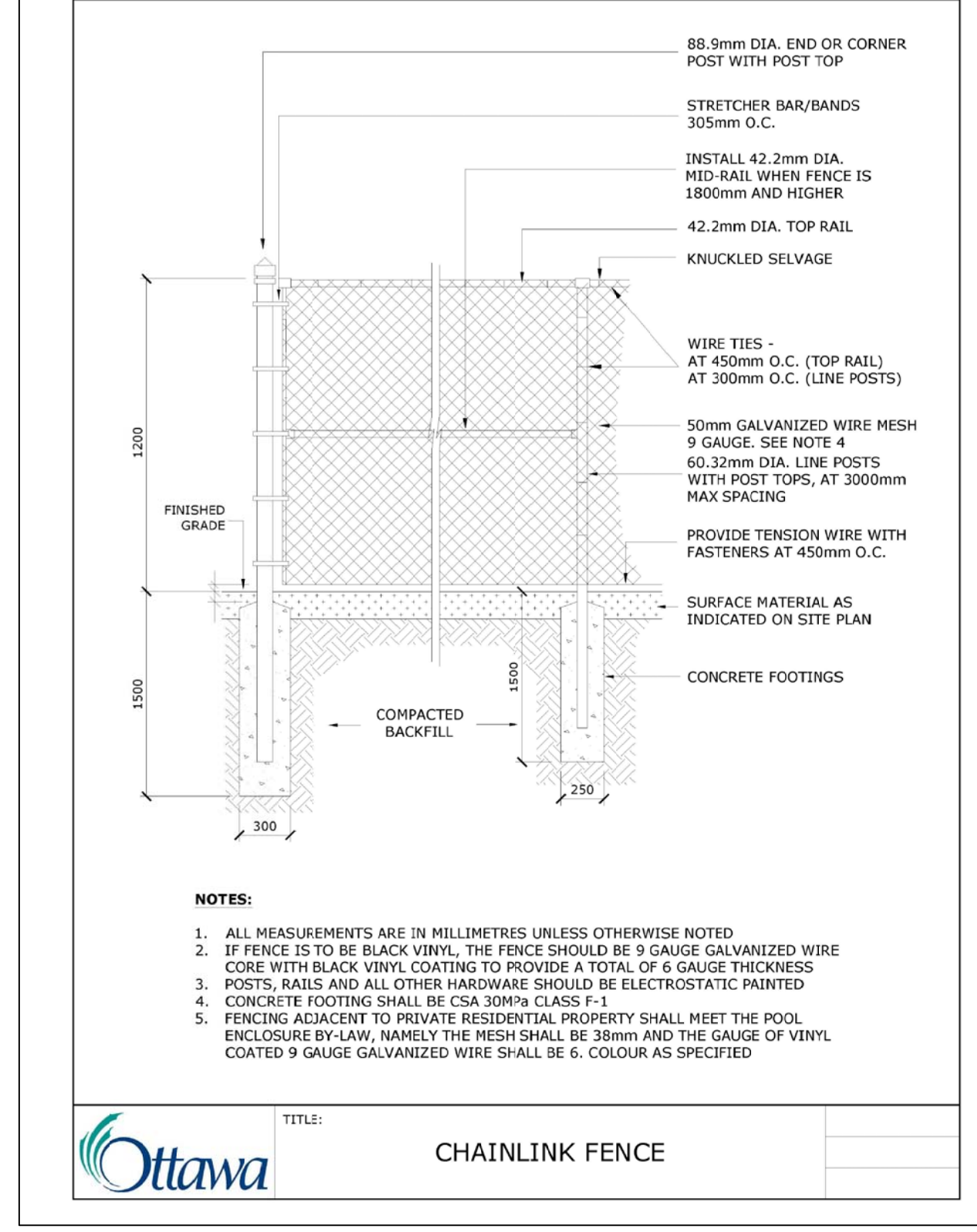


2 L2.01 SOIL CELLS (ILLUSTRATIVE CONCEPT ONLY - TREE LOCATION MAY VARY) NTS

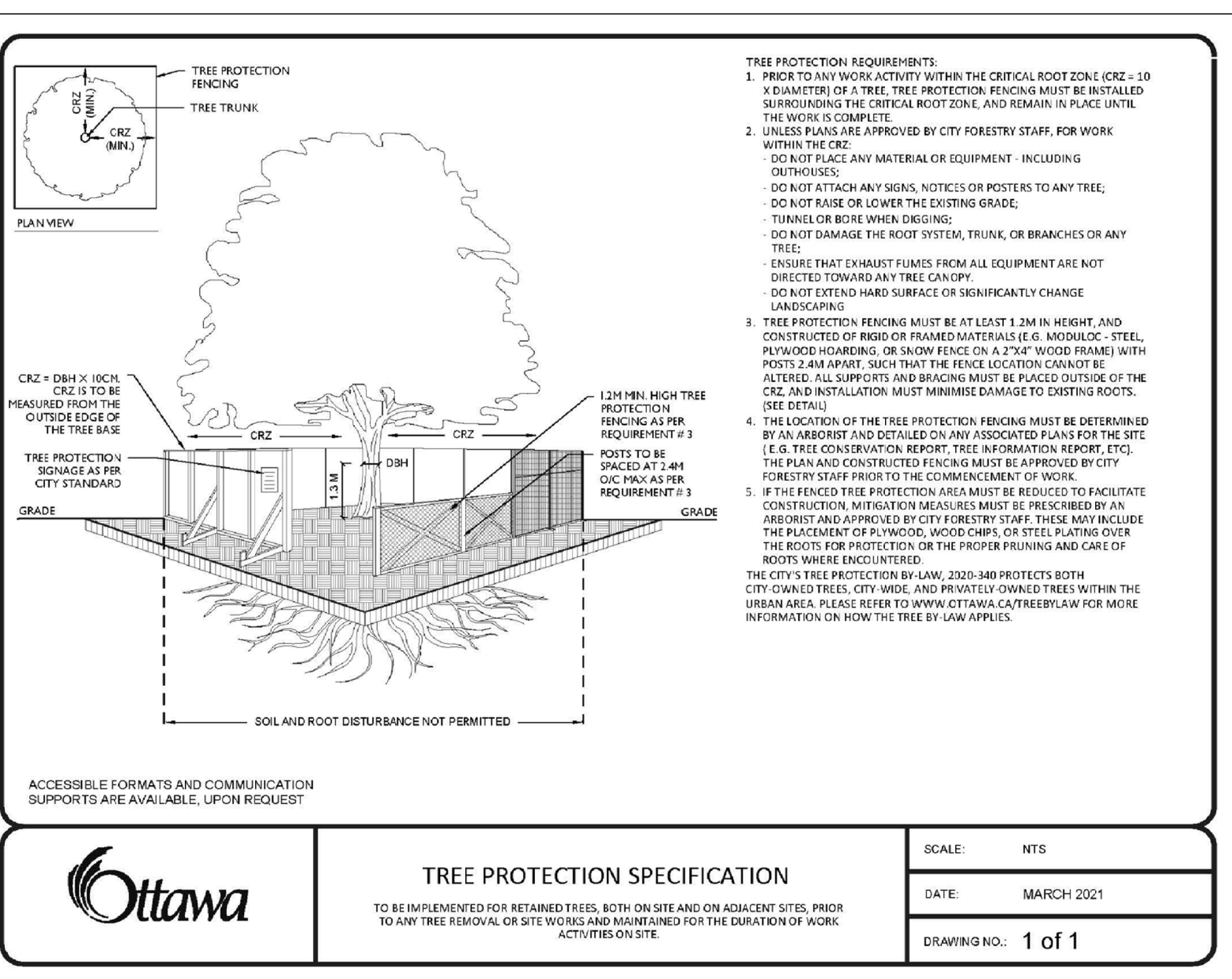
2 L2.01 SOIL CELLS (ILLUSTRATIVE CONCEPT ONLY - TREE LOCATION MAY VARY) NTS



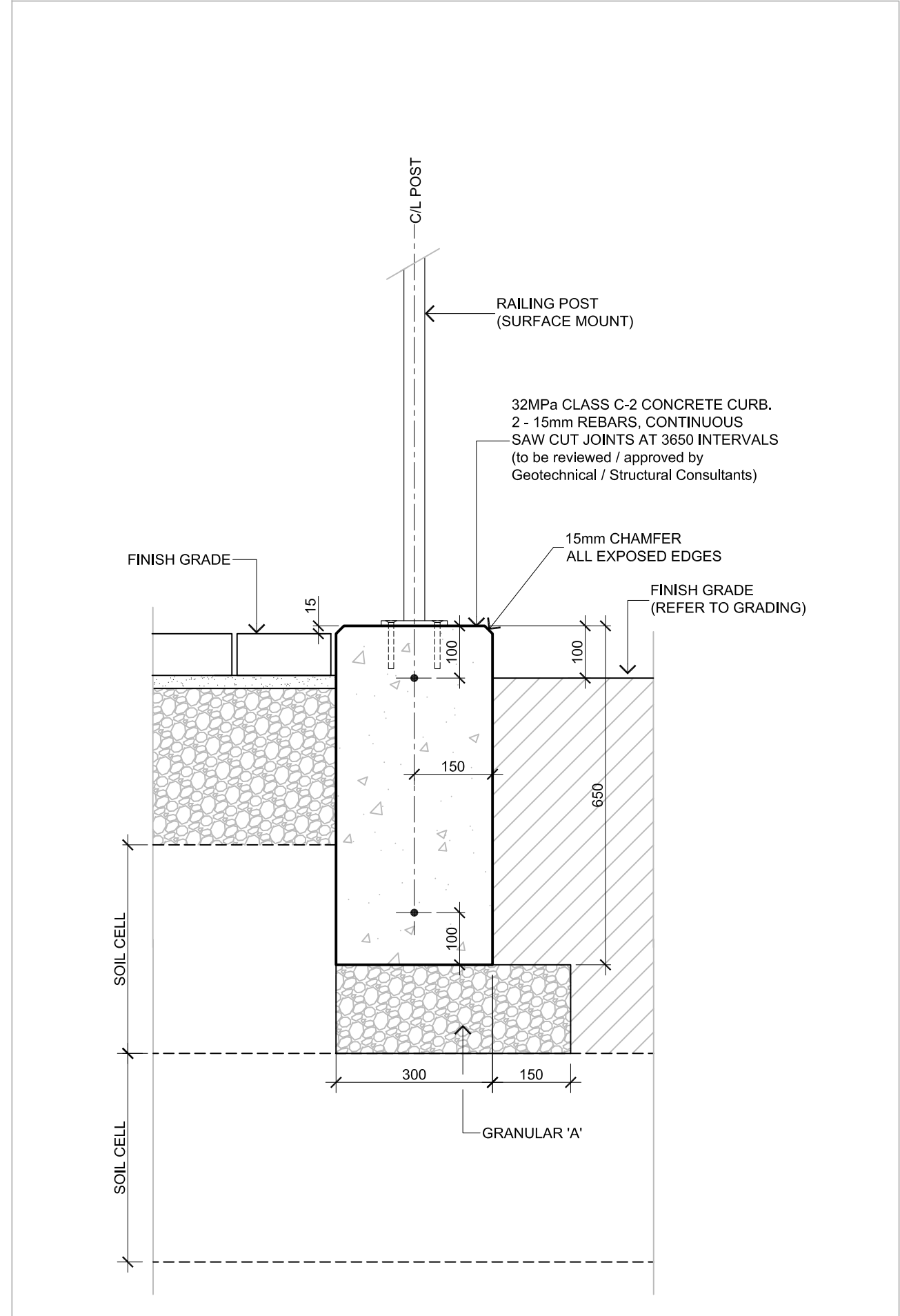
3 L2.01 BICYCLE RACK NTS



4 L2.01 BLACK VINYL CHAIN-LINK FENCE NTS



5 L2.01 TREE PROTECTION BARRIER NTS



6 L2.01 MODIFIED CONCRETE CURB N.T.S.

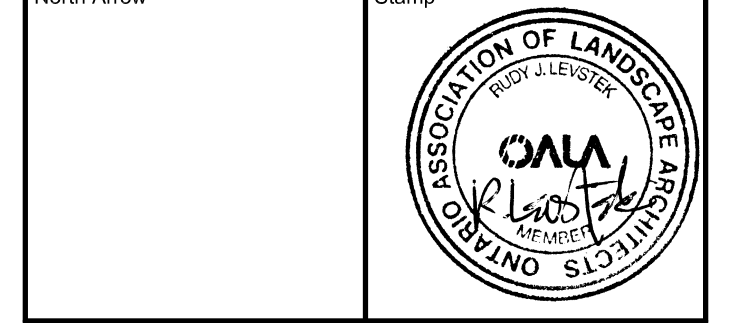


LOCATION PLAN



FOR APPROVAL ONLY

4.	NOV.11/24	PER CITY COMMENTS (3)
3.	JULY 11/24	PER CITY COMMENTS (2)
2.	MAY 3/24	PER CITY COMMENTS (1)
1.	FEB.9/24	ISSUE FOR SPA
no.	date	revision



Contractor shall check and verify all dimensions on site and report all errors and/or omissions to the Consultant, and by-laws.

Work to be done in accordance with all applicable codes and by-laws.

Do not scale Drawing.

This Drawing shall not be used for construction until signed by the Consultant.

Copyright reserved. This Drawing is the exclusive property of Levstek Consultants Inc. and shall not be used without consent.

Consultant

LEVSTEK CONSULTANTS
LANDSCAPE ARCHITECTS

2871 Hugh Creech - Ottawa - Ontario - K1A 3W6
613 - 826 - 8218

Project

1518-1524-1526
STITTSVILLE MAIN STREET
STITTSVILLE, ONTARIO

Drawing Title

LANDSCAPE DETAILS

Drawn MGB Project No. 1233 Drawing No. L2.01

Scale AS SHOWN

D07-12-24-0093