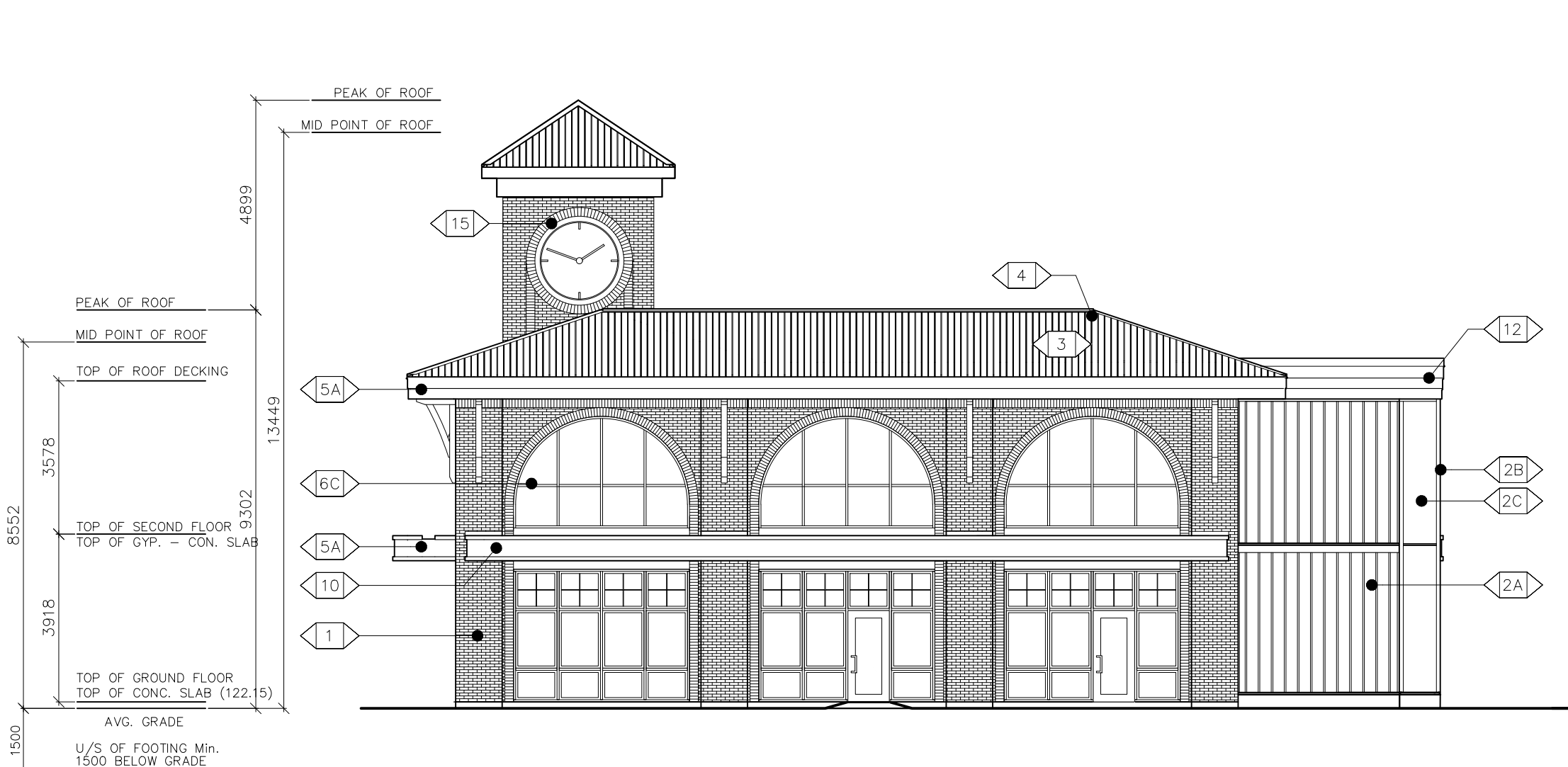


| #  | REVISION                 | DATE     |
|----|--------------------------|----------|
| 1  | ISSUED FOR REVIEW        | 01-02-24 |
| 2  | ISSUED FOR SITE PLAN     | 16-02-24 |
| 3  | ISSUED FOR CO-ORDINATION | 21-02-24 |
| 4  | ISSUED FOR CO-ORDINATION | 04-03-24 |
| 5  | ISSUED FOR CO-ORDINATION | 21-03-24 |
| 6  | ISSUED FOR CO-ORDINATION | 24-04-24 |
| 7  | ISSUED FOR SITE PLAN     | 24-05-03 |
| 8  | ISSUED FOR SITE PLAN     | 24-05-16 |
| 9  | ISSUED FOR SITE PLAN     | 24-08-02 |
| 10 |                          |          |

**LEGEND**

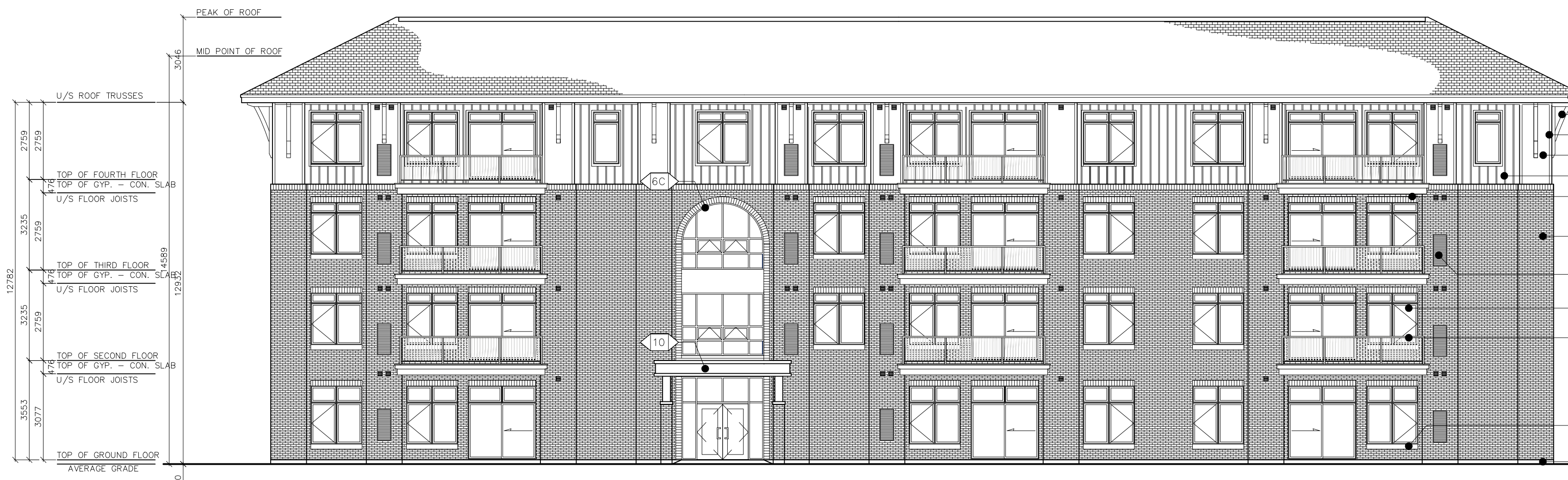
- (1) MASONRY VENEER
- (2A) HANSEN WILLIAMSBURG MK2 MAX SIZE OR APPROVED GIBBER CEMENT BOARD & BATTEN SIDING
- (2B) PREFINISHED FIBER CEMENT BOARD
- (2C) JAMES HARDIE OR APPROVED EQ. PREFINISHED FIBER CEMENT BOARD
- (3) JAMES HARDIE OR APPROVED EQ. PREFINISHED HERITAGE RIB METAL ROOFING 20" SPACING, MARITIME GREY BY IDEAL ROOFING CO.
- (4) PREFINISHED METAL RIDGE VENT
- (5A) PREFINISHED METAL FASCIA
- (6A) ALUMINUM CLAD WINDOW
- (6B) EXTRUDED VINYL WINDOW
- (6C) ALUMINUM CURTAIN WALL
- (7) CEMENTITIOUS PARGING ON CONCRETE FOUNDATION
- (8) MECHANICAL EQUIPMENT
- (9) ROOF BRACKET
- (10) ROOF CANOPY
- (11) PREFINISHED METAL RAILING
- (12) PVC PARAPET MOULDING (SMOOTH FINISH) AZEK OR APPROVED EQ.
- (13) TIE ROD
- (14) PRECAST SILL
- (15) MASONRY SOLDIER
- (16) METAL FLASHING



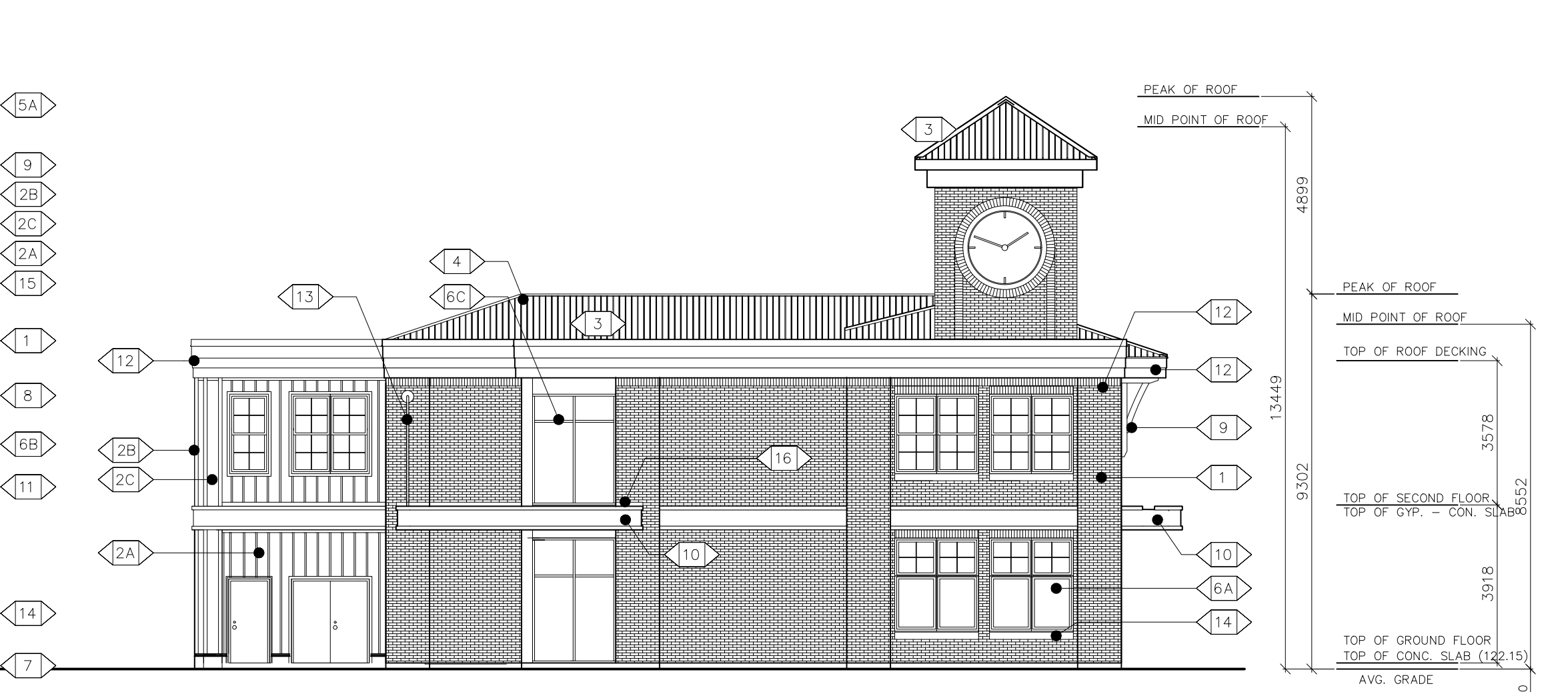
**1 NORTH ELEVATION**  
A200  
SCALE: 1:125



**4 WEST ELEVATION**  
A200  
SCALE: 1:125



**2 SOUTH ELEVATION: PARKING DRIVE AISLE**  
A200  
SCALE: 1:125



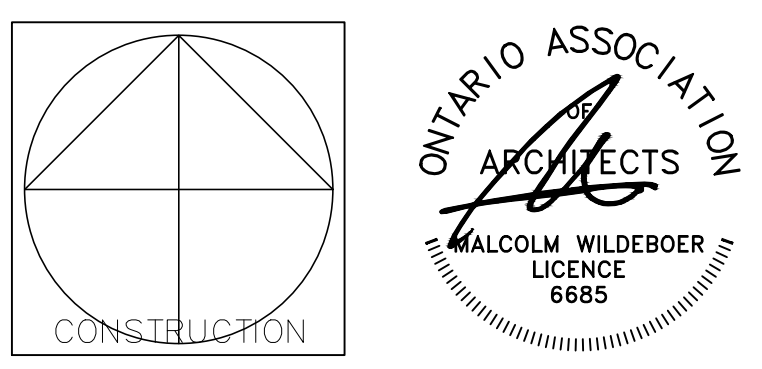
**3 EAST ELEVATION: STITTSVILLE MAIN STREET**  
A200  
SCALE: 1:125



**3 EAST ELEVATION: STITTSVILLE MAIN STREET**  
A200  
SCALE: 1:125



**4 WEST ELEVATION**  
A200  
SCALE: 1:125



PROJECT TITLE  
**STITTSVILLE STATION**  
1518-1524-1526 STITTSVILLE MAIN STREET

DRAWING TITLE  
**BUILDING ELEVATIONS**

DESIGNED BY: MALCOLM WILDEBOER  
DRAWN BY: JE  
START DATE: ---  
SCALE: AS SHOWN  
PROJECT NO. 2306

DRAWING NO. **A200**