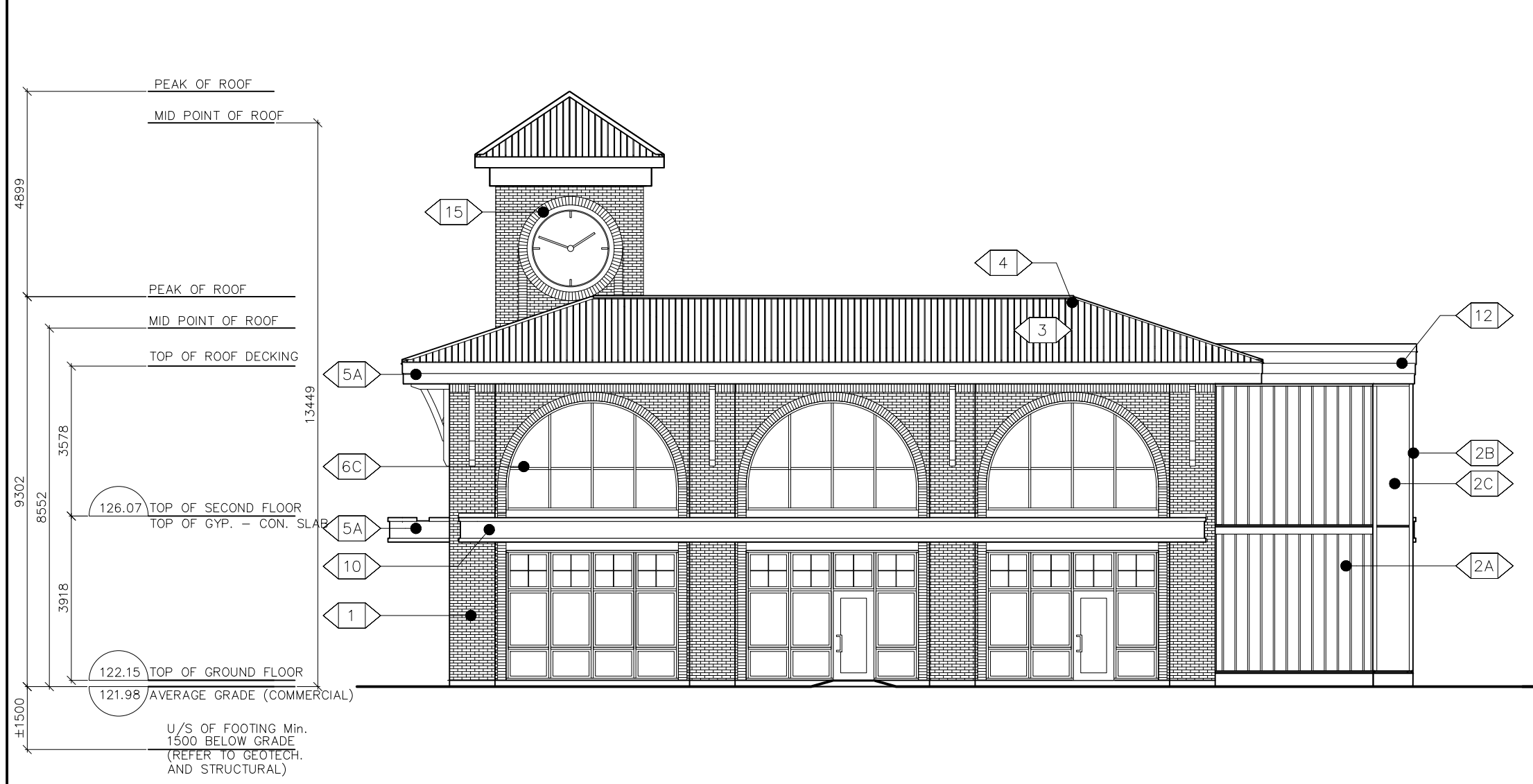


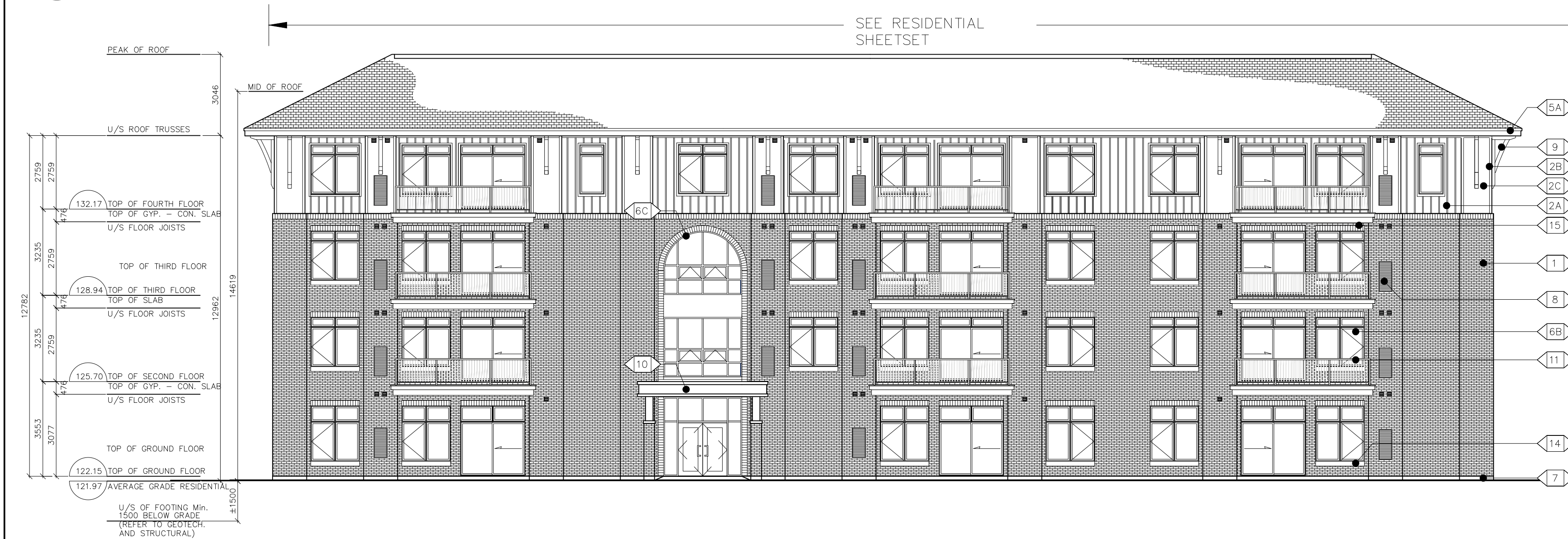
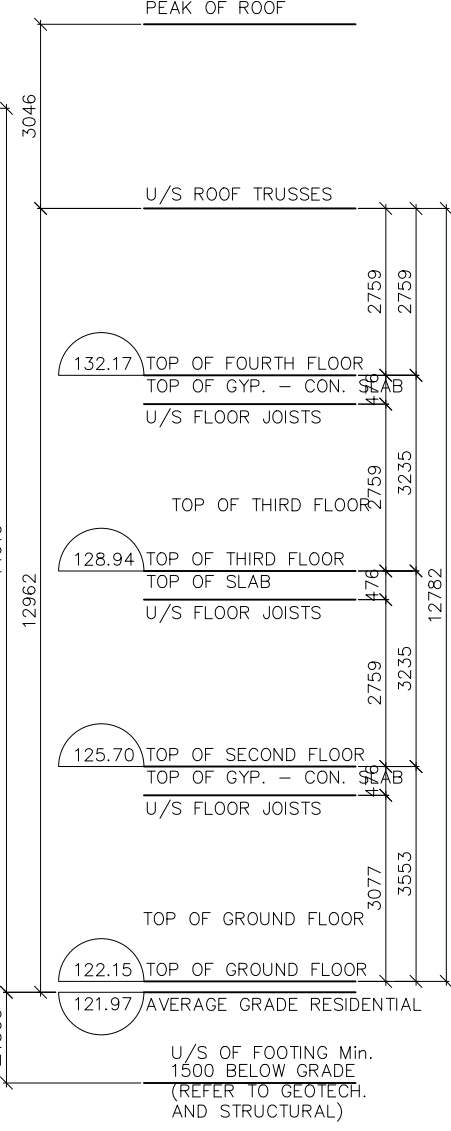
#	REVISION	DATE
1	ISSUED FOR REVIEW	01-02-24
2	ISSUED FOR SITE PLAN	16-02-24
3	ISSUED FOR CO-ORDINATION	21-02-24
4	ISSUED FOR CO-ORDINATION	04-03-24
5	ISSUED FOR CO-ORDINATION	21-03-24
6	ISSUED FOR CO-ORDINATION	24-04-24
7	ISSUED FOR SITE PLAN	24-05-03
8	ISSUED FOR SITE PLAN	24-05-16
9	ISSUED FOR SITE PLAN	24-08-02
10	ISSUED FOR SITE PLAN	24-11-15

**LEGEND**

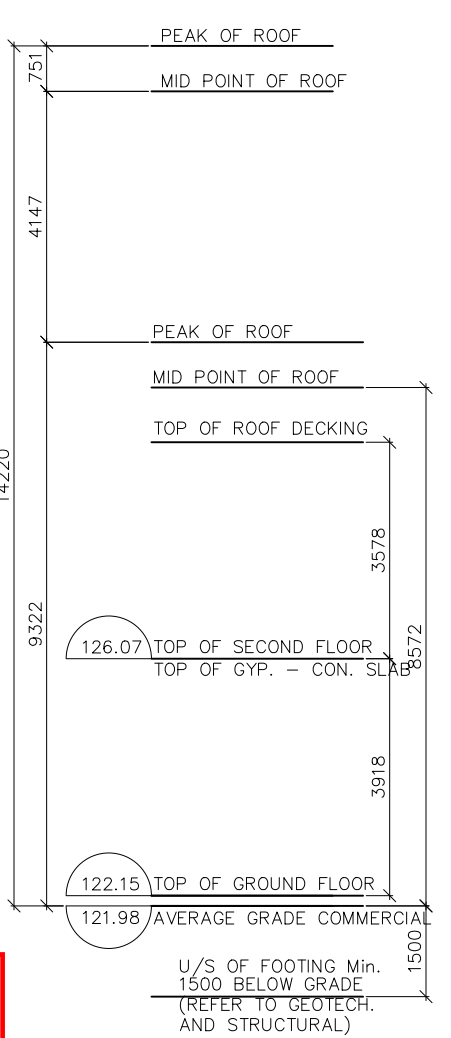
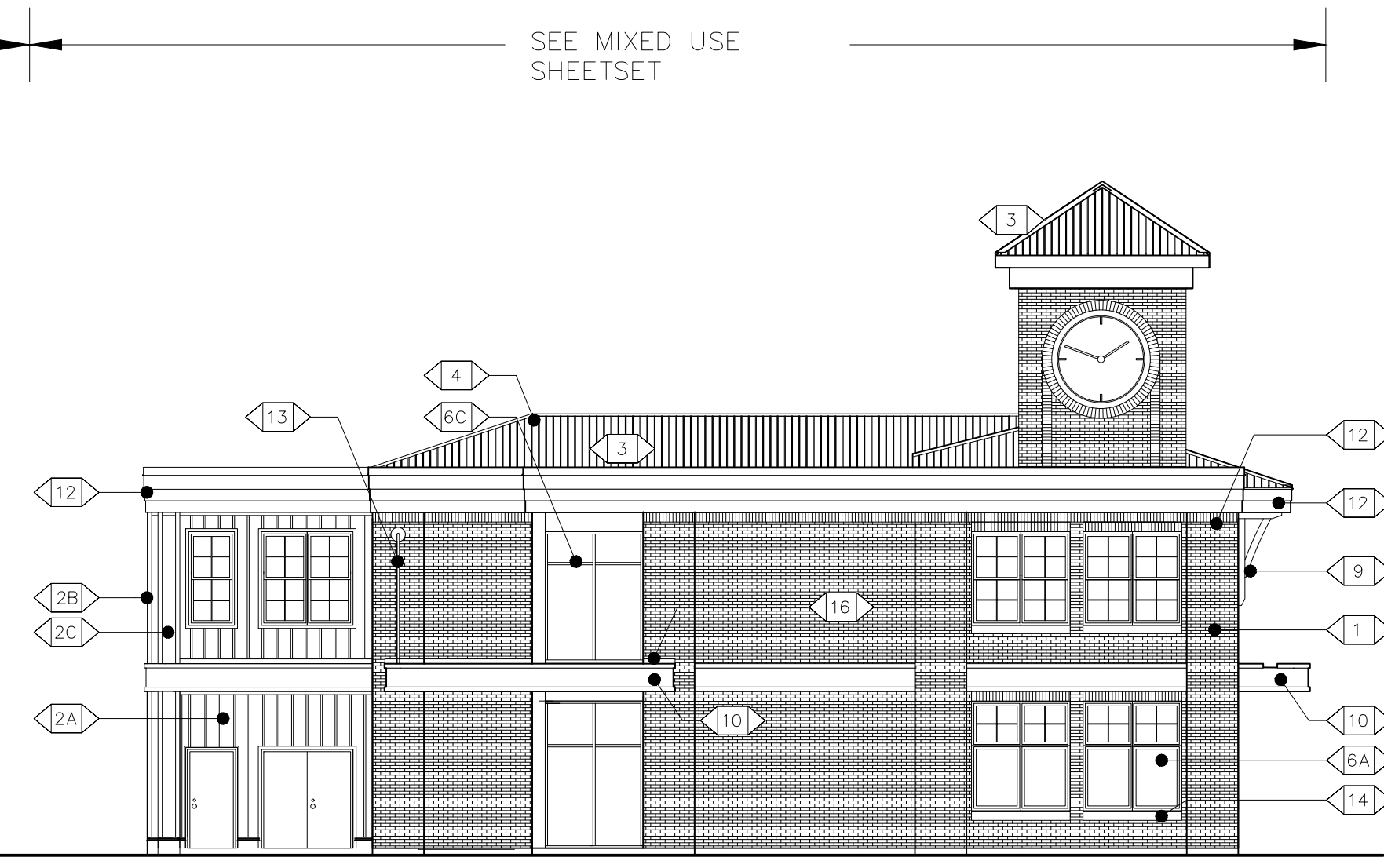
- 1 MASONRY VENEER
- 2 HANSEN WILLIAMSBURG MK2 MAX SIZE OR APPROVED EQ.
- 2A SIDING
- 2B PREFINISHED FIBER CEMENT BOARD & BATTEN
- 2C JAMES HARDIE OR APPROVED EQ.
- 3 PREFINISHED HERITAGE RIB METAL ROOFING
- 4 20" SPACING, MARITIME GREY BY IDEAL ROOFING CO.
- 5 PREFINISHED METAL RIDGE VENT
- 5A PREFINISHED METAL FASCIA
- 6A ALUMINUM CLAD WINDOW
- 6B EXTRUDED VINYL WINDOW
- 6C ALUMINUM CURTAIN WALL
- 7 CEMENTITIOUS PARGING ON CONCRETE FOUNDATION
- 8 MECHANICAL EQUIPMENT
- 9 ROOF BRACKET
- 10 ROOF CANOPY
- 11 PREFINISHED METAL RAILING
- 12 PVC PARAPET MOULDING (SMOOTH FINISH) AZEK OR APPROVED EQ.
- 13 TIE ROD
- 14 PRECAST SILL
- 15 MASONRY SOLDIER
- 16 METAL FLASHING



**1 NORTH ELEVATION**  
A200  
SCALE: 1:125

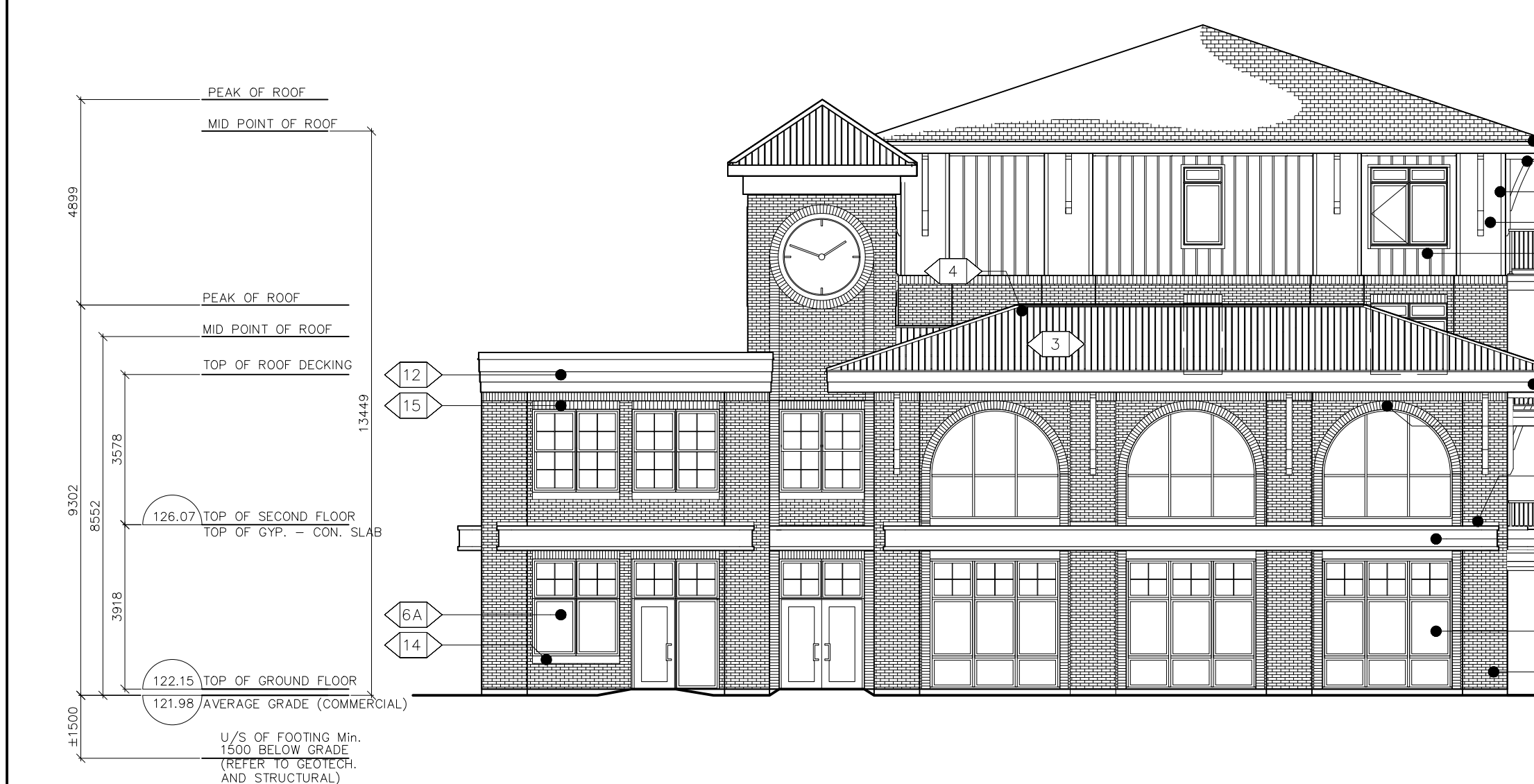


**2 SOUTH ELEVATION: PARKING DRIVE AISLE**  
A200  
SCALE: 1:125

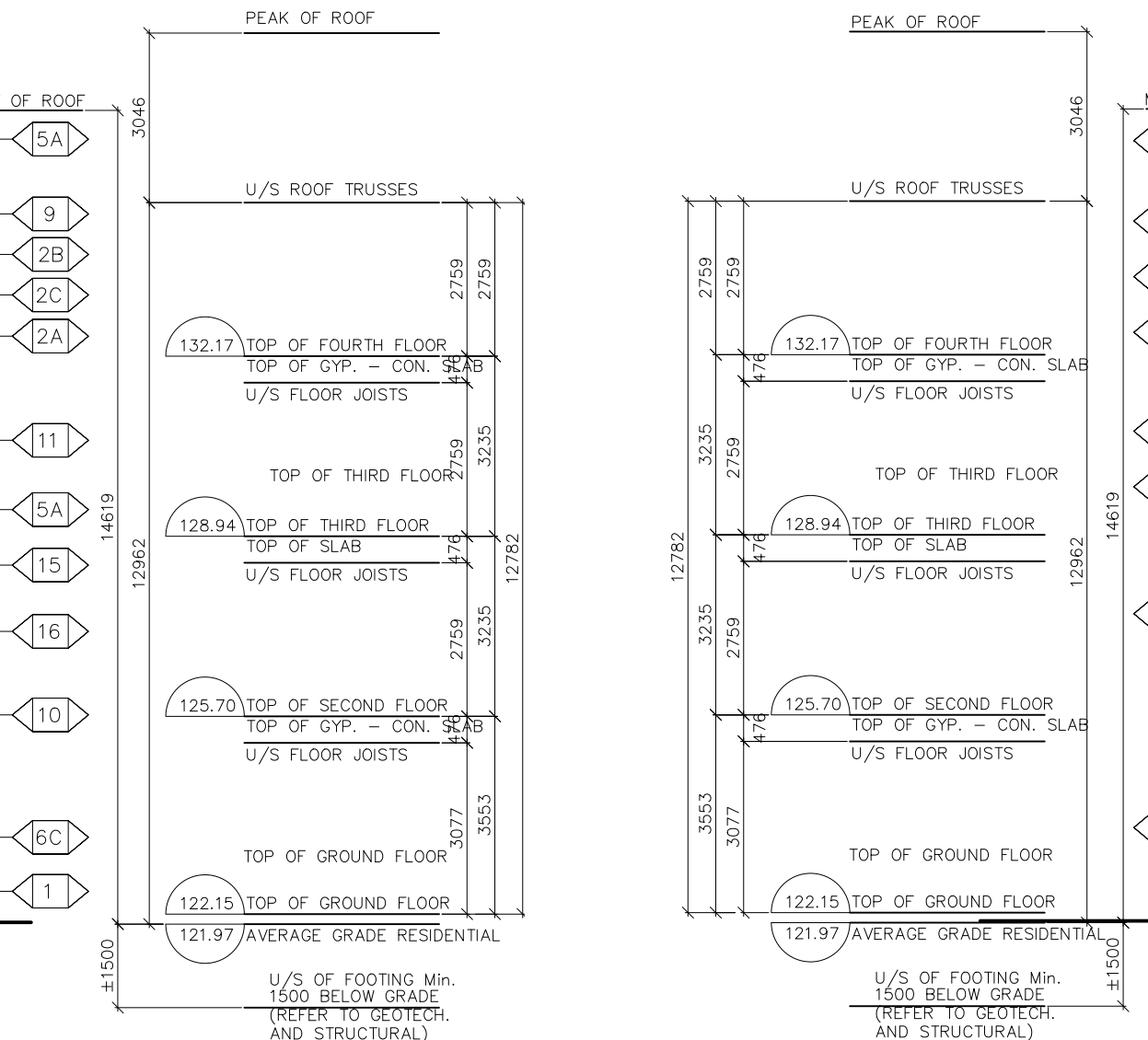


*Kersten Nitsche*  
**KERSTEN NITSCHKE, MCIP RPP**  
MANAGER (A), DEVELOPMENT REVIEW WEST  
PLANNING, DEVELOPMENT AND BUILDING SERVICES  
DEPARTMENT, CITY OF OTTAWA

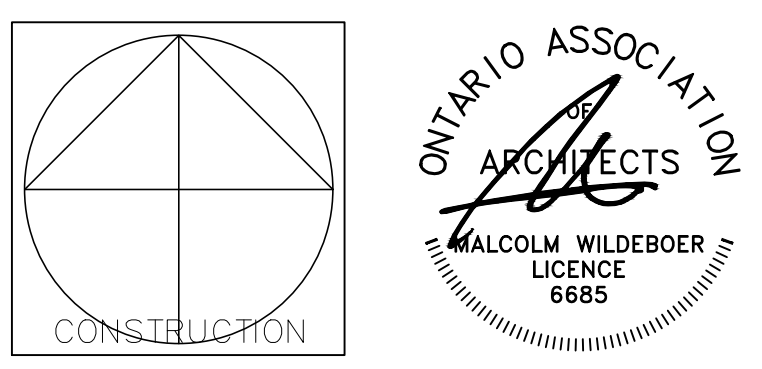
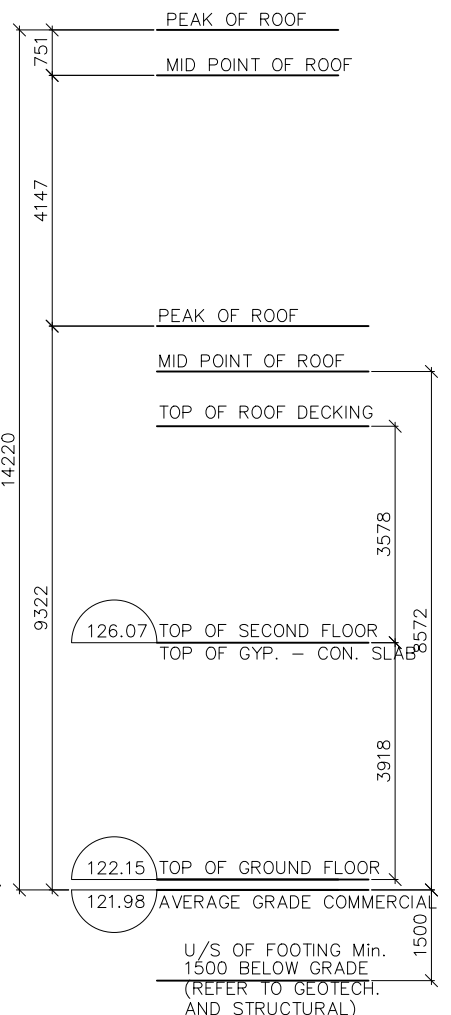
**APPROVED**  
By Kersten Nitsche at 2:15 pm, Jan 28, 2025



**3 EAST ELEVATION: STITTSVILLE MAIN STREET**  
A200  
SCALE: 1:125



**4 WEST ELEVATION**  
A200  
SCALE: 1:125



**Vandenberg & Wildeboer**  
ARCHITECTS

PROJECT TITLE  
**STITTSVILLE STATION**  
1518-1524-1526 STITTSVILLE MAIN STREET

DRAWING TITLE  
**BUILDING ELEVATIONS**

DESIGNED BY: MALCOLM WILDEBOER  
DRAWN BY: JE  
START DATE: -- --  
SCALE: AS SHOWN  
PROJECT NO. 2306

DRAWING NO. **A200**

D07-12-24-0093 PLAN #19180