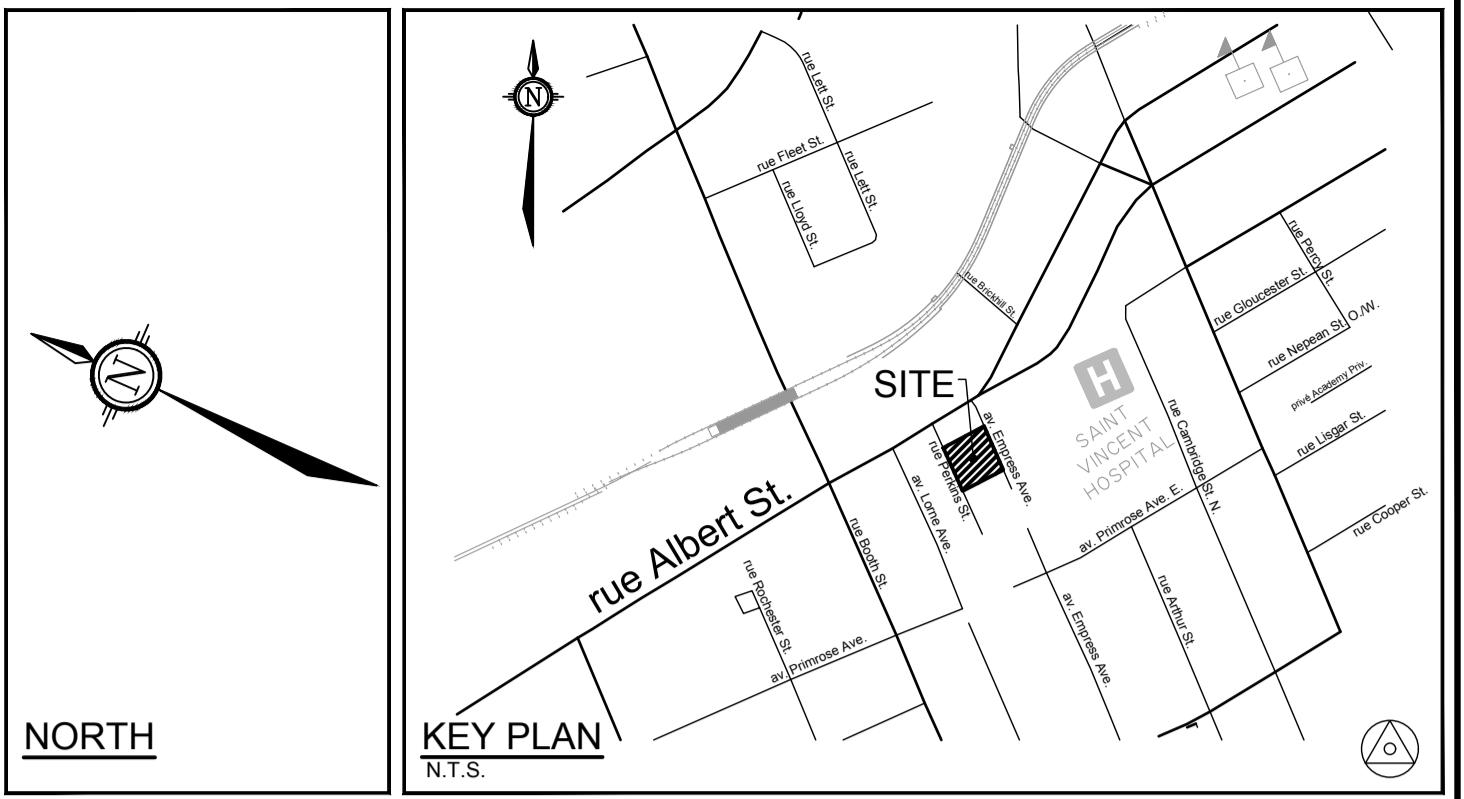


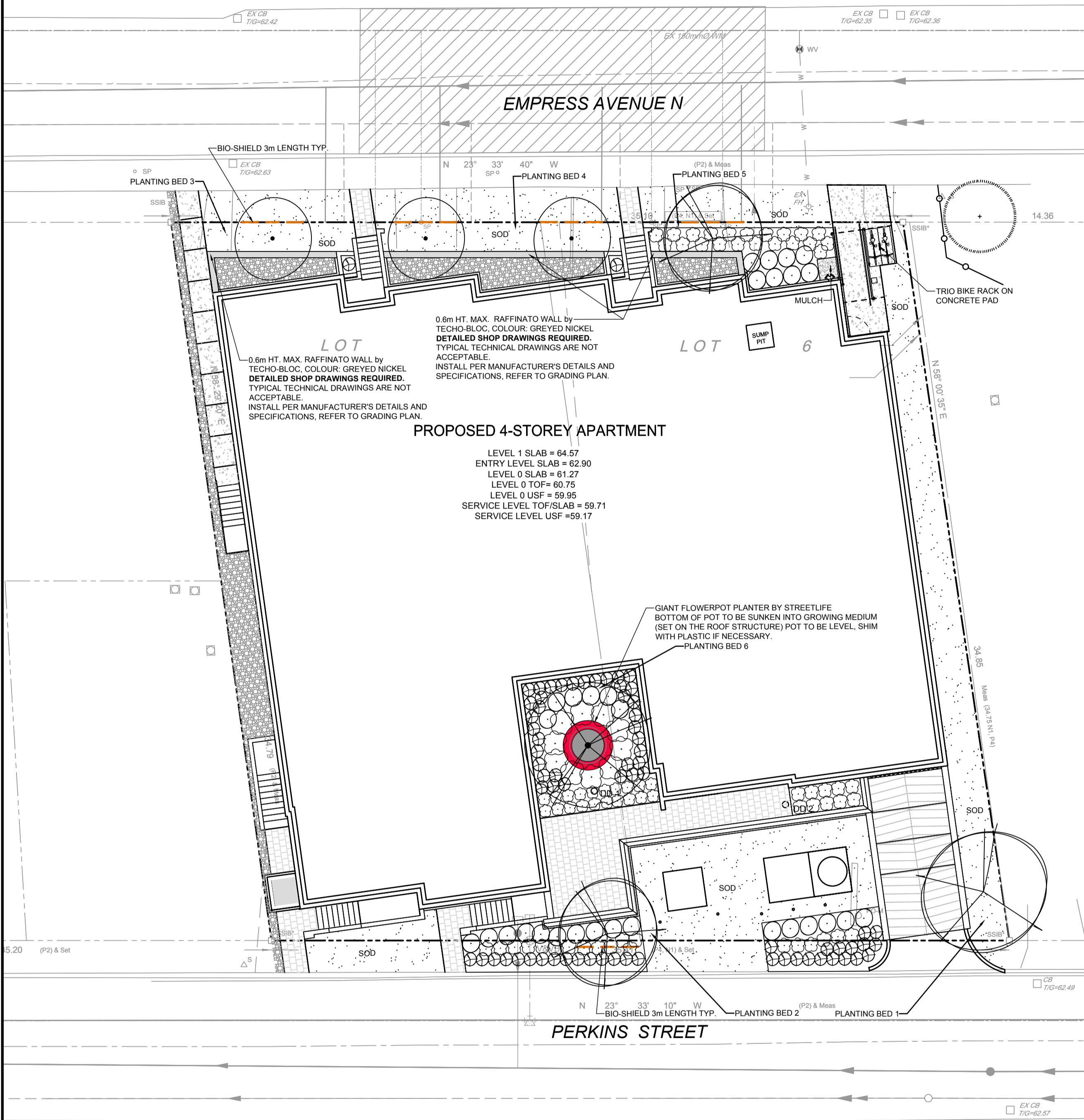
*Allison Hamlin*

**ALLISON HAMLIN**  
**MANAGER, DEVELOPMENT REVIEW ALL WARDS**  
**PLANNING, DEVELOPMENT & BUILDING SERVICES**  
**DEPARTMENT, CITY OF OTTAWA**

**APPROVED**  
 By Allison Hamlin at 4:40 pm, Dec 10, 2024



- LEGEND**
- PROPERTY LIMIT
  - EXISTING TREE TO REMAIN, SYMBOL SIZE REFLECTS CRZ
  - EXISTING TREE TO REMOVE, SYMBOL SIZE REFLECTS CRZ
  - TREE PROTECTION FENCE
- TREE PROTECTION**
- Implement the following protection measures for retained trees, both on site and on adjacent sites, prior to any work activity, including tree removal. Maintain tree protection fence in place and in good condition for the duration of site works:
- The Landscape Architect or Certified Arborist is to determine the location of the tree protection fencing and detail it on any associated plans for the site (e.g. tree conservation report, tree disclosure report, etc.).
  - Under the guidance of a Landscape Architect or Certified Arborist, erect a fence at the critical root zone (CRZ) of trees. Diameter at breast height (DBH) is the trunk diameter measured at 1.3m height on the tree trunk. The CRZ is calculated as DBH x 10. Refer to the Tree Protection Fence detail.
  - Refer to the Tree Protection Plan for fence location. City Forestry Staff are to approve both the plan and the installed fence prior to work commencement.
  - Do not place any material or equipment within 2m of the CRZ of any tree, including outhouses.
  - Do not disturb, raise, or lower the existing grade within the CRZ without approval.
  - Only tunnel or bore when digging within the CRZ of a tree. Hand work only where required within the CRZ; absolutely no machinery permitted.
  - Do not damage the root system, trunk, or branches, or any tree.
  - Do not extend hard surface or significantly change landscaping.
  - Ensure that exhaust fumes from all equipment are directed away from any tree canopy.
  - When trees marked for removal overlap with the CRZ of trees marked for preservation: cut roots at the edge of the CRZ and grind down stumps after tree removals, do not pull out stumps. Ensure there is not root pulling or disturbance of the ground within the CRZ.
  - Prior to work taking place, notify and consult the Landscape Architect and City Forestry Staff if roots must be cut. Roots 20mm or larger should be cut at right angles with clean, sharp horticultural tools without tearing, crushing, or pulling. Refer to City of Ottawa Specification S.P. F-8011 Tree Protection, Excavation of Root Zone.
  - If damaged or objectionable branches are observed, consult the Landscape Architect, before any work is conducted. Do not prune leaders. Do not prune more than 1/4 of crown.
  - Set up a water and fertilizing program, if trees are being affected by site works, to the satisfaction of the Landscape Architect.
  - The Landscape Architect is to prescribe mitigation measures if the protected fenced area must be reduced to facilitate construction. Measures may include the placement of plywood, wood chips, or steel plating over the roots for protection. City Forestry Staff are to approve said measures prior to fence movement.
  - City of Ottawa By-law: Protects municipal trees and municipal natural areas in the City of Ottawa and trees on private property in the urban area of the City of Ottawa (2020-340).
- OWNER**  
 2317916 ONT INC.  
 2081 MERIVALE ROAD  
 OTTAWA, ON, K2G 1G9
- ARCHITECT**  
 PROJECT 1 STUDIO  
 260 ST. PATRICK STREET, STE. 300  
 OTTAWA, ON, K1N 5K5
- PLANNER**  
 NOVATECH  
 240 MICHAEL COWPLAND DRIVE, STE. 200  
 OTTAWA, ON, K2M 1P6
- LANDSCAPE ARCHITECT**  
 NOVATECH  
 240 MICHAEL COWPLAND DRIVE, STE. 200  
 OTTAWA, ON, K2M 1P6
- CIVIL ENGINEER**  
 NOVATECH  
 240 MICHAEL COWPLAND DRIVE, STE. 200  
 OTTAWA, ON, K2M 1P6
- SURVEYOR**  
 FARLEY, SMITH & DENIS SURVEYING LTD.  
 30 COLONNADE ROAD, UNIT 275  
 OTTAWA, ON, K2E J76



**PLANTING BED SOIL VOLUMES:**

Planting Bed No.	Available Soil Area (sq m)	Available Soil Depth (m)	Available Soil Volume (cu m)	No. of Proposed Trees				Total No. of trees	Min. required Soil Volume total (cu m)
				Columnar 15m <sup>3</sup> or 9m <sup>3</sup>	Medium 25m <sup>3</sup> or 15m <sup>3</sup>	Large 30m <sup>3</sup> or 18m <sup>3</sup>	Conifer 25m <sup>3</sup> or 15m <sup>3</sup>		
Planting Bed 1	20.00	1.50	30.00	0	0	1	0	1	30m <sup>3</sup>
Planting Bed 2	61.00	1.50	91.50	0	1	0	0	1	25m <sup>3</sup>
Planting Bed 3	10.00	1.50	15.00	1	0	0	0	1	15m <sup>3</sup>
Planting Bed 4	16.25	1.50	24.38	2	0	0	0	2	18m <sup>3</sup>
Planting Bed 5	17.00	1.50	25.50	0	1	0	0	1	25m <sup>3</sup>
Planting Bed 6	36.20	0.30	10.86	0	0	0	0	0	

**PROPOSED TREE CANOPY COVER:**

**PROPOSED CANOPY COVERAGE AT MATURITY**

SIZE OF PROPOSED TREE	AVERAGE MATURE SPREAD	CANOPY COVERAGE PER TREE AT	QUANTITY OF TREES	TOTAL PROPOSED CANOPY COVERAGE AT MATURITY (m <sup>2</sup> )
Deciduous - Small (<6m Ht.)	5m	20	1	20
Deciduous - Medium (6m to 14m Ht.)	10m	79	5	395
Deciduous - Large (>14m Ht.)	15m	177	1	177
<b>TOTAL PROPOSED CANOPY COVERAGE (m<sup>2</sup>):</b>				<b>592</b>

1. Area of a circle = (r x r) x π  
 2. Canopy coverage per tree calculation: (average mature spread<sup>2</sup>) x (average mature spread<sup>2</sup>) x π  
 3. Canopy calculations do not include Tree 23 because it is on the neighbouring property.

**NOTE:**  
 THE POSITION OF ALL POLE LINES, CONDUITS, WATERMANS, SEWERS AND OTHER UNDERGROUND AND OVERGROUND UTILITIES AND STRUCTURES IS NOT NECESSARILY SHOWN ON THE CONTRACT DRAWINGS, AND WHERE SHOWN, THE ACCURACY OF THE POSITION OF SUCH UTILITIES AND STRUCTURES IS NOT GUARANTEED. BEFORE STARTING WORK, DETERMINE THE EXACT LOCATION OF ALL SUCH UTILITIES AND STRUCTURES AND ASSUME ALL LIABILITY FOR DAMAGE TO THEM.

No.	REVISION	DATE	BY
2.	RE-ISSUED FOR SPC	NOV. 28/24	RGJ
1.	ISSUED FOR SPC	AUG 8/24	RGJ

**SCALE**

1:150

**FOR REVIEW ONLY**

DESIGN	MEL
CHECKED	RGJ
DRAWN	MEL
CHECKED	RGJ
APPROVED	RGJ

**NOVATECH**  
 Engineers, Planners & Landscape Architects  
 Suite 200, 240 Michael Cowpland Drive  
 Ottawa, Ontario, Canada K2M 1P6

Telephone (613) 254-9643  
 Facsimile (613) 254-5867  
 Website www.novatech-eng.com

**LOCATION**  
 CITY OF OTTAWA  
 10 EMPRESS AVE

**LOT 5 AND PART OF LOT 6**  
 REGISTERED PLAN 7  
 CITY OF OTTAWA

**DRAWING NAME**  
 TREE CONSERVATION PLAN 2  
 PROPOSED DEVELOPMENT & TREE COVER

**PROJECT No.**  
 121234-00

**REV #**  
 REV # 2

**DRAWING No.**  
 121234-TCR2

M:\2021\121234\CAD\Landscaping\Plan\121234\_L.dwg, TCR2, Nov 28, 2024, 3:11pm, mmeist

D07-12-24-0095