



SITE PLAN
SCALE: 1:750

Symbol	Qty	Label	Arrangement	LF	Description	Watts	Lum. Lumens
○	75	WL-1-8L-4ME	SINGLE	0.900	CREE LIGHTING CAT. #XSPW-B-xx-4ME-8L-30K-UH	77	8475
○	12	WL-1-6L-4ME	SINGLE	0.900	CREE LIGHTING CAT. #XSPW-B-xx-4ME-6L-30K-UH	51	6100
○	5	WL-1-6L-2ME	SINGLE	0.900	CREE LIGHTING CAT. #XSPW-B-xx-2ME-6L-30K-UH	51	6100
○	2	WL-1-6L-3ME	SINGLE	0.900	CREE LIGHTING CAT. #XSPW-B-xx-3ME-6L-30K-UH	51	6100
○	1	ZL-1-6L-3M	SINGLE	0.900	CREE LIGHTING CAT. #OSQM-B-6L-30K7-3M-UH	48	6650
○	4	ZL-1-6L-3M-BLS	SINGLE	0.900	CREE LIGHTING CAT. #OSQM-B-6L-30K7-3M-UH	48	5250

Label	CalcType	Units	Avg	Max	Min	Avg/Min	Max/Min
spill	illuminance	Fc	0.02	0.5	0.0	N.A.	N.A.
within property lines	illuminance	Fc	1.49	4.0	0.0	N.A.	N.A.

LumNo	Label	X	Y	Z	Orient	Tilt
1	WL-1-6L-4ME	2911.503	853.456	24	270	0
2	WL-1-6L-4ME	2890.448	799.624	24	90	0
3	WL-1-8L-4ME	3094.922	738.194	24	0	0
4	WL-1-8L-4ME	3095.139	787.902	24	0	0
5	WL-1-8L-4ME	2890.697	723.446	24	270	0
6	WL-1-8L-4ME	2863.044	577.984	24	270	0
7	WL-1-8L-4ME	3144.532	597.111	24	270	0
8	WL-1-8L-4ME	3329.041	597.112	24	270	0
9	WL-1-8L-4ME	3171.233	853.055	24	270	0
10	WL-1-6L-2ME	3116.228	868.182	24	0	0
11	WL-1-6L-2ME	3116.228	917.638	24	0	0
12	WL-1-8L-4ME	3090.397	596.542	24	0	0
13	WL-1-8L-4ME	3090.397	645.442	24	3.654	0
14	WL-1-6L-2ME	3305.31	619.91	24	0	0
15	WL-1-6L-4ME	3530.109	620.541	24	0	0
16	WL-1-6L-4ME	3530.448	668.702	24	0	0
17	WL-1-6L-2ME	3305.136	668.879	24	0	0
18	WL-1-6L-2ME	3305.144	718.281	24	0	0
19	WL-1-6L-4ME	2960.553	853.456	24	270	0
20	WL-1-6L-4ME	3009.503	853.456	24	270	0
21	WL-1-6L-4ME	3058.503	853.456	24	270	0
22	WL-1-6L-4ME	3107.503	853.456	24	270	0
23	WL-1-6L-4ME	2939.448	799.624	24	90	0
24	WL-1-6L-4ME	2988.448	799.624	24	90	0
25	WL-1-6L-4ME	3037.448	799.624	24	90	0
26	WL-1-6L-4ME	3086.448	799.624	24	90	0
27	WL-1-8L-4ME	3220.233	853.055	24	270	0
28	WL-1-8L-4ME	3269.233	853.055	24	270	0
29	WL-1-8L-4ME	3318.233	853.055	24	270	0
30	WL-1-8L-4ME	2939.697	723.446	24	270	0
31	WL-1-8L-4ME	2988.697	723.446	24	270	0
32	WL-1-8L-4ME	3037.697	723.446	24	270	0
33	WL-1-8L-4ME	3086.697	723.446	24	270	0
34	WL-1-8L-4ME	2873.009	668.863	24	90	0
35	WL-1-8L-4ME	2922.009	668.863	24	90	0
36	WL-1-8L-4ME	2971.009	668.863	24	90	0
37	WL-1-8L-4ME	3020.009	668.863	24	90	0
38	WL-1-8L-4ME	3069.009	668.863	24	90	0
39	WL-1-8L-4ME	2912.044	577.984	24	270	0
40	WL-1-8L-4ME	2961.044	577.984	24	270	0
41	WL-1-8L-4ME	3009.905	577.707	24	270	0
42	WL-1-8L-4ME	3058.905	577.707	24	270	0
43	WL-1-8L-4ME	3193.553	597.111	24	270	0
44	WL-1-8L-4ME	3242.553	597.111	24	270	0
45	WL-1-8L-4ME	3291.553	597.111	24	270	0
46	WL-1-8L-4ME	3378.041	597.112	24	270	0
47	WL-1-8L-4ME	3427.041	597.112	24	270	0
48	WL-1-8L-4ME	3476.041	597.112	24	270	0
49	WL-1-8L-4ME	3525.041	597.112	24	270	0
50	WL-1-8L-4ME	3144.532	748.331	24	90	0
51	WL-1-8L-4ME	3328.906	747.776	24	90	0
52	WL-1-8L-4ME	3377.906	747.776	24	90	0
53	WL-1-8L-4ME	3426.906	747.776	24	90	0
54	WL-1-8L-4ME	3193.557	748.331	24	90	0
55	WL-1-8L-4ME	3242.557	748.331	24	90	0
56	WL-1-8L-4ME	3291.557	748.331	24	90	0
57	WL-1-8L-4ME	2911.796	929.18	24	90	0
58	WL-1-8L-4ME	3171.499	928.852	24	90	0
59	WL-1-8L-4ME	3220.499	928.852	24	90	0
60	WL-1-8L-4ME	3269.499	928.852	24	90	0
61	WL-1-8L-4ME	2960.796	929.18	24	90	0
62	WL-1-8L-4ME	3009.796	929.18	24	90	0
63	WL-1-8L-4ME	3058.796	929.18	24	90	0
64	WL-1-8L-4ME	3107.796	929.18	24	90	0
65	WL-1-8L-4ME	3301.617	910.044	24	90	0
66	WL-1-8L-4ME	3322.955	891.596	24	90	0
67	WL-1-8L-4ME	3340.514	871.925	24	0	0
68	WL-1-8L-4ME	3450.527	722.418	24	0	0
69	WL-1-8L-4ME	3489.869	697.998	24	90	0
70	WL-1-8L-4ME	3519.716	673.036	24	90	0
71	WL-1-8L-4ME	2958.237	1046.411	24	248.553	0
72	WL-1-8L-4ME	3004.254	1029.22	24	249.593	0
73	WL-1-8L-4ME	3050.619	1011.855	24	249.673	0
74	WL-1-8L-4ME	3096.463	994.663	24	248.553	0
75	WL-1-8L-4ME	3137.445	1017.237	24	250.558	0
76	WL-1-8L-4ME	3183.636	1000.046	24	246.372	0
77	WL-1-8L-4ME	3203.432	1016.89	24	338.194	0
78	WL-1-8L-4ME	3204.821	1035.992	24	68.628	0
79	WL-1-8L-4ME	3158.456	1053.183	24	67.67	0
80	WL-1-8L-4ME	3112.266	1070.374	24	69.716	0
81	WL-1-8L-4ME	3066.248	1087.565	24	70.867	0
82	WL-1-8L-4ME	3019.881	1104.583	24	68.802	0
83	WL-1-8L-4ME	2974.039	1121.601	24	68.189	0
84	WL-1-8L-4ME	3427.643	1020.06	24	131.3	0
85	WL-1-8L-4ME	3389.955	988.399	24	131.284	0
86	WL-1-8L-4ME	3394.025	959.367	24	218.158	0
87	WL-1-8L-4ME	3426.311	921.652	24	220.603	0
88	WL-1-8L-4ME	3458.058	883.938	24	221.425	0
89	WL-1-8L-4ME	3489.532	846.223	24	219.093	0
90	WL-1-8L-4ME	3521.278	808.508	24	217.875	0
91	WL-1-8L-4ME	3553.295	770.521	24	219.172	0
92	WL-1-8L-4ME	3605.933	775.677	24	314.371	0
93	WL-1-6L-3ME	3498.986	973.045	24	38.823	0
94	ZL-1-6L-3M-BLS	3519.238	512.891	20.5	1.364	0
95	ZL-1-6L-3M-BLS	3514.529	434.46	20.5	1.364	0
96	ZL-1-6L-3M-BLS	3511.879	354.969	20.5	1.364	0
97	ZL-1-6L-3M-BLS	3508.7	276.538	20.5	1.364	0
98	WL-1-6L-3ME	3457.31	1023.62	24	38.823	0
99	ZL-1-6L-3M	3353.461	1041.996	20.5	309.055	0

REVISIONS	
#	DATE
1. ISSUED FOR S.P.A.	AUG.17/23
2. RE-ISSUED FOR S.P.A.	NOV.15/23



GENERAL NOTES:
ALL DRAWINGS & SPECIFICATIONS ARE THE PROPERTY OF THE ENGINEER AND CANNOT BE USED OR REPRODUCED WITHOUT HIS APPROVAL.
THE CONTRACTOR SHALL CHECK AND VERIFY ALL DIMENSIONS ON THE SITE AND REPORT ANY DISCREPANCY TO THE ENGINEER.
DO NOT SCALE THE DRAWING.
THE CONTRACTOR WORKING FROM DRAWINGS NOT SPECIFICALLY MARKED "FOR CONSTRUCTION" MUST ASSUME FULL RESPONSIBILITY AND BEAR COSTS FOR ANY CORRECTIONS OR DAMAGES RESULTING FROM THIS WORK.



PROJECT
INDUSTRIAL DEVELOPMENT
1319 Johnston Road
Ottawa, ON

DRAWING
ELECTRICAL
SITE PLAN

DATE	JUL 2023	PROJECT NO	2023-105
DRAWN	D.P.	DRAWING NO	LE-1
CHECKED	J.P.		
SCALE	1:750		

OSQ Series

OSQ™ LED Area/Flood Luminaire featuring Cree TrueWhite® Technology – Medium & Large

Rev. Date: V6 05/31/2022

Product Description

The OSQ™ Area/Flood luminaire blends extreme optical control, advanced thermal management and modern, clean aesthetics. Built to last, the housing is rugged cast aluminum with an integral, weatherright LED driver compartment. Versatile mounting configurations offer simple installation. Its slim, low-profile design minimizes wind load requirements and blends seamlessly into the site providing even, quality illumination. The 4L lumen package is a suitable upgrade for HID applications up to 250 Watt, and the 1L lumen package is a suitable upgrade for HID applications up to 400 Watt. The 2L lumen package is a suitable upgrade for HID applications up to 750 Watts, and the 3L lumen package is a suitable upgrade for HID applications up to 1000 Watts.

Applications: Parking lots, walkways, campuses, car dealerships, office complexes, tunnels, underpasses, and internal roadways.

Performance Summary

Utilizes Cree TrueWhite® Technology on 5000K Luminaires

NanoOptic® Precision Delivery Grid™ optic

Assembled in the USA by Cree Lighting from US and imported parts

Initial Delivered Lumens: 4,000 - 30,000

Efficacy Up to 173 LPW

CRI: Minimum 70 CRI (5000K, 4000K & 5700K); 90 CRI (5000K)

CCT: 3000K, 4000K, 5000K, 5700K

Limited Warranty: 10 years on luminaire; 10 years on Colorfast DeltaGuard® finish; up to 5 years for Synapse® accessories; 1 year on luminaire accessories

*See <http://www.cree.com/usa/products> for warranty terms. For Synapse accessories, consult Synapse spec sheets for details on warranty terms.

Ordering Information

Fully assembled luminaire is composed of two components that must be ordered separately:

Example Mount: OSQ-ML-B-AA-BK + Luminaire: OSQ-M-4L-30K7-2M-UL-NM-BK

Mount Luminaire must be ordered separately**

OSQ-	Color Options:	SV Silver	BZ Bronze
OSQ-ML-B-AA Adjustable Arm	BK Black	WW White	
OSQ-ML-B-DA Direct Arm			
OSQ-ML-B-TM Translucent Mount			

*Reference ENE and ENL wall-mount luminaire data beginning on page 13

Family	Size	Series	Lumen Package	Optic	Mount	Color Options	Controls**	Options	
OSQ	M	M1000	3000K	2M	UL	BK	PHL Programmable Multi-Level, up to 10-10	250V/100A Surge Suppression	
			5000K	2M	UL	BK	PHL Programmable Multi-Level, up to 10-10	250V/100A Surge Suppression	
		L	M1000	3000K	3M	UL	BK	PHL Programmable Multi-Level, up to 10-10	250V/100A Surge Suppression
				5000K	3M	UL	BK	PHL Programmable Multi-Level, up to 10-10	250V/100A Surge Suppression
			M1000	3000K	4M	UL	BK	PHL Programmable Multi-Level, up to 10-10	250V/100A Surge Suppression
				5000K	4M	UL	BK	PHL Programmable Multi-Level, up to 10-10	250V/100A Surge Suppression
	L	M1000	3000K	5M	UL	BK	PHL Programmable Multi-Level, up to 10-10	250V/100A Surge Suppression	
			5000K	5M	UL	BK	PHL Programmable Multi-Level, up to 10-10	250V/100A Surge Suppression	
		M1000	3000K	6M	UL	BK	PHL Programmable Multi-Level, up to 10-10	250V/100A Surge Suppression	
			5000K	6M	UL	BK	PHL Programmable Multi-Level, up to 10-10	250V/100A Surge Suppression	
			3000K	7M	UL	BK	PHL Programmable Multi-Level, up to 10-10	250V/100A Surge Suppression	
			5000K	7M	UL	BK	PHL Programmable Multi-Level, up to 10-10	250V/100A Surge Suppression	

** Lumen Package codes identify approximate light output only. Actual lumen output levels vary by CCT and optic selection. Refer to Initial Delivered Lumen tables for specific lumen values

* Available with RedCap® Shield when ordered with RedCap shielded accessory (see table on page 13)

** Luminaire comes standard with 0-10V dimming

UL LISTED
 ENE ENL
 CREE LIGHTING
 18001 234-4800
 Canada: cree@alberta-canada.com (800) 473-1234

CREE LIGHTING

FIXTURE TYPE : ZL-1-6L-3M
 ZL-1-6L-3M-BLS

XSP Series

XSP™ LED Wall Mount Luminaire featuring Cree TrueWhite® Technology

Rev. Date: Version 9 V6 06/02/2022

Product Description

The XSP™ LED wall mount luminaire has a slim, low profile design intended for outdoor wall mounted applications. The rugged lightweight aluminum housing and mounting box are designed for installation over standard single gang J-Boxes and mud ring single gang J-Boxes. The luminaire allows for through-wired or conduit entry from the top, bottom, sides and rear. The housing design is intended specifically for LED technology including a weatherright LED driver compartment and thermal management. Optic design features industry-leading NanoOptic® Precision Delivery Grid™ system in multiple distributions.

Applications: General area and security lighting

Performance Summary

NanoOptic® Precision Delivery Grid™ optic

Assembled in the USA by Cree Lighting from US and imported parts

Initial Delivered Lumens: Up to 8,075

CRI: Minimum 70 CRI (5000K, 4000K & 5700K); 90 CRI (5000K)

CCT: 3000K, 4000K, 5000K, 5700K

Limited Warranty: 10 years on luminaire/10 years on Colorfast DeltaGuard® finish/up to 5 years for Synapse® accessories/1 year on accessories

*See <http://www.cree.com/usa/products> for warranty terms

Accessories

Field-Installed	Hand-Held Remote
Beauty Plate WM-PL12™ - 12" (305mm) Square WM-PL14™ - 14" (356mm) Square	24-50000001 - For successful implementation of the programmable multi-level option, a minimum of one hand-held remote is required
OSQM 28.9 lbs. (13.1kg)	
OSQM 22.6 lbs. (10.3kg)	

** Must specify color

Note: Refer to page 11 for fixture mounting kit system. For additional mounts, refer to drawings beginning on page 19

Luminaire	Weight
OSQM	22.6 lbs. (10.3kg)
OSQM	28.9 lbs. (13.1kg)

Ordering Information

Example: XSPW-B-WM-2M-2L-30K-UL-BK

Product	Version	Mounting	Optic	Lumen Package*	CCT	Voltage	Color Options	Options
XSPW	B	WM	2M Type II Medium	2L 2,490 lumens	30K 3000K - 70 CRI	UL Universal 120-277V	BK Black	ML Multi-Level - Refer to ML spec sheet for details - Available with UL voltage only
			3M Type III Medium	3M 4,370 lumens	40K 4000K - 70 CRI	UL Universal 120-277V	BZ Bronze	P Button Protocol - Not available with ML or PHL options - Available with UL and 24 voltages only
			4M Type IV Medium	4M 6,180 lumens	50K 5000K - 70 CRI	UL Universal 120-277V	SV Silver	PHL Programmable Multi-Level - Refer to PHL spec sheet for details - Available with UL voltage only
			5M Type V Medium	5M 8,075 lumens	57K 5700K - 70 CRI	UL Universal 120-277V	WH White	

* Lumen Package selection codes identify approximate light output only. Actual lumen output levels may vary depending on CCT and optic selection. Refer to Initial Delivered Lumen tables for specific lumen values

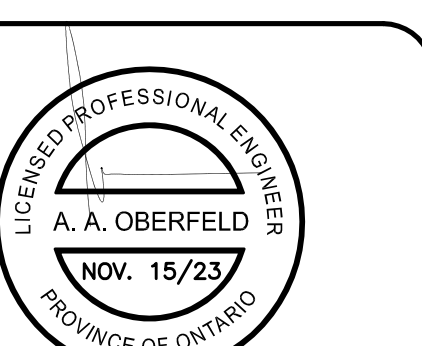
UL LISTED
 CREE LIGHTING
 18001 234-4800
 Canada: cree@alberta-canada.com (800) 473-1234

CREE LIGHTING

FIXTURE TYPE : WL-1-8L-4ME
 WL-1-6L-4ME
 WL-1-6L-2ME
 WL-1-6L-3ME

REVISIONS

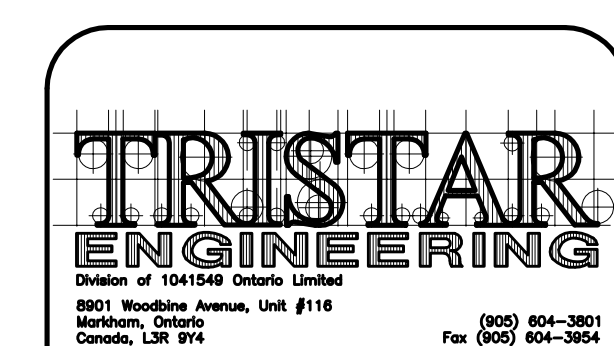
#	DATE
1.	ISSUED FOR S.P.A. AUG.17/23
2.	RE-ISSUED FOR S.P.A. NOV.15/23



GENERAL NOTES:
 ALL DRAWINGS & SPECIFICATIONS ARE THE PROPERTY OF THE ENGINEER AND CANNOT BE USED OR REPRODUCED WITHOUT HIS APPROVAL.

THE CONTRACTOR SHALL CHECK AND VERIFY ALL DIMENSIONS ON THE SITE AND REPORT ANY DISCREPANCY TO THE ENGINEER.

DO NOT SCALE THE DRAWING.
 THE CONTRACTOR WORKING FROM DRAWINGS NOT SPECIFICALLY MARKED "FOR CONSTRUCTION" MUST ASSUME FULL RESPONSIBILITY AND BEAR COSTS FOR ANY CORRECTIONS OR DAMAGES RESULTING FROM THIS WORK.



PROJECT
 INDUSTRIAL DEVELOPMENT
 1319 Johnston Road
 Ottawa, ON

DRAWING
 FIXTURES
 DETAIL

DATE	PROJECT NO
JUL. 2023	2023-105
DRAWN	DRAWING NO
D.P.	
CHECKED	
J.P.	
SCALE	LE-2
N.T.S.	