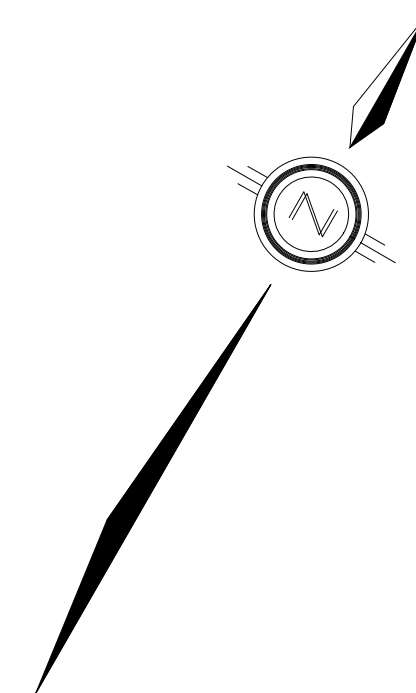
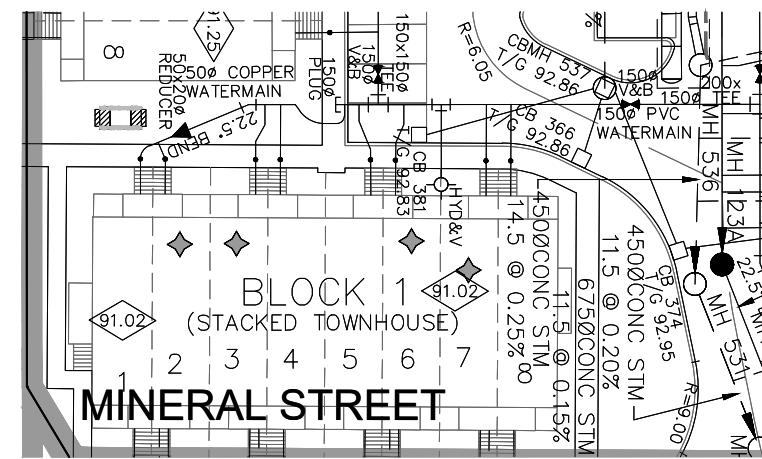
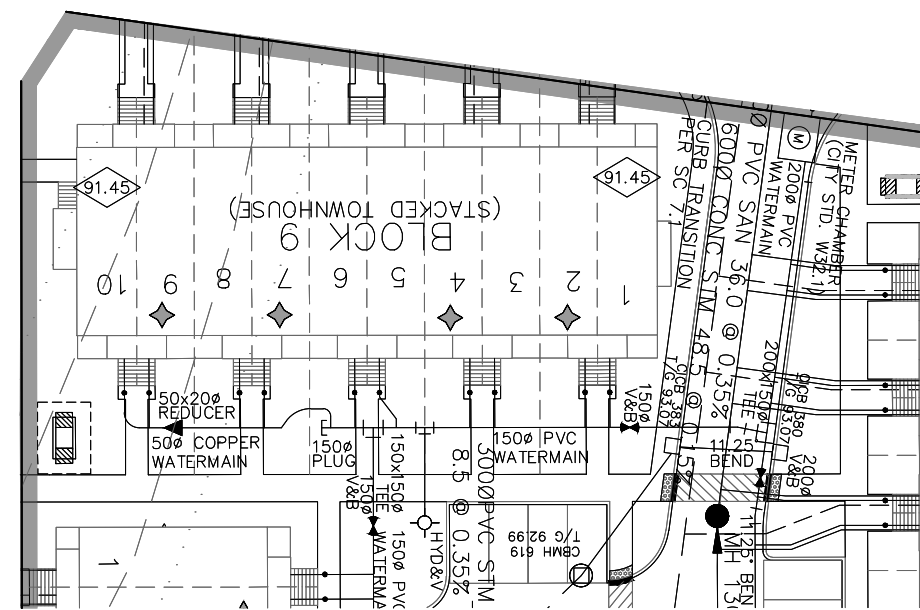


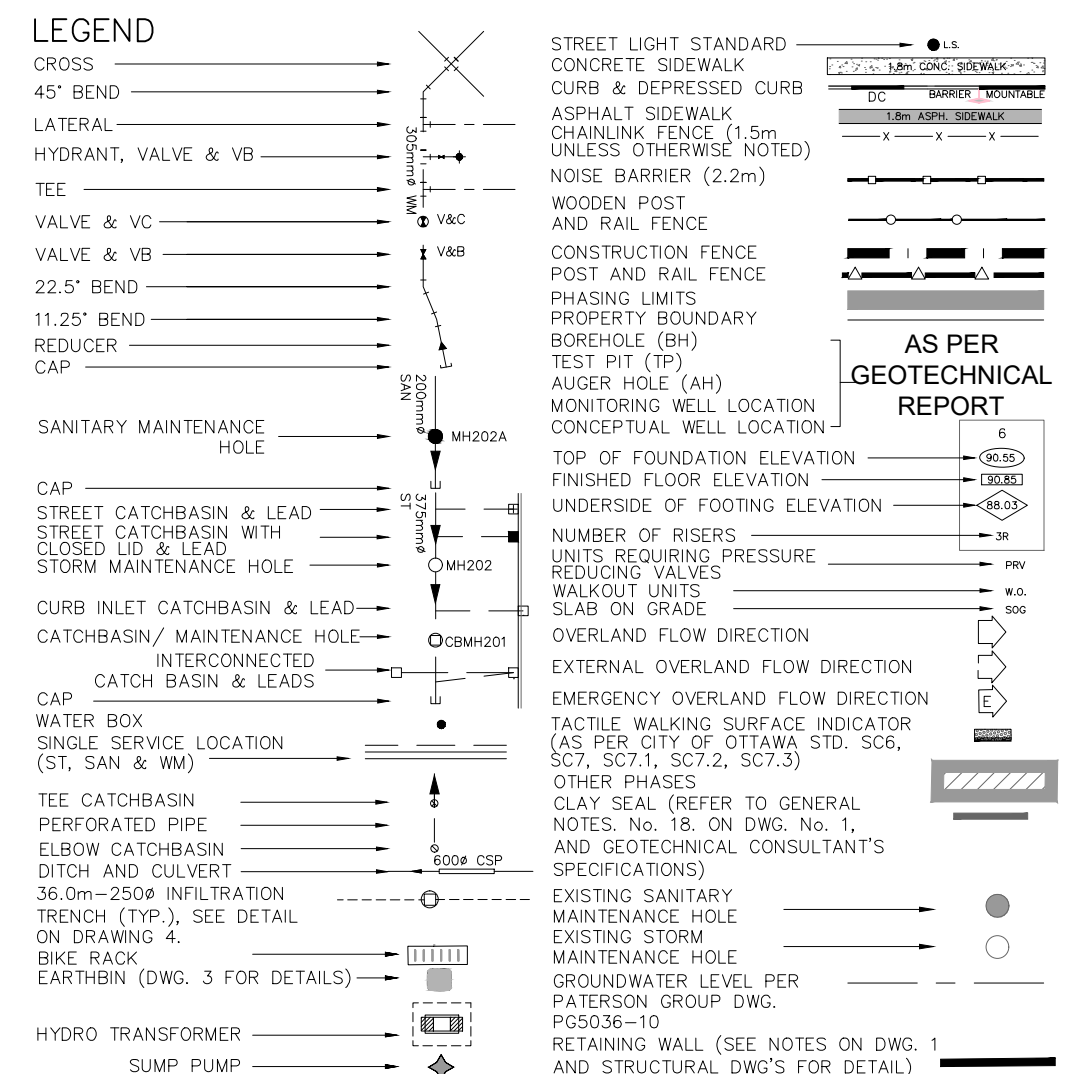
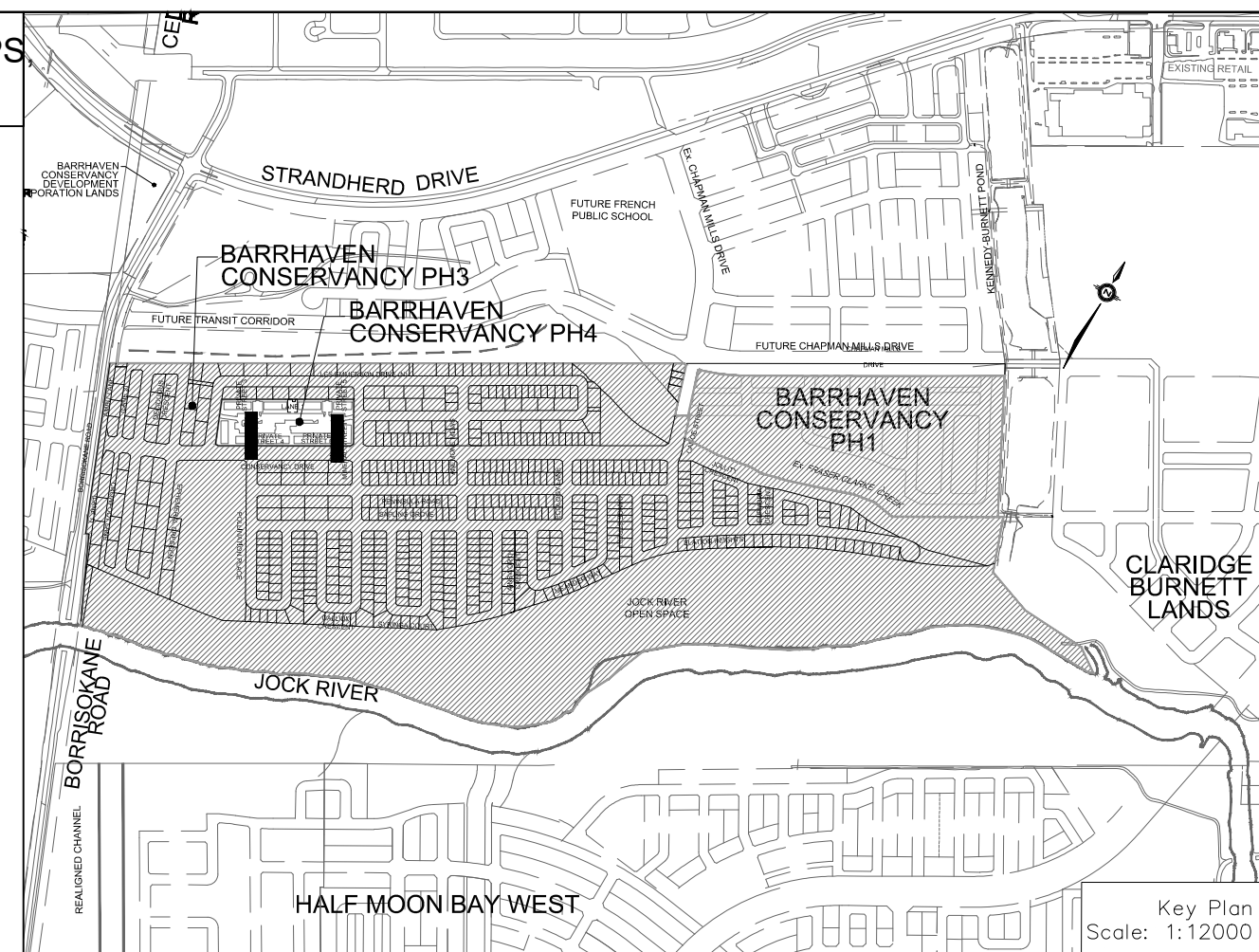
PAVEMENT DESIGN
40mm SUPERPAVE 12.5 ASPHALTIC CONCRETE
50mm SUPERPAVE 19.0 ASPHALTIC CONCRETE
150mm OPSS GRANULAR A CRUSHED STONE
400mm OPSS GRANULAR B TYPE II

NOTES:

1. ANY DISTURBED AREA DURING CONSTRUCTION TO BE RESTORED TO THE ORIGINAL CONDITION OR BETTER TO THE SATISFACTION OF THE AUTHORITIES HAVING JURISDICTION
2. CONTRACTOR TO VERIFY THE PRECISE LOCATIONS AND INVERT ELEVATIONS OF EX. UNDERGROUND SERVICES AND EX. UTILITIES PRIOR TO STARTING CONSTRUCTION
3. ALL EXISTING TREES, SHRUBS ETC. WITHIN LOTS, BLOCKS AND ROADS TO BE REMOVED, UNLESS OTHERWISE NOTED
4. PERMISSION REQUIRED FOR WORK ON ADJACENT LANDS
5. FOR WATERMAIN STUBS, 2.4m MIN. COVER TO BE PROVIDED
6. ANY DISTURBED MATERIAL ENCOUNTERED BELOW THE SUBGRADE LEVEL WITHIN A BUILDING FOOTPRINT TO BE SUB-EXCAVATED AND BACKFILLED WITH COMPACTED ENGINEERED FILL AS PER GEOTECHNICAL ENGINEERS RECOMMENDATION
7. FOR CATCHBASIN DATA, REFER TO DWG. No. 2 FOR DETAILS



G. Wildman
GERALDINE WILDMAN
MANAGER, DEVELOPMENT REVIEW SOUTH
PLANNING, DEVELOPMENT AND BUILDING SERVICES
DEPARTMENT, CITY OF OTTAWA
APPROVED
By Geraldine Wildman at 2:37 pm, Jan 09, 2026



TOPOGRAPHIC INFORMATION
TOPOGRAPHIC INFORMATION PROVIDED BY J.D. BARNES LIMITED, PROJECT No. 16-10-127-00, SURVEY DATED APRIL 10, 2018.

LEGAL INFORMATION
SITE CONCEPT PLAN PROVIDED BY Q4A ARCHITECTS, PROJECT No. 24006-SP1, RECEIVED ON NOVEMBER 28, 2024.

ELEVATION NOTE
ELEVATIONS SHOWN ON THIS PLAN ARE RELATED TO GEODETIC DATUM AND ARE RELATED TO THE PUBLISHED BENCH MARK No. 0011964U3710. ELEVATION=71.724m

9	W.L.	25-10-10	REVISED BLOCK 8 HOUSE CONNECTIONS
8	W.L.	25-09-02	REVISED PER ADS CHAMBER DESIGN
7	W.L.	25-08-15	4th SUBMISSION
6	W.L.	25-08-06	REVISED BLOCK 10 GRADING
5	W.L.	25-07-23	3rd SUBMISSION
4	W.L.	25-06-25	REVISED PER SWM DESIGN
3	W.L.	25-05-16	REVISED PER SWM DESIGN
2	W.L.	25-01-17	2nd SUBMISSION
1	X.W.	24-08-30	1st SUBMISSION
No.	BY	DATE	DESCRIPTION

CITY OF OTTAWA

PROJECT No. 24-1398

BARRHAVEN CONSERVANCY DEVELOPMENT CORPORATION

BCDC EAST STACKED CONDO SITE PLAN

DSEL

120 Iber Road, Unit 103
Stittsville, ON K2S 1E9
Tel: (613) 836-0866
Fax: (613) 836-7183
www.DSEL.ca

STREET 4 WATERMAIN & STREET 6 WATERMAIN

STREET 4 WATERMAIN & STREET 6 WATERMAIN

DRAWN BY: M.S.	CHECKED BY: W.L.	SHEET NO.
DESIGNED BY: W.L.	CHECKED BY: C.M.	8 OF 15
SCALE: H=1:500/V=1:50	DATE: AUGUST 2024	

