

**Q4 ARCHITECTS INC.**

4110 Yonge Street  
Suite 602, Toronto ON  
M2P 2B7

T. 416.322.6334  
F. 416.322.7294  
E. info@q4architects.com

The contractor / builder must verify all dimensions on the job and report any discrepancy to the designer before proceeding with the work.

**PROFESSIONAL STAMP**

Drawings are NOT to be scaled. All drawings and specifications are instruments of service and the copyright property of the designer and must be returned upon request.

Q4 Architects Inc. retains the copyright in all drawings, plans, sketches, and all digital information. They may not be copied or used for any other projects or purposes or distributed without the written consent of Q4 Architects Inc.

**NOTES:**

Block elevations are to vary between the provided two options Option 1 and Option 2.

Blocks that front public ROW (Les Emmerson, Mineral and Conservancy Dr) will have a Typical front elevations with Upgraded rear elevations varying between blocks with Option1 and Option 2.

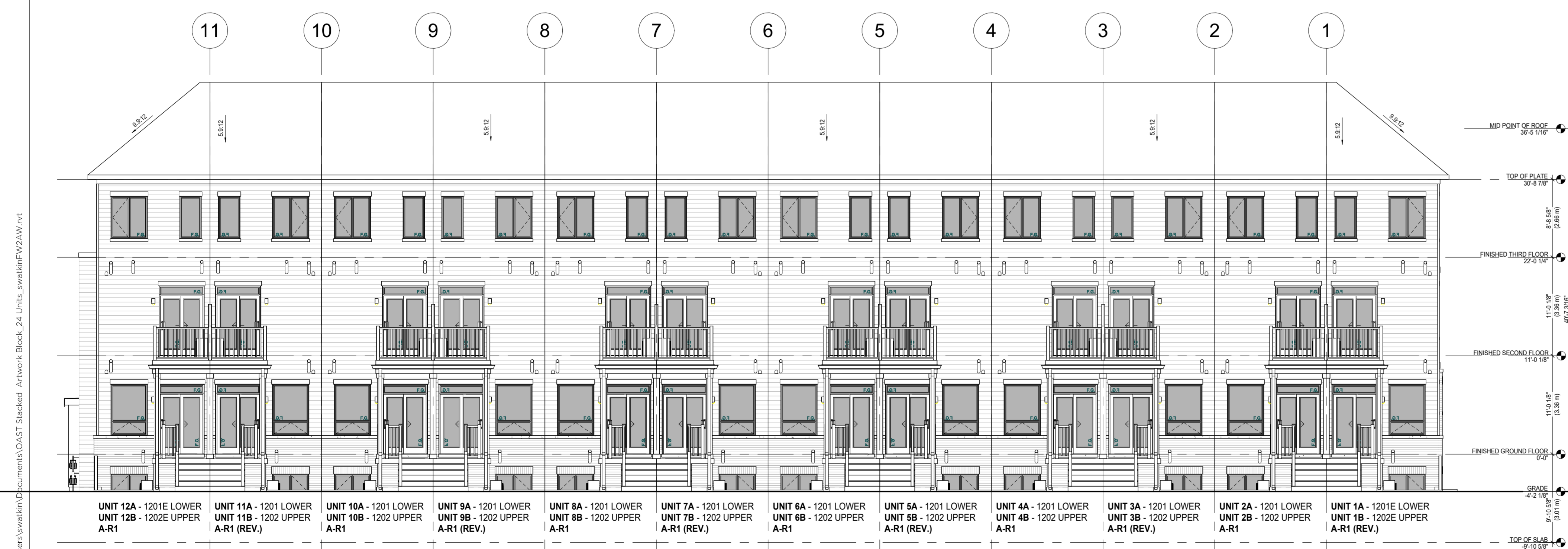
Blocks 2, 5, 6 and will have both Typical front and rear elevations. Elevation style to vary between blocks.



**1 24 UNIT BLOCK - FRONT ELEVATION A**  
1/8" = 1'-0"



**4 24 UNIT BLOCK - RIGHT ELEVATION A**  
1/8" = 1'-0"



**2 24 UNIT BLOCK - REAR ELEVATION A**  
1/8" = 1'-0"



**3 24 UNIT BLOCK - LEFT ELEVATION A**  
1/8" = 1'-0"

1 ISSUED FOR CLIENT REVIEW 2024.08.20 SDW

Issued / Revision Chart  
**PLAN NO. 18754**  
**DEV. NO. D07-12-24-0097**

**OAST Stacked Towns**  
**24 UNIT BLOCK with**  
**2 End Units**

CONSERVANCY  
STACKED TOWNS  
Part of Lot 14, Concession r (Rideau Front),  
Geographic Township of Nepean

Ottawa, ON  
3285 Borrisokane Rd.  
OTTAWA, ON.

**CAIVAN**

Project No. **24016**

Scale **1/8" = 1'-0"**

Drawn By **JM**

Checked By **SW**

**ELEVATIONS**

**Q4 ARCHITECTS INC.**

4110 Yonge Street  
Suite 602, Toronto ON  
M2P 2B7

T. 416.322.6334  
F. 416.322.7294  
E. info@q4architects.com

The contractor / builder must verify all dimensions on the job and report any discrepancy to the designer before proceeding with the work. Drawings are NOT to be scaled. All drawings and specifications are instruments of service and the copyright property of the designer and must be returned upon request.

PROFESSIONAL  
STAMP

Q4 Architects Inc. retains the copyright in all drawings, plans, sketches, and all digital information. They may not be copied or used for any other projects or purposes or distributed without the written consent of Q4 Architects Inc.

**NOTES:**

Block elevations are to vary between blocks with the provided two options Option 1 and Option 2.

Blocks that front public ROW (Les Emmerson, Mineral and Conservancy Dr) will have a Typical front elevations with Upgraded rear elevations varying between blocks with Option 1 and Option 2.

Blocks 2, 5, 6 and will have both Typical front and rear elevations. Elevation style to vary between blocks.



1 24 UNIT BLOCK - FRONT ELEVATION B  
1/8" = 1'-0"



4 24 UNIT BLOCK - RIGHT ELEVATION B  
1/8" = 1'-0"



2 24 UNIT BLOCK - REAR ELEVATION B  
1/8" = 1'-0"



3 24 UNIT BLOCK - LEFT ELEVATION B  
1/8" = 1'-0"

1 ISSUED FOR CLIENT REVIEW 2024.08.20 SDW

Issued / Revision Chart  
PLAN NO. 18754  
DEV. NO. D07-12-24-0097

**OAST Stacked Towns  
24 UNIT BLOCK with  
2 End Units  
CONSERVANCY  
STACKED TOWNS**  
Part of Lot 14, Concession r (Rideau Front),  
Geographic Township of Nepean

Ottawa, ON  
3285 Borrisokane Rd.  
OTTAWA, ON.

CAIVAN

Project No. 24016  
Scale 1/8" = 1'-0"  
Drawn By JM  
Checked By SW

**ELEVATIONS**

C:\Users\kavani\Documents\OAST Stacked Towns\Block\_24 Units\kavani\FW24AV.rvt 2024-10-03 13:58:46