

TOPOGRAPHICAL PLAN OF SURVEY OF

PART OF BLOCK 3  
REGISTERED PLAN 50M-136  
CITY OF OTTAWA

Surveyed by Annis, O'Sullivan, Vollebekk Ltd.



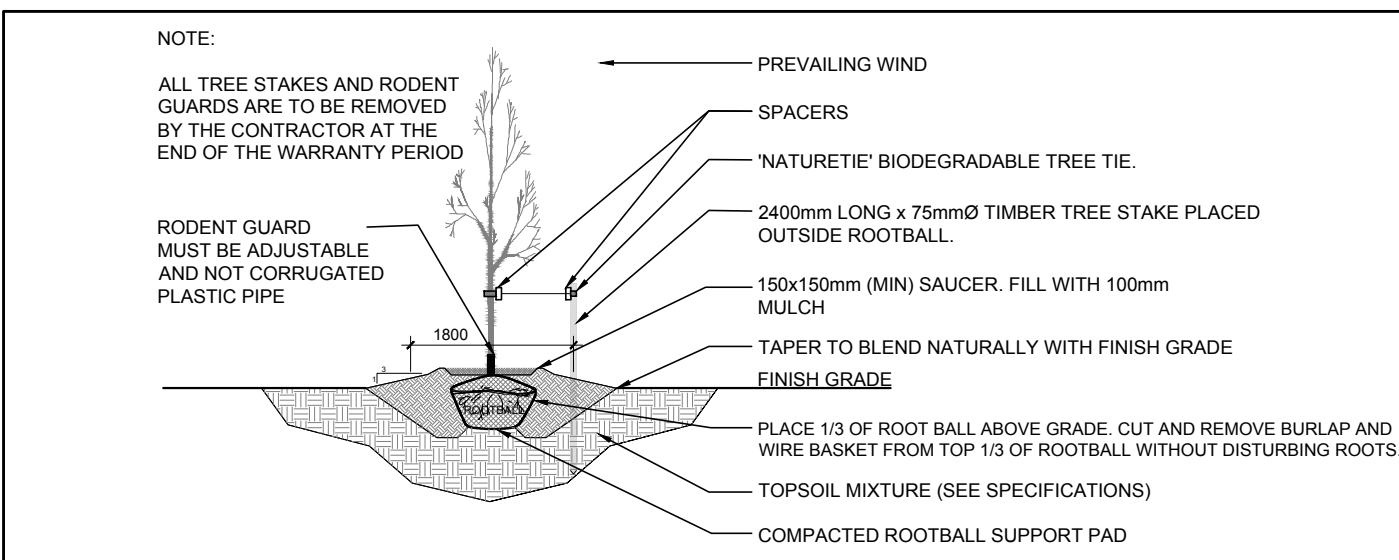
GENERAL NOTES:

- IT IS THE RESPONSIBILITY OF THE APPROPRIATE CONTRACTOR OR OFFICIAL TO REPORT ANY ERRORS, OMISSIONS OR DISCREPANCIES ON THIS PLAN WITH ACTUAL SITE CONDITIONS TO THE LANDSCAPE ARCHITECT BEFORE PROCEEDING WITH CONSTRUCTION.
- THE CONTRACTOR IS TO NOTIFY ALL UTILITY COMPANIES AND AUTHORITIES PRIOR TO ANY EXCAVATION AND ASCERTAIN LOCATIONS OF UNDERGROUND SERVICES.
- THE CONTRACTOR IS TO REINSTATE ALL AREAS AND ITEMS DAMAGED AS A RESULT OF CONSTRUCTION ACTIVITY.
- THE CONTRACTOR IS TO COMPLY WITH ALL PERTINENT CODES AND BY-LAWS.
- THE CONTRACTOR IS TO MAINTAIN A POSITIVE SURFACE RUN-OFF THROUGHOUT THE ENTIRE CONSTRUCTION PERIOD.
- THE LANDSCAPE ARCHITECT IS NOT RESPONSIBLE FOR SUBSURFACE CONDITIONS.
- THE CONTRACTOR IS TO STAKE THE PROPOSED LOCATION OF ALL PLANT MATERIAL IN CONJUNCTION WITH THE LANDSCAPE ARCHITECT PRIOR TO EXCAVATION.
- MINIMUM DISTANCES FOR SELECTED DECIDUOUS TREES ARE AS FOLLOWS:
  - BUILDING FOUNDATIONS - 7.5M
  - SIDEWALKS - 1.5M
  - PUBLIC STREETS - 2.5M
  - UNDERGROUND INFRASTRUCTURE - 2.0M
- ALL TREES WITHIN 1M OF UNDERGROUND UTILITY TRENCHES ARE TO BE EXCAVATED BY HAND.
- REMOVE ALL PROTECTIVE WRAPPING FROM TREE TRUNKS AFTER INSTALLATION.
- STAKING OF TREES SHALL ONLY BE PERFORMED IF NECESSARY.
- ENSURE THAT MULCH IS PULLED BACK A MINIMUM DISTANCE OF 75MM FROM BASE OF TREE TRUNK.

PROPOSED PLANT LIST

KEY	QTY.	BOTANICAL NAME	COMMON NAME	SIZE	CONDITION	REMARKS	NATIVE SPECIES
TREES							
PT	1	Populus tremuloides	Trembling Aspen	50mm cal.	B&B		YES
RM	2	Acer rubrum	Red Maple	50mm cal.	B&B		YES
SB	2	Amelanchier canadensis	Shadblow Serviceberry	50mm cal.	B&B		YES
SF	1	Amelanchier laevis 'JFS-ARB'	Spring Flurry Serviceberry	50mm cal.	B&B		YES
WB	2	Betula papyrifera	White Birch	50mm cal.	B&B		YES

NOTE: All 8 TREES ARE PROPOSED ON PRIVATE PROPERTY



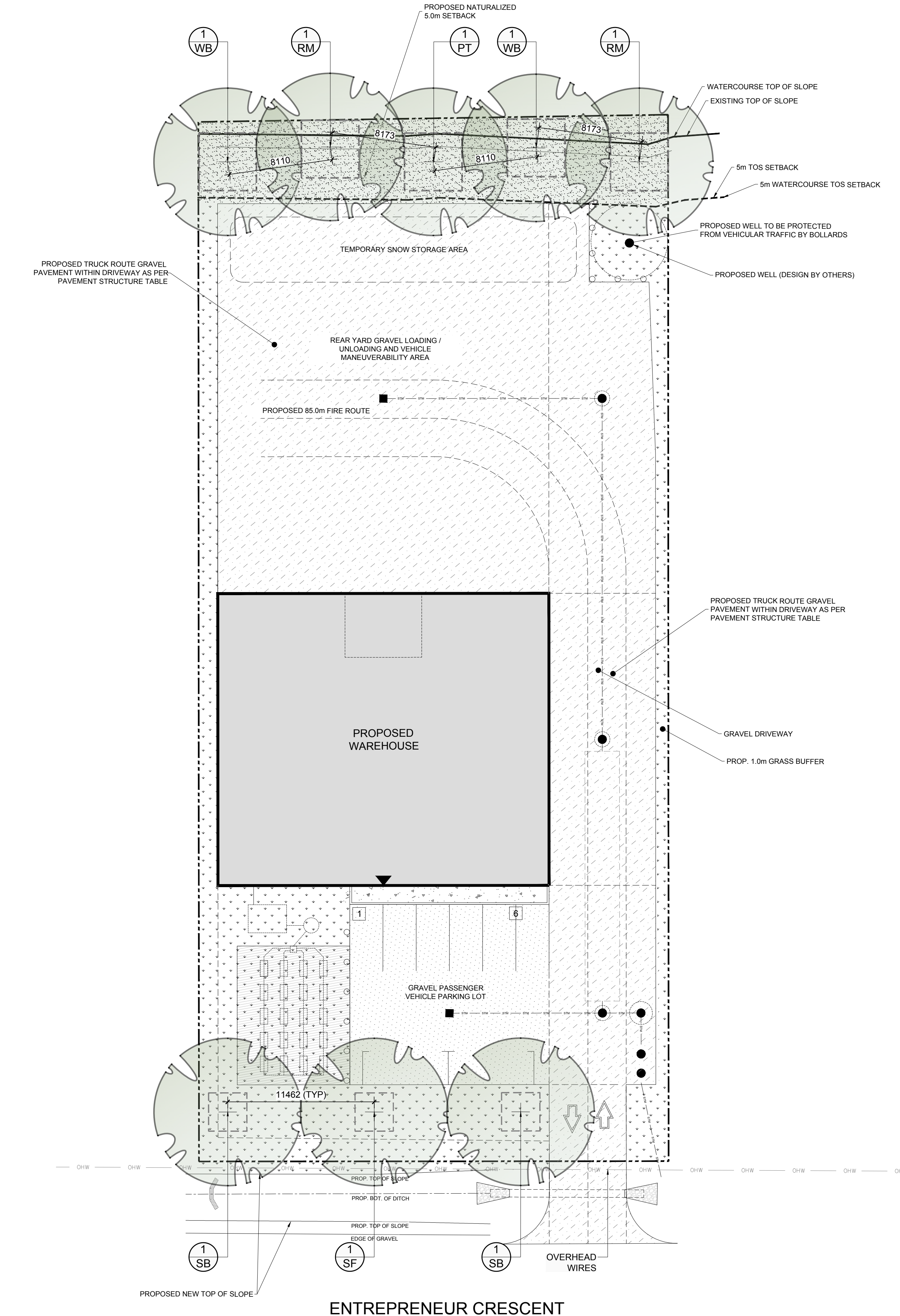
2 DECIDUOUS TREE PLANTING  
L.1 SCALE: NTS

40 YEAR CANOPY CALCULATION:

-3002m2 site area  
-5 Large deciduous trees proposed (154m2 ea.) and 3 small deciduous trees proposed (7m2 ea.)  
=791m2 canopy cover =26.3% canopy cover  
\*Large deciduous tree calculated at 14m spread, small tree calculated at 3m spread

NOTE RE: EXISTING TREES

PER SECTION 5.2 OF THE ENVIRONMENTAL IMPACT STATEMENT PREPARED BY KILGOUR & ASSOCIATES LTD. 2023-09-15 THE SITE IS "COMPLETELY DEVOID OF ANY VEGETATION"



1 LANDSCAPE PLAN  
L.1 SCALE 1:200



CLIENT

DUSTIN WILSON

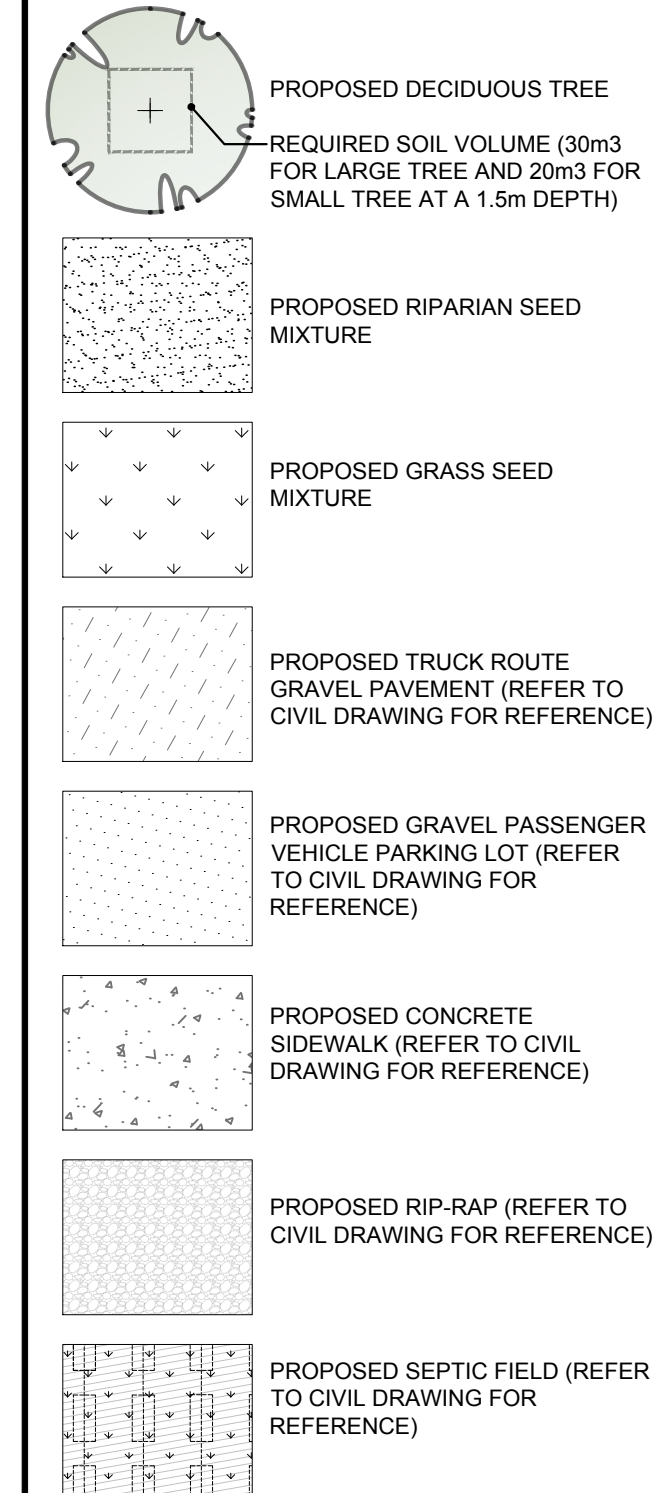
CONSULTANTS

CIVIL ENGINEERS:



ENGINEERING | INGÉNIERIE  
5430 Carleton Road | Ottawa, ON, K1J 9G2  
www.lri.ca | (613) 842-3434

LEGEND

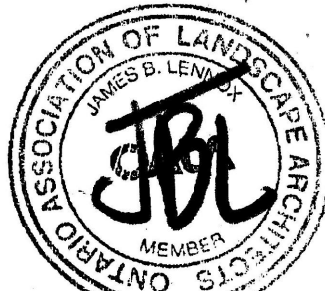


3	REVISED PER CITY COMMENTS	01/21/2025	ML JL
2	ISSUED FOR DISCUSSION AND REVIEW	12/06/2024	ML JL
1	ISSUED FOR DISCUSSION AND REVIEW	07/31/2024	ML JL
No.	Issue	Date	DR CK

JAMES B. LENNOX & ASSOCIATES INC.  
LANDSCAPE ARCHITECTS  
3332 CARLING AVE. OTTAWA, ONTARIO K2H 5A8  
Tel. (613) 722-5168 Fax. (866) 343-3942

PROJECT  
PROPOSED WAREHOUSE DEVELOPMENT  
363 ENTREPRENEUR CRESCENT, OTTAWA ON

DRAWING  
LANDSCAPE PLAN

STAMP	SCALE
	AS SHOWN
	START DATE
	JULY 2024
	PROJECT NO.

PROJECT NORTH 	DRAWING NO. <b>L.1</b> PLOT SIZE ARCH-D
-------------------	---