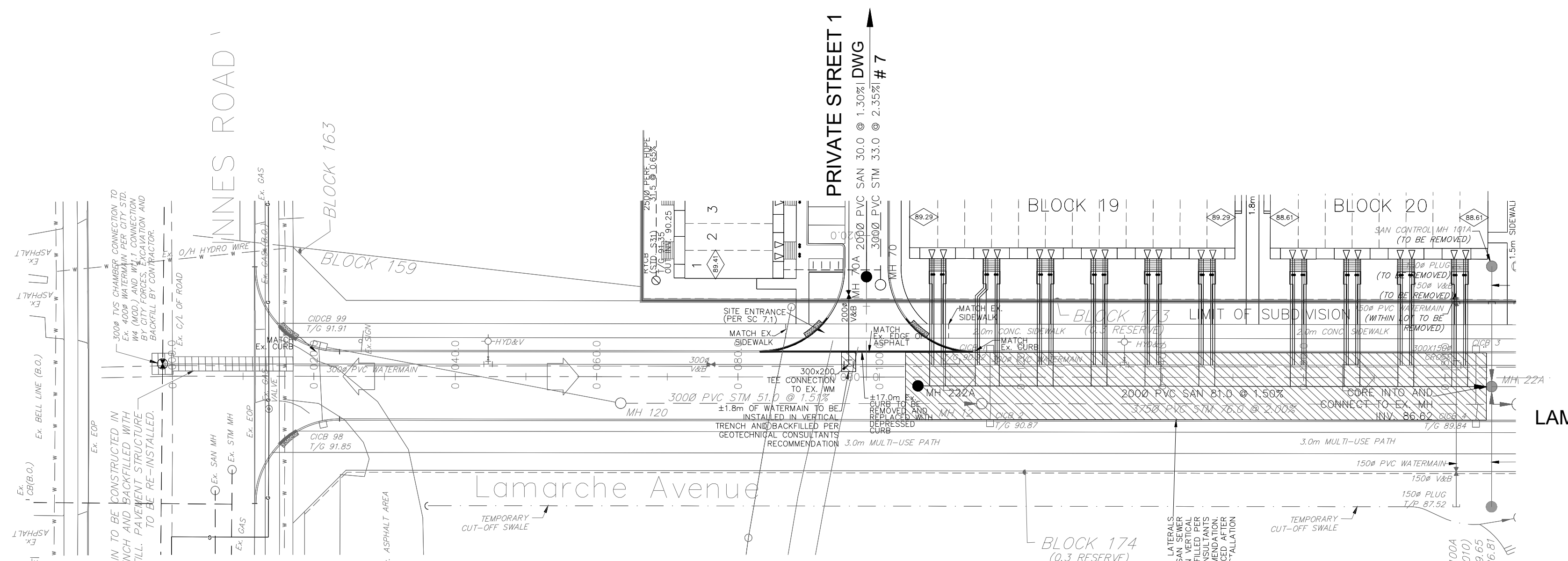


**NOTES:**

1. ANY DISTURBED AREA DURING CONSTRUCTION TO BE RESTORED TO THE ORIGINAL CONDITION OR BETTER TO THE SATISFACTION OF THE AUTHORITIES HAVING JURISDICTION.
2. CONTRACTOR TO VERIFY THE PRECISE LOCATIONS AND INVERT ELEVATIONS OF EX. UNDERGROUND SERVICES AND EX. UTILITIES PRIOR TO STARTING CONSTRUCTION.
3. ALL EXISTING TREES, SHRUBS ETC. WITHIN LOTS, BLOCKS AND ROADS TO BE REMOVED, UNLESS OTHERWISE NOTED.
4. PERMISSION REQUIRED FOR WORK ON ADJACENT LANDS.
5. FOR WATERMAIN STUBS, 2.4m MIN. COVER TO BE PROVIDED.
6. ANY DISTURBED MATERIAL ENCOUNTERED BELOW THE SUBGRADE LEVEL WITHIN A BUILDING FOOTPRINT TO BE SUB-EXCAVATED AND BACKFILLED WITH COMPACTED ENGINEERED FILL AS PER GEOTECHNICAL ENGINEERS RECOMMENDATION.
7. FOR CATCHBASIN DATA, REFER TO DWG. No. 2 FOR DETAILS.
8. ALL DWELLINGS TO BE PROVIDED WITH PRESSURE REDUCING VALVES UNLESS OTHERWISE NOTED.



LAMARCHE AVENUE



Key Plan  
Scale: 1:5000

**LEGEND**

CROSS	BIKE RACK	AS PER GEOTECHNICAL REPORT
45° BEND	EARTHEN (DWG. 3 FOR DETAILS)	CONCEPTUAL WELL LOCATION
LATERAL	STREET LIGHT STANDARD	TOP OF FOUNDATION ELEVATION
HYDRANT, VALVE & VB	CONCRETE SIDEWALK	FINISHED FLOOR ELEVATION
TEE	CURB & RECESSED CURB	UNDERSIDE OF FOOTING ELEVATION
VALVE & VC	ASPHALT SIDEWALK	NUMBER OF RISERS
VALVE & VB	CHAINLINK FENCE (1.5m UNLESS OTHERWISE NOTED)	UNITS REQUIRING PRESSURE
22.5° BEND	NOISE BARRIER (2.2m)	REDUCING VALVES
REDUCER	WOODEN POST AND RAIL FENCE	WALKOUT UNITS
CAP	CONSTRUCTION FENCE	SLAB ON GRADE
SANITARY MAINTENANCE HOLE	POST AND RAIL FENCE	OVERLAND FLOW DIRECTION
CAP	PHASING LIMITS	EXTERNAL OVERLAND FLOW DIRECTION
STREET CATCHBASIN & LEAD	PROPERTY BOUNDARY	EMERGENCY OVERLAND FLOW DIRECTION
STREET CATCHBASIN WITH CLOSED LID & LEAD	BOREHOLE (BH)	TACTILE WALKING SURFACE INDICATOR (AS PER CITY OF OTTAWA STD. SC6, SC7, SC7.1, SC7.2, SC7.3)
STORM MAINTENANCE HOLE	TEST PIT (TP)	PREVIOUS PHASES
CURB INLET CATCHBASIN & LEAD	AUGER HOLE (AH)	
CATCHBASIN/ MAINTENANCE HOLE	MONITORING WELL LOCATION	
INTERCONNECTED		
CATCH BASIN & LEADS		
CAP		
CURB STOP		
SINGLE SERVICE LOCATION (ST, SAN & WM)		
TEE CATCHBASIN		
PERFORATED PIPE		
ELBOW CATCHBASIN		
DITCH AND CULVERT		
36.0m-250# INFILTRATION TRENCH (TYP.), SEE DETAIL ON DRAWING 4.		
HYDRO TRANSFORMER		
RETAINING WALL (SEE NOTES ON DWG. 1 AND STRUCTURAL DWG'S FOR DETAIL)		

**NOT FOR CONSTRUCTION**

**TOPOGRAPHIC INFORMATION**  
 TOPOGRAPHIC INFORMATION PROVIDED BY J.D. BARNES LIMITED  
 PROJECT No. 16-10-116-00, SURVEYS DATED NOVEMBER 30, 2017.  
 PROJECT No. 16-10-116-00\_PH2, SURVEYS DATED SEPTEMBER 27, 2019.  
 PROJECT No. 22-10-030-01, SURVEYS DATED JUNE 21, 2023.

**SITE PLAN INFORMATION**  
 SITE PLAN PROVIDED BY Q4 ARCHITECTS, DATED ON AUGUST 6, 2024.

**ELEVATION NOTE**  
 ELEVATIONS ARE GEODETIC AND ARE DERIVED FROM SITE BENCHMARK NCC CONTROL POINT 001196530229.  
 ELEVATION = 86.12 m

No.	BY	DATE	DESCRIPTION
1	S.L.M.	2024-08-30	1st SUBMISSION

**CITY OF OTTAWA**

PROJECT No. 24-1403

CAIVAN (ORLEANS VILLAGE 2) LTD.      ORLEANS VILLAGE PHASE 4

**DSEL**

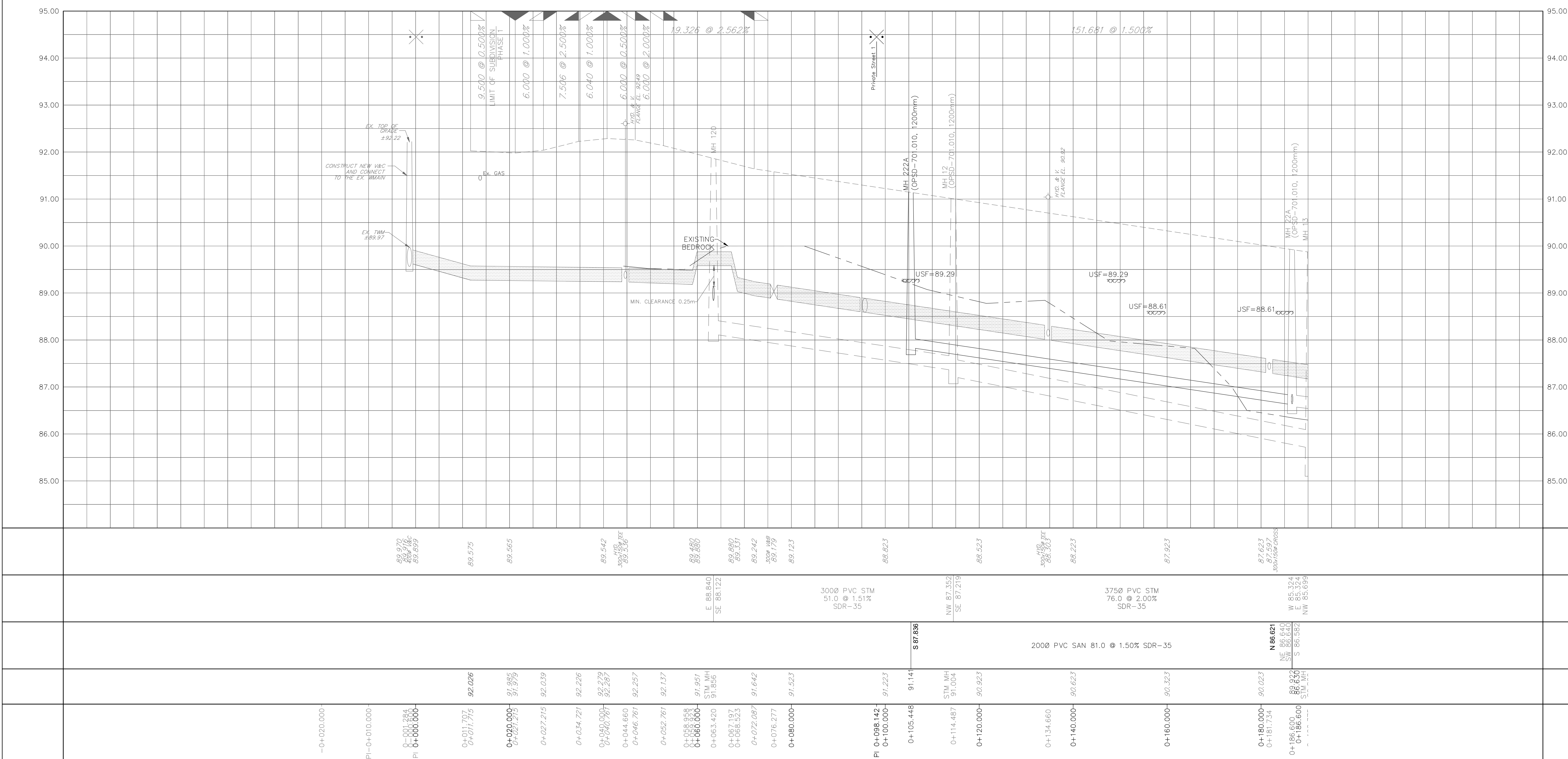
120 Ibor Road, Unit 103  
 Stittsville, ON K2S 1E9  
 Tel: (613) 836-0856  
 Fax: (613) 836-7183  
 www.DSEL.ca

© DSEL

**LAMARCHE AVENUE**

STA. 0+10.000 TO STA. 0+190.000

DRAWN BY: C.P.B.	CHECKED BY: S.L.M.	SHEET NO. 17 OF 25
DESIGNED BY: C.P.B.	CHECKED BY: S.L.M.	
SCALE: 1:500	DATE: AUGUST 2024	



CITY PLAN No. ###  
CITY FILE No. ###