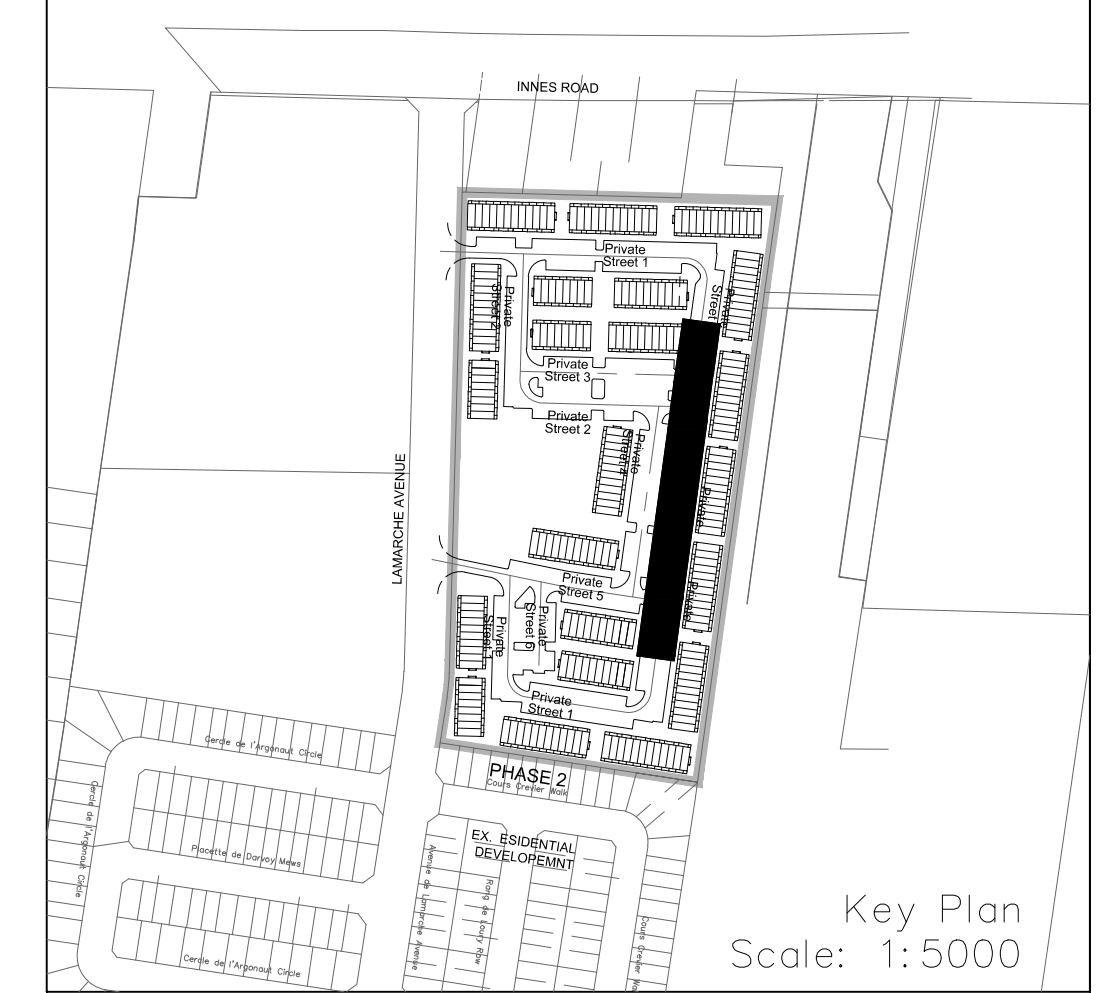
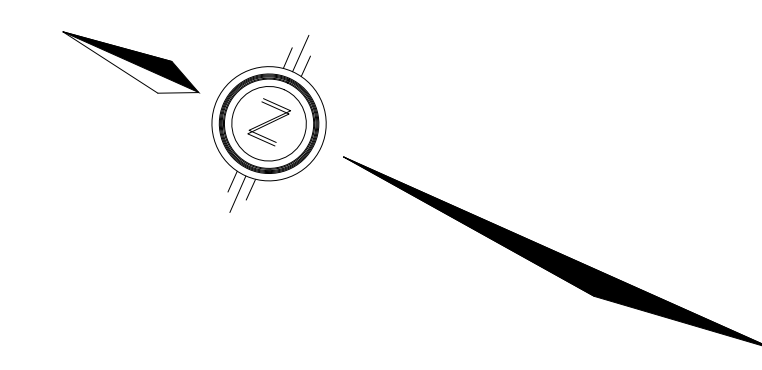
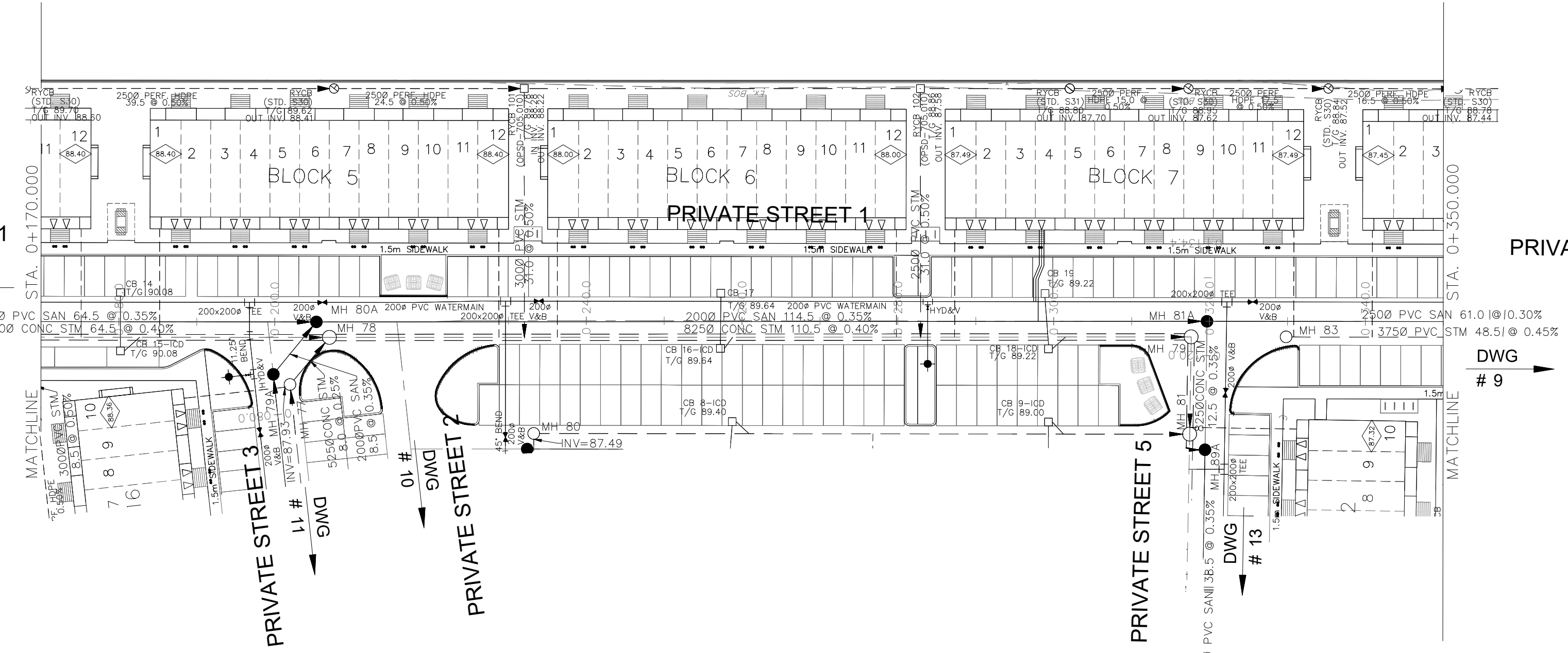


NOTES:

1. ANY DISTURBED AREA DURING CONSTRUCTION TO BE RESTORED TO THE ORIGINAL CONDITION OR BETTER TO THE SATISFACTION OF THE AUTHORITIES HAVING JURISDICTION. CONTRACTOR TO VERIFY THE PRECISE LOCATIONS AND INVERT ELEVATIONS OF EX. UNDERGROUND SERVICES AND EX. UTILITIES PRIOR TO STARTING CONSTRUCTION.
2. ALL EXISTING TREES, SHRUBS ETC. WITHIN LOTS, BLOCKS AND ROADS TO BE REMOVED, UNLESS OTHERWISE NOTED.
3. PERMISSION REQUIRED FOR WORK ON ADJACENT LANDS.
4. FOR WATERMAIN STUBS, 2.4m MIN. COVER TO BE PROVIDED.
5. ANY DISTURBED MATERIAL ENCOUNTERED BELOW THE SUBGRADE LEVEL WITHIN A BUILDING FOOTPRINT TO BE SUB-EXCAVATED AND BACKFILLED WITH COMPACTED ENGINEERED FILL AS PER GEOTECHNICAL ENGINEERS RECOMMENDATION.
6. FOR CATCHBASIN DATA, REFER TO DWG. No. 2 FOR DETAILS.
7. ALL DWELLINGS TO BE PROVIDED WITH PRESSURE REDUCING VALVES UNLESS OTHERWISE NOTED.

PRIVATE STREET 1
DWG # 7

PRIVATE STREET 1
DWG # 9



LEGEND

CROSS	BIKE RACK	EARTHEN (DWG. 3 FOR DETAILS)
45° BEND	STREET LIGHT STANDARD	CONCRETE SIDEWALK
LATERAL	CURB & RECESSED CURB	ASPHALT SIDEWALK
HYDRANT, VALVE & VB	CHAIN LINK FENCE (1.5m UNLESS OTHERWISE NOTED)	NOISE BARRIER (2.2m)
TEE	WOODEN POST AND RAIL FENCE	CONSTRUCTION FENCE
VALVE & VC	CONSTRUCTION FENCE	POST AND RAIL FENCE
VALVE & VB	PHASING LIMITS	PROPERTY BOUNDARY
22.5° BEND	REDUCER	BOREHOLE (BH)
11.25° BEND	CAP	TEST PIT (TP)
REDUCER	SANITARY MAINTENANCE HOLE	AUGER HOLE (AH)
CAP	STREET CATCHBASIN & LEAD	MONITORING WELL LOCATION
STREET CATCHBASIN & LEAD	FINISHED CATCHBASIN WITH CLOSED LID & LEAD	CONCEPTUAL WELL LOCATION
FINISHED CATCHBASIN WITH CLOSED LID & LEAD	STORM MAINTENANCE HOLE	TOP OF FOUNDATION ELEVATION
STORM MAINTENANCE HOLE	CURB INLET CATCHBASIN & LEAD	FINISHED FLOOR ELEVATION
CURB INLET CATCHBASIN & LEAD	CATCHBASIN/ MAINTENANCE HOLE- INTERCONNECTED	UNDERSIDE OF FOOTING ELEVATION
CATCHBASIN/ MAINTENANCE HOLE- INTERCONNECTED	CATCH BASIN & LEADS	NUMBER OF RISERS
CATCH BASIN & LEADS	CAP	UNITS REQUIRING PRESSURE REDUCING VALVES
CAP	CURB STOP	WALK-OUT UNITS
CURB STOP	SINGLE SERVICE LOCATION (ST, SAN & WM)	SLAB ON GRADE
SINGLE SERVICE LOCATION (ST, SAN & WM)	TEE CATCHBASIN	OVERLAND FLOW DIRECTION
TEE CATCHBASIN	PERFORATED PIPE	EXTERNAL OVERLAND FLOW DIRECTION
PERFORATED PIPE	ELBOW CATCHBASIN	EMERGENCY OVERLAND FLOW DIRECTION
ELBOW CATCHBASIN	DITCH AND CULVERT	TACTILE WALKING SURFACE INDICATOR (AS PER CITY OF OTTAWA STD. SC6, SC7, SC7.1, SC7.2, SC7.3)
DITCH AND CULVERT	36.0m-250# INFILTRATION TRENCH (TYP.), SEE DETAIL ON DRAWING 4.	PREVIOUS PHASES
36.0m-250# INFILTRATION TRENCH (TYP.), SEE DETAIL ON DRAWING 4.	HYDRO TRANSFORMER	EXISTING SANITARY MAINTENANCE HOLE
HYDRO TRANSFORMER	RETAINING WALL (SEE NOTES ON DWG. 1 AND STRUCTURAL DWG'S FOR DETAIL)	EXISTING STORM MAINTENANCE HOLE
RETAINING WALL (SEE NOTES ON DWG. 1 AND STRUCTURAL DWG'S FOR DETAIL)		GROUNDWATER LEVEL PER PATTERSON GROUP DWG. P0006-10

NOT FOR CONSTRUCTION

TOPOGRAPHIC INFORMATION
 TOPOGRAPHIC INFORMATION PROVIDED BY J.D. BARNES LIMITED
 PROJECT No. 16-10-116-00, SURVEYS DATED NOVEMBER 30, 2017.
 PROJECT No. 16-10-116-00_PH2, SURVEYS DATED SEPTEMBER 27, 2019.
 PROJECT No. 22-10-030-01, SURVEYS DATED JUNE 21, 2023.

SITE PLAN INFORMATION
 SITE PLAN PROVIDED BY Q4 ARCHITECTS, DATED ON AUGUST 6, 2024.

ELEVATION NOTE
 ELEVATIONS ARE GEODETIC AND ARE DERIVED FROM SITE BENCHMARK NCC CONTROL POINT 001196530229.
 ELEVATION = 86.12 m

No.	BY	DATE	DESCRIPTION
1	S.L.M.	2024-08-30	1st SUBMISSION

CITY OF OTTAWA

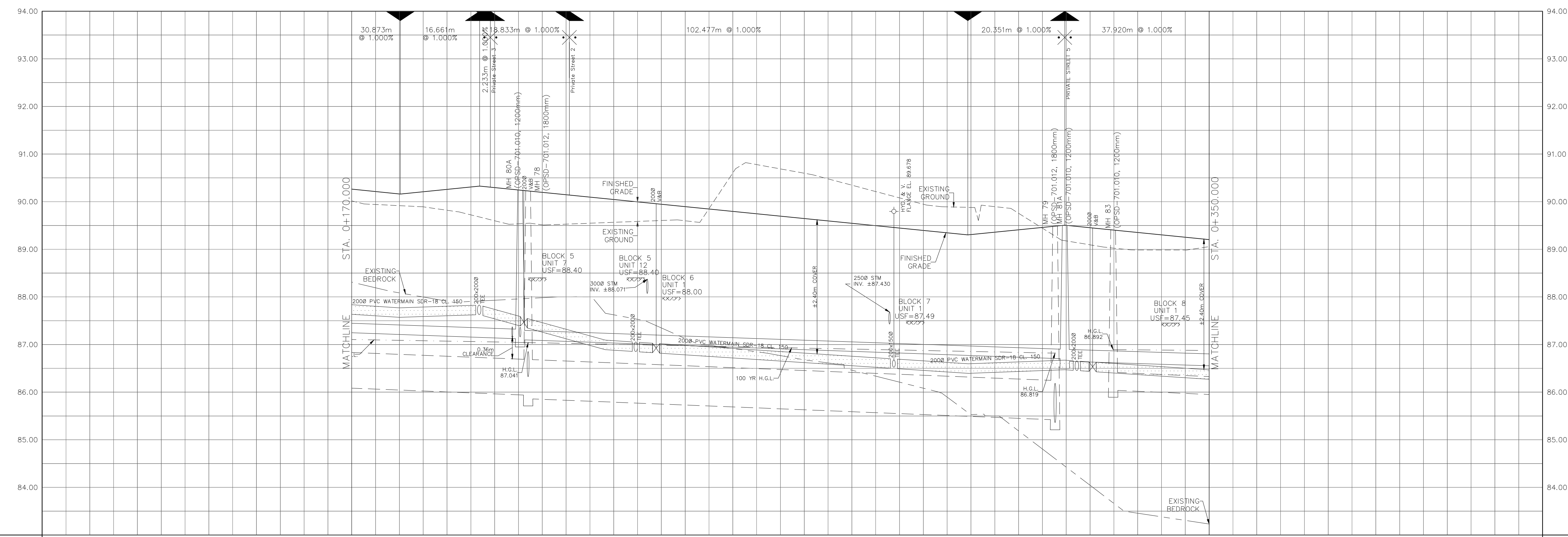
PROJECT No. 24-1403

CAIVAN (ORLEANS VILLAGE 2) LTD. ORLEANS VILLAGE PHASE 4

DSEL 120 Ibor Road, Unit 103
 Stittsville, ON K2S 1E9
 Tel: (613) 836-0856
 Fax: (613) 836-7183
 www.DSEL.ca

Private Street 1 © DSEL
 STA. 0+170.000 TO STA. 0+350.000

DRAWN BY: C.P.B.	CHECKED BY: S.L.M.	SHEET NO.
DESIGNED BY: C.P.B.	CHECKED BY: S.L.M.	8 OF 25
SCALE: 1:500	DATE: AUGUST 2024	



87.71	2000 PVC SAN 64.5 @ 0.35% SDR-35	87.71	2000 PVC SAN 114.5 @ 0.35% SDR-35	87.71	2500 PVC SAN 61.0 @ 0.30% SDR-35
90.327	7500 CONC STM 64.5 @ 0.40% 100-D	90.327	8250 CONC STM 110.5 @ 0.40% 100-D	90.327	3750 PVC STM 48.5 @ 0.45% SDR-35
90.139		90.139		90.139	
90.096		90.096		90.096	
90.072		90.072		90.072	
90.030		90.030		90.030	
89.886		89.886		89.886	
89.696		89.696		89.696	
89.496		89.496		89.496	
88.822		88.822		88.822	
88.857		88.857		88.857	
88.899		88.899		88.899	
88.671		88.671		88.671	
88.624		88.624		88.624	
88.609		88.609		88.609	
88.535		88.535		88.535	

CITY PLAN No. ###

CITY FILE No. ###