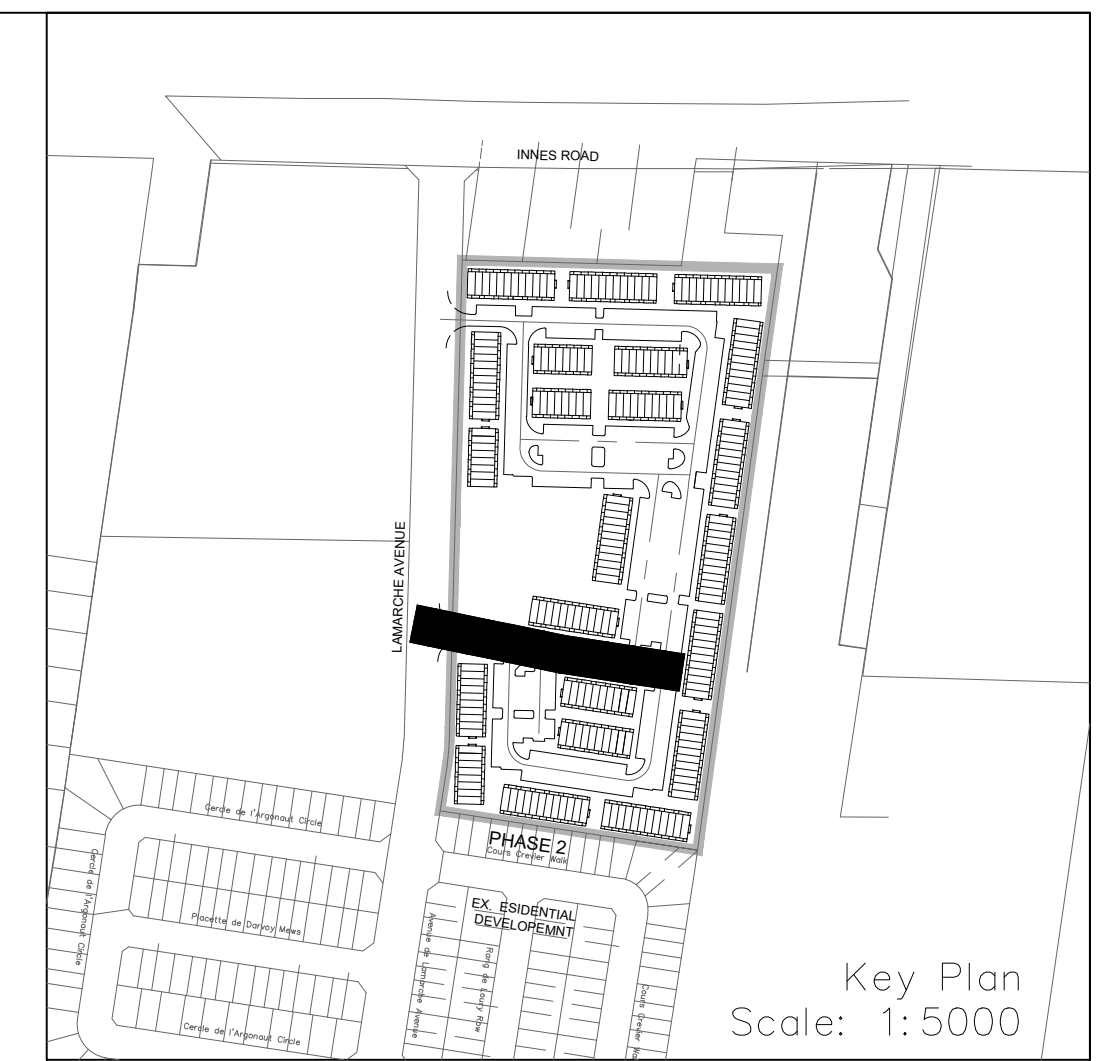
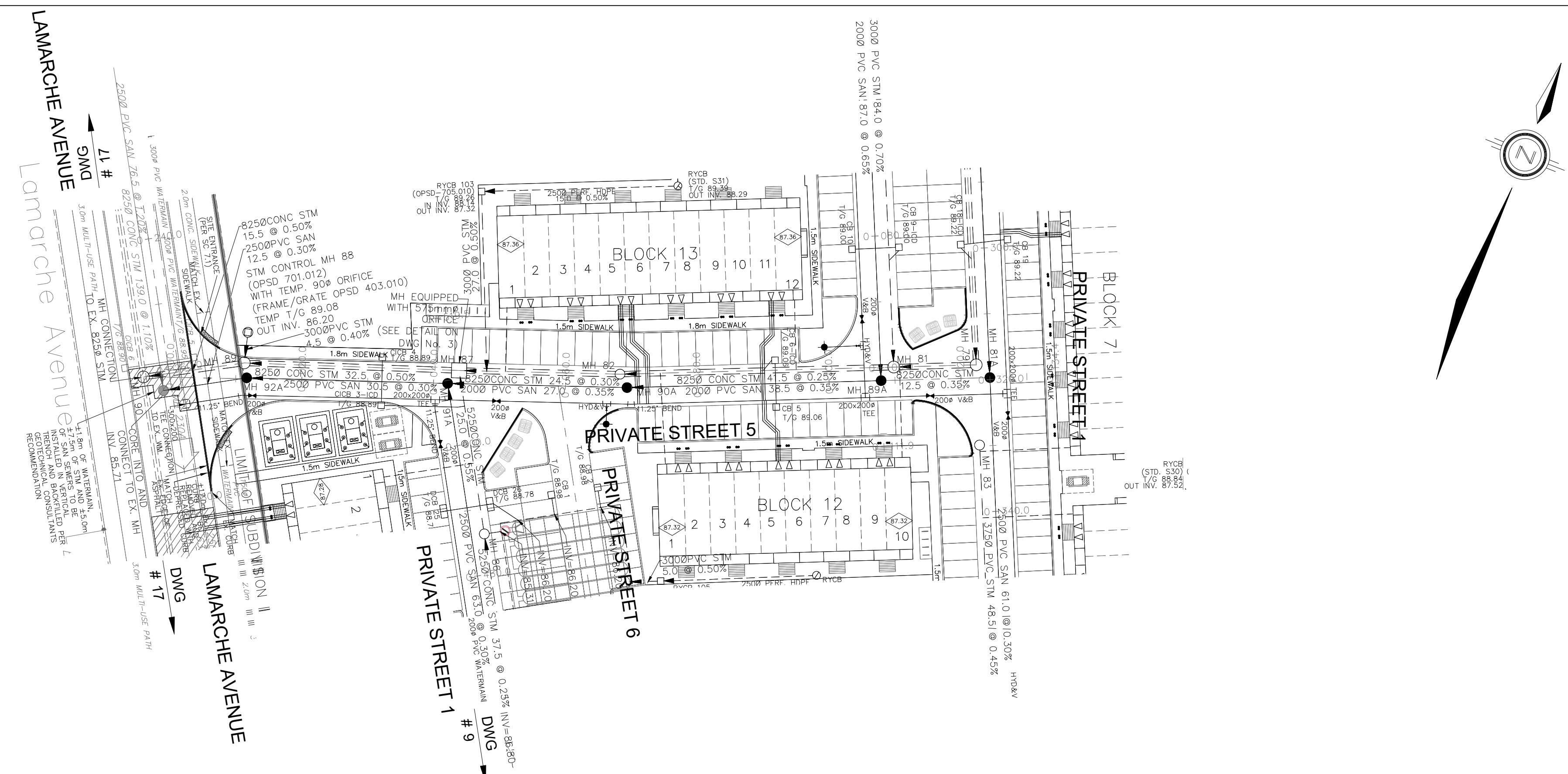


NOTES:

1. ANY DISTURBED AREA DURING CONSTRUCTION TO BE RESTORED TO THE ORIGINAL CONDITION OR BETTER TO THE SATISFACTION OF THE AUTHORITIES HAVING JURISDICTION. CONTRACTOR TO VERIFY THE PRECISE LOCATIONS AND INVERT ELEVATIONS OF EX. UNDERGROUND SERVICES AND EX. UTILITIES PRIOR TO STARTING CONSTRUCTION.
2. ALL EXISTING TREES, SHRUBS ETC. WITHIN LOTS, BLOCKS AND ROADS TO BE REMOVED, UNLESS OTHERWISE NOTED.
3. PERMISSION REQUIRED FOR WORK ON ADJACENT LANDS.
4. FOR WATERMAIN STUBS, 2.4m MIN. COVER TO BE PROVIDED.
5. ANY DISTURBED MATERIAL ENCOUNTERED BELOW THE SUBGRADE LEVEL WITHIN A BUILDING FOOTPRINT TO BE SUB-EXCAVATED AND BACKFILLED WITH COMPACTED ENGINEERED FILL AS PER GEOTECHNICAL ENGINEERS RECOMMENDATION.
6. FOR CATCHBASIN DATA, REFER TO DWG. No. 2 FOR DETAILS.
7. ALL DWELLINGS TO BE PROVIDED WITH PRESSURE REDUCING VALVES UNLESS OTHERWISE NOTED.



LEGEND

CROSS	BIKE RACK	EARTHEN (DWG. 3 FOR DETAILS)
45° BEND	STREET LIGHT STANDARD	CONCRETE SIDEWALK
LATERAL	CURB & RECESSED CURB	ASPHALT SIDEWALK
HYDRANT, VALVE & VB	CHAINLINK FENCE (1.5m UNLESS OTHERWISE NOTED)	NOISE BARRIER (2.2m)
TEE	WOODEN POST AND RAIL FENCE	CONSTRUCTION FENCE
VALVE & VC	POST AND RAIL FENCE	PROPERTY BOUNDARY
VALVE & VB	PHASING LIMITS	BOREHOLE (BH)
22.5° BEND	REDUCER	TEST PIT (TP)
11.25° BEND	SANITARY MAINTENANCE HOLE	AUGER HOLE (AH)
CAP	STREET CATCHBASIN & LEAD	MONITORING WELL LOCATION
STREET CATCHBASIN & LEAD	STREET CATCHBASIN WITH CLOSED LID & LEAD	CONCEPTUAL WELL LOCATION
STORM MAINTENANCE HOLE	CURB INLET CATCHBASIN & LEAD	TOP OF FOUNDATION ELEVATION
CURB INLET CATCHBASIN & LEAD	CATCHBASIN/ MAINTENANCE HOLE	FINISHED FLOOR ELEVATION
CATCHBASIN/ MAINTENANCE HOLE	INTERCONNECTED	UNDERSIDE OF FOOTING ELEVATION
WALK-OUT UNITS	CATCH BASIN & LEADS	NUMBER OF RISERS
SLAB ON GRADE	CAP	UNITS REQUIRING PRESSURE REDUCING VALVES
OVERLAND FLOW DIRECTION	CURB STOP	WALK-OUT UNITS
EXTERNAL OVERLAND FLOW DIRECTION	SINGLE SERVICE LOCATION (ST, SAN & WM)	EMERGENCY OVERLAND FLOW DIRECTION
TACTILE WALKING SURFACE INDICATOR (AS PER CITY OF OTTAWA STD. SC6, SC7, SC7.1, SC7.2, SC7.3)	PERFORATED PIPE	PREVIOUS PHASES
ELBOW CATCHBASIN DITCH AND CULVERT	ELBOW CATCHBASIN	EXISTING SANITARY MAINTENANCE HOLE
EXISTING SANITARY MAINTENANCE HOLE	DITCH AND CULVERT	EXISTING STORM MAINTENANCE HOLE
EXISTING STORM MAINTENANCE HOLE	HYDRO TRANSFORMER	GROUNDWATER LEVEL PER PATERNON GROUP DWG. P0009-10
RETAINING WALL (SEE NOTES ON DWG. 1 AND STRUCTURAL DWG'S FOR DETAIL)		

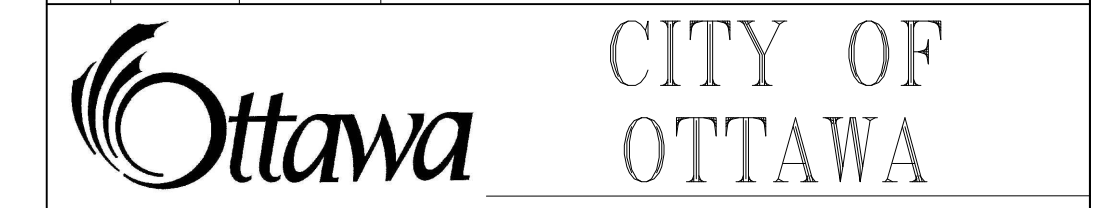
NOT FOR CONSTRUCTION

TOPOGRAPHIC INFORMATION
 TOPOGRAPHIC INFORMATION PROVIDED BY J.D. BARNES LIMITED
 PROJECT No. 16-10-116-00, SURVEYS DATED NOVEMBER 30, 2017.
 PROJECT No. 16-10-116-00_P2, SURVEYS DATED SEPTEMBER 27, 2019.
 PROJECT No. 22-10-030-01, SURVEYS DATED JUNE 21, 2023.

SITE PLAN INFORMATION
 SITE PLAN PROVIDED BY Q4 ARCHITECTS, DATED ON AUGUST 6, 2024.

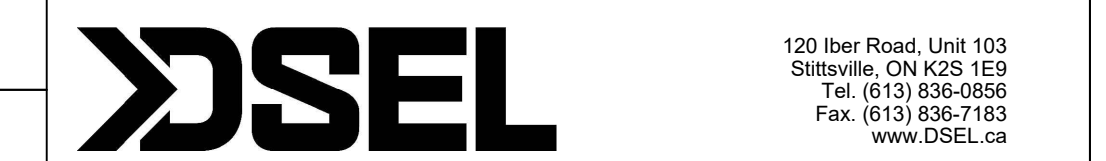
ELEVATION NOTE
 ELEVATIONS ARE GEODETIC AND ARE DERIVED FROM SITE BENCHMARK NCC CONTROL POINT 001196530229.
 ELEVATION = 86.12 m

No.	BY	DATE	DESCRIPTION
1	S.L.M.	2024-08-30	1st SUBMISSION



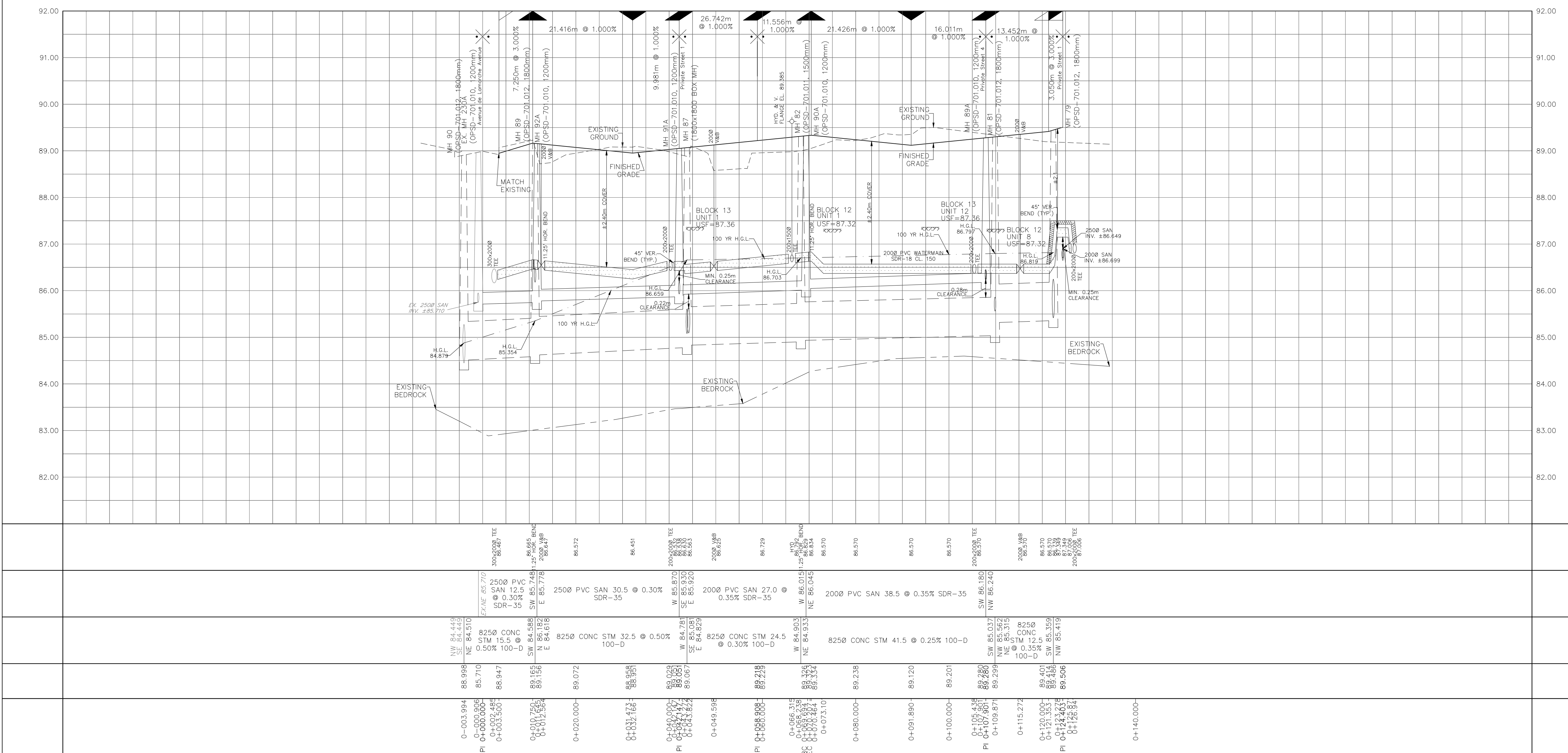
PROJECT No. 24-1403

CAIVAN (ORLEANS VILLAGE 2) LTD. ORLEANS VILLAGE PHASE 4



Private Street 5
 STA. 0+10.000 TO STA. 0+134.403

DRAWN BY: C.P.B.	CHECKED BY: S.L.M.	SHEET No. 13 OF 25
DESIGNED BY: C.P.B.	CHECKED BY: S.L.M.	
SCALE: 1:500	DATE: AUGUST 2024	



CITY PLAN No. ### CITY FILE No. ###