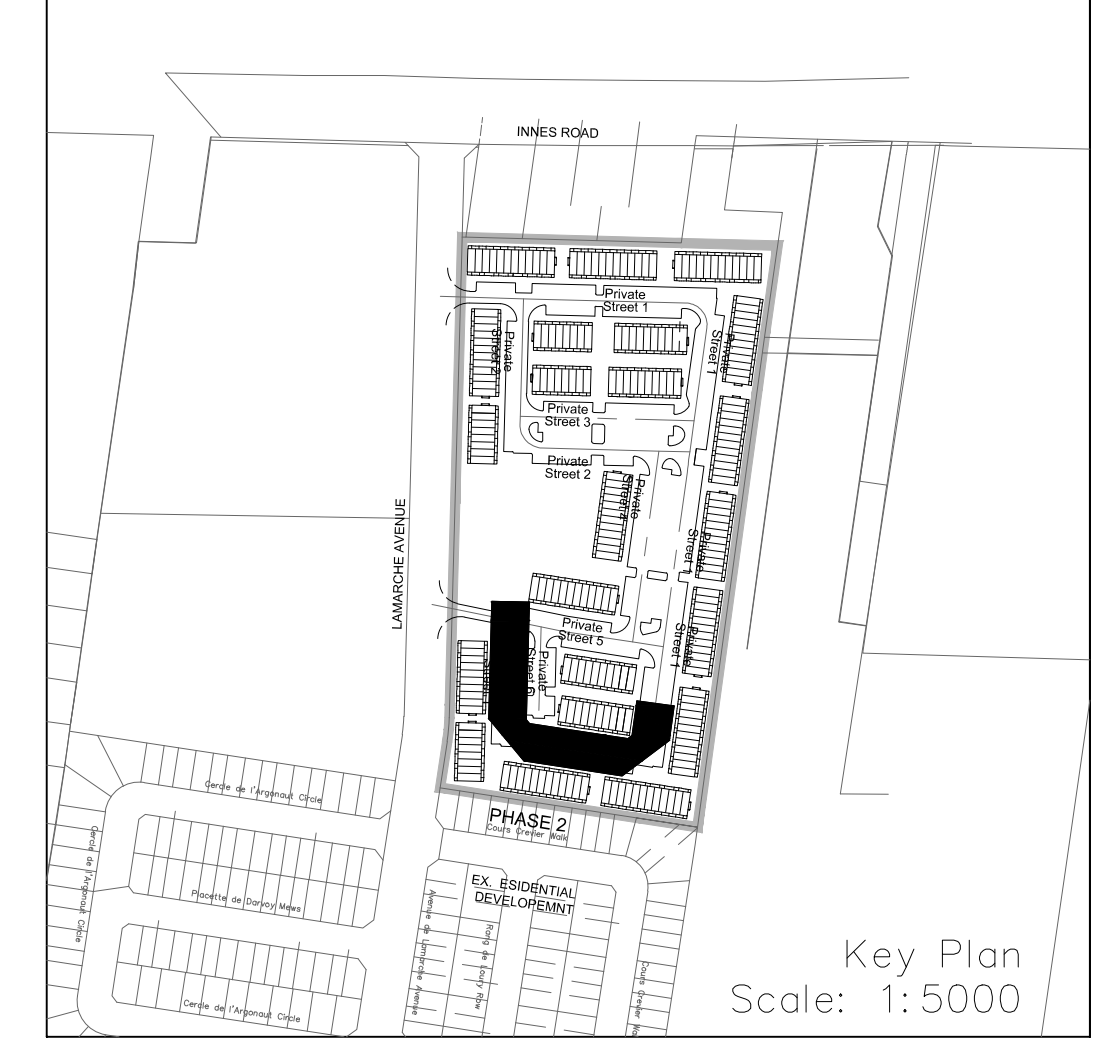
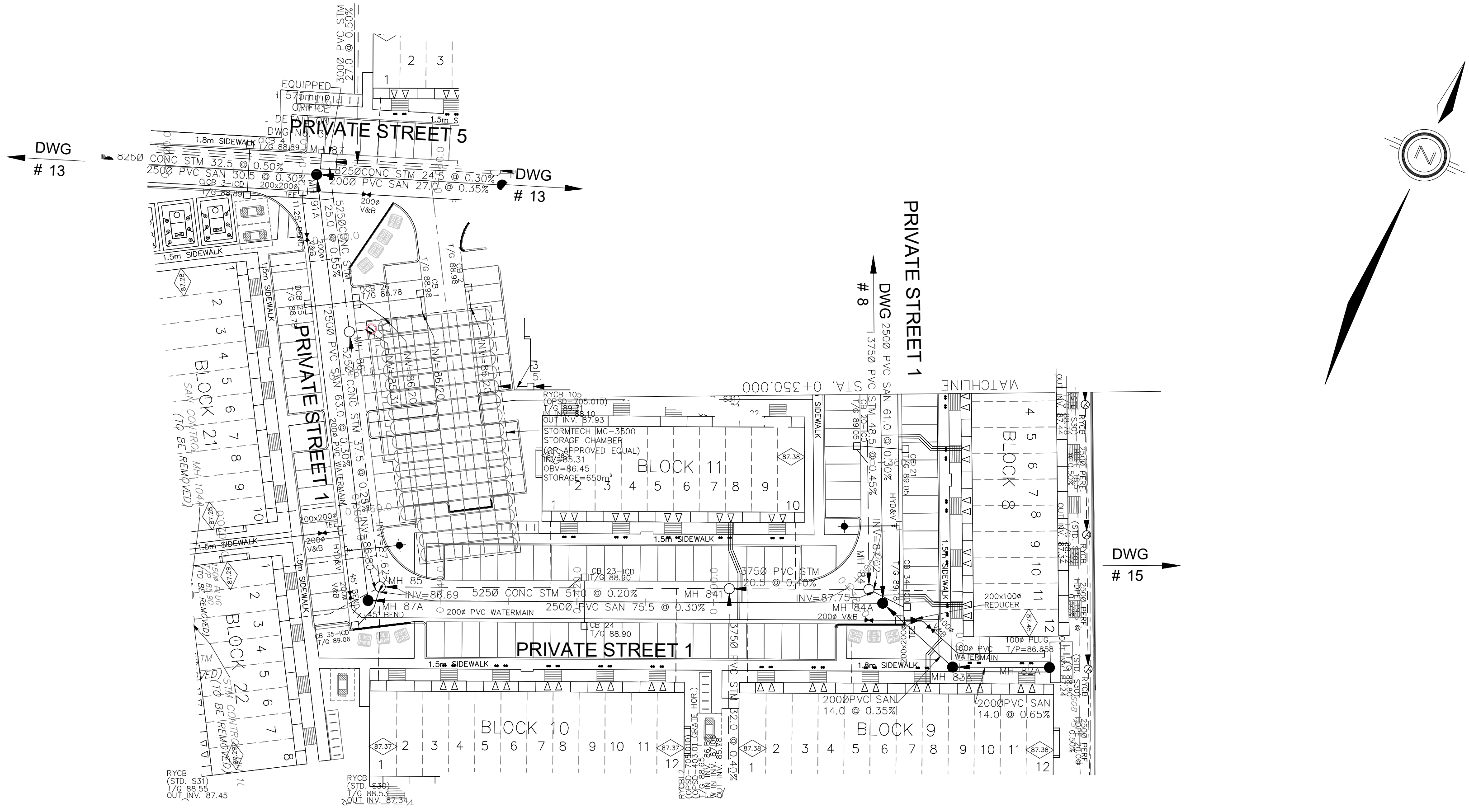


NOTES:

1. ANY DISTURBED AREA DURING CONSTRUCTION TO BE RESTORED TO THE ORIGINAL CONDITION OR BETTER TO THE SATISFACTION OF THE AUTHORITIES HAVING JURISDICTION. CONTRACTOR TO VERIFY THE PRECISE LOCATIONS AND INVERT ELEVATIONS OF EX. UNDERGROUND SERVICES AND EX. UTILITIES PRIOR TO STARTING CONSTRUCTION.
2. ALL EXISTING TREES, SHRUBS ETC. WITHIN LOTS, BLOCKS AND ROADS TO BE REMOVED, UNLESS OTHERWISE NOTED.
3. PERMISSION REQUIRED FOR WORK ON ADJACENT LANDS.
4. FOR WATERMAIN STUBS, 2.4m MIN. COVER TO BE PROVIDED.
5. ANY DISTURBED MATERIAL ENCOUNTERED BELOW THE SUBGRADE LEVEL WITHIN A BUILDING FOOTPRINT TO BE SUB-EXCAVATED AND BACKFILLED WITH COMPACTED ENGINEERED FILL AS PER GEOTECHNICAL ENGINEERS RECOMMENDATION.
6. FOR CATCHBASIN DATA, REFER TO DWG. No. 2 FOR DETAILS.
7. ALL DWELLINGS TO BE PROVIDED WITH PRESSURE REDUCING VALVES UNLESS OTHERWISE NOTED.



LEGEND

CROSS	BIKE RACK	EARTHEN (DWG. 3 FOR DETAILS)
45° BEND	CONCRETE SIDEWALK	STREET LIGHT STANDARD
LATERAL	CURB & RECESSED CURB	HYDRANT, VALVE & VB
VALVE & VC	ASPHALT SIDEWALK	WOODEN POST
VALVE & VB	CHAINLINK FENCE (1.5m UNLESS OTHERWISE NOTED)	NOISE BARRIER (2.2m)
22.5° BEND	CONSTRUCTION FENCE	POST AND RAIL FENCE
11.25° BEND	PHASING LIMITS	PROPERTY BOUNDARY
REDUCER	BOREROLE (BO)	TEST PIT (TP)
CAP	AUGER HOLE (AH)	MONITORING WELL LOCATION
SANITARY MAINTENANCE HOLE	CONCEPTUAL WELL LOCATION	TOP OF FOUNDATION ELEVATION
CAP	FINISHED FLOOR ELEVATION	UNDERSIDE OF FOOTING ELEVATION
STREET CATCHBASIN & LEAD	NUMBER OF RISERS	UNITS REQUIRING PRESSURE REDUCING VALVES
INTERCONNECTED	WALK-OUT UNITS	SLAB ON GRADE
CATCH BASIN & LEADS	OVERLAND FLOW DIRECTION	EXTERNAL OVERLAND FLOW DIRECTION
CAP	EMERGENCY OVERLAND FLOW DIRECTION	TACTILE WALKING SURFACE INDICATOR (AS PER CITY OF OTTAWA STD. SC6, SC7, SC7.1, SC7.2, SC7.3)
CURB STOP	PREVIOUS PHASES	EXISTING SANITARY MAINTENANCE HOLE
SINGLE SERVICE LOCATION (ST, SAN & WM)		EXISTING STORM MAINTENANCE HOLE
TEE		GROUNDWATER LEVEL PER PATERNSON GROUP DWG. P0009-10
PERFORATED PIPE		
ELBOW CATCHBASIN		
DITCH AND CULVERT		
36.0m-250* INFILTRATION TRENCH (TYP.), SEE DETAIL ON DRAWING 4.		
HYDRO TRANSFORMER		
RETAINING WALL (SEE NOTES ON DWG. 1 AND STRUCTURAL DWG'S FOR DETAIL)		

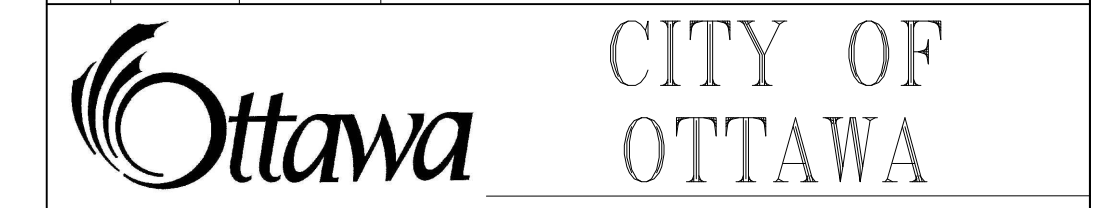
NOT FOR CONSTRUCTION

TOPOGRAPHIC INFORMATION
 TOPOGRAPHIC INFORMATION PROVIDED BY J.D. BARNES LIMITED
 PROJECT No. 16-10-116-00, SURVEYS DATED NOVEMBER 30, 2017.
 PROJECT No. 16-10-116-00_PH2, SURVEYS DATED SEPTEMBER 27, 2019.
 PROJECT No. 22-10-030-01, SURVEYS DATED JUNE 21, 2023.

SITE PLAN INFORMATION
 SITE PLAN PROVIDED BY Q4 ARCHITECTS, DATED ON AUGUST 6, 2024.

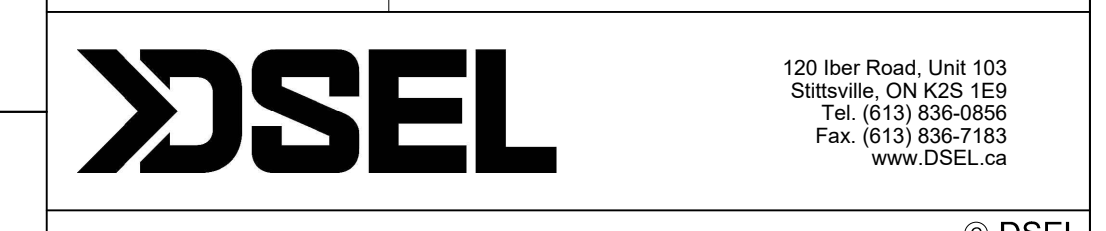
ELEVATION NOTE
 ELEVATIONS ARE GEODETIC AND ARE DERIVED FROM SITE BENCHMARK NCC CONTROL POINT 001196530229.
ELEVATION = 86.12 m

1	S.L.M.	2024-08-30	1st SUBMISSION
---	--------	------------	----------------



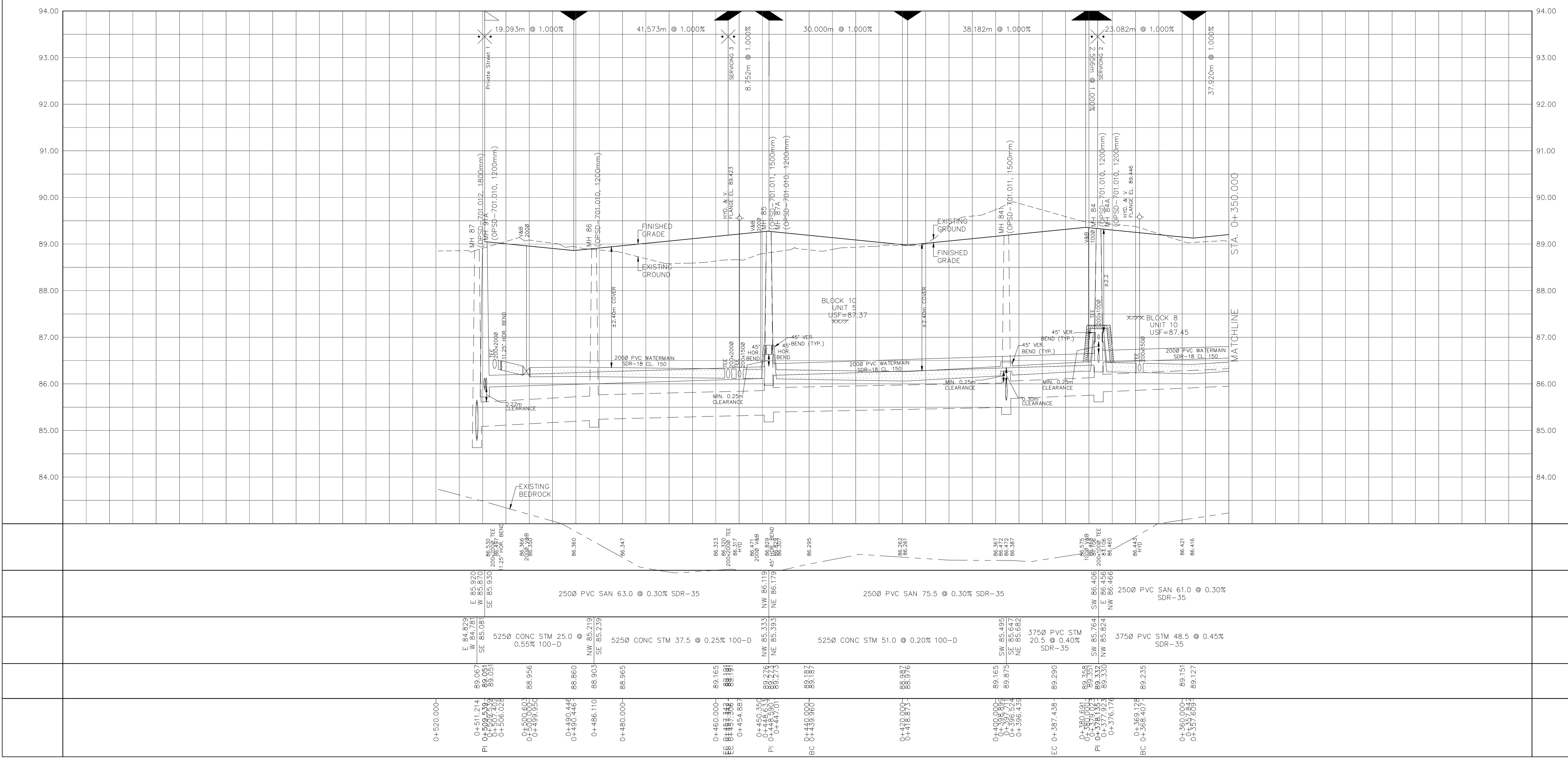
PROJECT No. 24-1403

CAIVAN (ORLEANS VILLAGE 2) LTD. ORLEANS VILLAGE PHASE 4



Private Street 1 © DSEL
 STA. 0+350.000 TO STA. 0+519.539

DRAWN BY: C.P.B.	CHECKED BY: S.L.M.	SHEET NO. 9 OF 25
DESIGNED BY: C.P.B.	CHECKED BY: S.L.M.	
SCALE: 1:500	DATE: AUGUST 2024	



CITY PLAN No. ###
CITY FILE No. ###