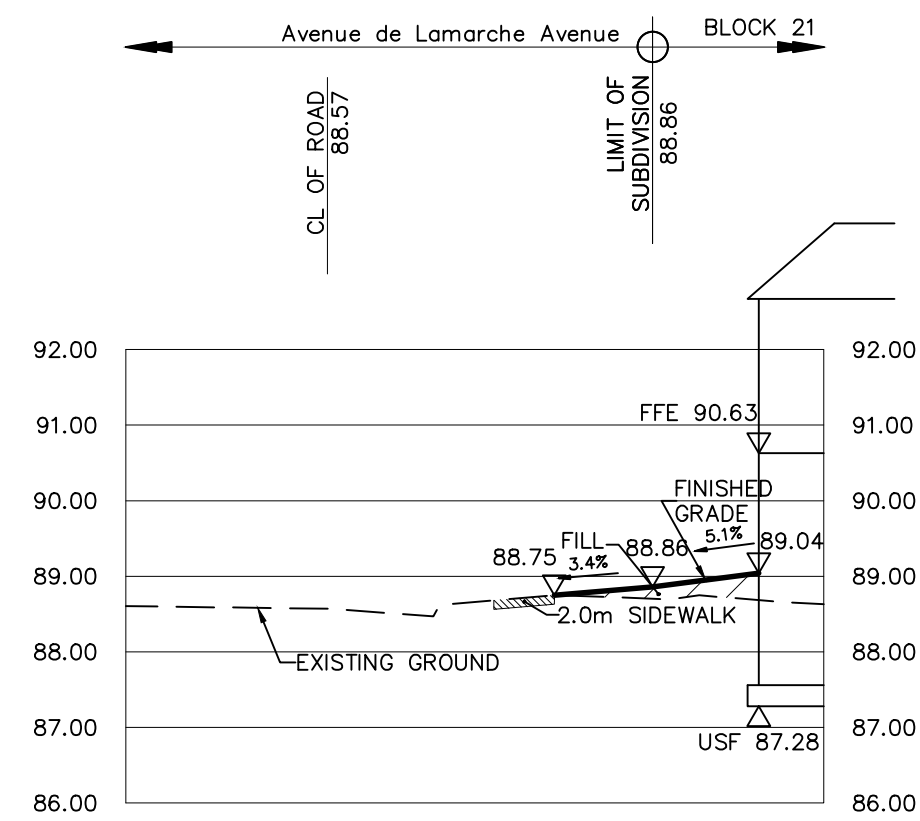


SECTION 1-1

SCALE HOR. 1:100

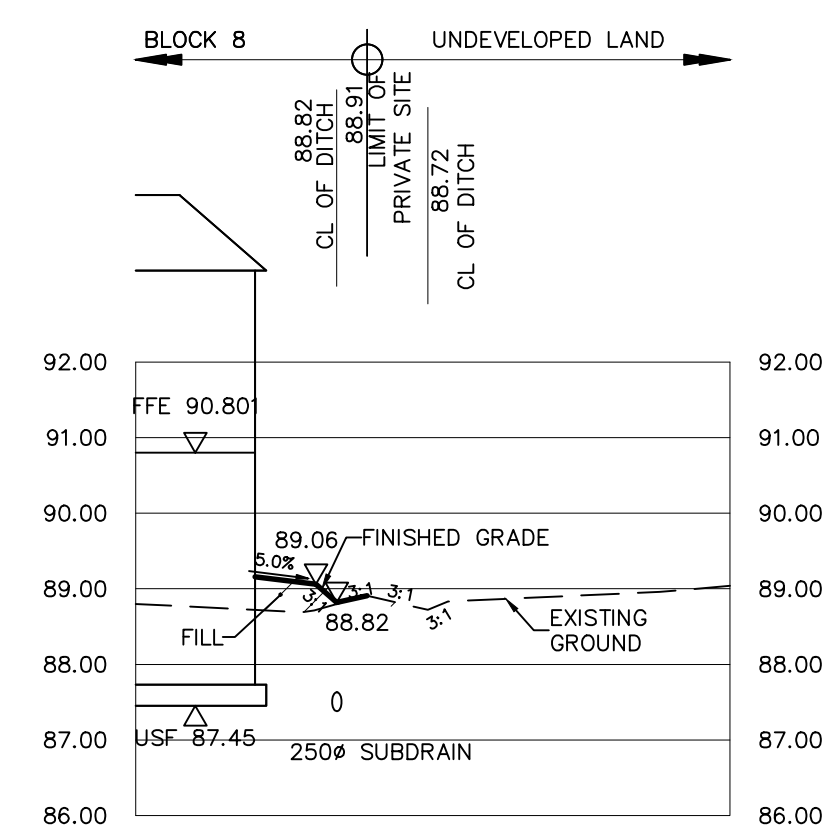
VER. 1:250



SECTION 3-3

SCALE HOR. 1:100

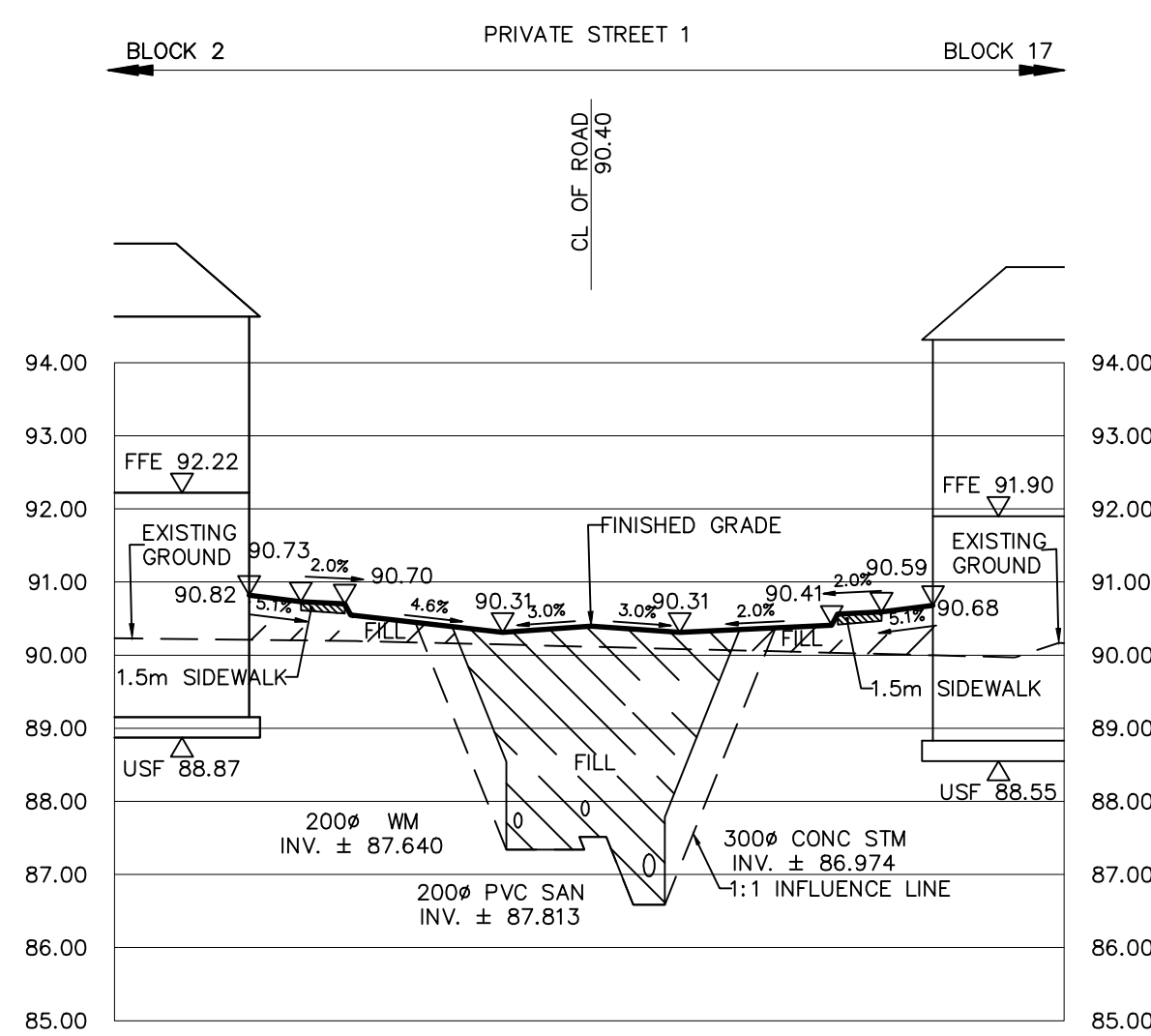
VER. 1:250



SECTION 2-2

SCALE HOR. 1:100

VER. 1:250



SECTION 4-4

SCALE HOR. 1:100

VER. 1:250

NOTE:
REFER TO GRADING PLAN FOR
CROSS SECTION LOCATIONS

NOT FOR CONSTRUCTION

TOPOGRAPHIC INFORMATION
TOPOGRAPHIC INFORMATION PROVIDED BY J.D. BARNES LIMITED
PROJECT No. 16-10-116-00, SURVEYS DATED NOVEMBER 30, 2017.
PROJECT No. 16-10-116-00_PH2, SURVEYS DATED SEPTEMBER 27, 2019.
PROJECT No. 22-10-030-01, SURVEYS DATED JUNE 21, 2023.

SITE PLAN INFORMATION
SITE PLAN PROVIDED BY Q4 ARCHITECTS, DATED ON AUGUST 6, 2024.

ELEVATION NOTE
ELEVATIONS ARE GEODETIC AND ARE DERIVED FROM SITE BENCHMARK NCC
CONTROL POINT 001196530229.
ELEVATION = 86.12 m

No.	BY	DATE	DESCRIPTION
1	S.L.M.	2024-08-30	1st SUBMISSION

No.	BY	DATE	DESCRIPTION



PROJECT No. 24-1403

CAIVAN (ORLEANS VILLAGE 2) LTD. ORLEANS VILLAGE PHASE 4



CROSS SECTIONS © DSEL

DRAWN BY: C.P.B.	CHECKED BY: S.L.M.	SHEET NO.
DESIGNED BY: C.P.B.	CHECKED BY: S.L.M.	21 OF 25
SCALE: AS SHOWN	DATE: AUGUST 2024	

CITY PLAN No. ###
CITY FILE No. ###