

SANITARY FORCEMAIN PROFILE TABLE

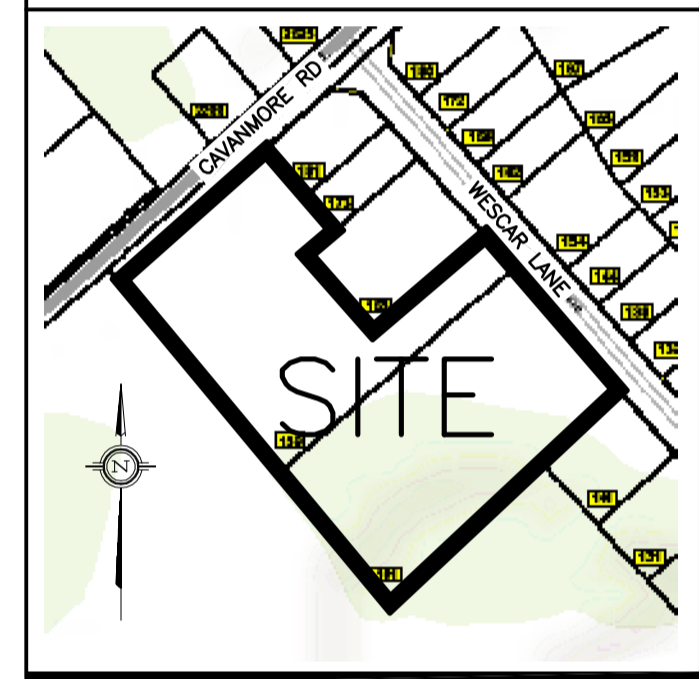
MATERIAL:
50mm PVC SDR 26 (IPEX CYLCETOUGH OR APPROVED EQUAL)

STATION	DESCRIPTION	GRADE ELEVATION	TOP OF PIPE	DEPTH OF COVER	NOTES
0+000.0	PUMP STATION	122.38	119.21	3.17	-
0+028.0	-	122.10	119.35	2.75	CROSSING 450 ST INV 120.85 FORCEMAIN TOP 119.35 1500mm CLEARANCE
0+066.1	-	122.09	119.49	2.60	CROSSING 450 ST INV 120.95 FORCEMAIN TOP 119.49 1460mm CLEARANCE
0+081.0	-	122.18	119.70	2.48	CROSSING 250 WM TOP 119.50 FORCEMAIN U/S 119.65 150mm CLEARANCE
0+083.4	-	122.10	119.70	2.40	CROSSING 250 ST INV 121.12 FORCEMAIN TOP 119.63 1490mm CLEARANCE
0+113.5	-	122.26	119.78	2.48	-
0+126.8	-	122.39	119.84	2.55	-
0+157.9	-	122.71	120.00	2.71	START OF 125mm THICK, 3.0m WIDE INSULATION AS PER DETAIL ON C-13
0+160.9	-	122.66	121.56	1.10	END OF 125mm THICK, 3.0m WIDE INSULATION AS PER DETAIL ON C-13

LEGEND

- FFL FINISHED FLOOR ELEVATION
- USF UNDERSIDE OF FOOTING
- PROPERTY LINE
- CB CATCH-BASIN
- MH STORM MANHOLE
- CB/MH CATCH-BASIN/MANHOLE
- SAN SANITARY SEWER
- SAN SANITARY FORCEMAIN
- ST STORM SEWER
- WL/WM WELL WATER LINE/WATERMAIN
- SPL SPRINGLINE OF PIPE
- INV INVERT OF PIPE
- T.O.S. TOP OF SLOPE
- B.O.S. BOTTOM OF SLOPE
- CENTERLINE OF SWALE
- ===== 150mm BARRIER CURB

KEY PLAN



No.	DATE	REVISION
5	AUG 22-24	RE-ISSUED FOR APPROVAL
4	JUL 10-24	ISSUED FOR BUILDING PERMIT
3	DEC 13-23	RE-ISSUED FOR APPROVAL
2	AUG 31-23	ISSUED FOR APPROVAL
1	AUG 16-23	ISSUED FOR COORDINATION

D. B. GRAY ENGINEERING INC.

Stormwater Management - Grading & Drainage - Storm & Sanitary Sewers - Watermain
700 Long Point Circle 613-425-8044
Ottawa, Ontario d.gray@dbgrayengineering.com

Project

SUNBELT RENTALS INC. -
EQUIPMENT MAINTENANCE
FACILITY
CARP, ONTARIO

Drawing Title

SANITARY FORCEMAIN
PROFILE TABLE

	Drawn D.B.G.
	H. Scale 1:500
	V. Scale
	Date AUG 16-23
Job No. 22111	
Drawing No. C-9 of 17	

REFER TO NOTES, DETAILS & SCHEDULES
ON DRAWINGS C-7, C-8, C-13 & C-14