

INSULATE SEWER AS INDICATED.
CENTER INSULATION OVER PIPE.
JOINTS BETWEEN SHEETS OF INSULATION SHALL BE STAGGERED.

**INSULATION OF WATER PIPES
AT OPEN STRUCTURES**
AS PER CITY OF OTTAWA DRAWING No. W23
N.T.S

REFER TO NOTES, DETAILS & SCHEDULES
ON DRAWINGS C-8, C-9, C-13 & C-14

WATERMAIN PROFILE TABLE

DIAMETER/MATERIAL: 250mm/PVC DR25

STATION	DESCRIPTION	GRADE ELEVATION	TOP OF PIPE	DEPTH OF COVER	NOTES
A+00.0	WATER FILL STATION	122.45	118.95	3.50	-
A+00.6	45° HORIZONTAL BEND TO CITY OF OTTAWA STANDARDS	122.45	118.95	3.50	-
A+01.6	22.5° VERTICAL BEND UP TO CITY OF OTTAWA STANDARDS	122.45	118.95	3.50	-
A+03.9	22.5° VERTICAL BEND DOWN TO CITY OF OTTAWA STANDARDS	122.39	119.90	2.49	-
A+10.9	22.5° HORIZONTAL BEND TO CITY OF OTTAWA STANDARDS	122.30	119.90	2.40	CROSSING 450 ST U/S 120.97 WM TOP 119.90 - 1070mm CLEARANCE (MIN. 500mm REQ'D)
A+15.0 (B+00.0)	200 TO 150 REDUCER	122.34	119.90	2.44	-

DIAMETER/MATERIAL: 250mm/PVC DR25

STATION	DESCRIPTION	GRADE ELEVATION	TOP OF PIPE	DEPTH OF COVER	NOTES
B+00.0 (A+15.0)	200 TO 150 REDUCER	122.34	119.90	2.44	-
B+01.0	FH-2 - FIRE HYDRANT TO AWWA C-502 & CITY OF OTTAWA STANDARDS	122.35	119.90	2.45	-

DIAMETER/MATERIAL: 250mm/PVC DR25

STATION	DESCRIPTION	GRADE ELEVATION	TOP OF PIPE	DEPTH OF COVER	NOTES
C+000.0	WATER FILL STATION	122.43	118.93	3.50	-
C+0006	45° HORIZONTAL BEND TO CITY OF OTTAWA STANDARDS	122.41	118.93	3.48	-
C+002.7	-	122.39	118.93	3.46	CROSSING 450 ST U/S 120.94 WM TOP 119.18 - 1760mm CLEARANCE (MIN. 500mm REQ'D)
C+003.7	22.5° VERTICAL BEND UP TO CITY OF OTTAWA STANDARDS	122.39	118.93	3.46	-
C+005.1	22.5° VERTICAL BEND DOWN TO CITY OF OTTAWA STANDARDS	122.35	119.50	2.85	-
C+011.2	-	122.24	119.50	2.74	CROSSING 250 ST INV 121.15 WM TOP 119.50 - 1650mm CLEARANCE (MIN. 500mm REQ'D)
C+015.0	-	122.18	119.50	2.68	CROSSING 50 SAN FORCEMAIN U/S 119.65 WM TOP 119.50 150mm CLEARANCE
C+017.2	22.5° HORIZONTAL BEND TO CITY OF OTTAWA STANDARDS	122.15	119.50	2.65	-
C+054.0	-	122.15	119.75	2.40	-
C+090.7	-	122.07	119.67	2.40	CROSSING 375 ST INV 120.84 WM TOP 119.67 - 1170mm CLEARANCE (MIN. 500mm REQ'D)
C+101.7	-	122.18	119.78	2.40	BOTTOM OF CURB
C+104.3 (D+00.0)	250 TO 150 REDUCER	122.34	119.78	2.56	-

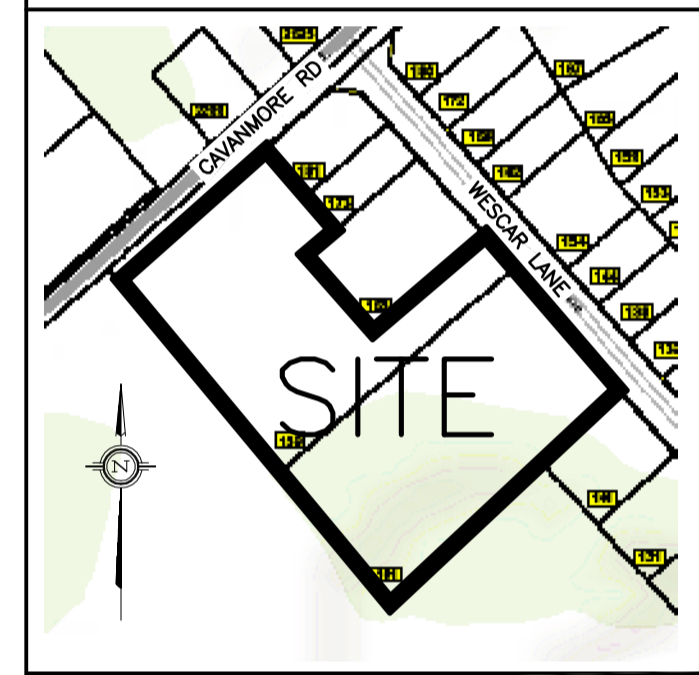
DIAMETER/MATERIAL: 150mm/PVC DR25

STATION	DESCRIPTION	GRADE ELEVATION	TOP OF PIPE	DEPTH OF COVER	NOTES
D+00.0 (C+104.3)	250 TO 150 REDUCER	122.34	119.78	2.56	-
D+01.0	FH-3 - FIRE HYDRANT TO CITY OF OTTAWA STANDARDS	122.35	119.78	2.57	-

LEGEND

- FFL FINISHED FLOOR ELEVATION
- USF UNDERSIDE OF FOOTING
- PROPERTY LINE
- CB [] CATCH-BASIN
- MH () STORM MANHOLE
- CB/MH () CATCH-BASIN/MANHOLE
- SAN --- SANITARY SEWER
- SAN --- SANITARY FORCEMAIN
- ST --- STORM SEWER
- WL/WM --- WELL WATER LINE/WATERMAIN
- SPL SPRINGLINE OF PIPE
- INV INVERT OF PIPE
- T.O.S --- TOP OF SLOPE
- B.O.S --- BOTTOM OF SLOPE
- CENTERLINE OF SWALE
- ===== 150mm BARRIER CURB

KEY PLAN



No.	DATE	REVISION
6	AUG 22-24	RE-ISSUED FOR APPROVAL
5	AUG 19-24	ISSUED TO OFS FOR APPROVAL OF FIRE TANKS & FHS LOCATION
4	JUL 10-24	ISSUED FOR BUILDING PERMIT
3	DEC 13-23	RE-ISSUED FOR APPROVAL
2	AUG 31-23	ISSUED FOR APPROVAL
1	AUG 16-23	ISSUED FOR COORDINATION

D. B. GRAY ENGINEERING INC.

Stormwater Management - Grading & Drainage - Storm & Sanitary Sewers - Watermain
700 Long Point Circle
Ottawa, Ontario
613-425-8044
d.gray@dbgrayengineering.com

Project
**SUNBELT RENTALS INC. -
EQUIPMENT MAINTENANCE
FACILITY**
CARP, ONTARIO

WATER PROFILE TABLE (LINE A, B, C & D)

Engineer's Seal

 D.B. GRAY
17016502
AUG 22-24
PROVINCE OF ONTARIO
NOT VALID UNLESS SIGNED & DATED

Drawn: D.B.G.
H. Scale: 1:250
V. Scale:
Date: AUG 16-23
Job No.: 22111

Drawing No.
C-7
of 17