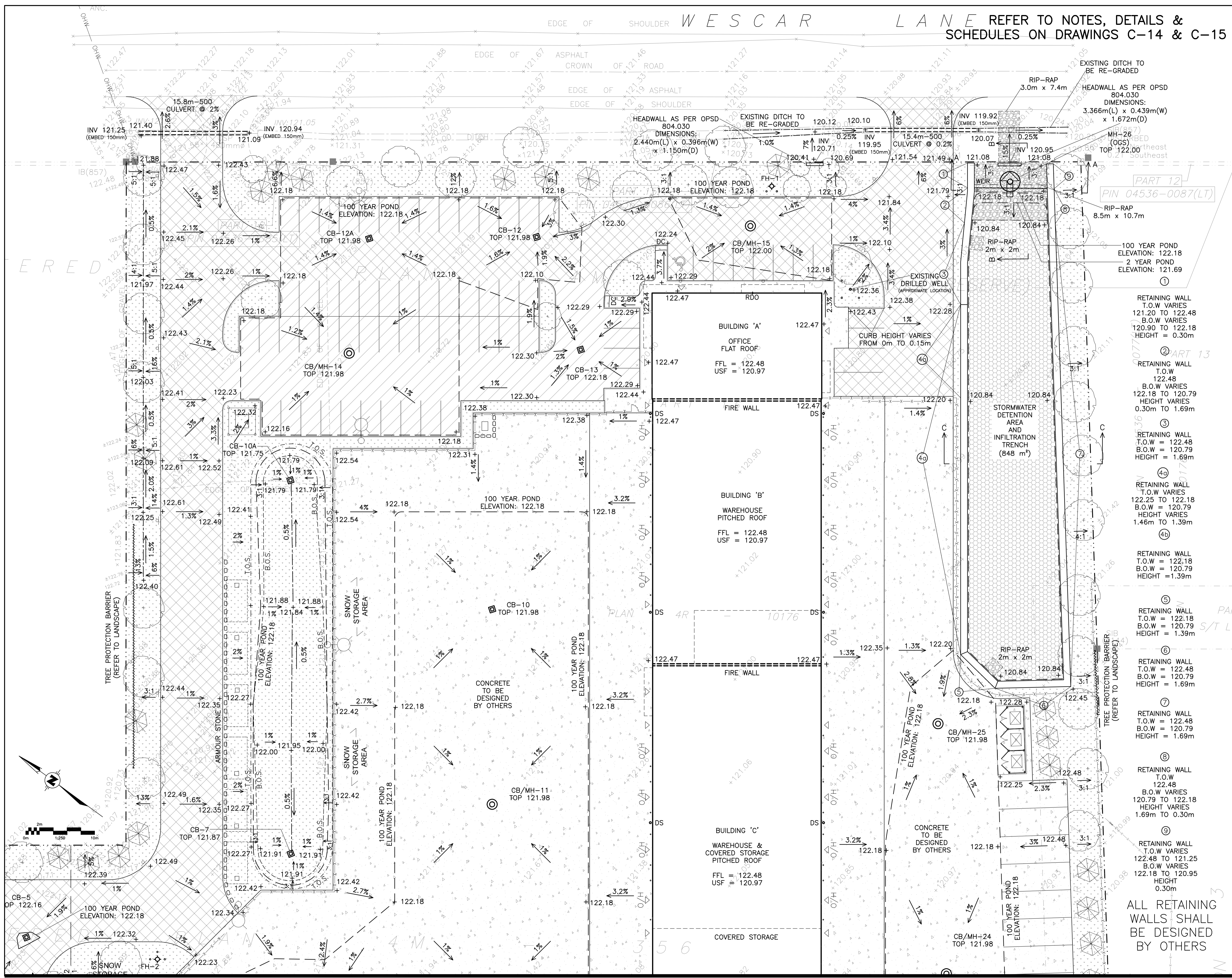
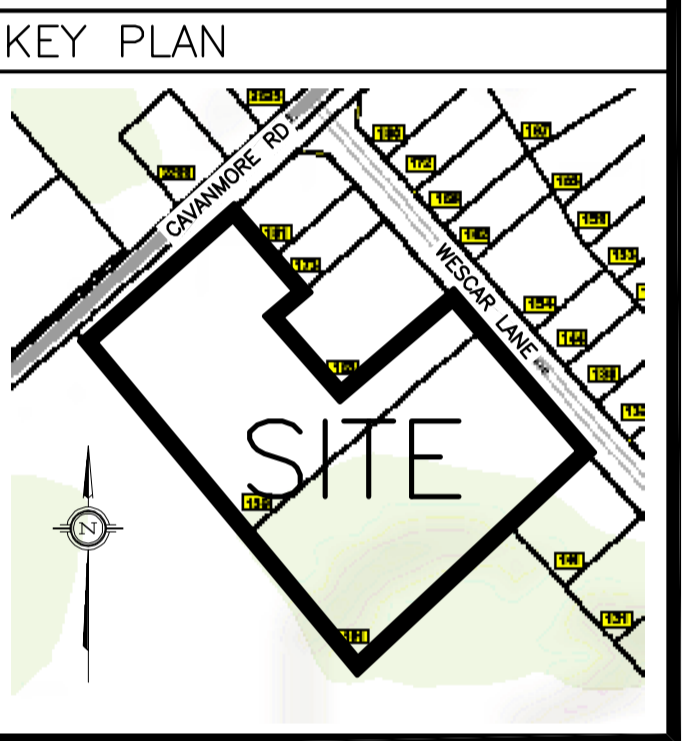


REFER TO NOTES, DETAILS & SCHEDULES ON DRAWINGS C-14 & C-15



**LEGEND**

- FFL FINISHED FLOOR ELEVATION
- USF UNDERSIDE OF FOOTING
- PROPERTY LINE
- CB CATCH-BASIN
- MH STORM MANHOLE
- CB/MH CATCH-BASIN/MANHOLE
- EXISTING GRADE ELEVATION
- +99.99 PROPOSED GRADE ELEVATION
- 2% EXISTING SLOPE OF GRADE
- 2% PROPOSED SLOPE OF GRADE
- EMERGENCY OVERLAND FLOW
- T.O.S. TOP OF SLOPE
- B.O.S. BOTTOM OF SLOPE
- CENTERLINE OF SWALE
- 150mm BARRIER CURB
- D.C. DEPRESSED CURB
- ..... SILT FENCE BARRIER
- /// LIGHT-DUTY PAVEMENT
- /// HEAVY-DUTY PAVEMENT
- CONCRETE
- LANDSCAPE



No.	DATE	REVISION
7	AUG 22-24	RE-ISSUED FOR APPROVAL
6	JUL 10-24	ISSUED FOR BUILDING PERMIT
5	DEC 13-23	RE-ISSUED FOR APPROVAL
4	AUG 31-23	ISSUED FOR APPROVAL
3	AUG 16-23	ISSUED FOR COORDINATION
2	JUL 17-23	ISSUED FOR COORDINATION
1	MAY 18-23	PRELIMINARY
No.	DATE	REVISION

**D. B. GRAY ENGINEERING INC.**  
 Stormwater Management - Grading & Drainage - Storm & Sanitary Sewers - Watermain  
 700 Long Point Circle  
 Ottawa, Ontario  
 613-425-8044  
 d.gray@dbgrayengineering.com

Project  
**SUNBELT RENTALS INC. - EQUIPMENT MAINTENANCE FACILITY**  
 CARP, ONTARIO

**GRADING PLAN (EAST AREA)**

Engineer's Seal  
  
 NOT VALID UNLESS SIGNED & DATED

Drawn D.B.G.  
 H. Scale 1:250  
 V. Scale  
 Date MAY 18-23  
 Job No. 22111

Drawing No.  
**C-10**  
 of 17

ALL RETAINING WALLS SHALL BE DESIGNED BY OTHERS