

LOT 16 (South Argyle Avenue) REGISTERED PLAN 30 CITY OF OTTAWA

Surveyed by Annis, O'Sullivan, Vollebakk Ltd.

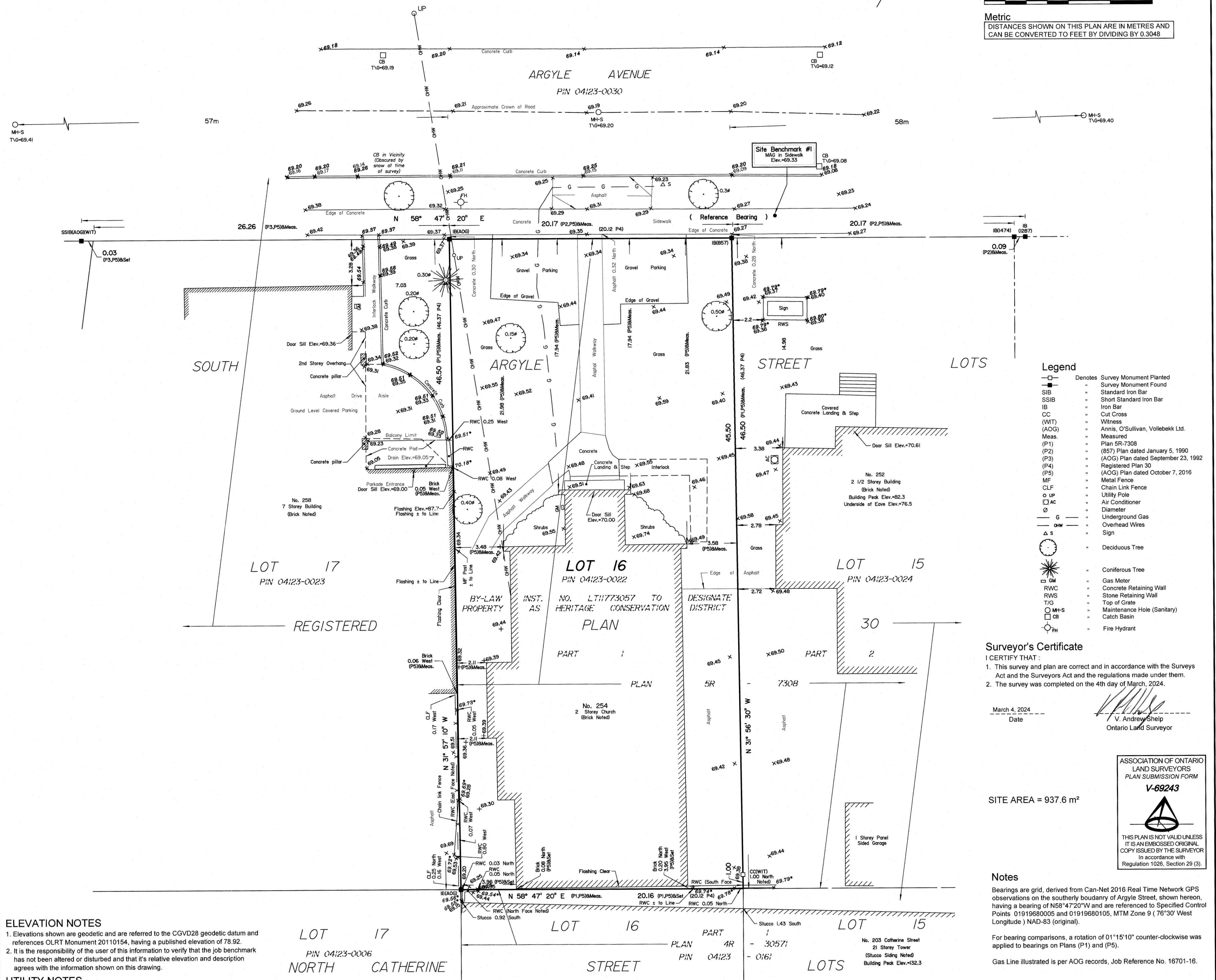
AMENDED November 15, 2024 to illustrate
benchmark MAG in sidewalk.

Scale 1 : 150

0 4.5 3.0 1.5 0 3 6 Metres

Metric

DISTANCES SHOWN ON THIS PLAN ARE IN METRES AND
CAN BE CONVERTED TO FEET BY DIVIDING BY 0.3048



ELEVATION NOTES

- Elevations shown are geodetic and are referred to the CGVD28 geodetic datum and references OLRT Monument 20110154, having a published elevation of 78.92.
- It is the responsibility of the user of this information to verify that the job benchmark has not been altered or disturbed and that its relative elevation and description agrees with the information shown on this drawing.

UTILITY NOTES

- This drawing cannot be accepted as acknowledging all of the utilities and it will be the responsibility of the user to contact the respective utility authorities for confirmation.
- Only visible surface utilities were located.
- A field location of underground plant by the pertinent utility authority is mandatory before any work involving breaking ground, probing, excavating etc.

Surveyor's Certificate

I CERTIFY THAT:

- This survey and plan are correct and in accordance with the Surveys Act and the Surveyors Act and the regulations made under them.
- The survey was completed on the 4th day of March, 2024.

March 4, 2024

Date

V. Andrew Shelp
Ontario Land Surveyor

SITE AREA = 937.6 m²

ASSOCIATION OF ONTARIO
LAND SURVEYORS
PLAN SUBMISSION FORM

V-69243



THIS PLAN IS NOT VALID UNLESS
IT IS AN EMBOSSED ORIGINAL
COPY ISSUED BY THE SURVEYOR
In accordance with
Regulation 1026, Section 29 (3).

Notes

Bearings are grid, derived from Can-Net 2016 Real Time Network GPS observations on the southerly boundary of Argyle Street, shown hereon, having a bearing of N58°47'20"W and are referenced to Specified Control Points 01919680005 and 01919680105, MTM Zone 9 (76°30' West Longitude) NAD-83 (original).

For bearing comparisons, a rotation of 01°15'10" counter-clockwise was applied to bearings on Plans (P1) and (P5).

Gas Line illustrated is per AOG records, Job Reference No. 16701-16.

Topographic data was collected under Winter Conditions.
Snow cover and ice preclude determining location and
elevation of some topographical data that is otherwise visible.

© Annis, O'Sullivan, Vollebakk Ltd. 2024. "THIS PLAN IS PROTECTED BY COPYRIGHT"
ANNIS, O'SULLIVAN, VOLLEBEKK LTD.
14 Concourse Gate, Suite 500
Nepean, Ont. K2E 7S6
Phone: (613) 727-0850 / Fax: (613) 727-1079
Email: Nepean@aovltd.com
Ontario
Land Surveyors Job No. 24710-24 Azure Urban Dev. L116 P80 0 F1 NS