

**LEGEND**

DRAINAGE AREA

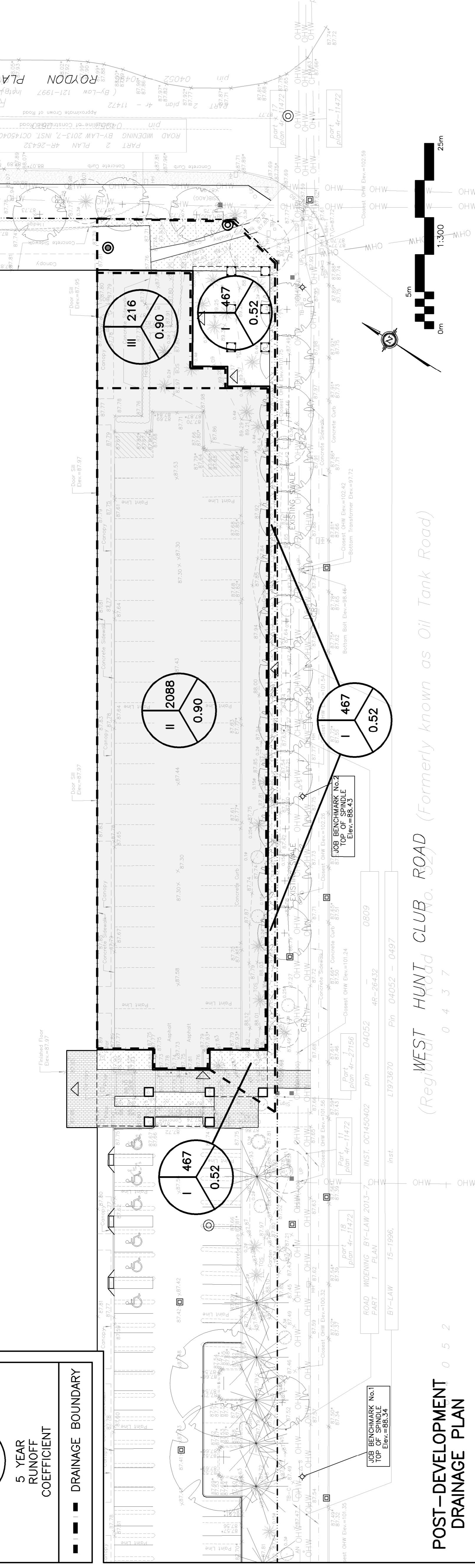
AREA (sq.m)

5 YEAR RUNOFF COEFFICIENT

DRAINAGE BOUNDARY

REFER TO NOTES & SCHEDULES ON DRAWING C-4

HALF OF LOT 29 CONCESSION "A" (RIDEAU FRONT) (NEPEAN)



POST-DEVELOPMENT DRAINAGE PLAN

**LEGEND**

FIRST FLOOR ELEVATION

TOP OF FOUNDATION

UNDERSIDE OF FOOTING

PROPERTY LINE

CRITICAL ROOT ZONE

CATCH BASIN

CURB INLET CATCH BASIN

STORM MANHOLE

CATCH-BASIN/MANHOLE

SANITARY MANHOLE

FIRE HYDRANT

FIRE DEPARTMENT CONNECTION

EXISTING GRADE ELEVATION

PROPOSED GRADE ELEVATION

EXISTING SLOPE OF GRADE

PROPOSED SLOPE OF GRADE

CENTRELINE OF SWALE

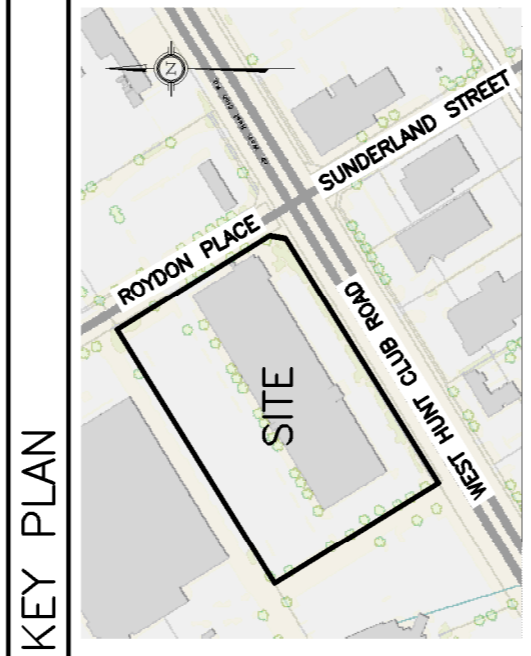
150mm BARRIER CURB

DEPRESSED CURB

SILT FENCE BARRIER

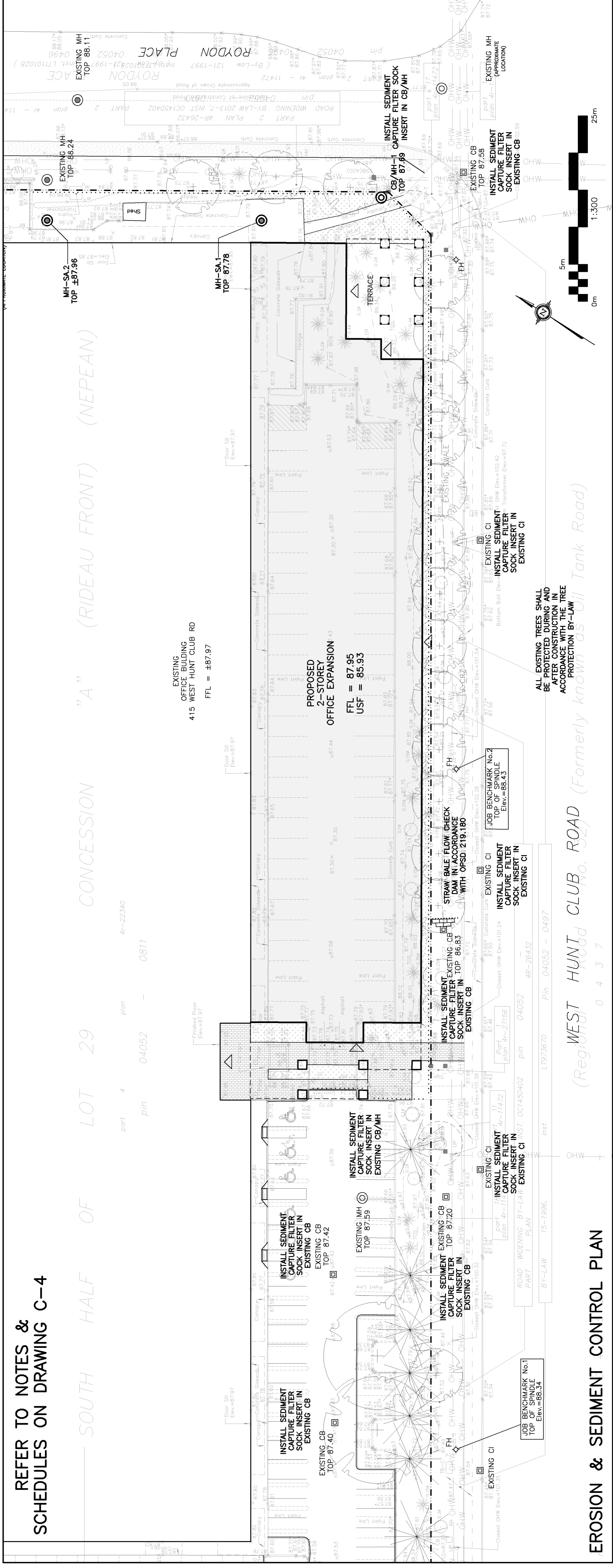
CONCRETE

LANDSCAPE



REFER TO NOTES & SCHEDULES ON DRAWING C-4

SOUTH HALF OF LOT 29 CONCESSION "A" (RIDEAU FRONT) (NEPEAN)



EROSION & SEDIMENT CONTROL PLAN

No.	DATE	REVISION
7	DEC 9-24	RE-ISSUED FOR APPROVAL
6	NOV 26-24	RE-ISSUED FOR APPROVAL
5	AUG 29-24	RE-ISSUED FOR APPROVAL
4	JUL 12-24	ISSUED FOR BUILDING PERMIT
3	JUN 19-24	RE-ISSUED FOR APPROVAL
2	DEC 21-23	ISSUED FOR APPROVAL
1	DEC 14-23	ISSUED FOR COORDINATION

**D. B. GRAY ENGINEERING INC.**  
 Professional Engineers & Architects  
 700 Long Point Circle  
 Ottawa, Ontario  
 613-425-8044  
 d.gray@dbgrayengineering.com

**PROPOSED 2-STORY OFFICE EXPANSION 415 WEST HUNT CLUB RD OTTAWA, ONTARIO**

**POST-DEVELOPMENT PLAN & EROSION AND SEDIMENT CONTROL PLAN**

**PROFESSIONAL ENGINEER**  
 D.B. GRAY  
 REG. P. ENG. (CIVIL)  
 REG. NO. 22893

Drawn: D.B.G.  
 H. Scale  
 V. Scale  
 Date: DEC 14-23  
 Job No.: 22893

Drawing No.: **C-3** of **4**  
 #19200

NOT VALID UNLESS SIGNED & DATED