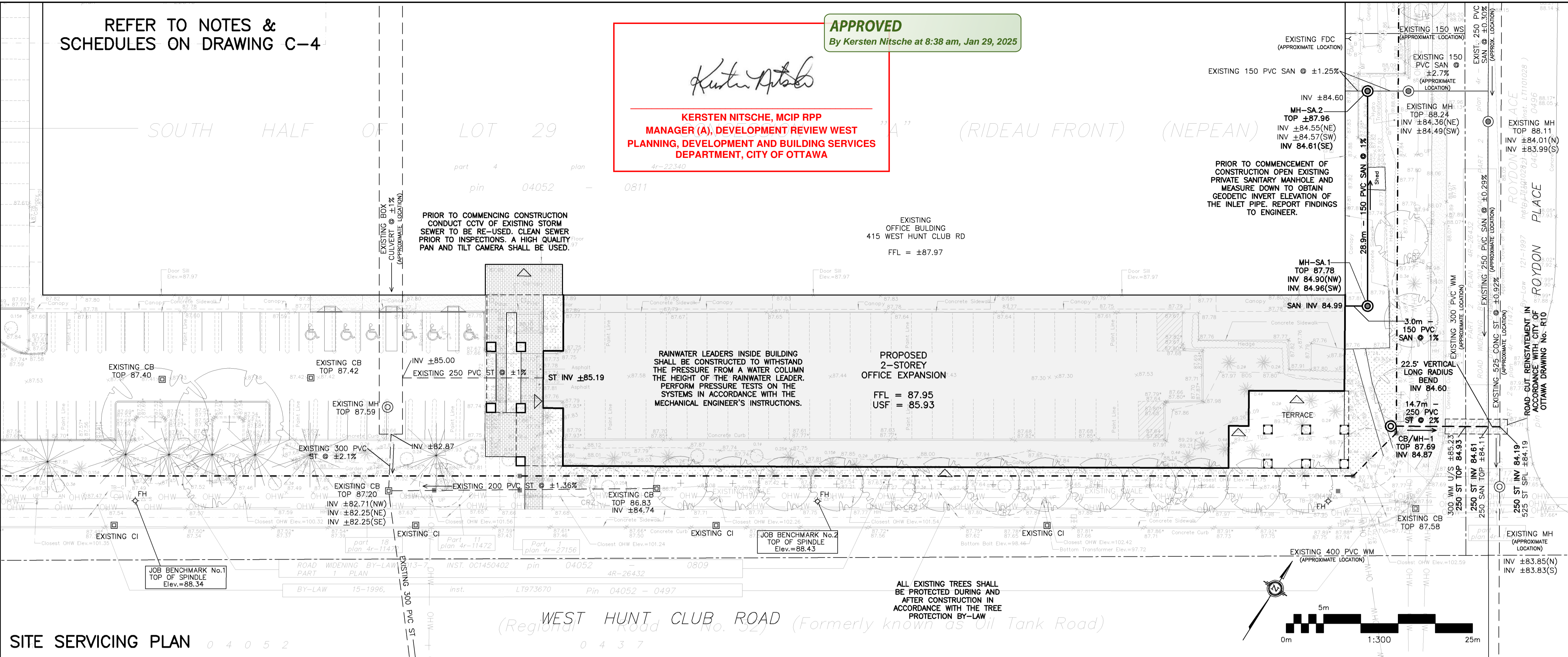


REFER TO NOTES & SCHEDULES ON DRAWING C-4

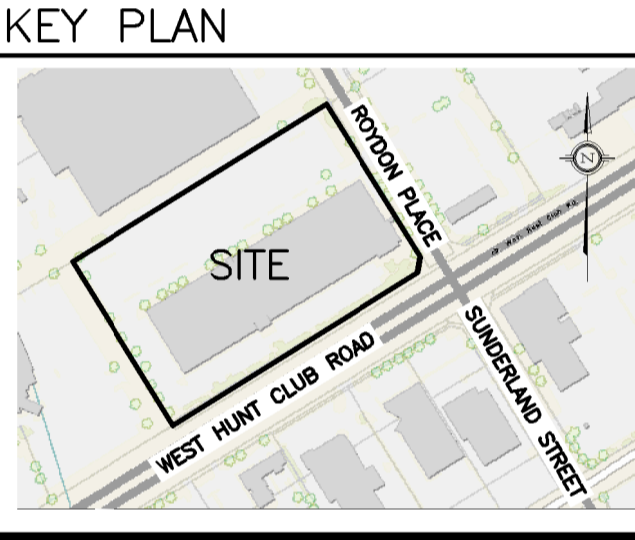
**APPROVED**  
By Kersten Nitsche at 8:38 am, Jan 29, 2025

**KERSTEN NITSCH, MCIP RPP**  
MANAGER (A), DEVELOPMENT REVIEW WEST  
PLANNING, DEVELOPMENT AND BUILDING SERVICES  
DEPARTMENT, CITY OF OTTAWA

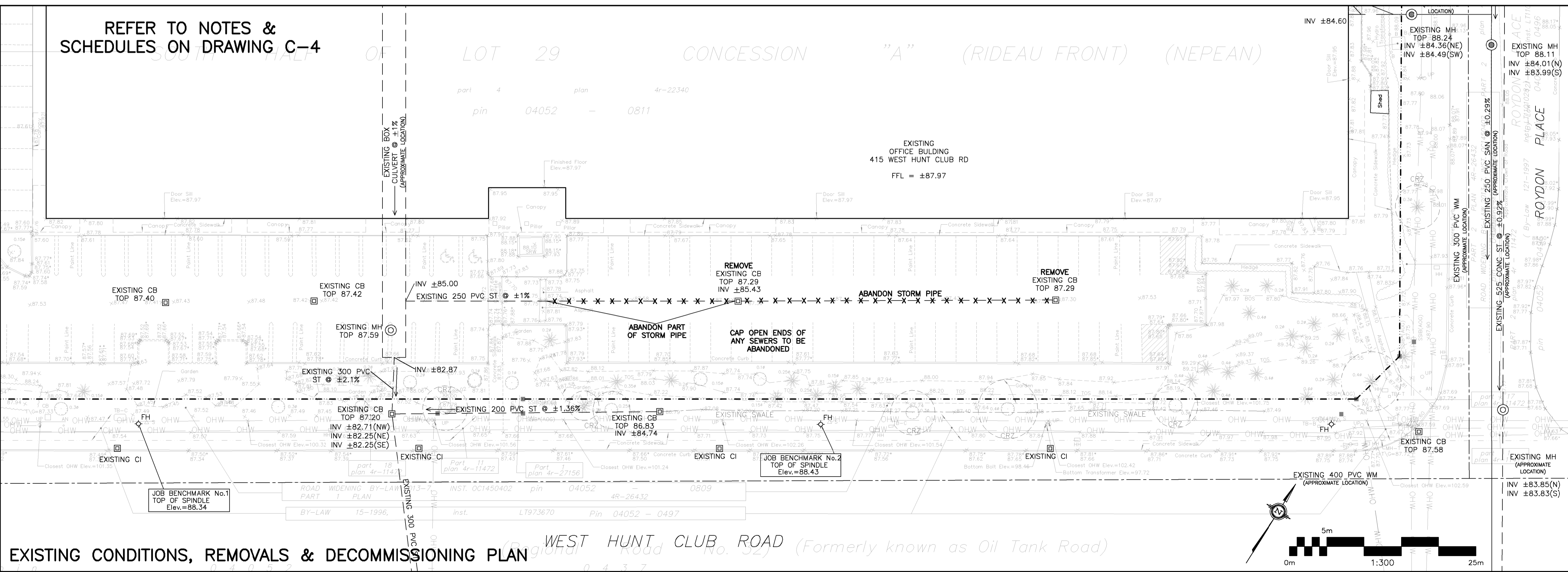


**LEGEND**

FFL	FIRST FLOOR ELEVATION
TOF	TOP OF FOUNDATION
USF	UNDERSIDE OF FOOTING
---	PROPERTY LINE
C.R.Z	CRITICAL ROOT ZONE
CB	CATCH BASIN
CI	CURB INLET CATCH BASIN
MH	STORM MANHOLE
CB/MH	CATCH-BASIN/MANHOLE
MH	SANITARY MANHOLE
FH	FIRE HYDRANT
FDC	FIRE DEPARTMENT CONNECTION
SAN	SANITARY SEWER
ST	STORM SEWER
WS/WM	WATER SERVICE/WATERMAIN
SPL	SPRINGLINE OF PIPE
INV	INVERT OF PIPE
---	CENTERLINE OF SWALE
---	150mm BARRIER CURB
D.C	DEPRESSED CURB
---	ROAD CUT REINSTATEMENT



REFER TO NOTES & SCHEDULES ON DRAWING C-4



No.	DATE	REVISION
8	JAN 16-25	RE-ISSUED FOR APPROVAL
7	DEC 9-24	RE-ISSUED FOR APPROVAL
6	NOV 26-24	RE-ISSUED FOR APPROVAL
5	AUG 29-24	RE-ISSUED FOR APPROVAL
4	JUL 12-24	ISSUED FOR BUILDING PERMIT
3	JUN 19-24	RE-ISSUED FOR APPROVAL
2	DEC 21-23	ISSUED FOR APPROVAL
1	DEC 14-23	ISSUED FOR COORDINATION

**D. B. GRAY ENGINEERING INC.**  
Stormwater Management • Grading & Drainage • Storm & Sanitary Sewers • Watermain  
700 Long Point Circle 613-425-8044  
Ottawa Ontario d.gray@dbgrayengineering.com

**PROPOSED 2-STORY OFFICE EXPANSION**  
415 WEST HUNT CLUB RD  
OTTAWA, ONTARIO

**SITE SERVICING PLAN & EXISTING CONDITIONS**

Engineer's Seal  
  
 NOT VALID UNLESS SIGNED & DATED

Drawn D.B.G.  
 H. Scale 1:300  
 V. Scale  
 Date DEC 14-23  
 Job No. 22093

Drawing No.  
**C-1**  
 of 4