

REFER TO NOTES &  
SCHEDULES ON DRAWING C-4

SOUTH HALF OF LOT 29

CONCESSION

"A" (RIDEAU FRONT)

EXISTING OFFICE BUILDING

415 WEST HUNT CLUB RD

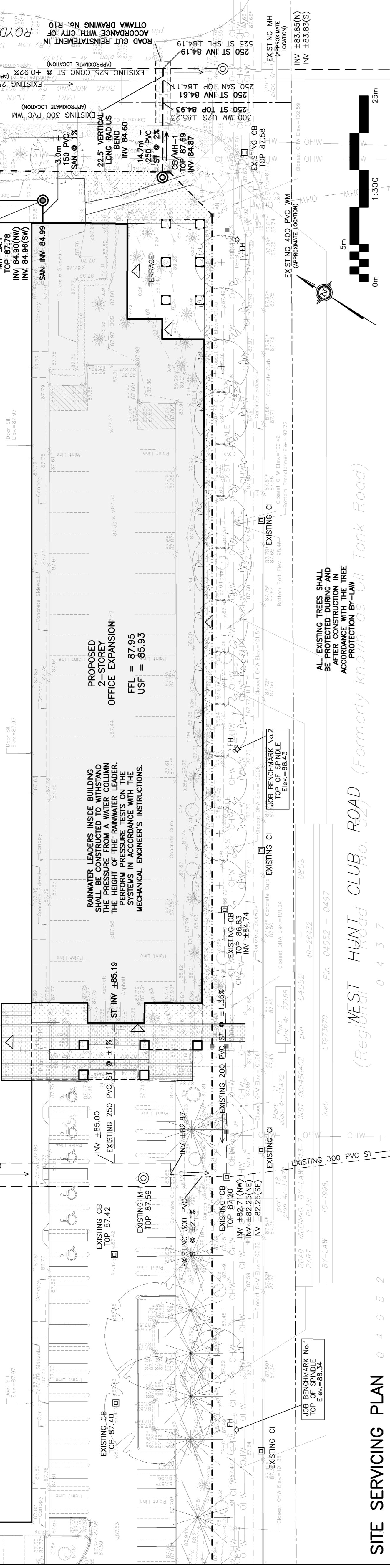
F.F.L. = ±87.97

PRIOR TO COMMENCING CONSTRUCTION CONDUCT CTV OF EXISTING STORM SEWER TO BE RE-USED. CLEAN SEWER MAIN TO BE RE-USED. USE OF LEVELING PAN AND TILT CAMERA SHALL BE USED.

RAINWATER LEADERS INSIDE BUILDING SHALL BE CONSTRUCTED TO STAND AT THE HEIGHT OF THE BANWATER LEADER. PERFORM PRESSURE TESTS ON THE SYSTEMS IN ACCORDANCE WITH THE MECHANICAL ENGINEER'S INSTRUCTIONS.

PRIOR TO COMMENCEMENT OF CONSTRUCTION OPEN EXISTING STORM SEWER MAIN TO OBTAIN GEODETIC INVERT ELEVATION OF THE INLET PIPE. REPORT FINDINGS TO ENGINEER.

ALL EXISTING TREES SHALL BE REMOVED AFTER CONSTRUCTION IN ACCORDANCE WITH THE PROTECTION BY-LAW



SITE SERVICING PLAN

WEST HUNT CLUB ROAD (Formerly known as Oil Tank Road)

"A" (RIDEAU FRONT)

EXISTING OFFICE BUILDING

415 WEST HUNT CLUB RD

F.F.L. = ±87.97

REFER TO NOTES &  
SCHEDULES ON DRAWING C-4

NORTH HALF OF LOT 29

CONCESSION

"A" (RIDEAU FRONT)

EXISTING OFFICE BUILDING

415 WEST HUNT CLUB RD

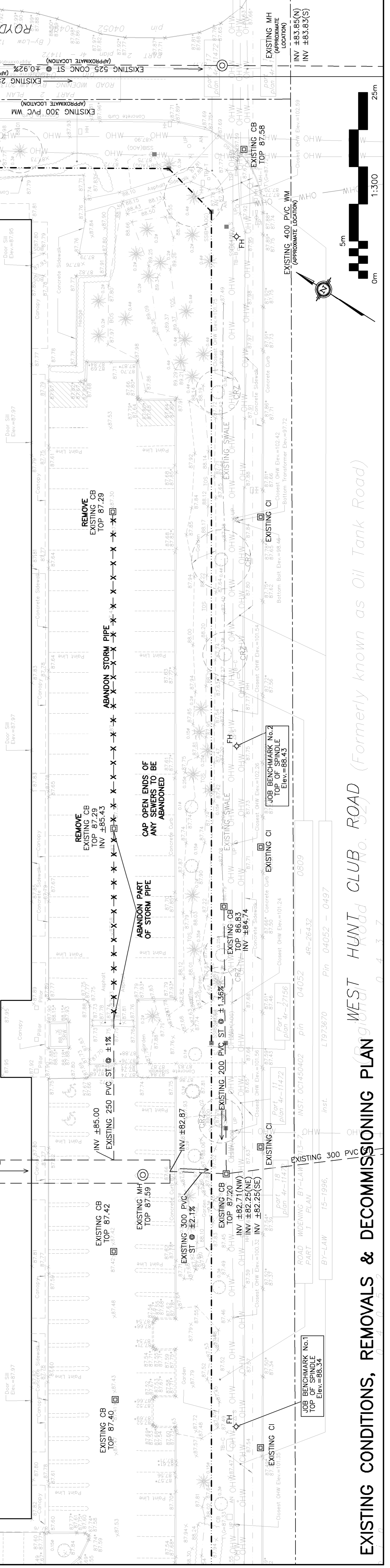
F.F.L. = ±87.97

PRIOR TO COMMENCING CONSTRUCTION CONDUCT CTV OF EXISTING STORM SEWER TO BE RE-USED. CLEAN SEWER MAIN TO BE RE-USED. USE OF LEVELING PAN AND TILT CAMERA SHALL BE USED.

ABANDON PART OF STORM PIPE  
CAP OPEN ENDS OF ANY SERVICES TO BE ABANDONED

REMOVE EXISTING CB  
REMOVE EXISTING STORM PIPE

ALL EXISTING TREES SHALL BE REMOVED AFTER CONSTRUCTION IN ACCORDANCE WITH THE PROTECTION BY-LAW



EXISTING CONDITIONS, REMOVALS & DECOMMISSIONING PLAN

WEST HUNT CLUB ROAD (Formerly known as Oil Tank Road)

"A" (RIDEAU FRONT)

EXISTING OFFICE BUILDING

415 WEST HUNT CLUB RD

F.F.L. = ±87.97

LEGEND

- F.F.L. FIRST FLOOR ELEVATION
- TOP OF FOUNDATION
- USF UNDERSIDE OF FOOTING
- PROPERTY LINE
- CRZ CRITICAL ROOT ZONE
- CB CATCH BASIN
- CI CURB INLET CATCH BASIN
- MH STORM MANHOLE
- CB/MH CATCH-BASIN/MANHOLE
- MH SANITARY MANHOLE
- FH FIRE HYDRANT
- FDC FIRE DEPARTMENT CONNECTION
- SNAN SANITARY SEWER
- ST STORM SEWER
- WS/WM WATER SERVICE/WATERMAIN
- SPL SPRINGLINE OF PIPE
- INV INVERT OF PIPE
- CENTERLINE OF SMALL
- 150mm BARRIER CURB
- D.C. DEPRESSED CURB
- ROAD CUT REINSTATEMENT

KEY PLAN



No.	DATE	REVISION
7	DEC 9-24	RE-ISSUED FOR APPROVAL
6	NOV 26-24	RE-ISSUED FOR APPROVAL
5	AUG 29-24	RE-ISSUED FOR APPROVAL
4	JUL 12-24	ISSUED FOR BUILDING PERMIT
3	JUN 19-24	RE-ISSUED FOR APPROVAL
2	DEC 21-23	ISSUED FOR APPROVAL
1	DEC 14-23	ISSUED FOR COORDINATION

D.B. GRAY ENGINEERING INC.  
Professional Engineers - Consulting & Engineering Services - Ontario  
700 Long Point Circle  
Ottawa, Ontario  
613-425-8044  
d.gray@dbgrayengineering.com

PROPOSED 2-STORY  
OFFICE EXPANSION  
415 WEST HUNT CLUB RD  
OTTAWA, ONTARIO

SITE SERVICING PLAN  
& EXISTING CONDITIONS

Engineer's Seal  
D.B.G.  
H. Scale 1:300  
V. Scale 1:300  
Date DEC 14-23  
Job No. 22893

Professional Engineer  
D.B. GRAY  
REG. NO. 10352  
PROVINCE OF ONTARIO

NOT VALID UNLESS  
SIGNED & DATED

Drawing No. C-1 of 4  
#19200

D07-12-24-0113