

KEY PLAN

SITE LOCATION

EXISTING LEGEND

- OH UP OVERHEAD WIRES
- LS UTILITY POLE
- CB LIGHT STANDARD
- CBE CATCHBASIN
- CBE CATCHBASIN ELBOW
- CBE CATCHBASIN TEE
- AD AREA DRAIN
- T/G TOP OF GRATE
- GM GAS METER
- MH MANHOLE (SANITARY OR STORM)
- G GAS MAIN
- V&VB VALVE AND VALVE BOX
- V&VC VALVE AND VALVE CHAMBER
- FH FIRE HYDRANT
- SS-300mm SAN STORM SEWER
- SS-200mm STM SANITARY SEWER
- WM EX-200mm WM WATERMAIN
- TREES
- FENCE
- OG ORIGINAL GROUND ELEVATION
- EX EXISTING CONTOUR
- OF OVERLAND FLOW ROUTE

PROPOSED LEGEND

- PL PROPERTY LINE
- SS-200mm SAN SANITARY SEWER
- SS-200mm STM STORM SEWER
- WM-200mm WM WATERMAIN
- CL CLAY SEAL
- SMH STORM MANHOLE
- SM SANITARY MANHOLE
- CB1 CATCHBASIN
- CBE CATCHBASIN ELBOW
- CBE CATCHBASIN TEE
- AD AREA DRAIN AND DECK DRAIN
- RD ROOF DRAIN
- V&VB VALVE AND VALVE BOX
- V&VC VALVE AND VALVE CHAMBER (W3)
- FH FIRE HYDRANT
- 45° 45° WATERMAIN BEND
- 22° 22.5° WATERMAIN BEND
- 11.25° 11.25° WATERMAIN BEND
- 200x150 WATERMAIN TEE (MAIN BRANCH)
- 200x200x200 WATERMAIN CROSS
- 200x150 WATERMAIN REDUCER
- WM WATER METER
- RWM REMOTE WATER METER READER
- SC SIAMSESE CONNECTION
- FF FLOOR ELEVATION
- GR GARAGE FLOOR SLAB ELEVATION
- P1 PARKING LEVEL FLOOR ELEVATION
- SLOPE AND DIRECTION OF FLOW
- 5A.75 FINAL GRADE
- H.P. HIGH POINT
- TERRACING
- T/G TOP OF GRATE ELEVATION
- T/F TOP OF FLANGE
- OF OVERLAND FLOW ROUTE
- PL PHASING LIMITS
- SILT FENCE
- BC BARRIER CURB (SC.1.1)
- DC DEPRESSED BARRIER CURB LOCATION
- OF OVERLAND FLOW ROUTE
- RETAINING WALL
- BL BUILDING ENTRY LOCATION
- SA STRUCTURE TO BE ADJUSTED
- SR STRUCTURE TO BE RELOCATED
- SP36 MAXIMUM SPILL PONDING LIMIT SHOWN (REFER TO TABLE ON DRAWING)

GRADING NOTE:

ALL GROUND SURFACES SHALL BE EVENLY GRADED WITHOUT PONDING AREAS AND WITHOUT LOW POINTS EXCEPT WHERE APPROVED CATCHBASINS AND AREA DRAINS INLETS ARE PROVIDED. THE SURFACE SHALL BE GRADED TO ONLY THE AREA DRAINS AND CATCHBASINS SHOWN ON THE GRADING PLANS. NO DECK DRAINS SHALL BE USED AS SURFACE INLETS.

TOPOGRAPHIC INFORMATION
 PROVIDED BY ANNIS, O'SULLIVAN, VOLLEBEKK LTD.
 DATED JULY 20, 2018

JOB BENCHMARK
 PROVIDED BY ANNIS, O'SULLIVAN, VOLLEBEKK LTD.
 NCC MONUMENT 01919680184
 NTM-NAD83 ZONE 9
 NORTHING=5040610.15
 EASTING=384736.57
 ELEVATION=52.68

ARCHITECTURE DE PAYSAGE Landscape architect

exp SERVICES INC.
 2650 Queenview Drive, Unit 100, Ottawa, ON, K2B 8H6
 T 613 688 1899 F 613 225 7330 www.exp.com

ARCHITECTES Architect
NEUF architect(e)s INCORPORÉ
 630, boul. René-Lévesque O. 5^{ème} étage, Montréal, QC H3B 1S6
 T 514 847 1117 NEUFArchitectes.com

SCEAU Seal

exp Services Inc.
 T +1 613 688 1899 | F +1 613 225 7337
 2650 Queenview Drive, Suite 100
 Ottawa, ON K2B 8H6
 Canada
 www.exp.com

• BUILDINGS • EARTH & ENVIRONMENT • ENERGY •
 • INDUSTRIAL • INFRASTRUCTURE • SUSTAINABILITY •

CLIENT Client

BRIGIL

98 Rue Leli, Gatineau QC J8Y 3R7
 T 819 243 7392 www.brigil.com

Ouvrage Project

PETRIE'S LANDING I - PHASES 3-5

EMPACEMENT Location NO PROJET No
 OTTAWA, ON. OTT-00247308-A0

| NO | REVISION | DATE (aa.mm.jj) |
|----|------------------------------------|-----------------|
| 1 | ISSUED FOR REVIEW | 18.08.03 |
| 2 | ISSUED FOR SITE PLAN APPROVAL | 18.09.14 |
| 3 | ISSUED FOR CLIENT REVIEW | 19.04.05 |
| 4 | ISSUED FOR SITE PLAN APPROVAL | 19.05.10 |
| 5 | ISSUED FOR SITE PLAN APPROVAL | 19.05.22 |
| 6 | ISSUED FOR SPA-CITY COMMENTS | 19.07.22 |
| 7 | REVISED PER CITY COMMENTS | 19.07.30 |
| 8 | UPDATED TOWER 4 | 20.02.12 |
| 9 | PRE-IFC FOR BRIGIL REVIEW | 20.09.14 |
| 10 | ISSUED FOR CONSTRUCTION | 20.11.10 |
| 11 | ISSUED FOR TOWER 4 BUILDING PERMIT | 21.12.10 |
| 12 | ISSUED FOR TENDER | 22.02.25 |
| 13 | ISSUED FOR PERMIT UPDATE | 22.03.14 |
| 14 | ISSUED FOR POST TENDER ADDENDUM 1 | 22.10.28 |
| 15 | ISSUED FOR TENDER | 22.12.05 |
| 16 | ISSUED FOR CONSTRUCTION | 22.12.16 |
| 17 | ISSUED FOR COORDINATION | 23.11.08 |
| 18 | ISSUED FOR SI-009 | 23.11.17 |
| 19 | ISSUED FOR APPROVAL | 24.06.24 |

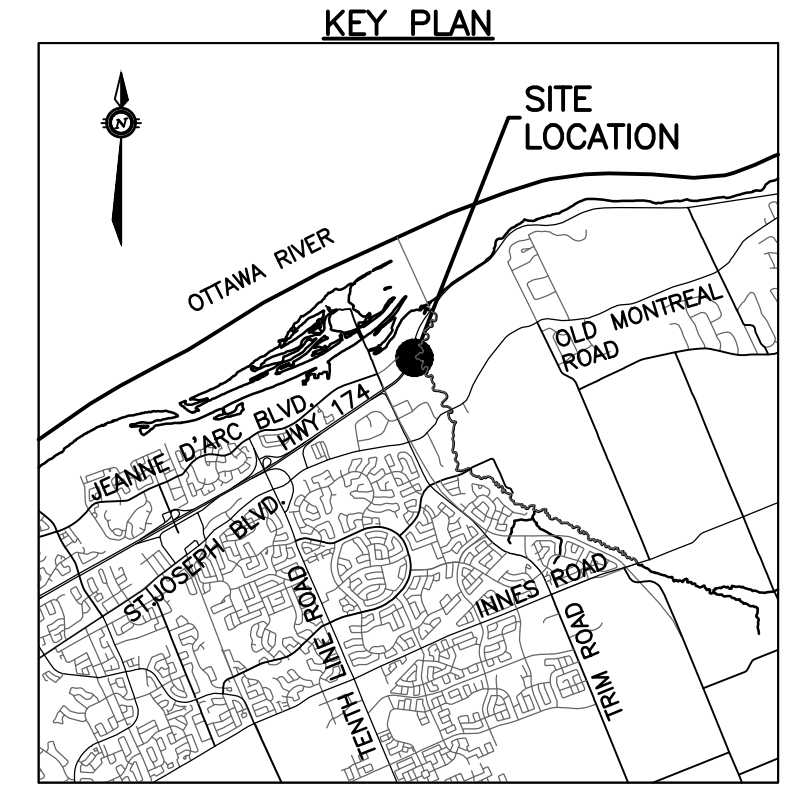
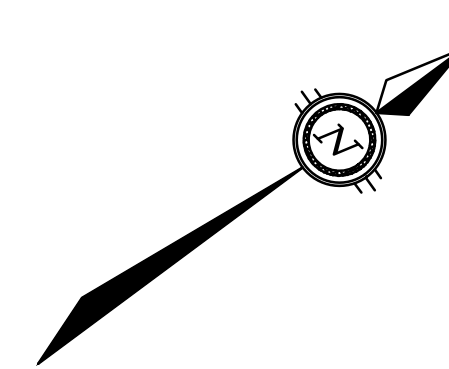
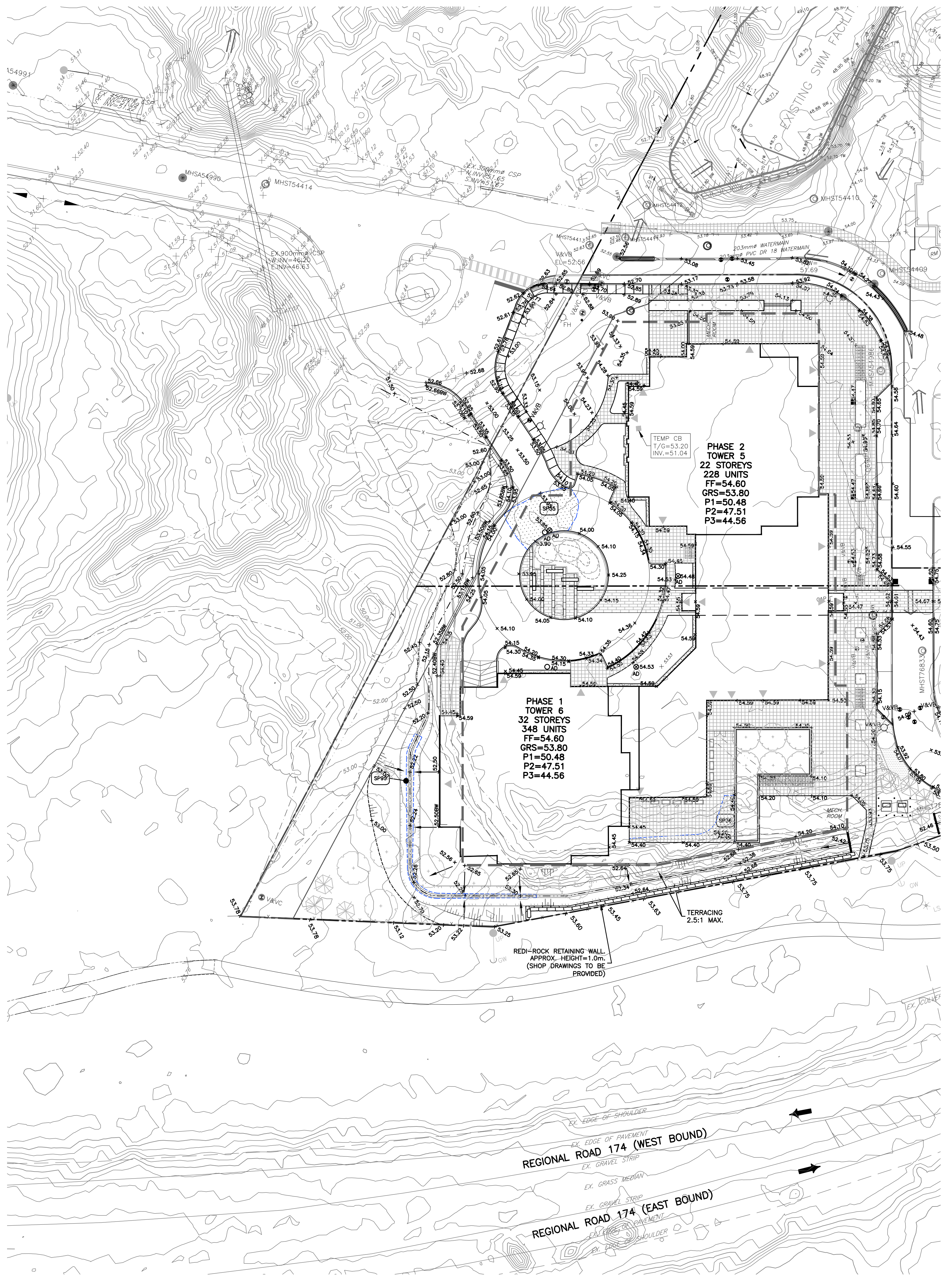
DESSINE PAR Drawn by S.BUTLER
 DATE (aa.mm.jj) 18.07.18
 TITRE DU DESSIN Drawing Title

VERIFIÉ PAR Checked by B.THOMAS
 ECHELLE Scale 1:400

STORM PONDING PLAN TOWERS 3 & 4

REVISION Revision NO DESSIN Dwg Number

C401
 #14602

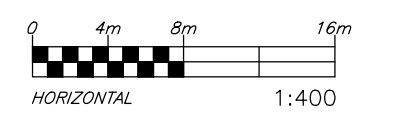


TOPOGRAPHIC INFORMATION
 PROVIDED BY ANNIS, O'SULLIVAN, VOLLEBEKK LTD.
 DATED JULY 20, 2018

JOB BENCHMARK
 PROVIDED BY ANNIS, O'SULLIVAN, VOLLEBEKK LTD.
 NCC MONUMENT 01919680184
 NTM-NAD83 ZONE 9
 NORTHING=5040610.15
 EASTING=384736.57
 ELEVATION=52.68

EXISTING LEGEND

- OH OH OVERHEAD WIRES
- UP UTILITY POLE
- LS LIGHT STANDARD
- CB CATCHBASIN
- CBE CATCHBASIN ELBOW
- CBT CATCHBASIN TEE
- AD AREA DRAIN
- T/G TOP OF GRATE
- GM GAS METER
- MH MANHOLE (SANITARY OR STORM)
- G GAS MAIN
- V&VB VALVE AND VALVE BOX
- V&VC VALVE AND VALVE CHAMBER
- FH FIRE HYDRANT
- EX 250mm SAN STORM SEWER
- EX 300mm STM SANITARY SEWER
- EX 200mm WM WATERMAIN
- TREES
- FENCE
- 55.00 ORIGINAL GROUND ELEVATION
- EXISTING CONTOUR
- OVERLAND FLOW ROUTE



ARCHITECTURE DE PAYSAGE Landscape architect

CIVIL
exp SERVICES INC.
 2650 Queenview Drive, Unit 100, Ottawa, ON, K2B 8H6
 T 613 688 1899 F 613 225 7337 www.exp.com

ARCHITECTS Architect
NEUF architect(e)s GENCOIL
 630, boul. René-Lévesque O. 5^{ème} étage, Montréal QC H3B 1S6
 T 514 847 1117 NEUFArchitectes.com

SCEAU Seal

| Ponding Number | MINIMUM PONDING ELEV (m) | AREA (m ²) | MAXIMUM SPILL | | | 5-YEAR | | | 100-YEAR | | |
|----------------|--------------------------|------------------------|--------------------|-----------------------|------------------------------------|----------------------|-----------------------|--------------------------------------|----------------------|-----------------------|--------------------------------------|
| | | | MAX SPILL ELEV (m) | MAX PONDING DEPTH (m) | MAX PRISM VOLUME (m ³) | MAX PONDING ELEV (m) | MAX PONDING DEPTH (m) | MAX PONDING VOLUME (m ³) | MAX PONDING ELEV (m) | MAX PONDING DEPTH (m) | MAX PONDING VOLUME (m ³) |
| SP35 | 53.50 | 88 | 53.7 | 0.20 | 4.4 | 53.53 | 0.03 | 0.9 | 53.70 | 0.20 | 5.9 |
| SP36 | 54.20 | 47 | 54.40 | 0.20 | 2.3 | 54.20 | 0.00 | 0.0 | 54.22 | 0.02 | 0.3 |
| SP99 | 51.89 | 45 | 52.04 | 0.15 | 5 | 51.92 | 0.03 | 0.5 | 52.02 | 0.12 | 1.8 |

GRADING NOTE:
 ALL GROUND SURFACES SHALL BE EVENLY GRADED WITHOUT PONDING AREAS AND WITHOUT LOW POINTS EXCEPT WHERE APPROVED CATCHBASINS AND AREA DRAIN INLETS ARE PROVIDED. THE SURFACE SHALL BE GRADED TO ONLY THE AREA DRAINS AND CATCHBASINS SHOWN ON THE GRADING PLANS. NO DECK DRAINS SHALL BE USED AS SURFACE INLETS.

PROPOSED LEGEND

- 200mm SAN SANITARY SEWER
- 200mm STM STORM SEWER
- 200mm WATERMAIN WATERMAIN
- CLAY SEAL
- STM MH 211 STORM MANHOLE
- SAN MH 104 SANITARY MANHOLE
- CB1 CATCHBASIN
- CBE CATCHBASIN ELBOW
- CBT CATCHBASIN TEE
- AD AREA DRAIN AND DECK DRAIN
- RD ROOF DRAIN
- V&VB VALVE AND VALVE BOX
- V&VC VALVE AND VALVE CHAMBER (W3)
- FH FIRE HYDRANT
- 45' 45' WATERMAIN BEND
- 22' 22.5' WATERMAIN BEND
- 11' 11.25' WATERMAIN BEND
- 200x150 WATERMAIN TEE (MAIN BRANCH)
- 200x200x200 WATERMAIN CROSS
- 200x150 WATERMAIN REDUCER
- WM WATER METER
- RM REMOTE WATER METER READER
- SC SIAMSESE CONNECTION
- FF FLOOR ELEVATION
- P1 GARAGE FLOOR SLAB ELEVATION
- P2 PARKING LEVEL FLOOR ELEVATION
- 3.0% SLOPE AND DIRECTION OF FLOW
- 54.75 FINAL GRADE
- H.P. HIGH POINT
- TERRACING
- T/G TOP OF GRATE ELEVATION
- T/F TOP OF FLANGE
- OVERLAND FLOW ROUTE
- PHASING LIMITS
- SILT FENCE
- BARRIER CURB (SC1.1)
- DC DEPRESSED BARRIER CURB LOCATION
- SWALE AND DIRECTION OF FLOW
- RETAINING WALL
- BUILDING ENTRY LOCATION
- STRUCTURE TO BE ADJUSTED
- STRUCTURE TO BE RELOCATED
- SP36 MAXIMUM SPILL PONDING LIMIT SHOWN (REFER TO TABLE ON DRAWING)

exp Services Inc.
 T +1 613 688 1899 | F +1 613 225 7337
 2650 Queenview Drive, Suite 100
 Ottawa, ON K2B 8H6
 Canada
 www.exp.com



- BUILDINGS • EARTH & ENVIRONMENT • ENERGY •
- INDUSTRIAL • INFRASTRUCTURE • SUSTAINABILITY •



98 Rue Lahaie, Gatineau QC J8Y 3R7
 T 819 243 7392 www.brigil.com

PETRIE'S LANDING I - PHASES 3-5

EMPLACEMENT Location NO PROJECT NO
 OTTAWA, ON. OTT-00247308-A0
 NO REVISION DATE (aa mm jj)
 NO REVISION DATE (aa mm jj)

| | | |
|----|---|----------|
| 1 | ISSUED FOR REVIEW | 18.08.03 |
| 2 | ISSUED FOR SITE PLAN APPROVAL | 18.09.14 |
| 3 | ISSUED FOR CLIENT REVIEW | 19.04.05 |
| 4 | ISSUED FOR SITE PLAN APPROVAL | 19.05.10 |
| 5 | ISSUED FOR SITE PLAN APPROVAL | 19.05.22 |
| 6 | ISSUED FOR SPA-CITY COMMENTS | 19.07.22 |
| 7 | REVISED PER CITY COMMENTS | 19.07.30 |
| 8 | UPDATED TOWER 4 | 20.02.12 |
| 9 | UPDATE TO OVERLAND FLOW ROUTE AT TOWER 5A/B | 20.06.12 |
| 10 | PRE-IFC FOR BRIGIL REVIEW | 20.09.14 |
| 11 | ISSUED FOR CONSTRUCTION | 20.11.10 |
| 12 | ISSUED FOR TOWER 4 BUILDING PERMIT | 21.12.10 |
| 13 | ISSUED FOR PERMIT UPDATE | 22.03.14 |
| 14 | ISSUED FOR 80% REVIEW | 22.04.21 |
| 15 | ISSUED FOR PERMIT | 22.07.15 |
| 16 | ISSUED FOR POST TENDER ADDENDUM 1 | 22.10.28 |
| 17 | ISSUED FOR TENDER | 22.12.05 |
| 18 | ISSUED FOR CONSTRUCTION | 22.12.16 |
| 19 | ISSUED FOR RE-TENDER | 23.03.10 |
| 20 | ISSUED FOR COORDINATION | 23.11.08 |
| 21 | ISSUED FOR SI-009 | 23.11.17 |

DESIGN PAR Drawn by S.BUTLER VERIFIED PAR Checked by B.THOMAS
 DATE (aa mm jj) 18.07.18 ECHELLE Scale 1:400

STORM PONDING PLAN TOWERS 5 & 6

REVISION Revision NO DESSIN Dwg Number