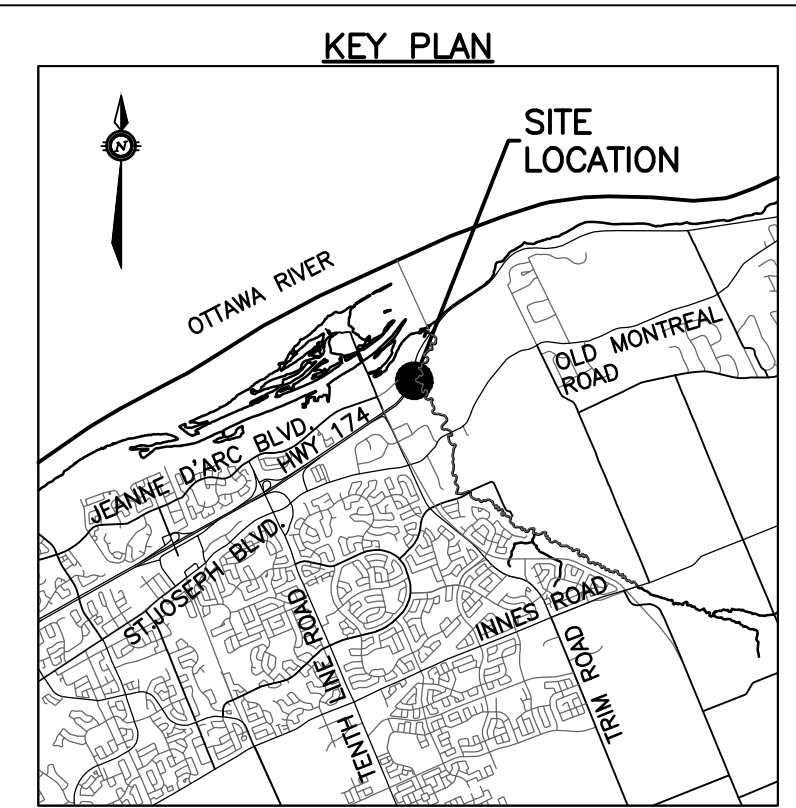
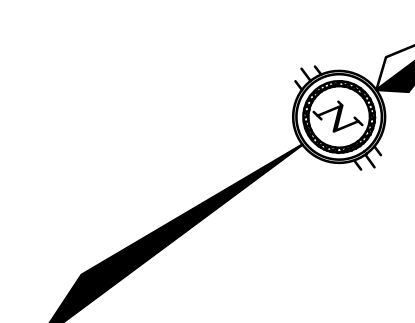
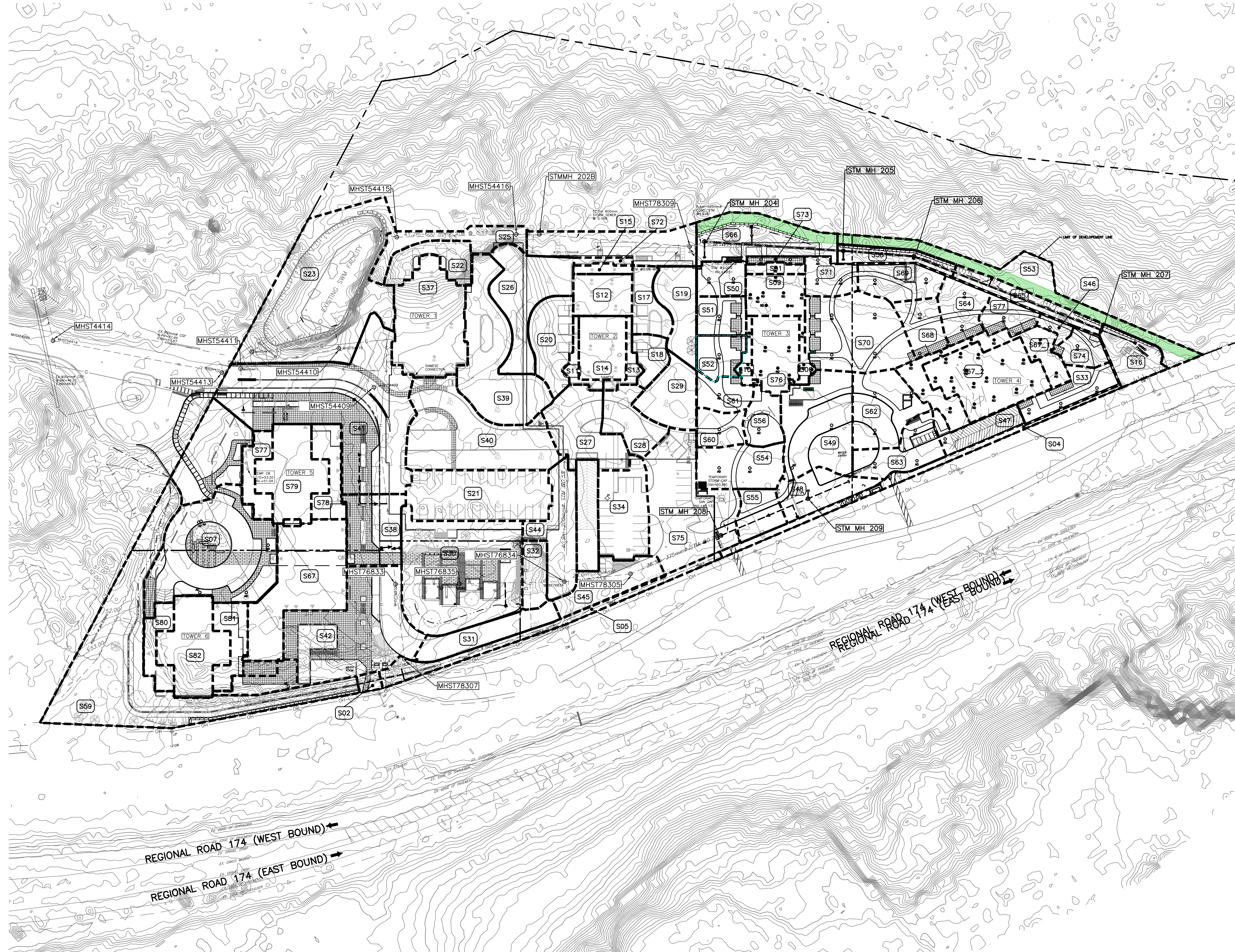


Name	Area (ha)	Cavg
S01	0.0074	0.90
S02	0.0048	0.36
S04	0.0285	0.25
S05	0.037	0.21
S06	0.0075	0.90
S07	0.1446	0.72
S08	0.0594	0.45
S09	0.0294	0.90
S10	0.0078	0.90
S11	0.0092	0.90
S12	0.0293	0.90
S13	0.0096	0.90
S14	0.0359	0.90
S15	0.0066	0.90
S16	0.028	0.29
S17	0.0246	0.38
S18	0.0168	0.36
S19	0.0366	0.37
S20	0.0411	0.33
S21	0.0849	0.90
S22	0.0299	0.68
S23	0.1972	0.20
S24	0.0602	0.28
S25	0.0338	0.20
S26	0.0662	0.27
S27	0.0552	0.77
S28	0.0328	0.70
S29	0.0376	0.36
S30	0.1517	0.36
S31	0.0372	0.90
S32	0.0197	0.90
S33	0.0302	0.33
S34	0.0543	0.73
S37	0.087	0.90
S38	0.0506	0.90
S39	0.0951	0.34
S40	0.114	0.65
S41	0.213	0.79
S42	0.127	0.68
S43	0.029	0.90
S44	0.0496	0.20
S45	0.0396	0.76
S46	0.0113	0.33
S47	0.0243	0.84
S48	0.0359	0.80
S49	0.0801	0.61
S50	0.02	0.43
S51	0.0231	0.47
S52	0.0224	0.41
S53	0.0634	0.20
S54	0.0442	0.26
S55	0.0232	0.67
S56	0.0223	0.51
S57	0.0235	0.43
S58	0.0211	0.35
S59	0.2066	0.21
S60	0.0205	0.37
S61	0.0213	0.44
S62	0.0443	0.59
S63	0.0435	0.70
S64	0.0516	0.39
S65	0.0253	0.23
S66	0.0639	0.30
S67_1	0.0511	0.90
S67_2	0.0762	0.90
S68	0.0279	0.40
S69	0.0366	0.33
S70	0.0828	0.39
S71	0.023	0.26
S72	0.005	0.90
S73	0.0048	0.90
S74	0.0147	0.52
S75	0.1074	0.69
S76	0.0403	0.90
S77	0.0208	0.90
S78	0.021	0.90
S79	0.0583	0.90
S80	0.0169	0.90
S81	0.021	0.90
S82	0.0583	0.90



EXISTING LEGEND

- OH - OVERHEAD WIRES
- UP - UTILITY POLE
- LS - LIGHT STANDARD
- CB - CATCHBASIN
- CBE - CATCHBASIN ELBOW
- CBT - CATCHBASIN TEE
- AD - AREA DRAIN
- T/G - TOP OF GRATE
- GM - GAS METER
- MH - MANHOLE (SANITARY OR STORM)
- G - GAS MAIN
- V&VB - VALVE AND VALVE BOX
- V&VC - VALVE AND VALVE CHAMBER
- FH - FIRE HYDRANT
- SS - STORM SEWER
- SSM - SANITARY SEWER
- WM - WATERMAIN
- T - TREES
- F - FENCE
- GE - ORIGINAL GROUND ELEVATION
- CE - EXISTING CONTOUR
- OF - OVERLAND FLOW ROUTE

PROPOSED LEGEND

- PL - PROPERTY LINE
- SS - SANITARY SEWER
- SSM - STORM SEWER
- WM - WATERMAIN
- CS - CLAY SEAL
- STM MH 211 - STORM MANHOLE
- SAN MH 104 - SANITARY MANHOLE
- CB1 - CATCHBASIN
- CBE - CATCHBASIN ELBOW
- CBT - CATCHBASIN TEE
- AD - AREA DRAIN AND DECK DRAIN
- RD - ROOF DRAIN
- V&VB - VALVE AND VALVE BOX
- V&VC - VALVE AND VALVE CHAMBER (W3)
- FH - FIRE HYDRANT
- 45' - 45" WATERMAIN BEND
- 22' - 22.5" WATERMAIN BEND
- 11' - 11.25" WATERMAIN BEND
- 200x150 - WATERMAIN TEE (MAIN BRANCH)
- 200x200x200 - WATERMAIN CROSS
- 200x150 - WATERMAIN REDUCER
- WM - WATER METER
- RM - REMOTE WATER METER READER
- SC - SIAMESE CONNECTION
- FF - FLOOR ELEVATION
- GRS - GARAGE FLOOR SLAB ELEVATION
- P1 - PARKING LEVEL FLOOR ELEVATION
- 3.0% - SLOPE AND DIRECTION OF FLOW
- 54.75 - FINAL GRADE
- H.P. - HIGH POINT
- TERRACING - TERRACING
- T/G - TOP OF GRATE ELEVATION
- T/F - TOP OF FLANGE
- OF - OVERLAND FLOW ROUTE
- PL - PHASING LIMITS
- SILT - SILT FENCE
- 9 - UPDATE TO OVERLAND FLOW ROUTE AT TOWER 5A5B
- 10 - PRE-IFC FOR BRIGIL REVIEW
- 11 - ISSUED FOR CONSTRUCTION
- 12 - ISSUED FOR TOWER 4 BUILDING PERMIT
- 13 - ISSUED FOR PERMIT UPDATE
- 14 - ISSUED FOR 80% REVIEW
- 15 - ISSUED FOR PERMIT
- 16 - ISSUED FOR POST TENDER ADDENDUM 1
- 17 - ISSUED FOR TENDER
- 18 - ISSUED FOR CONSTRUCTION
- 19 - ISSUED FOR RE-TENDER
- 20 - ISSUED FOR COORDINATION
- 21 - ISSUED FOR SI-099
- DESIGN PAR - Drawn by S.BUTLER
- VERIFIED PAR - Checked by B.THOMAS
- DATE (as mm/yy) 18.07.18
- ECHELLE / Scale 1:750
- TITRE DU DESSIN / Drawing Title STORM DRAINAGE PLAN

TOPOGRAPHIC INFORMATION
 PROVIDED BY ANNIS, O'SULLIVAN, VOLLEBEKK LTD.
 DATED JULY 20, 2018

JOB BENCHMARK
 PROVIDED BY ANNIS, O'SULLIVAN, VOLLEBEKK LTD.
 NCC MONUMENT 01919680184
 NTM-NAD83 ZONE 9
 NORTHING=5040610.15
 EASTING=384736.57
 ELEVATION=52.68

ARCHITECTURE DE PAYSAGE Landscape architect

CIVIL Civil
exp SERVICES INC.
 2650 Queenview Drive, Unit 100, Ottawa, ON, K2B 8H6
 T 613 688 1939 F 613 225 7330 www.exp.com

ARCHITECTES Architect
NEUF ARCHITECTE(S) GENÉRAL
 650, rue Notre-Dame O. 5^{ème} étage, Montréal QC H3B 1S6
 T 514 947 1117 NEUFArchitectes.com

SCEAU Seal



exp Services Inc.
 L: +1 613 688 1939 | F: +1 613 225 7337
 2650 Queenview Drive, Suite 100
 Ottawa, ON K2B 8H6
 Canada
 www.exp.com

exp.

- BUILDINGS • EARTH & ENVIRONMENT • ENERGY •
- INDUSTRIAL • INFRASTRUCTURE • SUSTAINABILITY •

CLIENT Client
BRIGIL
 98 Rue Lahaie, Gatineau QC J8Y 3R7
 T 819 243 7392 www.brigil.com
 OUVRAGE Project

PETRIE'S LANDING I - PHASES 3-5

EMPLACEMENT Location NO PROJET No
 OTTAWA, ON. OTT-00247308-A0
 NO REVISION DATE (as mm/yy)

1	ISSUED FOR REVIEW	18.08.03
2	ISSUED FOR SITE PLAN APPROVAL	18.09.14
3	ISSUED FOR CLIENT REVIEW	19.04.05
4	ISSUED FOR SITE PLAN APPROVAL	19.05.10
5	ISSUED FOR SITE PLAN APPROVAL	19.05.22
6	ISSUED FOR SPA-CITY COMMENTS	19.07.22
7	REVISED PER CITY COMMENTS	19.07.30
8	UPDATED TOWER 4	20.02.12
9	UPDATE TO OVERLAND FLOW ROUTE AT TOWER 5A5B	20.06.12
10	PRE-IFC FOR BRIGIL REVIEW	20.09.14
11	ISSUED FOR CONSTRUCTION	20.11.10
12	ISSUED FOR TOWER 4 BUILDING PERMIT	21.12.10
13	ISSUED FOR PERMIT UPDATE	22.03.14
14	ISSUED FOR 80% REVIEW	22.04.21
15	ISSUED FOR PERMIT	22.07.15
16	ISSUED FOR POST TENDER ADDENDUM 1	22.10.28
17	ISSUED FOR TENDER	22.12.05
18	ISSUED FOR CONSTRUCTION	22.12.16
19	ISSUED FOR RE-TENDER	23.03.10
20	ISSUED FOR COORDINATION	23.11.08
21	ISSUED FOR SI-099	23.11.17

DESIGN PAR Drawn by S.BUTLER VERIFIED PAR Checked by B.THOMAS
 DATE (as mm/yy) 18.07.18 ECHELLE / Scale 1:750
 TITRE DU DESSIN / Drawing Title STORM DRAINAGE PLAN

STORM DRAINAGE PLAN

NO DESSIN Dwg Number
C400
 #14602