

PAVEMENT STRUCTURE:

- ASPHALT PAVEMENT (OVER EARTH)
- ASPHALT PAVEMENT (OVER PARKING STRUCTURE). REFER TO ARCHITECTURAL PLANS

HEAVY DUTY PAVEMENT STRUCTURE FOR NEW ACCESS LANES OVER EARTH SHALL BE AS FOLLOWS:
 40mm HL-3 OR SUPERPAVE (PG) 58-34 12.5 ASPHALTIC CONCRETE
 50mm HL-8 OR SUPERPAVE (PG) 58-34 19.0 ASPHALTIC CONCRETE
 150mm BASE - OPSS GRANULAR A CRUSHED STONE
 400mm SUBBASE - OPSS GRANULAR B TYPE II
 SUBGRADE - EITHER FILL, IN SITU SOIL OR OPSS GRANULAR B TYPE I OR II

HEAVY DUTY PAVEMENT STRUCTURE FOR NEW ACCESS LANES AREAS OVER PARKING STRUCTURES SHALL BE AS FOLLOWS:
 40mm HL-3 OR SUPERPAVE (PG) 58-34 12.5 ASPHALTIC CONCRETE
 50mm HL-8 OR SUPERPAVE (PG) 58-34 19.0 ASPHALTIC CONCRETE
 150mm BASE - OPSS GRANULAR A CRUSHED STONE
 100mm SUBBASE - OPSS GRANULAR B TYPE II
 BELOW GRANULAR B REFER TO ARCHITECTURAL PLANS

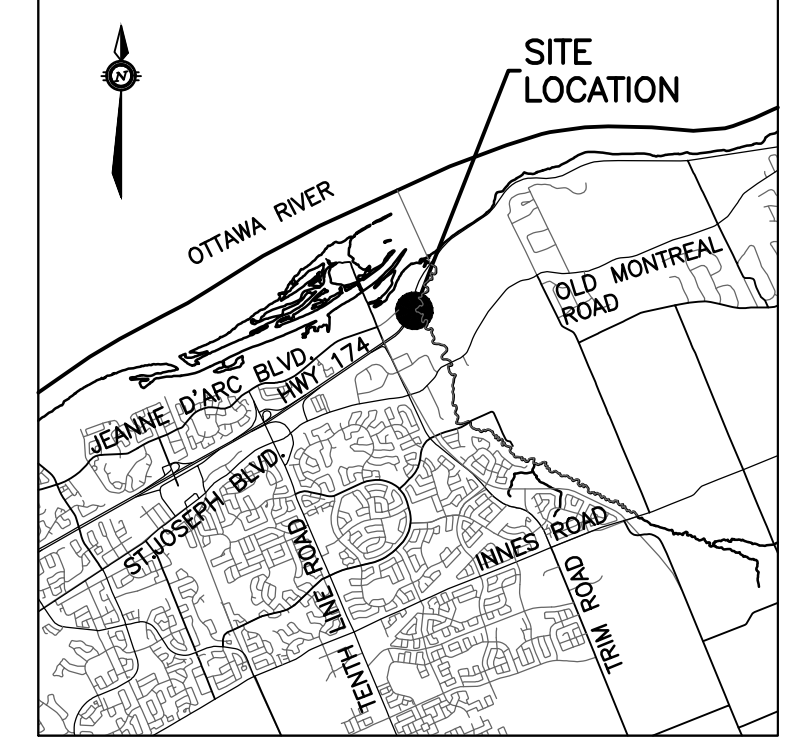
LIGHT DUTY PAVEMENT STRUCTURE FOR NEW PARKING OVER EARTH SHALL BE AS FOLLOWS:
 50mm HL-3 OR SUPERPAVE (PG) 58-34 12.5 ASPHALTIC CONCRETE
 150mm BASE - OPSS GRANULAR A CRUSHED STONE
 300mm SUBBASE - OPSS GRANULAR B TYPE II
 SUBGRADE - EITHER FILL, IN SITU SOIL OR OPSS GRANULAR B TYPE I OR II

LIGHT DUTY PAVEMENT STRUCTURE FOR NEW ACCESS LANES AREAS OVER PARKING STRUCTURES SHALL BE AS FOLLOWS:
 50mm HL-3 OR SUPERPAVE (PG) 58-34 12.5 ASPHALTIC CONCRETE
 150mm BASE - OPSS GRANULAR A CRUSHED STONE
 100mm SUBBASE - OPSS GRANULAR B TYPE II
 BELOW GRANULAR B REFER TO ARCHITECTURAL PLAN

GRADING NOTE:

ALL GROUND SURFACES SHALL BE EVENLY GRADED WITHOUT PONDING AREAS AND WITHOUT LOW POINTS EXCEPT WHERE APPROVED CATCHBASINS AND AREA DRAINS INLETS ARE PROVIDED. THE SURFACE SHALL BE GRADED TO ONLY THE AREA DRAINS AND CATCHBASINS SHOWN ON THE GRADING PLANS. NO DECK DRAINS SHALL BE USED AS SURFACE INLETS.

KEY PLAN

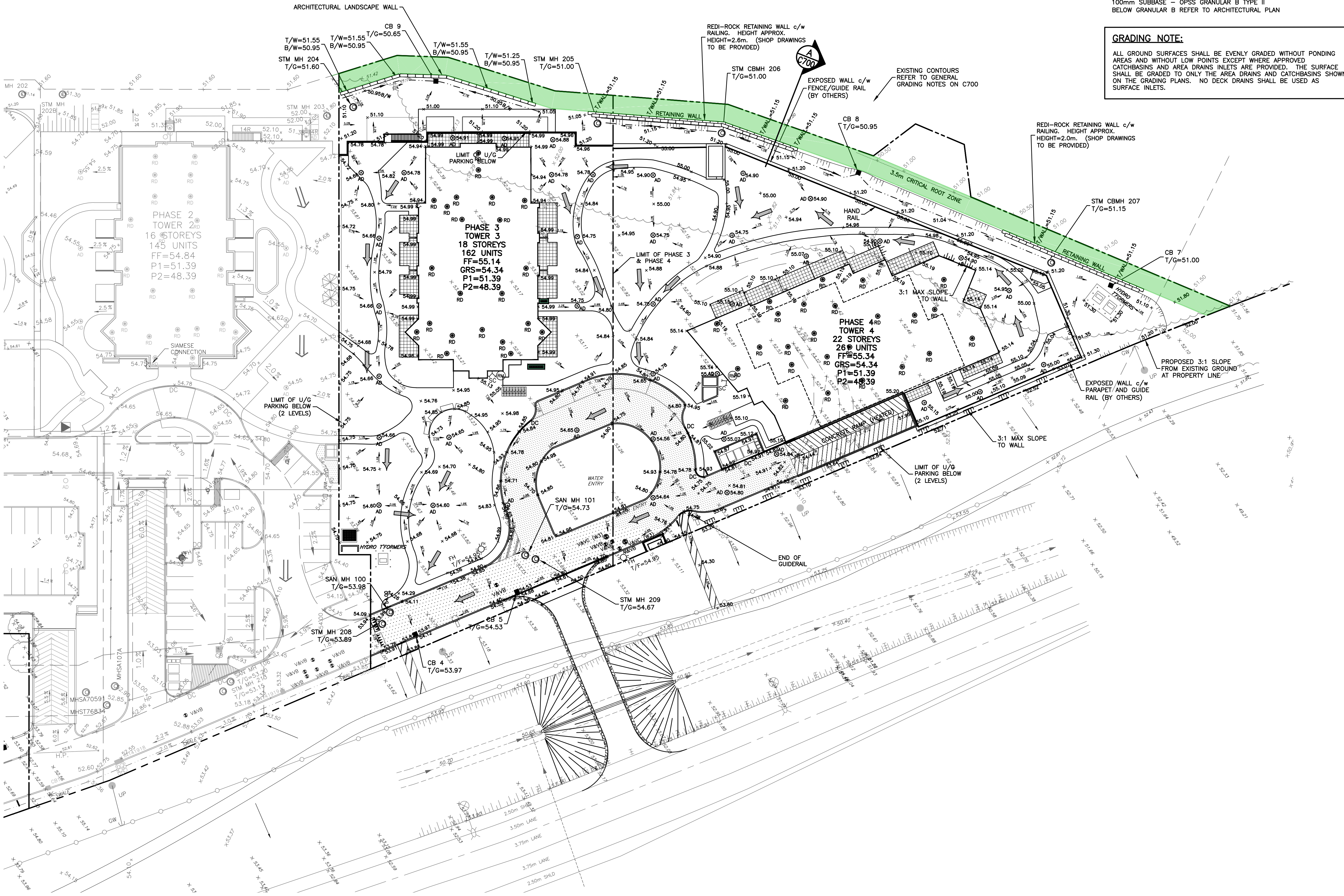


EXISTING LEGEND

- OVERHEAD WIRES
- UTILITY POLE
- LIGHT STANDARD
- CATCHBASIN
- CATCHBASIN ELBOW
- CATCHBASIN TEE
- AREA DRAIN
- TOP OF GRATE
- GAS METER
- MANHOLE (SANITARY OR STORM)
- GAS MAIN
- VALVE AND VALVE BOX
- VALVE AND VALVE CHAMBER
- FIRE HYDRANT
- STORM SEWER
- SANITARY SEWER
- WATERMAIN
- TREES
- FENCE
- ORIGINAL GROUND ELEVATION
- EXISTING CONTOUR
- OVERLAND FLOW ROUTE

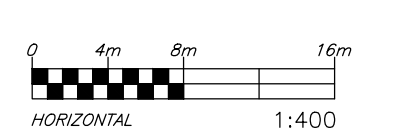
PROPOSED LEGEND

- PROPERTY LINE
- SANITARY SEWER
- STORM SEWER
- WATERMAIN
- CLAY SEAL
- STORM MANHOLE
- SANITARY MANHOLE
- CATCHBASIN
- CATCHBASIN ELBOW
- CATCHBASIN TEE
- AREA DRAIN AND DECK DRAIN
- ROOF DRAIN
- VALVE AND VALVE BOX
- VALVE AND VALVE CHAMBER (W3)
- FIRE HYDRANT
- 45° WATERMAIN BEND
- 22.5° WATERMAIN BEND
- 11.25° WATERMAIN BEND
- WATERMAIN CROSS (MAIN BRANCH)
- WATERMAIN CROSS
- WATERMAIN REDUCER
- WATER METER
- REMOTE WATER METER READER
- SIAMESE CONNECTION
- FLOOR ELEVATION
- GARAGE FLOOR SLAB ELEVATION
- PARKING LEVEL FLOOR ELEVATION
- SLOPE AND DIRECTION OF FLOW
- FINAL GRADE
- HIGH POINT
- TRENCHING
- TOP OF GRATE ELEVATION
- TOP OF FLANGE
- OVERLAND FLOW ROUTE
- PHASING LIMITS
- SILTY FENCE
- BARRIER CURB (SC.1.1)
- DEPRESSED BARRIER CURB LOCATION
- SWALE AND DIRECTION OF FLOW
- RETAINING WALL
- BUILDING ENTRY LOCATION
- STRUCTURE TO BE ADJUSTED
- STRUCTURE TO BE RELOCATED



TOPOGRAPHIC INFORMATION
 PROVIDED BY ANNIS, O'SULLIVAN, VOLLEBEKK LTD.
 DATED JULY 20, 2018

JOB BENCHMARK
 PROVIDED BY ANNIS, O'SULLIVAN, VOLLEBEKK LTD.
 NCC MONUMENT 01919680184
 NTM-NAD83 ZONE 9
 NORTHING=5040610.15
 EASTING=384736.57
 ELEVATION=52.68



ARCHITECTURE DE PAYSAGE Landscape architect

CIVIL Civil
exp SERVICES INC.
 2650 Queenview Drive, Unit 100, Ottawa, ON K2B 8H6
 T 613 688 1999 F 613 225 7330 www.exp.com

ARCHITECTES Architect
NEUF ARCHITECTURE(S) INC.
 630, rue Notre-Dame O. 3^e étage, Montréal, QC H3B 1S6
 T 514 847 1117 NEUFArchitectes.com

SICPAU Seal

exp Services Inc.
 T +1 613 688 1999 | F +1 613 225 7337
 2650 Queenview Drive, Suite 100
 Ottawa, ON K2B 8H6
 Canada
 www.exp.com



- BUILDINGS • EARTH & ENVIRONMENT • ENERGY •
- INDUSTRIAL • INFRASTRUCTURE • SUSTAINABILITY •

CLIENT Client



98 Rue Lelièvre, Gatineau QC J8Y 3R7
 T 819 243 7392 www.brigil.com

Ouvrage Project

PETRIE'S LANDING I - PHASES 3-5

EMPLACEMENT Location NO PROJET No.
 OTTAWA, ON. OTT-00247308-A0

NO	REVISION	DATE (aa.mm.jj)
1	ISSUED FOR REVIEW	18.08.03
2	ISSUED FOR SITE PLAN APPROVAL	18.09.14
3	ISSUED FOR CLIENT REVIEW	19.04.05
4	ISSUED FOR SITE PLAN APPROVAL	19.05.10
5	ISSUED FOR SITE PLAN APPROVAL	19.05.22
6	ISSUED FOR SPA-CITY COMMENTS	19.07.22
7	REVISED PER CITY COMMENTS	19.07.30
8	UPDATED TOWER 4	20.02.12
9	PRE-IFC FOR BRIGIL REVIEW	20.09.14
10	ISSUED FOR CONSTRUCTION	20.11.10
11	ISSUED FOR TOWER 4 BUILDING PERMIT	21.12.10
12	ISSUED FOR TENDER	22.02.25
13	ISSUED FOR PERMIT UPDATE	22.03.14
14	ISSUED FOR POST TENDER ADDENDUM 1	22.10.28
15	ISSUED FOR TENDER	22.12.05
16	ISSUED FOR CONSTRUCTION	22.12.16
17	ISSUED FOR COORDINATION	23.11.08
18	ISSUED FOR SI-009	23.11.17
19	ISSUED FOR APPROVAL	24.06.24

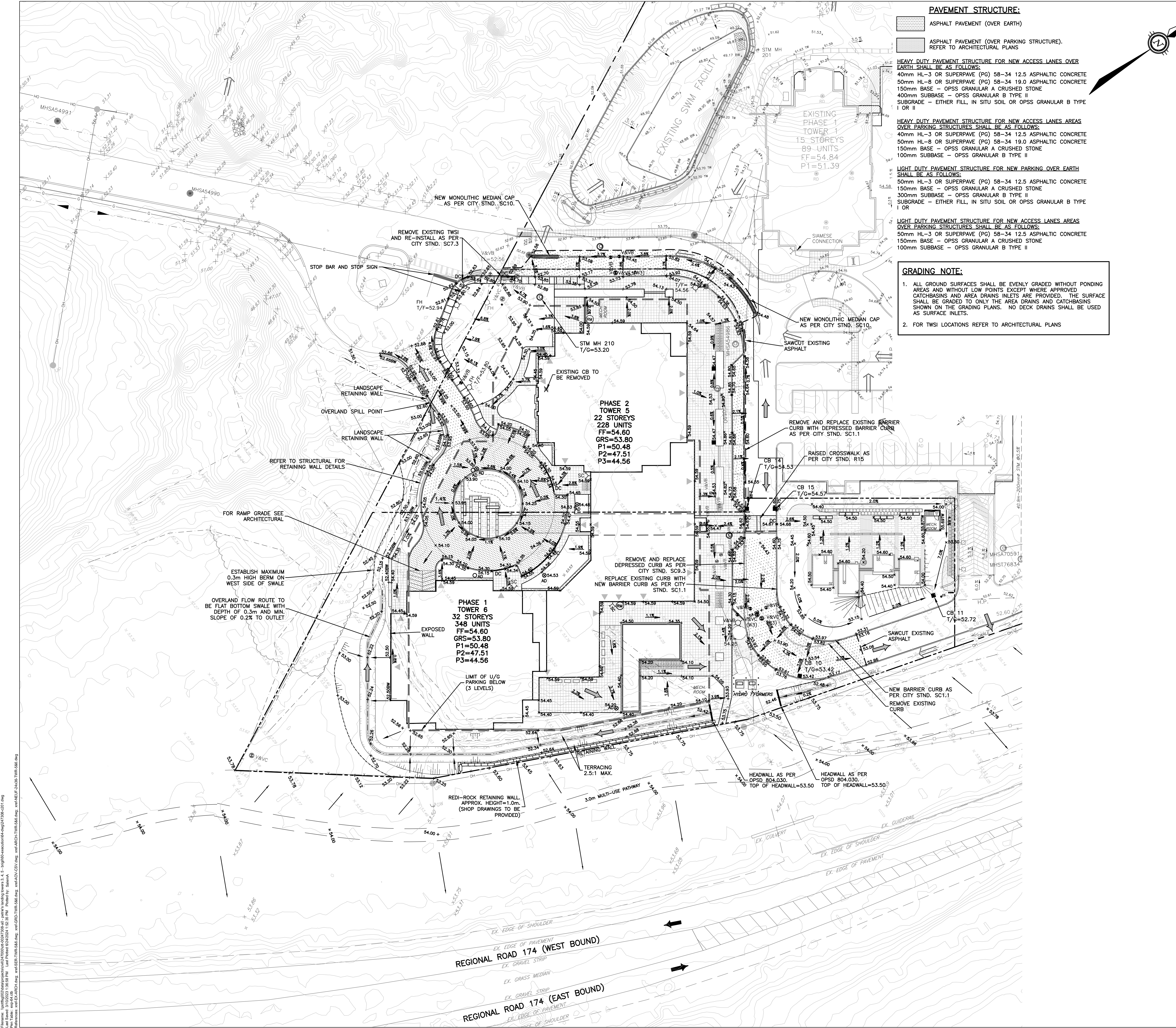
DESSIN PAR Drawn by **S.BUTLER** VÉRIFIÉ PAR Checked by **B.THOMAS**
 DATE (aa.mm.jj) 18.07.18 ECHELLE Scale 1:400

SITE GRADING PLAN TOWERS 3 & 4

TITRE DU DESSIN Drawing Title

C200
 #14602

Project: Petrie's Landing I - Phases 3-5, S. & B. Brigil
 Last Saved: 4/10/2024 11:58:11 AM Last Printed: 24/07/2024 3:50:22 PM
 Information: www.exp.com



PAVEMENT STRUCTURE:

- ASPHALT PAVEMENT (OVER EARTH)
- ASPHALT PAVEMENT (OVER PARKING STRUCTURE), REFER TO ARCHITECTURAL PLANS

HEAVY DUTY PAVEMENT STRUCTURE FOR NEW ACCESS LANES OVER EARTH SHALL BE AS FOLLOWS:
 40mm HL-3 OR SUPERPAVE (PG) 58-34 12.5 ASPHALTIC CONCRETE
 50mm HL-8 OR SUPERPAVE (PG) 58-34 19.0 ASPHALTIC CONCRETE
 150mm BASE - OPSS GRANULAR A CRUSHED STONE
 400mm SUBBASE - OPSS GRANULAR B TYPE II
 SUBGRADE - EITHER FILL, IN SITU SOIL OR OPSS GRANULAR B TYPE I OR II

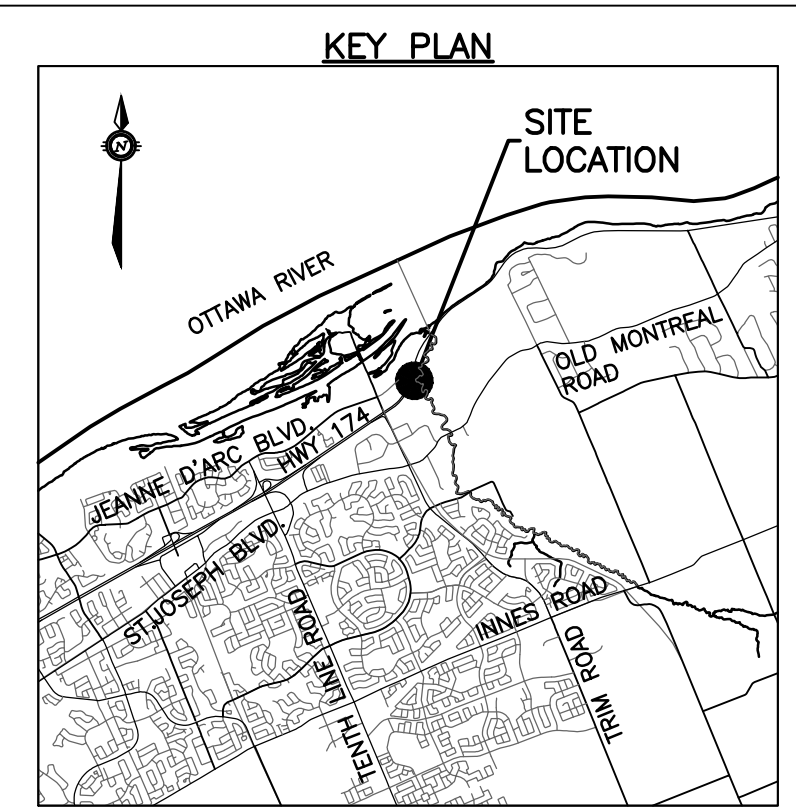
HEAVY DUTY PAVEMENT STRUCTURE FOR NEW ACCESS LANES AREAS OVER PARKING STRUCTURES SHALL BE AS FOLLOWS:
 40mm HL-3 OR SUPERPAVE (PG) 58-34 12.5 ASPHALTIC CONCRETE
 50mm HL-8 OR SUPERPAVE (PG) 58-34 19.0 ASPHALTIC CONCRETE
 150mm BASE - OPSS GRANULAR A CRUSHED STONE
 100mm SUBBASE - OPSS GRANULAR B TYPE II

LIGHT DUTY PAVEMENT STRUCTURE FOR NEW PARKING OVER EARTH SHALL BE AS FOLLOWS:
 50mm HL-3 OR SUPERPAVE (PG) 58-34 12.5 ASPHALTIC CONCRETE
 150mm BASE - OPSS GRANULAR A CRUSHED STONE
 300mm SUBBASE - OPSS GRANULAR B TYPE II
 SUBGRADE - EITHER FILL, IN SITU SOIL OR OPSS GRANULAR B TYPE I OR II

LIGHT DUTY PAVEMENT STRUCTURE FOR NEW ACCESS LANES AREAS OVER PARKING STRUCTURES SHALL BE AS FOLLOWS:
 50mm HL-3 OR SUPERPAVE (PG) 58-34 12.5 ASPHALTIC CONCRETE
 150mm BASE - OPSS GRANULAR A CRUSHED STONE
 100mm SUBBASE - OPSS GRANULAR B TYPE II

GRADING NOTE:

- ALL GROUND SURFACES SHALL BE EVENLY GRADED WITHOUT PONDING AREAS AND WITHOUT LOW POINTS EXCEPT WHERE APPROVED CATCHBASINS AND AREA DRAINS INLETS ARE PROVIDED. THE SURFACE SHALL BE GRADED TO ONLY THE AREA DRAINS AND CATCHBASINS SHOWN ON THE GRADING PLANS. NO DECK DRAINS SHALL BE USED AS SURFACE INLETS.
- FOR TWSI LOCATIONS REFER TO ARCHITECTURAL PLANS



EXISTING LEGEND

OH	OVERHEAD WIRES
UP	UTILITY POLE
LS	LIGHT STANDARD
CB	CATCHBASIN
CBE	CATCHBASIN ELBOW
CBT	CATCHBASIN TEE
AD	AREA DRAIN
T/G	TOP OF GRATE
GM	GAS METER
MH	MANHOLE (SANITARY OR STORM)
GM	GAS MAIN
V&VB	VALVE AND VALVE BOX
V&VC	VALVE AND VALVE CHAMBER
FH	FIRE HYDRANT
EX 250mm SAN	STORM SEWER
EX 300mm STM	SANITARY SEWER
EX 200mm WM	WATERMAIN
TREE	TREES
FENCE	FENCE
55.00	ORIGINAL GROUND ELEVATION
55.00	EXISTING CONTOUR
55.00	OVERLAND FLOW ROUTE

PROPOSED LEGEND

200mm SAN	PROPERTY LINE
200mm STM	SANITARY SEWER
200mm WATERMAIN	STORM SEWER
	WATERMAIN
	CLAY SEAL
STM MH 211	STORM MANHOLE
SAN MH 104	SANITARY MANHOLE
CB1	CATCHBASIN
CBE	CATCHBASIN ELBOW
CBT	CATCHBASIN TEE
AD	AREA DRAIN AND DECK DRAIN
RD	ROOF DRAIN
V&VB	VALVE AND VALVE BOX
V&VC	VALVE AND VALVE CHAMBER (W3)
FH	FIRE HYDRANT
45°	45° WATERMAIN BEND
22°	22.5° WATERMAIN BEND
11°	11.25° WATERMAIN BEND
200x150	WATERMAIN TEE (MAIN BRANCH)
200x200x200	WATERMAIN CROSS
200x150	WATERMAIN REDUCER
W	WATER METER
WM	REMOTE WATER METER READER
SC	SIAMSE CONNECTION
FF=	FLOOR ELEVATION
GRS=	GARAGE FLOOR SLAB ELEVATION
P1=	PARKING LEVEL FLOOR ELEVATION
3.0%	SLOPE AND DIRECTION OF FLOW
54.75	FINAL GRADE
H.P.	HIGH POINT
TERRACING	TERRACING
T/G=	TOP OF GRATE ELEVATION
T/F=	TOP OF FLANGE
55.00	OVERLAND FLOW ROUTE
PHASING LIMITS	PHASING LIMITS
SILT FENCE	SILT FENCE
BARRIER CURB (SC1.1)	BARRIER CURB (SC1.1)
DEPRESSED BARRIER CURB LOCATION	DEPRESSED BARRIER CURB LOCATION
SWALE AND DIRECTION OF FLOW	SWALE AND DIRECTION OF FLOW
RETAINING WALL	RETAINING WALL
BUILDING ENTRY LOCATION	BUILDING ENTRY LOCATION
STRUCTURE TO BE ADJUSTED	STRUCTURE TO BE ADJUSTED
STRUCTURE TO BE RELOCATED	STRUCTURE TO BE RELOCATED

TOPOGRAPHIC INFORMATION
 PROVIDED BY ANNIS, O'SULLIVAN, VOLLEBEKK LTD.
 DATED JULY 20, 2018

JOB BENCHMARK
 PROVIDED BY ANNIS, O'SULLIVAN, VOLLEBEKK LTD.
 NCC MONUMENT 01919680184
 NTM-NAD83 ZONE 9
 NORTHING=5040610.15
 EASTING=384736.57
 ELEVATION=52.68

CIVIL
exp SERVICES INC.
 2650 Queensway Drive, Unit 100, Ottawa, ON, K2B 8H6
 T 613 688 1899 F 613 225 7337 www.exp.com

ARCHITECTS
NEUF architect(e)s INCORPORATED
 630, rue Notre-Léopold O. Ste-Elisabeth, Montreal, QC H3B 1S6
 T 514 847 1117 NEUFarchitectes.com

SCEAU Seal

exp Services Inc.
 T: +1 613 688 1899 | F: +1 613 225 7337
 2650 Queensway Drive, Suite 100
 Ottawa, ON K2B 8H6
 Canada
 www.exp.com

exp.

• BUILDINGS • EARTH & ENVIRONMENT • ENERGY •
 • INDUSTRIAL • INFRASTRUCTURE • SUSTAINABILITY •

BRIGIL

98 Rue Lelièvre, Gatineau QC J8Y 3R7
 T 819 243 7392 www.brigil.com

PETRIE'S LANDING I - PHASES 3-5

EMPLACEMENT Location: OTTAWA, ON. NO PROJECT No: OTT-00247308-A0

NO	REVISION	DATE (aa.mm.jj)
1	ISSUED FOR REVIEW	18.08.03
2	ISSUED FOR SITE PLAN APPROVAL	18.09.14
3	ISSUED FOR CLIENT REVIEW	19.04.05
4	ISSUED FOR SITE PLAN APPROVAL	19.05.10
5	ISSUED FOR SITE PLAN APPROVAL	19.05.22
6	ISSUED FOR SPA-CITY COMMENTS	19.07.22
7	REVISED PER CITY COMMENTS	19.07.30
8	UPDATED TOWER 4	20.02.12
9	PRE-IFC FOR BRIGIL REVIEW	20.09.14
10	ISSUED FOR CONSTRUCTION	20.11.10
11	ISSUED FOR TOWER 4 BUILDING PERMIT	21.12.10
12	ISSUED FOR PERMIT UPDATE	22.03.14
13	ISSUED FOR 80% REVIEW	22.04.21
14	ISSUED FOR PERMIT	22.07.15
15	ADDITIONAL WATER SERVICE TOWER 6	22.10.18
16	ISSUED FOR TENDER	22.12.05
17	ISSUED FOR RE-TENDER	23.03.10
18	ISSUED FOR COORDINATION	23.11.08
18	ISSUED FOR APPROVAL	24.06.24

DESIGN PAR Drawn by: S.BUTLER
 DATE (aa.mm.jj): 18.07.18
 TITRE DU DESSIN Drawing Title: SITE GRADING PLAN TOWERS 5 & 6

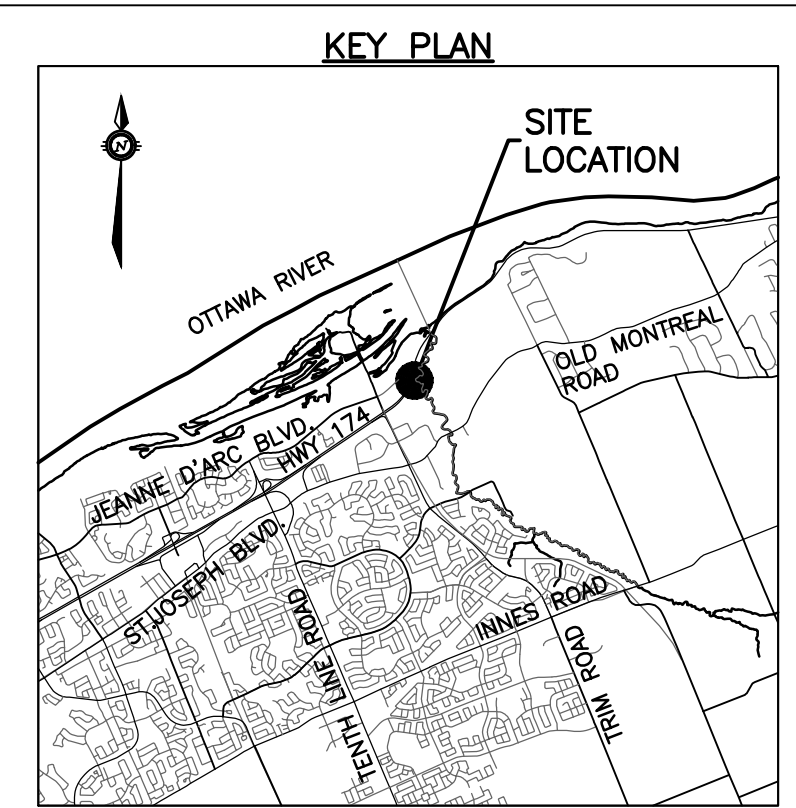
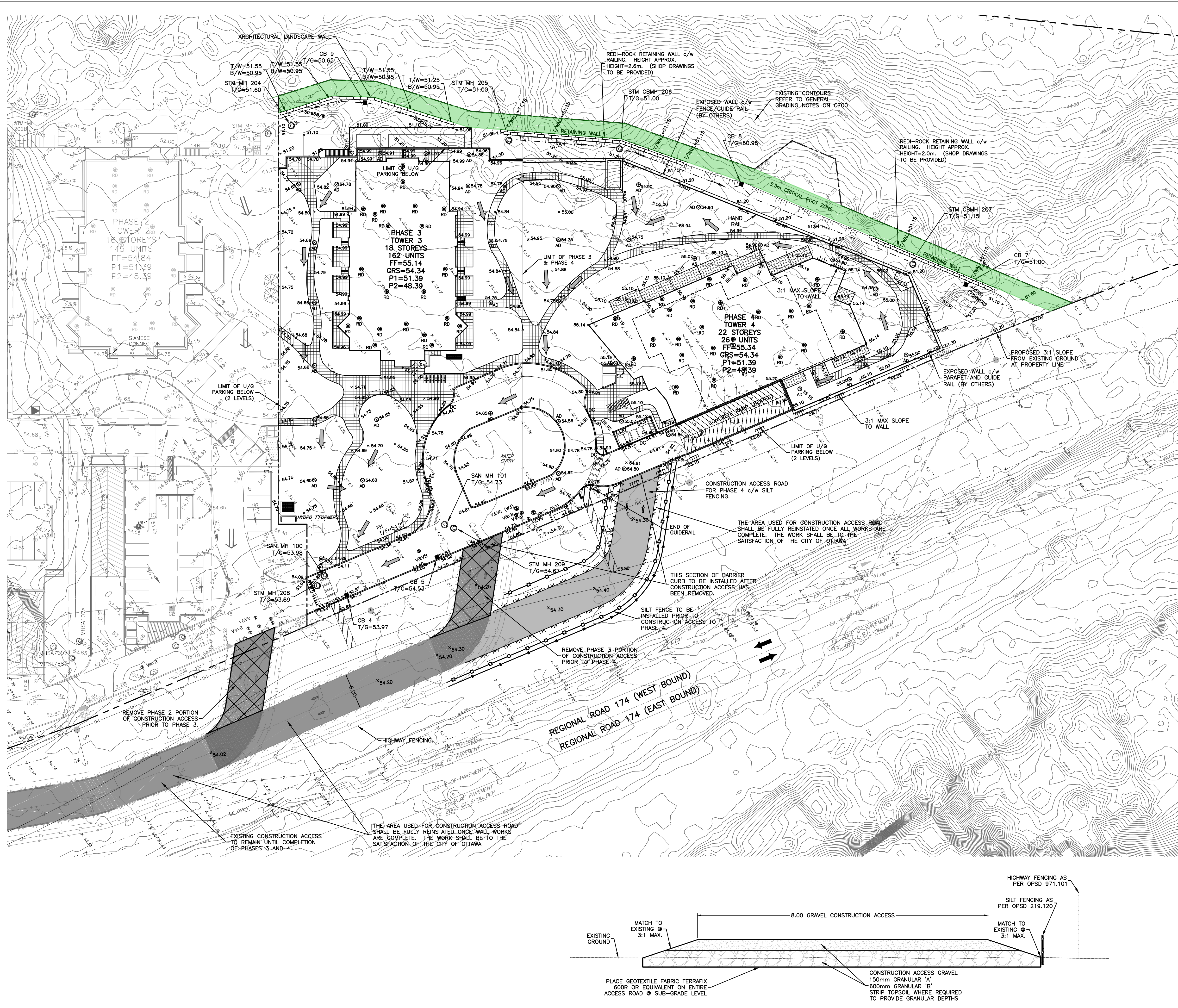
VERIFIE PAR Checked by: B.THOMAS
 ECHELLE Scale: 1:400

SITE GRADING PLAN TOWERS 5 & 6

REVISION Revision NO DESSIN Dwg Number

C201
 #14602

Project: Petrie's Landing I - Phases 3-5, S. & S. brigil@exp.com
 User: Sbutler, 31/07/2018 10:51 AM, Last Printed: 24/06/2024 1:52:28 PM, Printed by: Sbutler
 Information: www.exp.com, www.brigil.com, www.neufarchitectes.com, www.sceau.com, www.exp.com



EXISTING LEGEND

OH	OVERHEAD WIRES
UL	UTILITY POLE
LS	LIGHT STANDARD
CB	CATCHBASIN
CBE	CATCHBASIN ELBOW
CBT	CATCHBASIN TEE
AD	AREA DRAIN
T/G	TOP OF GRATE
GM	GAS METER
MH	MANHOLE (SANITARY OR STORM)
G	GAS MAIN
V&VB	VALVE AND VALVE BOX
V&VC	VALVE AND VALVE CHAMBER
FH	FIRE HYDRANT
SS	STORM SEWER
SS	SANITARY SEWER
WM	WATERMAIN
T	TREES
F	FENCE
OG	ORIGINAL GROUND ELEVATION
EX	EXISTING CONTOUR
OF	OVERLAND FLOW ROUTE

PROPOSED LEGEND

---	PROPERTY LINE
---	SANITARY SEWER
---	STORM SEWER
---	WATERMAIN
---	CLAY SEAL
○	STORM MANHOLE
○	SANITARY MANHOLE
■	CATCHBASIN
■	CATCHBASIN ELBOW
○	CATCHBASIN TEE
○	AREA DRAIN AND DECK DRAIN
○	ROOF DRAIN
○	VALVE AND VALVE BOX
○	VALVE AND VALVE CHAMBER (W3)
○	FIRE HYDRANT
~45°	45° WATERMAIN BEND
~22°	22.5° WATERMAIN BEND
~11°	11.25° WATERMAIN BEND
+	WATERMAIN TEE (MAIN BRANCH)
+	WATERMAIN CROSS
+	WATERMAIN REDUCER
U	WATER METER
U	REMOTE WATER METER READER
SC	SIAMSESE CONNECTION
FF	FLOOR ELEVATION
GRS	GARAGE FLOOR SLAB ELEVATION
P1	PARKING LEVEL FLOOR ELEVATION
3.0%	SLOPE AND DIRECTION OF FLOW
54.75	FINAL GRADE
H.P.	HIGH POINT
TERRACING	TERRACING
T/G	TOP OF GRATE ELEVATION
T/F	TOP OF FLANGE
OF	OVERLAND FLOW ROUTE
PHASING LIMITS	PHASING LIMITS
SILT FENCE	SILT FENCE
BARRIER CURB (SC.1.1)	BARRIER CURB (SC.1.1)
DC	DEPRESSED BARRIER CURB LOCATION
SWALE AND DIRECTION OF FLOW	SWALE AND DIRECTION OF FLOW
RETAINING WALL	RETAINING WALL
BUILDING ENTRY LOCATION	BUILDING ENTRY LOCATION
STRUCTURE TO BE ADJUSTED	STRUCTURE TO BE ADJUSTED
STRUCTURE TO BE RELOCATED	STRUCTURE TO BE RELOCATED

exp Services Inc.
 2650 Queenview Drive, Unit 100, Ottawa, ON, K2B 8H6
 T 613 688 1899 F 613 225 7330 www.exp.com

NEUF architect(e)s INCORPORÉ
 630, rue René-Lévesque O. Ste. Marie, Montréal QC H3B 1S6
 T 514 847 1117 NEUFArchitectes.com

exp
 • BUILDINGS • EARTH & ENVIRONMENT • ENERGY •
 • INDUSTRIAL • INFRASTRUCTURE • SUSTAINABILITY •

CLIENT: **BRIGIL**
 98 Rue Lefebvre, Gatineau QC J8Y 3R7
 T 819 243 7392 www.brigil.com

Ouvrage Project: **PETRIE'S LANDING I - PHASES 3-5**
 NO PROJECT NO: **OTT-00247308-A0**

NO	REVISION	DATE (aa.mm.jj)
1	ISSUED FOR REVIEW	18.08.03
2	ISSUED FOR SITE PLAN APPROVAL	18.09.14
3	ISSUED FOR CLIENT REVIEW	19.04.05
4	ISSUED FOR SITE PLAN APPROVAL	19.05.10
5	ISSUED FOR SITE PLAN APPROVAL	19.05.22
6	ISSUED FOR SPA-CITY COMMENTS	19.07.22
7	REVISED PER CITY COMMENTS	19.07.30
8	UPDATED TOWER 4	20.02.12
9	PRE-IFC FOR BRIGIL REVIEW	20.09.14
10	ISSUED FOR CONSTRUCTION	20.11.10
11	ISSUED FOR TOWER 4 BUILDING PERMIT	21.12.10
12	ISSUED FOR TENDER	22.02.25
13	ISSUED FOR PERMIT UPDATE	22.03.14
14	ISSUED FOR POST TENDER ADDENDUM 1	22.10.28
15	ISSUED FOR TENDER	22.12.05
16	ISSUED FOR CONSTRUCTION	22.12.16
17	ISSUED FOR COORDINATION	23.11.08
18	ISSUED FOR SI-009	23.11.17
19	ISSUED FOR APPROVAL	24.06.24

DESIGNER: S. BUTLER
 DATE: 18.07.18
 ECHELLE: 1:400

VERIFIER: B. THOMAS
 DATE: 18.07.18
 ECHELLE: 1:400

TITRE DU DESSIN: Drawing Title
 NO. DESSIN: Dwg Number
C202
 #14602

TOPOGRAPHIC INFORMATION
 PROVIDED BY ANNIS, O'SULLIVAN, VOLLEBEKK LTD.
 DATED JULY 20, 2018

JOB BENCHMARK
 PROVIDED BY ANNIS, O'SULLIVAN, VOLLEBEKK LTD.
 NCC MONUMENT 01919680184
 NTM-NADS 3 ZONE 9
 NORTHING=5040610.15
 EASTING=384736.57
 ELEVATION=52.68

ARCHITECTURE DE PAYSAGE Landscape architect

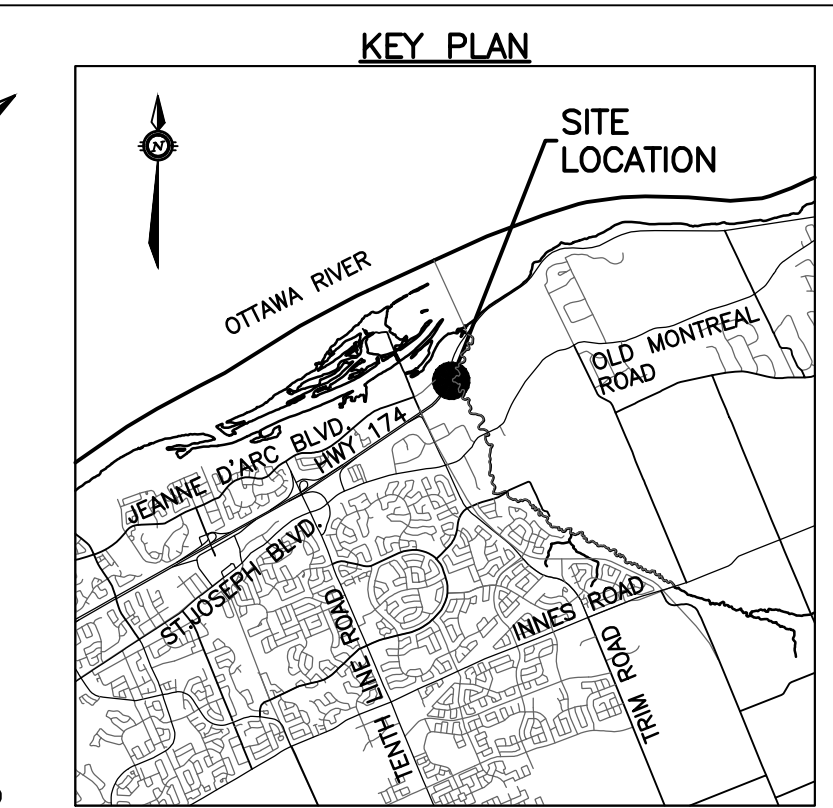
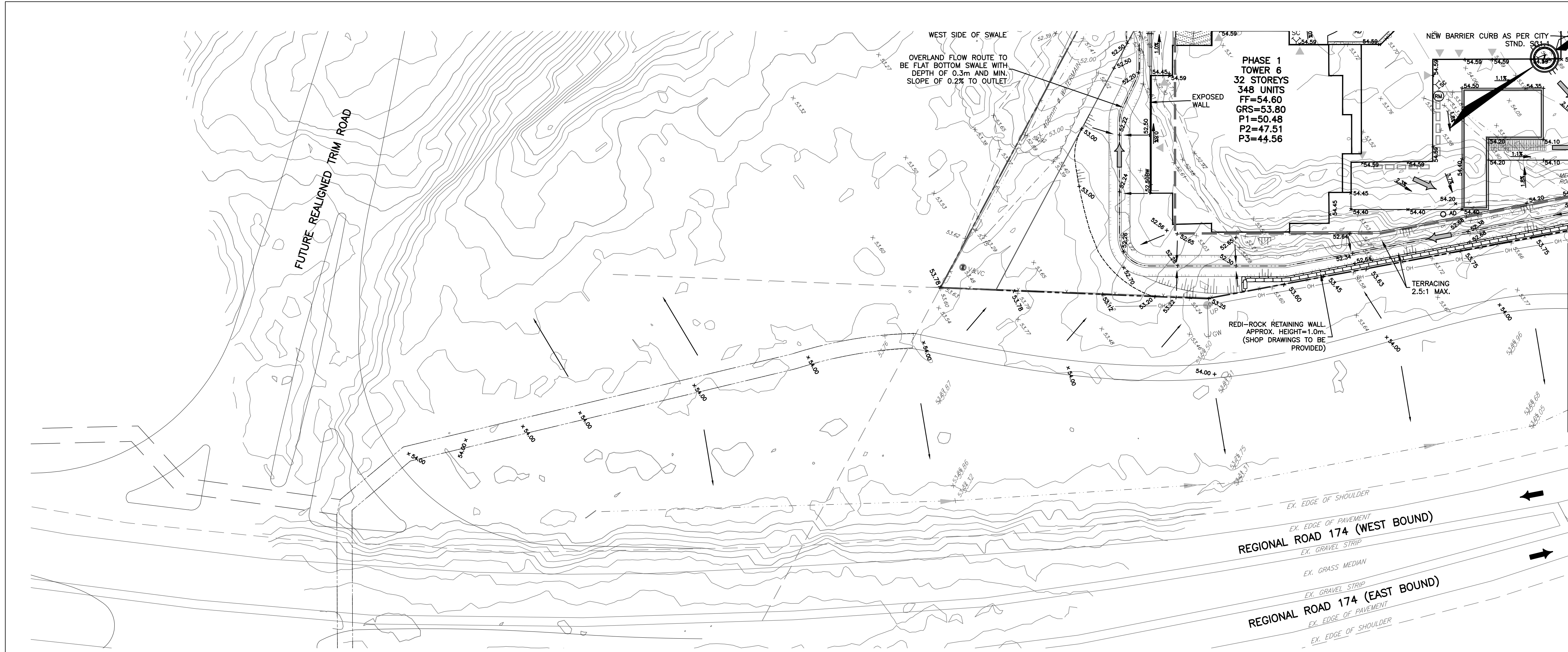
CIVIL Civil
exp SERVICES INC.
 2650 Queenview Drive, Unit 100, Ottawa, ON, K2B 8H6
 T 613 688 1899 F 613 225 7330 www.exp.com

ARCHITECTES Architect
NEUF architect(e)s INCORPORÉ
 630, rue René-Lévesque O. Ste. Marie, Montréal QC H3B 1S6
 T 514 847 1117 NEUFArchitectes.com

SCÉAU Seal

Projet: Petrie's Landing I - Phases 3-5
 Lieu: 2650 Queenview Drive, Unit 100, Ottawa, ON, K2B 8H6
 Date: 18.07.18
 Dessiné par: S. Butler
 Vérifié par: B. Thomas
 Titre: Construction Access Plan
 Échelle: 1:400

D-07-12-18-0143



TOPOGRAPHIC INFORMATION
 PROVIDED BY ANNIS, O'SULLIVAN, VOLLEBEKK LTD.
 DATED JULY 20, 2018

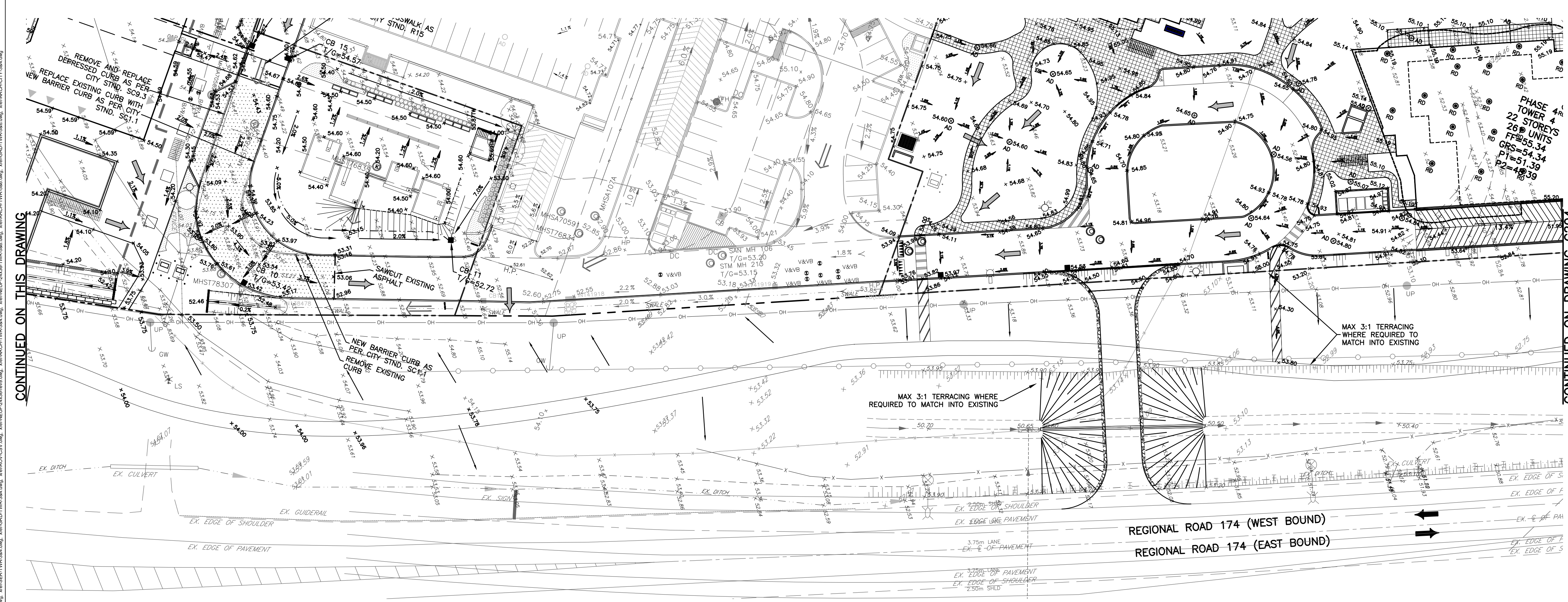
JOB BENCHMARK
 PROVIDED BY ANNIS, O'SULLIVAN, VOLLEBEKK LTD.
 NCC MONUMENT 01919680184
 NTM-NAD83 ZONE 9
 NORTHING=5040610.15
 EASTING=384736.57
 ELEVATION=52.68

EXISTING LEGEND

OH	OVERHEAD WIRES
UP	UTILITY POLE
LS	LIGHT STANDARD
CB	CATCHBASIN
CBE	CATCHBASIN ELBOW
CBT	CATCHBASIN TEE
AD	AREA DRAIN
T/G	TOP OF GRATE
GM	GAS METER
MH	MANHOLE (SANITARY OR STORM)
G	GAS MAIN
V&VB	VALVE AND VALVE BOX
V&VC	VALVE AND VALVE CHAMBER
FH	FIRE HYDRANT
EX 250mm SAN	STORM SEWER
EX 300mm STM	SANITARY SEWER
EX 200mm WM	WATERMAIN
TREE	TREES
FENCE	FENCE
55.00	ORIGINAL GROUND ELEVATION
55.00	EXISTING CONTOUR
55.00	OVERLAND FLOW ROUTE

PROPOSED LEGEND

—	PROPERTY LINE
—	SANITARY SEWER
—	STORM SEWER
—	WATERMAIN
—	CLAY SEAL
—	STORM MANHOLE
—	SANITARY MANHOLE
—	CATCHBASIN
—	CATCHBASIN ELBOW
—	CATCHBASIN TEE
—	AREA DRAIN AND DECK DRAIN
—	ROOF DRAIN
—	VALVE AND VALVE BOX
—	VALVE AND VALVE CHAMBER (W3)
—	FIRE HYDRANT
—	45° WATERMAIN BEND
—	22.5° WATERMAIN BEND
—	11.25° WATERMAIN BEND
—	WATERMAIN TEE (MAIN BRANCH)
—	WATERMAIN CROSS
—	WATERMAIN REDUCER
—	WATER METER
—	REMOTE WATER METER READER
—	SIAMESSE CONNECTION
—	FLOOR ELEVATION
—	GARAGE FLOOR SLAB ELEVATION
—	PARKING LEVEL FLOOR ELEVATION
—	SLOPE AND DIRECTION OF FLOW
—	FINAL GRADE
—	H.P.
—	HIGH POINT
—	TERRACING
—	TOP OF GRATE ELEVATION
—	TOP OF FLANGE
—	OVERLAND FLOW ROUTE
—	PHASING LIMITS
—	SILT FENCE
—	BARRIER CURB (SC1.1)
—	DEPRESSED BARRIER CURB LOCATION
—	SWALE AND DIRECTION OF FLOW
—	RETAINING WALL
—	BUILDING ENTRY LOCATION
—	STRUCTURE TO BE ADJUSTED
—	STRUCTURE TO BE RELOCATED



CONTINUED ON THIS DRAWING

CONTINUED ON DRAWING C204

exp Services Inc.
 2650 Queensway Drive, Unit 100, Ottawa, ON K2B 8H6
 T 613 688 1959 F 613 225 7330 www.exp.com

NEUF architect(e)s INCORPORÉ
 630, boulevard René-Lévesque O, 5^e étage, Montréal, QC H3B 1S6
 T 514 947 1117 NEUFArchitectes.com

exp
 • BUILDINGS • EARTH & ENVIRONMENT • ENERGY •
 • INDUSTRIAL • INFRASTRUCTURE • SUSTAINABILITY •

BRIGIL
 98 Rue Lelièvre, Gatineau QC J8Y 3R7
 T 819 243 7392 www.brigil.com

PETRIE'S LANDING I - PHASES 3-5
 OTTAWA, ON. OTT-00247308-A0

NO	REVISION	DATE (aa.mm.jj)
1	ISSUED FOR REVIEW	18.08.03
2	ISSUED FOR SITE PLAN APPROVAL	18.09.14
3	ISSUED FOR CLIENT REVIEW	19.04.05
4	ISSUED FOR SITE PLAN APPROVAL	19.05.10
5	ISSUED FOR SITE PLAN APPROVAL	19.05.22
6	ISSUED FOR SPA-CITY COMMENTS	19.07.22
7	REVISED PER CITY COMMENTS	19.07.30
8	UPDATED TOWER 4	20.02.12
9	PRE-IFC FOR BRIGIL REVIEW	20.09.14
10	ISSUED FOR CONSTRUCTION	20.11.10
11	ISSUED FOR TOWER 4 BUILDING PERMIT	21.12.10
12	ISSUED FOR PERMIT UPDATE	22.03.14
13	ISSUED FOR 80% REVIEW	22.04.21
14	ISSUED FOR PERMIT	22.07.15
15	ADDITIONAL WATER SERVICE TOWER 6	22.10.18
16	ISSUED FOR TENDER	22.12.05
17	ISSUED FOR RE-TENDER	23.03.10
18	ISSUED FOR COORDINATION	23.11.08
18	ISSUED FOR APPROVAL	24.06.24

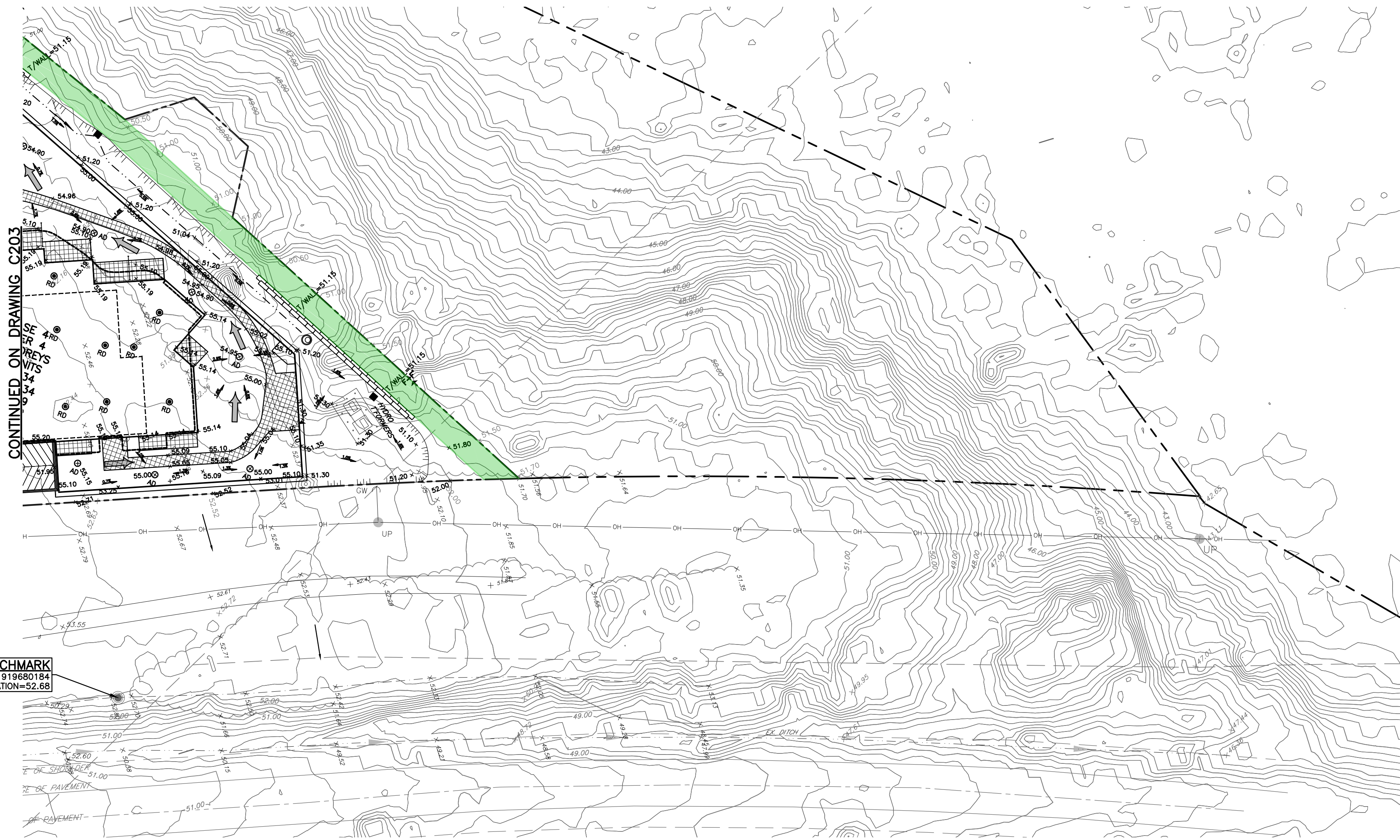
DESIGNER: S.BUTLER
 DATE: 18.07.18
 ECHELLE: 1:400

VERIFIER: B.THOMAS
 DATE: 18.07.18
 ECHELLE: 1:400

MUP GRADING PLAN

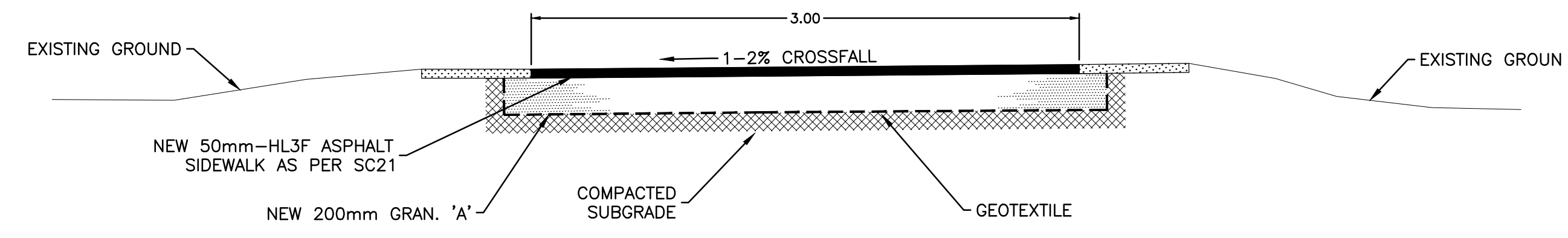
TITRE DU DESSIN Drawing Title
 NO. DESSIN Dwg Number
C203
 #14602

Project: Petrie's Landing I - Phases 3-5, 4 - Brigil
 Date: 18.07.18
 Author: S. Butler
 Checker: B. Thomas
 Scale: 1:400
 Drawing No: C203
 Project No: OTT-00247308-A0

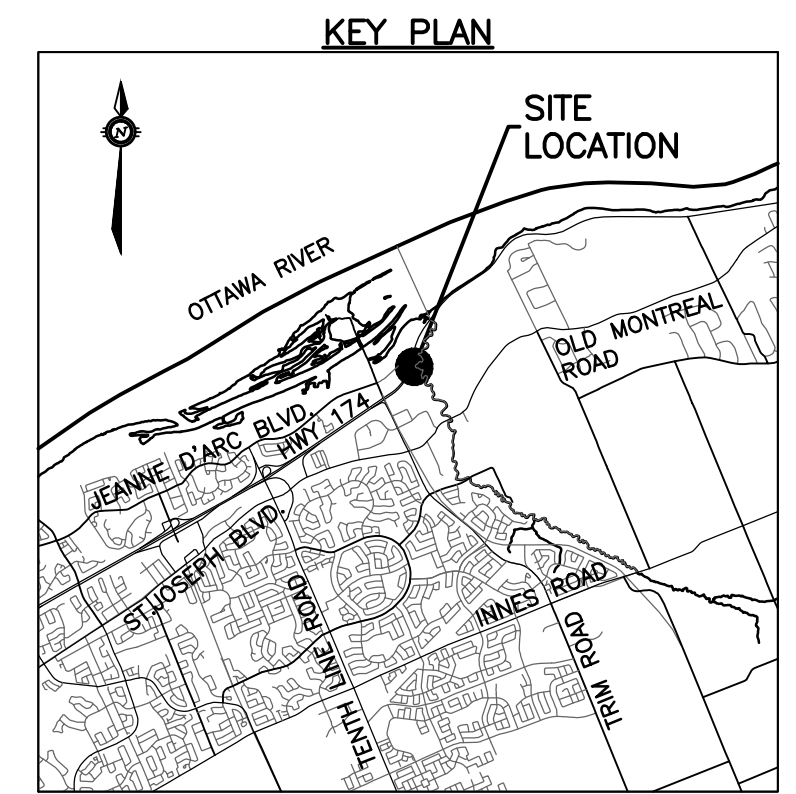


JOB BENCHMARK
NCC MONUMENT 01919680184
ELEVATION=52.68

CONTINUED ON DRAWING C203



TYPICAL MUP AS PER SC21
N.T.S.



EXISTING LEGEND

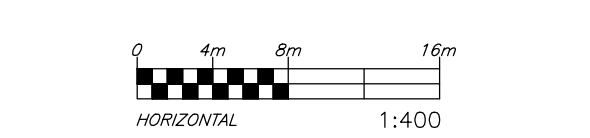
- OH OH OVERHEAD WIRES
- UP UTILITY POLE
- LS LIGHT STANDARD
- CB CATCHBASIN
- CBE CATCHBASIN ELBOW
- CBT CATCHBASIN TEE
- AD AREA DRAIN
- T/G TOP OF GRATE
- GM GAS METER
- MH MANHOLE (SANITARY OR STORM)
- G GAS MAIN
- V&VB VALVE AND VALVE BOX
- V&VC VALVE AND VALVE CHAMBER
- FH FIRE HYDRANT
- EX 250mm SAN STORM SEWER
- EX 300mm STM SANITARY SEWER
- EX 200mm WM WATERMAIN
- TREES
- FENCE
- ORIGINAL GROUND ELEVATION
- EXISTING CONTOUR
- OVERLAND FLOW ROUTE

PROPOSED LEGEND

- PROPERTY LINE
- 200mm SAN SANITARY SEWER
- 200mm STM STORM SEWER
- 200mm WM WATERMAIN
- CLAY SEAL
- STM MH 211 STORM MANHOLE
- SAN MH 104 SANITARY MANHOLE
- CB1 CATCHBASIN
- CBE CATCHBASIN ELBOW
- CBT CATCHBASIN TEE
- AD AREA DRAIN AND DECK DRAIN
- RD ROOF DRAIN
- V&VB VALVE AND VALVE BOX
- V&VC VALVE AND VALVE CHAMBER (W3)
- FH FIRE HYDRANT
- 45° 45° WATERMAIN BEND
- 22° 22.5° WATERMAIN BEND
- 11° 11.25° WATERMAIN BEND
- 200x150 WATERMAIN TEE (MAIN BRANCH)
- 200x200x200 WATERMAIN CROSS
- 200x150 WATERMAIN REDUCER
- W WATER METER
- RMW REMOTE WATER METER READER
- SC SIAMESE CONNECTION
- FF FLOOR ELEVATION
- GRS GARAGE FLOOR SLAB ELEVATION
- P1 PARKING LEVEL FLOOR ELEVATION
- 3.0% SLOPE AND DIRECTION OF FLOW
- 54.75 FINAL GRADE
- H.P. HIGH POINT
- TERRACING
- T/G TOP OF GRATE ELEVATION
- T/F TOP OF FLANGE
- OVERLAND FLOW ROUTE
- PHASING LIMITS
- SILT FENCE
- BARRIER CURB (SC1.1)
- DC DEPRESSED BARRIER CURB LOCATION
- SWALE AND DIRECTION OF FLOW
- RETAINING WALL
- BUILDING ENTRY LOCATION
- ADJ STRUCTURE TO BE ADJUSTED
- REL STRUCTURE TO BE RELOCATED

TOPOGRAPHIC INFORMATION
PROVIDED BY ANNIS, O'SULLIVAN, VOLLEBEKK LTD.
DATED JULY 20, 2018

JOB BENCHMARK
PROVIDED BY ANNIS, O'SULLIVAN, VOLLEBEKK LTD.
NCC MONUMENT 01919680184
NTM-NAD83 ZONE 9
NORTHING=5040610.15
EASTING=384736.57
ELEVATION=52.68



ARCHITECTURE DE PAYSAGE Landscape architect

CIVIL
exp SERVICES INC.
2650 Queenview Drive, Unit 100, Ottawa, ON K2B 8H6
T 613 688 1999 F 613 225 7337 www.exp.com

ARCHITECTES Architect
NEUF architect(e)s GENCL
630, boulevard Nepean, 10e étage, Montréal QC H3B 1S6
T 514 847 1117 NEUFarchitectes.com

SCEAU Seal

exp Services Inc.
T +1 613 688 1999 | F +1 613 225 7337
2650 Queenview Drive, Suite 100
Ottawa, ON K2B 8H6
Canada
www.exp.com



- BUILDINGS • EARTH & ENVIRONMENT • ENERGY •
- INDUSTRIAL • INFRASTRUCTURE • SUSTAINABILITY •

CLIENT Client
BRIGIL
98 Rue Lahaie, Gatineau QC J8Y 3R7
T 819 243 7392 www.brigit.com

PETRIE'S LANDING I - PHASES 3-5

EMPLACEMENT Location NO PROJET No
OTTAWA, ON. OTT-00247308-A0

NO	REVISION	DATE (aa.mm.jj)
1	ISSUED FOR REVIEW	18.08.03
2	ISSUED FOR SITE PLAN APPROVAL	18.09.14
3	ISSUED FOR CLIENT REVIEW	19.04.05
4	ISSUED FOR SITE PLAN APPROVAL	19.05.10
5	ISSUED FOR SITE PLAN APPROVAL	19.05.22
6	ISSUED FOR SPA-CITY COMMENTS	19.07.22
7	REVISED PER CITY COMMENTS	19.07.30
8	UPDATED TOWER 4	20.02.12
9	PRE-IFC FOR BRIGIL REVIEW	20.09.14
10	ISSUED FOR CONSTRUCTION	20.11.10
11	ISSUED FOR TOWER 4 BUILDING PERMIT	21.12.10
12	ISSUED FOR TENDER	22.02.25
13	ISSUED FOR PERMIT UPDATE	22.03.14
14	ISSUED FOR POST TENDER ADDENDUM 1	22.10.28
15	ISSUED FOR TENDER	22.12.05
16	ISSUED FOR CONSTRUCTION	22.12.16
17	ISSUED FOR COORDINATION	23.11.08
18	ISSUED FOR SI-009	23.11.17
19	ISSUED FOR APPROVAL	24.06.24

DESSIN PAR Drawn by **S.BUTLER** VERIFIE PAR Checked by **B.THOMAS**
DATE (aa.mm.jj) 18.07.18 ECHELLE Scale 1:400

MUP GRADING PLAN

RÉVISION Revision NO DESSIN Dwg Number
C204
#14602

Project: Petrie's Landing I - Phases 3-5
 Location: Ottawa, ON
 Client: Brigil
 Designer: exp Services Inc.
 Date: 18.07.18
 Scale: 1:400
 Drawing Title: MUP Grading Plan
 Drawing Number: C204
 Project Number: OTT-00247308-A0