

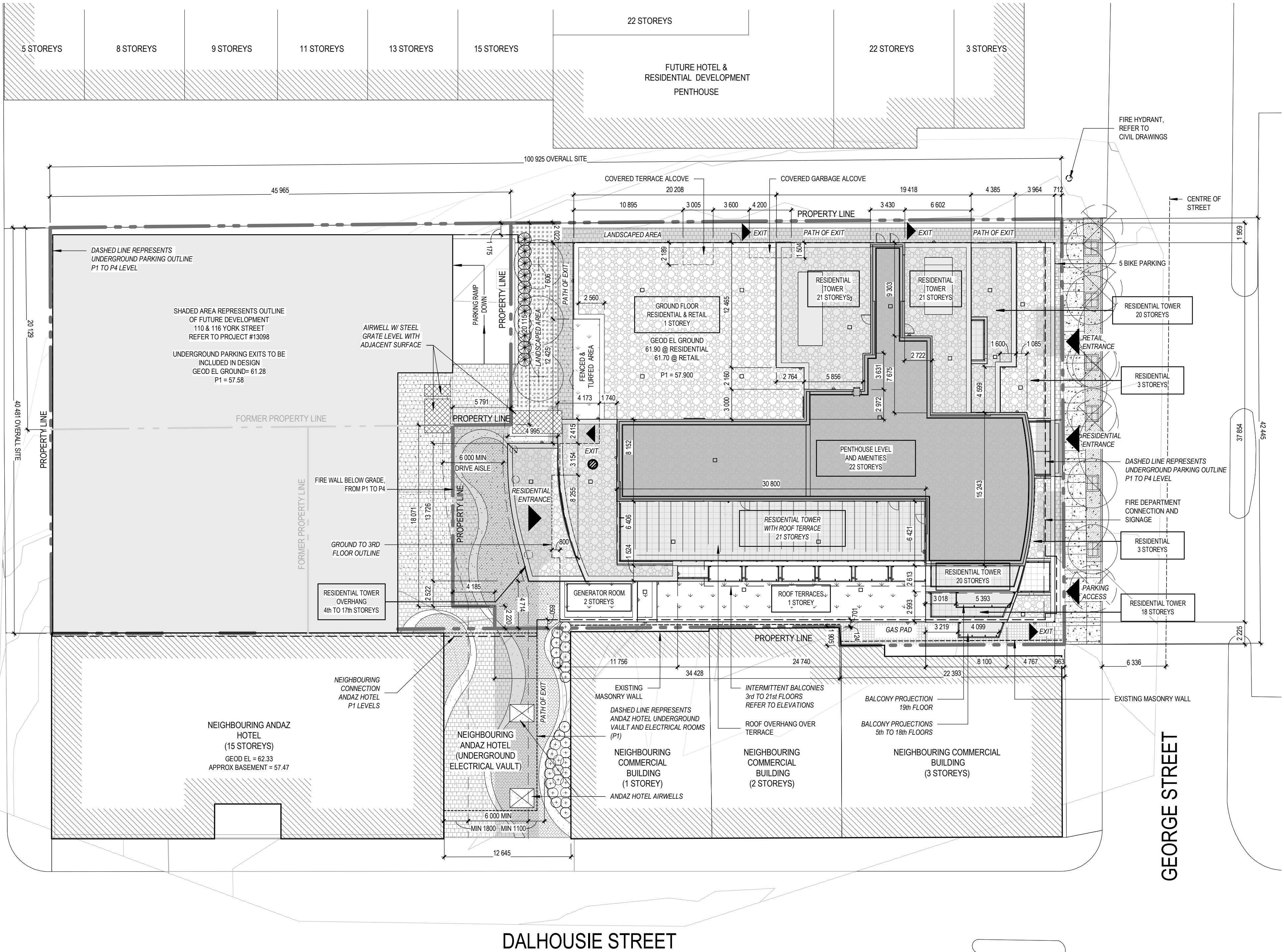
NOTES
<ul style="list-style-type: none">FOR EXISTING SITE CONDITIONS, SEE SURVEY PLAN BY ANNIS, O'SULLIVAN, VOLLEBEKK LTD., SUBMITTED SEPARATELY.FOR NEW GRADES AND SITE SERVICES, SEE CIVIL ENGINEERING PLANS BY NOVATECH ENGINEERING CONSULTANTS, SUBMITTED SEPARATELY.ZONING GFA INCLUDES AREA MEASURED FROM THE INTERIOR FACE OF EXTERIOR WALLS TO THE EXTERIOR FACE OF PARTY WALLS SEPARATING DIFFERENT USES, AS DEFINED IN CITY OF OTTAWA ZONING BY-LAW DEFINITION (2008-250).

SOLID WASTE COLLECTION REQUIREMENTS		
ZONING MECHANISM	REGULATION	PROPOSED
Residential Waste	Garbage (Compacted) = 0.053y/unit Require 16y ³ Recycling (GMP) = 0.018y/unit Require 6y ³ Recycling (Fibres) = 0.038y/unit Require 12y ³ Organics = 240L container/50 units Require 6 containers	Garbage (Compacted) = 6 x 3y ³ containers Total = 18y ³ Recycling (GMP) = 2 x 3y ³ containers Total = 6y ³ Recycling (Fibres) = 4 x 3y ³ containers Total = 12y ³ Organics = 7 x 240L containers Total = 1680L

OCCUPANCY	UNITS / STOREYS	PROPOSED ZONING GFA
Residential (Rental)	297 units / Ground to 21st floors	Ground = 1 caretaker unit = 93.9m ² (excluded) 2 nd = 16 units = 939m ² 3 rd = 16 units = 946m ² 4 th - 11 th = 15 units/floor = 934m ² / floor 12 th = 15 units = 932m ² 13 th - 17 th = 15 units/floor = 934m ² / floor 18 th = 14 units = 876m ² 19 th & 20 th = 14 units = 851m ² 21 st = 12 units = 772m ² TOTAL = 18,309m ² (without Ground)
	Minimum 15% (44 units) required to be Barrier-Free (BF) to be distributed throughout residential storeys.	8 x Studios (1BF units = 15%) 191 x 1 Bedroom (31BF units = 16%) 98 x 2 Bedroom (15BF units = 15%) 47BF units = 15%
Commercial	Ground	Commercial = 453m ² Office = 72m ²
TOTAL		18,834m²

MIXED-USE WITH GROUND FLOOR COMMERCIAL - ZONING - MD2 (2031) S307		
ZONING RULE	REQUIREMENT	PROVIDED
Minimum lot area	No minimum	3,109.10m ²
Minimum lot width	No minimum	42.45m on George Street. 40.40 on back portion.
Minimum front yard	No minimum, 1m maximum.	0.72m on George Street
Minimum interior side yard	No minimum	0.70m on West side of building. 1.94m on East side of building.
Minimum rear yard	No minimum	6.29m to one storey volume. 5.47m to 4th to 17th floor overhang.
Maximum building height	70m as per Schedule 307. No projections permitted beyond building height.	70m all inclusive.
Maximum floor space index	Not applicable	Not applicable
Minimum width of landscape area	No minimum except that where a yard is provided and not used for required driveways, aisles, parking, loading spaces, or outdoor commercial patio, the whole yard must be landscaped	Whole yard to be landscaped.
Provisions for buildings 10 storeys and higher (By-law 2019-353)	Minimum lot area for an interior lot: 1350m ² Minimum interior side and rear yard setback for a tower: 7.5m Minimum separation distance between towers on the same lot: 15m.	Minimum lot area met. Site Plan Approval received. Not applicable.
Parking Garage permission	100% of ground floor fronting a street (excluding mechanical room, pedestrian and vehicular access) for a minimum depth of 3m, must be occupied by permitted use..	100% of ground fronting George Street for a minimum depth of 3m, is occupied by permitted Commercial use and Office use.
Ground floor use	100% of ground floor fronting a street (excluding lobby area, mechanical room and access to other floors) for a minimum depth of 3m, must be occupied by select uses. Total gross area of lobbies, mechanical rooms and access to other floors must not exceed 50% of ground floor gross area. Min. 50% of ground floor to be occupied by permitted use subject to a separate area and direct access to abutting street.	100% of ground fronting George Street, for a minimum depth of 3m, is occupied by permitted Commercial use. Total gross area of lobbies, mechanical rooms and access to other floors does not exceed 50% of ground floor gross area. Area of permitted Commercial use exceeds 50% of gross floor area and has separate direct access to George Street.

AMENITY AND PARKING REQUIREMENTS ZONING - MD2 (2031) S307 (PARKING COMBINED WITH FUTURE 110 & 116 YORK STREET DEVELOPMENT)				
ZONING MECHANISM	REGULATION	ORIGINAL PROPOSAL 1 STOREY PARKING (DEC 7, 2012)	PROPOSED 5 STOREY PARKING (JUN 6, 2023)	NEWLY PROPOSED 4 STOREY PARKING (NOV 2024)
Residential Parking 141 GEORGE	None Required 6m drive aisle required.	Hotel & Condos 5 exterior 225 interior	P2 : 26 spaces P3 : 51 spaces P4 : 32 spaces P5 : 52 spaces	P3 : 44 spaces P4 : 22 spaces 6.0m drive aisle provided.
110 & 116 YORK				P3 : 41 spaces P4 : 41 spaces
Visitor Parking 141 GEORGE	Residential Area Z (By-law 2016-249); no more than 30 visitor spaces are required per building. Exception #2031, 0.083 spaces x 297 units = 25 visitor parking spaces 6m drive aisle required.		P1 : 2 spaces P2 : 23 spaces	P4 : 25 spaces 6.0m drive aisle provided.
Commercial Parking 141 GEORGE	None Required 6.7m drive aisle required.		P1 : 5 spaces.	None Required.
Hotel Parking 141 GEORGE	None Required 6m drive aisle required.		P1 : 25 spaces	P1 : 30 spaces P2 : 44 spaces 6.0m drive aisle provided.
110 & 116 YORK			P1 : 22 spaces P2 : 41 spaces	P1 : 22 spaces P2 : 41 spaces
Barrier-Free Parking 141 GEORGE	Requires 4 barrier-free spaces (Traffic and Parking By-Law 2017-301)		P1 to P5 : 2 spaces per floor Total : 10 spaces	P1 to P4 : 1 space per floor Total : 4 spaces
Minimum Bicycle Parking 141 GEORGE	Residential: 0.5 spaces x 297 units = 149 bicycle parking spaces Retail: 1 space per 250m ² of GFA 468m ² GFA / 250m ² = 2 bicycle parking spaces Hotel: 1 per 1000m ² of GFA +6,800m ² GFA/1,000m ² = 7 bicycle parking spaces Minimum 50% to be horizontal racks.	Condo 141 interior Hotel 7 exterior Total : 148 spaces	Residential: 16 (P1) 64 (P2) 66 (P3) 5 (Exterior) Retail : Total : 151 spaces	Residential: 65 (P1) 63 (P2) 31 (P3) 5 (Exterior) Total : 164 spaces
110 & 116 YORK				Hotel 9 (Interior) Total : 173 spaces 76 (44%) vertical mount.
Maximum parking	1.5 per dwelling unit Limited to 446 space for 297 units. (combined with visitor) 1 per 100m ² of Commercial gross area. Limited to 5 spaces.		Total parking spaces is under the limit.	Total parking spaces is under the limit.
Minimum driveway width	6m		6m	6m
Minimum aisle width	6m		6m	6m
Loading	Exception #2031; None Required.		NA	NA
Amenities Areas	Amenity Area - 6m ² per unit = 297 units x 6m ² = 1,782m ² Communal Amenity Area : Exception #2031; minimum 40% off the required total Amenity Area = 1,782m ² x 0.4 = minimum 713m ² Layout of Communal Amenity Area - aggregated into areas up to 54m ²		Total Balconies = 1,555m ² Ground = 35m ² 2 nd = 59m ² 3 rd = 89m ² 4 th to 17 th = 75m ² / floor 18 th = 77m ² 19 th = 85m ² 20 th = 73m ² 21 st = 65m ² Total Communal = 729m ² Ground floor = 220m ² 2 nd = 195m ² 21 st = 341m ² Total = 2,284m ²	Total Balconies = 1,727m ² 2 nd = 110m ² 3 rd = 113m ² 4 th = 95m ² 5 th to 17 th = 82m ² / floor 18 th = 80m ² 19 th = 97m ² 20 th = 84m ² 21 st = 82m ² Total Communal = 773m ² Ground floor = 432m ² 22 nd = 341m ² Total = 2,500m ²



SITE PLAN

1 : 250

1
A100

GENERAL NOTES

- These architectural documents are the exclusive property of NEUF architect(e)s inc. and cannot be used, copied, or reproduced without written pre-authorisation.
- The contractor is responsible for checking and verifying all dimensions with respect to the project. Any discrepancy shall be reported to the architect.
- The architect must be notified of all errors, omissions, and discrepancies between these documents and those of the other professionals.
- Do not scale drawings. The dimensions on these documents must be read and not measured.
- These drawings are to be read in conjunction with all material relevant to the project.

Mechanical - Electrical Engineer

JAIR
7465 Suel Danbro Crescent, 2nd Floor Mississauga, Ontario, L5N 6P8
T 905 285 9900 jainconsultants.com

Structural Engineer

Goodeve Structural Inc.
18-77 Aurora Drive, Ottawa ON K1G 7Z7
T 613 226 4556 goodevestructural.ca

Landscape Architect

James B. Lennox & Associates
3332, Carling Avenue, Ottawa, ON, K2H 5A8
T 613 722 5188 jbla.ca

Civil

Novatech Eng. Consultants Ltd.
240, Michael Coward Drive, Suite 200, Ottawa ON K2M 1P6
T 613 234 9643 novatech-eng.com

Architect

NEUF Architectes INC.
10-Healey Street, 4th floor Ottawa ON K1N 5J1
T 514 847 1117 NEUFarchitectes.com

Seal



NEUF
ARCHITECT(E)S

Client



**CLARIDGE
HOMES**

Project

141 GEORGE STREET

Location

OTTAWA

No.

12810

NO	REVISION	DATE (yyyy-mm-dd)
KK	FOR COORDINATION	2023.12.04
LL	FOR COORDINATION	2023.12.15
MM	FOR PERMIT	2023.12.21
OO	FOR COORDINATION	2024.01.23
RR	FOR COORDINATION	2024.02.26
VV	RE-ISSUED FOR PERMIT	2024.04.16
WW	FOR COORDINATION	2024.05.02
XX	FOR COORDINATION	2024.05.09
YY	FOR COORDINATION	2024.05.14
ZZ	RE-ISSUED FOR SITE PLAN APPROVAL	2024.05.16
CCC	FOR TENDER	2024.05.23
FFF	FOR REVISED FOUNDATION PERMIT	2024.07.03
III	SITE PLAN REVISION RESPONSE	2024.08.26
LLL	FOR COORDINATION	2024.10.23
MMM	SITE PLAN REVISION	2024.11.07
NNN	ISSUED FOR CONSTRUCTION	

Drawn by

SJ

Checked by

LH

DATE (aa.mm.jj)

FEB 2023

Scale
As indicated

SITE PLAN

Revision

NNN

Dwg Number

A100

Structural Engineer
Goodeve Structural Inc.
18-77 Auriga Drive, Ottawa ON K2E 7Z7
T 613 226 4558 goodevestructural.ca

Civil

Novatech Eng. Consultants Ltd.
240, Michael Cowpland Drive, Suite 200, Ottawa ON K2M 1P6
T 613 234 9643 novatech-eng.com

Architect
NEUF Architectes INC.
10 Rideau Street, 4th floor, Ottawa ON K1N 9J1
T 514 847 1117 NEUFarchitectes.com

ONTARIO ASSOCIATION
OF
ARCHITECTS
LUCIEN HARDAD
LICENCE
8286

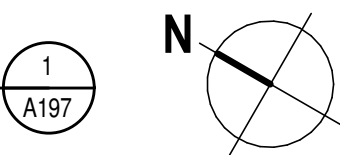
Client



Location	No.
OTTAWA	12810

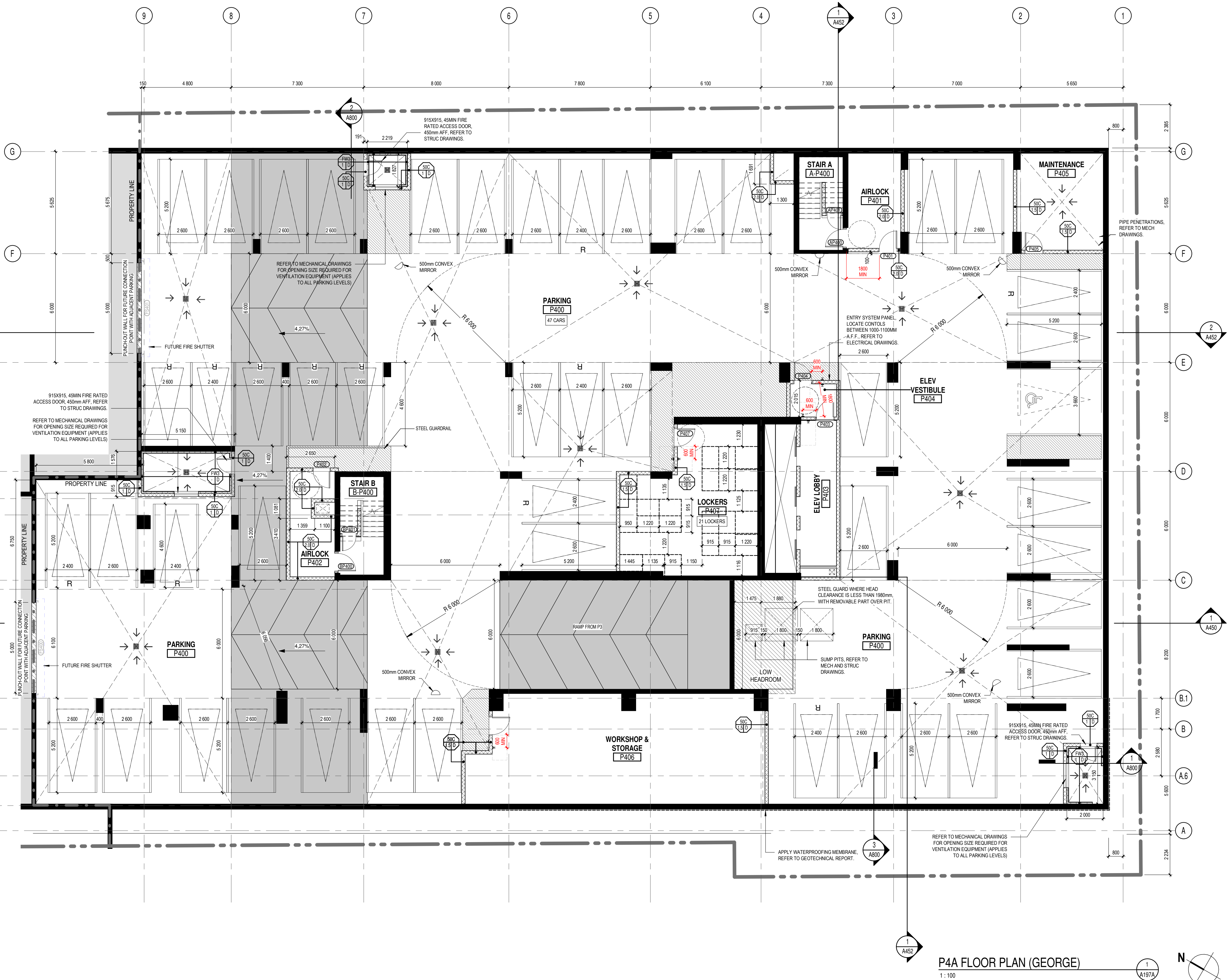
Drawn by SJ	Checked by LH
DATE (aa.mm.jj) OCT 2024	Scale 1 : 150
Drawing Title	

Revision **MMM** Dwg Number **A197**



GENERAL NOTES

1. AREAS AND DIMENSIONS ARE APPROXIMATE AND MAY CHANGE WITHOUT NOTICE. IF APPLICABLE, AREA AND LOCATION OF BALCONIES/TERRACES MAY BE CHANGED, VARIED OR MIRRORED FROM ONE FLOOR TO ANOTHER. FURNITURE IS SHOWN FOR ILLUSTRATIVE PURPOSES ONLY. UNLESS OTHERWISE NOTED, GROSS UNIT AREA IS OBTAINED ON THE DRAWINGS BY INCLUDING EXTERIOR WALLS AND HALF OF BOTH DEMISING AND CORRIDOR WALL THICKNESS. FINAL DIMENSIONS AND AREAS MAY VARY AS PER SITE CONSTRUCTION CONDITIONS WHICH CAN DIFFER FROM THE DRAWINGS PRODUCED BY NEUF ARCHITECT(E)S.
2. INSTALL PROPER BACKING AT EXTREMITIES OF WINDOWS AND PATIO DOOR HEADS FOR CURTAIN ROD INSTALLATION. BACKING TO EXTEND WINDOW EXTREMITIES BY 300mm.
3. UNLESS OTHERWISE NOTED, ALL DOORS MUST BE INSTALLED AT A MINIMUM OF 150mm AWAY FROM THE CLOSEST ADJACENT PERPENDICULAR WALL.
4. UNLESS OTHERWISE NOTED, ALL PARTITIONS MUST BE CONSTRUCTED FROM THE TOP OF THE CONCRETE SLAB UP TO THE UNDERSIDE OF THE CONCRETE SLAB (OR STEEL DECK) ABOVE.
5. ALL FIRE RATED PARTITIONS MUST BE CONSTRUCTED FROM THE TOP OF THE CONCRETE SLAB UP TO THE UNDERSIDE OF THE CONCRETE SLAB (OR STEEL DECK) ABOVE.
6. REFER TO PAGE A001 FOR ALL PARTITION ASSEMBLY TYPES AND SYMBOL LEGENDS.
7. REFER TO PAGE A004 FOR ADDITIONAL REQUIREMENTS IN RESIDENTIAL UNIT BATHROOMS.
8. REFER TO PAGE A700 FOR ALL UNIVERSAL AND BARRIER-FREE CONSTRUCTION STANDARDS AND REQUIREMENTS AS PER OBC REGULATIONS.
9. REPLACE ALL G.W.B. WITH MOISTURE-RESISTANT G.W.B. IN ALL PARTITIONS THAT ENCLOSE BATHROOMS, WASHROOMS, SHOWERS, TUB ROOM AND ANY OTHER HUMID AREA. REFER TO ARCHITECTURAL SPECIFICATIONS FOR PRODUCT DESCRIPTIONS.
10. A WATERPROOFING MEMBRANE MUST BE APPLIED TO THE MOISTURE-RESISTANT G.W.B. BEHIND THE ENTIRE SURFACE OF ANY TYPE OF TILE FINISH (CERAMIC OR OTHER) IN ALL SHOWERS, WASHROOMS AND BEHIND ANY OTHER TILE FINISH FOUND IN A HUMID AREA.
11. LAYOUTS TO BE VERIFIED WITH MECHANICAL, ELECTRICAL AND STRUCTURAL PLANS. NOTIFY THE ARCHITECT IMMEDIATELY OF ANY OMISSIONS OR DISCREPANCIES.
12. MILLWORK BY OTHERS.
13. REFER TO GEOTECHNICAL DRAWINGS FOR FOUNDATION WATERPROOFING DETAILS AND SPECIFICATIONS.
14. ARCH. RESIDENTIAL LEVEL 61 900 = GEODETIC LEVEL 61.9m
15. ARCH. RETAIL LEVEL 61 700 = GEODETIC LEVEL 61.7m
16. REFER TO ELECTRICAL DRAWINGS FOR FIRE RATED FLYWOOD BACKBOARD LOCATIONS REQUIRED ON WALLS FOR EQUIPMENT INSTALLATION.



P4A FLOOR PLAN (GEORGE)

1:100

GENERAL NOTES

1. These architectural documents are the exclusive property of NEUF architect(e)s inc. and cannot be used, copied, or reproduced without written pre-authorization.
2. The contractor is responsible for checking and verifying all dimensions with respect to the project. Any discrepancy shall be reported to the architect.
3. The architect must be notified of all errors, omissions, and discrepancies between these documents and those of the other professionals.
4. Do not scale drawings. The dimensions on these documents must be read and not measured.
5. These drawings are to be read in conjunction with all material relevant to the project.

Mechanical - Electrical Engineer

JAIN

7405 Rue Danforth Crescent, 2nd Floor Mississauga, Ontario, L5N 6P8
T 905 285 9900 jainconsultants.com

Structural Engineer

Goodeve Structural Inc.

18-77 Aurora Drive, Ottawa ON K2E 7Z7
T 613 228 4559 goodevestructural.ca

Landscape Architect

James B. Lennox & Associates

3332, Carling Avenue, Ottawa, ON, K2H 5A8
T 613 722 6188 jba.ca

Civil

Novatech Eng. Consultants Ltd.

250, Michael Coward Drive, Suite 200, Ottawa ON K2M 1P6
T 613 234 9643 novatech-eng.com

Architect

NEUF Architectes INC.

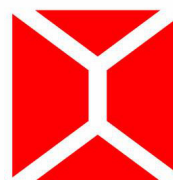
10-Rueau Street, 4th floor, Ottawa ON K1N 6J1
T 514 847 1117 NEUFarchitectes.com

Seal



NEUF

ARCHITECT(E)S



Client



**CLARIDGE
HOMES**

Project

141 GEORGE STREET

Location

OTTAWA

No.

12810

NO. REVISION

DATE (yyyy.mm.dd)

LLL FOR COORDINATION

2024.10.23

MMM SITE PLAN REVISION

2024.11.07

Drawn by

SJ

Checked by

LH

DATE (aa.mm.jj)

OCT 2024

Scale

As indicated

Drawing Title

**PARKING LEVEL 4
FLOOR PLAN (GEORGE)**

Revision

MMM

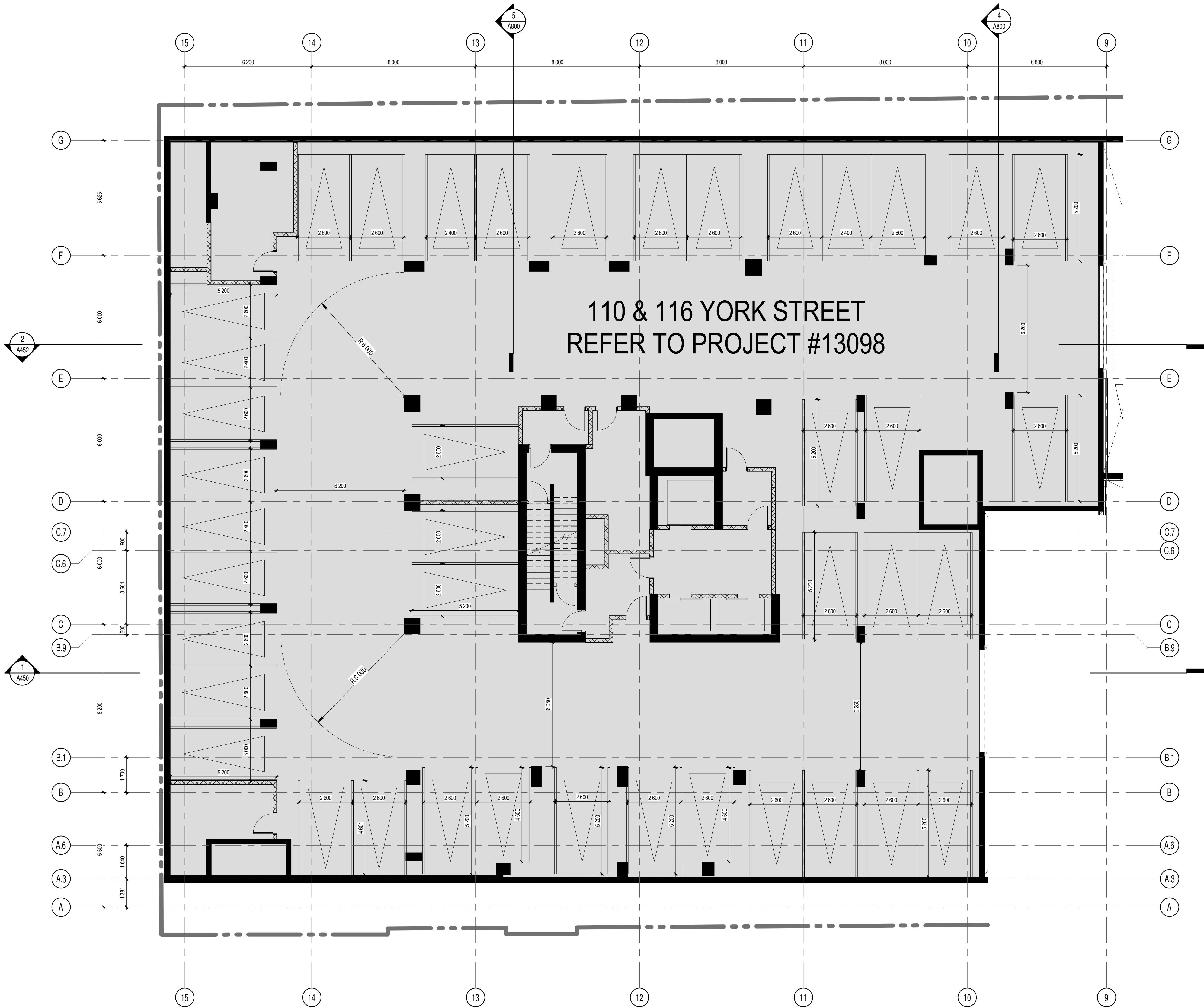
Dwg Number

A197A

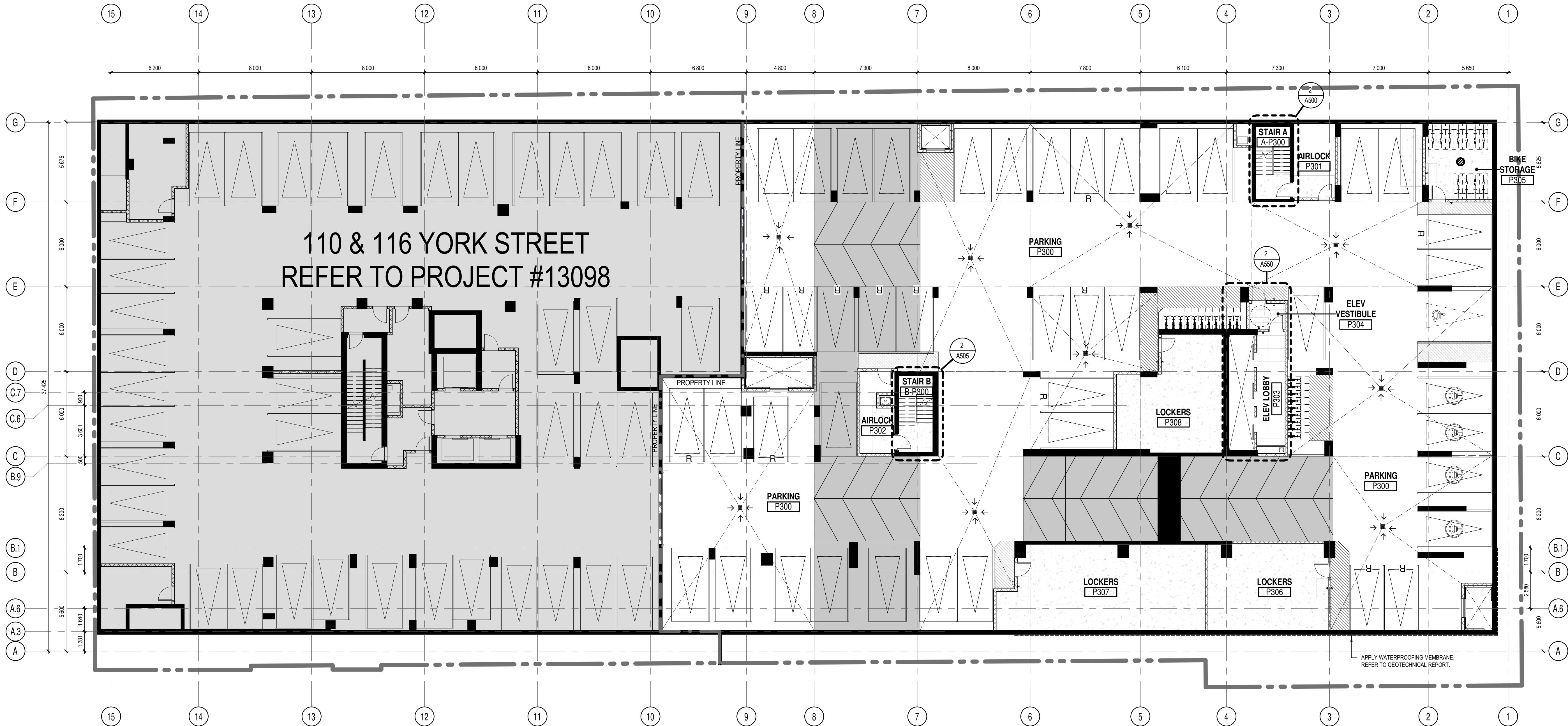
PC2024-0200
D070-12-12-0199

GENERAL NOTES

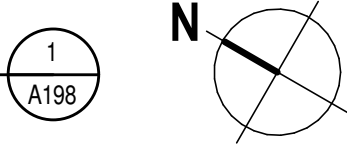
1. AREAS AND DIMENSIONS ARE APPROXIMATE AND MAY CHANGE WITHOUT NOTICE. IF APPLICABLE, AREA AND LOCATION OF BALCONIES/TERRACES MAY BE CHANGED, VARIED OR MIRRORED FROM ONE FLOOR TO ANOTHER. FURNITURE IS SHOWN FOR ILLUSTRATIVE PURPOSES ONLY. UNLESS OTHERWISE NOTED, GROSS UNIT AREA IS OBTAINED ON THE DRAWINGS BY INCLUDING EXTERIOR WALLS AND HALF OF BOTH DEMISING AND CORRIDOR WALL THICKNESS. FINAL DIMENSIONS AND AREAS MAY VARY AS PER SITE CONSTRUCTION CONDITIONS WHICH CAN DIFFER FROM THE DRAWINGS PRODUCED BY NEUF ARCHITECTE(S).
2. INSTALL PROPER BACKING AT EXTREMITIES OF WINDOWS AND PATIO DOOR HEADS FOR CURTAIN ROD INSTALLATION, BACKING TO EXTEND WINDOW EXTREMITIES BY 300mm.
3. UNLESS OTHERWISE NOTED, ALL DOORS MUST BE INSTALLED AT A MINIMUM OF 150mm AWAY FROM THE CLOSEST ADJACENT PERPENDICULAR WALL.
4. UNLESS OTHERWISE NOTED, ALL PARTITIONS MUST BE CONSTRUCTED FROM THE TOP OF THE CONCRETE SLAB UP TO THE UNDERSIDE OF THE CONCRETE SLAB (OR STEEL DECK) ABOVE.
5. ALL FIRE RATED PARTITIONS MUST BE CONSTRUCTED FROM THE TOP OF THE CONCRETE SLAB UP TO THE UNDERSIDE OF THE CONCRETE SLAB (OR STEEL DECK) ABOVE.
6. REFER TO PAGE A001 FOR ALL PARTITION ASSEMBLY TYPES AND SYMBOL LEGENDS.
7. REFER TO PAGE A004 FOR ADDITIONAL REQUIREMENTS IN RESIDENTIAL UNIT BATHROOMS.
8. REFER TO PAGE A700 FOR ALL UNIVERSAL AND BARRIER-FREE CONSTRUCTION STANDARDS AND REQUIREMENTS AS PER OBC REGULATIONS.
9. REPLACE ALL G.V.B. WITH MOISTURE-RESISTANT G.V.B. IN ALL PARTITIONS THAT ENCLOSE BATHROOMS, WASHROOMS, SHOWERS, TUB ROOM AND ANY OTHER HUMID AREA. REFER TO ARCHITECTURAL SPECIFICATIONS FOR PRODUCT DESCRIPTIONS.
10. A WATERPROOFING MEMBRANE MUST BE APPLIED TO THE MOISTURE-RESISTANT G.V.B. BEHIND THE ENTIRE SURFACE OF ANY TYPE OF TILE FINISH (CERAMIC OR OTHER) IN ALL SHOWERS, WASHROOMS AND BEHIND ANY OTHER TILE FINISH FOUND IN A HUMID AREA.
11. LAYOUTS TO BE VERIFIED WITH MECHANICAL, ELECTRICAL AND STRUCTURAL PLANS. NOTIFY THE ARCHITECT IMMEDIATELY OF ANY OMISSIONS OR DISCREPANCIES.
12. MILLWORK BY OTHERS.
13. REFER TO GEOTECHNICAL DRAWINGS FOR FOUNDATION WATERPROOFING DETAILS AND SPECIFICATIONS.
14. ARCH. RESIDENTIAL LEVEL 61.900 = GEODETIC LEVEL 61.9m
15. ARCH. RETAIL LEVEL 61.700 = GEODETIC LEVEL 61.7m
16. REFER TO ELECTRICAL DRAWINGS FOR FIRE RATED PLYWOOD BACKBOARD LOCATIONS REQUIRED ON WALLS FOR EQUIPMENT INSTALLATION.



C:\Fishiers Revit Locaux\141GS_12810_ARC_R22_splans\U643X.rvt



P3 OVERALL FLOOR PLAN
1 : 150



GENERAL NOTES

- These architectural documents are the exclusive property of NEUF architect(e)s inc. and cannot be used, copied, or reproduced without written pre-authorisation.
- The contractor is responsible for checking and verifying all dimensions with respect to the project. Any discrepancy shall be reported to the architect.
- The architect must be notified of all errors, omissions, and discrepancies between these documents and those of the other professionals.
- Do not scale drawings. The dimensions on these documents must be read and not measured.
- These drawings are to be read in conjunction with all material relevant to the project.

Mechanical - Electrical Engineer

JAIN
7405 Saint-Denis Crescent, 2nd Floor Mississauga, Ontario, L5N 6P8
T 905 285 9900 jainconsultants.com

Structural Engineer

Goodeve Structural Inc.
18-77 Aurora Drive, Ottawa, ON K2H 5A8
T 613 228 4558 goodevestructural.ca

Landscape Architect

James B. Lennox & Associates
3332 Carling Avenue, Ottawa, ON K2H 5A8
T 613 722 5188 jba.ca

Civil

Novatech Eng. Consultants Ltd.
240, Michael Coward Drive, Suite 200, Ottawa, ON K2M 1P6
T 613 234 9643 novatech-eng.com

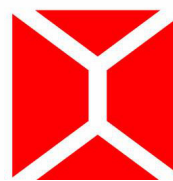
Architect

NEUF Architectes INC.
10-Réseau Street, 4th floor, Ottawa, ON K1N 6J1
T 514 847 1117 NEUFarchitectes.com

Seal



NEUF
ARCHITECT(E)S



Client



Project

141 GEORGE STREET

Location

OTTAWA

No.

12810

NO.	REVISION	DATE (yyyy.mm.dd)
TT	FOR COORDINATION	2024.04.04
WW	FOR COORDINATION	2024.05.02
XX	FOR COORDINATION	2024.05.09
YY	FOR COORDINATION	2024.05.14
ZZ	RE-ISSUED FOR SITE PLAN APPROVAL	2024.05.16
AAA	FOR COORDINATION	2024.05.21
CCC	FOR TENDER	2024.05.23
FFF	FOR REVISED FOUNDATION PERMIT	2024.07.03
III	SITE PLAN REVISION RESPONSE	2024.08.26
LLL	FOR COORDINATION	2024.10.23
MMM	SITE PLAN REVISION	2024.11.07

Drawn by

SJ

Checked by

LH

DATE (aa.mm.jj)

SEP 2022

Scale

1 : 150

Drawing Title

**PARKING LEVEL 3
FLOOR PLAN**

Revision

MMM

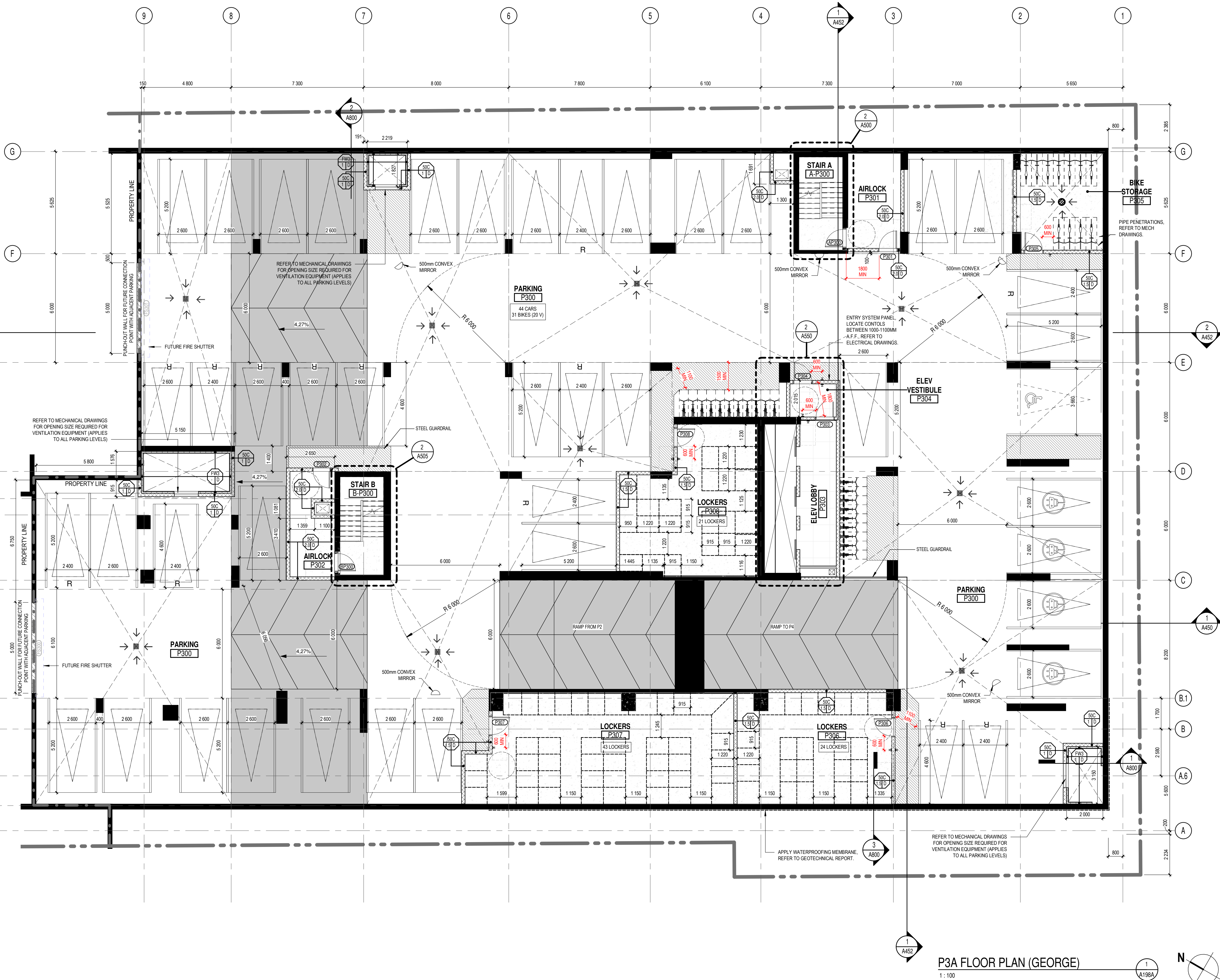
Dwg Number

A198

PC2024-0200
D070-12-12-0199
16814

GENERAL NOTES

1. AREAS AND DIMENSIONS ARE APPROXIMATE AND MAY CHANGE WITHOUT NOTICE. IF APPLICABLE, AREA AND LOCATION OF BALCONIES/TERRACES MAY BE CHANGED, VARIED OR MIRRORED FROM ONE FLOOR TO ANOTHER. FURNITURE IS SHOWN FOR ILLUSTRATIVE PURPOSES ONLY. UNLESS OTHERWISE NOTED, GROSS UNIT AREA IS OBTAINED ON THE DRAWINGS BY INCLUDING EXTERIOR WALLS AND HALF OF BOTH DEMISING AND CORRIDOR WALL THICKNESS. FINAL DIMENSIONS AND AREAS MAY VARY AS PER SITE CONSTRUCTION CONDITIONS WHICH CAN DIFFER FROM THE DRAWINGS PRODUCED BY NEUF ARCHITECT(E)S.
2. INSTALL PROPER BACKING AT EXTREMITIES OF WINDOWS AND PATIO DOOR HEADS FOR CURTAIN ROD INSTALLATION. BACKING TO EXTEND WINDOW EXTREMITIES BY 300mm.
3. UNLESS OTHERWISE NOTED, ALL DOORS MUST BE INSTALLED AT A MINIMUM OF 150mm AWAY FROM THE CLOSEST ADJACENT PERPENDICULAR WALL.
4. UNLESS OTHERWISE NOTED, ALL PARTITIONS MUST BE CONSTRUCTED FROM THE TOP OF THE CONCRETE SLAB UP TO THE UNDERSIDE OF THE CONCRETE SLAB (OR STEEL DECK) ABOVE.
5. ALL FIRE RATED PARTITIONS MUST BE CONSTRUCTED FROM THE TOP OF THE CONCRETE SLAB UP TO THE UNDERSIDE OF THE CONCRETE SLAB (OR STEEL DECK) ABOVE.
6. REFER TO PAGE A001 FOR ALL PARTITION ASSEMBLY TYPES AND SYMBOL LEGENDS.
7. REFER TO PAGE A004 FOR ADDITIONAL REQUIREMENTS IN RESIDENTIAL UNIT BATHROOMS.
8. REFER TO PAGE A700 FOR ALL UNIVERSAL AND BARRIER-FREE CONSTRUCTION STANDARDS AND REQUIREMENTS AS PER OBC REGULATIONS.
9. REPLACE ALL G.W.B. WITH MOISTURE-RESISTANT G.W.B. IN ALL PARTITIONS THAT ENCLOSE BATHROOMS, WASHROOMS, SHOWERS(S), TUB ROOM AND ANY OTHER HUMID AREA. REFER TO ARCHITECTURAL SPECIFICATIONS FOR PRODUCT DESCRIPTIONS.
10. A WATERPROOFING MEMBRANE MUST BE APPLIED TO THE MOISTURE-RESISTANT G.W.B. BEHIND THE ENTIRE SURFACE OF ANY TYPE OF TILE FINISH (CERAMIC OR OTHER) IN ALL SHOWERS, WASHROOMS AND BEHIND ANY OTHER TILE FINISH FOUND IN A HUMID AREA.
11. LAYOUTS TO BE VERIFIED WITH MECHANICAL, ELECTRICAL AND STRUCTURAL PLANS. NOTIFY THE ARCHITECT IMMEDIATELY OF ANY OMISSIONS OR DISCREPANCIES.
12. MILLWORK BY OTHERS.
13. REFER TO GEOTECHNICAL DRAWINGS FOR FOUNDATION WATERPROOFING DETAILS AND SPECIFICATIONS.
14. ARCH. RESIDENTIAL LEVEL 61 900 = GEODETIC LEVEL 61.9m
15. ARCH. RETAIL LEVEL 61 700 = GEODETIC LEVEL 61.7m
16. REFER TO ELECTRICAL DRAWINGS FOR FIRE RATED FLYWOOD BACKBOARD LOCATIONS REQUIRED ON WALLS FOR EQUIPMENT INSTALLATION.



P3A FLOOR PLAN (GEORGE)
1:100

GENERAL NOTES

1. These architectural documents are the exclusive property of NEUF architect(e)s inc. and cannot be used, copied, or reproduced without written pre-authorisation.
2. The contractor is responsible for checking and verifying all dimensions with respect to the project. Any discrepancy shall be reported to the architect.
3. The architect must be notified of all errors, omissions, and discrepancies between these documents and those of the other professionals.
4. Do not scale drawings. The dimensions on these documents must be read and not measured.
5. These drawings are to be read in conjunction with all material relevant to the project.

Mechanical - Electrical Engineer

JAIN

7455 Eglar Crescent, 2nd Floor Mississauga, Ontario, L5N 6P9
T 905 285 9900 jainconsultants.com

Structural Engineer

Goodeve Structural Inc.

18-77 Aurora Drive, Ottawa ON K2E 7Z7
T 613 228 4559 goodevestructural.ca

Landscape Architect

James B. Lennox & Associates

3332 Carling Avenue, Ottawa, ON K2H 5A8
T 613 722 5185 jba.ca

Civil

Novatech Eng. Consultants Ltd.

250, Michael Coward Drive, Suite 200, Ottawa ON K2M 1P6
T 613 234 9643 novatech-eng.com

Architect

NEUF Architectes INC.

10-Healey Street, 4th floor, Ottawa, ON K1N 6J1
T 514 847 1117 NEUFarchitectes.com

Seal



Client



**CLARIDGE
HOMES**

Project

141 GEORGE STREET

Location

OTTAWA

No.

12810

NO. REVISION

DATE (yyyy-mm-dd)

JJ	FOR COORDINATION	2023.11.27
KK	FOR COORDINATION	2023.12.04
LL	FOR COORDINATION	2023.12.15
MM	FOR PERMIT	2023.12.21
OO	FOR COORDINATION	2024.01.23
TT	FOR COORDINATION	2024.04.04
WW	FOR COORDINATION	2024.05.02
XX	FOR COORDINATION	2024.05.09
YY	FOR COORDINATION	2024.05.14
ZZ	RE-ISSUED FOR SITE PLAN APPROVAL	2024.05.16
AAA	FOR COORDINATION	2024.05.21
CCC	FOR TENDER	2024.05.29
FFF	FOR REVISED FOUNDATION PERMIT	2024.07.03
III	SITE PLAN REVISION RESPONSE	2024.08.26
LLL	FOR COORDINATION	2024.10.23
MMM	SITE PLAN REVISION	2024.11.07

Drawn by

SJ

Checked by

LH

DATE (aa.mm.jj)

SEP 2022

Scale

As indicated

Drawing Title

**PARKING LEVEL 3
FLOOR PLAN (GEORGE)**

Revision

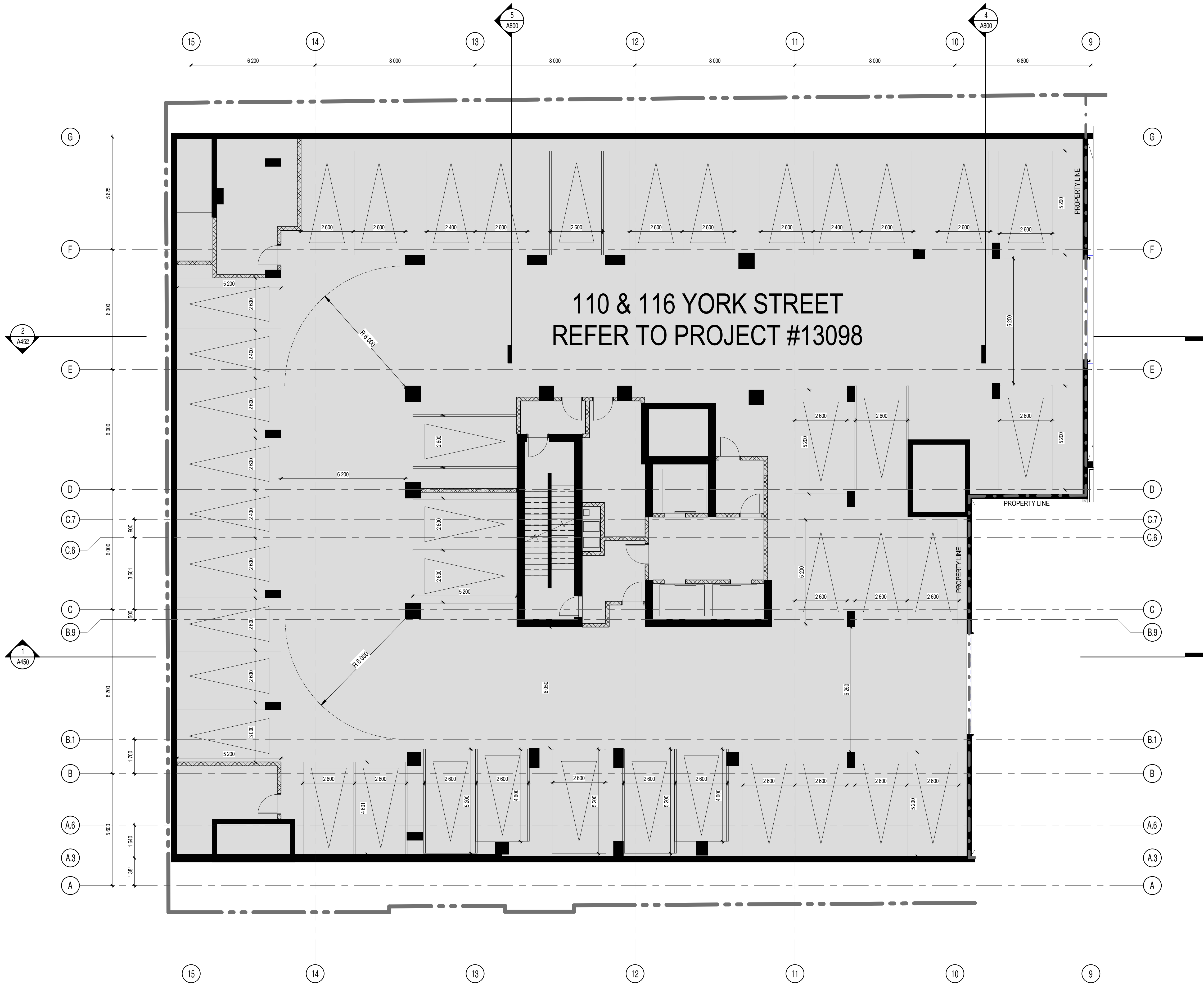
MMM

Dwg Number

A198A

GENERAL NOTES

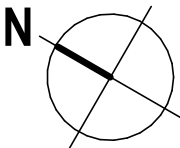
1. AREAS AND DIMENSIONS ARE APPROXIMATE AND MAY CHANGE WITHOUT NOTICE. IF APPLICABLE, AREA AND LOCATION OF BALCONIES/TERRACES MAY BE CHANGED, VARIED OR MIRRORED FROM ONE FLOOR TO ANOTHER. FURNITURE IS SHOWN FOR ILLUSTRATIVE PURPOSES ONLY. UNLESS OTHERWISE NOTED, GROSS UNIT AREA IS OBTAINED ON THE DRAWINGS BY INCLUDING EXTERIOR WALLS AND HALF OF BOTH DEMISING AND CORRIDOR WALL THICKNESS. FINAL DIMENSIONS AND AREAS MAY VARY AS PER SITE CONSTRUCTION CONDITIONS WHICH CAN DIFFER FROM THE DRAWINGS PRODUCED BY NEUF ARCHITECTE(S).
2. INSTALL PROPER BACKING AT EXTREMITIES OF WINDOWS AND PATIO DOOR HEADS FOR CURTAIN ROD INSTALLATION, BACKING TO EXTEND WINDOW EXTREMITIES BY 300mm.
3. UNLESS OTHERWISE NOTED, ALL DOORS MUST BE INSTALLED AT A MINIMUM OF 150mm AWAY FROM THE CLOSEST ADJACENT PERPENDICULAR WALL.
4. UNLESS OTHERWISE NOTED, ALL PARTITIONS MUST BE CONSTRUCTED FROM THE TOP OF THE CONCRETE SLAB UP TO THE UNDERSIDE OF THE CONCRETE SLAB (OR STEEL DECK) ABOVE.
5. ALL FIRE RATED PARTITIONS MUST BE CONSTRUCTED FROM THE TOP OF THE CONCRETE SLAB UP TO THE UNDERSIDE OF THE CONCRETE SLAB (OR STEEL DECK) ABOVE.
6. REFER TO PAGE A001 FOR ALL PARTITION ASSEMBLY TYPES AND SYMBOL LEGENDS.
7. REFER TO PAGE A004 FOR ADDITIONAL REQUIREMENTS IN RESIDENTIAL UNIT BATHROOMS.
8. REFER TO PAGE A700 FOR ALL UNIVERSAL AND BARRIER-FREE CONSTRUCTION STANDARDS AND REQUIREMENTS AS PER OBC REGULATIONS.
9. REPLACE ALL G.V.B. WITH MOISTURE-RESISTANT G.V.B. IN ALL PARTITIONS THAT ENCLOSE BATHROOMS, WASHROOMS, SHOWERS(S), TUB ROOM AND ANY OTHER HUMID AREA. REFER TO ARCHITECTURAL SPECIFICATIONS FOR PRODUCT DESCRIPTIONS.
10. A WATERPROOFING MEMBRANE MUST BE APPLIED TO THE MOISTURE-RESISTANT G.V.B. BEHIND THE ENTIRE SURFACE OF ANY TYPE OF TILE FINISH (CERAMIC OR OTHER) IN ALL SHOWERS, WASHROOMS AND BEHIND ANY OTHER TILE FINISH FOUND IN A HUMID AREA.
11. LAYOUTS TO BE VERIFIED WITH MECHANICAL, ELECTRICAL AND STRUCTURAL PLANS. NOTIFY THE ARCHITECT IMMEDIATELY OF ANY OMISSIONS OR DISCREPANCIES.
12. MILLWORK BY OTHERS.
13. REFER TO GEOTECHNICAL DRAWINGS FOR FOUNDATION WATERPROOFING DETAILS AND SPECIFICATIONS.
14. ARCH. RESIDENTIAL LEVEL 61.900 = GEODETIC LEVEL 61.9m
15. ARCH. RETAIL LEVEL 61.700 = GEODETIC LEVEL 61.7m
16. REFER TO ELECTRICAL DRAWINGS FOR FIRE RATED PLYWOOD BACKBOARD LOCATIONS REQUIRED ON WALLS FOR EQUIPMENT INSTALLATION.



P3B FLOOR PLAN (YORK)

1 : 100

1
A198B



GENERAL NOTES

1. These architectural documents are the exclusive property of NEUF architectes inc. and cannot be used, copied, or reproduced without written pre-authorisation.
2. The contractor is responsible for checking and verifying all dimensions with respect to the project. Any discrepancy shall be reported to the architect.
3. The architect must be notified of all errors, omissions, and discrepancies between these documents and those of the other professionals.
4. Do not scale drawings. The dimensions on these documents must be read and not measured.
5. These drawings are to be read in conjunction with all material relevant to the project.

Mechanical - Electrical Engineer

JAIN
7465 East Danboro Crescent, 2nd Floor Mississauga, Ontario, L5N 6P9
T 905 285 9900 jainconsultants.com

Structural Engineer

Goodeve Structural Inc.
18-77 Aurora Drive, Ottawa ON K2E 7Z7
T 613 226 4558 goodevestructural.ca

Landscape Architect

James B. Lennox & Associates
3332, Carling Avenue, Ottawa, ON, K2H 5A8
T 613 722 6168 jba.ca

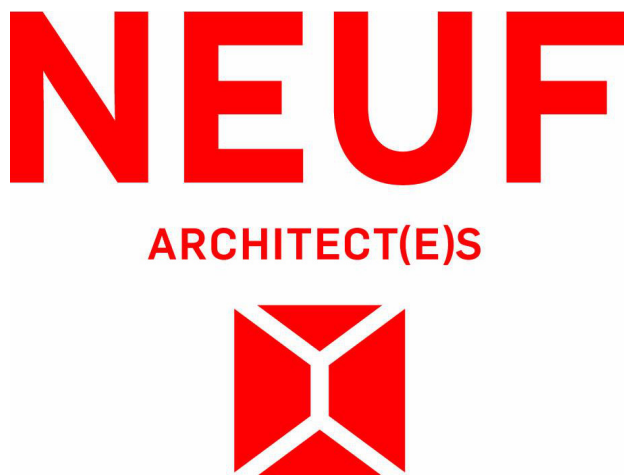
Civil

Novatech Eng. Consultants Ltd.
250, Michael Coward Road - Suite 200, Ottawa ON K2M 1P6
T 613 234 9643 novatech-eng.com

Architect

NEUF Architectes INC.
10-Rueau Street, 4th floor, Ottawa ON K1N 6J1
T 514 847 1117 NEUFarchitectes.com

Seal



Client



Project

141 GEORGE STREET

Location

OTTAWA

No

12810

NO	REVISION	DATE (yyyy.mm.dd)
TT	FOR COORDINATION	2024.04.04
WW	FOR COORDINATION	2024.05.02
XX	FOR COORDINATION	2024.05.09
YY	FOR COORDINATION	2024.05.14
ZZ	RE-ISSUED FOR SITE PLAN APPROVAL	2024.05.16
AAA	FOR COORDINATION	2024.05.21
CCC	FOR TENDER	2024.05.23
FFF	FOR REVISED FOUNDATION PERMIT	2024.07.03
III	SITE PLAN REVISION RESPONSE	2024.08.26
LLL	FOR COORDINATION	2024.10.23
MMM	SITE PLAN REVISION	2024.11.07

Drawn by

SJ

Checked by

LH

DATE (aa.mm.jj)

SEP 2022

Scale

As indicated

Drawing Title

**PARKING LEVEL 3
FLOOR PLAN (YORK)**

Revision

MMM

Dwg Number

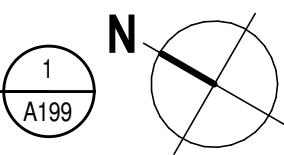
A198B

PC2024-0200
D070-12-12-0199

C:\Fichiers Revit Local\141GS_12810_ARC_R22_splansU643X.rvt



P2 OVERALL FLOOR PLAN
1 : 150



GENERAL NOTES

- These architectural documents are the exclusive property of NEUF architect(e)s inc. and cannot be used, copied, or reproduced without written pre-authorization.
- The contractor is responsible for checking and verifying all dimensions with respect to the project. Any discrepancy shall be reported to the architect.
- The architect must be notified of all errors, omissions, and discrepancies between these documents and those of the other professionals.
- Do not scale drawings. The dimensions on these documents must be read and not measured.
- These drawings are to be read in conjunction with all material relevant to the project.

Mechanical - Electrical Engineer

JAIN
7405 East Danboro Crescent, 2nd Floor Mississauga, Ontario, L5N 6P8
T 905 285 9900 jainconsultants.com

Structural Engineer

Goodeve Structural Inc.
18-77 Aurora Drive, Ottawa ON K2E 7Z7
T 613 228 4558 goodevestructural.ca

Landscape Architect

James B. Lennox & Associates
3332 Carling Avenue, Ottawa, ON, K2H 5A8
T 613 722 5188 jba.ca

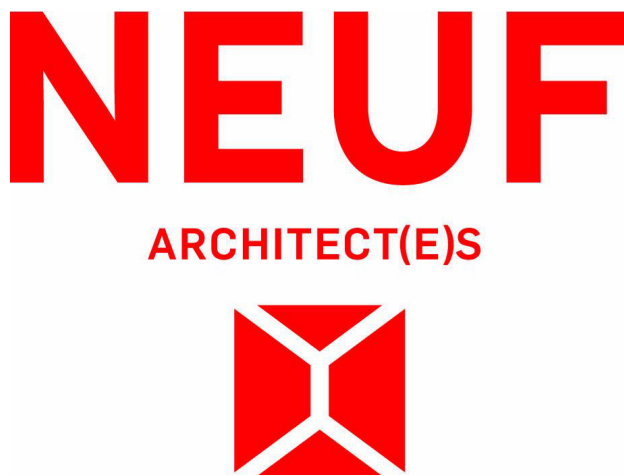
Civil

Novatech Eng. Consultants Ltd.
240, Michael Coward Drive, Suite 200, Ottawa ON K2M 1P6
T 613 234 9643 novatech-eng.com

Architect

NEUF Architectes INC.
10-Rueau Street, 4th floor, Ottawa ON K1N 6J1
T 514 847 1117 NEUFarchitectes.com

Seal



Client



Project

141 GEORGE STREET

Location

OTTAWA

No

12810

NO	REVISION	DATE (yyyy.mm.dd)
TT	FOR COORDINATION	2024.04.04
WW	FOR COORDINATION	2024.05.02
XX	FOR COORDINATION	2024.05.09
YY	FOR COORDINATION	2024.05.14
ZZ	RE-ISSUED FOR SITE PLAN APPROVAL	2024.05.16
AAA	FOR COORDINATION	2024.05.21
CCC	FOR TENDER	2024.05.23
FFF	FOR REVISED FOUNDATION PERMIT	2024.07.03
III	SITE PLAN REVISION RESPONSE	2024.08.26
LLL	FOR COORDINATION	2024.10.23
MMM	SITE PLAN REVISION	2024.11.07

Drawn by

SJ

Checked by

LC

DATE (aa.mm.jj)

FEB 2024

Scale

1 : 150

Drawing Title

**PARKING LEVEL 2
FLOOR PLAN**

Revision

MMM

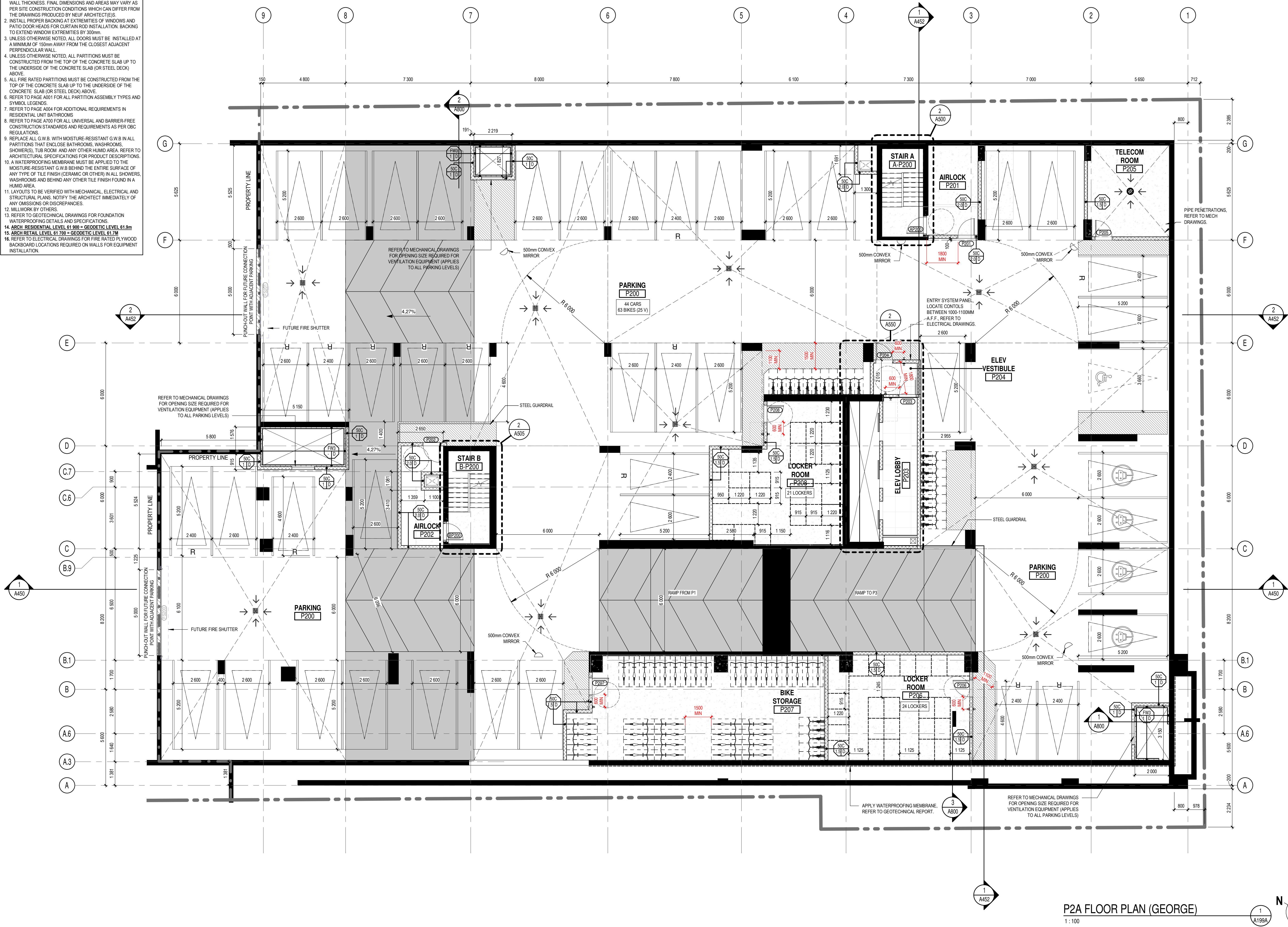
Dwg Number

A199

PC2024-0200
D070-12-12-0199

GENERAL NOTES

- AREAS AND DIMENSIONS ARE APPROXIMATE AND MAY CHANGE WITHOUT NOTICE. IF APPLICABLE, AREA AND LOCATION OF BALCONIES/TERRACES MAY BE CHANGED, VARIED OR MIRRORED FROM ONE FLOOR TO ANOTHER. FURNITURE IS SHOWN FOR ILLUSTRATIVE PURPOSES ONLY. UNLESS OTHERWISE NOTED, GROSS UNIT AREA IS OBTAINED ON THE DRAWINGS BY INCLUDING EXTERIOR WALLS AND HALF OF BOTH DEMISING AND CORRIDOR WALL THICKNESS. FINAL DIMENSIONS AND AREAS MAY VARY AS PER SITE CONSTRUCTION CONDITIONS WHICH CAN DIFFER FROM THE DRAWINGS PRODUCED BY NEUF ARCHITECTE(S).
- INSTALL PROPER BACKING AT EXTREMITIES OF WINDOWS AND PATIO DOOR HEADS FOR CURTAIN ROD INSTALLATION. BACKING TO EXTEND WINDOW EXTREMITIES BY 300mm.
- UNLESS OTHERWISE NOTED, ALL DOORS MUST BE INSTALLED AT A MINIMUM OF 150mm AWAY FROM THE CLOSEST ADJACENT PERPENDICULAR WALL.
- UNLESS OTHERWISE NOTED, ALL PARTITIONS MUST BE CONSTRUCTED FROM THE TOP OF THE CONCRETE SLAB UP TO THE UNDERSIDE OF THE CONCRETE SLAB (OR STEEL DECK) ABOVE.
- ALL FIRE RATED PARTITIONS MUST BE CONSTRUCTED FROM THE TOP OF THE CONCRETE SLAB UP TO THE UNDERSIDE OF THE CONCRETE SLAB (OR STEEL DECK) ABOVE.
- REFER TO PAGE A001 FOR ALL PARTITION ASSEMBLY TYPES AND SYMBOL LEGENDS.
- REFER TO PAGE A004 FOR ADDITIONAL REQUIREMENTS IN RESIDENTIAL UNIT BATHROOMS.
- REFER TO PAGE A700 FOR ALL UNIVERSAL AND BARRIER-FREE CONSTRUCTION STANDARDS AND REQUIREMENTS AS PER OBC REGULATIONS.
- REPLACE ALL G.W.B. WITH MOISTURE-RESISTANT G.W.B. IN ALL PARTITIONS THAT ENCLOSE BATHROOMS, WASHROOMS, SHOWERS, TUB ROOM AND ANY OTHER HUMID AREA. REFER TO ARCHITECTURAL SPECIFICATIONS FOR PRODUCT DESCRIPTIONS.
- A WATERPROOFING MEMBRANE MUST BE APPLIED TO THE MOISTURE-RESISTANT G.W.B. BEHIND THE ENTIRE SURFACE OF ANY TYPE OF TILE FINISH (CERAMIC OR OTHER) IN ALL SHOWERS, WASHROOMS AND BEHIND ANY OTHER TILE FINISH FOUND IN A HUMID AREA.
- LAYOUTS TO BE VERIFIED WITH MECHANICAL, ELECTRICAL AND STRUCTURAL PLANS. NOTIFY THE ARCHITECT IMMEDIATELY OF ANY OMISSIONS OR DISCREPANCIES.
- MILLWORK BY OTHERS.
- REFER TO GEOTECHNICAL DRAWINGS FOR FOUNDATION WATERPROOFING DETAILS AND SPECIFICATIONS.
- ARCH RESIDENTIAL LEVEL 61 900 = GEODETIC LEVEL 61.9m
- ARCH RETAIL LEVEL 61 700 = GEODETIC LEVEL 61.7m
- REFER TO ELECTRICAL DRAWINGS FOR FIRE RATED PLYWOOD BACKBOARD LOCATIONS REQUIRED ON WALLS FOR EQUIPMENT INSTALLATION.



P2A FLOOR PLAN (GEORGE)
1:100

GENERAL NOTES

- These architectural documents are the exclusive property of NEUF architect(e)s inc. and cannot be used, copied, or reproduced without written pre-authorisation.
- The contractor is responsible for checking and verifying all dimensions with respect to the project. Any discrepancy shall be reported to the architect.
- The architect must be notified of all errors, omissions, and discrepancies between these documents and those of the other professionals.
- Do not scale drawings. The dimensions on these documents must be read and not measured.
- These drawings are to be read in conjunction with all material relevant to the project.

Mechanical - Electrical Engineer

JAIN
7465-881 Danboro Crescent, 2nd Floor Mississauga, Ontario, L5N 6P6
T 905 285 9900 jainconsultants.com

Structural Engineer

Goodeve Structural Inc.
18-77 Aurora Drive, Ottawa ON K2E 7Z7
T 613 226 4559 goodevestructural.ca

Landscape Architect

James B. Lennox & Associates
3332, Carling Avenue, Ottawa, ON K2H 5A8
T 613 722 5185 jba.ca

Civil

Novatech Eng. Consultants Ltd.
250, Michael Coward Drive, Suite 200, Ottawa ON K2M 1P6
T 613 234 9643 novatech-eng.com

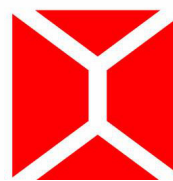
Architect

NEUF Architectes INC.
10-Rue St-Jas, 4th floor, Ottawa ON K1N 6J1
T 514 847 1117 NEUFarchitectes.com

Seal



NEUF
ARCHITECT(E)S



Client



CLARIDGE
HOMES

Project

141 GEORGE STREET

Location

OTTAWA

No

12810

NO REVISION

DATE (yyyy-mm-dd)

KK	FOR COORDINATION	2023.12.04
LL	FOR COORDINATION	2023.12.15
MM	FOR PERMIT	2023.12.21
OO	FOR COORDINATION	2024.01.23
TT	FOR COORDINATION	2024.04.04
WW	FOR COORDINATION	2024.05.02
XX	FOR COORDINATION	2024.05.09
YY	FOR COORDINATION	2024.05.14
ZZ	RE-ISSUED FOR SITE PLAN APPROVAL	2024.05.16
AAA	FOR COORDINATION	2024.05.21
CCC	FOR TENDER	2024.05.23
DDD	FOR SHORING COORDINATION	2024.06.03
FFF	FOR REVISED FOUNDATION PERMIT	2024.07.03
III	SITE PLAN REVISION RESPONSE	2024.08.26
LLL	FOR COORDINATION	2024.10.23
MMM	SITE PLAN REVISION	2024.11.07

Drawn by

SJ

Checked by

LH

DATE (aa.mm.jj)

SEP 2022

Scale

As indicated

Drawing Title

**PARKING LEVEL 2
FLOOR PLAN (GEORGE)**

Revision

MMM

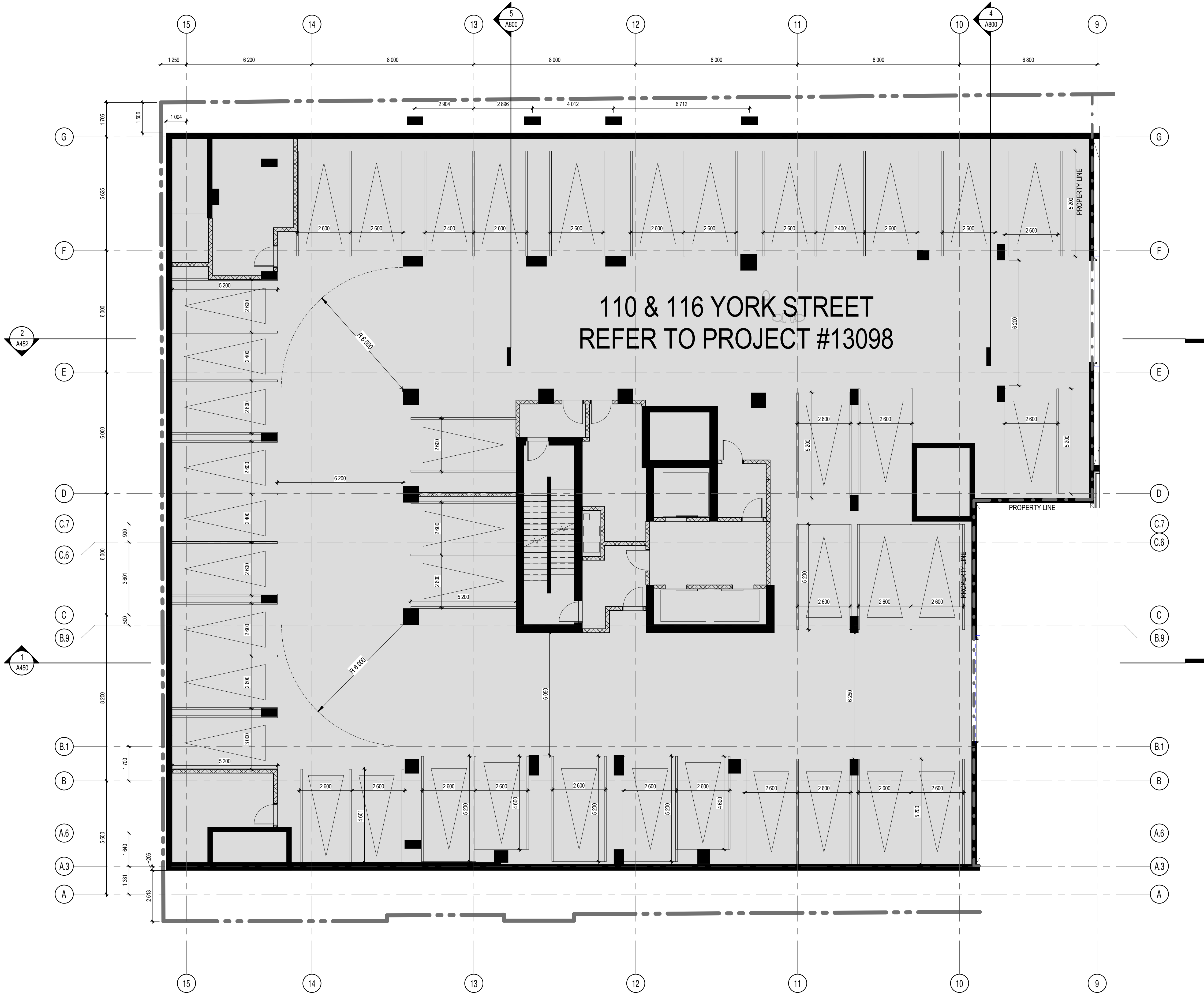
Dwg Number

A199A

D070-12-12-0199

GENERAL NOTES

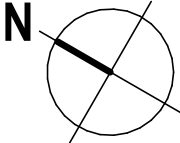
1. AREAS AND DIMENSIONS ARE APPROXIMATE AND MAY CHANGE WITHOUT NOTICE. IF APPLICABLE, AREA AND LOCATION OF BALCONIES/TERRACES MAY BE CHANGED, VARIED OR MIRRORED FROM ONE FLOOR TO ANOTHER. FURNITURE IS SHOWN FOR ILLUSTRATIVE PURPOSES ONLY. UNLESS OTHERWISE NOTED, GROSS UNIT AREA IS OBTAINED ON THE DRAWINGS BY INCLUDING EXTERIOR WALLS AND HALF OF BOTH DEMISING AND CORRIDOR WALL THICKNESS. FINAL DIMENSIONS AND AREAS MAY VARY AS PER SITE CONSTRUCTION CONDITIONS WHICH CAN DIFFER FROM THE DRAWINGS PRODUCED BY NEUF ARCHITECT(E)S.
2. INSTALL PROPER BACKING AT EXTREMITIES OF WINDOWS AND PATIO DOOR HEADS FOR CURTAIN ROD INSTALLATION. BACKING TO EXTEND WINDOW EXTREMITIES BY 300mm.
3. UNLESS OTHERWISE NOTED, ALL DOORS MUST BE INSTALLED AT A MINIMUM OF 150mm AWAY FROM THE CLOSEST ADJACENT PERPENDICULAR WALL.
4. UNLESS OTHERWISE NOTED, ALL PARTITIONS MUST BE CONSTRUCTED FROM THE TOP OF THE CONCRETE SLAB UP TO THE UNDERSIDE OF THE CONCRETE SLAB (OR STEEL DECK) ABOVE.
5. ALL FIRE RATED PARTITIONS MUST BE CONSTRUCTED FROM THE TOP OF THE CONCRETE SLAB UP TO THE UNDERSIDE OF THE CONCRETE SLAB (OR STEEL DECK) ABOVE.
6. REFER TO PAGE A001 FOR ALL PARTITION ASSEMBLY TYPES AND SYMBOL LEGENDS.
7. REFER TO PAGE A004 FOR ADDITIONAL REQUIREMENTS IN RESIDENTIAL UNIT BATHROOMS.
8. REFER TO PAGE A700 FOR ALL UNIVERSAL AND BARRIER-FREE CONSTRUCTION STANDARDS AND REQUIREMENTS AS PER OBC REGULATIONS.
9. REPLACE ALL G.V.B. WITH MOISTURE-RESISTANT G.V.B. IN ALL PARTITIONS THAT ENCLOSE BATHROOMS, WASHROOMS, SHOWERS(S), TUB ROOM AND ANY OTHER HUMID AREA. REFER TO ARCHITECTURAL SPECIFICATIONS FOR PRODUCT DESCRIPTIONS.
10. A WATERPROOFING MEMBRANE MUST BE APPLIED TO THE MOISTURE-RESISTANT G.V.B. BEHIND THE ENTIRE SURFACE OF ANY TYPE OF TILE FINISH (CERAMIC OR OTHER) IN ALL SHOWERS, WASHROOMS AND BEHIND ANY OTHER TILE FINISH FOUND IN A HUMID AREA.
11. LAYOUTS TO BE VERIFIED WITH MECHANICAL, ELECTRICAL AND STRUCTURAL PLANS. NOTIFY THE ARCHITECT IMMEDIATELY OF ANY OMISSIONS OR DISCREPANCIES.
12. MILLWORK BY OTHERS.
13. REFER TO GEOTECHNICAL DRAWINGS FOR FOUNDATION WATERPROOFING DETAILS AND SPECIFICATIONS.
14. ARCH. RESIDENTIAL LEVEL 61.900 = GEODETIC LEVEL 61.9m
15. ARCH. RETAIL LEVEL 61.700 = GEODETIC LEVEL 61.7m
16. REFER TO ELECTRICAL DRAWINGS FOR FIRE RATED PLYWOOD BACKBOARD LOCATIONS REQUIRED ON WALLS FOR EQUIPMENT INSTALLATION.



P2B FLOOR PLAN (YORK)

1 : 100

1
A199B



GENERAL NOTES

1. These architectural documents are the exclusive property of NEUF architect(e)s inc. and cannot be used, copied, or reproduced without written pre-authorisation.
2. The contractor is responsible for checking and verifying all dimensions with respect to the project. Any discrepancy shall be reported to the architect.
3. The architect must be notified of all errors, omissions, and discrepancies between these documents and those of the other professionals.
4. Do not scale drawings. The dimensions on these documents must be read and not measured.
5. These drawings are to be read in conjunction with all material relevant to the project.

Mechanical - Electrical Engineer

JAIN
7465 East Danboro Crescent, 2nd Floor Mississauga, Ontario, L5N 6P6
T 905 285 9900 jainconsultants.com

Structural Engineer

Goodeve Structural Inc.
18-77 Aurora Drive, Ottawa ON K2E 7Z7
T 613 226 4558 goodevestructural.ca

Landscape Architect

James B. Lennox & Associates
3332, Carling Avenue, Ottawa, ON, K2H 5A8
T 613 722 6188 jba.ca

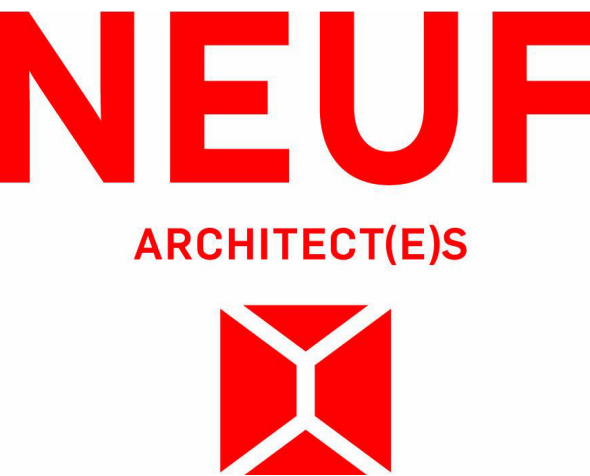
Civil

Novatech Eng. Consultants Ltd.
250, Michael Coward Road, Suite 200, Ottawa ON K2M 1P6
T 613 234 9643 novatech-eng.com

Architect

NEUF Architectes INC.
10-Rueau Street, 4th floor, Ottawa ON K1N 6J1
T 514 847 1117 NEUFarchitectes.com

Seal



Client



Project

141 GEORGE STREET

Location

OTTAWA

No

12810

NO	REVISION	DATE (yyyy.mm.dd)
TT	FOR COORDINATION	2024.04.04
WW	FOR COORDINATION	2024.05.02
XX	FOR COORDINATION	2024.05.09
YY	FOR COORDINATION	2024.05.14
ZZ	RE-ISSUED FOR SITE PLAN APPROVAL	2024.05.16
AAA	FOR COORDINATION	2024.05.21
CCC	FOR TENDER	2024.05.23
DDD	FOR SHORING COORDINATION	2024.06.03
FFF	FOR REVISED FOUNDATION PERMIT	2024.07.03
III	SITE PLAN REVISION RESPONSE	2024.08.26
LLL	FOR COORDINATION	2024.10.23
MMM	SITE PLAN REVISION	2024.11.07

Drawn by

SJ

Checked by

LH

DATE (aa.mm.jj)

FEB 2024

Scale

As indicated

Drawing Title

**PARKING LEVEL 2
FLOOR PLAN (YORK)**

Revision

MMM

Dwg Number

A199B

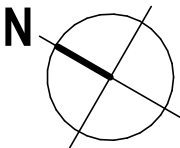
PC2024-0200
D070-12-12-0199



325 DALHOUSIE
HOTEL

P1 OVERALL FLOOR PLAN
1 : 150

1
A200



- GENERAL NOTES
- These architectural documents are the exclusive property of NEUF architect(e)s inc. and cannot be used, copied, or reproduced without written pre-authorization.
 - The contractor is responsible for checking and verifying all dimensions with respect to the project. Any discrepancy shall be reported to the architect.
 - The architect must be notified of all errors, omissions, and discrepancies between these documents and those of the other professionals.
 - Do not scale drawings. The dimensions on these documents must be read and not measured.
 - These drawings are to be read in conjunction with all material relevant to the project.

Mechanical - Electrical Engineer
JAIN
7405 East Danboro Crescent, 2nd Floor Mississauga, Ontario, L5N 6P8
T 905 285 9900 jainconsultants.com

Structural Engineer
Goodeve Structural Inc.
18-77 Aurora Drive, Ottawa ON K2E 7Z7
T 613 228 4558 goodevestructural.ca

Landscape Architect
James B. Lennox & Associates
3332, Carling Avenue, Ottawa, ON, K2H 5A8
T 613 722 6188 jba.ca

Civil
Novatech Eng. Consultants Ltd.
240, Michael Coward Drive, Suite 200, Ottawa ON K2M 1P6
T 613 234 9643 novatech-eng.com

Architect
NEUF Architectes INC.
10-Rueau Street, 4th floor, Ottawa ON K1N 6J1
T 514 847 1117 NEUFarchitectes.com

Seal



NEUF
ARCHITECT(E)S

Client



Project

141 GEORGE STREET

Location

OTTAWA 12810

NO	REVISION	DATE (yyyy.mm.dd)
TT	FOR COORDINATION	2024.04.04
WW	FOR COORDINATION	2024.05.02
XX	FOR COORDINATION	2024.05.09
YY	FOR COORDINATION	2024.05.14
ZZ	RE-ISSUED FOR SITE PLAN APPROVAL	2024.05.16
AAA	FOR COORDINATION	2024.05.21
CCC	FOR TENDER	2024.05.23
FFF	FOR REVISED FOUNDATION PERMIT	2024.07.03
GGG	FOR TENDER - ADDENDUM 02	2024.07.09
III	SITE PLAN REVISION RESPONSE	2024.08.26
LLL	FOR COORDINATION	2024.10.23
MMM	SITE PLAN REVISION	2024.11.07

Drawn by
SJ
DATE (aa.mm.jj)
SEP 2022
Drawing Title

Checked by
LH
Scale
1 : 150

**PARKING LEVEL 1
OVERALL FLOOR PLAN**

Revision
MMM
Dwg Number
A200

GENERAL NOTES

- AREAS AND DIMENSIONS ARE APPROXIMATE AND MAY CHANGE WITHOUT NOTICE. IF APPLICABLE, AREA AND LOCATION OF BALCONIES/TERRACES MAY BE CHANGED, VARIED OR MIRRORED FROM ONE FLOOR TO ANOTHER. FURNITURE IS SHOWN FOR ILLUSTRATIVE PURPOSES ONLY. UNLESS OTHERWISE NOTED, GROSS UNIT AREA IS OBTAINED ON THE DRAWINGS BY INCLUDING EXTERIOR WALLS AND HALF OF BOTH DEMISING AND CORRIDOR WALL THICKNESS. FINAL DIMENSIONS AND AREAS MAY VARY AS PER SITE CONSTRUCTION CONDITIONS WHICH CAN DIFFER FROM THE DRAWINGS PRODUCED BY NEUF ARCHITECTS.
- INSTALL PROPER BACKING AT EXTREMITIES OF WINDOWS AND PATIO DOOR HEADS FOR CURTAIN ROD INSTALLATION. BACKING TO EXTEND WINDOW EXTREMITIES BY 300mm.
- UNLESS OTHERWISE NOTED, ALL DOORS MUST BE INSTALLED AT A MINIMUM OF 150mm AWAY FROM THE CLOSEST ADJACENT PERPENDICULAR WALL.
- UNLESS OTHERWISE NOTED, ALL PARTITIONS MUST BE CONSTRUCTED FROM THE TOP OF THE CONCRETE SLAB UP TO THE UNDERSIDE OF THE CONCRETE SLAB (OR STEEL DECK) ABOVE.
- ALL FIRE RATED PARTITIONS MUST BE CONSTRUCTED FROM THE TOP OF THE CONCRETE SLAB UP TO THE UNDERSIDE OF THE CONCRETE SLAB (OR STEEL DECK) ABOVE.
- REFER TO PAGE A001 FOR ALL PARTITION ASSEMBLY TYPES AND SYMBOL LEGENDS.
- REFER TO PAGE A004 FOR ADDITIONAL REQUIREMENTS IN RESIDENTIAL UNIT BATHROOMS.
- REFER TO PAGE A700 FOR ALL UNIVERSAL AND BARRIER-FREE CONSTRUCTION STANDARDS AND REQUIREMENTS AS PER OBC REGULATIONS.
- REPLACE ALL G.W.B. WITH MOISTURE-RESISTANT G.W.B. IN ALL PARTITIONS THAT ENCLOSE BATHROOMS, WASHROOMS, SHOWERS, TUB ROOM AND ANY OTHER HUMID AREA. REFER TO ARCHITECTURAL SPECIFICATIONS FOR PRODUCT DESCRIPTIONS.
- A WATERPROOFING MEMBRANE MUST BE APPLIED TO THE MOISTURE-RESISTANT G.W.B. BEHIND THE ENTIRE SURFACE OF ANY TYPE OF TILE FINISH (CERAMIC OR OTHER) IN ALL SHOWERS, WASHROOMS AND BEHIND ANY OTHER TILE FINISH FOUND IN A HUMID AREA.
- LAYOUTS TO BE VERIFIED WITH MECHANICAL, ELECTRICAL AND STRUCTURAL PLANS. NOTIFY THE ARCHITECT IMMEDIATELY OF ANY OMISSIONS OR DISCREPANCIES.
- MILLWORK BY OTHERS.
- REFER TO GEOTECHNICAL DRAWINGS FOR FOUNDATION WATERPROOFING DETAILS AND SPECIFICATIONS.
- ARCH. RESIDENTIAL LEVEL 61 900 = GEODETIC LEVEL 61.9m
- ARCH. RETAIL LEVEL 61 700 = GEODETIC LEVEL 61.7m
- REFER TO ELECTRICAL DRAWINGS FOR FIRE RATED PLYWOOD BACKBOARD LOCATIONS REQUIRED ON WALLS FOR EQUIPMENT INSTALLATION.

GENERAL NOTES

- These architectural documents are the exclusive property of NEUF architect(e)s inc. and cannot be used, copied, or reproduced without written pre-authorisation.
- The contractor is responsible for checking and verifying all dimensions with respect to the project. Any discrepancy shall be reported to the architect.
- The architect must be notified of all errors, omissions, and discrepancies between these documents and those of the other professionals.
- Do not scale drawings. The dimensions on these documents must be read and not measured.
- These drawings are to be read in conjunction with all material relevant to the project.

Mechanical - Electrical Engineer

JAIN

7465-101 Dufferin Crescent, 2nd Floor Mississauga, Ontario, L5N 6P9
T 905.285.9900 jainconsultants.com

Structural Engineer

Goodeve Structural Inc.

18-77 Aurora Drive, Ottawa ON K2E 7Z7
T 613.228.4559 goodevestructural.ca

Landscape Architect

James B. Lennox & Associates

3332, Carling Avenue, Ottawa, ON, K2H 5A8
T 613.722.6188 jba.ca

Civil

Novatech Eng. Consultants Ltd.

250, Michael Coward Drive, Suite 200, Ottawa ON K2M 1P6
T 613.234.9643 novatech-eng.com

Architect

NEUF Architectes INC.

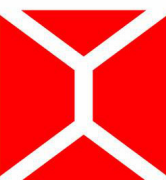
10-Rue St-Jacques, 4th floor, Ottawa ON K1N 6J1
T 514.847.1117 NEUFarchitectes.com

Seal



NEUF

ARCHITECT(E)S



Client



**CLARIDGE
HOMES**

Project

141 GEORGE STREET

Location

OTTAWA

No.

12810

NO

REVISION

DATE (yyyy-mm-dd)

MM	FOR PERMIT	2023.12.21
OO	FOR COORDINATION	2024.01.23
SS	FOR COORDINATION	2024.04.01
TT	FOR COORDINATION	2024.04.04
WW	FOR COORDINATION	2024.05.02
XX	FOR COORDINATION	2024.05.09
YY	FOR COORDINATION	2024.05.14
ZZ	RE ISSUED FOR SITE PLAN APPROVAL	2024.05.16
AAA	FOR COORDINATION	2024.05.21
CCC	FOR TENDER	2024.05.23
DDD	FOR SHORING COORDINATION	2024.06.03
FFF	FOR REVISED FOUNDATION PERMIT	2024.07.03
GGG	FOR TENDER - ADDENDUM 02	2024.07.09
III	SITE PLAN REVISION RESPONSE	2024.08.26
LLL	FOR COORDINATION	2024.10.23
MMM	SITE PLAN REVISION	2024.11.07

Drawn by

SJ

DATE (aa.mm.jj)

SEP 2022

Drawing Title

**PARKING LEVEL 1
FLOOR PLAN (GEORGE)**

Revision

MMM

Dwg Number

A200A

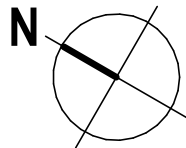
Scale

As indicated

PC2024-0200

D070-12-12-0199

3. AREAS AND DIMENSIONS ARE APPROXIMATE AND MAY CHANGE WITHOUT NOTICE. IF APPLICABLE, AREA AND LOCATION OF BALCONIES/TERRACES MAY BE CHANGED, VARED OR MIRRORED TO ACCOMMODATE FLOOR TO FLOOR VERTICAL CLEARANCE. FOR ILLUSTRATIVE PURPOSES ONLY. UNLESS OTHERWISE NOTED, GROSS UNIT AREA IS OBTAINED ON THE DRAWINGS BY INCLUDING AND EXCLUDING ALL WALLS, PARTITIONS, DOORS, AND CORNER WALL THICKNESS. FINAL DIMENSIONS AND AREAS MAY VARY AS PER SITE CONSTRUCTION CONDITIONS WHICH MAY DIFFER FROM THE DRAWINGS PRODUCED BY NEUF ARCHITECTS.
4. UNLESS OTHERWISE NOTED, ALL PARTITIONS MUST BE CONSTRUCTED FROM THE TOP OF THE CONCRETE SLAB UP TO THE UNDERSIDE OF THE CONCRETE SLAB (OR STEEL DECK) ABOVE.
5. ALL FIRE RATED PARTITIONS MUST BE CONSTRUCTED FROM THE TOP OF THE CONCRETE SLAB UP TO THE UNDERSIDE OF THE CONCRETE SLAB (OR STEEL DECK) ABOVE.
6. REFER TO PAGE A001 FOR PARTITION ASSEMBLY TYPES AND SYMBOLS LEGEND.
7. REFER TO PAGE A004 FOR ADDITIONAL REQUIREMENTS IN RESIDENTIAL UNIT BATHROOMS.
8. REFER TO PAGE A008 FOR UNIVERSAL AND BARRIER-FREE CONSTRUCTION STANDARDS AND REQUIREMENTS AS PER CBC REGULATIONS.
9. REFACE ALL G.W.B. WITH MOISTURE-RESISTANT G.W.B. IN ALL PARTITIONS THAT ENCLOSE BATHROOMS, WASHROOMS, SHOWERS, TUB ROOM, AND ANY OTHER HUMID AREA. REFER TO ARCHITECTURAL SPECIFICATIONS FOR PRODUCT DESCRIPTIONS.
10. APPLY MOISTURE-RESISTANT G.W.B. TO BE APPLIED TO THE MOISTURE-RESISTANT G.W.B. BEHIND THE ENTIRE SURFACE OF ANY TYPE OF TILE FINISH (CERAMIC OR OTHER) IN ALL SHOWERS, WASHROOMS AND BEHIND ANY OTHER TILE FINISH FOUND IN A HUMID AREA.
11. LAYOUTS TO BE VERIFIED WITH MECHANICAL, ELECTRICAL, AND STRUCTURAL PLANS. NOTIFY THE ARCHITECT IMMEDIATELY OF ANY CONFLICTS OR DISCREPANCIES.
12. MILL WORK BY OTHERS.
13. REFER TO GEOTECHNICAL DRAWINGS FOR FOUNDATION AND DRAINAGE PROTECTING DETAILS.
14. **ARCH RETAIL LEVEL 61.700 - GEOTECHNICAL LEVEL 61.9m**
15. **ARCH RETAIL LEVEL 61.700 - GEOTECHNICAL LEVEL 61.7m**
16. REFER TO ELECTRICAL DRAWINGS FOR FIRE RATED PLYWOOD BASEMENT WALL LOCATIONS REQUIRED ON WALLS FOR EQUIPMENT INSTALLATION.



1. These architectural documents are the exclusive property of NEUF architect(e)s inc. and cannot be used, copied, or reproduced without written pre-authorization.
2. The contractor is responsible for checking and verifying all dimensions with respect to the project. Any discrepancy shall be reported to the architect.
3. The architect must be notified of all errors, omissions, and discrepancies between these documents and those of the other professionals.
4. Do not scale drawings. The dimensions on these documents must be read and not measured.
5. These drawings are to be read in conjunction with all material relevant to the project.


JAIN
7405 East Danbro Crescent, 2nd Floor Mississauga, Ontario, L5N 6P8
T 905 285 9900 jainconsultants.com

18-77 Auriga Drive, Ottawa ON K2E 7Z3
T 613 226 4558 goodevestructural.ca

3332, Carling Avenue, Ottawa, ON, K2H 5A8
T 613 722 5168 jbla.ca

Novatech Eng. Consultants Ltd.
240, Michael Cowpland Drive, Suite 200, Ottawa ON K2M 1P6
T 613 234 9643 novatech-eng.com

10 Rideau Street, 4th floor, Ottawa ON K1N 6M5
T 514 847 1117 NEUFarchitectes.com

CLARIDGE
HOMES

141 GEORGE STREET

12810

NO	REVISION	DATE (yyyy.mm.dd)
SS	FOR COORDINATION	2024.04.04
TT	FOR COORDINATION	2024.04.04
WW	FOR COORDINATION	2024.05.05
XX	FOR COORDINATION	2024.05.05
YY	FOR COORDINATION	2024.05.05
ZZ	RE-ISSUED FOR SITE PLAN APPROVAL	2024.05.11
AAA	FOR COORDINATION	2024.05.25
CCC	FOR TENDER	2024.05.25
DDD	FOR SHORING COORDINATION	2024.06.06
FFF	FOR REVISED FOUNDATION PERMIT	2024.07.07
III	SITE PLAN REVISION RESPONSE	2024.08.28
LLL	FOR COORDINATION	2024.10.24
MMM	SITE PLAN REVISION	2024.11.01

Drawing Title

As indicated

PARKING LEVEL 1 FLOOR PLAN (YORK)

Dwg Numb

A200E