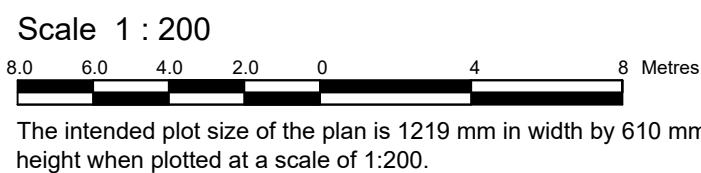


PART	ARCHITECTURAL FLOOR												GEOGRAPHICAL LOCATION											
	BELOW FOUNDATION AT ELEVATION 47.85												Registered Plan 424482											
	PARKING LEVEL 2 AT ELEVATION 50.10												North George Street Lots											
	PARKING LEVEL 1 AT ELEVATION 50.05																							
	GROUND FLOOR AT ELEVATION 62.05												South York Street Lots											
2ND FLOOR AT ELEVATION 66.55																								
SCHEDULE OF PARTS																								
LOCATED ON SHEET																								
2	2	3	3	3	3	3	3	3	3	3	3	3	3	3	3	3	3	3	3	3	3	3	3	
DIAGRAM TO SHOW PLAN VIEW OF PARTS												SECTION TO SHOW VERTICAL EXTENT OF PARTS												
A	B	C	D	E	F	I	2	3	4	5	6	7	8	PART OF LOT 1B										
														ALL OF LOT 19										
														ALL OF LOT 20										
														PART OF LOT 1B										
														ALL OF LOT 19										
														ALL OF LOT 20										
1																							1	
2																							2	
3																							3	
4																							4	
5																							5	
6																							6	
7																							7	
8																							8	
9																							9	
10																							10	
11																							11	
12																							12	
13																							13	
14																							14	
15																							15	
16																							16	
17																							17	
																							PART OF LOT 1B (South York Street), REGISTERED PLAN 41797	

SCHEDULE			
PART	LOT	REGISTERED PLAN	PIN
1	Part of 18 (South York Street)		Part of PIN 04214-0207
2	Part of 19 (South York Street)		Part of PIN 04214-0208
3			
4			
5	Part of 20 (South York Street)		Part of PIN 04214-0120
6	Part of 19 (South York Street)		Part of PIN 04214-0208
7	Part of 18, 19 (North George Street)		Part of PIN 04214-0208
8	Part of 20 (South York Street)		Part of PIN 04214-0120
9	Part of 20 (North George Street)	42482	Part of PIN 04214-0121
10	Part of 18, 19 (South York Street)		Part of PIN 04214-0207
11	Part of 19 (South York Street)		Part of PIN 04214-0208
12	Part of 20 (South York Street)		Part of PIN 04214-0120
13	Part of 19 (South York Street)		Part of PIN 04214-0208
14	Part of 19 (North George Street)		Part of PIN 04214-0121
15	Part of 20 (North George Street)		Part of PIN 04214-0121
16	Part of 20 (South York Street)		Part of PIN 04214-0120
17	Part of 18 (South York Street)	4797	Part of PIN 04214-0116

Part 17 : Subject to easement Inst. OC1803228

STRATA PLAN OF SURVEY OF  
PART OF LOT 18 AND  
ALL OF LOTS 19 AND 20  
(South York Street)  
AND  
PART OF LOT 18 AND  
ALL OF LOTS 19 AND 20  
(North George Street)  
REGISTERED PLAN 42482  
CITY OF OTTAWA  
Surveyed by Annis, O'Sullivan, Vollebekk Ltd.



**Metric**

**DISTANCES AND COORDINATES SHOWN ON THIS PLAN ARE IN METRES AND CAN BE CONVERTED TO FEET BY DIVIDING BY 0.3048.**

## Surveyor's Certificate

I CERTIFY THAT :

1. This survey and plan comprising sheets 1 to 5 are correct and in accordance with the Surveys Act, the Surveyors Act and the Land Titles Act and the regulations made under them.
2. The survey was completed on the 10th day of June, 2024.

MMM DD YYYY  
Date

Andrew J. Broxham  
Ontario Land Surveyor

This plan of survey relates to AOLS Plan Submission Form Number V

All set monumentation are CP's unless otherwise noted

Survey monuments set or witnessed where site conditions permitted

Distances shown on this plan are ground distances and can be converted to grid distances by multiplying by the combined scale factor of 0.99994.

Bearings are grid, derived from the southerly limit of York Street shown to be N58°17'25"E on Plan 4R-27331, and are referred to the Central Meridian MTM Zone 9 ( 76°30' West Longitude ) NAD-83 (original).

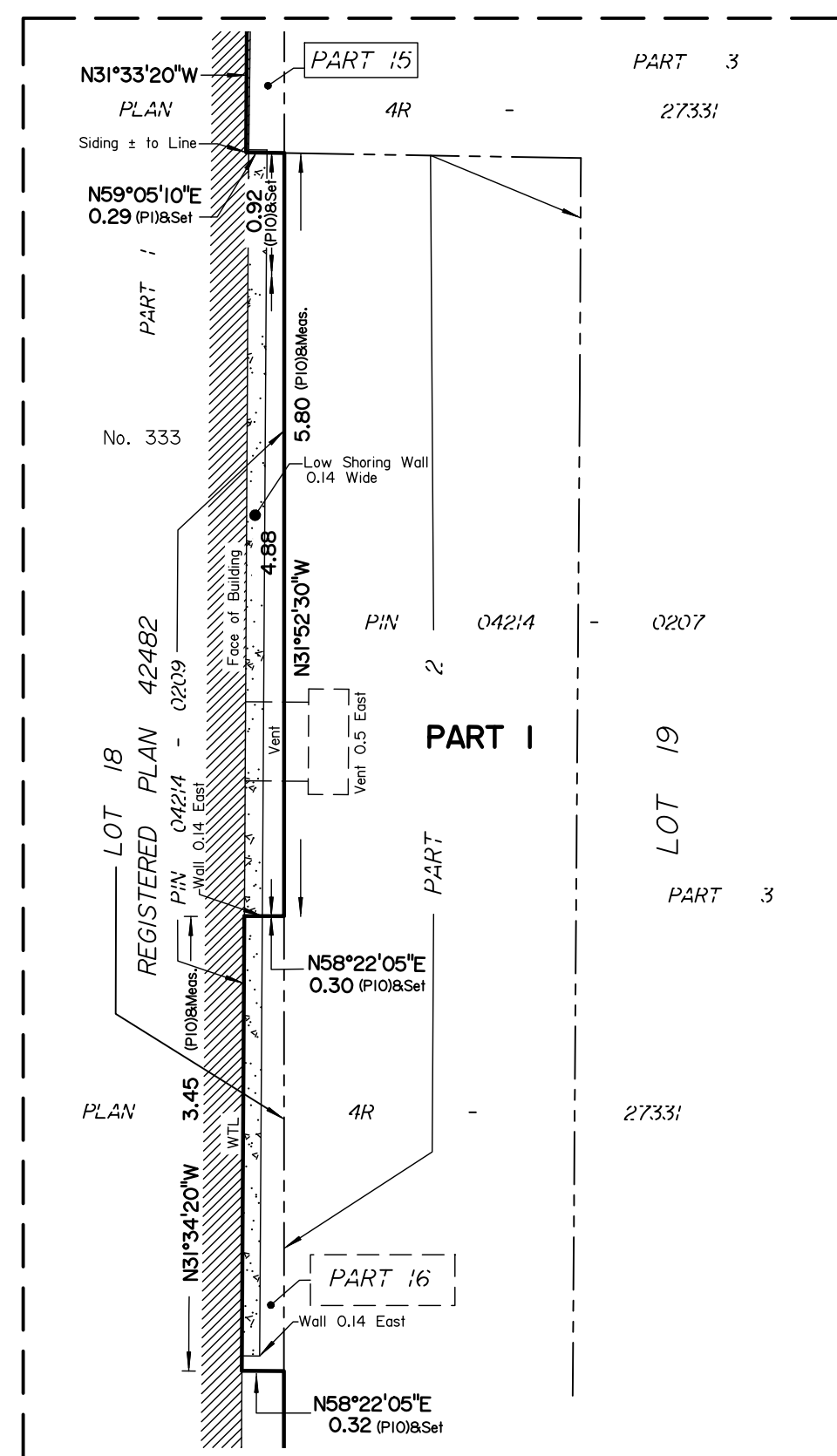
Coordinates are derived from Can-Net 2016 Real Time Network GPS observations referenced to Specified Control Points 01919680005 and 01919680105, MTM Zone 9 (76°30' West Longitude) NAD-83 (original).

Coordinate values are to urban accuracy in accordance with O. Reg. 216/10				
. 01919680005	Northing	5027191.26	Eastings	361496.76
. 01919680105	Northing	5024915.16	Eastings	373971.65
. Point A	Northing	5032338.31	Eastings	368178.94
. Point B	Northing	5032479.25	Eastings	368212.49

Caution: Coordinates cannot, in themselves, be used to re-establish corners or boundaries shown on this plan.

Elevations are geodetic and are derived from vertical control monument 00119544001, having a published value of 71.174 metres and are referred to the CGVD28 geodetic datum. Elevations can be converted to the CGVD2013 datum by subtracting 0.301 metres.

It is the responsibility of the user of this information to verify that the job benchmark has not been altered or disturbed and that it's relative elevation and description agrees with the information shown on this drawing.





**ANNIS, O'SULLIVAN, VOLLEBEKK LTD.**  
14 Concourse Gate, Suite 500  
Nepean, Ont. K2E 7S6  
Phone: (613) 727-0850 / Fax: (613) 727-1079  
Email: Nepean@aojvtd.com

**Ontario**  
**Land Surveyors**

Job No. 24071-23 Clonide L1d18-20 PL42482 R 08



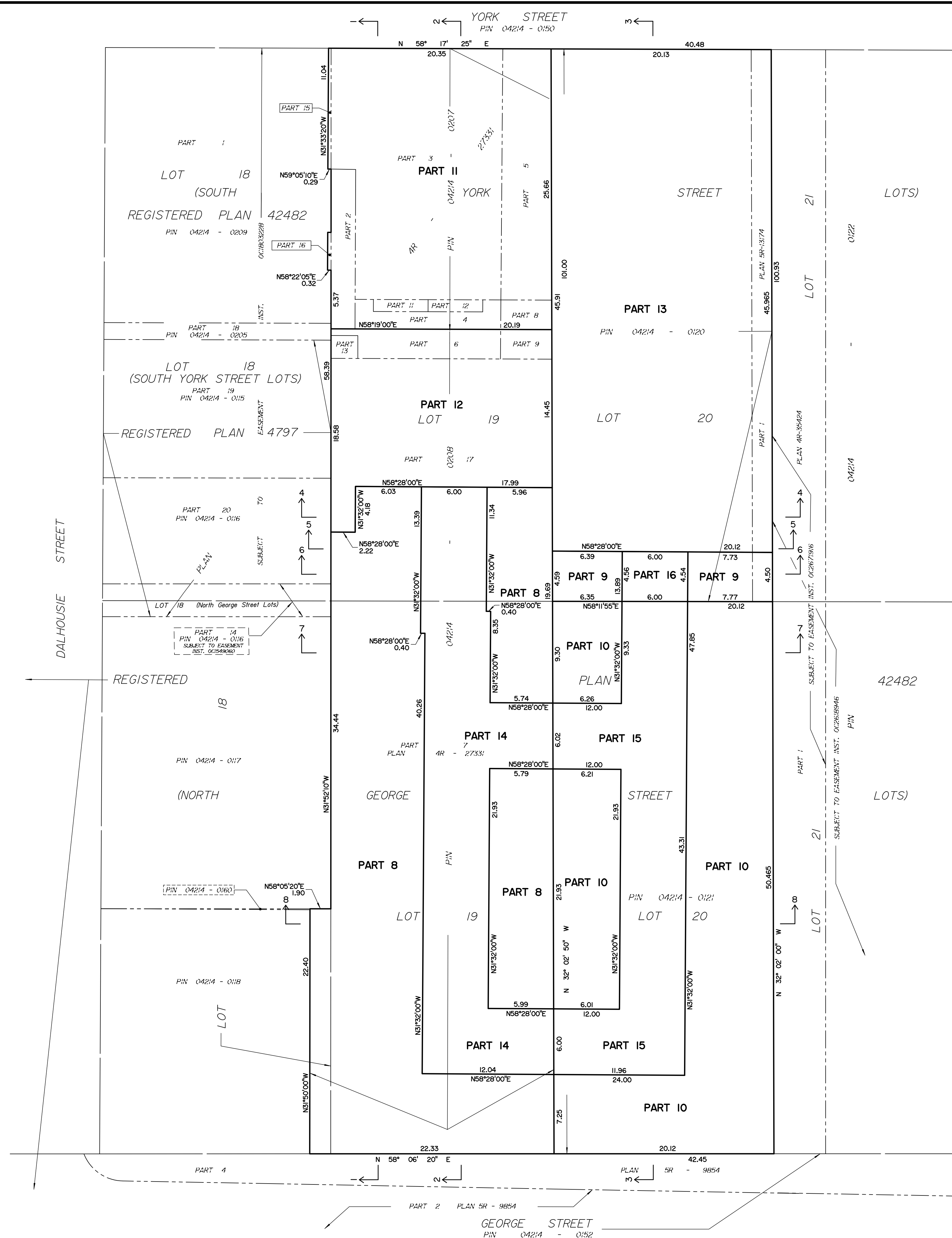


DIAGRAM C - TO ILLUSTRATE CONFIGURATION OF PARTS AT PARKING LEVEL P2 (Elevation 55.20)

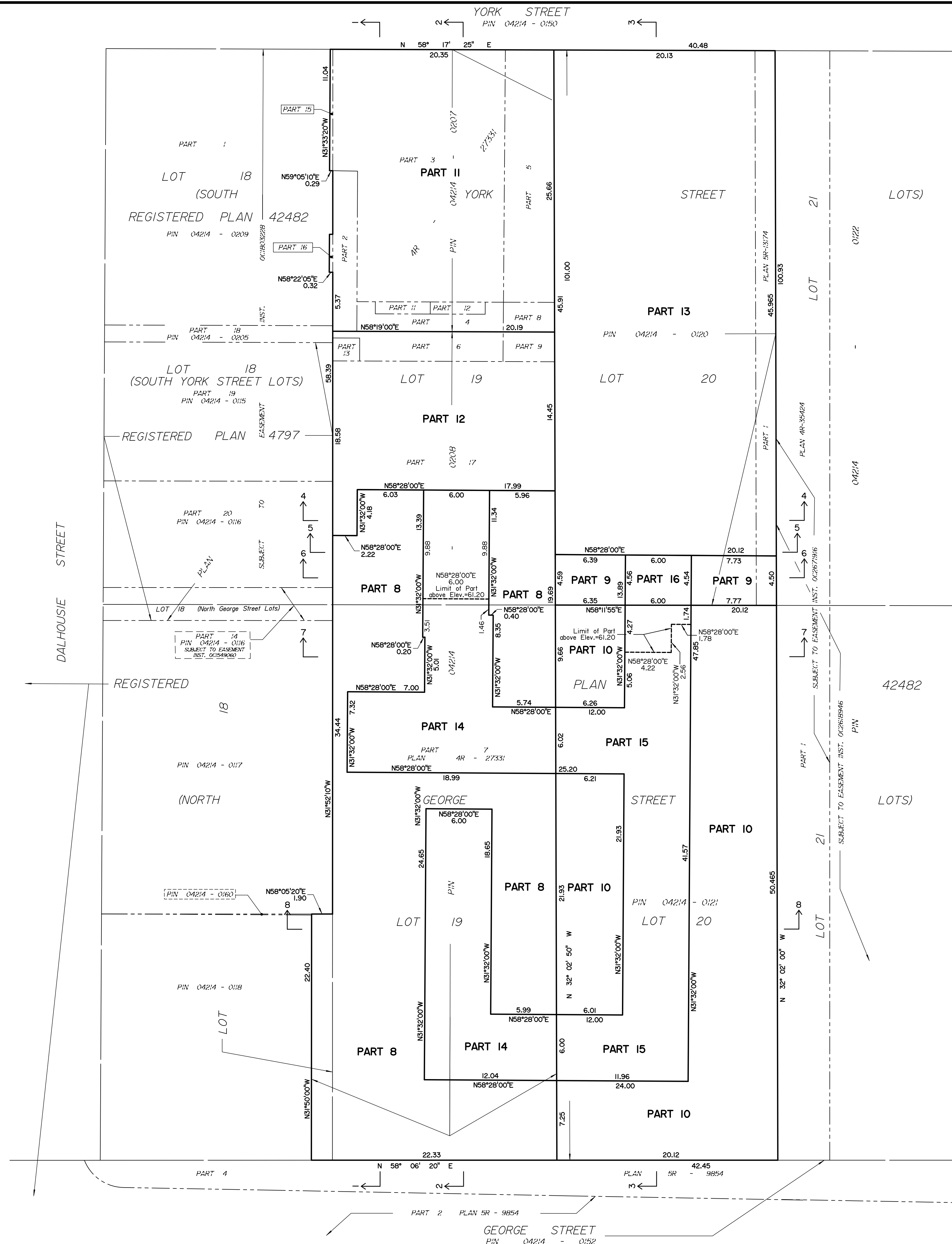
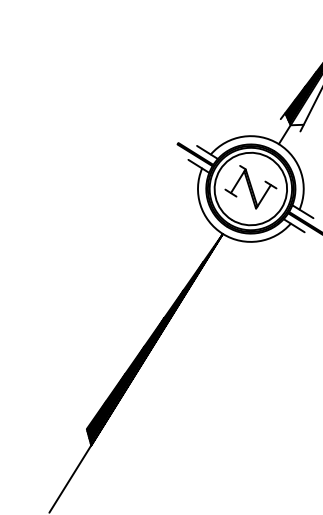


DIAGRAM D - TO ILLUSTRATE CONFIGURATION OF PARTS AT PARKING LEVEL P1 (Elevation 58.05)



Surveyed by Annis, O'Sullivan, Vollebakk Ltd.

Scale 1 : 200

The intended plot size of the plan is 1219 mm in width by 610 mm in height when plotted at a scale of 1:200.

Metric  
DISTANCES AND COORDINATES SHOWN ON THIS PLAN  
ARE IN METRES AND CAN BE CONVERTED TO FEET BY  
DIVIDING BY 0.3048.

## Notes &amp; Legend

Symbol	Denotes
—○—	Survey Monument Planted
—■—	Survey Monument Found
IB	Iron Bar
SIB	Standard Iron Bar
SSIB	Short Standard Iron Bar
CC	Cut Cross
CP	Concrete Pin
(WIT)	Witness
Mes.	Measured
(AOG)	Annis, O'Sullivan, Vollebakk Ltd.
(P1)	Registered Plan 42482
(P2)	Plan 4R-27331
(P3)	Plan 5R-13174
(P4)	Plan 5R-11443
(P5)	Plan 5R-9854
(P6)	(STANTEC) Plan dated June 22, 2012
(P7)	(AOG) Plan dated November 20, 2017
(P8)	(AOG) Plan dated August 25, 2020
	Ref File No. 20814-20
(P9)	(AOG) Plan dated September 26, 1988
(P10)	(AOG) Plan dated March 27, 2023
RW	Retaining Wall
○ UP	Utility Pole
Acc.	Accepted
Elev.	Elevation
H	Horizontal Plane
V	Vertical Plane
I	Inclined Plane

See Diagram A

See Section 1

Upward without limit

Downward without limit

All set monumentation are CP's unless otherwise noted.

Survey monuments set or witnessed where site conditions permitted.

Distances shown on this plan are ground distances and can be converted to grid distances by multiplying by the combined scale factor of 0.99994.

Bearings are grid, derived from the southerly limit of York Street shown to be N58°17'25"E on Plan 4R-27331, and are referred to the Central Meridian MTM Zone 9 (76°30' West Longitude ) NAD-83 (original).

Coordinates are derived from Can-Net 2016 Real Time Network GPS observations referenced to Specified Control Points 01919680005 and 01919680105, MTM Zone 9 (76°30' West Longitude ) NAD-83 (original).

Coordinate values are to urban accuracy in accordance with O. Reg. 216/10.

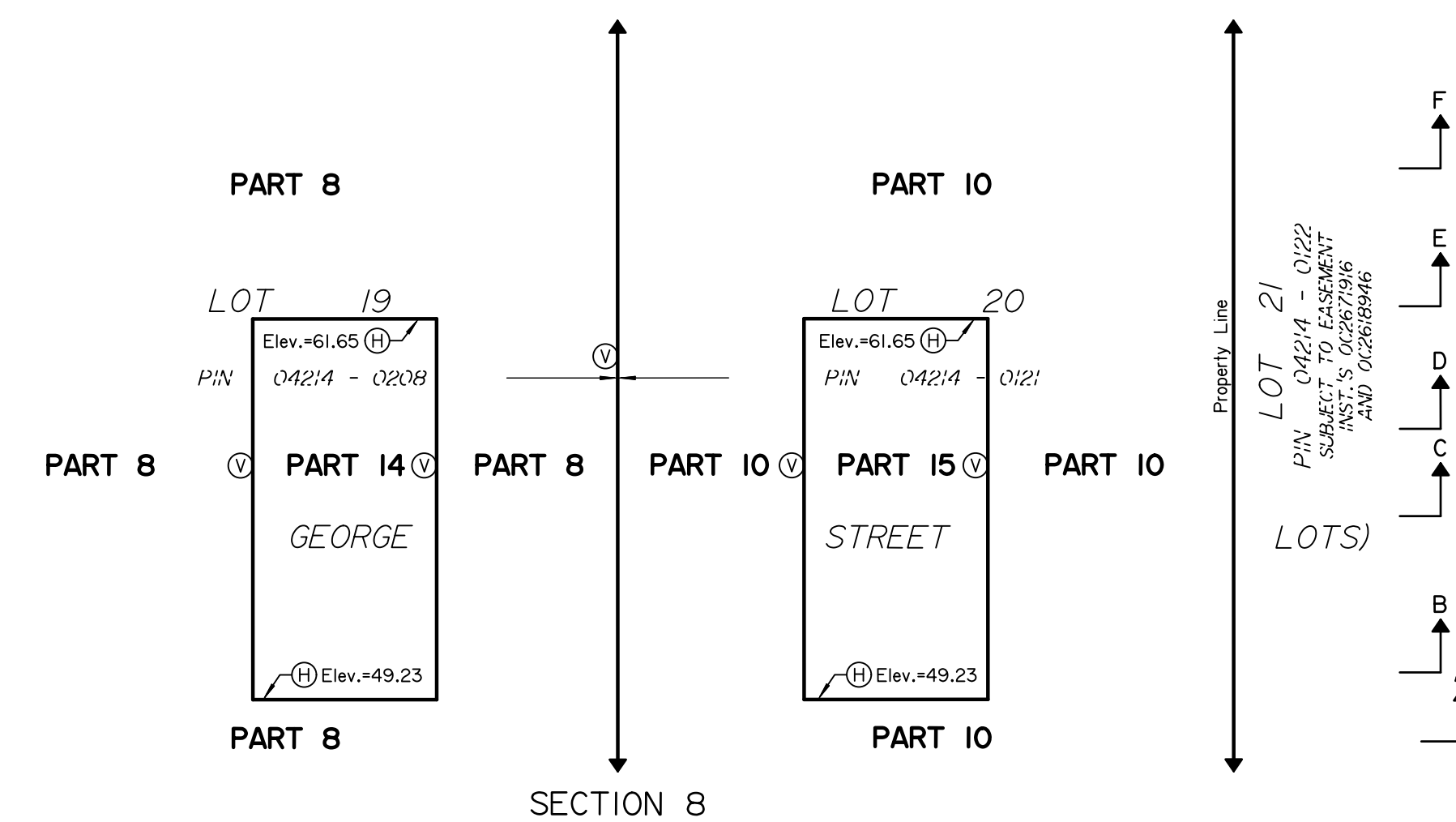
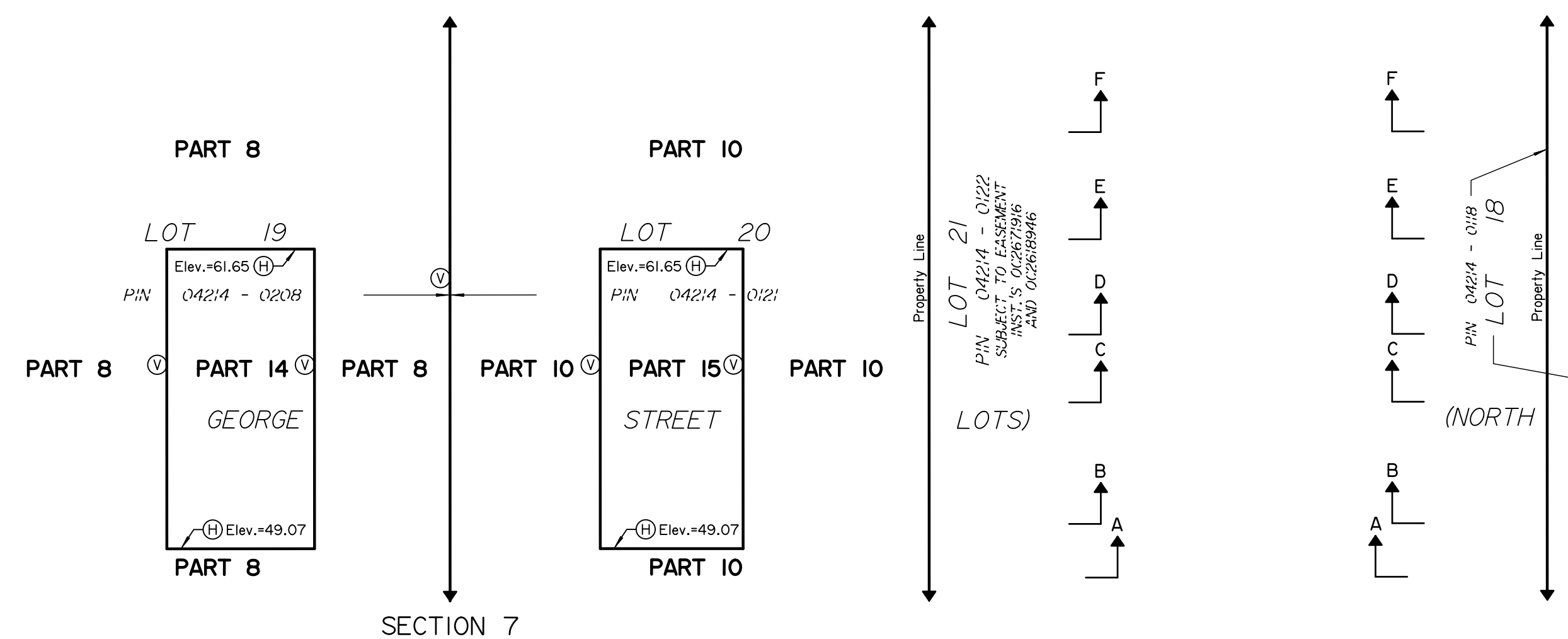
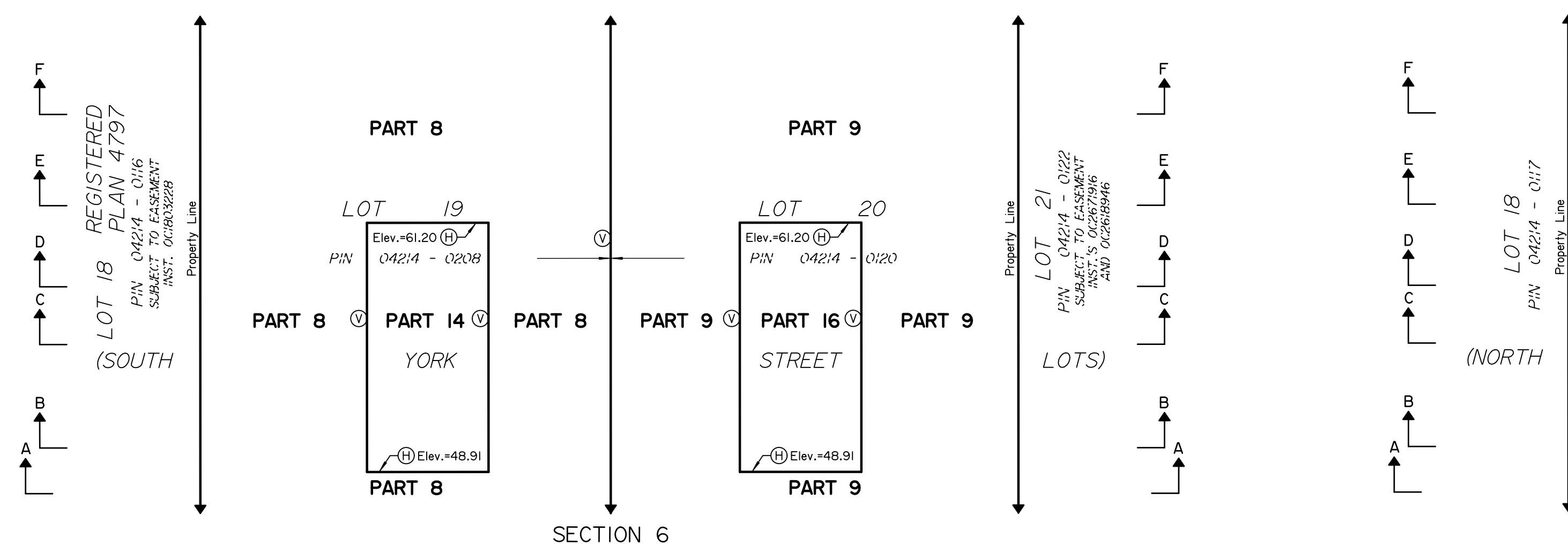
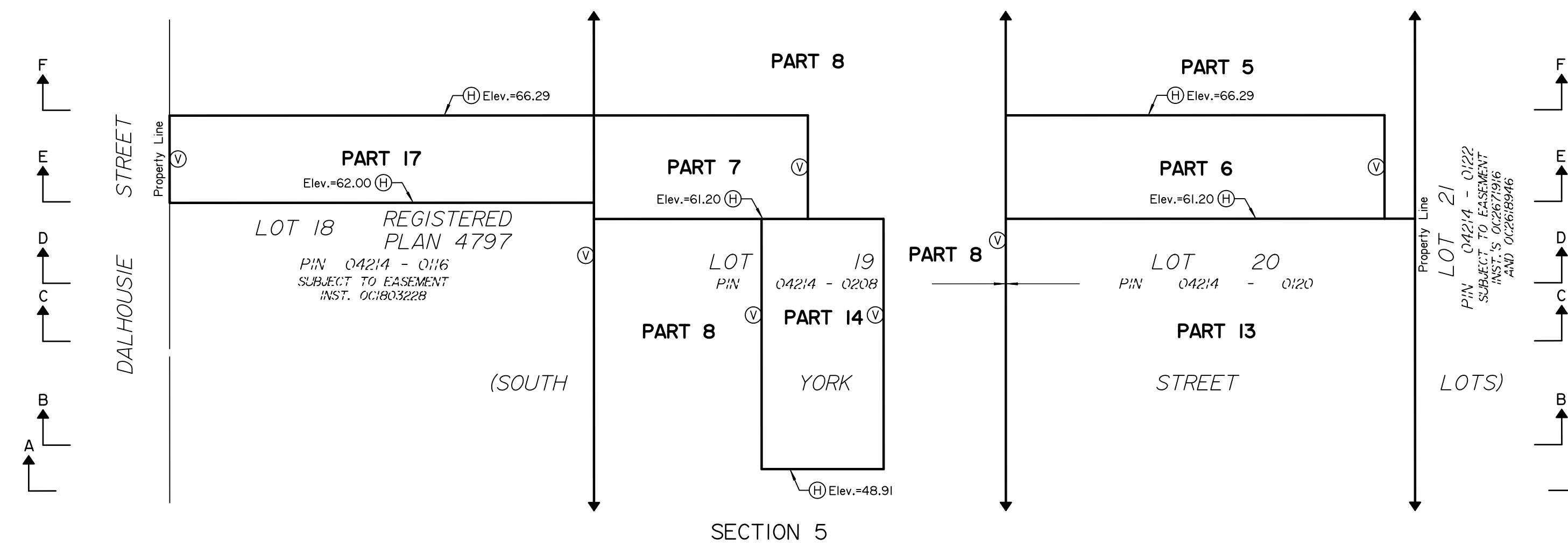
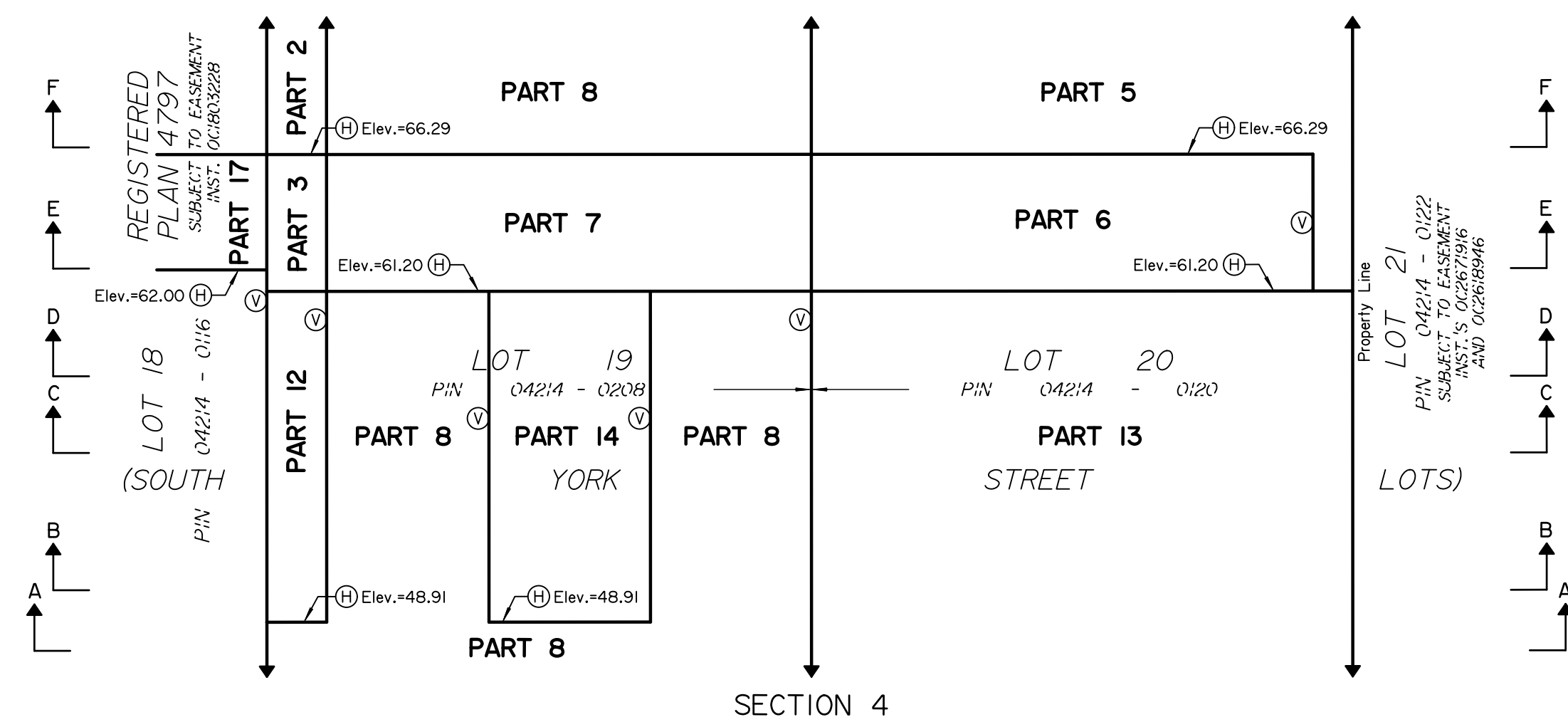
.01919680005	Northing	5027191.26	Easting	361496.76
.01919680105	Northing	5024915.16	Easting	373971.65
- Point A	Northing	5032338.31	Easting	368178.94
- Point B	Northing	5032479.25	Easting	368212.49

Caution: Coordinates cannot, in themselves, be used to re-establish corners or boundaries shown on this plan.

Elevations are geodetic and are derived from vertical control monument 00119544001, having a published value of 71.174 metres and are referred to the CGVD28 geodetic datum. Elevations can be converted to the CGVD2013 datum by subtracting 0.301 metres.

It is the responsibility of the user of this information to verify that the job benchmark has not been altered or disturbed and that it's relative elevation and description agrees with the information shown on this drawing.





Surveyed by Annis, O'Sullivan, Vollebakk Ltd.

Scale 1 : 200  
The intended plot size of the plan is 1219 mm in width by 610 mm in height when plotted at a scale of 1:200.

Metric  
DISTANCES AND COORDINATES SHOWN ON THIS PLAN ARE IN METRES AND CAN BE CONVERTED TO FEET BY DIVIDING BY 0.3048.

#### Notes & Legend

Symbol	Denotes	Survey Monument Planted
—□—	-	Survey Monument Found
IB	-	Iron Bar
SIB	-	Standard Iron Bar
SSIB	-	Short Standard Iron Bar
CC	-	Cut Cross
CP	-	Concrete Pin
(WIT)	-	Witness
Mess.	-	Measured
(AOG)	-	Annis, O'Sullivan, Vollebakk Ltd.
(P)	-	Registered Plan 42482
(P1)	-	Plan 4R-27331
(P2)	-	Plan 5R-13174
(P3)	-	Plan 5R-11443
(P4)	-	Plan 5R-9854
(P5)	-	(STANTEC) Plan dated June 22, 2012
(P6)	-	(STANTEC) Plan dated March 10, 2015
(P7)	-	(AOG) Plan dated November 20, 2017
(P8)	-	(AOG) Plan dated August 25, 2020
(P9)	-	Ref File No. 20814-20
(P10)	-	(AOG) Plan dated September 26, 1988
RW	-	Retaining Wall
o LP	-	Utility Pole
Acc.	-	Accepted
Elev.	-	Elevation
(H)	-	Horizontal Plane
(V)	-	Vertical Plane
(I)	-	Inclined Plane

See Diagram A  
See Section 1  
Upward without limit  
Downward without limit

All set monumentation are CP's unless otherwise noted.

Survey monuments set or witnessed where site conditions permitted.

Distances shown on this plan are ground distances and can be converted to grid distances by multiplying by the combined scale factor of 0.99994.

Bearings are grid, derived from the southerly limit of York Street shown to be N85°17'25"E on Plan 4R-27331, and are referred to the Central Meridian MTM Zone 9 (76°30' West Longitude) NAD-83 (original).

Coordinates are derived from Can-Net 2016 Real Time Network GPS observations referenced to Specified Control Points 01919680005 and 01919680105, MTM Zone 9 (76°30' West Longitude) NAD-83 (original).

Coordinate values are to urban accuracy in accordance with O. Reg. 216/10.

Caution: Coordinates cannot, in themselves, be used to re-establish corners or boundaries shown on this plan.

Elevations are geodetic and are derived from vertical control monument 00119544001, having a published value of 71.174 metres and are referred to the CGVD28 geodetic datum. Elevations can be converted to the CGVD2013 datum by subtracting 0.301 metres.

It is the responsibility of the user of this information to verify that the job description agrees with the information shown on this drawing.