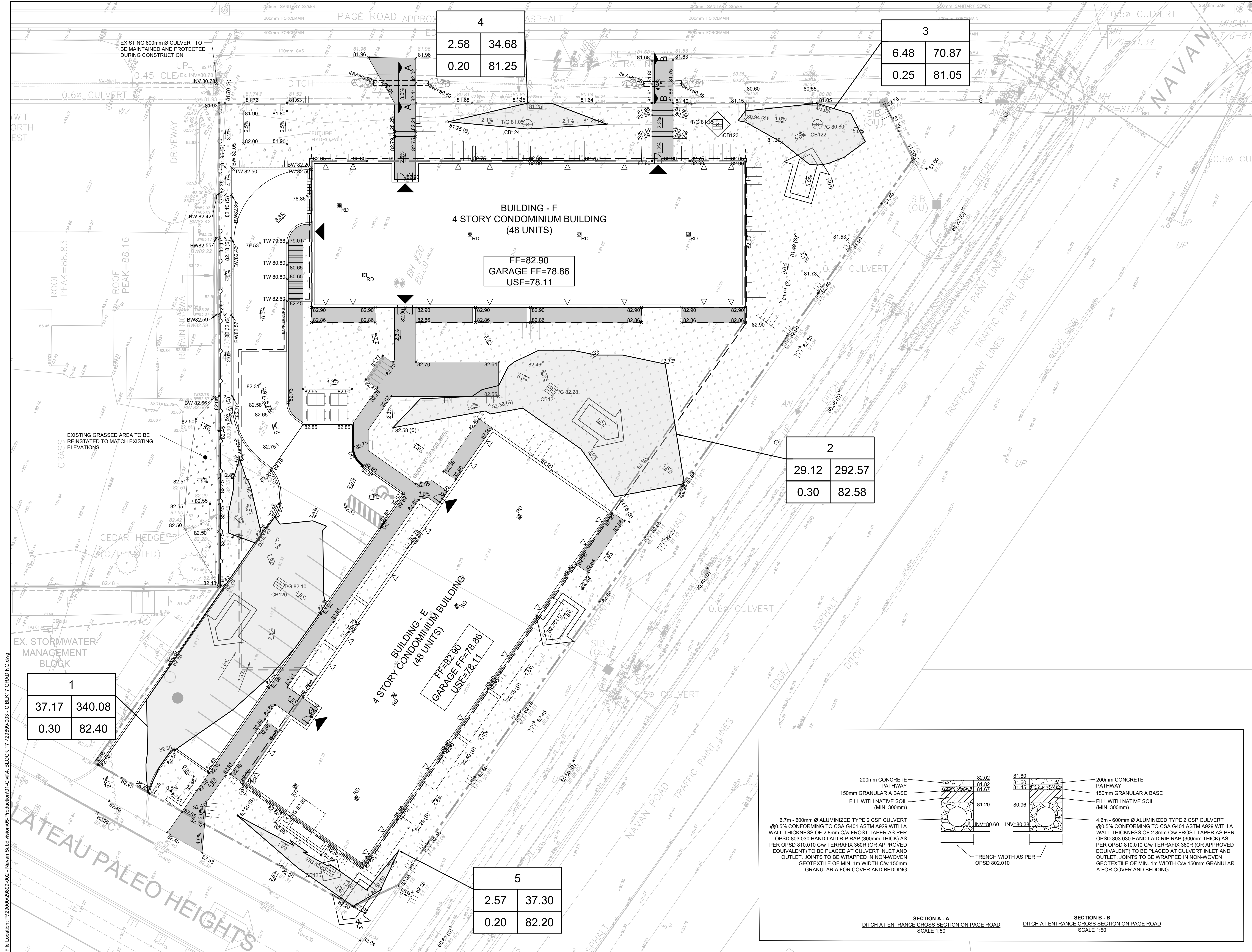


File Location: P:\2000\28899-002 - Navan Subdivision\05-Production\01-Civil\4 BLOCK 17 - 28899-003 - C.B.K17 GRADING.dwg



KEY PLAN
N.T.S.

LEGEND

- SITE BOUNDARY
- UNDERGROUND GARAGE LIMITS
- PROPOSED ELEVATION
- PROPOSED SUBDIVISION ELEVATION
- PROPOSED HIGH POINT
- ORIGINAL SURVEY
- PROPOSED TERRACING (MAX 3:1)
- SURFACE SLOPE
- MAJOR/EMERGENCY OVERLAND FLOW DIRECTION (+/- 1100 YR)
- DEPRESSED CURB
- FINISHED FLOOR ELEVATION
- GARAGE FF +82.40
- GARAGE FINISHED FLOOR ELEVATION
- UNDERSIDE OF FOOTING ELEVATION
- BUILDING ENTRANCE
- SLIDING DOOR AT BALCONY
- BOREHOLE NUMBER
- GROUND SURFACE ELEVATION (m)
- GROUND WATER ELEVATION (m)
- MAXIMUM WATER LEVEL (STATIC)
- MAX. PONDING VOLUME (m³)
- AREA ID
- MAX. PONDING AREA (m²)
- MAX. WATER LEVEL (STATIC)
- PONDING DEPTH (STATIC)
- AT SURFACE BALCONY
- CANTILEVERED BALCONY
- CONCRETE BARRIER CURB
- CONCRETE SIDEWALK
- GRASSED AREA

No.	ISSUE / REVISION	DDMMYY
2	ISSUED FOR SECOND ENGINEERING SUBMISSION	13/03/25
1	ISSUED FOR FIRST ENGINEERING SUBMISSION	26/09/24

THESE DRAWINGS HAVE BEEN PRODUCED BY J.L. RICHARDS & ASSOCIATES LIMITED AND ARE SUBJECT TO COPYRIGHT AND USE RESTRICTIONS SET OUT IN THE APPLICABLE PROJECT CONTRACT. ANY USE, REUSE, OR MODIFICATION OF THESE DRAWINGS FOR PURPOSES OTHER THAN THE ORIGINAL PROJECT OR EXECUTION OF THE DESCRIBED WORK IS NOT PERMITTED OR ENDORSED WITHOUT THE PRIOR WRITTEN AUTHORIZATION OF J.L.R. J.L.R. MAKES NO WARRANTIES, EITHER EXPRESS OR IMPLIED, OF THE SUITABILITY OR FITNESS OF THESE DRAWINGS FOR ANY OTHER PURPOSE, AND ANY PARTY WHICH CHOOSES TO USE, MODIFY, OR OTHERWISE RELY ON THESE DRAWINGS WITHOUT J.L.R.'S AUTHORIZATION ACCEPTS THESE LIMITATIONS AND DOES SO AT THEIR SOLE RISK AND WITHOUT LIABILITY TO J.L.R.

VERIFY SHEET SIZE AND SCALES. THE BAR TO THE RIGHT IS 25mm IF THIS IS A FULL SIZE DRAWING.

SCALE: 1:200

CLIENT:

Heafey
GROUP

CONSULTANT:

J.L. Richards
ENGINEERS - ARCHITECTS - PLANNERS

CONSULTANT:

PROFESSIONAL STAMP

K.R. FERREY MORENO
100122432
2025-03-14
PROVINCE OF ONTARIO

PROJECT NORTH

PROJECT:

NAVAN RESIDENTIAL AND COMMERCIAL BLOCK 17

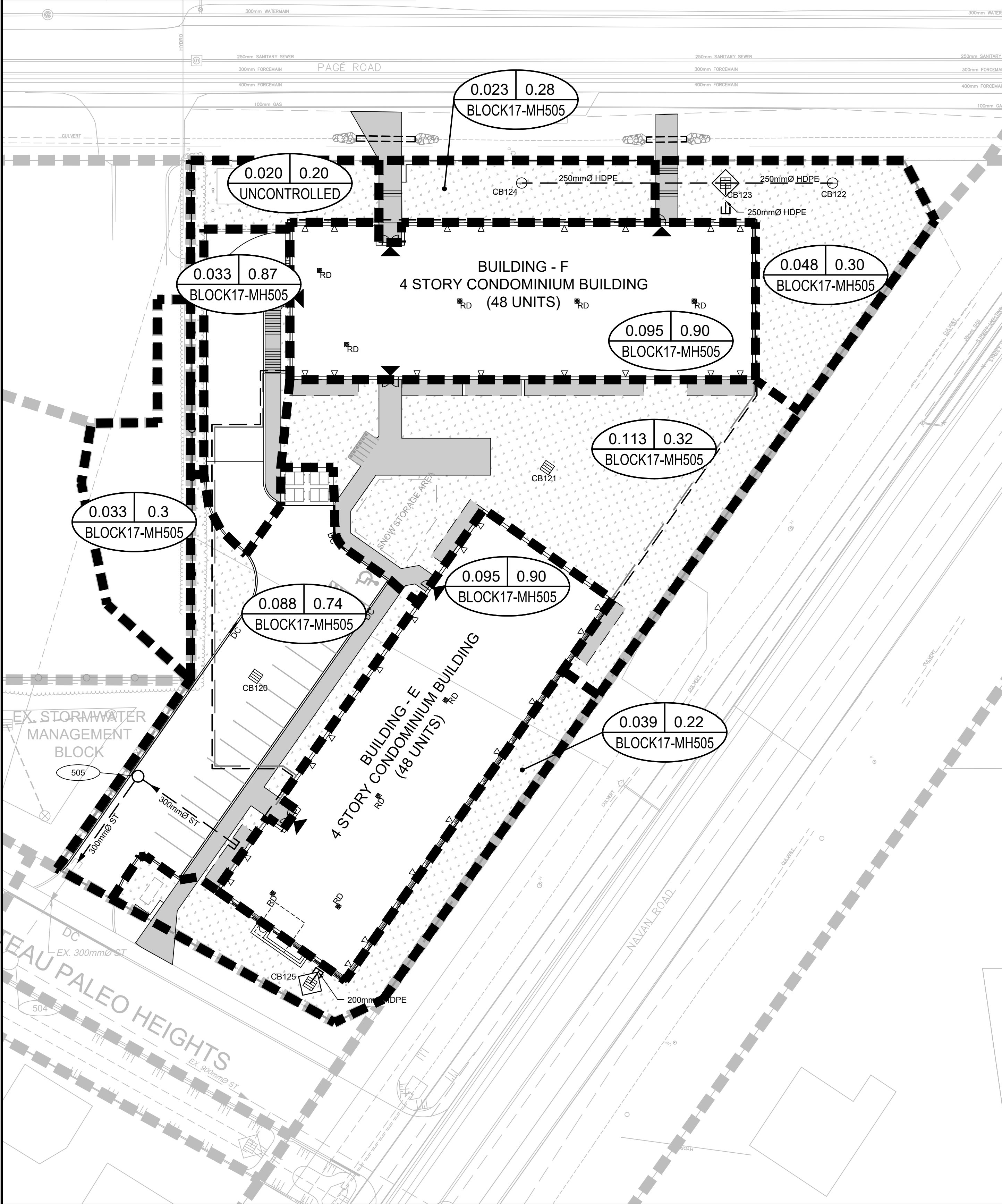
2983 NAVAN ROAD OTTAWA, ONTARIO

DRAWING:

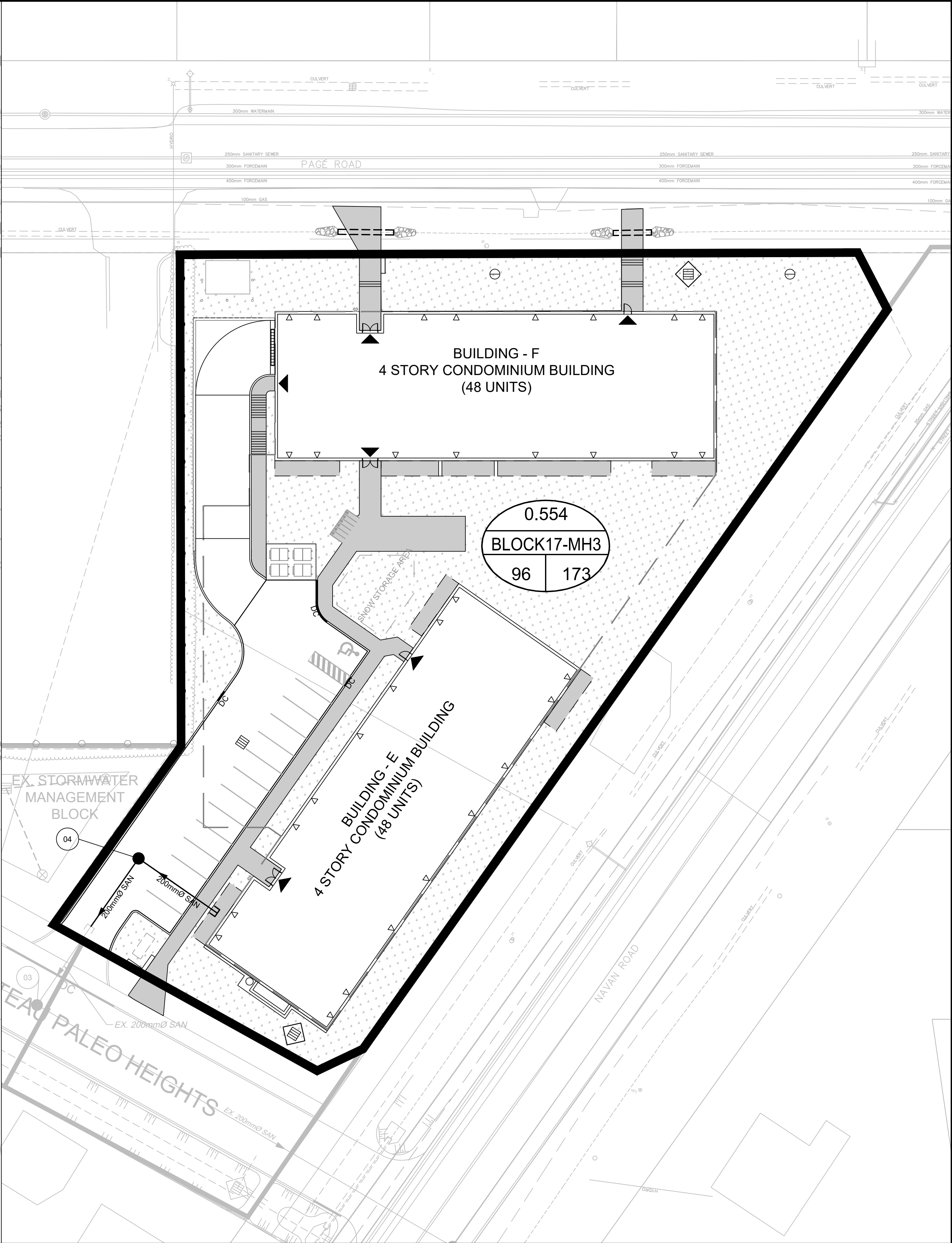
GRADING AND PONDING PLAN

DESIGN:	KF/FA	DRAWING #:	C02
DRAWN:	FA		
CHECKED:	KF		
JLR #:	29899-003		

	1:100 Year Storage Volume (m³)	Roof Drain Release Rate (L/s)
Building E	49	2
Building F	49	2



STORM DRAINAGE



SANITARY DRAINAGE

KEY PLAN
N.T.S.

LEGEND

SITE BOUNDARY

PROPOSED STORM DRAINAGE BOUNDARY

MAJOR OVERLAND FLOW DIRECTION

AREA IN HECTARES

RUNOFF COEFFICIENT

PIPE REACH UPSTREAM CATCHBASIN TO DOWNSTREAM CATCHBASIN

EXISTING CATCH BASIN

CATCH BASIN w/ ICD

ELBOW REAR YARD CATCH BASIN AND LEAD

PROPOSED STORM SEWER & MAINTENANCE HOLE

EXISTING STORM SEWER & MAINTENANCE HOLE

PROPOSED SANITARY DRAINAGE BOUNDARY

AREA IN HECTARES

PIPE REACH UPSTREAM MAINTENANCE HOLE TO DOWNSTREAM MAINTENANCE HOLE

POPULATION

NUMBER OF UNITS

PROPOSED SANITARY SEWER & MAINTENANCE HOLE

EXISTING SANITARY SEWER & MAINTENANCE HOLE

2	ISSUED FOR SECOND ENGINEERING SUBMISSION	13/03/25
1	ISSUED FOR FIRST ENGINEERING SUBMISSION	26/09/24

No.	ISSUE / REVISION	DD/MM/YY
2	ISSUED FOR SECOND ENGINEERING SUBMISSION	13/03/25
1	ISSUED FOR FIRST ENGINEERING SUBMISSION	26/09/24

THESE DRAWINGS HAVE BEEN PRODUCED BY J.L. RICHARDS & ASSOCIATES LIMITED AND ARE SUBJECT TO COPYRIGHT AND USE RESTRICTIONS SET OUT IN THE APPLICABLE PROJECT CONTRACT. ANY USE, REUSE, OR MODIFICATION OF THESE DRAWINGS FOR PURPOSES OTHER THAN THE ORIGINAL PROJECT OR EXECUTION OF THE DESCRIBED WORK IS NOT PERMITTED OR ENDORSED WITHOUT THE PRIOR WRITTEN AUTHORIZATION OF J.L.R. JLR MAKES NO WARRANTIES, EITHER EXPRESS OR IMPLIED, OF THE SUITABILITY OR FITNESS OF THESE DRAWINGS FOR ANY OTHER PURPOSE, AND ANY PARTY WHICH CHOOSES TO USE, MODIFY, OR OTHERWISE RELY ON THESE DRAWINGS WITHOUT JLR'S AUTHORIZATION ACCEPTS THESE LIMITATIONS AND DOES SO AT THEIR SOLE RISK AND WITHOUT LIABILITY TO JLR.

VERIFY SHEET SIZE AND SCALES. THE BAR TO THE RIGHT IS 25mm IF THIS IS A FULL SIZE DRAWING.

SCALE: 1:300

CLIENT:

Heafey GROUP

CONSULTANT:

J.L. Richards ENGINEERS - ARCHITECTS - PLANNERS

CONSULTANT:

PROFESSIONAL STAMP

PROJECT NORTH

PROJECT:

NAVAN RESIDENTIAL AND COMMERCIAL BLOCK 17

2983 NAVAN ROAD OTTAWA, ONTARIO

DRAWING:

STORM AND SANITARY DRAINAGE PLANS

DESIGN: KF/FA

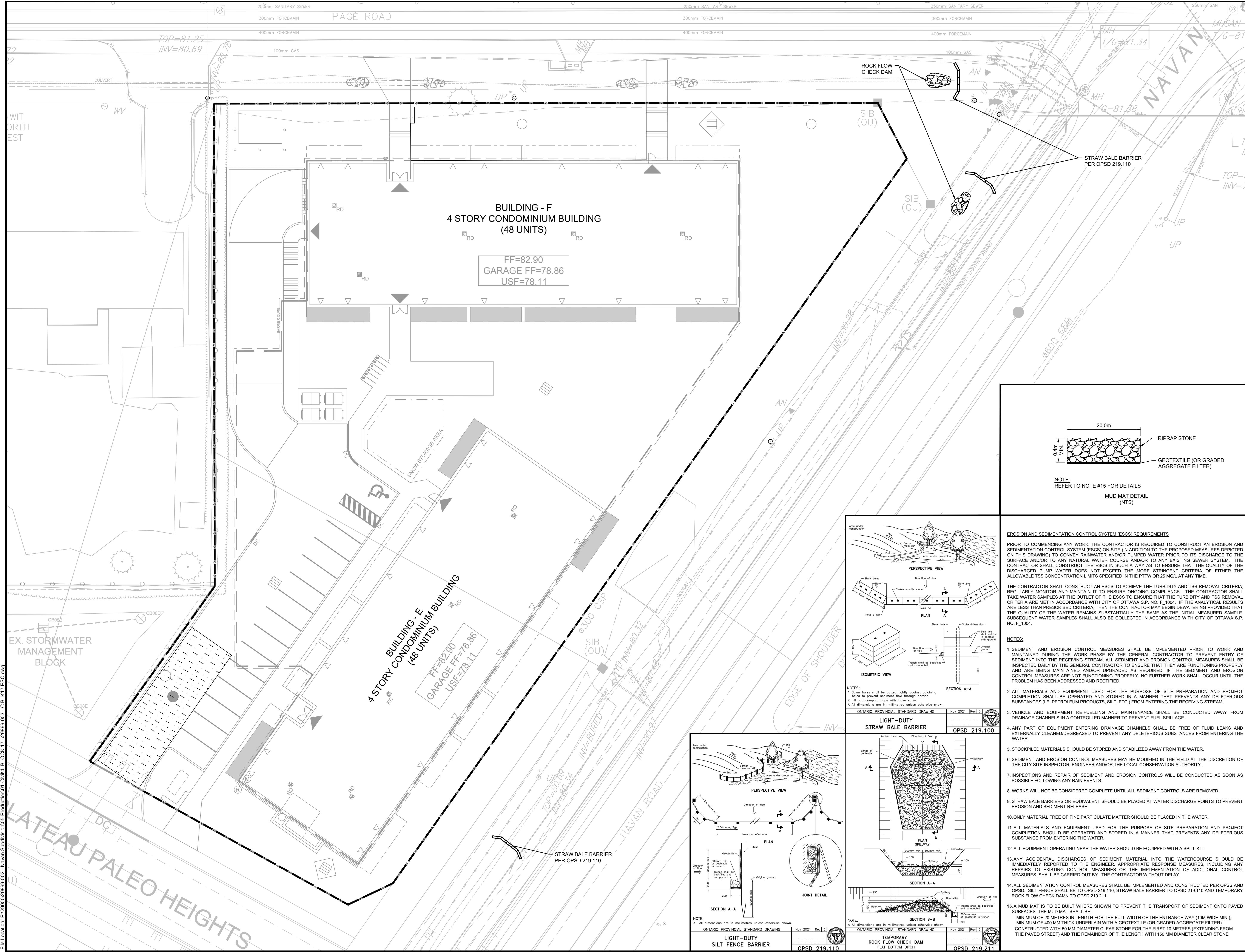
DRAWN: FA

CHECKED: KF

JLR #: 29899-003

DRAWING #:

C03



KEY PLAN
N.T.S

LEGEND

SITE BOUNDARY

EXISTING CATCH BASIN

CATCH BASIN c/w ICD

ELBOW REAR YARD CATCH BASIN AND LEAD

STORM MAINTENANCE HOLE

EXISTING STORM MAINTENANCE HOLE

SANITARY MAINTENANCE HOLE

EXISTING SANITARY MAINTENANCE HOLE

EXISTING FENCE

MUD MAT

PROPOSED STRAW BALE BARRIER

PROPOSED ROCK FLOW CHECK DAM

PROPOSED SILT FENCE

2

ISSUED FOR SECOND ENGINEERING SUBMISSION

13/03/25

1

ISSUED FOR FIRST ENGINEERING SUBMISSION

26/09/24

No.

ISSUE / REVISION

DD/MM/YY

THESE DRAWINGS HAVE BEEN PRODUCED BY J.L. RICHARDS & ASSOCIATES LIMITED AND ARE SUBJECT TO COPYRIGHT AND USE RESTRICTIONS SET OUT IN THE APPLICABLE PROJECT CONTRACT. ANY USE, REUSE, OR MODIFICATION OF THESE DRAWINGS FOR PURPOSES OTHER THAN THE ORIGINAL PROJECT OR EXECUTION OF THE DESCRIBED WORK IS NOT PERMITTED OR ENDORSED WITHOUT THE PRIOR WRITTEN AUTHORIZATION OF J.L.R. J.L.R. MAKES NO WARRANTIES, EITHER EXPRESS OR IMPLIED, OF THE SUITABILITY OR FITNESS OF THESE DRAWINGS FOR ANY OTHER PURPOSE, AND ANY PARTY WHICH CHOOSES TO USE, MODIFY, OR OTHERWISE RELY ON THESE DRAWINGS WITHOUT J.L.R.'S AUTHORIZATION ACCEPTS THESE LIMITATIONS AND DOES SO AT THEIR SOLE RISK AND WITHOUT LIABILITY TO J.L.R.

VERIFY SHEET SIZE AND SCALES. THE BAR TO THE RIGHT IS 25mm IF THIS IS A FULL SIZE DRAWING.

0

25mm

SCALE: 1:200

CLIENT:

Heafey GROUP

CONSULTANT:

www.jrichards.ca

J.L. Richards

ENGINEERS - ARCHITECTS - PLANNERS

CONSULTANT:

PROFESSIONAL STAMP

PROJECT NORTH

PROJECT:

NAVAN RESIDENTIAL AND COMMERCIAL BLOCK 17

2983 NAVAN ROAD OTTAWA, ONTARIO

DRAWING:

EROSION AND SEDIMENT CONTROL PLAN

DESIGN: KF/FA

DRAWN: FA

CHECKED: KF

JLR #: 29899-003

DRAWING #:

C04

File Location: P:\2000\29899-002 - Navan Subdivision\05-Production\01-Civil\4 - BLOCK 17 - 29899-003 - C.BLK17.ESC.dwg

Plot Date: March 13, 2025 7:54:53 AM
CITY FILE No. 007-16-21-0027