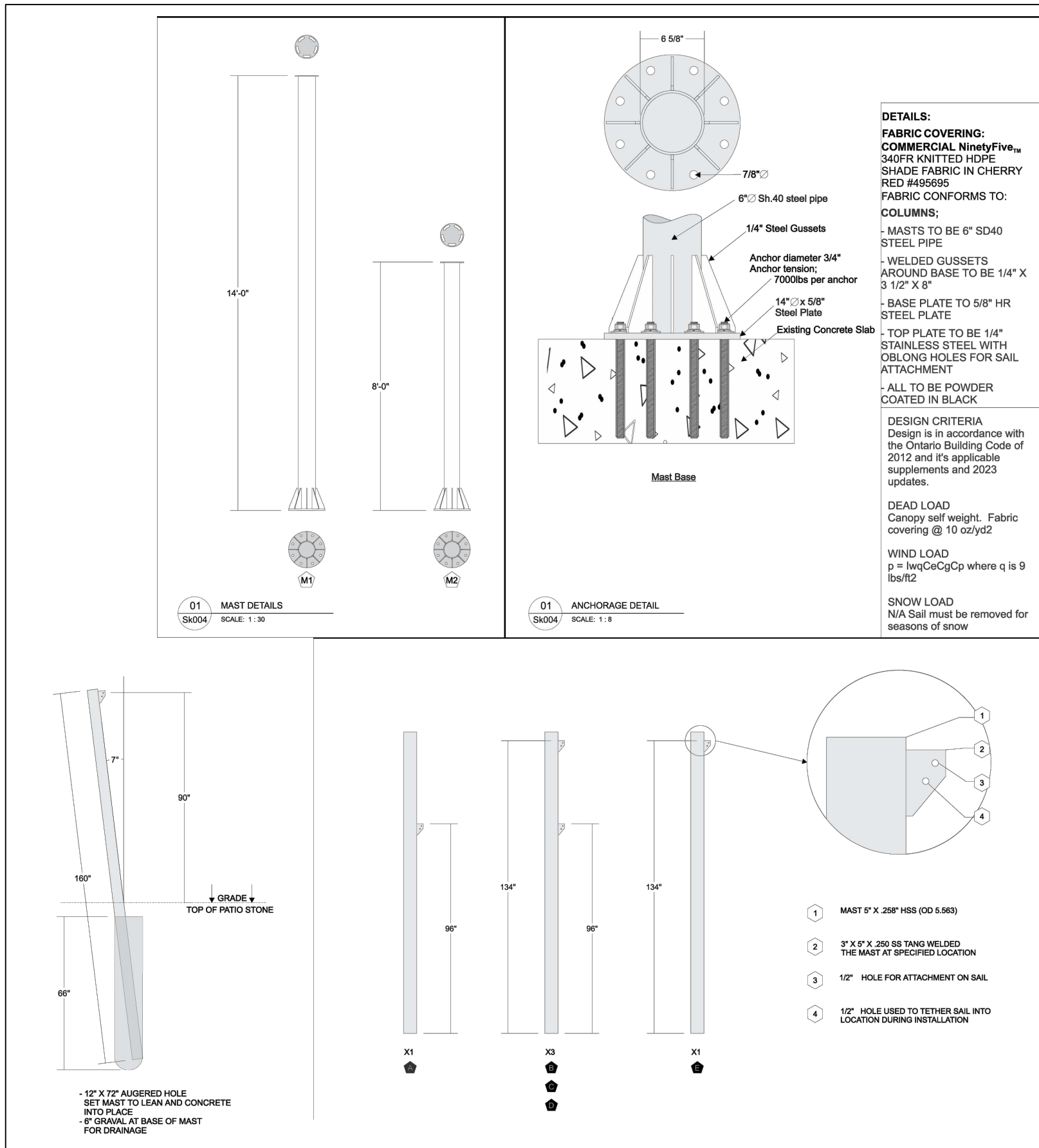




D1  
L5004  
TYPICAL TRIANGULAR SHADE SAIL  
IMAGE  
NOT TO SCALE



D2  
L5004  
TYPICAL RECTANGULAR SHADE SAIL  
IMAGE  
NOT TO SCALE



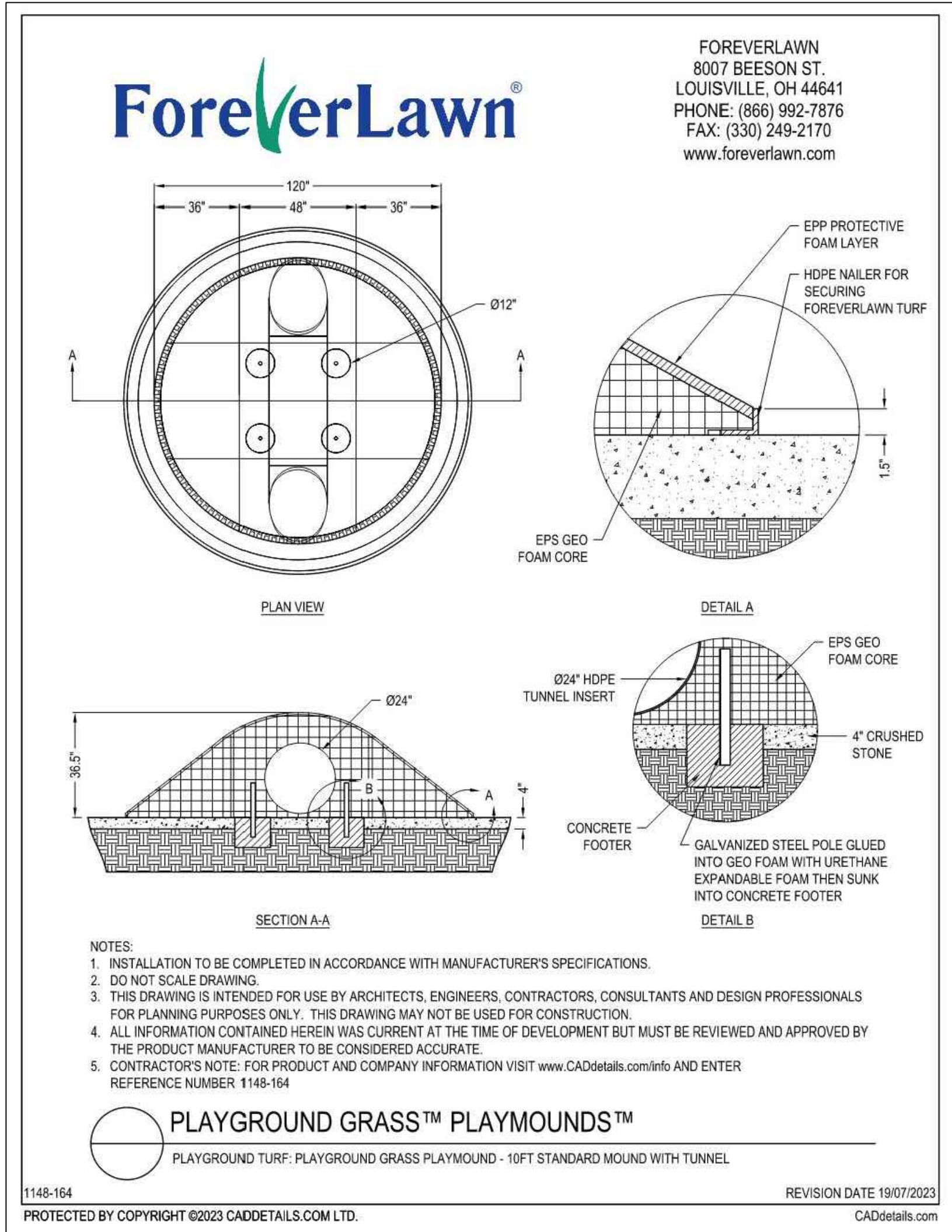
D3  
L5004  
ATTACHMENT AND POST DETAILS FOR RECTANGULAR SAILS  
DETAIL  
NOT TO SCALE



D4  
L5004  
TYPICAL CANTILEVER SINGLE POST UMBRELLA  
IMAGE  
NOT TO SCALE



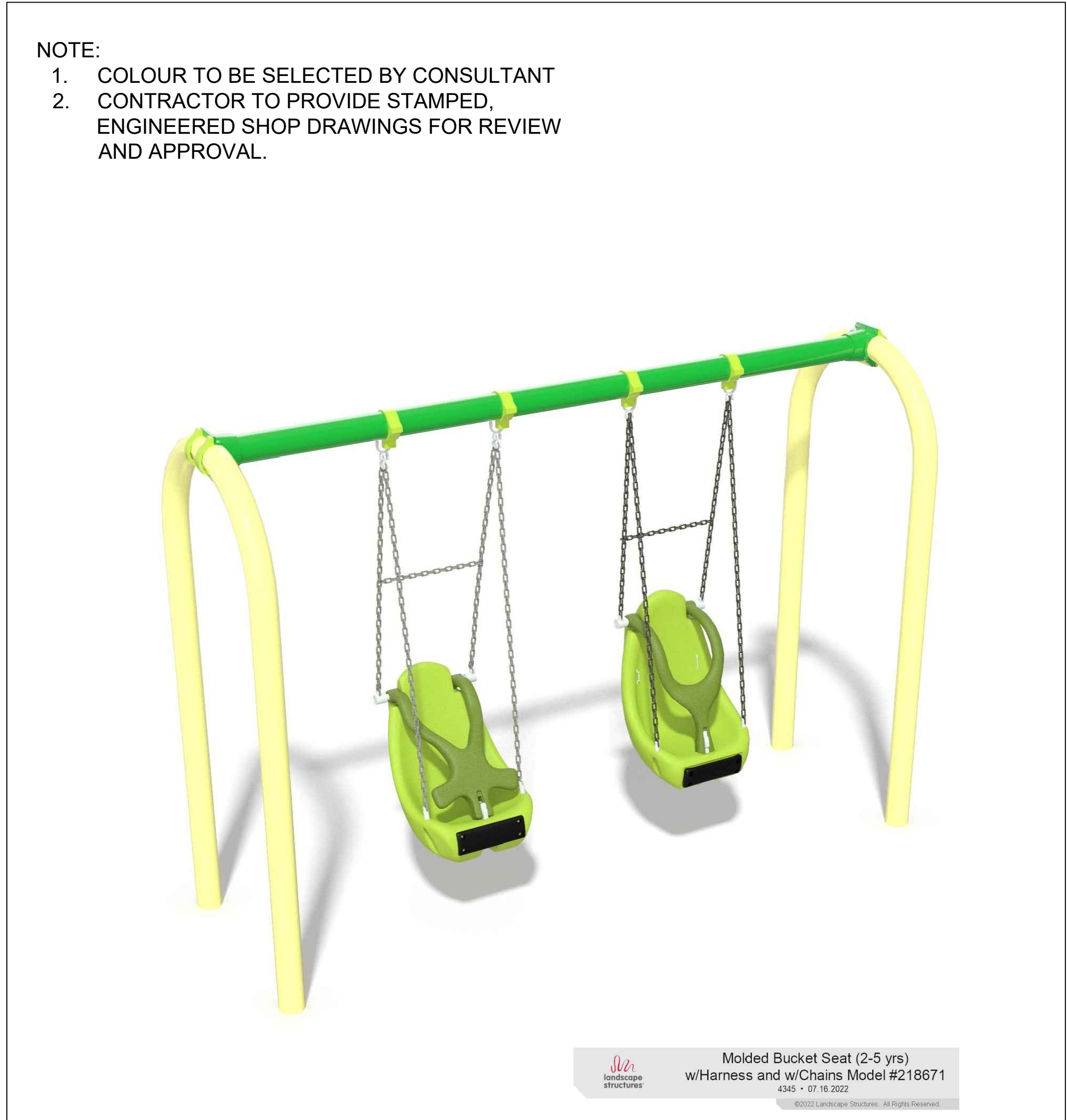
D5  
L5004  
TYPICAL OUTDOOR FAN  
IMAGE  
NOT TO SCALE



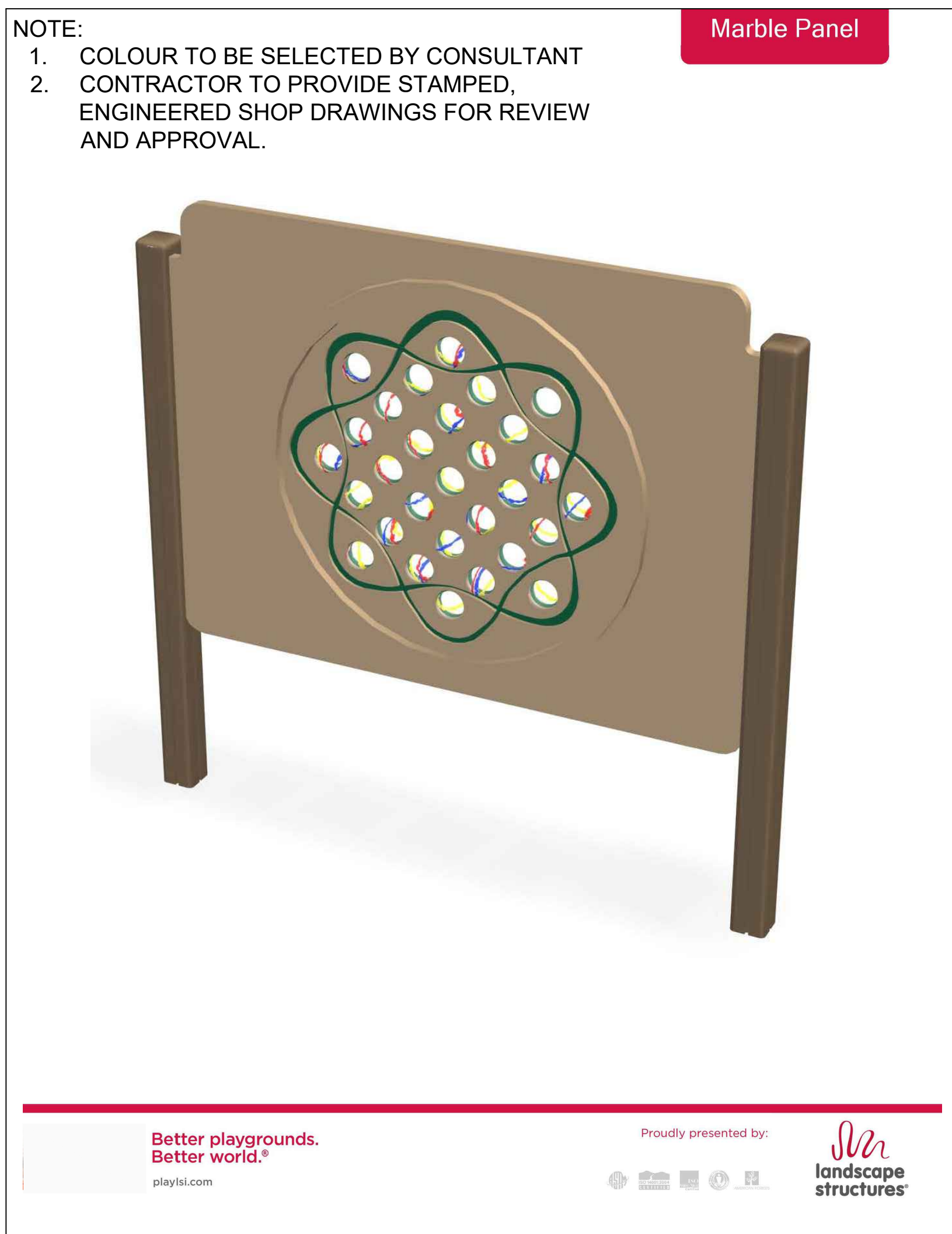
D6  
L5004  
TYPICAL PLAYGROUND WITH TUNNEL AT LEVEL 2 PRESCHOOL PLAYGROUND  
MANUFACTURER'S CUTSHEET  
NOT TO SCALE



D7  
L5004  
TYPICAL ACCESSIBLE SAND TABLE TYPE ONE AT PRESCHOOL PLAYGROUND  
MANUFACTURER'S RENDERING  
NOT TO SCALE



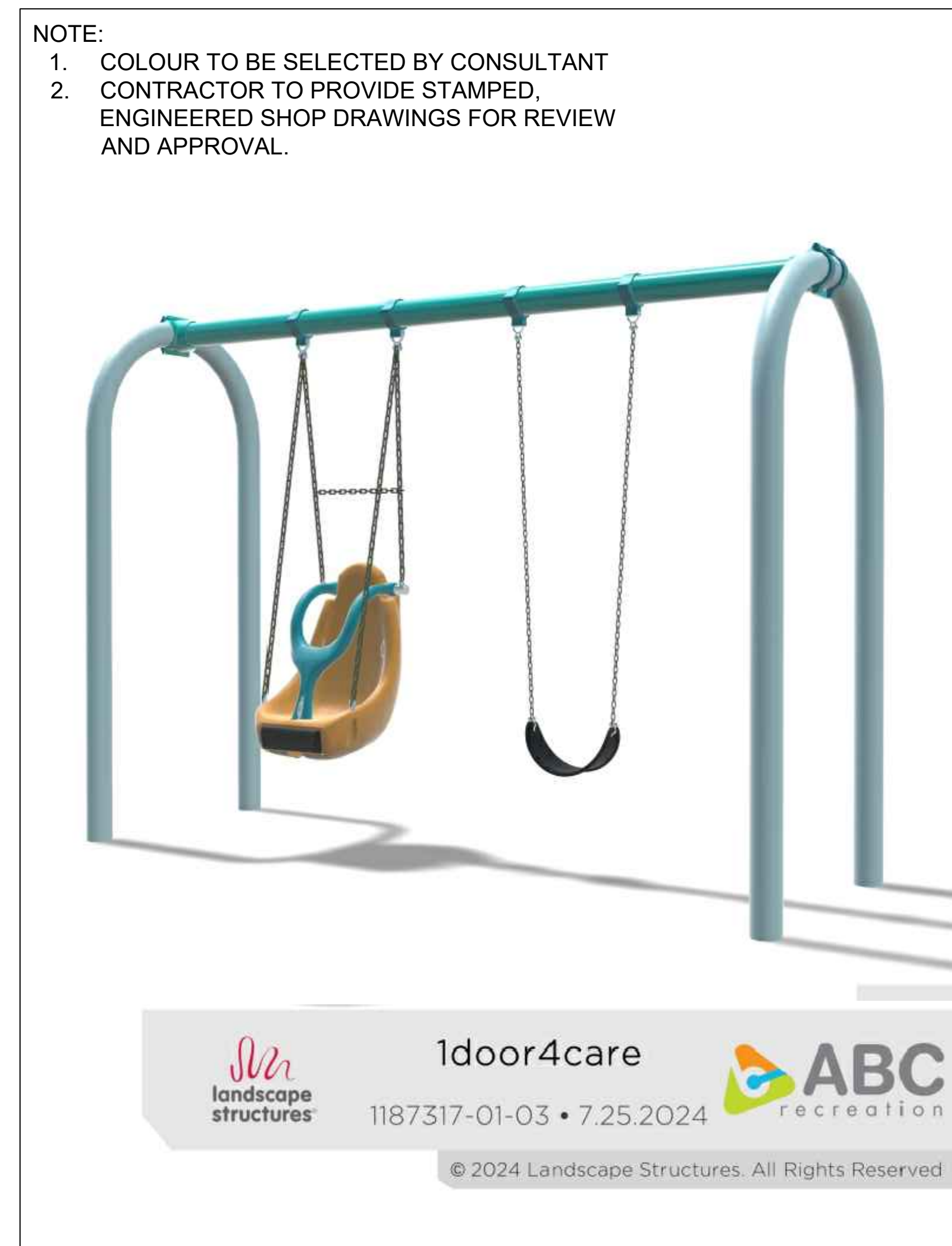
D9  
L5004  
TYPICAL SWING AT PRESCHOOL PLAYGROUND  
MANUFACTURER'S RENDERING  
NOT TO SCALE



D10  
L5004  
TYPICAL PLAY PANEL TYPE ONE AT PRESCHOOL PLAYGROUND  
MANUFACTURER'S RENDERING  
NOT TO SCALE



D11  
L5004  
TYPICAL PLAY PANEL TYPE TWO AT PRESCHOOL PLAYGROUND  
MANUFACTURER'S RENDERING  
NOT TO SCALE



D12  
L5004  
TYPICAL NON-ACCESSIBLE SWING AT LEVEL 2 SCHOOL PLAYGROUND  
MANUFACTURER'S RENDERING  
NOT TO SCALE

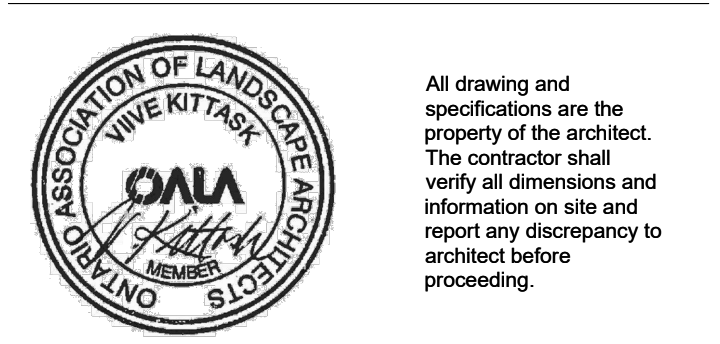


D13  
L5004  
TYPICAL FULLY ACCESSIBLE PLAY STRUCTURE AT SCHOOL PLAYGROUND  
IMAGE  
NOT TO SCALE

APPROVED  
By Lily Xu at 1:32 pm, Apr 22, 2025  
LILY XU, MCIP, RPP  
MANAGER, DEVELOPMENT REVIEW SOUTH  
PLANNING, DEVELOPMENT, AND BUILDING SERVICES  
DEPARTMENT, CITY OF OTTAWA

9	2025-02-20	ISSUED FOR SITE PLAN CONTROL	IV
8	2024-12-09	RESUBMISSION R1	IV
7	2024-11-27	ISSUED FOR 100% CD	IV
6	2024-09-26	ISSUED FOR 50% CD RESUBMISSION	IV
5	2024-08-23	ISSUED FOR 100% CD	IV
4	2024-08-07	ISSUED FOR 50% CD SUBMISSION	IV
3	2024-04-19	ISSUED FOR 100% CD SUBMISSION	IV
2	2023-12-20	ISSUED FOR BUILDING PERMIT (TUNNEL)	IV
1	2023-12-15	ISSUED FOR 50% CD SUBMISSION	IV

# date: revision: by:



CHEO Integrated Treatment Centre

401 Smyth Rd  
Ottawa, ON K1H 8L1

LANDSCAPE DETAILS

scale: AS SHOWN  
drawn by: IW/IVN  
reviewed by: VK  
job number: 2307  
plot date: 2025-02-20  
drawing number: L5004