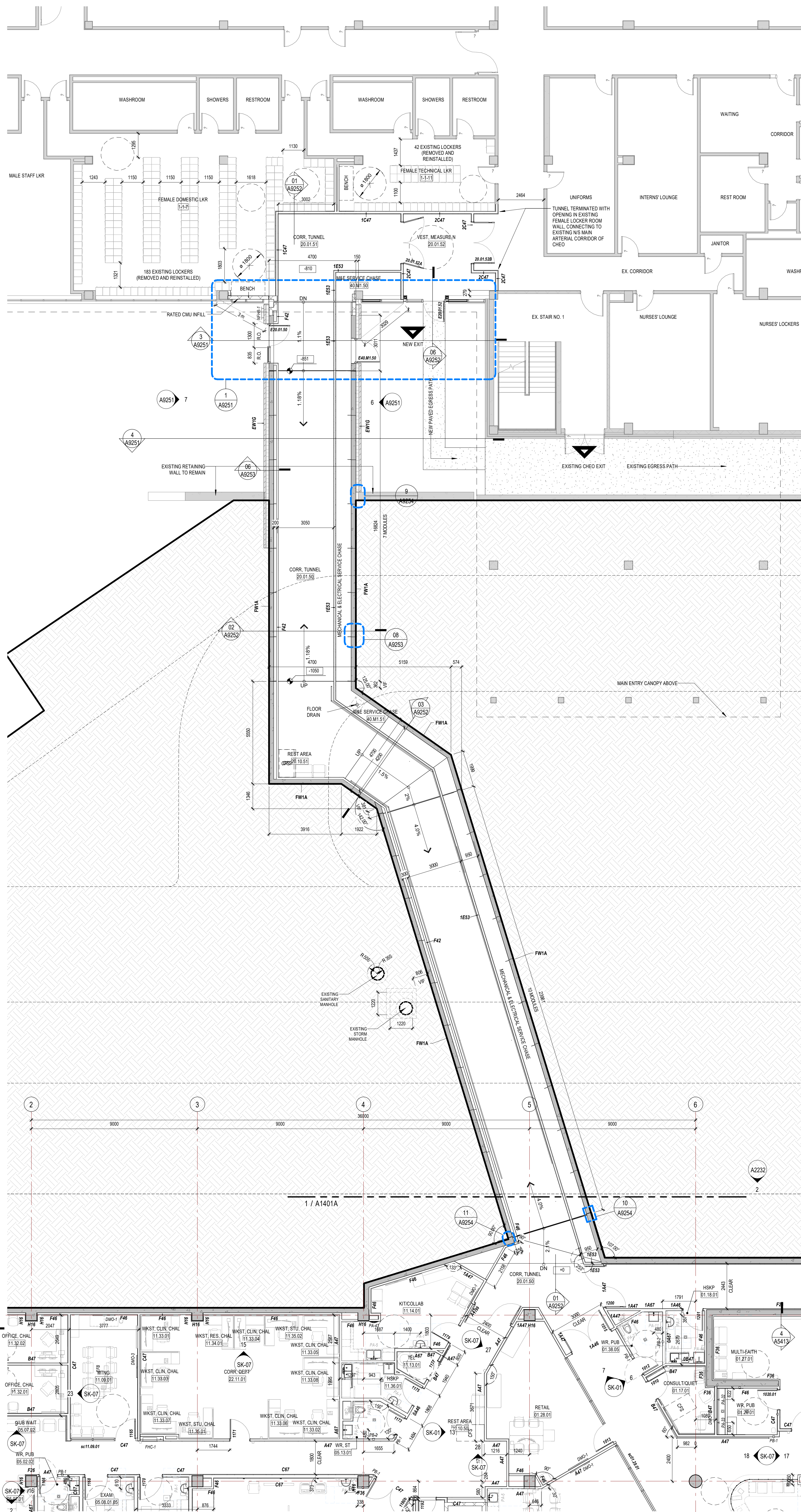


2 LEVEL 1 - RCP - ZONE C TUNNEL



1 LEVEL 1 - FLOOR PLAN - ZONE C TUNNEL

GENERAL NOTES

1. ALL OVERALL CONSTRUCTION PLANS TO BE READ IN CONJUNCTION WITH A400N ENLARGED PLANS, A400N EXTERIOR DETAILS, AND A400N INTERIOR DETAILS.
2. DIMENSIONS, UNLESS NOTED OTHERWISE, ARE MEASURED IN ORDER OF IMPORTANCE TO:
 - A. GROUND LINE
 - B. FACE OF CONCRETE PARTITION
 - C. CONSTRUCTION SHALL BE RESPONSIBLE TO REPAIR AND MAKE GOOD ANY SURFACES AFFECTED BY CONSTRUCTION.
3. CONSTRUCTION SHALL PROVIDE PARTITION CHALK LINE LAYOUT ON SLAB FOR REVIEW AND APPROVAL BY ARCHITECT.
4. DISCUSS PRIOR TO PROCEEDING WITH INSTALLATION OF TRACK AND STUDS.
5. SOUND ATTENUATION BLANKETS SHALL BE INSTALLED CONTINUOUSLY BEHIND ALL POWER, VOICE, AND DATA CABLES AND OTHER DEVICES RECESSED INTO PARTITIONS. REFER TO A400N SERIES FOR DETAILS.
6. CONTRACTOR SHALL REFER TO ROOM FINISH SCHEDULE AND FINISH SPECIFICATIONS FOR ALL BASE TYPES AND HEIGHTS.
7. ALL PARTITIONS SCHEDULED TO RECEIVE RESILIENT BASE ARE TO BE COMPLETELY FINISHED SMOOTH TO THE SLAB.
8. UNLESS NOTED OTHERWISE, DOOR LOCATIONS SHALL BE 100mm FROM FACE OF WALL TO OUTSIDE OF DOOR FRAME AND NOT LESS THAN 100mm.
9. WHERE FIRE REPAIRS OCCUR, EXTEND PARTITIONS TO UNDERSIDE OF SLAB. PACK ANY OPENINGS BETWEEN STRUCTURE OR ROOF AND PARTITIONS WITH FIRE STOPPING MATERIAL. PACK AROUND PENETRATIONS THROUGH FIRE SEPARATIONS WITH FIRE STOPPING MATERIAL. REFER TO A411, A440 SERIES, & A400N SERIES.
10. AT RECESSED PANELS AND EQUIPMENT IN FIRE SEPARATIONS, MAINTAIN THE CONTINUITY OF THE REQUIRED FIRE SEPARATIONS BEHIND THE EQUIPMENT.
11. WARP FLOORING PIPES WITH NON-COMBUSTIBLE INSULATION TO MINIMIZE SOUND TRANSMISSION.
12. PROVIDE 400mm HIGH 20 GA. SHEET METAL BLOCKING AT ALL LOCATIONS WHERE EQUIPMENT TO BE INSTALLED. BLOCKING HEIGHT TO SUIT EQUIPMENT. REFER TO MOUNTING HEIGHTS DRAWING IN THE A400N SERIES FOR FURTHER DETAILS.
13. WHERE PARTITIONS OF VARYING THICKNESS ALIGN, STEP THE STUD TRACKS AS REQUIRED TO ENSURE A FLUSH FINISHED CONDITION ON THE CONTIGUOUS EXPOSED FACE.
14. REFER TO MILLWORK DETAIL DRAWING FOR ALL MILLWORK DETAILS.
15. FOR FIRE STOPPING CABLES, REFER TO A411, A440 SERIES, & A400N SERIES.
16. TURNING WALLS AROUND COLUMNS AND PIPES TO BE BUILT AS TIGHT AS POSSIBLE UNLESS NOTED OTHERWISE.
17. CONTRACTOR TO MARK OUT ALL THERMOSTAT AND SWITCHING LOCATIONS ON SITE FOR DESIGNER APPROVAL PRIOR TO INSTALLATION.
18. REFER TO A400N SERIES FOR REFLECTED CEILING PLAN GENERAL NOTES AND LEGEND.

PARTITION PLAN LEGEND

- MILLWORK (CASEWORK)
FOR DETAILS REFER TO A512Q'S SERIES)

GYPSUM WALLBOARD LEGEND

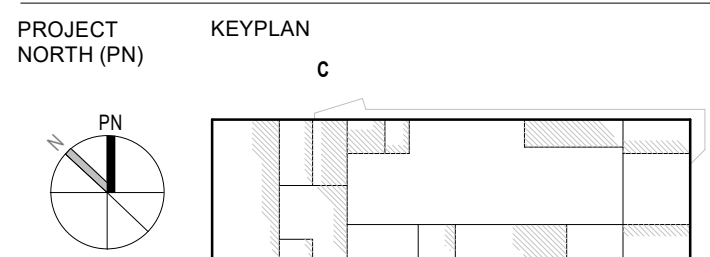
- | TYPE | DESCRIPTION |
|------|--|
| AR-1 | ABUSE RESISTANT GYPSUM BOARD UP TO A MINIMUM OF 1200MM A.F.F., TYPE 'X' ABOVE |
| AR-2 | MOISTURE & ABUSE RESISTANT GYPSUM BOARD UP TO A MINIMUM OF 1200MM A.F.F., TYPE 'X' ABOVE |
| AR-3 | ENHANCED ABUSE RESISTANT GYPSUM BOARD UP TO A MINIMUM OF 1200MM A.F.F., TYPE 'X' ABOVE |
| IR-1 | IMPACT RESISTANT GYPSUM BOARD, FULL HEIGHT |
| IR-2 | IMPACT RESISTANT GYPSUM BOARD (TWO LAYERS) TO ABOVE CEILING HEIGHT |
| IR-3 | MOISTURE & IMPACT RESISTANT GYPSUM BOARD (TWO LAYERS), TO ABOVE CEILING HEIGHT |

ISSUED FOR 100% CONSTRUCTION DOCUMENTS R1

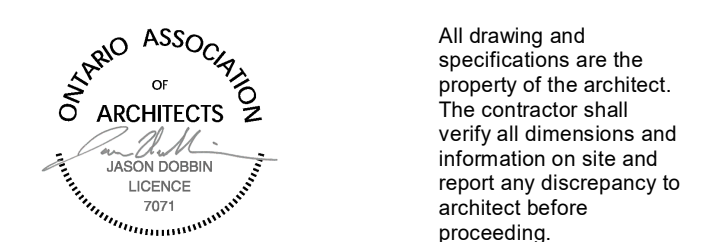
1. SPECIFIC CHANGES TO DESIGN AND PARTITION SETOUT CLOUDED WITHIN DRAWINGS
2. OVERALL DRAWING CLOUDED FOR GENERAL REVISIONS TO DIMENSIONS, TAGGING, AND OTHER ANNOTATION

Montgomery Sisam Architects Inc.
197 Spadina Avenue, Toronto, Ontario M5T 2C8 montgomerysisam.com
Tel 416.364.8079 Fax 416.364.7723

MontgomerySisam



- | # | DATE | REVISION |
|----|----------|---|
| 1 | 25/04/25 | ISSUED FOR 100% CONSTRUCTION DOCUMENTS R1 |
| 2 | 25/04/25 | ISSUED FOR 100% CONSTRUCTION DOCUMENTS R1 |
| 3 | 25/04/25 | ISSUED FOR 100% CONSTRUCTION DOCUMENTS R1 |
| 4 | 25/04/25 | ISSUED FOR 100% CONSTRUCTION DOCUMENTS R1 |
| 5 | 25/04/25 | ISSUED FOR 100% CONSTRUCTION DOCUMENTS R1 |
| 6 | 25/04/25 | ISSUED FOR 100% CONSTRUCTION DOCUMENTS R1 |
| 7 | 25/04/25 | ISSUED FOR 100% CONSTRUCTION DOCUMENTS R1 |
| 8 | 25/04/25 | ISSUED FOR 100% CONSTRUCTION DOCUMENTS R1 |
| 9 | 25/04/25 | ISSUED FOR 100% CONSTRUCTION DOCUMENTS R1 |
| 10 | 25/04/25 | ISSUED FOR 100% CONSTRUCTION DOCUMENTS R1 |
| 11 | 25/04/25 | ISSUED FOR 100% CONSTRUCTION DOCUMENTS R1 |
| 12 | 25/04/25 | ISSUED FOR 100% CONSTRUCTION DOCUMENTS R1 |
| 13 | 25/04/25 | ISSUED FOR 100% CONSTRUCTION DOCUMENTS R1 |
| 14 | 25/04/25 | ISSUED FOR 100% CONSTRUCTION DOCUMENTS R1 |
| 15 | 25/04/25 | ISSUED FOR 100% CONSTRUCTION DOCUMENTS R1 |
| 16 | 25/04/25 | ISSUED FOR 100% CONSTRUCTION DOCUMENTS R1 |
| 17 | 25/04/25 | ISSUED FOR 100% CONSTRUCTION DOCUMENTS R1 |
| 18 | 25/04/25 | ISSUED FOR 100% CONSTRUCTION DOCUMENTS R1 |
| 19 | 25/04/25 | ISSUED FOR 100% CONSTRUCTION DOCUMENTS R1 |
| 20 | 25/04/25 | ISSUED FOR 100% CONSTRUCTION DOCUMENTS R1 |



CHEO Integrated Treatment Centre

401 Smyth Rd
Ottawa, ON K1H 8L1

LEVEL 1 - FLOOR & REFLECTED
CEILING PLAN - ZONE C TUNNEL

scale: 1:100
drawn by: MSA
reviewed by: JSD
job number: 25040
plot date: 25/02/25
drawing number:

A1401C

File Number: D07-12-24-0121
Plan Number: 19223