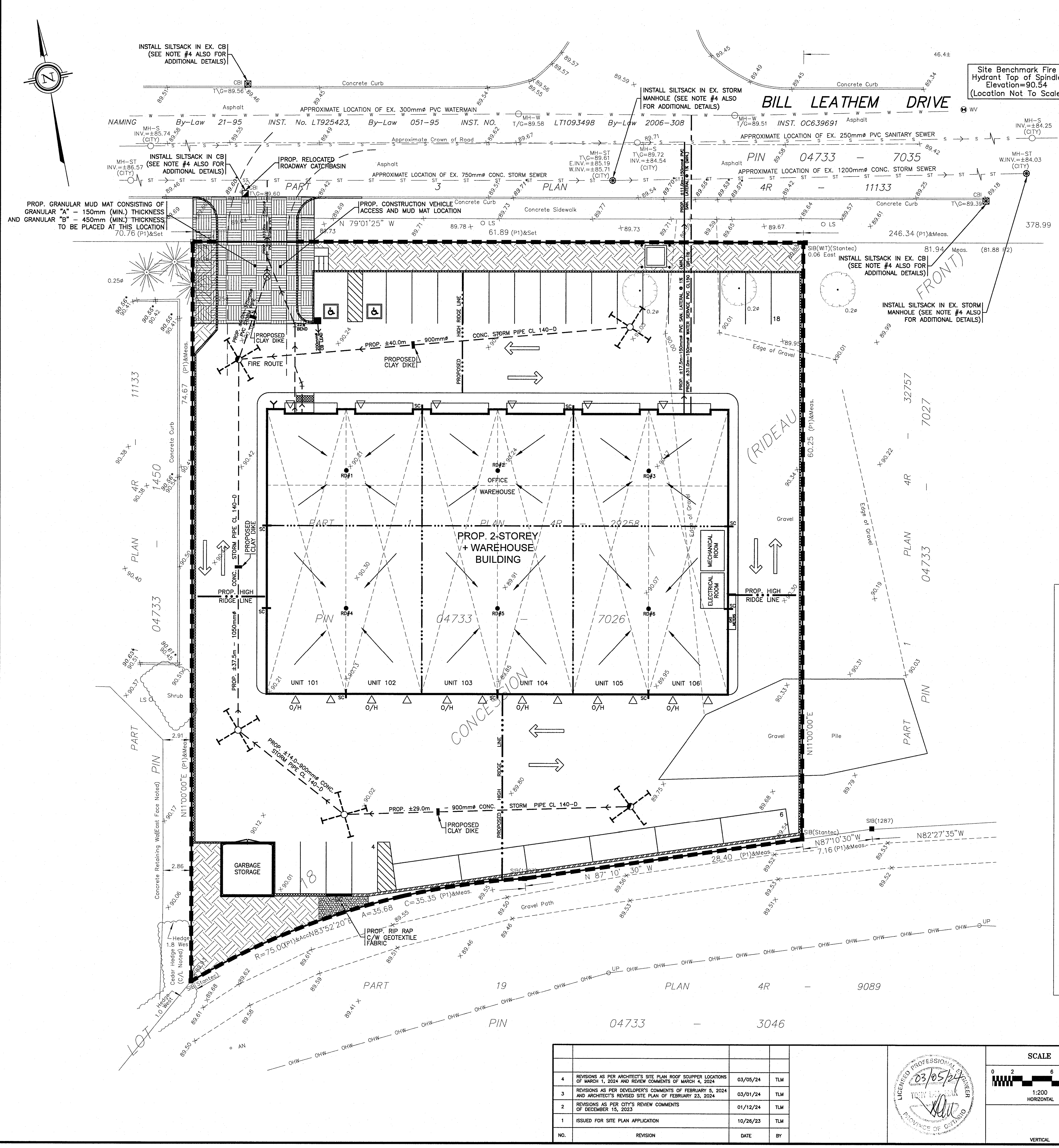


4		REVISIONS AS PER ARCHITECT'S SITE PLAN ROOF SCUPPER LOCATIONS OF MARCH 1, 2024 AND REVIEW COMMENTS OF MARCH 4, 2024	03/05/24	TLM
3		REVISIONS AS PER DEVELOPER'S COMMENTS OF FEBRUARY 5, 2024 AND ARCHITECT'S REVISED SITE PLAN OF FEBRUARY 23, 2024	03/01/24	TLM
2		REVISIONS AS PER CITY'S REVIEW COMMENTS OF DECEMBER 15, 2023	02/27/24	TLM
1		ISSUED FOR SITE PLAN APPLICATION	10/26/23	TLM
No.	REVISION	DATE	BY	

SCALE		DESIGN	T.L.M.	PROJECT 96 BILL LEATHAM DRIVE PART OF LOT 18 CONCESSION 1 (RIDEAU FRONT) GEOGRAPHIC TOWNSHIP OF NEPEAN CITY OF OTTAWA
0 2 4 6 10m		CHECKED	T.L.M.	
1:200		DRAWN BY	P.M.	
HORIZONTAL		CHECKED	T.L.M.	
VERTICAL		APPROVED	T.L.M.	DRAWING TITLE STORM DRAINAGE AREA PLAN

PROJECT No.		DATE	DRAWING No.
822-125		JUNE 2023	D-1



LEGEND

- SILT FENCE BARRIER LOCATION
- PROPOSED MUD MAT AREA
- DENOTES SILTSACK INSTALLATION IN EX. STORM MANHOLE
- DENOTES SILTSACK INSTALLATION IN EX. CATCHBASIN
- DENOTES SILTSACK INSTALLATION IN EX. RELOCATED CATCHBASIN

EROSION AND SEDIMENT CONTROL NOTES

BEST MANAGEMENT PRACTICES

EROSION AND SEDIMENT CONTROLS (BEST MANAGEMENT PRACTICES) SHALL BE PROVIDED DURING CONSTRUCTION OF THIS PROJECT. EROSION MUST BE MINIMIZED AND SEDIMENTS MUST BE REMOVED FROM CONSTRUCTION SITE RUNOFF IN ORDER TO PROTECT DOWNSTREAM AREAS. DURING ALL CONSTRUCTION, EROSION AND SEDIMENTATION SHOULD BE CONTROLLED BY THE FOLLOWING TECHNIQUES:

- MINIMIZE THE EXTENT OF EXPOSED SOILS.
- MINIMIZE THE AREA TO BE CLEARED AND GRUBBED.
- PROTECT EXPOSED SLOPES WITH PLASTIC OR SYNTHETIC MULCHES.
- INSTALL "SILTSACK" CATCH BASIN SEDIMENT CONTROL DEVICE OR EQUAL IN CATCH BASINS ALONG BILL LEATHEM DRIVE ON-SITE AND OFF-SITE WITHIN THE ROAD RIGHT OF WAY ADJACENT TO THIS PROPERTY AS RECOMMENDED BY THE MANUFACTURER. SILTSACK SHALL BE INSPECTED EVERY 2 TO 3 WEEKS AND AFTER EVERY MAJOR STORM. SILT SACS SHALL BE PLACED ON ALL STORM SEWER MAINTENANCE HOLE OPENINGS DURING CONSTRUCTION.
- INSTALL SILT FENCES AROUND THE PERIMETER OF STOCKPILES OF TOPSOIL TO BE USED OR REMOVED FROM SITE. (LOCATION TO BE DETERMINED).
- SEDIMENT CONTROL DEVICES SHALL BE INSPECTED EVERY 2 TO 3 WEEKS AND AFTER MAJOR STORMS AND CLEANED OF ANY ACCUMULATED SILT AS REQUIRED. THE DEPOSITS WILL BE DISPOSED OF AS PER THE REQUIREMENTS OF THE CONTRACT.
- IN SOME CASES SOME FILTER BARRIERS MAY BE REMOVED TEMPORARILY TO ACCOMMODATE CONSTRUCTION OPERATIONS. THE AFFECTED BARRIERS WILL BE REINSTITATED AT NIGHT WHEN CONSTRUCTION IS COMPLETED. REMOVAL SHALL NOT OCCUR IF RUNOFF OR RAINFALL IS PREDICTED UNLESS A NEW DEVICE HAS BEEN INSTALLED TO PROTECT THE EXISTING STORM AND SANITARY SEWER SYSTEMS.
- NO REFUELING OR CLEANING OF EQUIPMENT IS PERMITTED NEAR ANY EXISTING WATERWAYS.
- DURING THE CONSTRUCTION PERIOD, THE CONTRACTOR SHALL INSPECT, MAINTAIN AND REMOVE THE CONTROL MEASURES.
- THIS PROPOSED EROSION AND SEDIMENT CONTROL PLAN IS CONSIDERED BY (RVCA) A LIVING DOCUMENT WHICH MAY BE MODIFIED IN THE EVENT THE CONTROL MEASURES ARE INSUFFICIENT.
- CONTRACTOR IS RESPONSIBLE TO KEEP THE ROADS FREE AND CLEAN FROM MUD AND DEBRIS DURING THE CONSTRUCTION PERIOD.

PERSPECTIVE VIEW

SECTION

PLAN

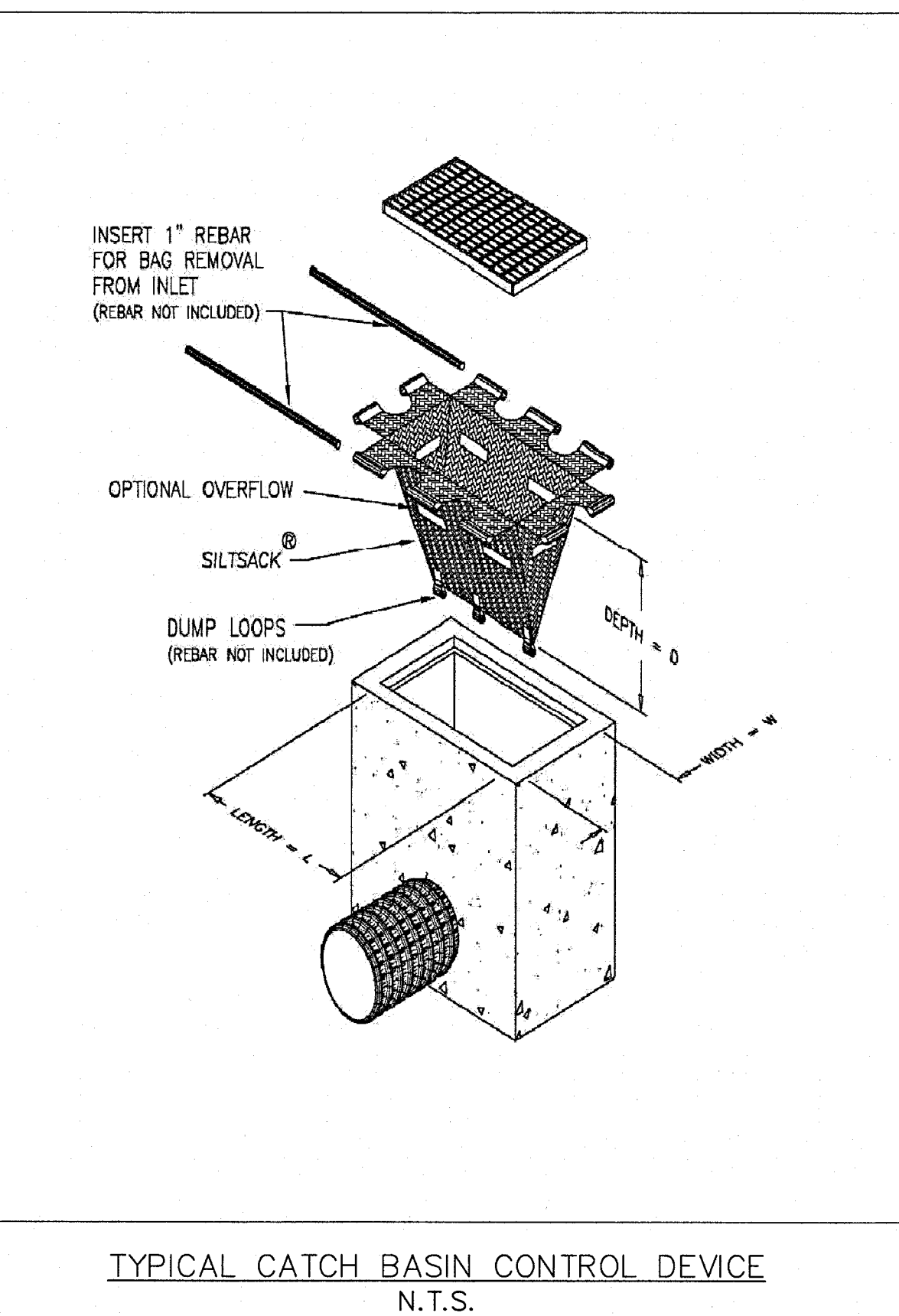
SECTION A-A

NOTE: A All dimensions are in millimetres unless otherwise shown.

ONTARIO PROVINCIAL STANDARD DRAWING Nov 2006 Rev 1

LIGHT-DUTY SILT FENCE BARRIER

OPSD 219.110



4 REVISIONS AS PER ARCHITECT'S SITE PLAN ROOF SCUPPER LOCATIONS OF MARCH 1, 2024 AND REVIEW COMMENTS OF MARCH 4, 2024		03/05/24	TLM
3 REVISIONS AS PER DEVELOPER'S COMMENTS OF FEBRUARY 5, 2024 AND ARCHITECT'S REVISED SITE PLAN OF FEBRUARY 23, 2024		03/01/24	TLM
2 REVISIONS AS PER CITY'S REVIEW COMMENTS OF DECEMBER 15, 2023		01/12/24	TLM
1 ISSUED FOR SITE PLAN APPLICATION		10/26/23	TLM
NO.	REVISION	DATE	BY

SCALE

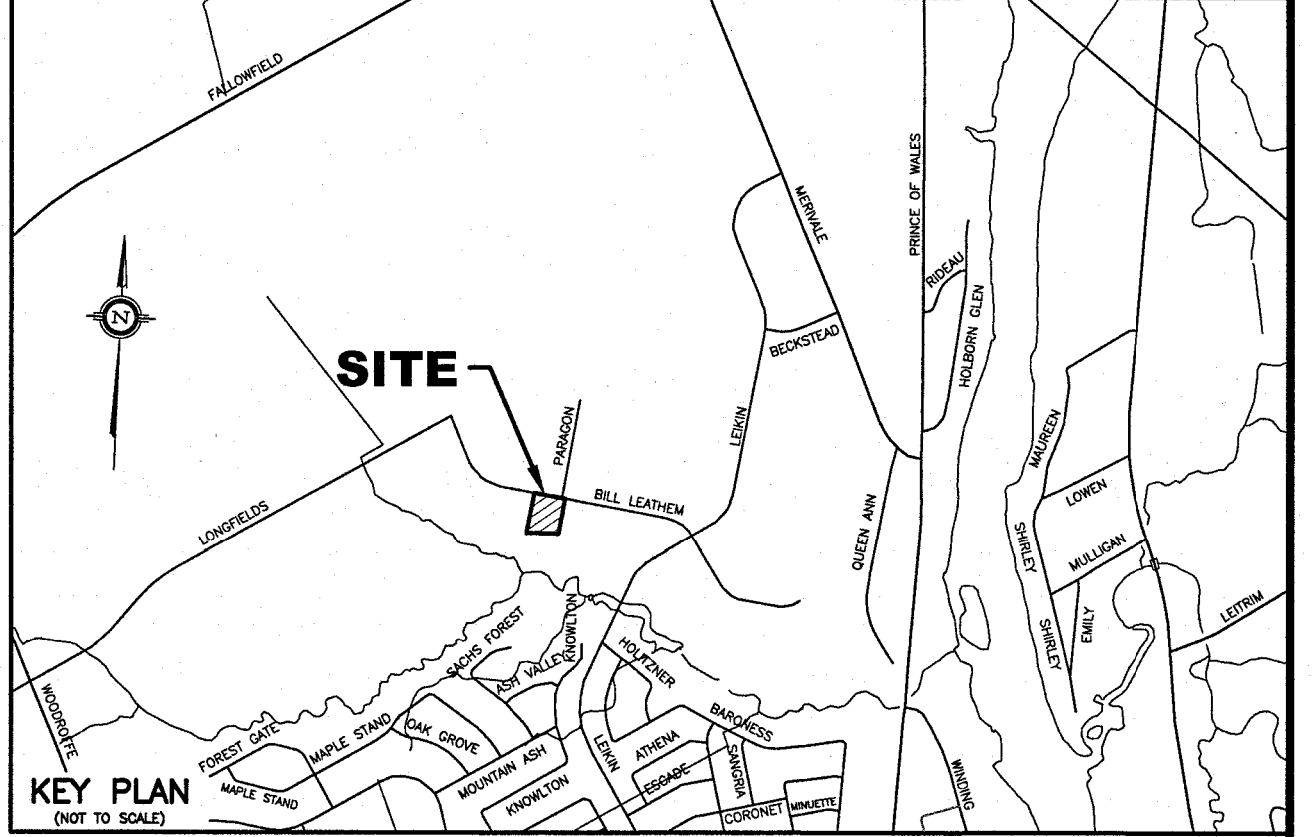
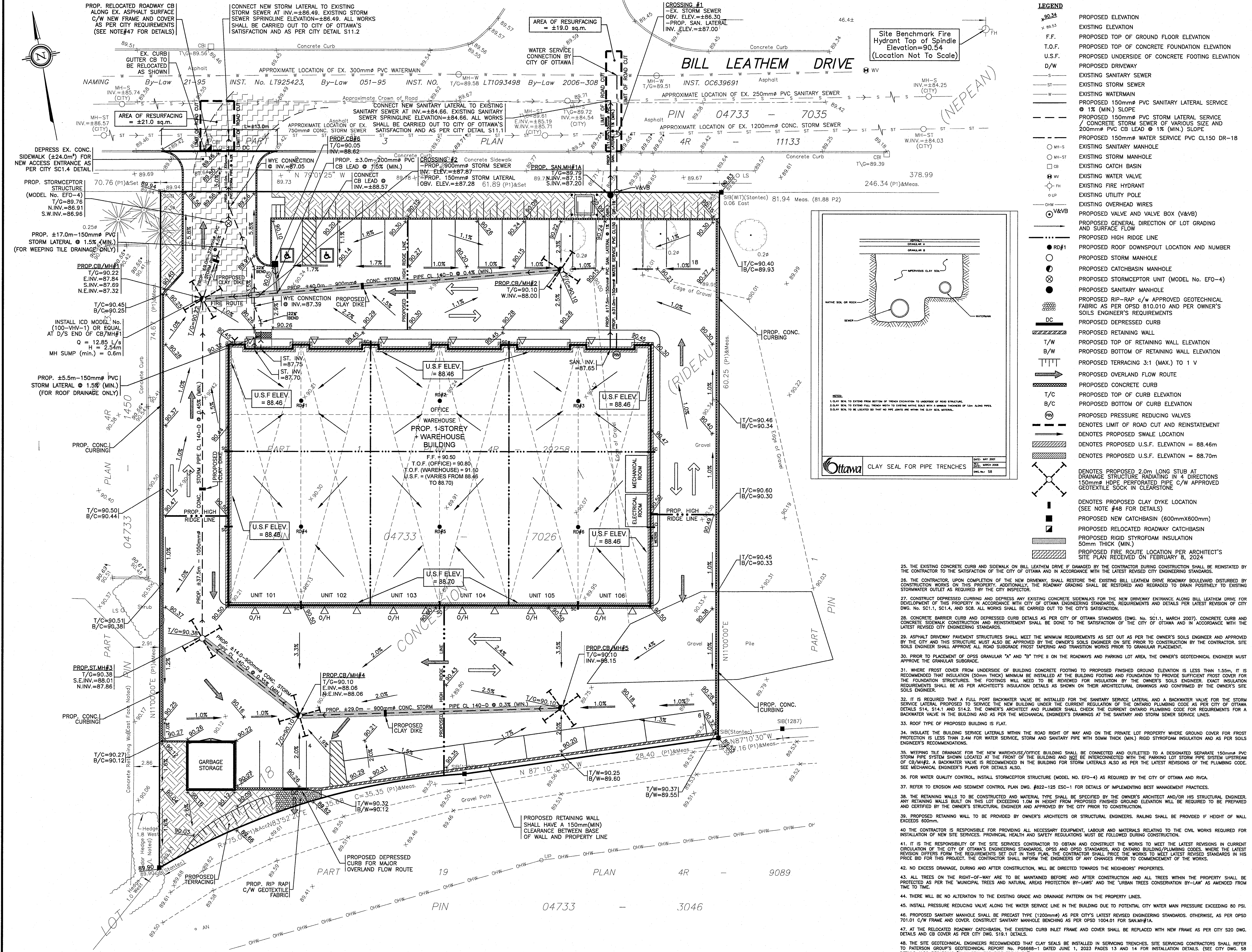
0 2 4 6 8 10m

1:200 HORIZONTAL

VERTICAL

DESIGN	T.L.M.	PROJECT	96 BILL LEATHEM DRIVE PART OF LOT 18 CONCESSION 1 (RIDEAU FRONT) GEOGRAPHIC TOWNSHIP OF NEPEAN CITY OF OTTAWA
CHECKED	T.L.M.	DRAWING TITLE	PROPOSED EROSION AND SEDIMENT CONTROL PLAN
DRAWN BY	P.M.	PROJECT No.	822-125
CHECKED	T.L.M.	DATE	JUNE 2023
APPROVED	T.L.M.	DRAWING No.	ESC-1

T.L. MAK ENGINEERING CONSULTANTS LTD.
CONSULTING ENGINEERS



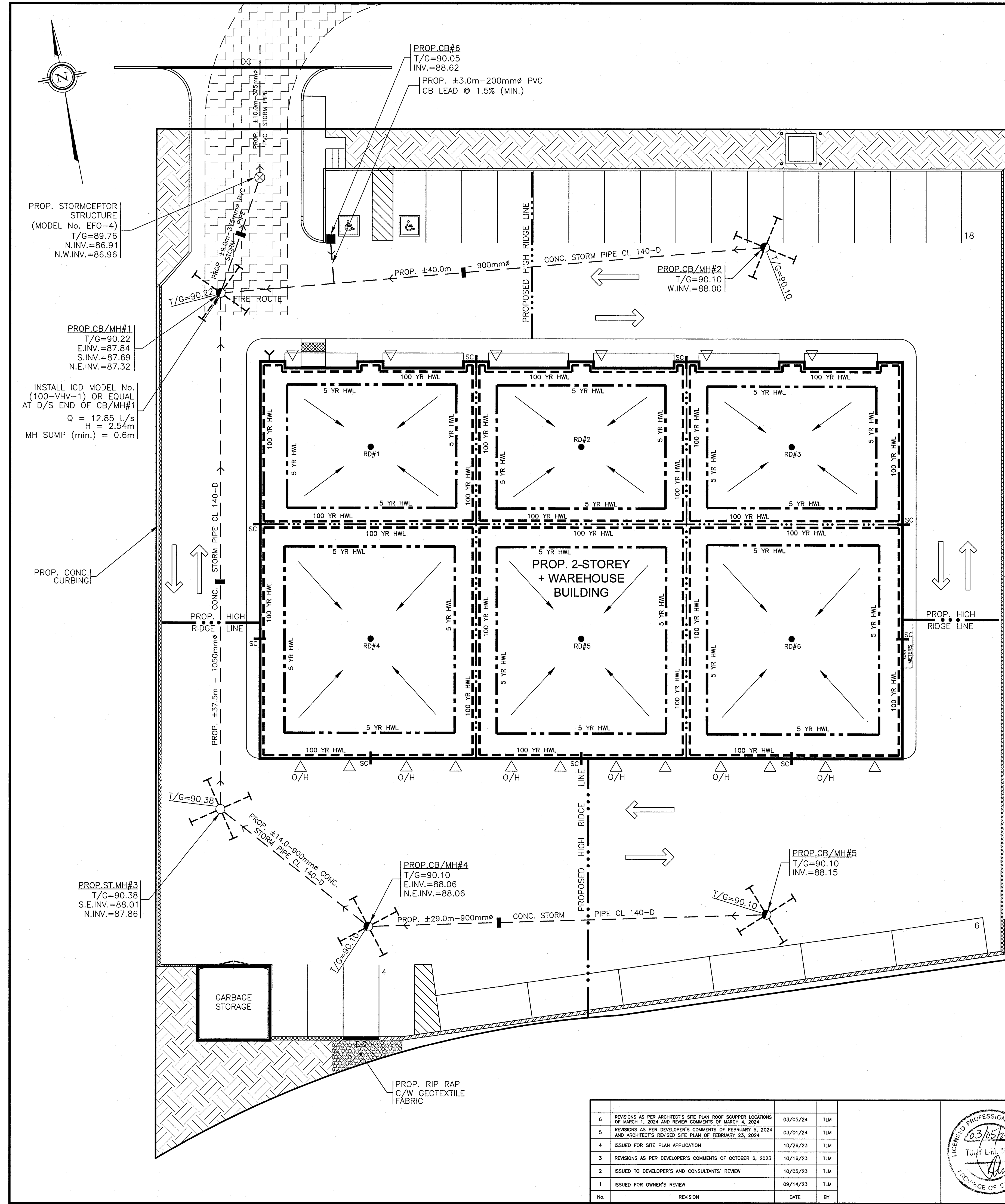
TYPICAL PAVEMENT STRUCTURE SUBJECT FOR PARKING AREAS AND ACCESS ROADWAY	
40mm HL-3 OR SUPERPAVE 12.5 ASPHALTIC CONCRETE (WEAR COURSE)	
50mm HL-8 OR SUPERPAVE 19.0 ASPHALTIC CONCRETE (BINDER COURSE)	
150mm OPSS GRAN. "A" CRUSHED STONE (BASE)	
450mm OPSS GRAN. "B" - TYPE II (SUB-BASE)	
SUBGRADE - EITHER FILL, IN SITU SOIL, OR OPSS GRANULAR B TYPE I OR II MATERIAL PLACED OVER IN SITU SOIL, BEDROCK OR FILL	
X-SECTIONAL DETAIL NOT TO SCALE	
NOTE:	
- PAVEMENT STRUCTURE SHOWN ON THIS PLAN SHALL BE VERIFIED BY THE OWNER'S SOILS ENGINEER PRIOR TO AND AFTER SUBGRADE EXCAVATION.	
- ASPHALTIC CONCRETE SHALL BE PERFORMANCE GRADE (PG. 58-34)	
- GEOTEXTILE MATERIAL SHALL BE AS PER OWNER'S GEOTECHNICAL RECOMMENDATIONS.	
- REFER TO SITE GEOTECHNICAL INVESTIGATION REPORT (REPORT NO. PG6668-1) PREPARED BY THE PATERSON GROUP DATED JUNE 1, 2023.	

- NOTES
- EXISTING SERVICES AND UTILITIES SHOWN ON THIS DRAWING WERE TAKEN FROM THE BEST AVAILABLE RECORDS BUT ARE NOT COMPLETE. CONTRACTOR IS REQUESTED TO CHECK IN THE FIELD FOR LOCATION AND ELEVATION OF PIPES AND CHECK WITH AUTHORITIES AND UTILITIES TO HIS SATISFACTION BEFORE DIGGING.
 - CONTRACTOR IS ADVISED TO COLLECT INFORMATION ON SOIL CONDITIONS AS DEEMED NECESSARY. REFER TO THE SITE GEOTECHNICAL INVESTIGATION REPORT PREPARED BY THE OWNER'S SOILS ENGINEER, THE PATERSON GROUP, DATED JUNE 1, 2023.
 - EXISTING BUILDING AND STRUCTURE LOCATION, TOPOGRAPHICAL INFORMATION ON THIS DRAWING, GEOTECHNICAL SITE BENCHMARK, SEWER, WATERMAIN, AND MANHOLE LOCATIONS, ETC. SHOWN ON THIS PLAN WERE PROVIDED BY ANNIS O'SULLIVAN VOLLEBEKK LTD. (O.S. No. 23867-23 COMPLETED ON MAY 3, 2023) RECEIVED ON MAY 9, 2023. SANITARY AND STORM SEWER INFORMATION ALONG BILL LEATHEM DRIVE WERE TAKEN FROM CITY OF OTTAWA'S PLAN AND PROFILE DRAWING ENTITLED BILL LEATHEM DRIVE - STA. 4+275 TO STA. 4+400 (DWG. No. 94031-19 DATED FEBRUARY 6, 2008) PREPARED FOR CITY OF NEPEAN. CONTRACTOR SHALL FIELD SURVEY AND VERIFY THIS INFORMATION TO HIS OR HER SATISFACTION BEFORE CONSTRUCTION. T.L. MAK ENGINEERING CONSULTANTS LTD. DOES NOT TAKE ANY RESPONSIBILITY FOR SURVEY INFORMATION SHOWN HERE. CONTRACTOR IS ADVISED TO OBTAIN AND REVIEW TO HIS OR HER SATISFACTION THIS SURVEY/TOPOGRAPHICAL PLAN BEFORE CONSTRUCTION.
 - SITE LAYOUT AND DETAILS FOR GRADING AND SWM DESIGN WERE PROVIDED BY THE OWNER'S ARCHITECT, KWC ARCHITECTS INC. AS DETAILED ON THEIR SITE PLAN (SHEET NO. A101 REV. 1 DATED JANUARY 29, 2024 - PROJECT NO. 2341) RECEIVED ON FEBRUARY 23, 2024. BUILDING STRUCTURE DETAILS WERE PROVIDED BY THE DEVELOPER ON FEBRUARY 4, 2024 PER PRELIMINARY DESIGN AND CONSTRUCTION WHICH WAS USED TO ESTABLISH THE FINISHED FLOOR, TOP OF FOUNDATION AND U.S.F. ELEVATIONS FOR THE WAREHOUSE/OFFICE BUILDING.
 - ALL GRADES SHOWN ARE GEODETIC AND METRIC (SEE ANNIS O'SULLIVAN VOLLEBEKK LTD.'S TOPOGRAPHICAL PLAN).
 - PIPE SIZES SHOWN ON THIS PLAN ARE METRIC.
 - THE CONTRACTOR IS RESPONSIBLE FOR PROVIDING ALL NECESSARY EQUIPMENT, LABOUR AND MATERIALS RELATING TO ALL CIVIL WORKS REQUIRED FOR THIS SITE AND BY THE CITY OF OTTAWA TO CONNECT INTO THE WATERMAIN AND SEWER SYSTEMS OF THE CITY.
 - ALL GRADING SHALL BE DONE TO THE SATISFACTION OF THE CITY OF OTTAWA. IF EXISTING GRADES ALONG ANY EXISTING ADJUTING PROPERTY LINES EXCEED THE PROPOSED GRADES ON THIS PROPERTY BY A HEIGHT DIFFERENTIAL THAT EXCEEDS TERRACING OF 30 TO 1, THEN INSTALL A RETAINING WALL AS PER OWNER'S REQUIREMENTS.
 - CONNECTION OF THE 150mm WATER PIPE TO THE EXISTING 300mm WATERMAIN AT BILL LEATHEM DRIVE SHALL BE BY THE CITY OF OTTAWA AND EXCAVATION, BACKFILLING AND REINSTATEMENT SHALL BE CARRIED OUT BY THE CONTRACTOR. ALL WATERWORKS TO BE CONSTRUCTED TO CITY OF OTTAWA WATER ENGINEERING STANDARDS AND SPECIFICATIONS.
 - CONTRACT ALL WATERWORKS, WATER SERVICES, SANITARY AND STORM SEWER SYSTEMS IN ACCORDANCE WITH CITY OF OTTAWA'S LATEST REVISED CITY ENGINEERING STANDARDS AND SPECIFICATIONS.
 - BEDDING AND HAUNCHING MATERIAL FOR SEWER INSTALLATIONS TO BE GRANULAR "A" INSTALLED AND COMPACTED AS PER CITY STANDARD DETAIL DWG. No. S6 AND S7.
 - STORM AND SANITARY LATERALS (150mm) SHALL BE PVC DR-28 OR EQUIVALENT. PROPOSED SANITARY AND STORM SEWER LATERALS SHALL BE PVC DR-28 OR EQUIVALENT. CONNECTION TO EXISTING SEWER SHALL BE AS PER CITY OF OTTAWA DWG. S13. ALL WORKS SHALL BE CARRIED OUT TO THE SATISFACTION OF THE CITY OF OTTAWA.
 - ALL WATER SERVICES/MAINS SHALL HAVE 2.4m COVER (MIN.). THE 150mm WATER SERVICE SHALL BE PVC CL150 DR-18. WATER SERVICE AND WATERMAIN TRENCH DETAILS AS PER CITY OF OTTAWA W17 AND W22. THURST BLOCK DETAILS AS PER CITY DETAIL W22.3 DATED MAY 2001. FITTINGS SHALL CONFORM TO APPROVED ANNA AND/OR CSA STANDARDS. CATHODIC PROTECTION FOR NEW WATERMAIN AND SERVICE AS PER CITY DETAIL W40 REV. DATE MARCH 2005.
 - IF WATER SERVICE IS LESS THAN 1.0m FROM SEWER, MANHOLE OR CATCHBASIN, CONTRACTOR IS REQUESTED TO INSULATE BETWEEN THEM WITH 50mm RIGID INSULATION (SEE CITY DETAIL DRAWING No. W25).
 - STORM MANHOLES SHALL BE PRE-CAST TYPE WITH SPECIFIED SIZING AS LISTED BELOW AND PER CITY OF OTTAWA'S LATEST REVISED ENGINEERING STANDARDS C/W FRAME AND COVER INCLUDING ADJUSTMENT RINGS.

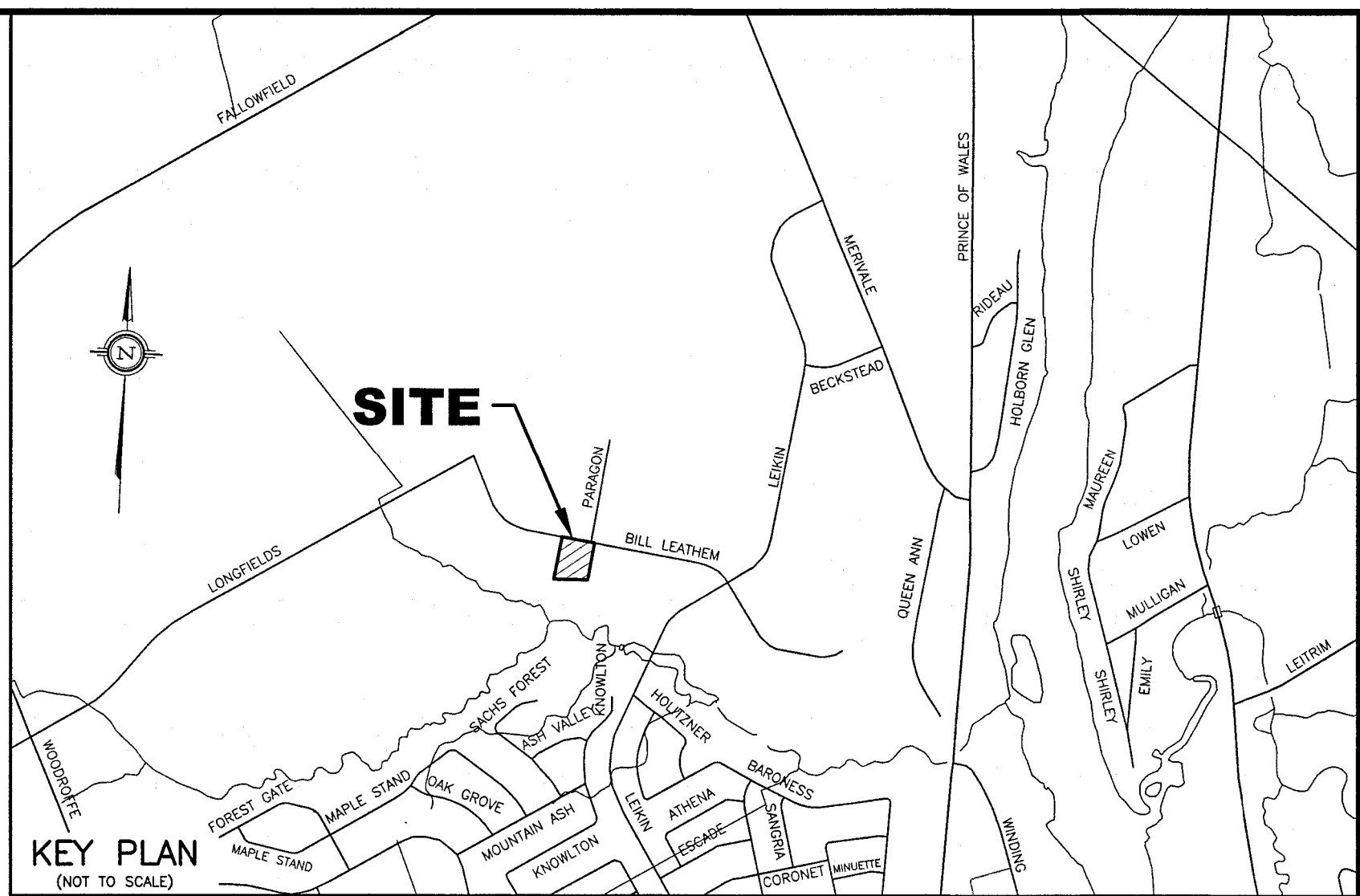
STORM DRAINAGE STRUCTURE I.D.	PROPOSED MH SIZE
CB/MH#1	2400mm DIA.
CB/MH#2	1500mm DIA.
ST/MH#3	1800mm DIA.
CB/MH#4	1800mm DIA.
CB/MH#5	1500mm DIA.

16. STORMWATER MANAGEMENT NOTES
- SEE STORM DRAINAGE REPORT NO. R-822-125 DATED MARCH 2024 ALSO FOR DETAILS.
 - REFER TO SITE GRADING PLAN DWG. No. 822-125, C-1 FOR DETAILS.
 - INSTALL THE SPECIFIED (INLET CONTROL DEVICE) HYDROX MODEL NO. 100-WAY-V OR EQUAL AT THE OUTLET END OF THE 375mm STORM PIPE IN CB/MH#1 AS DETAILED ON THIS DRAWING. THE ICD INSTALLED SHALL BE CITY OF OTTAWA APPROVED TYPE - ESTIMATED 5-YEAR INFL = 66.25m AND 100 YEAR INFL = 90.50m
 - 17. ALL PROPOSED SANITARY, STORM AND WATER SERVICES SHALL TERMINATE $\pm 1.0m$ OUTSIDE THE FOUNDATION WALL AND CONNECTION TO PLUMBING BY OTHERS.
 - 18. PRIOR TO CONCRETE FOOTING AND FOUNDATION POURING, THE OWNERS AND/OR CONTRACTOR IS RESPONSIBLE FOR ENSURING THAT THE SUBGRADE ON THIS LOT IS SUFFICIENT TO SUPPORT THE PROPOSED BUILDING.
 - 19. FOR DEVELOPMENT OF THIS LOT, THE CONTRACTOR MUST FIRST CONSTRUCT THE UNDERGROUND SANITARY, STORM AND WATER SERVICES FROM THE BUILDING TO THE MAIN WATERMAIN AND WATERMAIN TO SERVICE THE ENTIRE PROPERTY. PRIOR TO BUILDING CONCRETE FOUNDATION POURING, THE CONTRACTOR SHALL VERIFY SEWER DEPTHS TO ENSURE THAT SEWER LATERALS CAN ACHIEVE A SLOPE OF 1% (MIN.) AND STILL BE BELOW PROPOSED UNDERSIDE OF CONCRETE FOOTING ELEVATION. IF THIS IS FOUND NOT POSSIBLE, THE CONTRACTOR SHALL CONTACT THE OWNER TO REPORT THE FINDING IN ORDER TO ADJUST THE BUILDING FOUNDATION DEPTHS PRIOR TO CONCRETE POURING.
 - 20. THE CONTRACTOR IS RESPONSIBLE FOR PROVIDING ALL NECESSARY EQUIPMENT, LABOUR AND MATERIALS RELATING TO THE CIVIL WORKS REQUIRED FOR INSTALLATION OF NEW SITE SERVICES, PROVINCIAL HEALTH AND SAFETY REGULATIONS MUST BE FOLLOWED THROUGHOUT.
 - 21. IT IS THE RESPONSIBILITY OF THE SITE SERVICES CONTRACTOR TO OBTAIN AND CONSTRUCT THE WORKS TO MEET THE LATEST REVISIONS IN CURRENT CIRCULATION OF THE CITY OF OTTAWA'S ENGINEERING STANDARDS, OPS AND OPSD STANDARDS, AND OTTAWA'S BUILDING/PLUMBING CODES, WHERE THE LATEST REVISION OFFERS FROM THE REQUIREMENTS SET OUT IN THIS PLAN, THE CONTRACTOR SHALL INCREASE THE WORKS TO MEET LATEST REVISION STANDARDS IN HIS PRICE FOR THIS PROJECT. THE CONTRACTOR SHALL INFORM THE ENGINEERS OF ANY CHANGES PRIOR TO COMMENCEMENT OF THE WORKS.
 - 22. PROPOSED TOP OF FINISHED FLOOR, TOP OF FOUNDATION, VARIOUS LEVELS OF UNDERSIDE OF FOOTING ELEVATIONS SHALL BE REVIEWED AND APPROVED BY ARCHITECTS AND DEVELOPER PRIOR TO CONSTRUCTION.
 - 23. IF EXISTING GRADES ALONG ANY EXISTING ADJUTING PROPERTY LINES EXCEED THE PROPOSED GRADES ON THIS PROPERTY BY A HEIGHT DIFFERENTIAL THAT EXCEEDS TERRACING OF 30 TO 1, THEN INSTALL A RETAINING WALL AS PER OWNER'S REQUIREMENTS.
 - 24. SITE SERVING BEDDING, BACKFILL REQUIREMENTS ALONG WITH FIRE ROUTE, ACCESS LANeway AND PARKING LOT PAVEMENT STRUCTURES SHALL MEET RECOMMENDATIONS AND REQUIREMENTS SET OUT IN THE OWNER'S SOILS ENGINEER'S REPORT. ALL WORKS TO BE CARRIED OUT BY THE CONTRACTOR ON THE PROPOSED ASPHALT ACCESS LANeway AND PRIVATE DRIVEWAY STRUCTURE SHALL BE APPROVED BY SOILS ENGINEER ON SITE PRIOR TO CONSTRUCTION.

<div>ON JANUARY 30, 2024</div> <div>REVISIONS AS PER CITY'S REVIEW COMMENTS OF DECEMBER 15, 2023</div> <div>ISSUED FOR SITE PLAN APPLICATION</div> <div>REVISIONS AS PER ARCHITECT'S COMMENTS OF OCTOBER 19, 2023</div> <div>REVISIONS AS PER DEVELOPER'S COMMENTS OF OCTOBER 6, 2023</div> <div>REVISIONS AS PER ARCHITECT'S SITE PLAN ROOF SCUPPER LOCATIONS OF MARCH 1, 2024 AND REVIEW COMMENTS OF MARCH 4, 2024</div> <div>REVISIONS AS PER DEVELOPER'S COMMENTS OF FEBRUARY 5, 2024 AND ARCHITECT'S REVISED SITE PLAN OF FEBRUARY 23, 2024</div> <div>No. REVISION DATE BY No. REVISION DATE BY</div>										<div>02/02/24</div> <div>01/15/24</div> <div>10/26/23</div> <div>10/20/23</div> <div>10/16/23</div> <div>10/05/23</div> <div>09/14/23</div> <div>TLM</div> <div>TLM</div> <div>TLM</div> <div>TLM</div> <div>TLM</div> <div>TLM</div> <div>TLM</div>										<div>7</div> <div>6</div> <div>5</div> <div>4</div> <div>3</div> <div>2</div> <div>1</div> <div>03/05/24</div> <div>03/01/24</div> <div>TLM</div> <div>TLM</div> <div>TLM</div> <div>TLM</div> <div>TLM</div> <div>TLM</div> <div>TLM</div>										<div>ON JANUARY 30, 2024</div> <div>REVISIONS AS PER CITY'S REVIEW COMMENTS OF DECEMBER 15, 2023</div> <div>ISSUED FOR SITE PLAN APPLICATION</div> <div>REVISIONS AS PER ARCHITECT'S COMMENTS OF OCTOBER 19, 2023</div> <div>REVISIONS AS PER DEVELOPER'S COMMENTS OF OCTOBER 6, 2023</div> <div>REVISIONS AS PER ARCHITECT'S SITE PLAN ROOF SCUPPER LOCATIONS OF MARCH 1, 2024 AND REVIEW COMMENTS OF MARCH 4, 2024</div> <div>REVISIONS AS PER DEVELOPER'S COMMENTS OF FEBRUARY 5, 2024 AND ARCHITECT'S REVISED SITE PLAN OF FEBRUARY 23, 2024</div> <div>No. REVISION DATE BY No. REVISION DATE BY</div>										<div>02/02/24</div> <div>01/15/24</div> <div>10/26/23</div> <div>10/20/23</div> <div>10/16/23</div> <div>10/05/23</div> <div>09/14/23</div> <div>TLM</div> <div>TLM</div> <div>TLM</div> <div>TLM</div> <div>TLM</div> <div>TLM</div> <div>TLM</div>										<div>7</div> <div>6</div> <div>5</div> <div>4</div> <div>3</div> <div>2</div> <div>1</div> <div>03/05/24</div> <div>03/01/24</div> <div>TLM</div> <div>TLM</div> <div>TLM</div> <div>TLM</div> <div>TLM</div> <div>TLM</div> <div>TLM</div>										<div>ON JANUARY 30, 2024</div> <div>REVISIONS AS PER CITY'S REVIEW COMMENTS OF DECEMBER 15, 2023</div> <div>ISSUED FOR SITE PLAN APPLICATION</div> <div>REVISIONS AS PER ARCHITECT'S COMMENTS OF OCTOBER 19, 2023</div> <div>REVISIONS AS PER DEVELOPER'S COMMENTS OF OCTOBER 6, 2023</div> <div>REVISIONS AS PER ARCHITECT'S SITE PLAN ROOF SCUPPER LOCATIONS OF MARCH 1, 2024 AND REVIEW COMMENTS OF MARCH 4, 2024</div> <div>REVISIONS AS PER DEVELOPER'S COMMENTS OF FEBRUARY 5, 2024 AND ARCHITECT'S REVISED SITE PLAN OF FEBRUARY 23, 2024</div> <div>No. REVISION DATE BY No. REVISION DATE BY</div>										<div>02/02/24</div> <div>01/15/24</div> <div>10/26/23</div> <div>10/20/23</div> <div>10/16/23</div> <div>10/05/23</div> <div>09/14/23</div> <div>TLM</div> <div>TLM</div> <div>TLM</div> <div>TLM</div> <div>TLM</div> <div>TLM</div> <div>TLM</div>										<div>7</div> <div>6</div> <div>5</div> <div>4</div> <div>3</div> <div>2</div> <div>1</div> <div>03/05/24</div> <div>03/01/24</div> <div>TLM</div> <div>TLM</div> <div>TLM</div> <div>TLM</div> <div>TLM</div> <div>TLM</div> <div>TLM</div>										<div>ON JANUARY 30, 2024</div> <div>REVISIONS AS PER CITY'S REVIEW COMMENTS OF DECEMBER 15, 2023</div> <div>ISSUED FOR SITE PLAN APPLICATION</div> <div>REVISIONS AS PER ARCHITECT'S COMMENTS OF OCTOBER 19, 2023</div> <div>REVISIONS AS PER DEVELOPER'S COMMENTS OF OCTOBER 6, 2023</div> <div>REVISIONS AS PER ARCHITECT'S SITE PLAN ROOF SCUPPER LOCATIONS OF MARCH 1, 2024 AND REVIEW COMMENTS OF MARCH 4, 2024</div> <div>REVISIONS AS PER DEVELOPER'S COMMENTS OF FEBRUARY 5, 2024 AND ARCHITECT'S REVISED SITE PLAN OF FEBRUARY 23, 2024</div> <div>No. REVISION DATE BY No. REVISION DATE BY</div>										<div>02/02/24</div> <div>01/15/24</div> <div>10/26/23</div> <div>10/20/23</div> <div>10/16/23</div> <div>10/05/23</div> <div>09/14/23</div> <div>TLM</div> <div>TLM</div> <div>TLM</div> <div>TLM</div> <div>TLM</div> <div>TLM</div> <div>TLM</div>										<div>7</div> <div>6</div> <div>5</div> <div>4</div> <div>3</div> <div>2</div> <div>1</div> <div>03/05/24</div> <div>03/01/24</div> <div>TLM</div> <div>TLM</div> <div>TLM</div> <div>TLM</div> <div>TLM</div> <div>TLM</div> <div>TLM</div>										<div>ON JANUARY 30, 2024</div> <div>REVISIONS AS PER CITY'S REVIEW COMMENTS OF DECEMBER 15, 2023</div> <div>ISSUED FOR SITE PLAN APPLICATION</div> <div>REVISIONS AS PER ARCHITECT'S COMMENTS OF OCTOBER 19, 2023</div> <div>REVISIONS AS PER DEVELOPER'S COMMENTS OF OCTOBER 6, 2023</div> <div>REVISIONS AS PER ARCHITECT'S SITE PLAN ROOF SCUPPER LOCATIONS OF MARCH 1, 2024 AND REVIEW COMMENTS OF MARCH 4, 2024</div> <div>REVISIONS AS PER DEVELOPER'S COMMENTS OF FEBRUARY 5, 2024 AND ARCHITECT'S REVISED SITE PLAN OF FEBRUARY 23, 2024</div> <div>No. REVISION DATE BY No. REVISION DATE BY</div>										<div>02/02/24</div> <div>01/15/24</div> <div>10/26/23</div> <div>10/20/23</div> <div>10/16/23</div> <div>10/05/23</div> <div>09/14/23</div> <div>TLM</div> <div>TLM</div> <div>TLM</div> <div>TLM</div> <div>TLM</div> <div>TLM</div> <div>TLM</div>										<div>7</div> <div>6</div> <div>5</div> <div>4</div> <div>3</div> <div>2</div> <div>1</div> <div>03/05/24</div> <div>03/01/24</div> <div>TLM</div> <div>TLM</div> <div>TLM</div> <div>TLM</div> <div>TLM</div> <div>TLM</div> <div>TLM</div>										<div>ON JANUARY 30, 2024</div> <div>REVISIONS AS PER CITY'S REVIEW COMMENTS OF DECEMBER 15, 2023</div> <div>ISSUED FOR SITE PLAN APPLICATION</div> <div>REVISIONS AS PER ARCHITECT'S COMMENTS OF OCTOBER 19, 2023</div> <div>REVISIONS AS PER DEVELOPER'S COMMENTS OF OCTOBER 6, 2023</div> <div>REVISIONS AS PER ARCHITECT'S SITE PLAN ROOF SCUPPER LOCATIONS OF MARCH 1, 2024 AND REVIEW COMMENTS OF MARCH 4, 2024</div> <div>REVISIONS AS PER DEVELOPER'S COMMENTS OF FEBRUARY 5, 2024 AND ARCHITECT'S REVISED SITE PLAN OF FEBRUARY 23, 2024</div> <div>No. REVISION DATE BY No. REVISION DATE BY</div>										<div>02/02/24</div> <div>01/15/24</div> <div>10/26/23</div> <div>10/20/23</div> <div>10/16/23</div> <div>10/05/23</div> <div>09/14/23</div> <div>TLM</div> <div>TLM</div> <div>TLM</div> <div>TLM</div> <div>TLM</div> <div>TLM</div> <div>TLM</div>										<div>7</div> <div>6</div> <div>5</div> <div>4</div> <div>3</div> <div>2</div> <div>1</div> <div>03/05/24</div> <div>03/01/24</div> <div>TLM</div> <div>TLM</div> <div>TLM</div> <div>TLM</div> <div>TLM</div> <div>TLM</div> <div>TLM</div>										<div>ON JANUARY 30, 2024</div> <div>REVISIONS AS PER CITY'S REVIEW COMMENTS OF DECEMBER 15, 2023</div> <div>ISSUED FOR SITE PLAN APPLICATION</div> <div>REVISIONS AS PER ARCHITECT'S COMMENTS OF OCTOBER 19, 2023</div> <div>REVISIONS AS PER DEVELOPER'S COMMENTS OF OCTOBER 6, 2023</div> <div>REVISIONS AS PER ARCHITECT'S SITE PLAN ROOF SCUPPER LOCATIONS OF MARCH 1, 2024 AND REVIEW COMMENTS OF MARCH 4, 2024</div> <div>REVISIONS AS PER DEVELOPER'S COMMENTS OF FEBRUARY 5, 2024 AND ARCHITECT'S REVISED SITE PLAN OF FEBRUARY 23, 2024</div> <div>No. REVISION DATE BY No. REVISION DATE BY</div>										<div>02/02/24</div> <div>01/15/24</div> <div>10/26/23</div> <div>10/20/23</div> <div>10/16/23</div> <div>10/05/23</div> <div>09/14/23</div> <div>TLM</div> <div>TLM</div> <div>TLM</div> <div>TLM</div> <div>TLM</div> <div>TLM</div> <div>TLM</div>										<div>7</div> <div>6</div> <div>5</div> <div>4</div> <div>3</div> <div>2</div> <div>1</div> <div>03/05/24</div> <div>03/01/24</div> <div>TLM</div> <div>TLM</div> <div>TLM</div> <div>TLM</div> <div>TLM</div> <div>TLM</div> <div>TLM</div>										<div>ON JANUARY 30, 2024</div> <div>REVISIONS AS PER CITY'S REVIEW COMMENTS OF DECEMBER 15, 2023</div> <div>ISSUED FOR SITE PLAN APPLICATION</div> <div>REVISIONS AS PER ARCHITECT'S COMMENTS OF OCTOBER 19, 2023</div> <div>REVISIONS AS PER DEVELOPER'S COMMENTS OF OCTOBER 6, 2023</div> <div>REVISIONS AS PER ARCHITECT'S SITE PLAN ROOF SCUPPER LOCATIONS OF MARCH 1, 2024 AND REVIEW COMMENTS OF MARCH 4, 2024</div> <div>REVISIONS AS PER DEVELOPER'S COMMENTS OF FEBRUARY 5, 2024 AND ARCHITECT'S REVISED SITE PLAN OF FEBRUARY 23, 2024</div> <div>No. REVISION DATE BY No. REVISION DATE BY</div>										<div>02/02/24</div> <div>01/15/24</div> <div>10/26/23</div> <div>10/20/23</div> <div>10/16/23</div> <div>10/05/23</div> <div>09/14/23</div> <div>TLM</div> <div>TLM</div> <div>TLM</div> <div>TLM</div> <div>TLM</div> <div>TLM</div> <div>TLM</div>										<div>7</div> <div>6</div> <div>5</div> <div>4</div> <div>3</div> <div>2</div> <div>1</div> <div>03/05/24</div> <div>03/01/24</div> <div>TLM</div> <div>TLM</div> <div>TLM</div> <div>TLM</div> <div>TLM</div> <div>TLM</div> <div>TLM</div>										<div>ON JANUARY 30, 2024</div> <div>REVISIONS AS PER CITY'S REVIEW COMMENTS OF DECEMBER 15, 2023</div> <div>ISSUED FOR SITE PLAN APPLICATION</div> <div>REVISIONS AS PER ARCHITECT'S COMMENTS OF OCTOBER 19, 2023</div> <div>REVISIONS AS PER DEVELOPER'S COMMENTS OF OCTOBER 6, 2023</div> <div>REVISIONS AS PER ARCHITECT'S SITE PLAN ROOF SCUPPER LOCATIONS OF MARCH 1, 2024 AND REVIEW COMMENTS OF MARCH 4, 2024</div> <div>REVISIONS AS PER DEVELOPER'S COMMENTS OF FEBRUARY 5, 2024 AND ARCHITECT'S REVISED SITE PLAN OF FEBRUARY 23, 2024</div> <div>No. REVISION DATE BY No. REVISION DATE BY</div>										<div>02/02/24</div> <div>01/15/24</div> <div>10/26/23</div> <div>10/20/23</div> <div>10/16/23</div> <div>10/05/23</div> <div>09/14/23</div> <div>TLM</div> <div>TLM</div> <div>TLM</div> <div>TLM</div> <div>TLM</div> <div>TLM</div> <div>TLM</div>										<div>7</div> <div>6</div> <div>5</div> <div>4</div> <div>3</div> <div>2</div> <div>1</div> <div>03/05/24</div> <div>03/01/24</div> <div>TLM</div> <div>TLM</div> <div>TLM</div> <div>TLM</div> <div>TLM</div> <div>TLM</div> <div>TLM</div>										<div>ON JANUARY 30, 2024</div> <div>REVISIONS AS PER CITY'S REVIEW COMMENTS OF DECEMBER 15, 2023</div> <div>ISSUED FOR SITE PLAN APPLICATION</div> <div>REVISIONS AS PER ARCHITECT'S COMMENTS OF OCTOBER 19, 2023</div> <div>REVISIONS AS PER DEVELOPER'S COMMENTS OF OCTOBER 6, 2023</div> <div>REVISIONS AS PER ARCHITECT'S SITE PLAN ROOF SCUPPER LOCATIONS OF MARCH 1, 2024 AND REVIEW COMMENTS OF MARCH 4, 2024</div> <div>REVISIONS AS PER DEVELOPER'S COMMENTS OF FEBRUARY 5, 2024 AND ARCHITECT'S REVISED SITE PLAN OF FEBRUARY 23, 2024</div> <div>No. REVISION DATE BY No. REVISION DATE BY</div>										<div>02/02/24</div> <div>01/15/24</div> <div>10/26/23</div> <div>10/20/23</div> <div>10/16/23</div> <div>10/05/23</div> <div>09/14/23</div> <div>TLM</div> <div>TLM</div> <div>TLM</div> <div>TLM</div> <div>TLM</div> <div>TLM</div> <div>TLM</div>										<div>7</div> <div>6</div> <div>5</div> <div>4</div> <div>3</div> <div>2</div> <div>1</div> <div>03/05/24</div> <div>03/01/24</div> <div>TLM</div> <div>TLM</div> <div>TLM</div> <div>TLM</div> <div>TLM</div> <div>TLM</div> <div>TLM</div>										<div>ON JANUARY 30, 2024</div> <div>REVISIONS AS PER CITY'S REVIEW COMMENTS OF DECEMBER 15, 2023</div> <div>ISSUED FOR SITE PLAN APPLICATION</div> <div>REVISIONS AS PER ARCHITECT'S COMMENTS OF OCTOBER 19, 2023</div> <div>REVISIONS AS PER DEVELOPER'S COMMENTS OF OCTOBER 6, 2023</div> <div>REVISIONS AS PER ARCHITECT'S SITE PLAN ROOF SCUPPER LOCATIONS OF MARCH 1, 2024 AND REVIEW COMMENTS OF MARCH 4, 2024</div> <div>REVISIONS AS PER DEVELOPER'S COMMENTS OF FEBRUARY 5, 2024 AND ARCHITECT'S REVISED SITE PLAN OF FEBRUARY 23, 2024</div> <div>No. REVISION DATE BY No. REVISION DATE BY</div>										<div>02/02/24</div> <div>01/15/24</div> <div>10/26/23</div> <div>10/20/23</div> <div>10/16/23</div> <div>10/05/23</div> <div>09/14/23</div> <div>TLM</div> <div>TLM</div> <div>TLM</div> <div>TLM</div> <div>TLM</div> <div>TLM</div> <div>TLM</div>										<div>7</div> <div>6</div> <div>5</div> <div>4</div> <div>3</div> <div>2</div> <div>1</div> <div>03/05/24</div> <div>03/01/24</div> <div>TLM</div> <div>TLM</div> <div>TLM</div> <div>TLM</div> <div>TLM</div> <div>TLM</div> <div>TLM</div>										<div>ON JANUARY 30, 2024</div> <div>REVISIONS AS PER CITY'S REVIEW COMMENTS OF DECEMBER 15, 2023</div> <div>ISSUED FOR SITE PLAN APPLICATION</div> <div>REVISIONS AS PER ARCHITECT'S COMMENTS OF OCTOBER 19, 2023</div> <div>REVISIONS AS PER DEVELOPER'S COMMENTS OF OCTOBER 6, 2023</div> <div>REVISIONS AS PER ARCHITECT'S SITE PLAN ROOF SCUPPER LOCATIONS OF MARCH 1, 2024 AND REVIEW COMMENTS OF MARCH 4, 2024</div> <div>REVISIONS AS PER DEVELOPER'S COMMENTS OF FEBRUARY 5, 2024 AND ARCHITECT'S REVISED SITE PLAN OF FEBRUARY 23, 2024</div> <div>No. REVISION DATE BY No. REVISION DATE BY</div>										<div>02/02/24</div> <div>01/15/24</div> <div>10/26/23</div> <div>10/20/23</div> <div>10/16/23</div> <div>10/05/23</div> <div>09/14/23</div> <div>TLM</div> <div>TLM</div> <div>TLM</div> <div>TLM</div> <div>TLM</div> <div>TLM</div> <div>TLM</div>										<div>7</div> <div>6</div> <div>5</div> <div>4</div> <div>3</div> <div>2</div> <div>1</div> <div>03/05/24</div> <div>03/01/24</div> <div>TLM</div> <div>TLM</div> <div>TLM</div> <div>TLM</div> <div>TLM</div> <div>TLM</div> <div>TLM</div>										<div>ON JANUARY 30, 2024</div> <div>REVISIONS AS PER CITY'S REVIEW COMMENTS OF DECEMBER 15, 2023</div> <div>ISSUED FOR SITE PLAN APPLICATION</div> <div>REVISIONS AS PER ARCHITECT'S COMMENTS OF OCTOBER 19, 2023</div> <div>REVISIONS AS PER DEVELOPER'S COMMENTS OF OCTOBER 6, 2023</div> <div>REVISIONS AS PER ARCHITECT'S SITE PLAN ROOF SCUPPER LOCATIONS OF MARCH 1, 2024 AND REVIEW COMMENTS OF MARCH 4, 2024</div> <div>REVISIONS AS PER DEVELOPER'S COMMENTS OF FEBRUARY 5, 2024 AND ARCHITECT'S REVISED SITE PLAN OF FEBRUARY 23, 2024</div> <div>No. REVISION DATE BY No. REVISION DATE BY</div>										<div>02/02/24</div> <div>01/15/24</div> <div>10/26/23</div> <div>10/20/23</div> <div>10/16/23</div> <div>10/05/23</div> <div>09/14/23</div> <div>TLM</div> <div>TLM</div> <div>TLM</div> <div>TLM</div> <div>TLM</div> <div>TLM</div> <div>TLM</div>										<div>7</div> <div>6</div> <div>5</div> <div>4</div> <div>3</div> <div>2</div> <div>1</div> <div>03/05/24</div> <div>03/01/24</div> <div>TLM</div> <div>TLM</div> <div>TLM</div> <div>TLM</div> <div>TLM</div> <div>TLM</div> <div>TLM</div>										<div>ON JANUARY 30, 2024</div> <div>REVISIONS AS PER CITY'S REVIEW COMMENTS OF DECEMBER 15, 2023</div> <div>ISSUED FOR SITE PLAN APPLICATION</div> <div>REVISIONS AS PER ARCHITECT'S COMMENTS OF OCTOBER 19, 2023</div> <div>REVISIONS AS PER DEVELOPER'S COMMENTS OF OCTOBER 6, 2023</div> <div>REVISIONS AS PER ARCHITECT'S SITE PLAN ROOF SCUPPER LOCATIONS OF MARCH 1, 2024 AND REVIEW COMMENTS OF MARCH 4, 2024</div> <div>REVISIONS AS PER DEVELOPER'S COMMENTS OF FEBRUARY 5, 2024 AND ARCHITECT'S REVISED SITE PLAN OF FEBRUARY 23, 2024</div> <div>No. REVISION DATE BY No. REVISION DATE BY</div>										<div>02/02/24</div> <div>01/15/24</div> <div>10/26/23</div> <div>10/20/23</div> <div>10/16/23</div> <div>10/05/23</div> <div>09/14/23</div> <div>TLM</div> <div>TLM</div> <div>TLM</div> <div>TLM</div> <div>TLM</div> <div>TLM</div> <div>TLM</div>										<div>7</div> <div>6</div> <div>5</div> <div>4</div> <div>3</div> <div>2</div> <div>1</div> <div>03/05/24</div> <div>03/01/24</div> <div>TLM</div> <div>TLM</div> <div>TLM</div> <div>TLM</div> <div>TLM</div> <div>TLM</div> <div>TLM</div>										<div>ON JANUARY 30, 2024</div> <div>REVISIONS AS PER CITY'S REVIEW COMMENTS OF DECEMBER 15, 2023</div> <div>ISSUED FOR SITE PLAN APPLICATION</div> <div>REVISIONS AS PER ARCHITECT'S COMMENTS OF OCTOBER 19, 2023</div> <div>REVISIONS AS PER DEVELOPER'S COMMENTS OF OCTOBER 6, 2023</div> <div>REVISIONS AS PER ARCHITECT'S SITE PLAN ROOF SCUPPER LOCATIONS OF MARCH 1, 2024 AND REVIEW COMMENTS OF MARCH 4, 2024</div> <div>REVISIONS AS PER DEVELOPER'S COMMENTS OF FEBRUARY 5, 2024 AND ARCHITECT'S REVISED SITE PLAN OF FEBRUARY 23, 2024</div> <div>No. REVISION DATE BY No. REVISION DATE BY</div>										<div>02/02/24</div> <div>01/15/24</div> <div>10/26/23</div> <div>10/20/23</div> <div>10/16/23</div> <div>10/05/23</div> <div>09/14/23</div> <div>TLM</div> <div>TLM</div> <div>TLM</div> <div>TLM</div> <div>TLM</div> <div>TLM</div> <div>TLM</div>										<div>7</div> <div>6</div> <div>5</div> <div>4</div> <div>3</div> <div>2</div> <div>1</div> <div>03/05/24</div> <div>03/01/24</div> <div>TLM</div> <div>TLM</div> <div>TLM</div> <div>TLM</div> <div>TLM</div> <div>TLM</div> <div>TLM</div>										<div>ON JANUARY 30, 2024</div> <div>REVISIONS AS PER CITY'S REVIEW COMMENTS OF DECEMBER 15, 2023</div> <div>ISSUED FOR SITE PLAN APPLICATION</div> <div>REVISIONS AS PER ARCHITECT'S COMMENTS OF OCTOBER 19, 2023</div> <div>REVISIONS AS PER DEVELOPER'S COMMENTS OF OCTOBER 6, 2023</div> <div>REVISIONS AS PER ARCHITECT'S SITE PLAN ROOF SCUPPER LOCATIONS OF MARCH 1, 2024 AND REVIEW COMMENTS OF MARCH 4, 2024</div> <div>REVISIONS AS PER DEVELOPER'S COMMENTS OF FEBRUARY 5, 2024 AND ARCHITECT'S REVISED SITE PLAN OF FEBRUARY 23, 2024</div> <div>No. REVISION DATE BY No. REVISION DATE BY</div>										<div>02/02/24</div> <div>01/15/24</div> <div>10/26/23</div> <div>10/20/23</div> <div>10/16/23</div> <div>10/05/23</div> <div>09/14/23</div> <div>TLM</div> <div>TLM</div> <div>TLM</div> <div>TLM</div> <div>TLM</div> <div>TLM</div> <div>TLM</div>										<div>7</div> <div>6</div> <div>5</div> <div>4</div> <div>3</div> <div>2</div> <div>1</div> <div>03/05/24</div> <div>03/01/24</div> <div>TLM</div> <div>TLM</div> <div>TLM</div> <div>TLM</div> <div>TLM</div> <div>TLM</div> <div>TLM</div>										<div>ON JANUARY 30, 2024</div> <div>REVISIONS AS PER CITY'S REVIEW COMMENTS OF DECEMBER 15, 2023</div> <div>ISSUED FOR SITE PLAN APPLICATION</div> <div>REVISIONS AS PER ARCHITECT'S COMMENTS OF OCTOBER 19, 2023</div> <div>REVISIONS AS PER DEVELOPER'S COMMENTS OF OCTOBER 6, 2023</div> <div>REVISIONS AS PER ARCHITECT'S SITE PLAN ROOF SCUPPER LOCATIONS OF MARCH 1, 2024 AND REVIEW COMMENTS OF MARCH 4, 2024</div> <div>REVISIONS AS PER DEVELOPER'S COMMENTS OF FEBRUARY 5, 2024 AND ARCHITECT'S REVISED SITE PLAN OF FEBRUARY 23, 2024</div> <div>No. REVISION DATE BY No. REVISION DATE BY</div>										<div>02/02/24</div> <div>01/15/24</div> <div>10/26/23</div> <div>10/20/23</div> <div>10/16/23</div> <div>10/05/23</div> <div>09/14/23</div> <div>TLM</div> <div>TLM</div> <div>TLM</div> <div>TLM</div> <div>TLM</div> <div>TLM</div> <div>TLM</div>										<div>7</div> <div>6</div> <div>5</div> <div>4</div> <div>3</div> <div>2</div> <div>1</div> <div>03/05/24</div> <div>03/01/24</div> <div>TLM</div> <div>TLM</div> <div>TLM</div> <div>TLM</div> <div>TLM</div> <div>TLM</div> <div>TLM</div>										<div>ON JANUARY 30, 2024</div> <div>REVISIONS AS PER CITY'S REVIEW COMMENTS OF DECEMBER 15, 2023</div> <div>ISSUED FOR SITE PLAN APPLICATION</div> <div>REVISIONS AS PER ARCHITECT'S COMMENTS OF OCTOBER 19, 2023</div> <div>REVISIONS AS PER DEVELOPER'S COMMENTS OF OCTOBER 6, 2023</div> <div>REVISIONS AS PER ARCHITECT'S SITE PLAN ROOF SCUPPER LOCATIONS OF MARCH 1, 2024 AND REVIEW COMMENTS OF MARCH 4, 2024</div> <div>REVISIONS AS PER DEVELOPER'S COMMENTS OF FEBRUARY 5, 2024 AND ARCHITECT'S REVISED SITE PLAN OF FEBRUARY 23, 2024</div> <div>No. REVISION DATE BY No. REVISION DATE BY</div>										<div>02/02/24</div> <div>01/15/24</div> <div>10/26/23</div> <div>10/20/23</div> <div>10/16/23</div> <div>10/05/23</div> <div>09/14/23</div> <div>TLM</div> <div>TLM</div> <div>TLM</div> <div>TLM</div> <div>TLM</div> <div>TLM</div> <div>TLM</div>										<div>7</div> <div>6</div> <div>5</div> <div>4</div> <div>3</div> <div>2</div> <div>1</div> <div>03/05/24</div> <div>03/01/24</div> <div>TLM</div> <div>TLM</div> <div>TLM</div> <div>TLM</div> <div>TLM</div> <div>TLM</div> <div>TLM</div>										<div>ON JANUARY 30, 2024</div> <div>REVISIONS AS PER CITY'S REVIEW COMMENTS OF DECEMBER 15, 2023</div> <div>ISSUED FOR SITE PLAN APPLICATION</div> <div>REVISIONS AS PER ARCHITECT'S COMMENTS OF OCTOBER 19, 2023</div> <div>REVISIONS AS PER DEVELOPER'S COMMENTS OF OCTOBER 6, 2023</div> <div>REVISIONS AS PER ARCHITECT'S SITE PLAN ROOF SCUPPER LOCATIONS OF MARCH 1, 2024 AND REVIEW COMMENTS OF MARCH 4, 2024</div> <div>REVISIONS AS PER DEVELOPER'S COMMENTS OF FEBRUARY 5, 2024 AND ARCHITECT'S REVISED SITE PLAN OF FEBRUARY 23, 2024</div> <div>No. REVISION DATE BY No. REVISION DATE BY</div>										<div>02/02/24</div> <div>01/15/24</div> <div>10/26/23</div> <div>10/20/23</div> <div>10/16/23</div> <div>10/05/23</div> <div>09/14/23</div> <div>TLM</div> <div>TLM</div> <div>TLM</div> <div>TLM</div> <div>TLM</div> <div>TLM</div> <div>TLM</div>										<div>7</div> <div>6</div> <div>5</div> <div>4</div> <div>3</div> <div>2</div> <div>1</div> <div>03/05/24</div> <div>03/01/24</div> <div>TLM</div> <div>TLM</div> <div>TLM</div> <div>TLM</div> <div>TLM</div> <div>TLM</div> <div>TLM</div>										<div>ON JANUARY 30, 2024</div> <div>REVISIONS AS PER CITY'S REVIEW COMMENTS OF DECEMBER 15, 2023</div> <div>ISSUED FOR SITE PLAN APPLICATION</div> <div>REVISIONS AS PER ARCHITECT'S COMMENTS OF OCTOBER 19, 2023</div> <div>REVISIONS AS PER DEVELOPER'S COMMENTS OF OCTOBER 6, 2023</div> <div>REVISIONS AS PER ARCHITECT'S SITE PLAN ROOF SCUPPER LOCATIONS OF MARCH 1, 2024 AND REVIEW COMMENTS OF MARCH 4, 2024</div> <div>REVISIONS AS PER DEVELOPER'S COMMENTS OF FEBRUARY 5, 2024 AND ARCHITECT'S REVISED SITE PLAN OF FEBRUARY 23, 2024</div> <div>No. REVISION DATE BY No. REVISION DATE BY</div>										<div>02/02/24</div> <div>01/15/24</div> <div>10/26/23</div> <div>10/20/23</div> <div>10/16/23</div> <div>10/05/23</div> <div>09/14/23</div> <div>TLM</div> <div>TLM</div> <div>TLM</div> <div>TLM</div> <div>TLM</div> <div>TLM</div> <div>TLM</div>										<div>7</div> <div>6</div> <div>5</div> <div>4</div> <div>3</div> <div>2</div> <div>1</div> <div>03/05/24</div> <div>03/01/24</div> <div>TLM</div> <div>TLM</div> <div>TLM</div> <div>TLM</div> <div>TLM</div> <div>TLM</div> <div>TLM</div>										<div>ON JANUARY 30, 2024</div> <div>REVISIONS AS PER CITY'S REVIEW COMMENTS OF DECEMBER 15, 2023</div> <div>ISSUED FOR SITE PLAN APPLICATION</div> <div>REVISIONS AS PER ARCHITECT'S COMMENTS OF OCTOBER 19, 2023</div> <div>REVISIONS AS PER DEVELOPER'S COMMENTS OF OCTOBER 6, 2023</div> <div>REVISIONS AS PER ARCHITECT'S SITE PLAN ROOF SCUPPER LOCATIONS OF MARCH 1, 2024 AND REVIEW COMMENTS OF MARCH 4, 2024</div> <div>REVISIONS AS PER DEVELOPER'S COMMENTS OF FEBRUARY 5, 2024 AND ARCHITECT'S REVISED SITE PLAN OF FEBRUARY 23, 2024</div> <div>No. REVISION DATE BY No. REVISION DATE BY</div>										<div>02/02/24</div> <div>01/15/24</div> <div>10/26/23</div> <div>10/20/23</div> <div>10/16/23</div> <div>10/05/23</div> <div>09/14/23</div> <div>TLM</div> <div>TLM</div> <div>TLM</div> <div>TLM</div> <div>TLM</div> <div>TLM</div> <div>TLM</div>										<div>7</div> <div>6</div> <div>5</div> <div>4</div> <div>3</div> <div>2</div> <div>1</div> <div>03/05/24</div> <div>03/01/24</div> <div>TLM</div> <div>TLM</div> <div>TLM</div> <div>TLM</div> <div>TLM</div> <div>TLM</div> <div>TLM</div>										<div>ON JANUARY 30, 2024</div> <div>REVISIONS AS PER CITY'S REVIEW COMMENTS OF DECEMBER 15, 2023</div> <div>ISSUED FOR SITE PLAN APPLICATION</div> <div>REVISIONS AS PER ARCHITECT'S COMMENTS OF OCTOBER 19, 2023</div> <div>REVISIONS AS PER DEVELOPER'S COMMENTS OF OCTOBER 6, 2023</div> <div>REVISIONS AS PER ARCHITECT'S SITE PLAN ROOF SCUPPER LOCATIONS OF MARCH 1, 2024 AND REVIEW COMMENTS OF MARCH 4, 2024</div> <div>REVISIONS AS PER DEVELOPER'S COMMENTS OF FEBRUARY 5, 2024 AND ARCHITECT'S REVISED SITE PLAN OF FEBRUARY 23, 2024</div> <div>No. REVISION DATE BY No. REVISION DATE BY</div>										<div>02/02/24</div> <div>01/15/24</div> <div>10/26/23</div> <div>10/20/23</div> <div>10/16/23</div> <div>10/05/23</div> <div>09/14/23</div> <div>TLM</div> <div>TLM</div> <div>TLM</div> <div>TLM</div> <div>TLM</div> <div>TLM</div> <div>TLM</div>										<div>7</div> <div>6</div> <div>5</div> <div>4</div> <div>3</div> <div>2</div> <div>1</div> <div>03/05/24</div> <div>03/01/24</div> <div>TLM</div> <div>TLM</div> <div>TLM</div> <div>TLM</div> <div>TLM</div> <div>TLM</div> <div>TLM</div>										<div>ON JANUARY 30, 2024</div> <div>REVISIONS AS PER CITY'S REVIEW COMMENTS OF DECEMBER 15, 2023</div> <div>ISSUED FOR SITE PLAN APPLICATION</div> <div>REVISIONS AS PER ARCHITECT'S COMMENTS OF OCTOBER 19, 2023</div> <div>REVISIONS AS PER DEVELOPER'S COMMENTS OF OCTOBER 6, 2023</div> <div>REVISIONS AS PER ARCHITECT'S SITE PLAN ROOF SCUPPER LOCATIONS OF MARCH 1, 2024 AND REVIEW COMMENTS OF MARCH 4, 2024</div> <div>REVISIONS AS PER DEVELOPER'S COMMENTS OF FEBRUARY 5, 2024 AND ARCHITECT'S REVISED SITE PLAN OF FEBRUARY 23, 2024</div> <div>No. REVISION DATE BY No. REVISION DATE BY</div>										<div>02/02/24</div> <div>01/15/24</div> <div>10/26/23</div> <div>10/20/23</div> <div>10/16/23</div> <div>10/05/23</div> <div>09/14/23</div> <div>TLM</div> <div>TLM</div> <div>TLM</div> <div>TLM</div> <div>TLM</div> <div>TLM</div> <div>TLM</div>										<div>7</div> <div>6</div> <div>5</div> <div>4</div> <div>3</div> <div>2</div> <div>1</div> <div>03/05/24</div> <div>03/01/24</div> <div>TLM</div> <div>TLM</div> <div>TLM</div> <div>TLM</div> <div>TLM</div> <div>TLM</div> <div>TLM</div>										<div>ON JANUARY 30, 2024</div> <div>REVISIONS AS PER CITY'S REVIEW COMMENTS OF DECEMBER 15, 2023</div> <div>ISSUED FOR SITE PLAN APPLICATION</div> <div>REVISIONS AS PER ARCHITECT'S COMMENTS OF OCTOBER 19, 2023</div> <div>REVISIONS AS PER DEVELOPER'S COMMENTS OF OCTOBER 6, 2023</div> <div>REVISIONS AS PER ARCHITECT'S SITE PLAN ROOF SCUPPER LOCATIONS OF MARCH 1, 2024 AND REVIEW COMMENTS OF MARCH 4, 2024</div> <div>REVISIONS AS PER DEVELOPER'S COMMENTS OF FEBRUARY 5, 2024 AND ARCHITECT'S REVISED SITE PLAN OF FEBRUARY 23, 2024</div> <div>No. REVISION DATE BY No. REVISION DATE BY</div>										<div>02/02/24</div> <div>01/15/24</div> <div>10/26/23</div> <div>10/20/23</div> <div>10/16/23</div> <div>10/05/23</div> <div>09/14/23</div> <div>TLM</div> <div>TLM</div> <div>TLM</div> <div>TLM</div> <div>TLM</div> <div>TLM</div> <div>TLM</div>										<div>7</div> <div>6</div> <div>5</div> <div>4</div> <div>3</div> <div>2</div> <div>1</div> <div>03/05/24</div> <div>03/01/24</div> <div>TLM</div> <div>TLM</div> <div>TLM</div> <div>TLM</div> <div>TLM</div> <div>TLM</div> <div>TLM</div>										<div>ON JANUARY 30, 2024</div> <div>REVISIONS AS PER CITY'S REVIEW COMMENTS OF DECEMBER 15, 2023</div> <div>ISSUED FOR SITE PLAN APPLICATION</div> <div>REVISIONS AS PER ARCHITECT'S COMMENTS OF OCTOBER 19, 2023</div> <div>REVISIONS AS PER DEVELOPER'S COMMENTS OF OCTOBER 6, 2023</div> <div>REVISIONS AS PER ARCHITECT'S SITE PLAN ROOF SCUPPER LOCATIONS OF MARCH 1, 2024 AND REVIEW COMMENTS OF MARCH 4, 2024</div> <div>REVISIONS AS PER DEVELOPER'S COMMENTS OF FEBRUARY 5, 2024 AND ARCHITECT'S REVISED SITE PLAN OF FEBRUARY 23, 2024</div> <div>No. REVISION DATE BY No. REVISION DATE BY</div>										<div>02/02/24</div> <div>01/15/24</div> <div>10/26/23</div> <div>10/20/23</div> <div>10/1</div>									
--	--	--	--	--	--	--	--	--	--	--	--	--	--	--	--	--	--	--	--	---	--	--	--	--	--	--	--	--	--	--	--	--	--	--	--	--	--	--	--	--	--	--	--	--	--	--	--	--	--	---	--	--	--	--	--	--	--	--	--	--	--	--	--	--	--	--	--	--	--	--	--	--	--	--	--	--	--	--	--	---	--	--	--	--	--	--	--	--	--	--	--	--	--	--	--	--	--	--	--	--	--	--	--	--	--	--	--	--	--	---	--	--	--	--	--	--	--	--	--	--	--	--	--	--	--	--	--	--	--	--	--	--	--	--	--	--	--	--	--	---	--	--	--	--	--	--	--	--	--	--	--	--	--	--	--	--	--	--	--	--	--	--	--	--	--	--	--	--	--	---	--	--	--	--	--	--	--	--	--	--	--	--	--	--	--	--	--	--	--	--	--	--	--	--	--	--	--	--	--	---	--	--	--	--	--	--	--	--	--	--	--	--	--	--	--	--	--	--	--	--	--	--	--	--	--	--	--	--	--	---	--	--	--	--	--	--	--	--	--	--	--	--	--	--	--	--	--	--	--	--	--	--	--	--	--	--	--	--	--	---	--	--	--	--	--	--	--	--	--	--	--	--	--	--	--	--	--	--	--	--	--	--	--	--	--	--	--	--	--	---	--	--	--	--	--	--	--	--	--	--	--	--	--	--	--	--	--	--	--	--	--	--	--	--	--	--	--	--	--	---	--	--	--	--	--	--	--	--	--	--	--	--	--	--	--	--	--	--	--	--	--	--	--	--	--	--	--	--	--	---	--	--	--	--	--	--	--	--	--	--	--	--	--	--	--	--	--	--	--	--	--	--	--	--	--	--	--	--	--	---	--	--	--	--	--	--	--	--	--	--	--	--	--	--	--	--	--	--	--	--	--	--	--	--	--	--	--	--	--	---	--	--	--	--	--	--	--	--	--	--	--	--	--	--	--	--	--	--	--	--	--	--	--	--	--	--	--	--	--	---	--	--	--	--	--	--	--	--	--	--	--	--	--	--	--	--	--	--	--	--	--	--	--	--	--	--	--	--	--	---	--	--	--	--	--	--	--	--	--	--	--	--	--	--	--	--	--	--	--	--	--	--	--	--	--	--	--	--	--	---	--	--	--	--	--	--	--	--	--	--	--	--	--	--	--	--	--	--	--	--	--	--	--	--	--	--	--	--	--	---	--	--	--	--	--	--	--	--	--	--	--	--	--	--	--	--	--	--	--	--	--	--	--	--	--	--	--	--	--	---	--	--	--	--	--	--	--	--	--	--	--	--	--	--	--	--	--	--	--	--	--	--	--	--	--	--	--	--	--	---	--	--	--	--	--	--	--	--	--	--	--	--	--	--	--	--	--	--	--	--	--	--	--	--	--	--	--	--	--	---	--	--	--	--	--	--	--	--	--	--	--	--	--	--	--	--	--	--	--	--	--	--	--	--	--	--	--	--	--	---	--	--	--	--	--	--	--	--	--	--	--	--	--	--	--	--	--	--	--	--	--	--	--	--	--	--	--	--	--	---	--	--	--	--	--	--	--	--	--	--	--	--	--	--	--	--	--	--	--	--	--	--	--	--	--	--	--	--	--	---	--	--	--	--	--	--	--	--	--	--	--	--	--	--	--	--	--	--	--	---	--	--	--	--	--	--	--	--	--



- LEGEND**
- 100 YR HIGH WATER LEVEL
 - 5 YR HIGH WATER LEVEL
 - PROPOSED HIGH RIDGE LINE
 - RD#1 DENOTES PROPOSED ROOF DRAIN NUMBER AND LOCATION
 - SC PROPOSED ROOF SCUPPER LOCATION
 - PROPOSED GENERAL DIRECTION OF LOT GRADING AND SURFACE FLOW



NOTES

1. STORMWATER MANAGEMENT NOTES

ROOF DRAIN DETAILS

MODEL TYPE: WATTS MODEL "ADJUSTABLE ACCUTROL WEIR" (MODEL No. RD-100A-ADJ). (WEIR OPENING EXPOSED) TO PERMIT A RELEASE FLOW RATE OF 13.75 US GAL/MIN. OR 0.87 L/s UNDER A HEAD OF 120mm AND AT MAXIMUM FLOW RATE OF 15.0 US GAL/MIN. OR 0.95 L/s UNDER A HEAD OF LP TO 150mm.

NUMBER OF CONTROL DEVICES: 1 CONTROLLED ROOF DRAINS PER DESIGNATED ROOF AREA FOR SWM ATTENUATION

MAXIMUM FLOW PER ROOF DRAIN: 15.0 U.S. GAL/MIN. OR 0.95 L/s.

TOTAL FLOW FROM FLAT ROOFTOP OF BUILDING AT MAXIMUM HEAD OF 150mm PER DRAIN AT THE (6) PROPOSED DRAINS = 5.70 L/s

DEPTH AND VOLUME:

ROOF AREA ID & DRAINAGE AREA (ha)	NUMBER OF ROOF DRAINS	WATTS ROOF DRAIN MODEL ID (WEIR OPENING)	CONTROLLED FLOW PER DRAIN (L/s)		APPROXIMATE PONDING DEPTH ABOVE DRAINS (m)		STORAGE VOLUME REQUIRED (m³)		MAX. STORAGE AVAILABLE (m³)
			5 YR	100 YR	5 YR	100 YR	5 YR	100 YR	
No. 1 (0.0179 ha)	1	RD-100-A-ADJ (1/4 OPENING EXPOSED)	0.87	0.95	0.12	0.15	2.79	6.72	8.87
No. 2 (0.0174 ha)	1	RD-100-A-ADJ (1/4 OPENING EXPOSED)	0.87	0.95	0.12	0.15	2.69	6.46	8.53
No. 3 (0.0179 ha)	1	RD-100-A-ADJ (1/4 OPENING EXPOSED)	0.87	0.95	0.12	0.15	2.79	6.72	8.63
No. 4 (0.0265 ha)	1	RD-100-A-ADJ (1/4 OPENING EXPOSED)	0.87	0.95	0.12	0.15	4.95	11.47	13.11
No. 5 (0.0260 ha)	1	RD-100-A-ADJ (1/4 OPENING EXPOSED)	0.87	0.95	0.12	0.15	4.80	11.15	12.90
No. 6 (0.0265 ha)	1	RD-100-A-ADJ (1/4 OPENING EXPOSED)	0.87	0.95	0.12	0.15	4.95	11.47	13.12
TOTAL ROOF (0.132 ha)	6		5.22	5.70	-	-	22.97	53.99	65.16

- SCUPPER LOCATION: AS SHOWN ON THIS DRAWING
- 5 YEAR ELEVATION: 120mm ABOVE THE ROOF DRAIN FOR ROOF AREA #1, #2, #3, #4, #5 AND #6
- 100 YEAR ELEVATION: 150mm ABOVE THE ROOF DRAIN FOR ROOF AREA #1, #2, #3, #4, #5 AND #6
- EACH ROOF DRAIN SHALL BE SIZED FOR A (MAX) RELEASE RATE OF 15.0 U.S. GAL/MIN. OR 0.95 L/s. UNDER A HEAD OF 150mm. THE OWNER'S MECHANICAL ENGINEER SHALL SPECIFY THE REQUIRED ROOF DRAIN TYPE AND MODEL No. AND PROVIDE THE NECESSARY INFORMATION TO THE CITY OF OTTAWA FOR THEIR RECORDS TO ENSURE PROPER RELEASE RATE FOR STORMWATER COMPLIANCE.
- ROOF PITCH IS ASSUMED TO HAVE 1.30% (MIN.) SLOPE.
- ROOF SCUPPERS ARE RECOMMENDED TO BE INSTALLED 0mm ABOVE EDGE OF ROOFTOP ELEVATION FOR EMERGENCY OVERFLOW PURPOSES AT ROOF AREA #1, #2, #3, #4, #5 AND #6 AT PERIMETER OF BUILDING.
- SEE LATEST REVISED STORM DRAINAGE REPORT No. R-822-125 DATED MARCH 2024 FOR DETAILS ALSO.
2. PROPOSED ROOF DRAINS AND SCUPPER LOCATIONS SHOWN ON THIS PLAN SHALL BE REVIEWED BY THE OWNER AND OWNER'S BUILDING DESIGNER FOR APPROVAL.
3. THE OWNER'S BUILDING DESIGNER AND STRUCTURAL ENGINEER SHALL ENSURE THAT THE ADDITIONAL STORMWATER STORAGE VOLUME FROM STORMWATER MANAGEMENT MEASURES ARE ACCOUNTED FOR IN THE STRUCTURAL DESIGN OF AND WATERPROOFING OF ROOF AREA No. 1 to No. 6 INCLUSIVE AND ANY OF THE SUPPORTING STRUCTURES THAT MAY BE AFFECTED BY THE STORED WATER.
4. ROOF DRAIN #1, #2, #3, #4, #5 AND #6 INCLUSIVE SHALL OUTLET INTO THE DESIGNATED 150mmØ PVC STORMWATER PIPE AS SHOWN ON THE PROPOSED GRADING AND SERVICING PLAN (DWG No. 822-125, G-1).
5. SITE STORAGE VOLUME FROM PROPOSED UNDERGROUND DRAINAGE PIPES AND STRUCTURES:
- | EVENT | NON-ROOF AREA ESTIMATED HWL ON-SITE | CALCULATED MINIMUM VOLUME (m³) | AVAILABLE SITE STORAGE VOLUME (m³) |
|--------|-------------------------------------|--------------------------------|------------------------------------|
| 5 YR | 88.22m | 47.13 | 48.53 |
| 100 YR | 90.05m | 108.89 | 109.40 |
6. FOR GRADING AND SERVICING DETAILS OF THIS SITE, REFER TO DWG. No. 822-125, G-1.
7. ESTIMATED 5-YEAR HWL FOR THE SITE EXCLUDING THE ROOF TOP AREA = 88.22m AND THE 100-YEAR HWL = 90.05m ON-SITE (ALL CONFIRMED WITHIN PROPOSED UNDERGROUND DRAINAGE SYSTEM).

WATTS Adjustable Accutrol Weir

Adjustable Flow Control for Roof Drains

ADJUSTABLE ACCUTROL (for Large Sump Roof Drains only)

For more flexibility in controlling flow with heads deeper than 2", Watts Drainage offers the Adjustable Accutrol. The Adjustable Accutrol Weir is designed with a single parabolic opening that can be covered to restrict flow above 2" of head to less than 5 gpm per inch, up to 6" of head. To adjust the flow rate for depths over 2" of head, set the slot in the adjustable upper cone according to the flow rate required. Refer to Table 1 below.

Note: Flow rates are directly proportional to the amount of weir opening that is exposed.

EXAMPLE:

For example, if the adjustable upper cone is set to cover 1/2 of the weir opening, flow rates above 2" of head will be restricted to 2-1/2 gpm per inch of head.

Therefore, at 3" of head, the flow rate through the Accutrol Weir that has 1/2 the slot exposed will be: [5 gpm (per inch of head) x 2 inches of head] x 1/2 = 2-1/2 gpm (for the third inch of head) = 12-1/2 gpm.

1/2 Weir Opening Exposed Shown Above

TABLE 1. Adjustable Accutrol Flow Rate Settings

Weir Opening Exposed	1"	2"	3"	4"	5"	6"
1/4	5	10	15	20	25	30
1/2	5	10	15	20	25	30
3/4	5	10	15	20	25	30
Full	5	10	15	20	25	30

6	REVISIONS AS PER ARCHITECT'S SITE PLAN ROOF SCUPPER LOCATIONS OF MARCH 1, 2024 AND REVIEW COMMENTS OF MARCH 4, 2024	03/05/24	TLM
5	REVISIONS AS PER DEVELOPER'S COMMENTS OF FEBRUARY 5, 2024 AND ARCHITECT'S REVISED SITE PLAN OF FEBRUARY 23, 2024	03/01/24	TLM
4	ISSUED FOR SITE PLAN APPLICATION	10/26/23	TLM
3	REVISIONS AS PER DEVELOPER'S COMMENTS OF OCTOBER 6, 2023	10/16/23	TLM
2	ISSUED TO DEVELOPER'S AND CONSULTANTS' REVIEW	10/05/23	TLM
1	ISSUED FOR OWNER'S REVIEW	08/14/23	TLM
No.	REVISION	DATE	BY

SCALE

0 1.5 4.5 7.5m

1:150 HORIZONTAL

VERTICAL

DESIGN T.L.M.

CHECKED T.L.M.

DRAWN BY P.M.

CHECKED T.L.M.

APPROVED T.L.M.

PROJECT

96 BILL LEATHAM DRIVE
PART OF LOT 18
CONCESSION 1 (RIDEAU FRONT)
GEOGRAPHIC TOWNSHIP OF NEPEAN
CITY OF OTTAWA

DRAWING TITLE

PROPOSED SITE STORMWATER MANAGEMENT PLAN

PROJECT No. 822-125

DATE JUNE 2023

DRAWING No. SWM-1