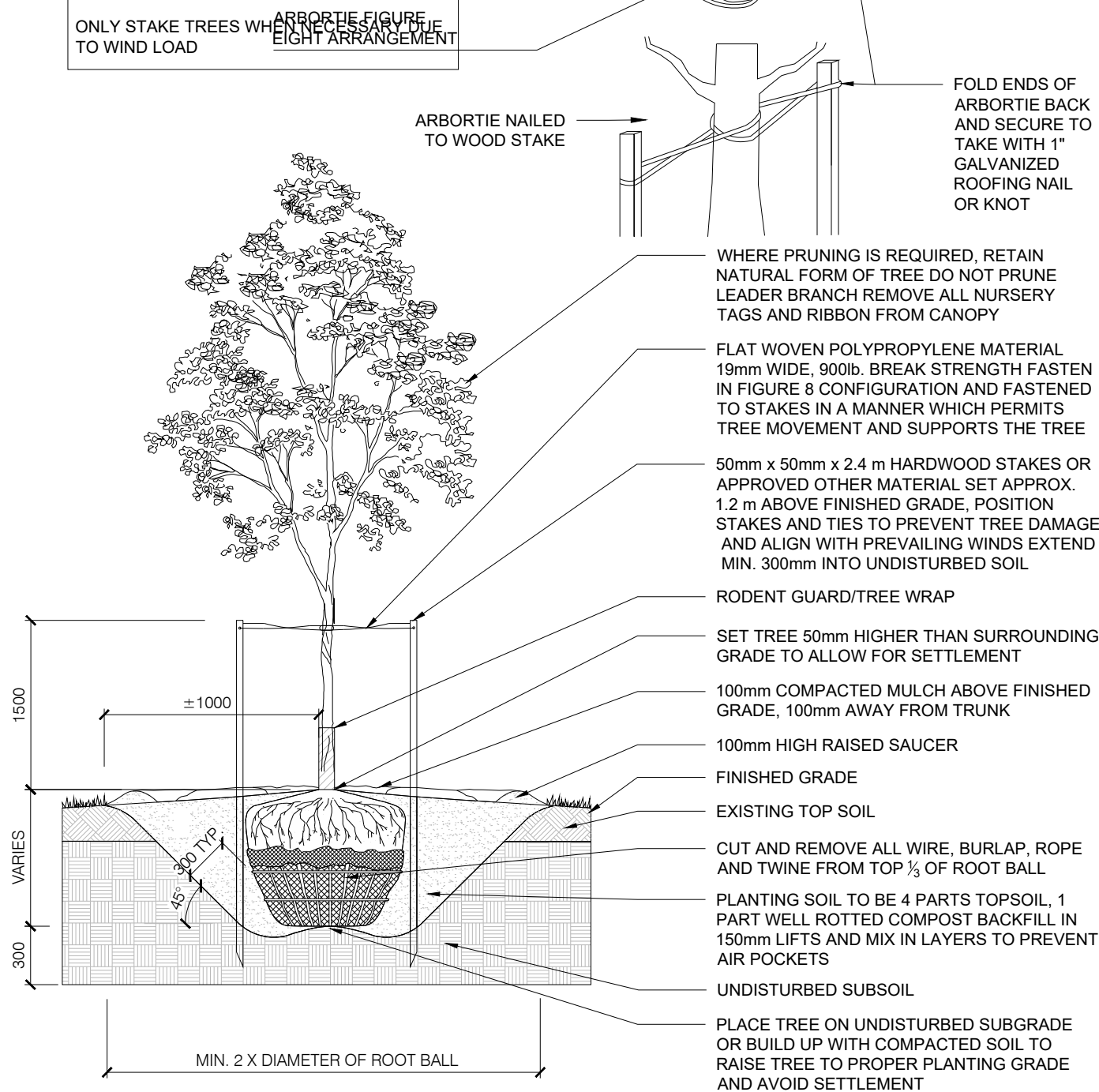


TREE STAKING SCHEDULE: ARBORTIE NAILED  
< 2500mm HT. - ONE STAKE TO WOOD STAKE  
> 2500mm HT. - TWO STAKES  
ONLY STAKE TREES WHEN NECESSARY DUE TO WIND LOAD



1 BALLED & BURLAPPED/WIRE BASKET DECIDUOUS  
LD1 N.T.S.

### Maine Adirondack Chair

HCSC-260 - Maine Adirondack Chair

The Maine Adirondack Chair is constructed of 100% recycled plastics, and is UV stabilized to prevent fading. This modern outdoor furniture is virtually maintenance free, and will not crack, split, rot or splinter. Available in a wide array of colour choices.

SUPPLIER: HAUSER OR APPROVED EQUIVALENT



Width: 31.5" (80.0 cm)  
Depth: 36.5" (92.7 cm)  
Height: 38.5" (97.7 cm)  
Seat Height: 14" (35.6 cm)  
Arm Height: 22" (55.9 cm)  
Weight: 45.0 lb (22.2 kg)



APPROVED

By Andrew McCreight at 9:28 am, Jul 10, 2025

5 MUSKOKA CHAIR  
LD1 N.T.S.



MODEL NO.	DESCRIPTION	SIZE W x L x H	WT. (LBS)	PRICE EACH
H-8520	34" Square Table	34 x 34 x 29"	43	\$393
H-8521	46" Square Table	46 x 46 x 29"	61	\$491

8 TABLE AND CHAIR - ULINE  
LD1 N.T.S.

9 PET WASTE RECEPTACLES - ULINE  
LD1 N.T.S.



SUPPLIER: ULINE  
TELEPHONE: (905) 864-7660  
WEBSITE: <https://www.uline.ca/>  
EMAIL: [customer.service@uline.ca](mailto:customer.service@uline.ca)

MODEL NO.	DESCRIPTION	SIZE L x W x H	WT. (LBS)	PRICE EACH
H-2897	Dispenser	9 x 3 x 16"	7	\$196 \$189

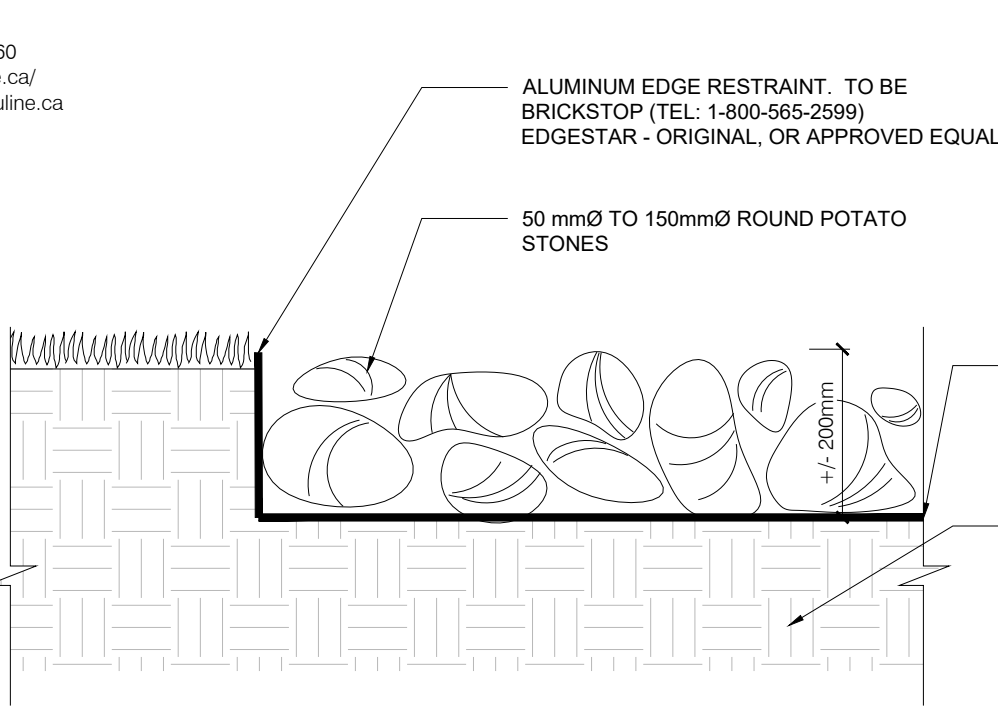


MODEL NO.	DESCRIPTION	SIZE	WT. (LBS)	PRICE EACH
H-3401	Receptacle	11.8" Diam. x 23" H	16	\$295 \$282



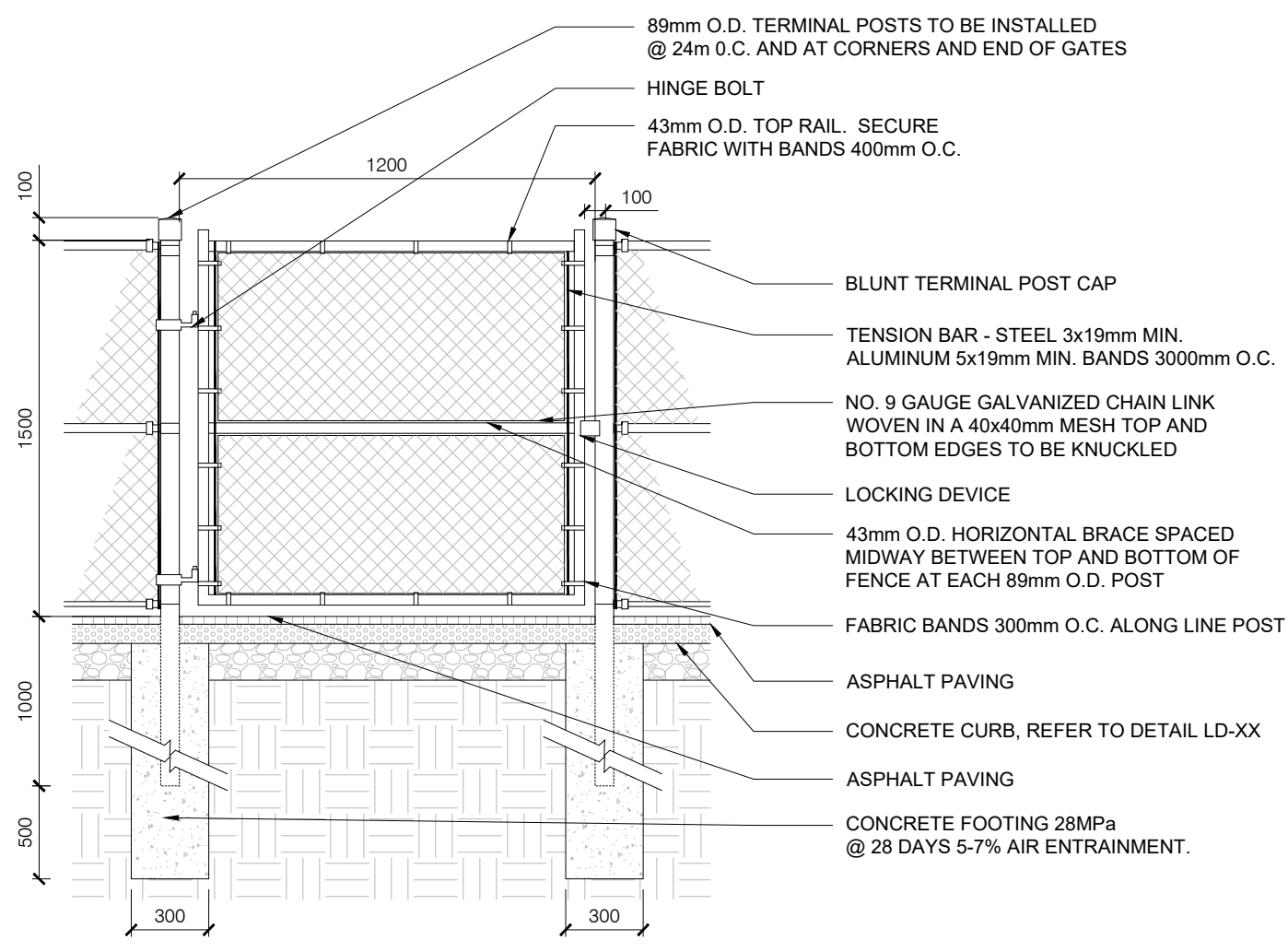
MODEL NO.	DESCRIPTION	SIZE W x H	WT. (LBS)	PRICE EACH
H-2898	Sign	12 x 18"	2	\$48 \$45

10 PET WASTE SIGNAGE - ULINE  
LD1 N.T.S.



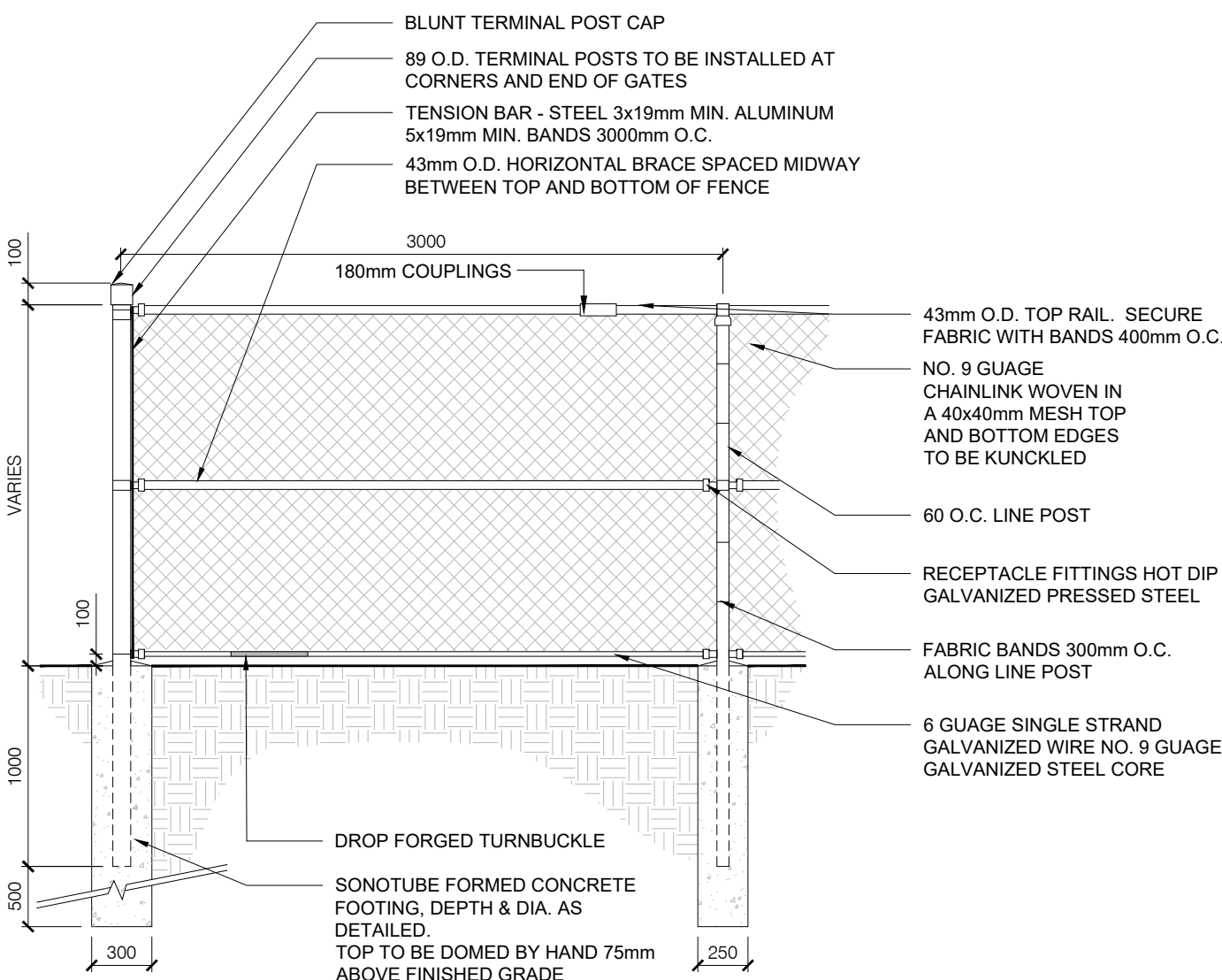
11 STONE MULCH  
LD1 N.T.S.

2 BALLED & BURLAPPED/WIRE BASKET CONIFEROUS TREE  
LD1 N.T.S.



6 CHAINLINK GATE  
LD1 N.T.S.

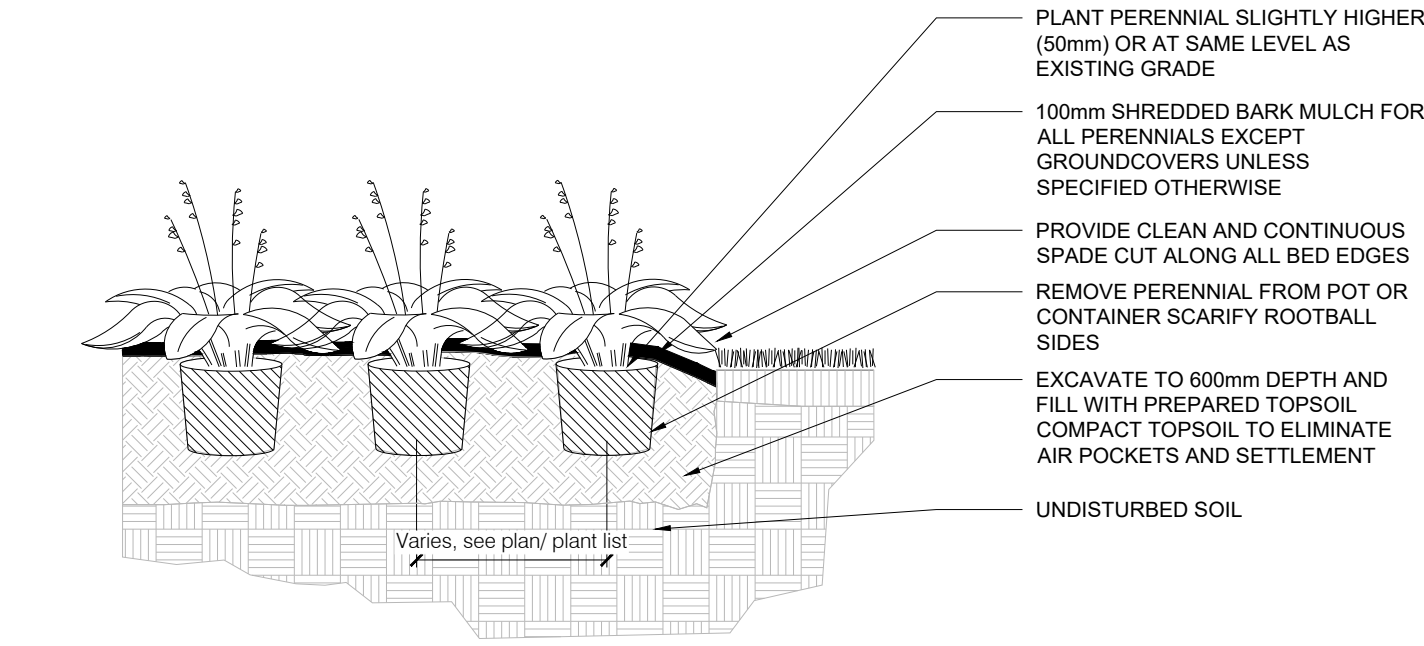
4 CONTAINER GROWN PERENNIAL/GRASS  
LD1 N.T.S.



7 CHAINLINK FENCE - FENCED DOG RUN  
LD1 N.T.S.

SUPPLIER: ULINE  
TELEPHONE: (905) 864-7660  
WEBSITE: <https://www.uline.ca/>  
EMAIL: [customer.service@uline.ca](mailto:customer.service@uline.ca)

3 BALLED AND BURLAPPED/POTTED SHRUB  
LD1 N.T.S.



### GENERAL NOTES

- Any ambiguity in the drawings, specifications or details are to be reported to the Landscape Architect for direction. These drawings shall not be used for construction unless stamped and signed by the Landscape Architect. The Contractor is not to proceed in uncertainty. The limits of work are to be clearly understood by the Contractor prior to any work taking place on the site.
- All dimensions are in meters unless otherwise noted. The drawings may be scaled for approximate layout. The Contractor is to verify all dimensions on the drawing(s) and report any discrepancies to the Landscape Architect.
- The Contractor is to locate and mark all infrastructure and utilities prior to any excavation work or planting on the site. Do not plant directly above underground utilities or infrastructure unless approved by the Landscape Architect. Dig all holes by hand when closer than 1.0m to any underground power, telephone or gas utility. The Contractor is responsible for the coordination and maintenance of all utility/infrastructure locates for the duration of the Contract.
- The Contractor shall supply all materials in quantities sufficient to complete work shown on these drawings. The Contractor is not to substitute materials, products or quantities without prior written consent of the Landscape Architect.
- The Contractor is to take all necessary precautions to protect all existing site features unless specified for removal/demolition. This includes all survey bars, stakes, monuments and sediment barriers. The Contractor is responsible for any damages incurred during construction and must make all necessary restorations and repairs to original or better condition.
- All existing trees, shrubs, and herbaceous plants beyond the limit of work are to be protected from construction damage. This includes but is not limited to: not storing construction materials or fuel within the dripline of an existing tree, not altering existing grades or compacting soil around protected vegetation and taking care not to disturb or expose the roots of any existing trees. The Contractor is responsible for all protection or hoarding measures of all existing trees and vegetation to be preserved within or adjacent to construction work limits.
- Contractor is responsible for the removal of all debris, garbage and surplus materials on site related to their contract or work and must keep the site in a clean, safe, useable condition at all times or as directed by the Contract Administrator.

### PLANTING NOTES

- The Contractor must notify the Landscape Architect prior to the commencement of any planting. The Contractor shall supply all plants and materials in quantities sufficient to complete the work shown on this drawing. Any discrepancies between quantities shall be reported to the Landscape Architect.
- All landscape works will be warrantied for a period of two years following inspection and written notice of start of warranty period as determined and provided by the Landscape Architect. Plant material, which is not in a healthy, vigorous growing condition at the end of the warranty period, shall be replaced to the satisfaction of the Landscape Architect / Owner.
- The Landscape Architect reserves the right to extend Contractor's warranty responsibilities for an additional year if, at the end of initial warranty period, leaf development and growth is not sufficient to ensure future survival as determined by the Landscape Architect.
- The Contractor is to identify with Landscape Architect/Owner any maintenance requirements necessary for warranty purposes.
- Plant materials specified for this project will conform to the Canadian Nursery Landscape Association (C.N.L.A.) for size, variety and condition as indicated on the plant schedule shown on these drawings. Any plant materials which do not conform will be promptly removed from the site and replaced by the Contractor at no additional cost to the project.
- The Landscape Architect is to be contacted for inspection and written approval prior to plant material arriving on site. The Landscape Architect reserved the right to reject any plant materials that have not been inspected and approved.
- The Landscape Architect reserves the right to refuse acceptance of any plant displaying poor growth habits, injury or disease. Any plant material that is rejected by the Landscape Architect will be promptly removed from the site and replaced with material of acceptable quality at no additional charge to the project.
- Plant materials collected from wild sources will not be accepted without written approval of the Landscape Architect. The Landscape Architect reserves the right to require that supplier invoices be submitted for inspection and approval prior to acceptance.
- On-site layout of the plant materials to be approved by the Landscape Architect prior to installation. Minor field adjustments to plant material locations may be necessary to respond to the locations of existing plants and site conditions. The Contractor to review with Landscape Architect where relocations are necessary. The Contractor must receive approval from Landscape Architect prior to installation.
- Plants are not to be installed during extreme heat, drought, or other undesirable conditions. Thoroughly water all plants immediately after installation. The Contractor shall regularly monitor site conditions and water as required to ensure healthy growth conditions throughout the duration of the warranty period.
- Do not plant directly in centerline of drainage swales or depression areas. Where proposed planting locations conflict with constructed swales or low-lying wet areas, contact Landscape Architect for direction.
- All plants are to be planted in accordance with the planting details shown on this drawing. All plants are to be installed vertical and plumb, regardless of ground slope.
- Supply and place topsoil in accordance with OPSS 802 to a minimum depth of 150mm in seed/sod areas and 600mm in planting beds unless otherwise specified. Each source of topsoil, imported or native to be approved by Landscape Architect prior to use. Submit topsoil analysis/test results to Landscape Architect prior to order or delivery to site. Testing to be in accordance with Contract specifications. Prepared topsoil shall be 4 parts topsoil to one part well-rotted compost.
- Mulch: to be spread uniformly around the base of trees and shrubs to a minimum depth of 100 mm. Do not place mulch in direct contact with trunk or stem(s). Allow a 100 mm mulch free zone at trunk/stems. Shrubs to be in continuously mulched planting beds unless otherwise specified.
- Supply and place seed in accordance with OPSS 804 unless otherwise specified. All 5:1 or greater slopes to be seeded with tackifier. All slopes greater than 3:1 shall be matted with an erosion control blanket. Supply and place sod in accordance with OPSS 803 unless otherwise specified.
- The Contractor is to remove dead or damaged branches on trees or shrubs. All pruning shall be performed in accordance with standard horticultural practices and appropriate timing for each species.
- All stakes and associated ties are to be removed after the first full growing season. Rodent guards are to be removed at the conclusion of the warranty period. If utilized, Gatorbags are to be removed for winter months.

## CLIENT ROHIT COMMUNITIES

550 91 STREET SW #101,  
EDMONTON, AB T6X0V1

### COPYRIGHT

This drawing has been prepared solely for the intended use, thus any reproduction or distribution for any purpose other than authorized by Arcadis is forbidden. Written dimensions shall have precedence over scaled dimensions. Contractors shall verify and be responsible for all dimensions and conditions on the job, and Arcadis shall be informed of any variations from the dimensions and conditions shown on the drawing. Shop drawings shall be submitted to Arcadis for general conformance before proceeding with fabrication.

Arcadis Professional Services (Canada) Inc.  
is a part of Arcadis

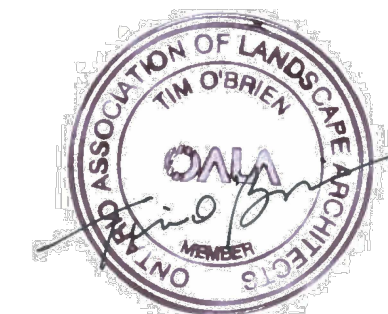
### ISSUES

No.	DESCRIPTION	DATE
1	ISSUED FOR SPA SUBMISSION	2024-03-15
2	ISSUED FOR SPA SUBMISSION	2024-04-24
3	ISSUED FOR SPA SUBMISSION	2024-05-08
4	ISSUED FOR SPA SUBMISSION	2024-05-31
5	ISSUED FOR SPA SUBMISSION	2025-02-11
6	ISSUED FOR SPA SUBMISSION	2025-03-26

CONSULTANTS  
CIVIL: ARCADIS PROFESSIONAL SERVICES (CANADA) INC.  
LANDSCAPE: ARCADIS PROFESSIONAL SERVICES (CANADA)  
SURVEY: ANNIS, O SULLIVAN, VOLLEBERG LTD  
ARCHITECTURE: NORR ARCHITECTS & ENGINEERING LTD.  
STRUCTURAL: CUNLIFE & ASSOCIATES  
MECHANICAL: GOODKEY, WEEDMARK & ASSOCIATES LTD.  
ELECTRICAL: GOODKEY, WEEDMARK & ASSOCIATES LTD.  
OWNER: ROHIT AT WATERIDGE 5 LTD.

04272- 1232 BLOCK 6, PLAN 4M1718

### SEAL



### PRIME CONSULTANT



410 Albert Street - Suite 101  
Waterloo ON N2L 3V3 Canada  
tel 519 585 2255  
[www.arcadis.com](http://www.arcadis.com)

### PROJECT

ROHIT WATERIDGE  
VILLAGE BLOCK 6

OTTAWA, ON

PROJECT NO:

144148

DRAWN BY:

R.S

PROJECT MGR:

M.P.

CHECKED BY:

M.P.

APPROVED BY:

T.O.

### SHEET TITLE

LANDSCAPE DETAILS

SHEET NUMBER

LD1

ISSUE

6