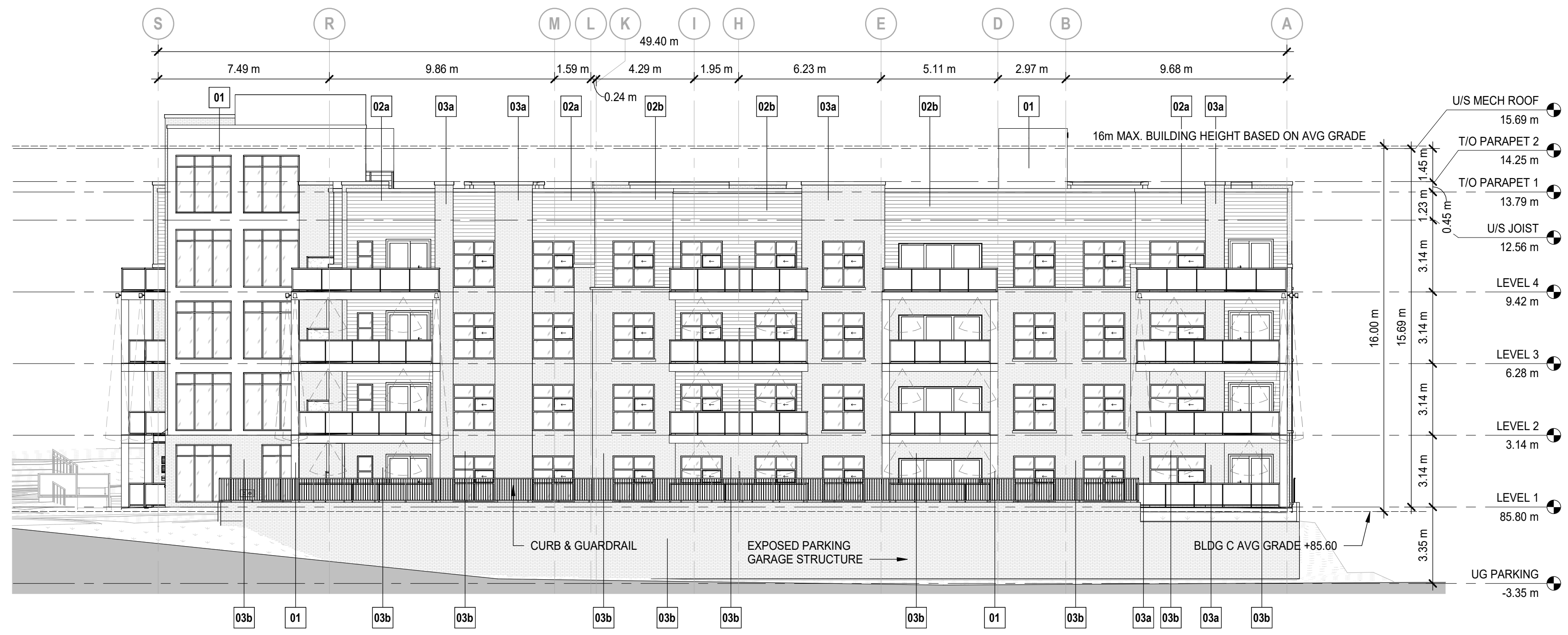
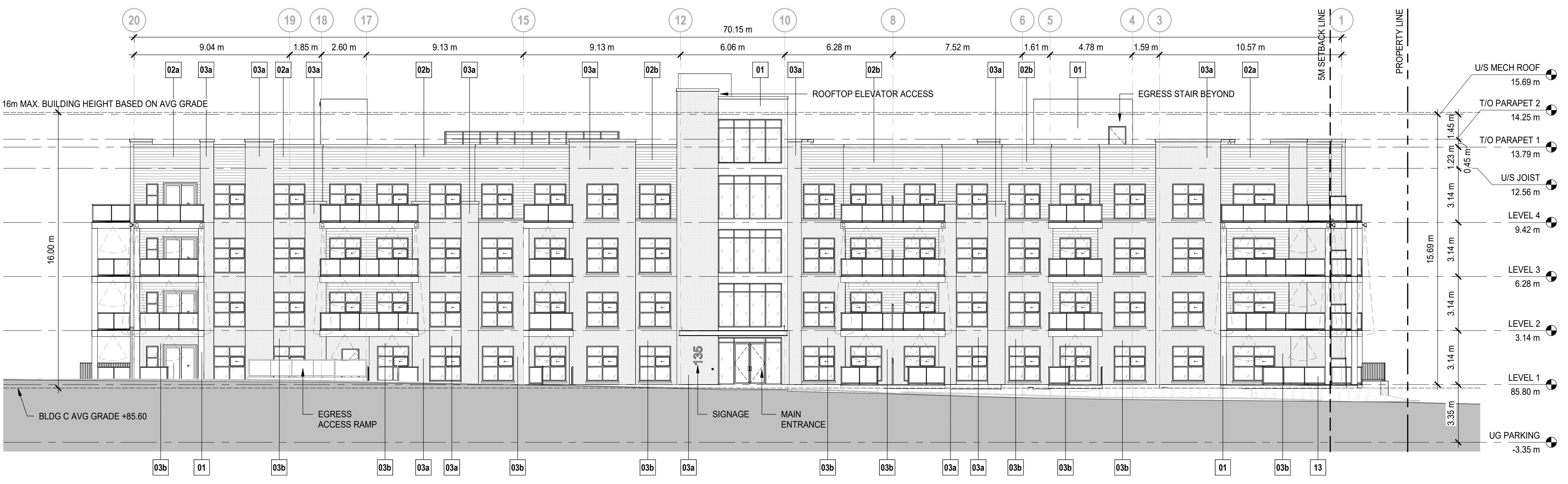


MATERIAL LEGEND	
01	FIBER CEMENT SIDING - SMOOTH COLOR: MIDNIGHT BLACK MANUFACTURER: TBD
02a	FIBER CEMENT SIDING - PLANK COLOR: MIDNIGHT BLACK MANUFACTURER: TBD
02b	FIBER CEMENT SIDING - PLANK COLOR: AGED PEWTER MANUFACTURER: TBD
03a	BRICK MASONRY COLOR: RED MANUFACTURER: TBD
03b	BRICK MASONRY COLOR: OBSIDIAN MANUFACTURER: TBD
04	WINDOW WALL ASSEMBLY COLOR: CLEAR GLASS MANUFACTURER: TBD
13	GLASS BALCONY RAILING COLOR: BLACK POWDER COATED ALUMINUM W/ GLASS INSERTS MANUFACTURER: TBD



2 NORTH ELEVATION - BUILDING C
DP30-02-01 SCALE: 1 : 150



1 EAST ELEVATION - BUILDING C
DP30-02-01 SCALE: 1 : 150

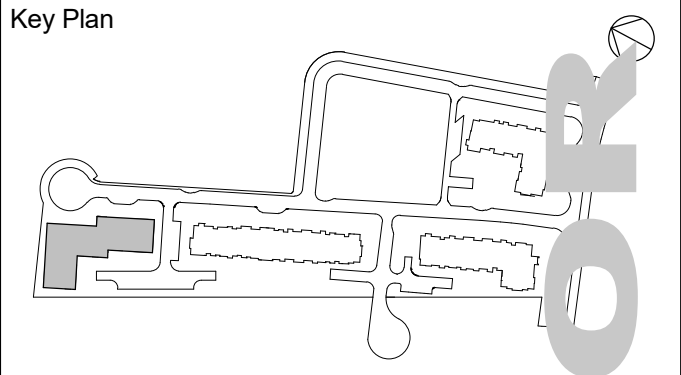
DATE	ISSUED FOR	REV
2024-09-30	SPA SUBMISSION	A



This drawing has been prepared solely for the use of ROHIT COMMUNITIES and there are no representations of any kind made by NORR Architects Engineers Planners to any party with whom NORR Architects Engineers Planners has not entered into a contract.

This drawing shall not be used for construction purposes until the seal appearing hereon is signed and dated by the Architect or Engineer.

Project Component
SITE PLAN CONTROL APPLICATION



Consultants
Civil: Arcadis Professional Services (Canada) Inc.
Landscape: Arcadis Professional Services (Canada) Inc.
Architecture: NORR Architects Engineers Planners
Structural: TBD
Mechanical: Goodkey, Weedmark & Associates Ltd.
Electrical: Goodkey, Weedmark & Associates Ltd.
Owner: Rohit at Wateridge & Ltd.



NORR
NORR Architects & Engineers Ltd.
55 Murray Street, Suite 600
Ottawa, ON, Canada K1N 5M3
norr.com

Project Manager M.EISELEN	Drawn O.BREYTENBACH
Project Leader O.BREYTENBACH	Checked E.FAULKNER

Client
ROHIT COMMUNITIES

550 91 ST SW #101, EDMONTON, AB, T6X 0V1

Project
Wateridge Village Block 6

125 & 135 OSHEDINAA STREET
OTTAWA, ON

Drawing Title
ELEVATIONS BUILDING C

Scale
As indicated

Project No.
NCCA22-0243

Drawing No.
DP30-02-01

PRELIMINARY - NOT FOR CONSTRUCTION