

APPROVED UNDER SECTION 51 OF THE PLANNING ACT BY THE CITY OF OTTAWA
THIS 28th DAY OF March 2023

Paul
DON HERMETER, NSIP REG.
ACTING GENERAL MANAGER
PLANNING, REAL ESTATE AND ECONOMIC
DEVELOPMENT DEPARTMENT
CITY OF OTTAWA

PLAN 4M-1718
I CERTIFY THAT THIS PLAN IS REGISTERED IN THE LAND REGISTRY OFFICE FOR THE LAND TITLES DIVISION OF OTTAWA-CARLETON NO. 4 AT 14:44 O'CLOCK ON THE 31st DAY OF March, 2023 AND ENTERED IN THE PARCEL REGISTER FOR PROPERTY IDENTIFIERS 04273-1205, 04273-1219 and 04273-1221 AND THE REQUIRED CONSENTS ARE REGISTERED AS PLAN DOCUMENT NO. 0C2586273
Joanne Hanson
LAND REGISTRAR

NOTES AND LEGEND

| | | |
|-------|---------|----------------------------------|
| -□- | denotes | Survey Monument Planted. |
| -■- | | Survey Monument Found |
| SIB | | Standard Iron Bar. |
| SSIB | | Short Standard Iron Bar. |
| IB | | Iron Bar. |
| (AOG) | | Annis, O'Sullivan, Vollebek Ltd. |
| (P1) | | Registered Plan 4M-1651 |
| (P2) | | Registered Plan 4M-1559 |
| (P3) | | Plan 4R-29367 |
| (P4) | | Plan 4R-35292 |
| HCM | | Horizontal Control Monument |

This plan comprises part of PIN 04273-1205 and all of PINs 04273-1219 and 04273-1221.
PART OF BLOCKS 1 TO 8 (both inclusive), PART OF RUE OSHEDINAA STREET, PART OF RUE WINISK STREET AND PART OF CHEMIN CODD'S ROAD ARE SUBJECT TO EASEMENT INST. OC1773382
BLOCKS 6 TO 8 (both inclusive), PART OF BLOCKS 1 TO 5 (both inclusive), PART OF RUE WINISK STREET, PART OF RUE OSHEDINAA STREET AND PART OF CHEMIN CODD'S ROAD ARE SUBJECT TO EASEMENT INST. S OC1759039 & OC2498617.
PART OF BLOCK 5 AND PART OF RUE OSHEDINAA STREET ARE SUBJECT TO EASEMENT INST. OC1772805
PART OF BLOCK 2 AND PART OF CHEMIN CODD'S ROAD ARE SUBJECT TO EASEMENT INST. OC2090069.
PART OF BLOCK 3 AND PART OF CHEMIN CODD'S ROAD ARE SUBJECT TO EASEMENT INST. OC1874459.

PLAN OF SUBDIVISION
PART OF LOTS 23 AND 24
CONCESSION 1 (OTTAWA FRONT)
Geographic Township of Gloucester
and
PART OF RESERVE BLOCK 14
REGISTERED PLAN 4M-1651
and
PART OF RESERVE BLOCK 117
REGISTERED PLAN 4M-1559
CITY OF OTTAWA
Surveyed by Annis, O'Sullivan, Vollebek Ltd.

Scale 1 : 750
Metric
DISTANCES AND COORDINATES SHOWN ON THIS PLAN ARE IN METRES AND CAN BE CONVERTED TO FEET BY DIVIDING BY 0.3048.

Surveyor's Certificate
I CERTIFY THAT:
1. This survey and plan are correct and in accordance with the Surveys Act, the Surveyors Act and the Land Titles Act and the regulations made under them.
2. The survey was completed on the 30th day of January, 2023.

March 23, 2023 *A. J. Broxham*
Date Andrew J Broxham
Ontario Land Surveyor

This plan of survey relates to A025 Plan Submission Form Number V-45070

OWNER'S CERTIFICATE
THIS IS TO CERTIFY THAT:
1. Blocks 1 to 8, both inclusive, the Streets, namely, rue Oshedinna Street, chemin Codd's Road and rue Winisk Street have been laid out in accordance with our instructions.
2. The Streets are dedicated to City of Ottawa as public highways.

Dated the 28th day of MARCH 2023
Tara Dinsmore
Tara Dinsmore, Vice President,
Real Estate (National Capital Region,
Atlantic and Acquisitions)
Canada Lands Company CLC Limited
I have authority to bind the corporation.
Dated the 23rd day of MARCH 2023
Mary Janis
Mary Janis, Senior Director,
Real Estate (National Capital Region,
Atlantic and Acquisitions)
Canada Lands Company CLC Limited
I have authority to bind the corporation.

All found survey monuments are (AOG), unless otherwise noted. Distances shown on curved limits are Arc distances unless otherwise noted.

Bearings are grid, derived from Specified Control Points 019198434761 and 01919880146 having a resultant bearing of N 1°28'55" E and are referred to the Central Meridian of MTM Zone 9 (78°30' West Longitude) NAD-83 (original).

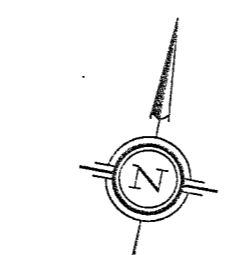
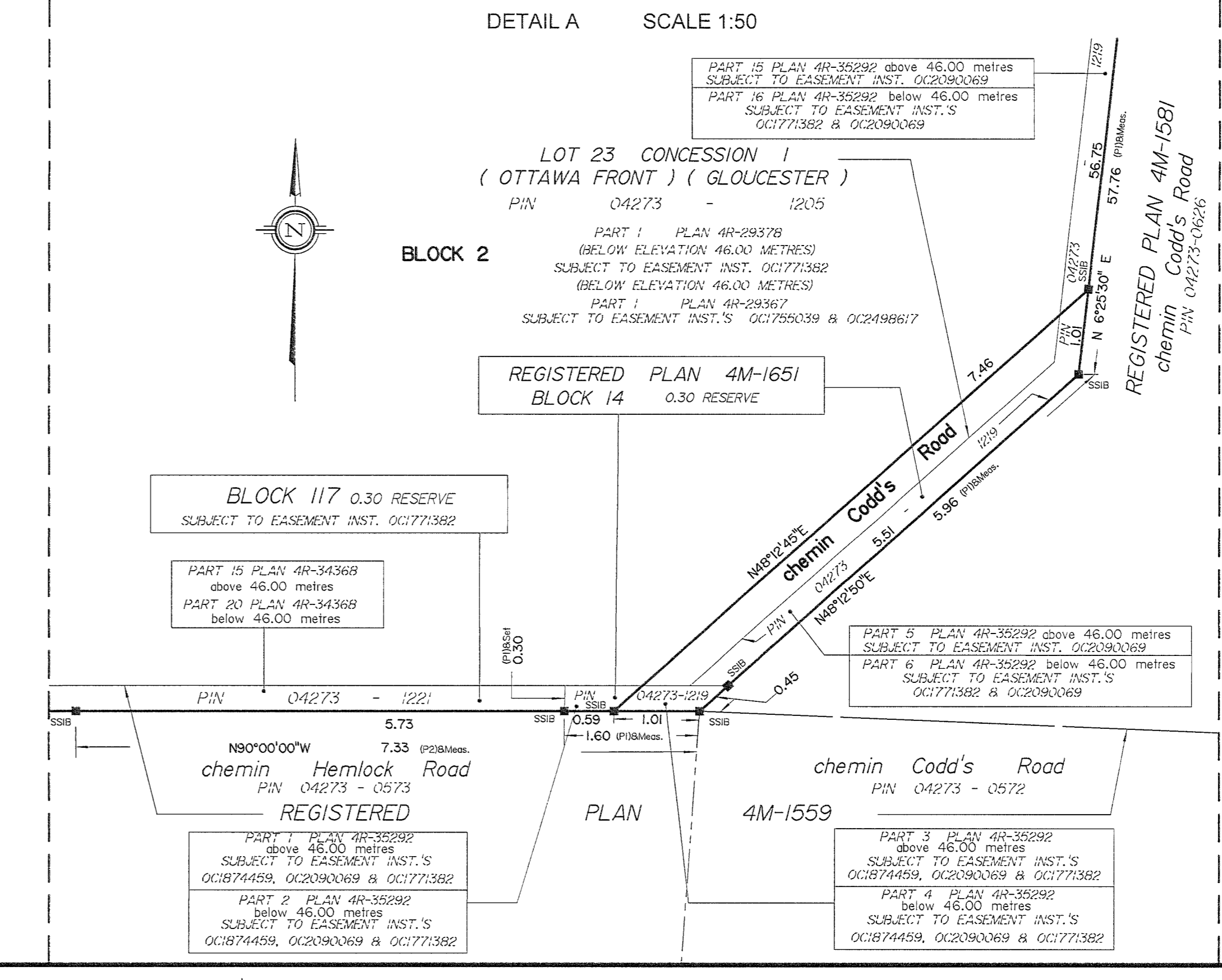
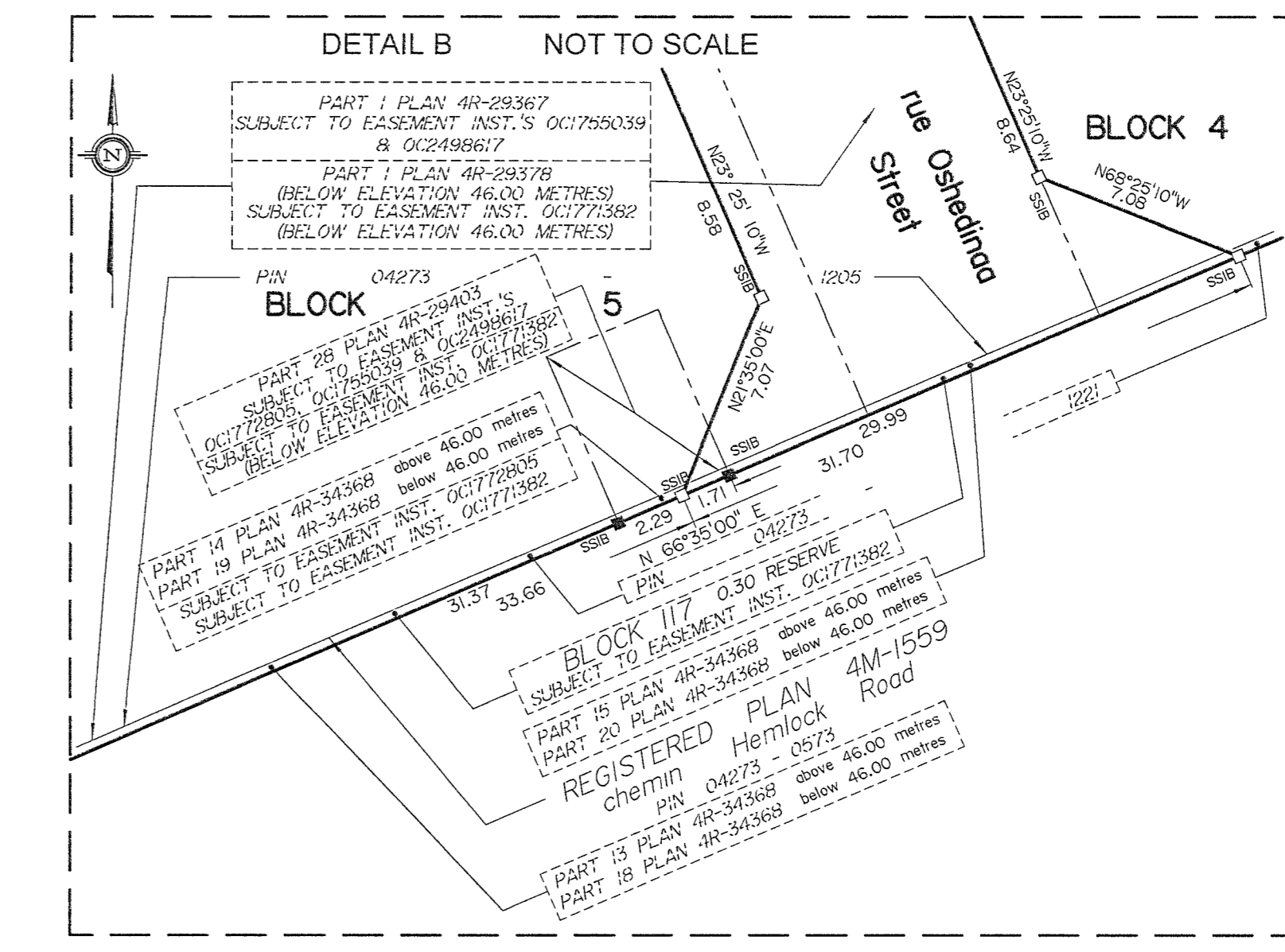
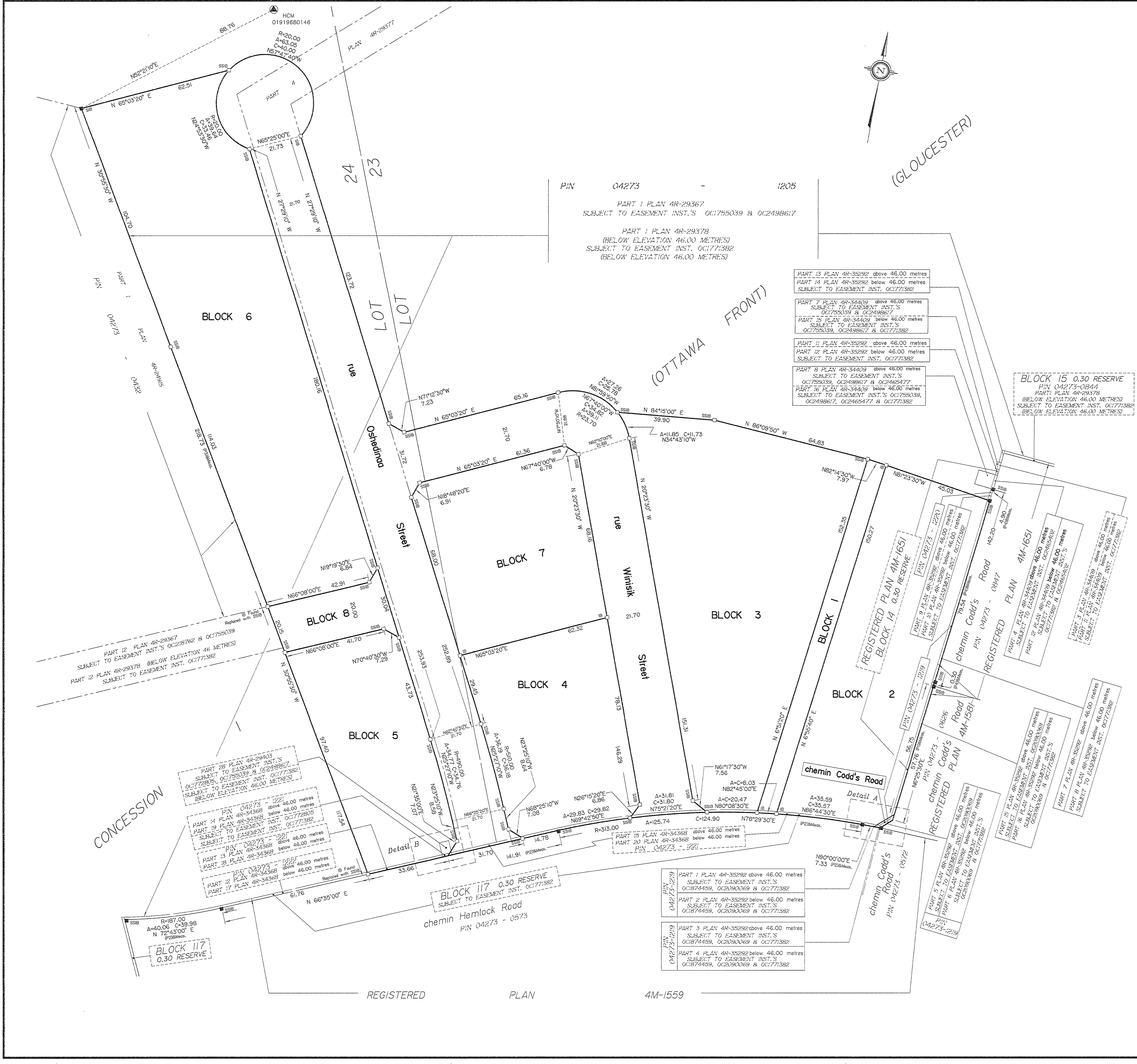
Coordinates are referred to the Central Meridian of MTM Zone 9 (78°30' West Longitude) NAD-83 (original).

Coordinate values are to urban accuracy in accordance with O. Reg. 216/10.

019198434761 Northing 5036178.12 Easting 372436.11
01919880146 Northing 5035456.42 Easting 372208.81

Caution: Coordinates cannot, in themselves, be used to re-establish corners or boundaries shown on this plan.

ANNIS, O'SULLIVAN, VOLLEBEK LTD.
14 Concourse Gate, Suite 500
Nepean, Ont. K2E 7S6
Phone: (613) 727-0850 Fax: (613) 727-1079
Email: info@anniso.com
Ontario Land Surveyors (Reg. No. 2181-20 O.C.P. Lic. 22-24 O.C.F. G.S.B. P4 F. 1/N)



(GLOUCESTER)

(OTTAWA FRONT)

CONCESSION

REGISTERED PLAN 4M-1559