

CLIENT
ROHIT COMMUNITIES

550 91 STREET SW #101, EDMONTON, AB
T6X0V1

COPYRIGHT
This drawing has been prepared solely for the intended use, thus any reproduction or distribution for any purpose other than authorized by Arcadis is forbidden. Written dimensions shall have precedence over scaled dimensions. Contractors shall verify and be responsible for all dimensions and conditions on the job, and Arcadis shall be informed of any variations from the dimensions and conditions shown on the drawing. Shop drawings shall be submitted to Arcadis for general conformance before proceeding with fabrication.

Arcadis Professional Services (Canada) Inc.
is a part of Arcadis

ISSUES

No.	DESCRIPTION	DATE
1	ISSUED FOR SPA SUBMISSION	2024-03-15
2	ISSUED FOR SPA SUBMISSION	2024-04-24
3	ISSUED FOR SPA SUBMISSION	2024-05-08
4	ISSUED FOR SPA SUBMISSION	2024-05-31
5	ISSUED FOR SPA SUBMISSION	2024-11-15

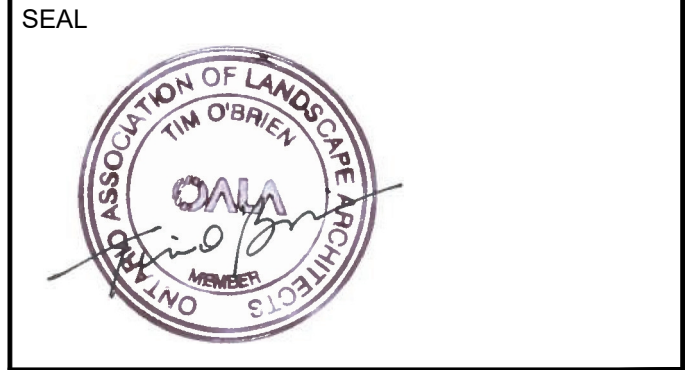
LEGEND

	TOPSOIL AND SOD AS SPECIFIED MINIMUM 150mm TOPSOIL DEPTH
	CONCRETE PAVING
	STONE MULCH
	WOOD CHIP MULCH
	PROPOSED TREES
	PROPOSED SHRUBS
	PROPOSED PERENNIALS
	PROPOSED ORNAMENTAL GRASSES
	PLANT SPECIES
	QUANTITY
	DETAIL NUMBER
	SHEET NUMBER
	SUBDIVISION TREES TO BE TRANSPLANTED
	NEW LOCATION OF TRANSPLANTED TREE

REFER TO TRANSPLANT NOTES AND TABLE ON THIS SHEET FOR MORE DETAILS.

CONSULTANTS
 CIVIL: ARCADIS PROFESSIONAL SERVICES (CANADA) INC.
 LANDSCAPE: ARCADIS PROFESSIONAL SERVICES (CANADA) INC.
 SURVEY: ANNIS, O'SULLIVAN, VOLLEBERG LTD.
 ARCHITECTURE: NORR ARCHITECTS & ENGINEERING LTD.
 STRUCTURAL: CUNLIFFE & ASSOCIATES
 MECHANICAL: GOODKEY, WEEDMARK & ASSOCIATES LTD.
 ELECTRICAL: GOODKEY, WEEDMARK & ASSOCIATES LTD.
 OWNER: ROHIT AT WATERIDGE S LTD.

04272- 1232 BLOCK 6, PLAN 4M1718



PRIME CONSULTANT
ARCADIS
 410 Albert Street - Suite 101
 Waterloo ON N2L 3V3 Canada
 tel 519 585 2255
 www.arcadis.com

PROJECT
**ROHIT WATERIDGE VILLAGE
 BLOCK 6**
 OTTAWA, ON

PROJECT NO:
144148

DRAWN BY: R.S	CHECKED BY: M.P.
PROJECT MGR: M.P.	APPROVED BY: T.O.

SHEET TITLE
LANDSCAPE SITE PLAN

SHEET NUMBER LP1	ISSUE 5
----------------------------	-------------------

LANDSCAPE NOTES:

- ALL WORK TO BE CARRIED OUT IN ACCORDANCE WITH BY-LAWS AND CODES HAVING JURISDICTION OVER SITE LOCATION.
- COMPLETE ALL WORK TO THE SATISFACTION OF THE LANDSCAPE ARCHITECT.
- REPORT ANY CHANGES, DISCREPANCIES OR SUBSTITUTIONS TO THE LANDSCAPE ARCHITECT FOR REVIEW. OBTAIN APPROVAL FROM THE LANDSCAPE ARCHITECT BEFORE PROCEEDING.
- IT IS THE CONTRACTOR'S RESPONSIBILITY TO DETERMINE EXISTING SERVICE LOCATIONS.
- EXACT LOCATIONS OF PLANT MATERIAL WILL BE DETERMINED BY PLACEMENT OF SITE SERVICES SUCH AS HYDRO VAULTS, METERS, UTILITIES ROOF RAIN WATER LEADERS, DRIVEWAYS, LIGHT STANDARDS, ETC.
- ALL PLANT MATERIAL LOCATIONS TO BE STAKED OR MARKED OUT AND APPROVED BY LANDSCAPE ARCHITECT PRIOR TO INSTALLATION.
- SUPPLY ALL PLANT MATERIAL IN ACCORDANCE WITH THE CANADIAN STANDARDS FOR NURSERY STOCK (BIS Ed.1).
- INSTALL PLANT MATERIAL ACCORDING TO DETAILS SHOWN.
- DISTURBED SOIL AREAS AROUND TREES AND SHRUBS ARE TO BE COVERED WITH SHREDDED CONIFER BARK MULCH SUCH AS 'CANADA RED' OR 'GRO-BARK' SPM MULCH, OR APPROVED EQUIVALENT. ALTERNATIVE MULCHES MUST BE APPROVED BY THE LANDSCAPE ARCHITECT.
- CONTRACTOR TO UTILIZE LAYOUT DIMENSIONS WHERE PROVIDED.
- PROVIDE PLANTING BED AREA AS NOTED ON THE DRAWING OR TO ACCOMMODATE MATURE SIZE OF PLANT MATERIAL.
- ALL SUPPORT SYSTEMS MUST BE REMOVED BY THE CONTRACTOR AT TIME OF FINAL ACCEPTANCE. NO EXTRAS WILL BE PAID TO COMPLETE THIS WORK.
- SUPPLY AND PLACE TOPSOIL IN ACCORDANCE WITH OPSS 570 TO A MINIMUM DEPTH OF 150mm UNLESS OTHERWISE SPECIFIED.
- SUPPLY AND PLACE SOD IN ACCORDANCE WITH OPSS 571 UNLESS OTHERWISE SPECIFIED.
- SUPPLY AND PLACE SEED IN ACCORDANCE WITH OPSS 572 UNLESS OTHERWISE SPECIFIED. ALL 5:1 OR GREATER SLOPES TO BE SEED WITH TACIFIER. CONTRACTOR TO PROVIDE NECESSARY EROSION CONTROL PROTECTION AS REQUIRED TO ENSURE SOIL STABILIZATION AND PROPER SEED GERMINATION.
- ALL DIMENSIONS IN METRES UNLESS OTHERWISE NOTED.
- IF DISCREPANCIES ARISE BETWEEN PLANT MATERIAL COUNT SHOWN ON DRAWING AND PLANT LIST, THE DRAWING SHALL BE CONSIDERED CORRECT.
- CONTRACTOR TO PROVIDE MINIMUM TWO (2) YEAR WARRANTY FROM DATE ACCEPTED ON ALL WORK UNLESS OTHERWISE SPECIFIED.
- ANY SITE PLAN OR GRADING AND SERVICING SHOWN IS FOR INFORMATION ONLY. REFER TO APPROVED DRAWINGS.
- NOT FOR CONSTRUCTION UNLESS STAMPED, SIGNED AND DATED BY LANDSCAPE ARCHITECT.
- DRAWINGS NOT TO BE REPRODUCED WITHOUT WRITTEN CONSENT FROM LANDSCAPE ARCHITECT.
- APPROVAL OF LANDSCAPE PLAN TO BE OBTAINED FROM MUNICIPALITY.
- FOR GRADING AND SERVICING INFORMATION REFER TO THE CONSULTING ENGINEERS DRAWINGS.
- FOR LIGHTING INFORMATION AND POWER DISTRIBUTION REFER TO THE ELECTRICAL CONSULTANT'S DRAWINGS.

LANDSCAPE PLANTING SCHEDULE:

KEY	QTY.	BOTANICAL NAME	COMMON NAME	CALIPER (mm)	SIZE (cm)	CONDITION/ FORM	MIN. O.C. SPACING (m)	OWNERSHIP	NATIVE (YES/NO)
TREES									
AJ	8	<i>Acer x freemanii 'Jeffersred'</i>	Autumn Blaze Maple	50		W.B.	As Shown	Private	No
ArA	3	<i>Acer rubrum 'Armstrong'</i>	Armstrong Maple	50		W.B.	As Shown	Private	No
AS	10	<i>Amelanchier laevis 'Spring Flurry'</i>	Spring Flurry Serviceberry	50		W.B.	As Shown	Private	No
ArP	16	<i>Amelanchier canadensis 'Glenn Form' syn. Rainbow Pillar</i>	Rainbow Pillar Serviceberry	200		W.B., Multistem	As Shown	Private	No
Cc	3	<i>Carpinus caroliniana</i>	Blue Beech	50		W.B.	As Shown	Private	Yes
GcP	8	<i>Ginkgo biloba 'Princeton Sentry'</i>	Princeton Sentry Maidentree	50		W.B.	As Shown	Private	No
GKS	2	<i>Gleditsia triacanthos f. inermis 'Skycole'</i>	Skyline Honeylocust	50		W.B.	As Shown	Private	No
LIF	13	<i>Liriodendron tulipifera 'Fastigata'</i>	Columnar Tulip Tree	50		W.B.	As Shown	Private	No
PaB	3	<i>Platanus x acerifolia 'Bloodgood'</i>	Bloodgood Plane Tree	50		W.B.	As Shown	Private	No
PoB	5	<i>Picea omorika 'Bruns'</i>	Bruns Serbian Spruce	150		W.B.	As Shown	Private	No
PpG	13	<i>Picea pungens var. glauca</i>	Colorado Blue Spruce	150		W.B.	As Shown	Private	No
Qr	5	<i>Quercus rubra</i>	Northern Red Oak	50		W.B.	As Shown	Private	Yes
Srl	5	<i>Syringa reticulata 'Ivory Silk'</i>	Ivory Silk Japanese Lilac Tree	50		W.B.	As Shown	Private	No
TOTAL: 94									
SHRUBS									
Cs	18	<i>Cornus sericea</i>	Red Osier Dogwood	60cm	3 Gal.	2	Private	Yes	
Cst	15	<i>Cornus stolonifera</i>	Arctic Fire Dogwood	60cm	4 Gal.	1	Private	Yes	
HaA	64	<i>Hydrangea aborescens 'Annabelle'</i>	Annabelle Hydrangea	60cm	3 Gal.	1	Private	No	
HdP	106	<i>Hydrangea paniculata 'Strawberry Sundae'</i>	Strawberry Sundae Hydrangea	60cm	3 Gal.	1	Private	No	
JmD	151	<i>Juniperus sabina 'Monard'</i>	Moor-dense Juniper	50cm	3 Gal.	1	Private	No	
RrA	13	<i>Rosa rugosa 'Alba'</i>	White Rugosa Rose	50cm	3 Gal.	1.5	Private	No	
Sc	9	<i>Sambucus canadensis</i>	Common Elderberry	60cm	3 Gal.	2	Private	Yes	
SbG	204	<i>Spiraea betulifolia 'Glow Girl'</i>	Glow Girl Birch Leaf Spiraea	40cm	3 Gal.	0.5	Private	No	
SjP	400	<i>Spiraea japonica 'Pineapple Fizz'</i>	Pineapple Fizz Spiraea	40cm	3 Gal.	0.5	Private	No	
SjW	176	<i>Spiraea japonica 'Walburna'</i>	Magic Carpet Spiraea	40cm	3 Gal.	0.5	Private	No	
St	53	<i>Spiraea tomentosa</i>	Steeplebush	40cm	3 Gal.	0.5	Private	Yes	
SmP	34	<i>Syringa meyeri 'Palibin'</i>	Dwarf Korean Lilac	60cm	3 Gal.	1.5	Private	No	
TrH	104	<i>Taxus cuspidata 'nana'</i>	Dwarf Japanese Yew	60cm	3 Gal.	1	Private	No	
ToE	45	<i>Thuja occidentalis 'Emerald'</i>	Emerald Cedar	175 cm	10 Gal.	1.5	Private	No	
WIN	99	<i>Weigela florida 'Nana Variegata'</i>	Dwarf Variegated Weigela	50cm	3 Gal.	1	Private	No	
WV	260	<i>Weigela florida 'Veilheilig'</i>	My Monet Weigela	50cm	3 Gal.	1	Private	No	
TOTAL: 1751									
PERENNIALS & GRASSES									
AaF	80	<i>Astilbe arendsii 'Fanal'</i>	Astilbe Fanal		1 Gal.	0.5	Private	No	
AcV	166	<i>Astilbe chinensis 'Vision in White'</i>	Chinese Astilbe		1 Gal.	0.5	Private	No	
CaK	173	<i>Calamagrostis acutiflora 'Karl Foerster'</i>	Karl Foerster Feather Reed Grass		1 Gal.	0.5	Private	No	
FgE	780	<i>Festuca glauca 'Elijah Blue'</i>	Blue Fescue		1 Gal.	0.5	Private	No	
Ha	195	<i>Hosta 'Anne'</i>	Hosta		1 Gal.	0.5	Private	No	
Hp	247	<i>Hosta 'Patriot'</i>	Hosta		1 Gal.	0.5	Private	No	
HbS	146	<i>Heuchera X 'Berry Smoothie'</i>	Berry Smoothie Cora Bell		1 Gal.	0.5	Private	No	
HcF	430	<i>Heuchera X 'Cajun Fire'</i>	Cajun Fire Cora Bell		1 Gal.	0.5	Private	No	
Hg	395	<i>Heuchera X 'Guacamole'</i>	Guacamole Cora Bell		1 Gal.	0.5	Private	No	
Hs	129	<i>Hemerocallis 'Steffa de Oro'</i>	Stella de Oro Daylily		1 Gal.	0.5	Private	No	
MeP	319	<i>Miscanthus sinensis 'Purpurascens'</i>	Flame Grass		1 Gal.	0.5	Private	No	
TOTAL: 3060									

TRANSPLANT NOTES:

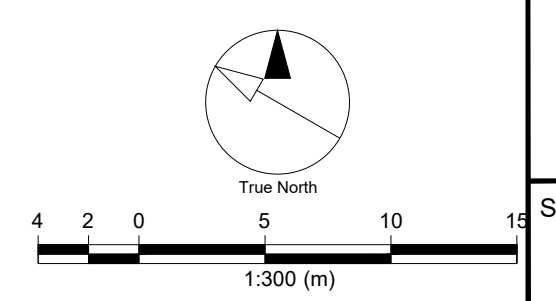
THE OWNER ACKNOWLEDGES AND AGREES TO TRANSPLANT 6 TREES FROM THE CITY OF OTTAWA RIGHT OF WAY, IN ADVANCE OF CONSTRUCTION TO A PROTECTED AREA OF THE PROPERTY TO COMPLETE SITE CONSTRUCTION. UPON COMPLETION OF CONSTRUCTION, THE TREES WILL BE TRANSPLANTED TO THEIR FINAL PLANTING LOCATION. IF ANY OF THE TREES DECLINE OR DIE WITHIN 2 YEARS OF THE FINAL PLANTING DATE, AS SHOWN IN THE LANDSCAPE PLAN PREPARED BY ARCADIS, DATED AUGUST 2024 COMPENSATION IN THE FORM OF 1:1 REPLACEMENT TREE PLANTING WILL BE REQUIRED. IF DECLINE OR DEATH OCCURS, THE OWNER SHALL PREPARE AND SUBMIT AN AMENDED LANDSCAPE PLAN PREPARED TO THE SATISFACTION OF THE DEVELOPMENT REVIEW MANAGER OF THE RELEVANT BRANCH WITHIN THE PLANNING, REAL ESTATE AND ECONOMIC DEVELOPMENT DEPARTMENT, OR HIS/HER DESIGNATE, SHOWING THE LOCATION, STOCK SIZE, AND SPECIES OF TREE BEING PLANTED AS A REPLACEMENT(S).

KEY	QTY.	BOTANICAL NAME	COMMON NAME
TRANSPLANTED TREES			
1	1	<i>Catalpa speciosa</i>	Northern Catalpa
2	1	<i>Ulmus japonica x pumila 'New Horizon'</i>	New Horizon Elm
3	1	<i>Quercus ellipsoidalis</i>	Northern Pin Oak
4	1	<i>Gleditsia triacanthos 'Draves'</i>	Street Keeper Honeylocust

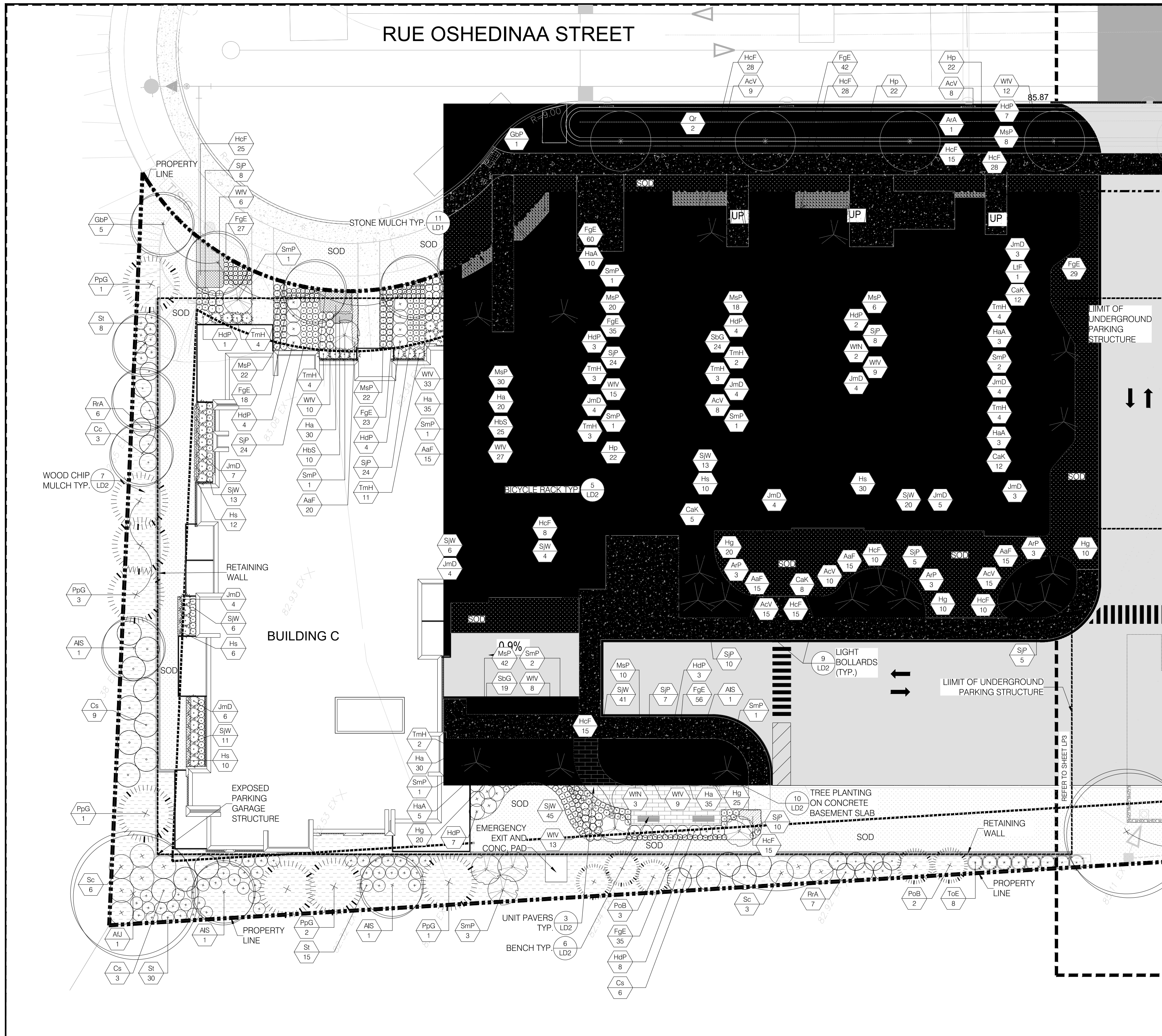
LANDSCAPE AREA STATISTICS:

SITE AREA - 11636.72 m²

HARDSCAPE (8.9% OF SITE AREA)	
CONCRETE	850 m ²
UNIT PAVER	170 m ²
PEAGRAVEL	26 m ²
TOTAL	1046 m²
SOFTSCAPE (37.8% OF SITE AREA)	
PLANT BEDS (INCLUDING MULCH BEDS)	2103 m ²
SOD	2306 m ²
TOTAL	4409 m²



File Location: I:\Ottawa\144148_Block_6_Ph1_LP_0_Production\03_Design\005_Landscape\Sheet\144148_LP_Avg_Last Saved: November 15, 2024 12:21:52 PM by Sherry Kotachary, Roshita Plotter: November 15, 2024 12:21:52 PM by Sherry Kotachary, Roshita
 SCALE CHECK: 1/16



CLIENT
ROHIT COMMUNITIES

550 91 STREET SW #101, EDMONTON, AB
T6X0V1

COPYRIGHT
This drawing has been prepared solely for the intended use, thus any reproduction or distribution for any purpose other than authorized by Arcadis is forbidden. Written dimensions shall have precedence over scaled dimensions. Contractors shall verify and be responsible for all dimensions and conditions on the job, and Arcadis shall be informed of any variations from the dimensions and conditions shown on the drawing. Shop drawings shall be submitted to Arcadis for general conformance before proceeding with fabrication.

Arcadis Professional Services (Canada) Inc.
is a part of Arcadis

ISSUES

No.	DESCRIPTION	DATE
1	ISSUED FOR SPA SUBMISSION	2024-03-15
2	ISSUED FOR SPA SUBMISSION	2024-04-24
3	ISSUED FOR SPA SUBMISSION	2024-05-08
4	ISSUED FOR SPA SUBMISSION	2024-05-31
5	ISSUED FOR SPA SUBMISSION	2024-11-15

LEGEND

	TOPSOIL AND SOD AS SPECIFIED
	MINIMUM 150mm TOPSOIL DEPTH
	CONCRETE PAVING
	STONE MULCH
	WOOD CHIP MULCH
	PROPOSED TREES
	PROPOSED SHRUBS
	PROPOSED PERENNIALS
	PROPOSED ORNAMENTAL GRASSES
	PLANT SPECIES
	QUANTITY
	DETAIL NUMBER
	SHEET NUMBER
	SUBDIVISION TREES TO BE TRANSPLANTED
	NEW LOCATION OF TRANSPLANTED TREE

PREFER TO TRANSPLANT NOTES AND TABLE ON THIS SHEET FOR MORE DETAILS

CONSULTANTS
 CIVIL: ARCADIS PROFESSIONAL SERVICES (CANADA) INC.
 LANDSCAPE: ARCADIS PROFESSIONAL SERVICES (CANADA) SURVEY, ANNIS, O'SULLIVAN, VOLLEBERG LTD.
 ARCHITECTURE: NORR ARCHITECTS & ENGINEERING LTD.
 STRUCTURAL: CUNLIFFE & ASSOCIATES
 MECHANICAL: GOODKEY, WEEDMARK & ASSOCIATES LTD.
 ELECTRICAL: GOODKEY, WEEDMARK & ASSOCIATES LTD.
 OWNER: ROHIT AT WATERIDGE S LTD.

04272- 1232 BLOCK 6, PLAN 4M1718



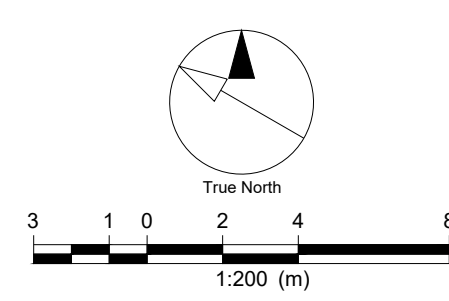
ARCADIS
 410 Albert Street - Suite 101
 Waterloo ON N2L 3V3 Canada
 tel 519 585 2255
 www.arcadis.com

PROJECT
**ROHIT WATERIDGE VILLAGE
BLOCK 6**
OTTAWA, ON

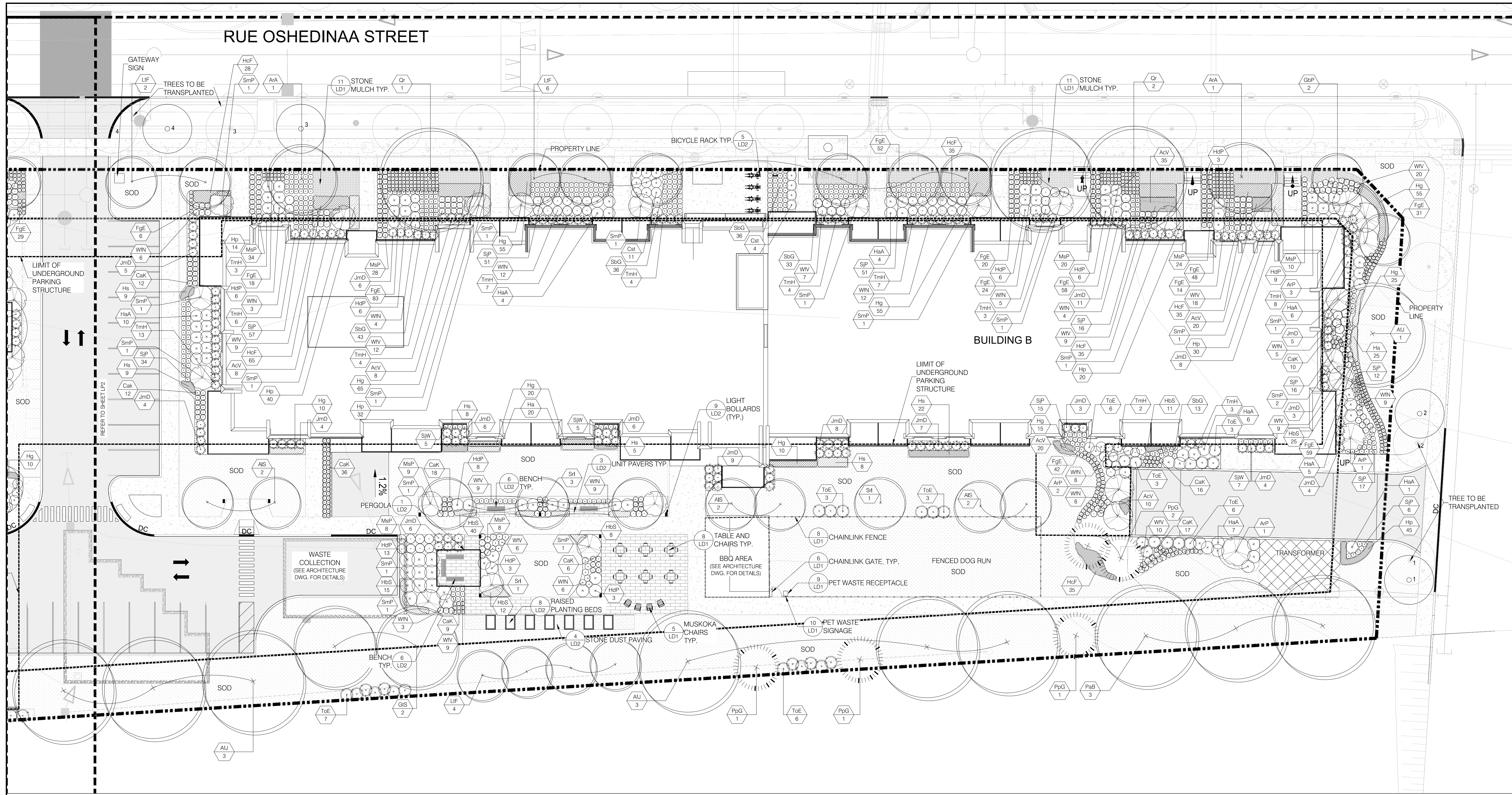
PROJECT NO:
144148
 DRAWN BY: **R.S** CHECKED BY: **M.P.**
 PROJECT MGR: **M.P.** APPROVED BY: **T.O.**

SHEET TITLE
LANDSCAPE PLAN BUILDING C

SHEET NUMBER **LP2** ISSUE **5**



File Location: J:\Ottawa\144148_Block_6_Ph1_Y0_Production\7.03_Design\05_Landscape\Sheet\144148_Block_6_Ph1_Y0_Production\7.03_Design\05_Landscape\Sheet\144148_LP.dwg Last Saved: November 15, 2024 12:22:18 PM by Sherry Kotachery, Roshita



CLIENT
ROHIT COMMUNITIES
 550 91 STREET SW #101, EDMONTON, AB
 T6X0V1

COPYRIGHT
 This drawing has been prepared solely for the intended use, thus any reproduction or distribution for any purpose other than authorized by Arcadis is forbidden. Written dimensions shall have precedence over scaled dimensions. Contractors shall verify and be responsible for all dimensions and conditions on the job, and Arcadis shall be informed of any variations from the dimensions and conditions shown on the drawing. Shop drawings shall be submitted to Arcadis for general conformance before proceeding with fabrication.

Arcadis Professional Services (Canada) Inc.
 is a part of Arcadis

ISSUES

No.	DESCRIPTION	DATE
1	ISSUED FOR SPA SUBMISSION	2024-03-15
2	ISSUED FOR SPA SUBMISSION	2024-04-24
3	ISSUED FOR SPA SUBMISSION	2024-05-08
4	ISSUED FOR SPA SUBMISSION	2024-05-31
5	ISSUED FOR SPA SUBMISSION	2024-11-15

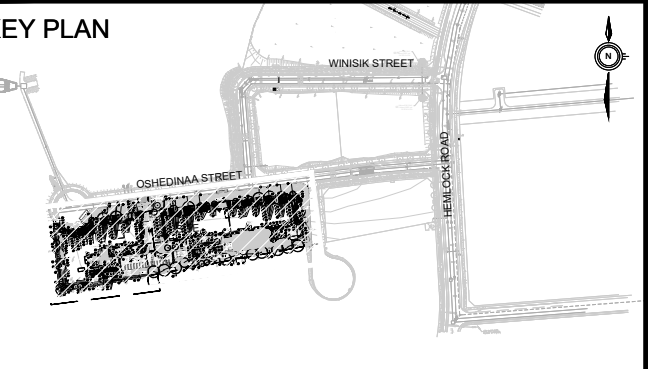
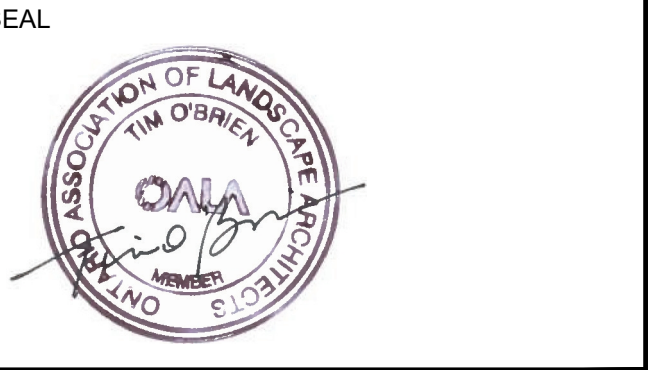
LEGEND

	TOPSOIL AND SOD AS SPECIFIED
	MINIMUM 150mm TOPSOIL DEPTH
	CONCRETE PAVING
	STONE MULCH
	WOOD CHIP MULCH
	PROPOSED TREES
	PROPOSED SHRUBS
	PROPOSED PERENNIALS
	PROPOSED ORNAMENTAL GRASSES
	PLANT SPECIES
	QUANTITY
	DETAIL NUMBER
	SHEET NUMBER
	SUBDIVISION TREES TO BE TRANSPLANTED
	NEW LOCATION OF TRANSPLANTED TREE

REFER TO TRANSPLANT NOTES AND TABLE ON THIS SHEET FOR MORE DETAILS

CONSULTANTS
 CIVIL: ARCADIS PROFESSIONAL SERVICES (CANADA) INC.
 LANDSCAPE: ARCADIS PROFESSIONAL SERVICES (CANADA)
 SURVEY: ANNS O SULLIVAN VOLLEBERG LTD.
 ARCHITECTURE: NORR ARCHITECTS & ENGINEERING LTD.
 STRUCTURAL: CUNLIFFE & ASSOCIATES
 MECHANICAL: GOODKEY, WEEDMARK & ASSOCIATES LTD.
 ELECTRICAL: GOODKEY, WEEDMARK & ASSOCIATES LTD.
 OWNER: ROHIT AT WATERIDGE 5 LTD.

04272- 1232 BLOCK 6, PLAN 4M1718



PRIME CONSULTANT

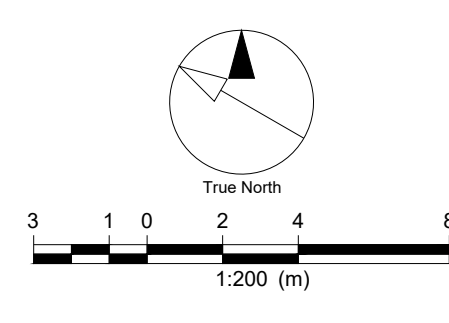
 410 Albert Street - Suite 101
 Waterloo ON N2L 3V3 Canada
 tel 519 585 2255
 www.arcadis.com

PROJECT
 ROHIT WATERIDGE VILLAGE
 BLOCK 6
 OTTAWA, ON

PROJECT NO:
 144148
DRAWN BY: R.S
CHECKED BY: M.P.
PROJECT MGR: M.P.
APPROVED BY: T.O.

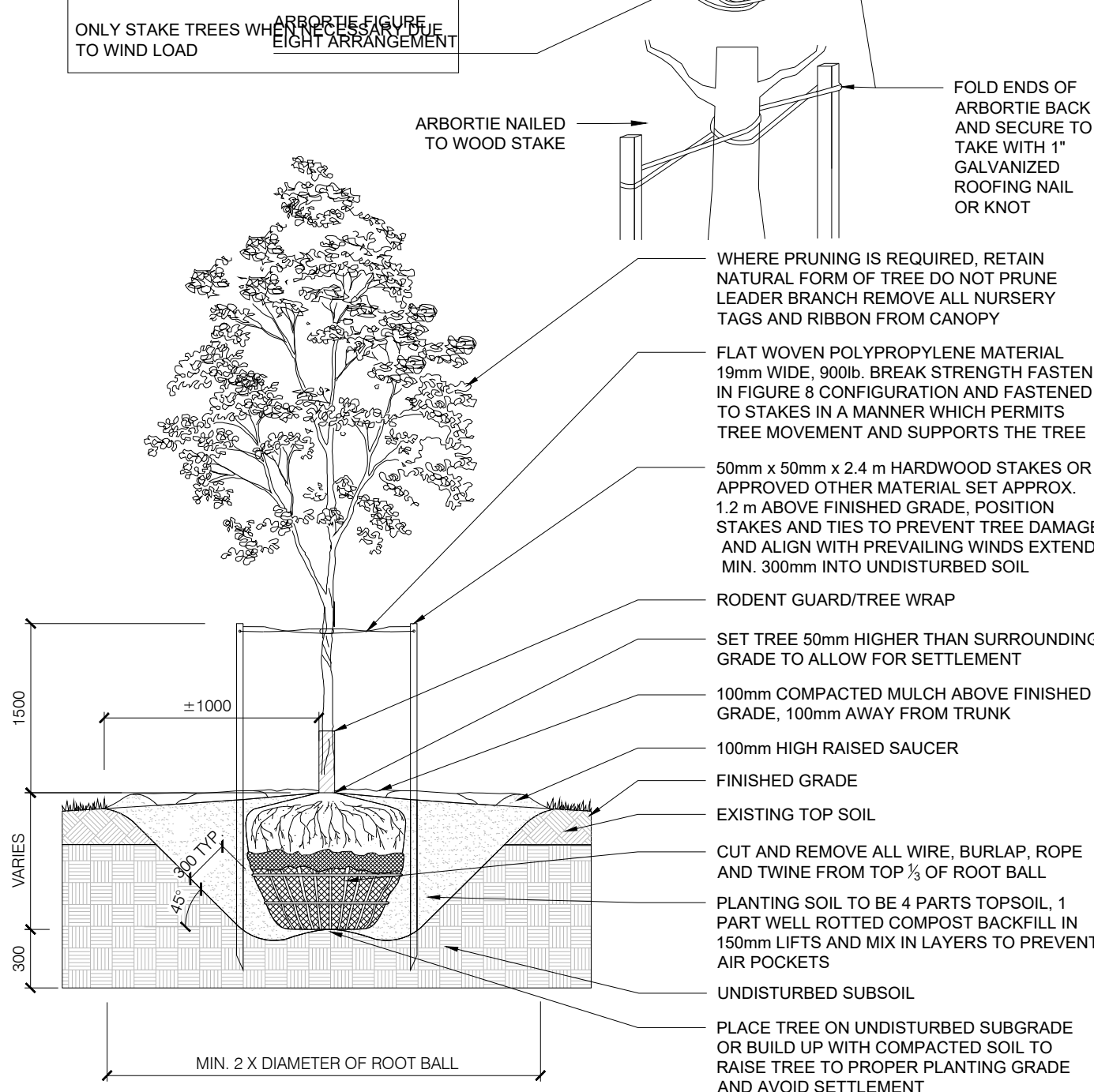
SHEET TITLE
 LANDSCAPE PLAN BUILDING B

SHEET NUMBER LP3 **ISSUE** 5

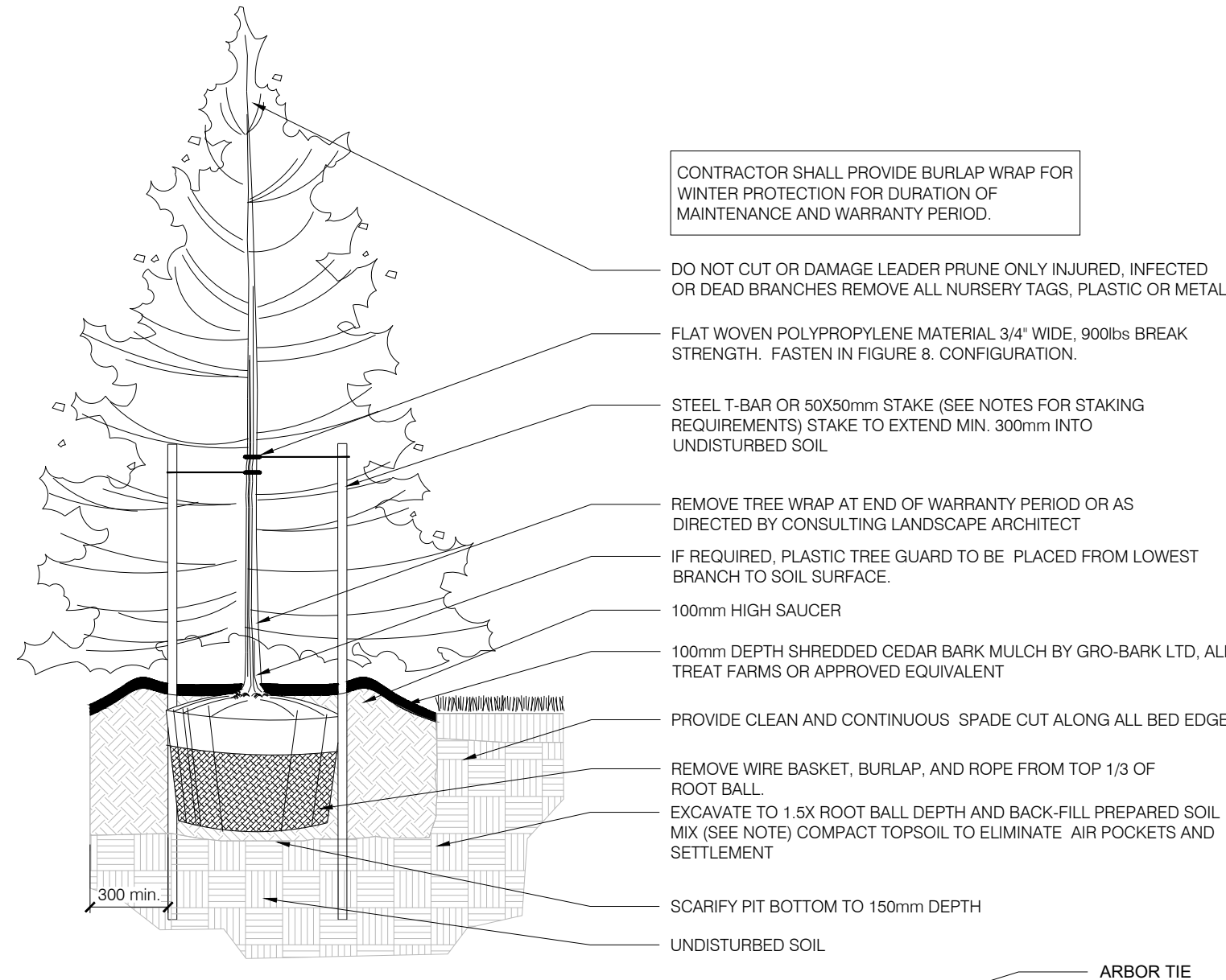


File Location: I:\Ottawa\144148_Block_6_Ph1_Y0_Production\7_03_Design\05_Landscape\Sheet\144148_Block_6_Ph1_Y0_Production\7_03_Design\05_Landscape\Sheet\144148_LP_Awg Last Saved: November 15, 2024 12:22:43 PM by Sherry Kotarysh, Roshita
 SCALE CHECK 1/16

TREE STAKING SCHEDULE:
 < 2500mm HT. - ONE STAKE TO WOOD STAKE
 > 2500mm HT. - TWO STAKES
 ONLY STAKE TREES WHEN NECESSARY DUE TO WIND LOAD

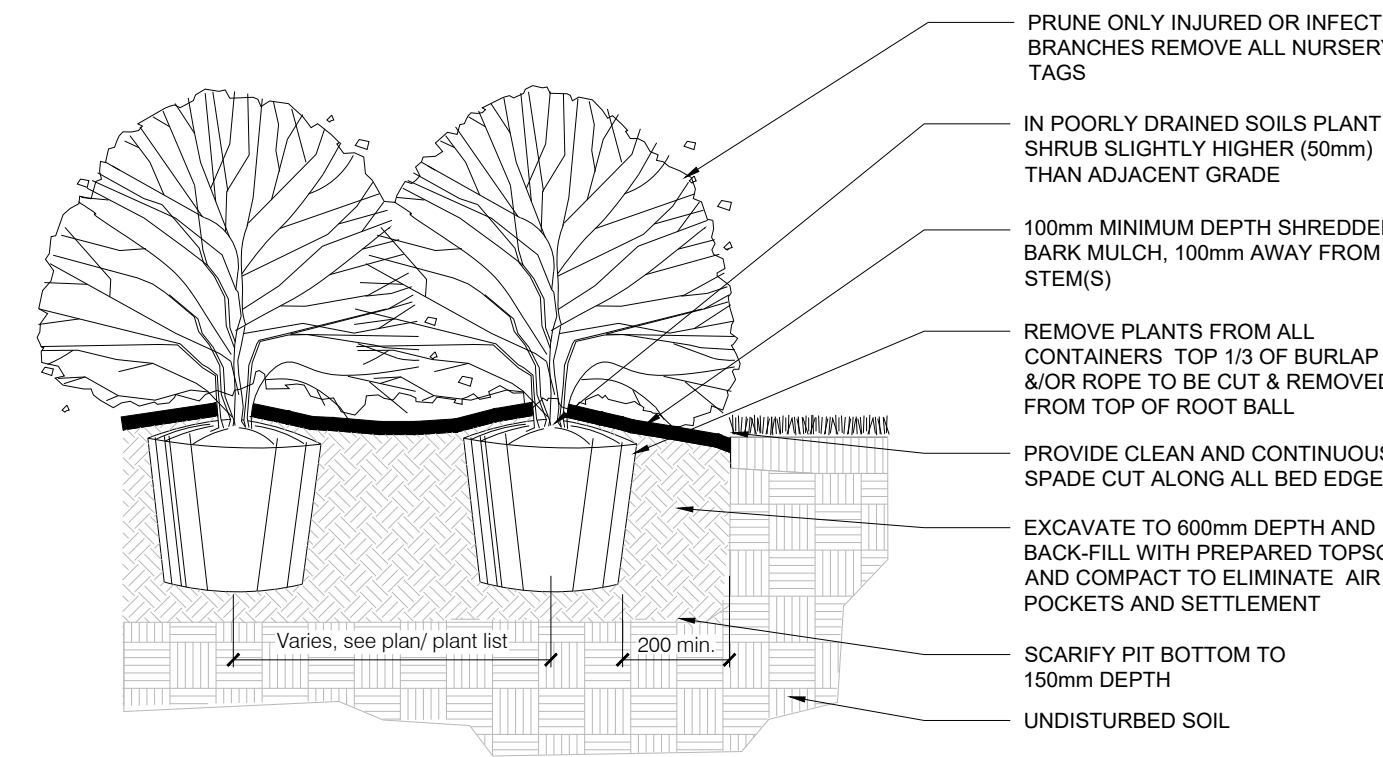


1 BALLED & BURLAPPED/WIRE BASKET DECIDUOUS
 LD1 N.T.S.

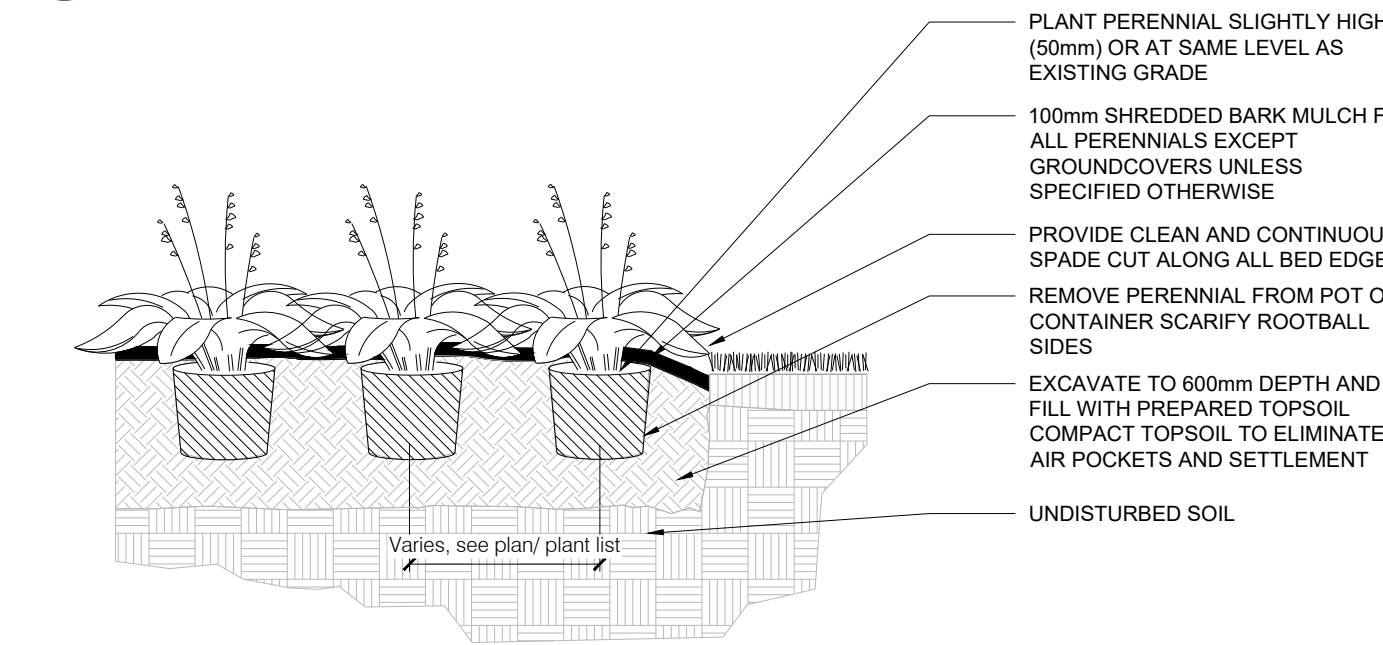


NOTES:
 1. SOIL MIXTURE: FOUR (4) PARTS NATIVE SOIL, ONE (1) PART WELL ROTTED COMPOST
 2. SAUCER SHALL BE SOAKED WITH WATER AND MULCHED IMMEDIATELY FOLLOWING PLANTING
 3. ALL DIMENSIONS ARE IN mm.
 4. STAKING SCHEDULE:
 < 2500mm HT. - ONE STAKE
 > 2500mm HT. - TWO STAKES
 SPACED TREES - THREE STAKES OR GLY WIRES
 ALL SUPPORT SYSTEMS MUST BE REMOVED ONCE TREE IS ESTABLISHED.
 5. ALL TREES TO BE STRAIGHT AND PLANTED VERTICALLY REGARDLESS OF SLOPE.
 6. TOP OF ROOT FLARE SHALL BE POSITIONED 50mm ABOVE GRADE.

2 BALLED & BURLAPPED/WIRE BASKET CONIFEROUS TREE
 LD1 N.T.S.



3 BALLED & BURLAPPED/POTTED SHRUB
 LD1 N.T.S.



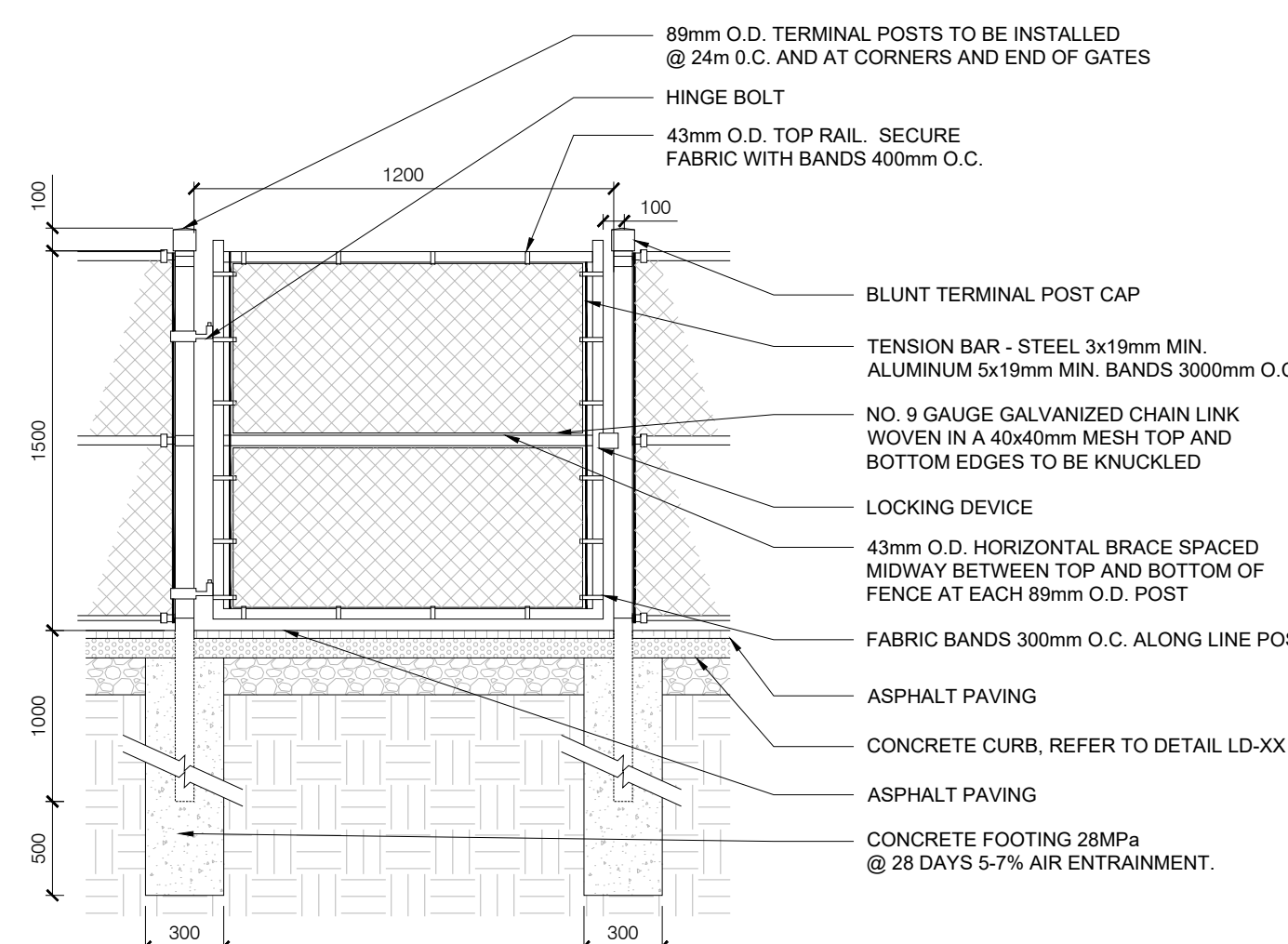
4 CONTAINER GROWN PERENNIAL/GRASS
 LD1 N.T.S.

Maine Adirondack Chair

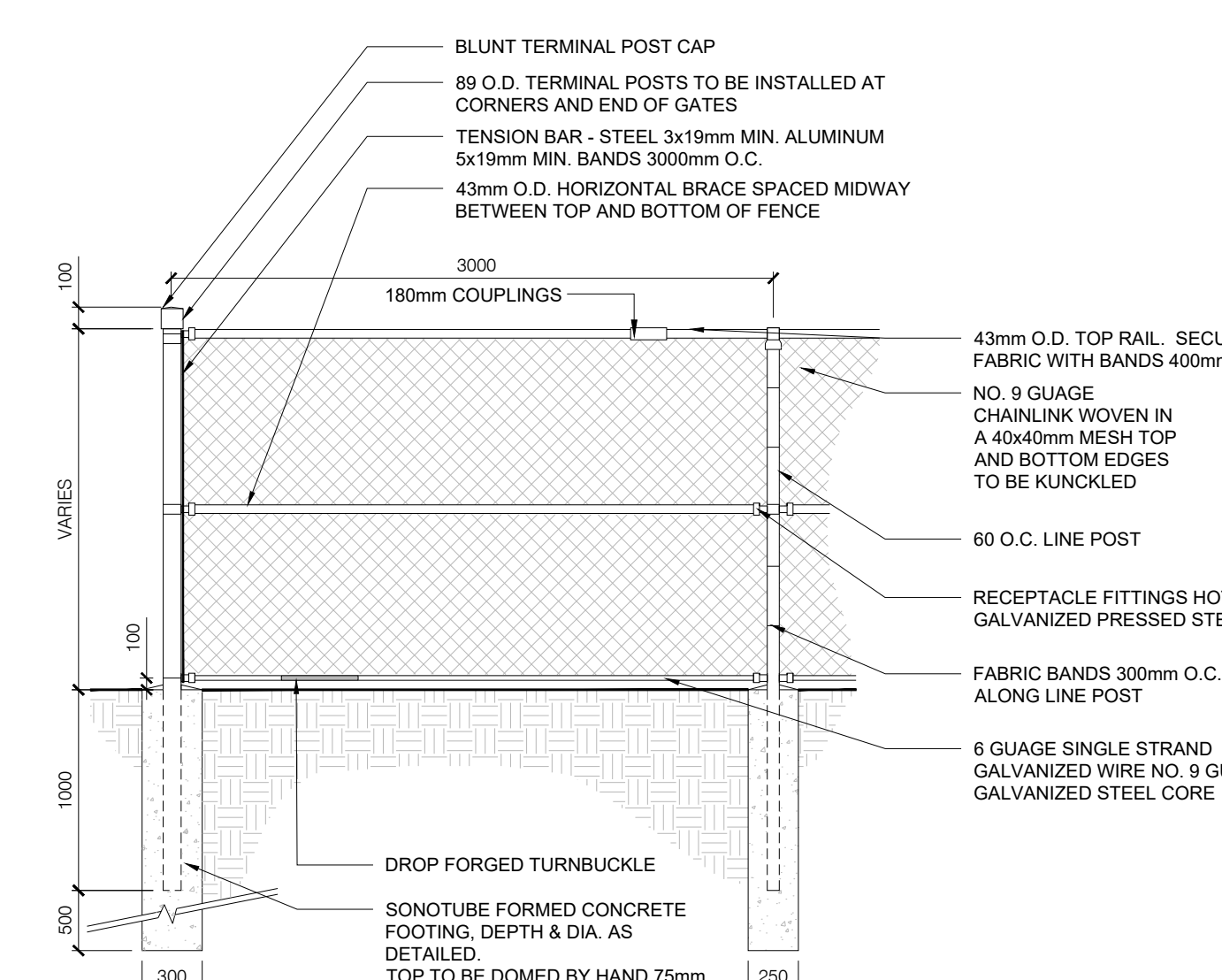
HCS-280 - Maine Adirondack Chair
 The Maine Adirondack Chair is constructed of 100% recycled plastics, and is UV stabilized to prevent fading. This modern outdoor furniture is virtually maintenance free, and will not crack, split, rot or splinter. Available in a wide array of colour choices.
 SUPPLIER: HAUSER OR APPROVED EQUIVALENT



Width: 31.5" (80.0 cm)
 Depth: 36.5" (92.7 cm)
 Height: 36.5" (92.7 cm)
 Seat Height: 14" (35.6 cm)
 Arm Height: 22" (55.9 cm)
 Weight: 45.0 lb (22.2 kg)



6 CHAINLINK GATE
 LD1 N.T.S.



7 CHAINLINK FENCE - FENCED DOG RUN
 LD1 N.T.S.

5 MUSKOKA CHAIR
 LD1 N.T.S.



MODEL NO.	DESCRIPTION	SIZE W x L x H	WT. (LBS)	PRICE EACH
H-8820	34" Square Table	34 x 34 x 29"	43	6393
H-8821	46" Square Table	46 x 46 x 29"	61	491



MODEL NO.	DESCRIPTION	SIZE L x W x H	WT. (LBS)	PRICE EACH
H-2897	Dispenser	9 x 3 x 16"	7	\$196 \$189

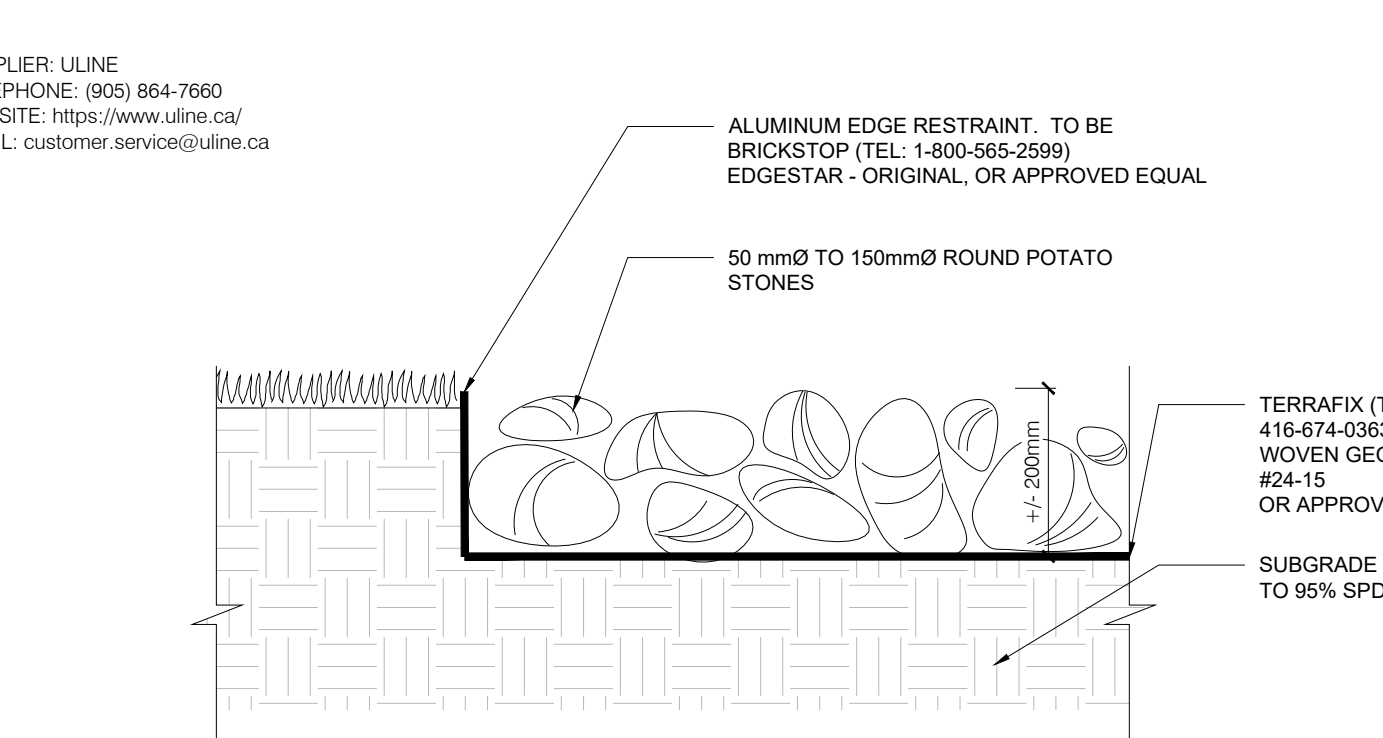


MODEL NO.	DESCRIPTION	SIZE	WT. (LBS)	PRICE EACH
H-3471	Receptacle	11.8" Diam. x 23" H	16	\$295 \$282



MODEL NO.	DESCRIPTION	SIZE W x H	WT. (LBS)	PRICE EACH
H-2898	Sign	12 x 18"	2	\$48 \$45

10 PET WASTE SIGNAGE - ULINE
 LD1 N.T.S.



11 STONE MULCH
 LD1 N.T.S.

8 TABLE AND CHAIR - ULINE
 LD1 N.T.S.

9 PET WASTE RECEPTACLES - ULINE
 LD1 N.T.S.

GENERAL NOTES
 1. Any ambiguity in the drawings, specifications or details are to be reported to the Landscape Architect for direction. These drawings shall not be used for construction unless stamped and signed by the Landscape Architect. The Contractor is not to proceed in uncertainty. The limits of work are to be clearly understood by the Contractor prior to any work taking place on the site.
 2. All dimensions are in meters unless otherwise noted. The drawings may be scaled for approximate layout. The Contractor is to verify all dimensions on the drawing(s) and report any discrepancies to the Landscape Architect.
 3. The Contractor is to locate and mark all infrastructure and utilities prior to any excavation work or planting on the site. Do not plant directly above underground utilities or infrastructure unless approved by the Landscape Architect. Dig all holes by hand when closer than 1.0m to any underground power, telephone or gas utility. The Contractor is responsible for the coordination and maintenance of all utility/infrastructure locates for the duration of the Contract.
 4. The Contractor shall supply all materials in quantities sufficient to complete work shown on these drawings. The Contractor is not to substitute materials, products or quantities without prior written consent of the Landscape Architect.
 5. The Contractor is to take all necessary precautions to protect all existing site features unless specified for removal/demolition. This includes all survey bars, stakes, monuments and sediment barriers. The Contractor is responsible for any damages incurred during construction and must make all necessary restorations and repairs to original or better condition.
 6. All existing trees, shrubs, and herbaceous plants beyond the limit of work are to be protected from construction damage. This includes but is not limited to: not storing construction materials or fuel within the dripline of an existing tree, not altering existing grades or compacting soil around protected vegetation and taking care not to disturb or expose the roots of any existing trees. The Contractor is responsible for all protection or hoarding measures of all existing trees and vegetation to be preserved within or adjacent to construction work limits.
 7. Contractor is responsible for the removal of all debris, garbage and surplus materials on site related to their contract or work and must keep the site in a clean, safe, useable condition at all times or as directed by the Contract Administrator.

PLANTING NOTES
 1. The Contractor must notify the Landscape Architect prior to the commencement of any planting. The Contractor shall supply all plants and materials in quantities sufficient to complete the work shown on this drawing. Any discrepancies between quantities shall be reported to the Landscape Architect.
 2. All landscape works will be warranted for a period of two years following inspection and written notice of start of warranty period as determined and provided by the Landscape Architect. Plant material, which is not in a healthy, vigorous growing condition at the end of the warranty period, shall be replaced to the satisfaction of the Landscape Architect / Owner.
 3. The Landscape Architect reserves the right to extend Contractor's warranty responsibilities for an additional year if, at the end of initial warranty period, leaf development and growth is not sufficient to ensure future survival as determined by the Landscape Architect.
 4. The Contractor is to identify with Landscape Architect/Owner any maintenance requirements necessary for warranty purposes.
 5. Plant materials specified for this project will conform to the Canadian Nursery Landscape Association (C.N.L.A.) for size, variety and condition as indicated on the plant schedule shown on these drawings. Any plant materials which do not conform will be promptly removed from the site and replaced by the Contractor at no additional cost to the project.
 6. The Landscape Architect is to be contacted for inspection and written approval prior to plant material arriving on site. The Landscape Architect reserves the right to reject any plant materials that have not been inspected and approved.
 7. The Landscape Architect reserves the right to refuse acceptance of any plant displaying poor growth habits, injury or disease. Any plant material that is rejected by the Landscape Architect will be promptly removed from the site and replaced with material of acceptable quality at no additional charge to the project.
 8. Plant materials collected from wild sources will not be accepted without written approval of the Landscape Architect. The Landscape Architect reserves the right to require that supplier invoices be submitted for inspection and approval prior to acceptance.
 9. On-site layout of the plant materials to be approved by the Landscape Architect prior to installation. Minor field adjustments to plant material locations may be necessary to respond to the locations of existing plants and site conditions. The Contractor to review with Landscape Architect where relocations are necessary. The Contractor must receive approval from Landscape Architect prior to installation.
 10. Plants are not to be installed during extreme heat, drought, or other undesirable conditions. Thoroughly water all plants immediately after installation. The Contractor shall regularly monitor site conditions and water as required to ensure healthy growth conditions throughout the duration of the warranty period.
 11. Do not plant directly in centerline of drainage swales or depression areas. Where proposed planting locations conflict with constructed swales or low-lying wet areas, contact Landscape Architect for direction.
 12. All plants are to be planted in accordance with the planting details shown on this drawing. All plants are to be installed vertical and plumb, regardless of ground slope.
 13. Supply and place topsoil in accordance with OPSS 802 to a minimum depth of 150mm in seed/sod areas and 600mm in planting beds unless otherwise specified. Each source of topsoil, imported or native to be approved by Landscape Architect prior to use. Submit topsoil analysis/test results to Landscape Architect prior to order or delivery to site. Testing to be in accordance with Contract specifications. Prepared topsoil shall be 4 parts topsoil to one part well-rotted compost.
 14. Mulch: to be spread uniformly around the base of trees and shrubs to a minimum depth of 100 mm. Do not place mulch in direct contact with trunk or stem(s). Allow a 100 mm mulch free zone at trunk/stems. Shrubs to be in continuously mulched planting beds unless otherwise specified.
 15. Supply and place seed in accordance with OPSS 804 unless otherwise specified. All 5:1 or greater slopes to be seeded with tackifier. All slopes greater than 3:1 shall be matted with an erosion control blanket. Supply and place sod in accordance with OPSS 803 unless otherwise specified.
 16. The Contractor is to remove dead or damaged branches on trees or shrubs. All pruning shall be performed in accordance with standard horticultural practices and appropriate timing for each species.
 17. All stakes and associated ties are to be removed after the first full growing season. Rodent guards are to be removed at the conclusion of the warranty period. If utilized, Gato bags are to be removed for winter months.

CLIENT
ROHIT COMMUNITIES

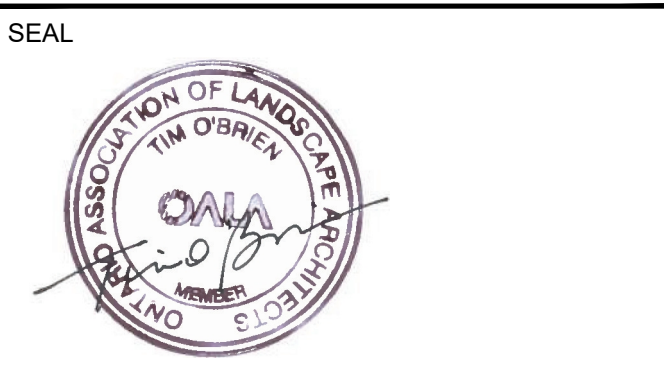
550 91 STREET SW #101,
 EDMONTON, AB T6X0V1

COPYRIGHT
 This drawing has been prepared solely for the intended use, thus any reproduction or distribution for any purpose other than authorized by Arcadis is forbidden. Written dimensions shall have precedence over scaled dimensions. Contractors shall verify and be responsible for all dimensions and conditions on the job, and Arcadis shall be informed of any variations from the dimensions and conditions shown on the drawing. Shop drawings shall be submitted to Arcadis for general conformance before proceeding with fabrication.
 Arcadis Professional Services (Canada) Inc.
 is a part of Arcadis

No.	DESCRIPTION	DATE
1	ISSUED FOR SPA SUBMISSION	2024-03-15
2	ISSUED FOR SPA SUBMISSION	2024-04-24
3	ISSUED FOR SPA SUBMISSION	2024-05-08
4	ISSUED FOR SPA SUBMISSION	2024-05-31
5	ISSUED FOR SPA SUBMISSION	2024-11-15

CONSULTANTS
 CIVIL: ARCADIS PROFESSIONAL SERVICES (CANADA) INC.
 LANDSCAPE: ARCADIS PROFESSIONAL SERVICES (CANADA) SURVEY: ANNIS, O'SULLIVAN, VOLLEBERG LTD.
 ARCHITECTURE: NORR ARCHITECTS & ENGINEERING LTD.
 STRUCTURAL: CUNLIFFE & ASSOCIATES
 MECHANICAL: GOODKEY, WEEDMARK & ASSOCIATES LTD.
 ELECTRICAL: GOODKEY, WEEDMARK & ASSOCIATES LTD.
 OWNER: ROHIT AT WATERIDGE 5 LTD.

04272- 1232 BLOCK 6, PLAN 4M1718



KEY PLAN

PRIME CONSULTANT
ARCADIS
 410 Albert Street - Suite 101
 Waterloo ON N2L 3V3 Canada
 tel 519 585 2255
 www.arcadis.com

PROJECT
ROHIT WATERIDGE VILLAGE BLOCK 6
 OTTAWA, ON

PROJECT NO:
 144148
 DRAWN BY:
 R.S
 CHECKED BY:
 M.P.
 PROJECT MGR:
 M.P.
 APPROVED BY:
 T.O.

SHEET TITLE
LANDSCAPE DETAILS

SHEET NUMBER
LD1
 ISSUE
5

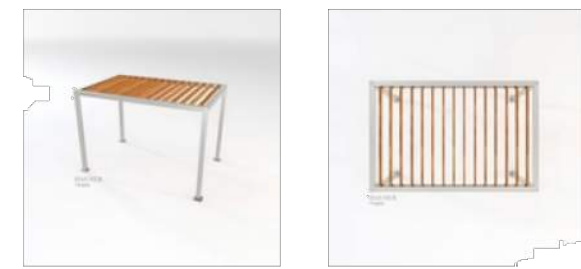
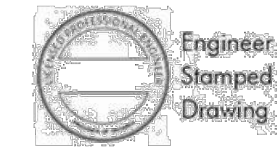
CUSTOM SIZE (5M X 5M)

Pergola, 6.5' X 10.5' X 8' H
ST10-C14V-6.5x10.5-8 - Pergola

Our 'Pergola' is the ideal solution for any shade requirement. Flexible and versatile, the all-aluminum 4" x 4" post and cross beam construction has been professionally engineered to allow for an infinite number of configurations. Create smaller shade zones with this 8' x 8' pergola or scale it up to cover a more substantial footprint. Shown here with 1.5" x 4" vertically oriented cedar purlins; a variety of inset roof slat sizes and materials are available to choose from. The Pergola incorporates our proprietary Konnectr System to ensure that each design is as fluid as possible, while still meeting the requisite load and wind analysis. The Hauser Konnectr System, consisting of custom engineered Konnectr Blocks and stainless steel countersunk hardware, ensures that each beam and column connection is seamless, strong and virtually undetectable. Built-in surface mount plates with concealed covers provide the finishing element to secure the connection. The core frame has been designed to accept a variety of lighting, charging and heat options. Create your own custom size and shape.



Width: 126" (320.0 cm)
Depth: 78" (198.1 cm)
Height: 96" (243.8 cm)
Weight: 278.0 lb (126.2 kg)

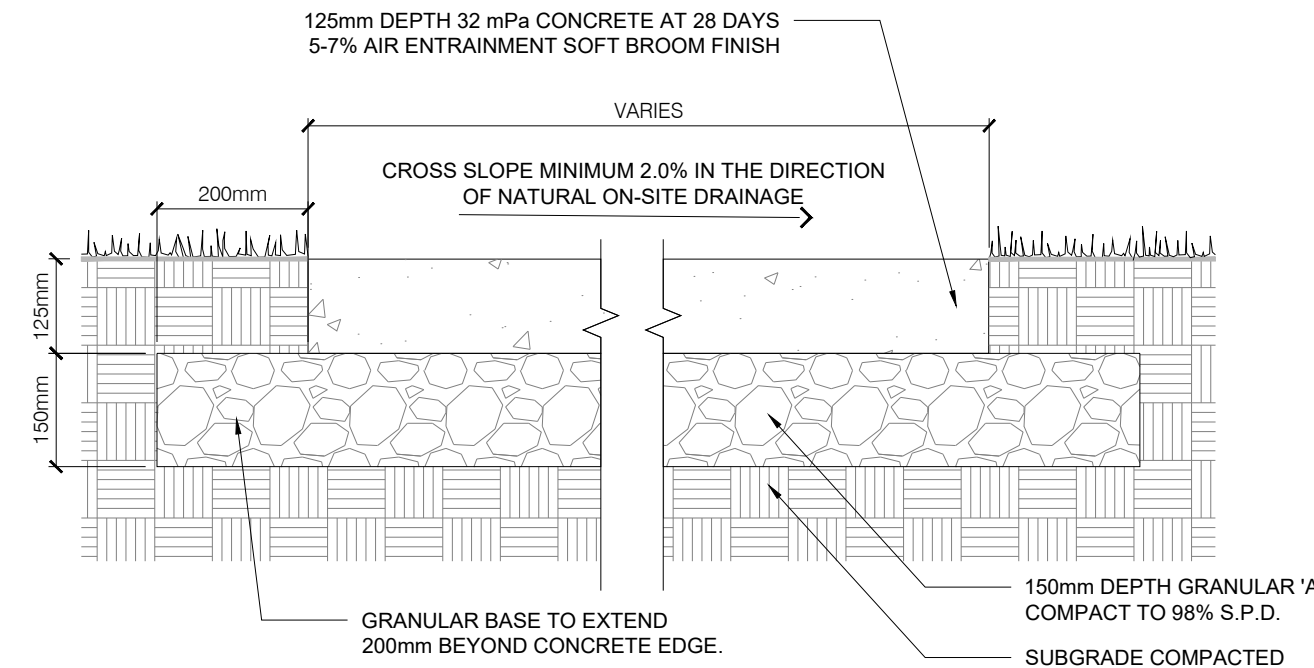


SUPPLIER: HAUSER
TELEPHONE: (800)-268-7328
WEBSITE: https://hauserite.com/
EMAIL: sales@hauserite.com

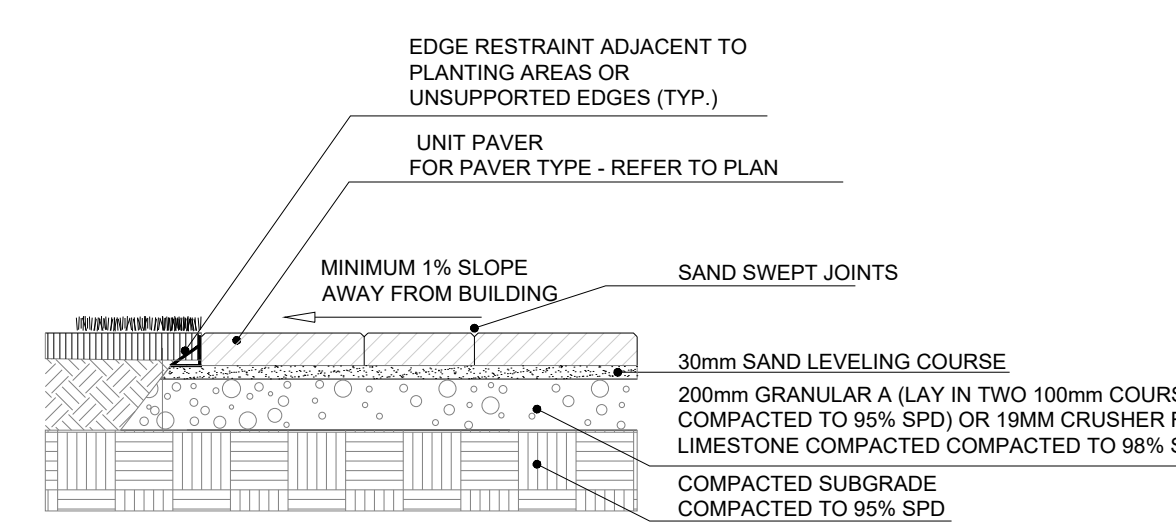
sales@hauserite.com | 1-800-268-7328 | hauserite.com

1 HAUSER - PERGOLA
LD2 N.T.S.

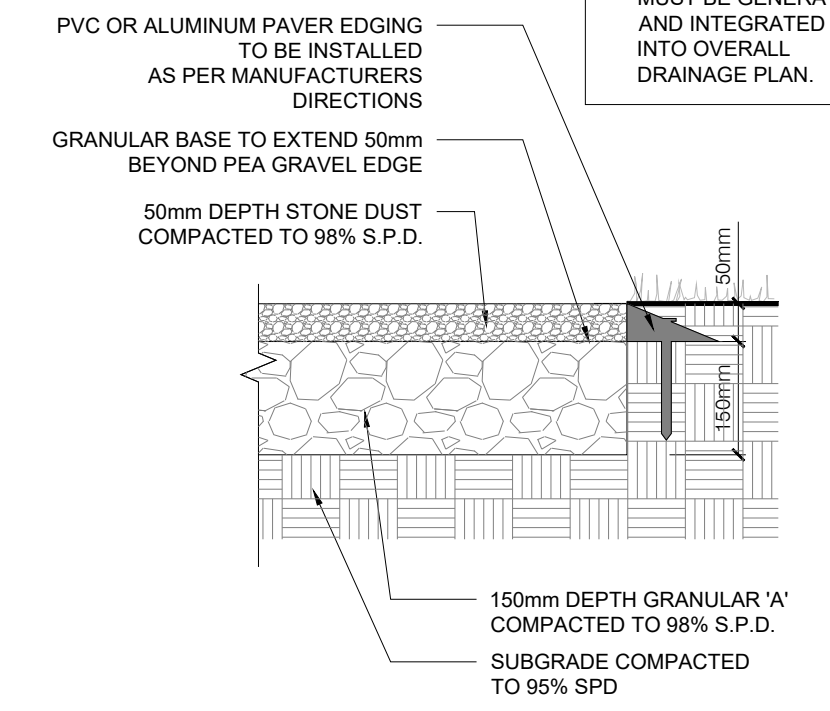
NOTES:
1. EXCAVATE SPECIFIED MINIMUM DEPTH OR GREATER TO ENSURE REMOVAL OF ALL TOPSOIL AND UNSUITABLE SUBGRADE MATERIAL. REFER TO OPSD 110.010 FOR EXPANSION JOINT DETAILS.
2. DEPTHS ONTO OF THE PARKING DECK MAY VARY. ENSURE AREA BETWEEN ROOF DECK AND SIDEWALK IS A GRANULAR BASE - DEPTH MAY VARY THROUGHOUT THE PLAN.



2 CONCRETE PAVING - PEDESTRIAN
LD2 N.T.S.



3 UNIT PAVING
LD2 N.T.S.



4 STONE DUST PAVING
LD2 N.T.S.

NOTES:
1. POSITIVE DRAINAGE FROM SURFACE MUST BE GENERATED AND INTEGRATED INTO OVERALL DRAINAGE PLAN.

CLIENT
ROHIT COMMUNITIES

550 91 STREET SW #101, EDMONTON, AB T6X0V1

COPYRIGHT
This drawing has been prepared solely for the intended use, thus any reproduction or distribution for any purpose other than authorized by Arcadis is forbidden. Written dimensions shall have precedence over scaled dimensions. Contractors shall verify and be responsible for all dimensions and conditions on the job, and Arcadis shall be informed of any variations from the dimensions and conditions shown on the drawing. Shop drawings shall be submitted to Arcadis for general conformance before proceeding with fabrication.

Arcadis Professional Services (Canada) Inc.
is a part of Arcadis

No.	DESCRIPTION	DATE
1	ISSUED FOR SPA SUBMISSION	2024-03-15
2	ISSUED FOR SPA SUBMISSION	2024-04-24
3	ISSUED FOR SPA SUBMISSION	2024-05-08
4	ISSUED FOR SPA SUBMISSION	2024-05-31
5	ISSUED FOR SPA SUBMISSION	2024-11-15

Skyline Bike Rack With Tropical Wood Accent
PS-78-102-21-AW Skyline Bike Rack

Our Skyline Bike Rack features an all-welded, powdercoated aluminum construction. Shown here with our 'Pewter' powdercoat finish, and an Ipe tropical wood accent. Custom sizes available upon request.



Width: 30" (76.2 cm)
Depth: 2" (5.1 cm)
Height: 32" (81.3 cm)



SUPPLIER: HAUSER
TELEPHONE: (800)-268-7328
WEBSITE: https://hauserite.com/
EMAIL: sales@hauserite.com

5 HAUSER - BIKE RACK
LD2 N.T.S.

Ridgewood Bench With Arms
PS-692-22-AL-72-WD3-WD3-A-BD

Our 'Ridgewood' bench with Armrests features an all-welded aluminum, powdercoated frame with 'Ipe' tropical wood, envirowood, or aluminum slats. Available in a variety of sizes and finishes.



Width: 72" (182.9 cm)
Depth: 24.43" (62.1 cm)
Height: 30.18" (76.6 cm)
Weight: 120.0 lb (54.5 kg)



SUPPLIER: HAUSER
TELEPHONE: (800)-268-7328
WEBSITE: https://hauserite.com/
EMAIL: sales@hauserite.com

6 HAUSER - BENCH
LD2 N.T.S.

CONSULTANTS
CIVIL: ARCADIS PROFESSIONAL SERVICES (CANADA) INC.
LANDSCAPE: ARCADIS PROFESSIONAL SERVICES (CANADA)
SURVEY: ANNIS, O SULLIVAN, VOLLEBERG LTD
ARCHITECTURE: NORR ARCHITECTS & ENGINEERING LTD.
STRUCTURAL: CUNLIFFE & ASSOCIATES
MECHANICAL: GOODKEY, WEEDMARK & ASSOCIATES LTD.
ELECTRICAL: GOODKEY, WEEDMARK & ASSOCIATES LTD.
OWNER: ROHIT AT WATERIDGE S LTD.

04272- 1232 BLOCK 6, PLAN 4M1718

SEAL



KEY PLAN

PRIME CONSULTANT



410 Albert Street - Suite 101
Waterloo ON N2L 3V3 Canada
tel 519 585 2255
www.arcadis.com

PROJECT
**ROHIT WATERIDGE VILLAGE
BLOCK 6**

OTTAWA, ON

PROJECT NO:
144148

DRAWN BY:
R.S

CHECKED BY:
M.P.

PROJECT MGR:
M.P.

APPROVED BY:
T.O.

SHEET TITLE
LANDSCAPE DETAILS

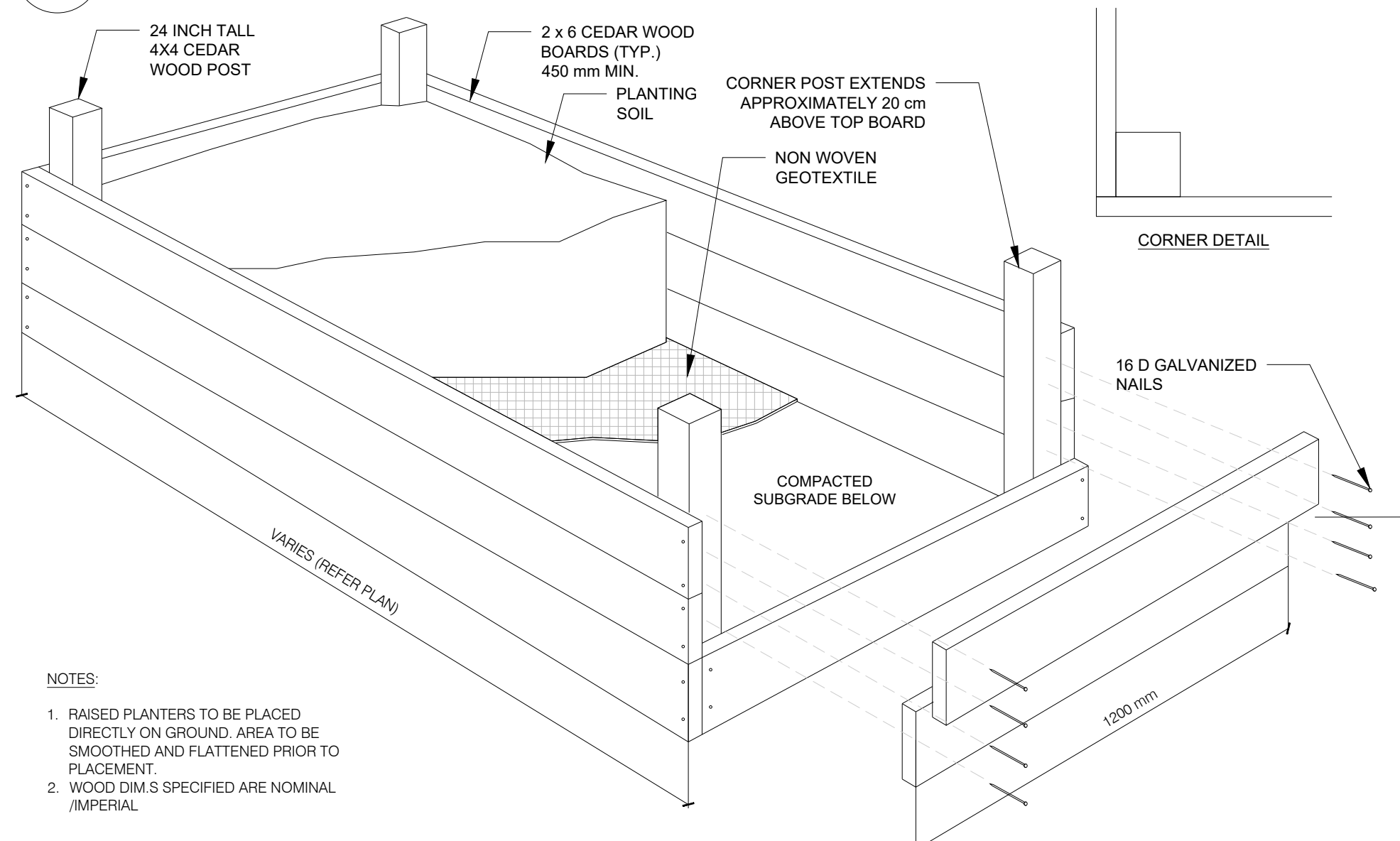
SHEET NUMBER

LD2

ISSUE

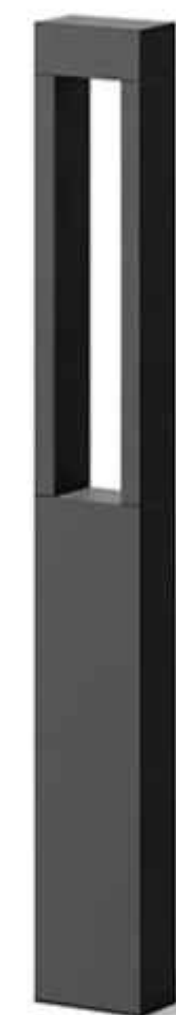
5

7 WOOD CHIP MULCH
LD2 N.T.S.

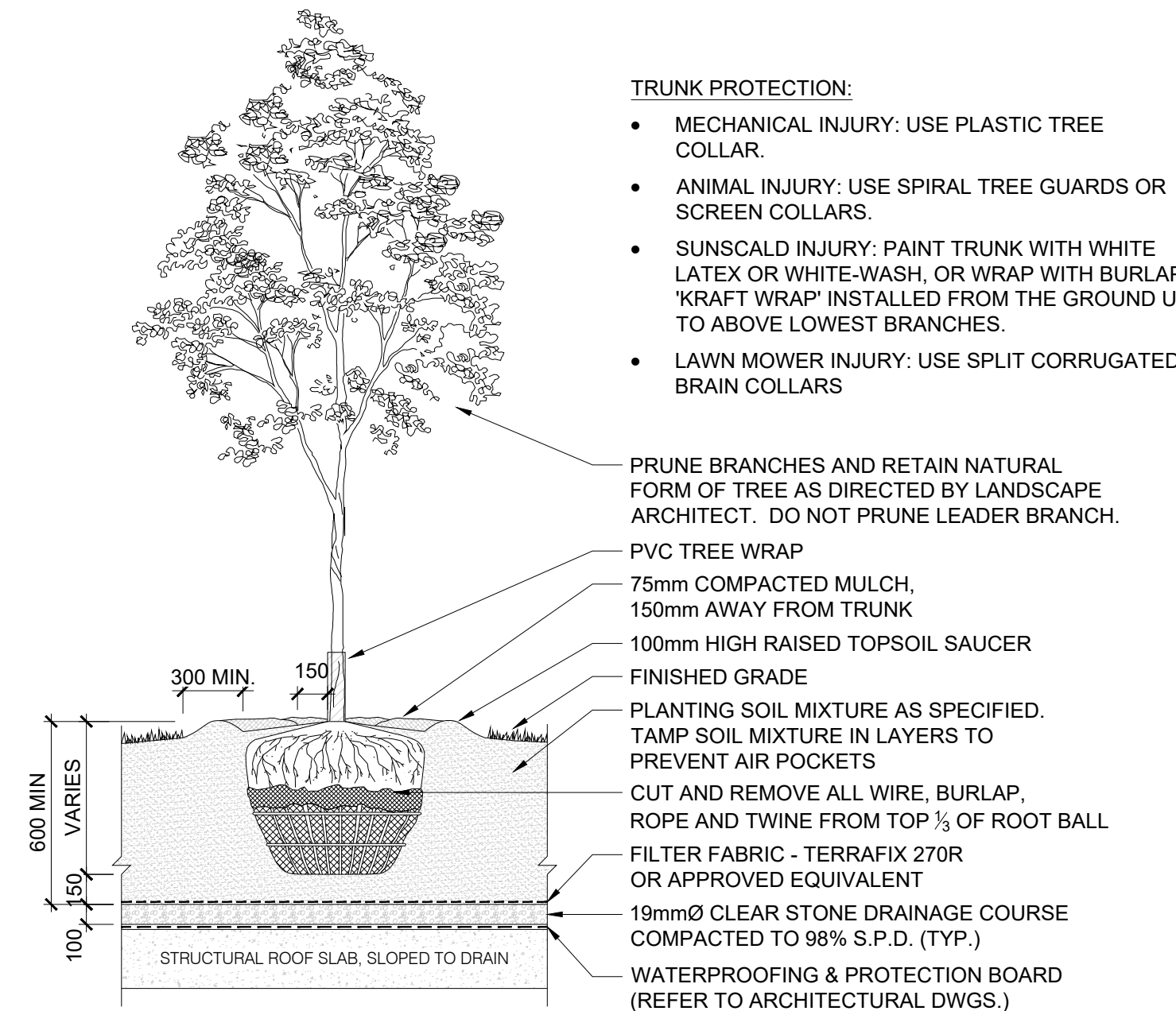


8 RAISED PLANTING BED
LD2 N.T.S.

SPECIFICATIONS:
SUPPLIER: LUMENS
ITEM#: BEG481342
MFR ID: 77265-BLK
PANEL HEIGHT: 914mm (3)
SIZE: 3.9X 27.5'
COLOUR: GRAPHITE
INSTALLATION TYPE: IN GROUND
WEBSITE: https://www.lumens.com/
PHONE: (877) 445-4486



9 LUMENS - LIGHT BOLLARDS
LD2 N.T.S.



10 TREE PLANTING ON CONCRETE BASEMENT SLAB
LD2 N.T.S.