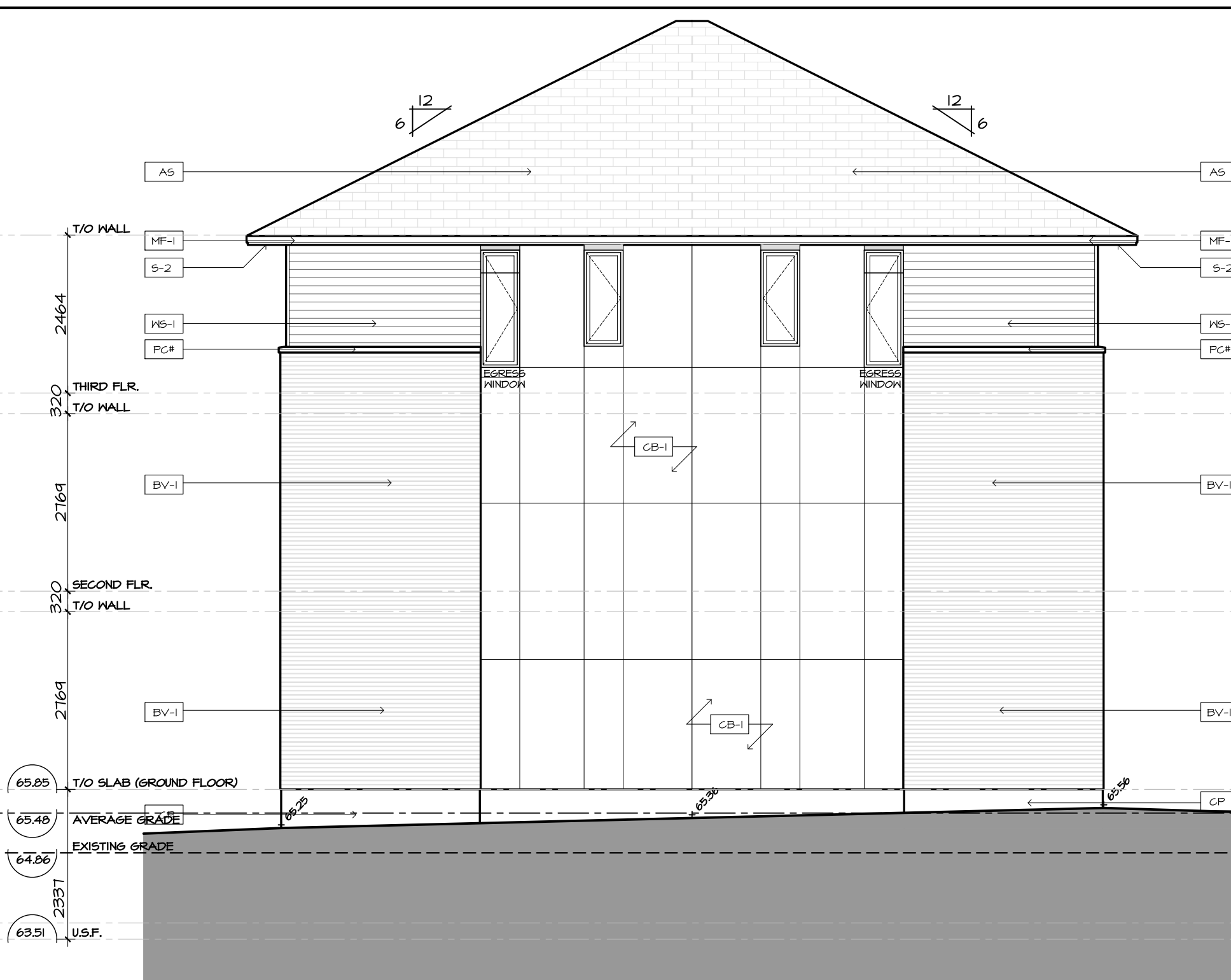




1 BLOCK T2 - SOUTH-EAST ELEVATION
A2.02 SCALE 1:75



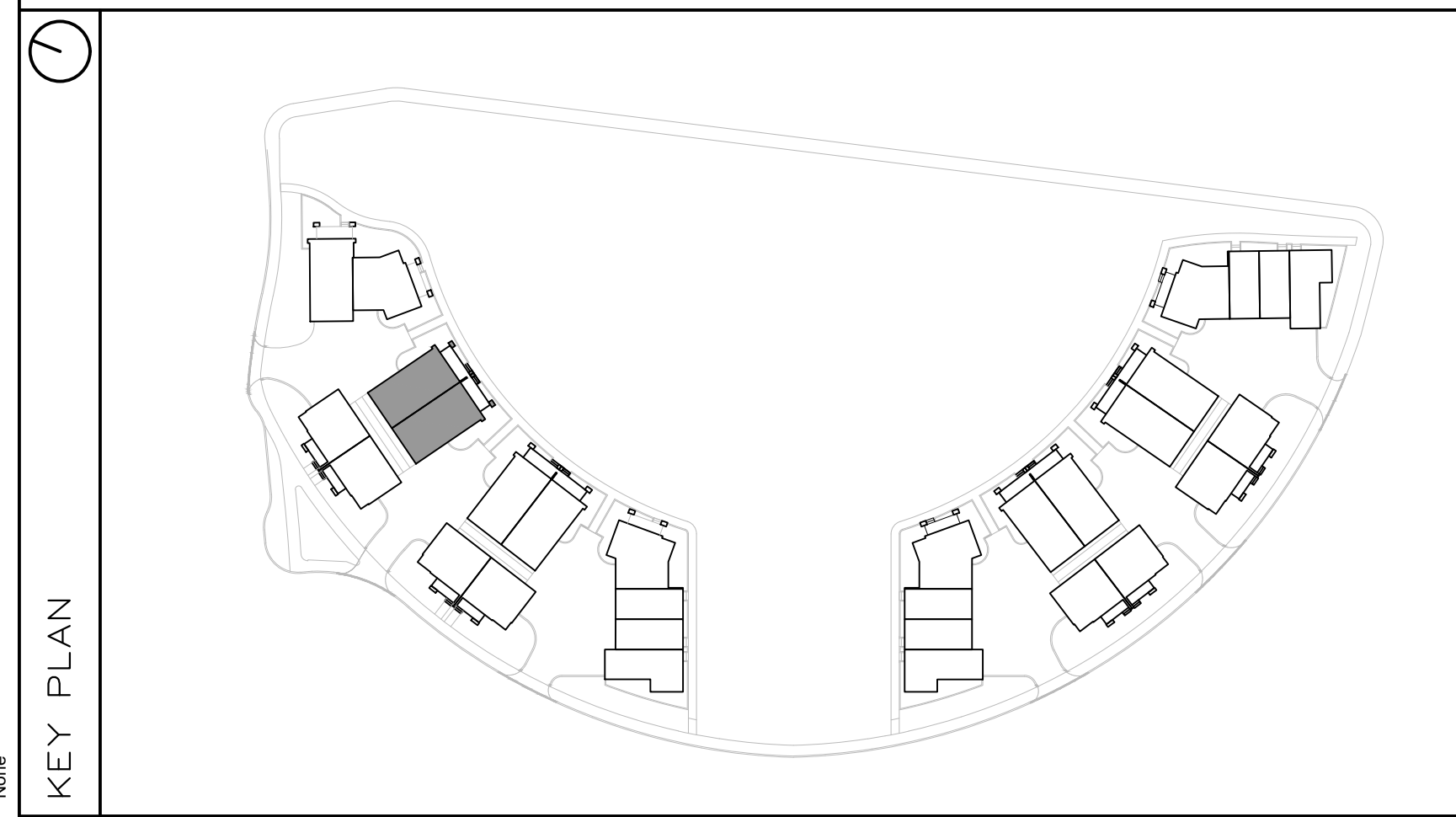
2 BLOCK T2 - NORTH-WEST ELEVATION
A2.02 SCALE 1:75



3 BLOCK T2 - SOUTH-WEST ELEVATION
A2.02 SCALE 1:75



4 BLOCK T2 - NORTH-EAST ELEVATION
A2.02 SCALE 1:75



FINISH MATERIAL LEGEND:

BV-1	BRICK VENEER; COLOR TBD
SV-1	STONE VENEER; ARRISCRAFT RENAISSANCE; COLOR: TBD
MF-1	PRE-FIN. METAL FLASHING; COLOR: GRAPHITE
MP-1	ZINC OR EQUIVALENT METAL PANEL; COLOR: CHARCOAL
MP-2	COPPER OR EQUIVALENT METAL PANEL; COLOR: COPPER
S-1	T&G CEDAR SOFFIT C/W PRE-FIN. METAL VENT STRIPS
S-2	HARDIE SOFFIT PANEL C/W VENT STRIP BY GENTEG; COLOR: GRAPHITE (TBD)
WS-1	PRE-FIN. HORIZ. WOOD (5"); SIDING BY CAPE COD; COLOR: CHARCOAL (TBD)
WS-2	PRE-FIN. HORIZ. WOOD (5"); SIDING BY CAPE COD; COLOR: 'LIGHT' (TBD)
WS-3	PRE-FIN. VERT. WOOD (5"); SIDING BY CAPE COD; COLOR: 'LIGHT' (TBD)
CB-1	CEMENT BOARD PANELS
PC#	PRECAST CONCRETE (PROFILE #)
CP	CEMENT PAVING
GR	PRE-FIN. PRE-ENG. ALUM. & GLASS GUARDRAIL
RV	ROOF VENT
AS	ASPHALT SHINGLES
SCON	SCONCE LIGHTING

PROJECT CONSULTANTS

DEVELOPER / OWNER
EQ HOMES INC.
THE REGIONAL GROUP
1751 WOODWARD DRIVE - 2ND FLOOR
OTTAWA, ON K2C 0P6
PHONE: (613) 230-2100

ARCHITECT
HOBIN ARCHITECTURE INC.
63 PAMILLA STREET
OTTAWA, ON K1S 3K7
CONTACT: MARK THIVERSE
PHONE: (613) 238-1200 x 105

PLANNING
NOVATECH
240 MICHAEL CONFLAND DRIVE SUITE 200
OTTAWA, ON K2M 1P6
CONTACT: ROBERT TRAN
PHONE: (613) 254-4643 x 212

LANDSCAPE
NOVATECH
240 MICHAEL CONFLAND DRIVE SUITE 200
OTTAWA, ON K2M 1P6
CONTACT: RYAN JAMES
PHONE: (613) 254-4643 x 222

TRAFFIC
NOVATECH
240 MICHAEL CONFLAND DRIVE SUITE 200
OTTAWA, ON K2M 1P6
CONTACT: BRAD BYVELDIS
PHONE: (613) 254-4643 x 206

CIVIL
NOVATECH
240 MICHAEL CONFLAND DRIVE SUITE 200
OTTAWA, ON K2M 1P6
CONTACT: TREVOR MCKAY
PHONE: (613) 254-4643 x 201

SURVEYOR
ANNIS, O'SULLIVAN, VOLLEBECK LTD.
14 GONCOURSE SUITE 500
OTTAWA, ON K2E 1S6
CONTACT: ANDREA BELL
PHONE: (613) 721-4352 x 226

GEOTECHNICAL
PATERSON GROUP INC.
11 AURIGA DRIVE
OTTAWA, ON K2E 1T3
CONTACT: SCOTT S. DENNIS
PHONE: (613) 226-1351

no.	date	revision
2	2024-11-29	REISSUED FOR ZBA + SPC
1	2024-10-11	ISSUED FOR SPC

It is the responsibility of the appropriate contractor to check and verify all dimensions on site and report all errors and/or omissions to the architect.

All contractors must comply with all pertinent codes and by-laws.

Do not scale drawings.

This drawing may not be used for construction until signed.

Copyright reserved.



Hobin Architecture Incorporated
63 Pamilla Street
Ottawa, Ontario
Canada K1S 3K7
T: 613-238-7200
F: 613-235-2005
E: mail@hobinarc.com
hobinarc.com

HOBIN ARCHITECTURE

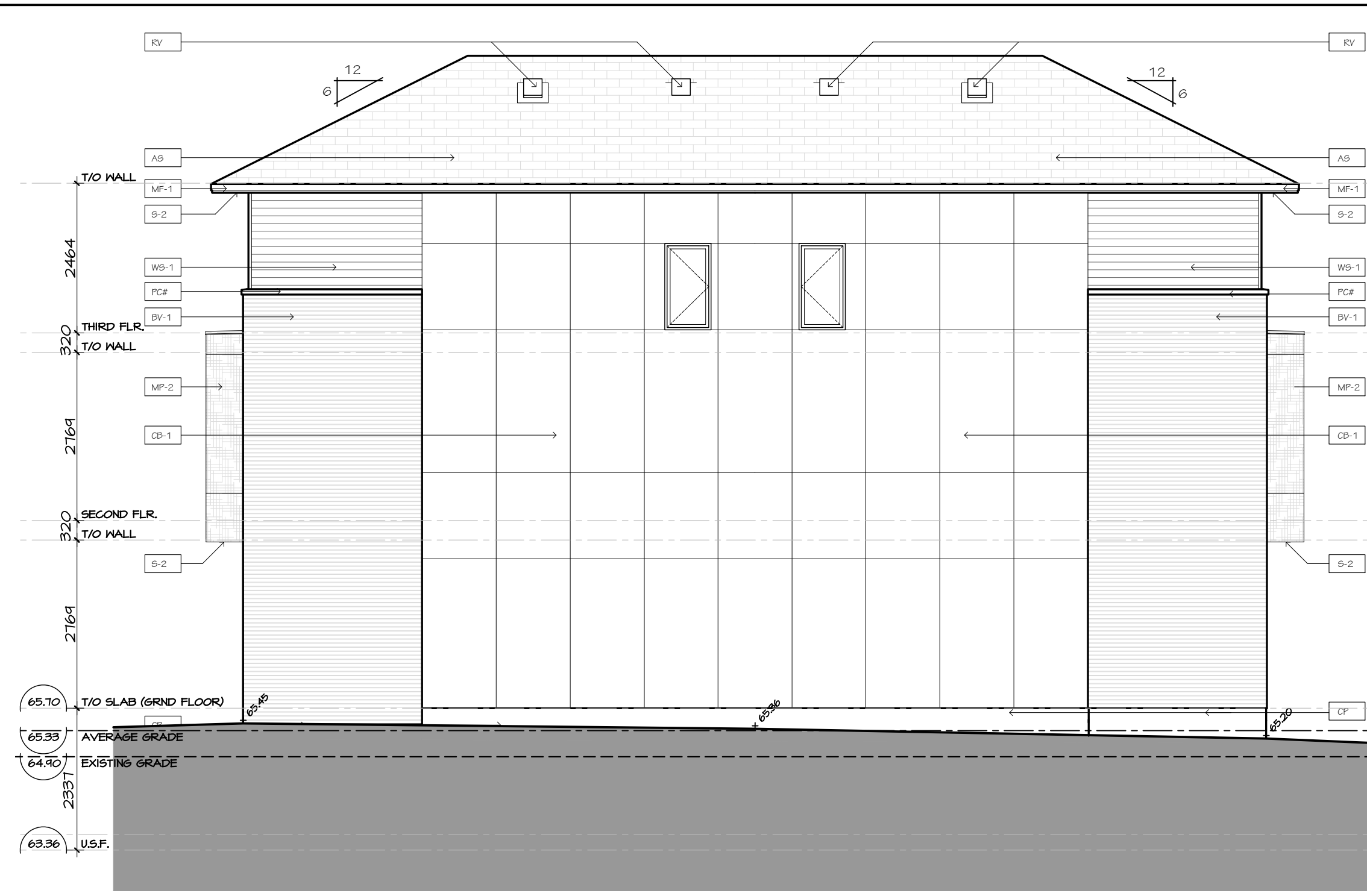
PROJECT/LOCATION:
FORECOURT TOWNHOMES
175 MAIN STREET - GREYSTONE

DRAWING TITLE:
ELEVATIONS - BLOCK T2
BLOCK 29
295 DESCHÂTELETS AVE.

DRAWN BY: DATE: 24/09/23 SCALE: 1:75

PROJECT:
DRAWING NO.: A2.02
REVISION NO.:

City Plan No.: #19191



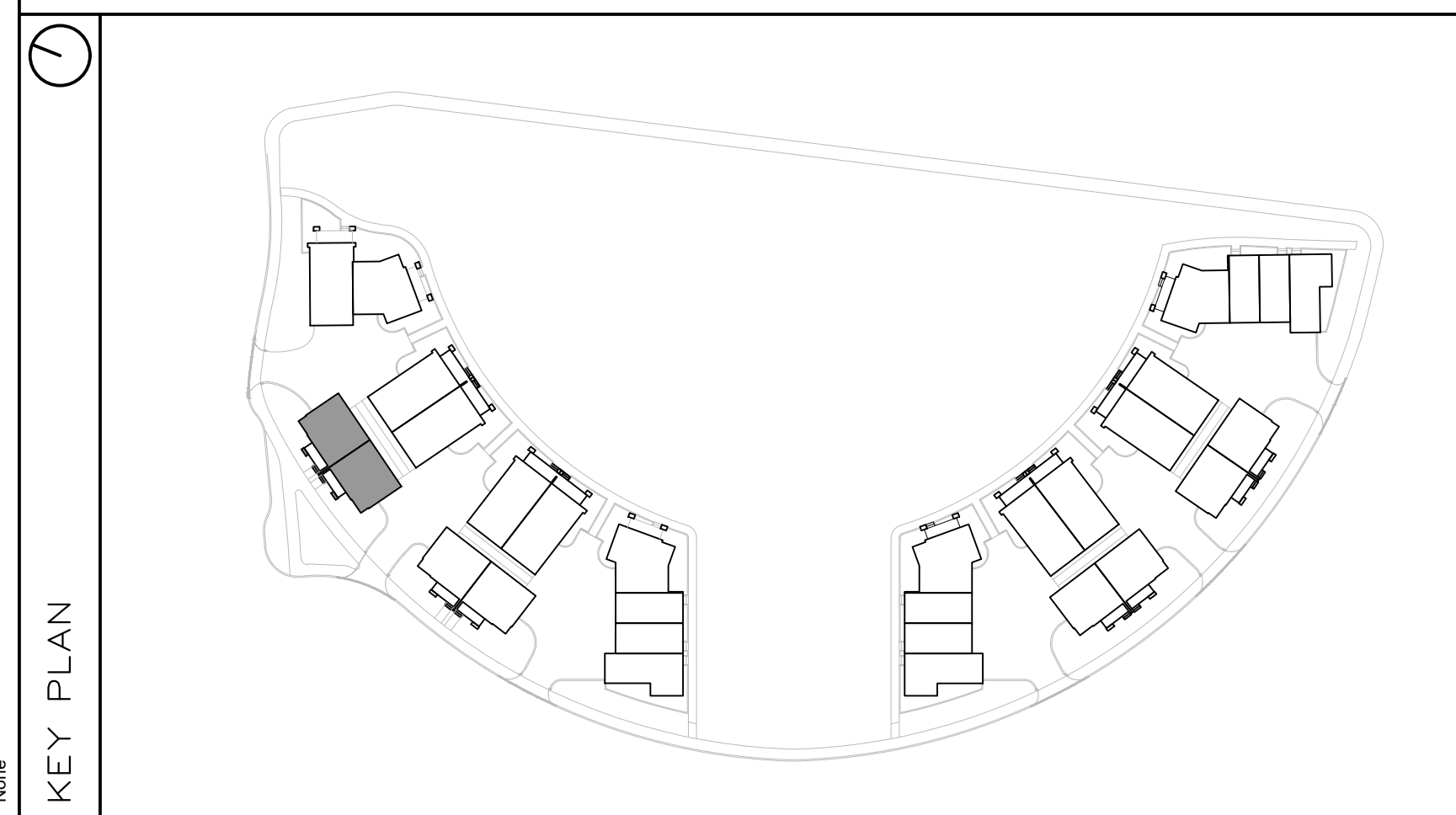
1 BLOCK T3 - NORTH-WEST ELEVATION
A2.03 SCALE 1:75

2 BLOCK T3 - SOUTH-EAST ELEVATION
A2.03 SCALE 1:75



3 BLOCK T3 - SOUTH-WEST ELEVATION
A2.03 SCALE 1:75

4 BLOCK T3 - NORTH-EAST ELEVATION
A2.03 SCALE 1:75



FINISH MATERIAL LEGEND:

BV-1	BRICK VENEER; COLOR TBD
SV-1	STONE VENEER; ARRISCRAFT RENAISSANCE; COLOR: TBD
MF-1	PRE-FIN. METAL FLASHING; COLOR: GRAPHITE
MP-1	ZINC OR EQUIVALENT METAL PANEL; COLOR: CHARCOAL
MP-2	COPPER OR EQUIVALENT METAL PANEL; COLOR: COPPER
S-1	T&G CEDAR SOFFIT C/W PRE-FIN. METAL VENT STRIPS
S-2	HARDIE SOFFIT PANEL C/W VENT STRIP BY GENTEG; COLOR: GRAPHITE (TBD)
WS-1	PRE-FIN. HORIZ. WOOD (5"); SIDING BY CAPE COD; COLOR: CHARCOAL (TBD)
WS-2	PRE-FIN. HORIZ. WOOD (5"); SIDING BY CAPE COD; COLOR: 'LIGHT' (TBD)
WS-3	PRE-FIN. VERT. WOOD (5"); SIDING BY CAPE COD; COLOR: 'LIGHT' (TBD)
CB-1	CEMENT BOARD PANELS
PC#	PRECAST CONCRETE (PROFILE #)
CP	CEMENT PARPING
GR	PRE-FIN. PRE-ENG. ALUM. & GLASS GUARDRAIL
RV	ROOF VENT
AS	ASPHALT SHINGLES
SCOL	SCONCE LIGHTING

PROJECT CONSULTANTS

DEVELOPER / OWNER

EQ HOMES INC.
THE REGIONAL GROUP
1751 WOODWARD DRIVE - 2ND FLOOR
OTTAWA, ON K2M 3K7
PHONE: (613) 230-2100

ARCHITECT

HOBIN ARCHITECTURE INC.
63 PAMILLA STREET
OTTAWA, ON K2M 3K7
CONTACT: MARK THURBERG
PHONE: (613) 230-1200 x 105

PLANNING

NOVATECH
240 MICHAEL CONPLAND DRIVE SUITE 200
OTTAWA, ON K2M 1P6
CONTACT: ROBERT TRAN
PHONE: (613) 254-4643 x 212

LANDSCAPE

NOVATECH
240 MICHAEL CONPLAND DRIVE SUITE 200
OTTAWA, ON K2M 1P6
CONTACT: RYAN JAMES
PHONE: (613) 254-4643 x 222

TRAFFIC

NOVATECH
240 MICHAEL CONPLAND DRIVE SUITE 200
OTTAWA, ON K2M 1P6
CONTACT: BRAD BYVELDS
PHONE: (613) 254-4643 x 206

CIVIL

NOVATECH
240 MICHAEL CONPLAND DRIVE SUITE 200
OTTAWA, ON K2M 1P6
CONTACT: TREVOR MCKAY
PHONE: (613) 254-4643 x 201

SURVEYOR

ANIS, O'SULLIVAN, VOLLEBECK LTD.
14 GONGORSE GATE SUITE 500
OTTAWA, ON K2E 1S6
CONTACT: ANDREA BELL
PHONE: (613) 721-4352 x 226

GEOTECHNICAL

PATERSON GROUP INC.
11 AURORA DRIVE
OTTAWA, ON K2E 1T3
CONTACT: SCOTT S. DENNIS
PHONE: (613) 226-1351

no.	date	revision
2	2024-11-29	REISSUED FOR ZBA + SPC
1	2024-10-11	ISSUED FOR SPC

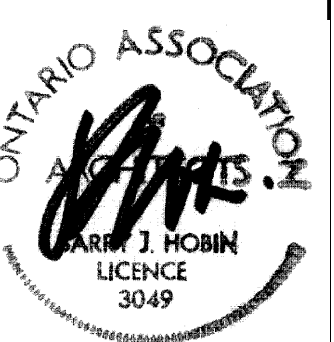
It is the responsibility of the appropriate contractor to check and verify all dimensions on site and report all errors and/or omissions to the architect.

All contractors must comply with all pertinent codes and by-laws.

Do not scale drawings.

This drawing may not be used for construction until signed.

Copyright reserved.



Hobin Architecture Incorporated
63 Pamilla Street
Ottawa, Ontario
Canada K1S 3K7
T: 613-238-7200
F: 613-235-2005
E: mail@hobinarc.com
hobinarc.com



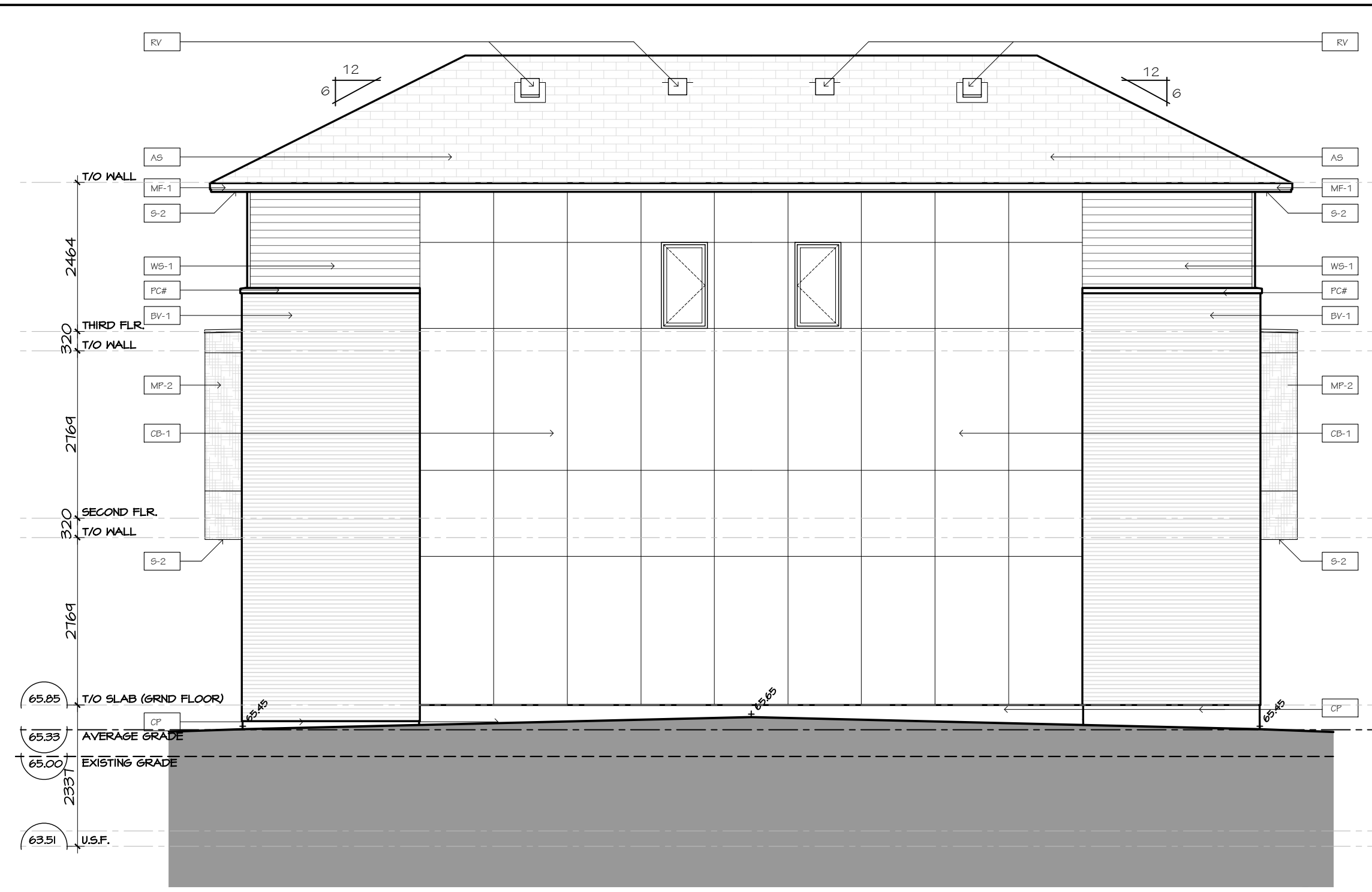
PROJECT/LOCATION:
FORECOURT TOWNHOMES
175 MAIN STREET - GREYSTONE

DRAWING TITLE:
ELEVATIONS - BLOCK T3
BLOCK 29
295 DESCHÂTELETS AVE.

DRAWN BY: DATE: SCALE:
24/09/23 1:75

PROJECT:
DRAWING NO.:
A2.03

REVISION NO.:
City Plan No.: #19191



1 BLOCK T5 - NORTH-WEST ELEVATION
A2.05 SCALE 1:75

2 BLOCK T5 - SOUTH-EAST ELEVATION
A2.05 SCALE 1:75



3 BLOCK T5 - SOUTH-WEST ELEVATION
A2.05 SCALE 1:75

4 BLOCK T5 - NORTH-EAST ELEVATION
A2.05 SCALE 1:75



FINISH MATERIAL LEGEND:

BV-1	BRICK VENEER; COLOR TBD
SV-1	STONE VENEER; ARRISCRAFT RENAISSANCE; COLOR: TBD
MF-1	PRE-FIN. METAL FLASHING; COLOR: GRAPHITE
MP-1	ZINC OR EQUIVALENT METAL PANEL; COLOR: CHARCOAL
MP-2	COPPER OR EQUIVALENT METAL PANEL; COLOR: COPPER
S-1	T&G CEDAR SOFFIT C/W PRE-FIN. METAL VENT STRIPS
S-2	HARDIE SOFFIT PANEL C/W VENT STRIP BY GENTEG; COLOR: GRAPHITE (TBD)
WS-1	PRE-FIN. HORIZ. WOOD (5"); SIDING BY CAPE COD; COLOR: CHARCOAL (TBD)
WS-2	PRE-FIN. HORIZ. WOOD (5"); SIDING BY CAPE COD; COLOR: 'LIGHT' (TBD)
WS-3	PRE-FIN. VERT. WOOD (5"); SIDING BY CAPE COD; COLOR: 'LIGHT' (TBD)
CB-1	CEMENT BOARD PANELS
PC#	PRECAST CONCRETE (PROFILE #)
CP	CEMENT PARPING
GR	PRE-FIN. PRE-ENG. ALUM. & GLASS GUARDRAIL
RY	ROOF VENT
AS	ASPHALT SHINGLES
SCGN	SCENCE LIGHTING

PROJECT CONSULTANTS

DEVELOPER / OWNER

EQ HOMES INC.
THE REGIONAL GROUP
1751 WOODWARD DRIVE - 2ND FLOOR
OTTAWA, ON K2M 3K7
PHONE: (613) 230-2100

ARCHITECT

HOBIN ARCHITECTURE INC.
63 PAMILLA STREET
OTTAWA, ON K2M 3K7
CONTACT: MARK THIVERSE
PHONE: (613) 230-1200 x 105

PLANNING

NOVATECH
240 MICHAEL CONFLAND DRIVE SUITE 200
OTTAWA, ON K2M 1P6
CONTACT: ROBERT TRAN
PHONE: (613) 254-4643 x 212

LANDSCAPE

NOVATECH
240 MICHAEL CONFLAND DRIVE SUITE 200
OTTAWA, ON K2M 1P6
CONTACT: RYAN JAMES
PHONE: (613) 254-4643 x 222

TRAFFIC

NOVATECH
240 MICHAEL CONFLAND DRIVE SUITE 200
OTTAWA, ON K2M 1P6
CONTACT: BRAD BYVELDIS
PHONE: (613) 254-4643 x 206

CIVIL

NOVATECH
240 MICHAEL CONFLAND DRIVE SUITE 200
OTTAWA, ON K2M 1P6
CONTACT: TREVOR MCKAY
PHONE: (613) 254-4643 x 201

SURVEYOR

ANIS, O'SULLIVAN, VOLLEBECK LTD.
14 GONGORSE SAITE SUITE 500
OTTAWA, ON K2E 1S6
CONTACT: ANDREA BELL
PHONE: (613) 721-4352 x 226

GEOTECHNICAL

PATERSON GROUP INC.
11 AURIGA DRIVE
OTTAWA, ON K2E 1T8
CONTACT: SCOTT S. DENNIS
PHONE: (613) 226-1351

no.	date	revision
2	2024-11-29	REISSUED FOR ZBA + SPC
1	2024-10-11	ISSUED FOR SPC

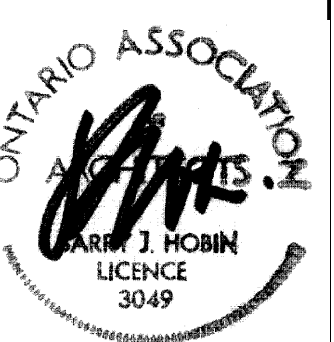
It is the responsibility of the appropriate contractor to check and verify all dimensions on site and report all errors and/or omissions to the architect.

All contractors must comply with all pertinent codes and by-laws.

Do not scale drawings.

This drawing may not be used for construction until signed.

Copyright reserved.



Hobin Architecture Incorporated
63 Pamilla Street
Ottawa, Ontario
Canada K1S 3K7
T: 613-238-7200
F: 613-235-2005
E: mail@hobinarc.com
hobinarc.com



PROJECT/LOCATION:

FORECOURT TOWNHOMES

175 MAIN STREET - GREYSTONE

DRAWING TITLE:

ELEVATIONS - BLOCK T5
BLOCK 29
295 DESCHÂTELETS AVE.

DRAWN BY:

DATE:
24/09/23

SCALE:

1:75

PROJECT:

DRAWING NO.:

A2.05

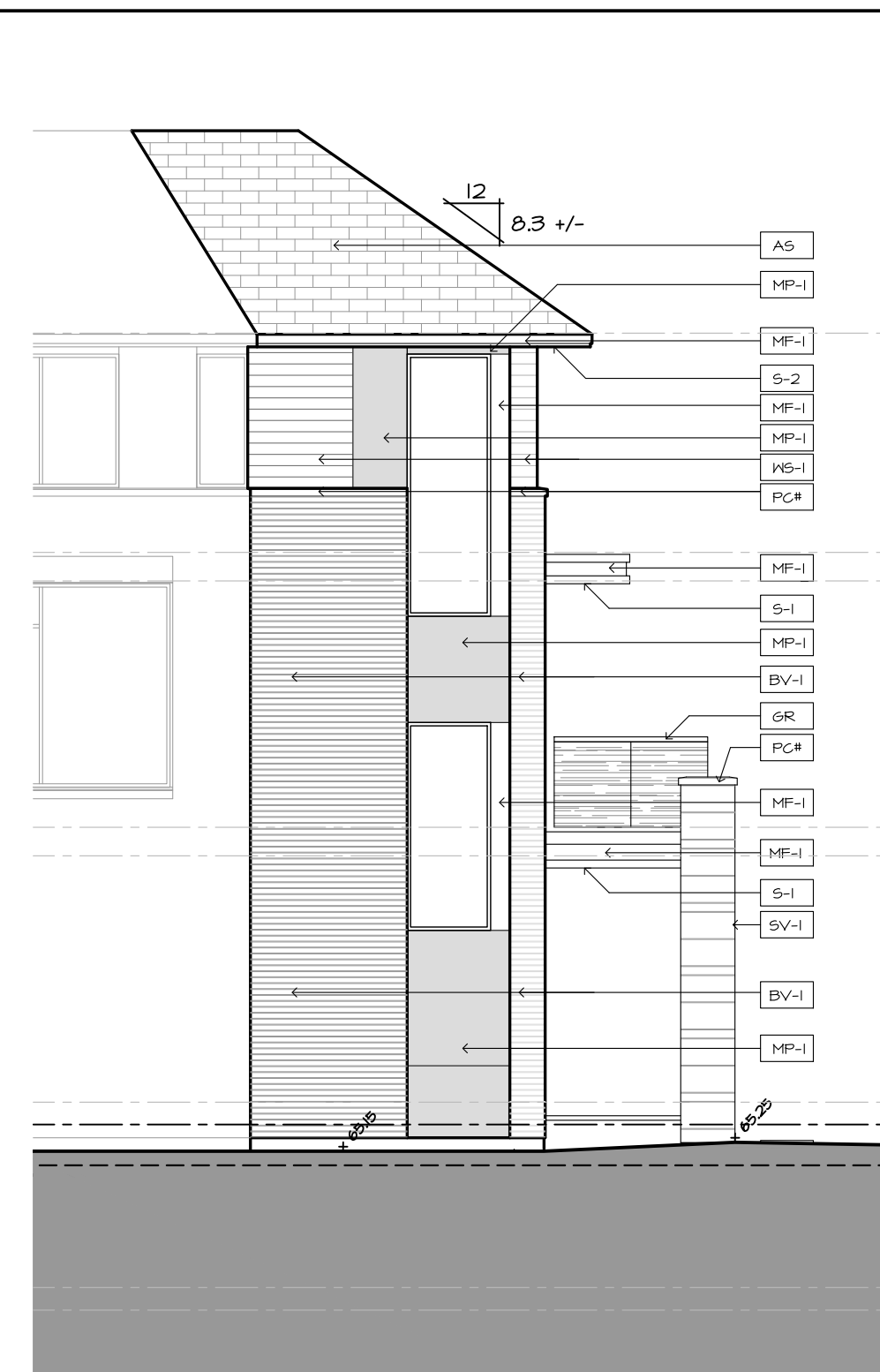
REVISION NO.:

City Plan No.: #19191

File Number: D07-12-24-0130



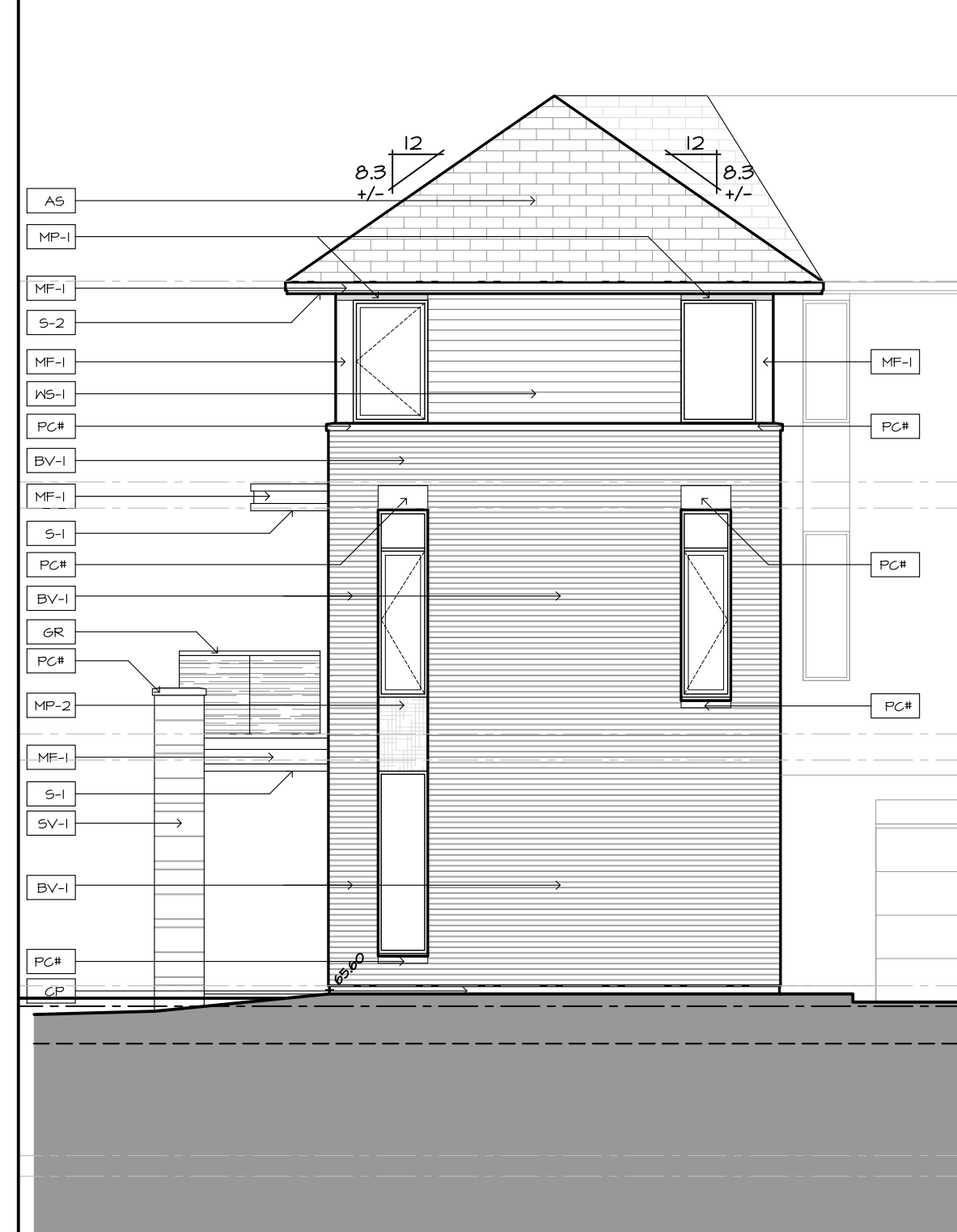
1 BLOCK T6 - SOUTH-EAST ELEVATION
A-2.61 SCALE 1:75



2 BLOCK T6 - SOUTH ELEVATION
A-2.61 SCALE 1:75



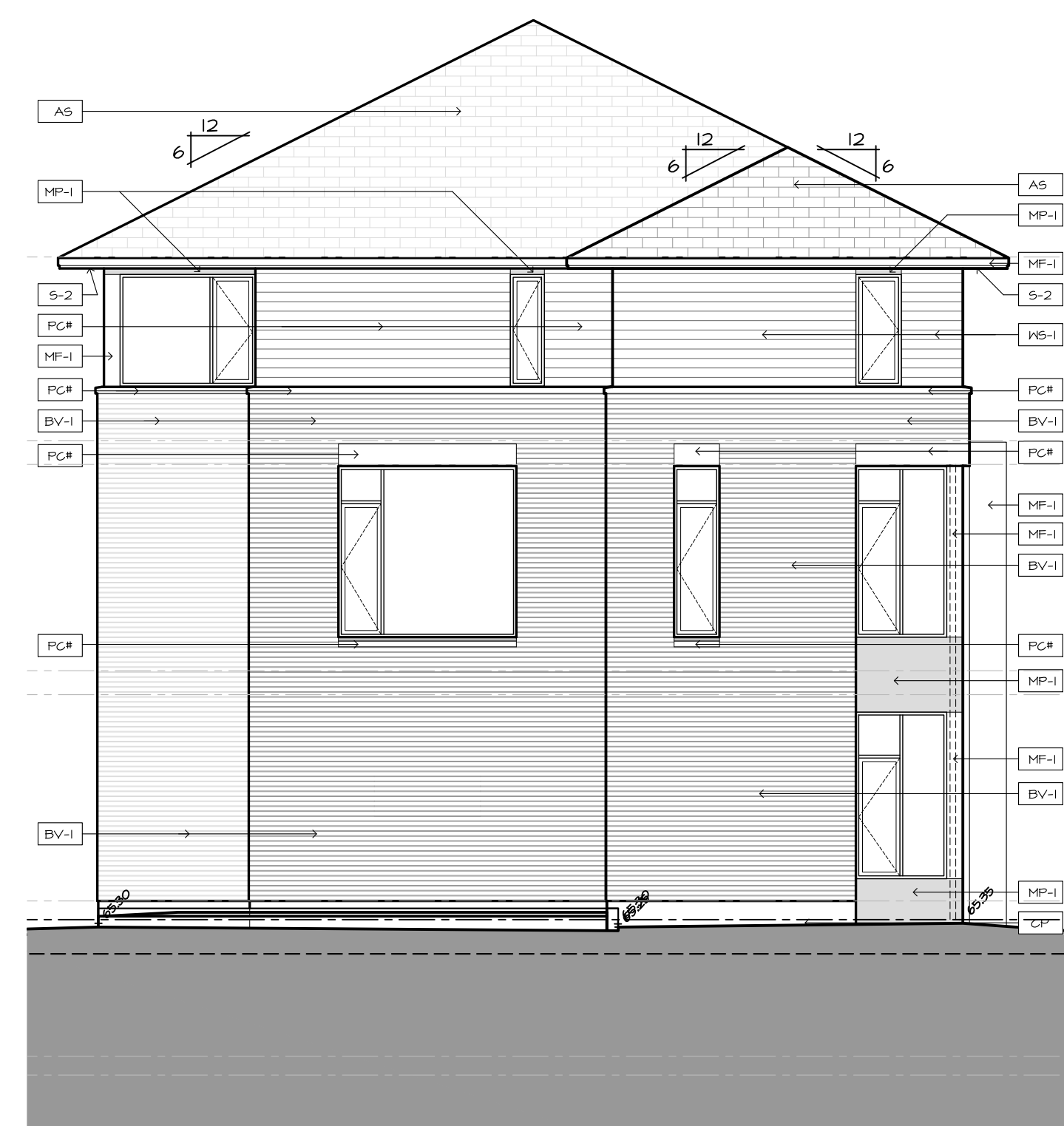
3 BLOCK T6 - EAST ELEVATION
A-2.61 SCALE 1:75



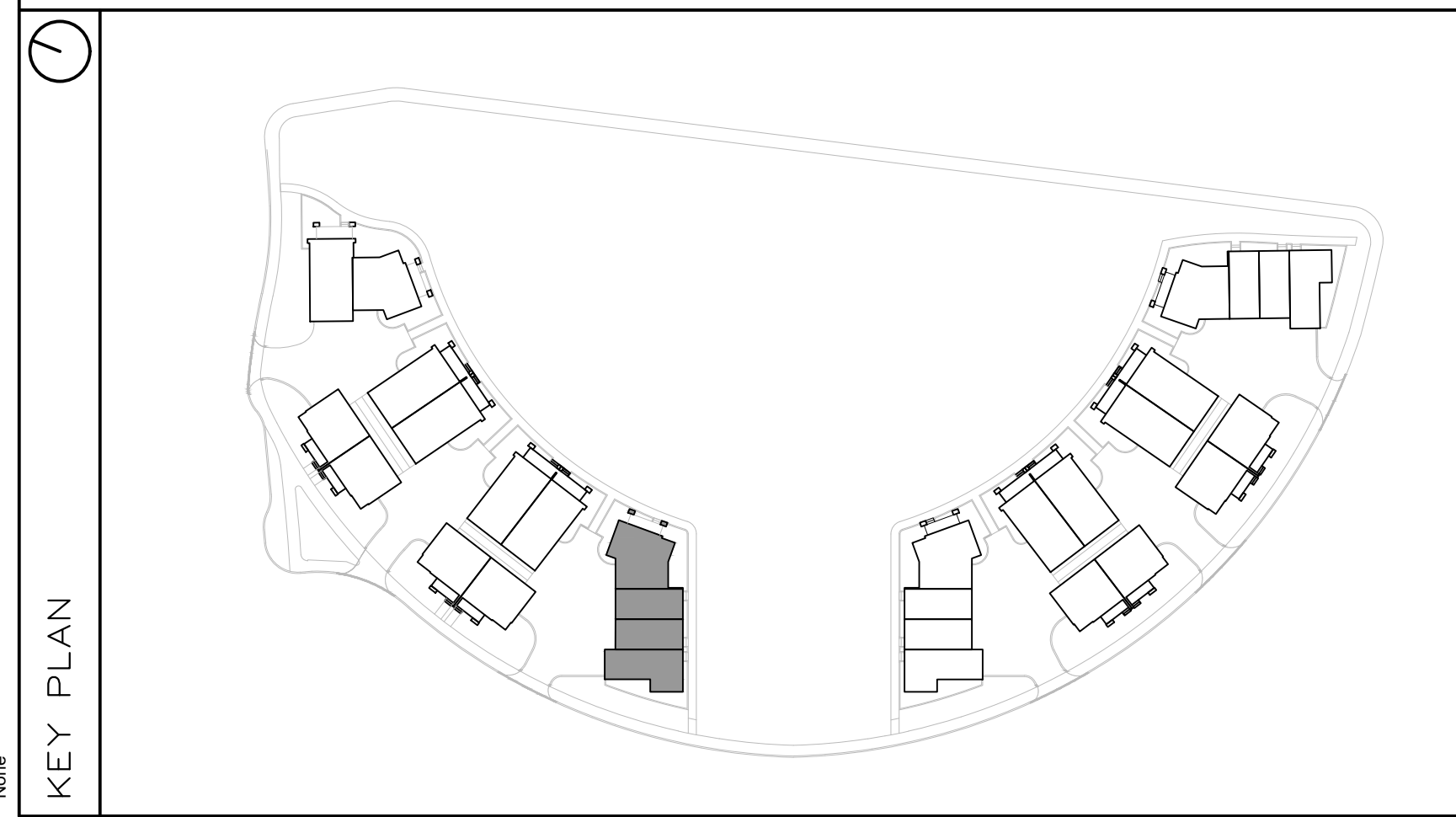
4 BLOCK T6 - NORTH ELEVATION
A-2.61 SCALE 1:75



5 BLOCK T6 - NORTH-WEST ELEVATION
A-2.61 SCALE 1:75



6 BLOCK T6 - SOUTH-WEST ELEVATION
A-2.61 SCALE 1:75



FINISH MATERIAL LEGEND:

BV-1	BRICK VENEER; COLOR TBD
SV-1	STONE VENEER; ARRISCRAPT RENAISSANCE; COLOR: TBD
MF-1	PRE-FIN. METAL FLASHING; COLOR: GRAPHITE
MP-1	ZINC OR EQUIVALENT METAL PANEL; COLOR: CHARCOAL
MP-2	COPPER OR EQUIVALENT METAL PANEL; COLOR: COPPER
S-1	T&G CEDAR SOFFIT C/W PRE-FIN. METAL VENT STRIPS
S-2	HARDIE SOFFIT PANEL C/W VENT STRIP BY GENTEG; COLOR: GRAPHITE (TBD)
WS-1	PRE-FIN. HORIZ. WOOD (5"); SIDING BY CAPE COD; COLOR: CHARCOAL (TBD)
WS-2	PRE-FIN. HORIZ. WOOD (5"); SIDING BY CAPE COD; COLOR: 'LIGHT' (TBD)
WS-3	PRE-FIN. VERT. WOOD (5"); SIDING BY CAPE COD; COLOR: 'LIGHT' (TBD)
CB-1	CEMENT BOARD PANELS
PC#	PRECAST CONCRETE (PROFILE #)
CP	CEMENT PAVING
GR	PRE-FIN. PRE-ENG. ALUM. & GLASS GUARDRAIL
RV	ROOF VENT
AS	ASPHALT SHINGLES
SCON	SCONCE LIGHTING

PROJECT CONSULTANTS

DEVELOPER / OWNER

EQ HOMES INC.
THE REGIONAL GROUP
1171 WOODWARD DRIVE - 2ND FLOOR
OTTAWA, ON K2C 0P6
PHONE: (613) 230-2100

ARCHITECT

HOBIN ARCHITECTURE INC.
63 PAMILLA STREET
OTTAWA, ON K2H 3K7
CONTACT: MARK THIVERSE
PHONE: (613) 254-4643 x 105

PLANNING

NOVATECH
240 MICHAEL CONFLAND DRIVE SUITE 200
OTTAWA, ON K2M 1P6
CONTACT: ROBERT TRAN
PHONE: (613) 254-4643 x 212

LANDSCAPE

NOVATECH
240 MICHAEL CONFLAND DRIVE SUITE 200
OTTAWA, ON K2M 1P6
CONTACT: RYAN JAMES
PHONE: (613) 254-4643 x 222

TRAFFIC

NOVATECH
240 MICHAEL CONFLAND DRIVE SUITE 200
OTTAWA, ON K2M 1P6
CONTACT: BRAD BYVELDIS
PHONE: (613) 254-4643 x 206

CIVIL

NOVATECH
240 MICHAEL CONFLAND DRIVE SUITE 200
OTTAWA, ON K2M 1P6
CONTACT: TREVOR MCKAY
PHONE: (613) 254-4643 x 201

SURVEYOR

ANNIS, O'SULLIVAN, VOLLEBECK LTD.
14 GONCOURSE SAITE SUITE 500
OTTAWA, ON K2E 1S6
CONTACT: ANDREA BELL
PHONE: (613) 721-4952 x 206

GEOTECHNICAL

PATERSON GROUP INC.
11 AURIGA DRIVE
OTTAWA, ON K2E 1T3
CONTACT: SCOTT S. DENNIS
PHONE: (613) 226-1351

no.	date	revision
2	2024-11-29	REISSUED FOR ZBA + SPC
1	2024-10-11	ISSUED FOR SPC

It is the responsibility of the appropriate contractor to check and verify all dimensions on site and report all errors and/or omissions to the architect.

All contractors must comply with all pertinent codes and by-laws.

Do not scale drawings.

This drawing may not be used for construction until signed.

Copyright reserved.



Hobin Architecture Incorporated
63 Pamilla Street
Ottawa, Ontario
Canada K1S 3K7
T: 613-238-7200
F: 613-235-2005
E: mail@hobinarc.com
hobinarc.com

PROJECT/LOCATION:
FORECOURT TOWNHOMES
175 MAIN STREET - GREYSTONE

DRAWING TITLE:
ELEVATIONS - BLOCK T6
BLOCK 29
295 DESCHÂTELETS AVE.

DRAWN BY: DATE: SCALE:
24/09/23 1:75

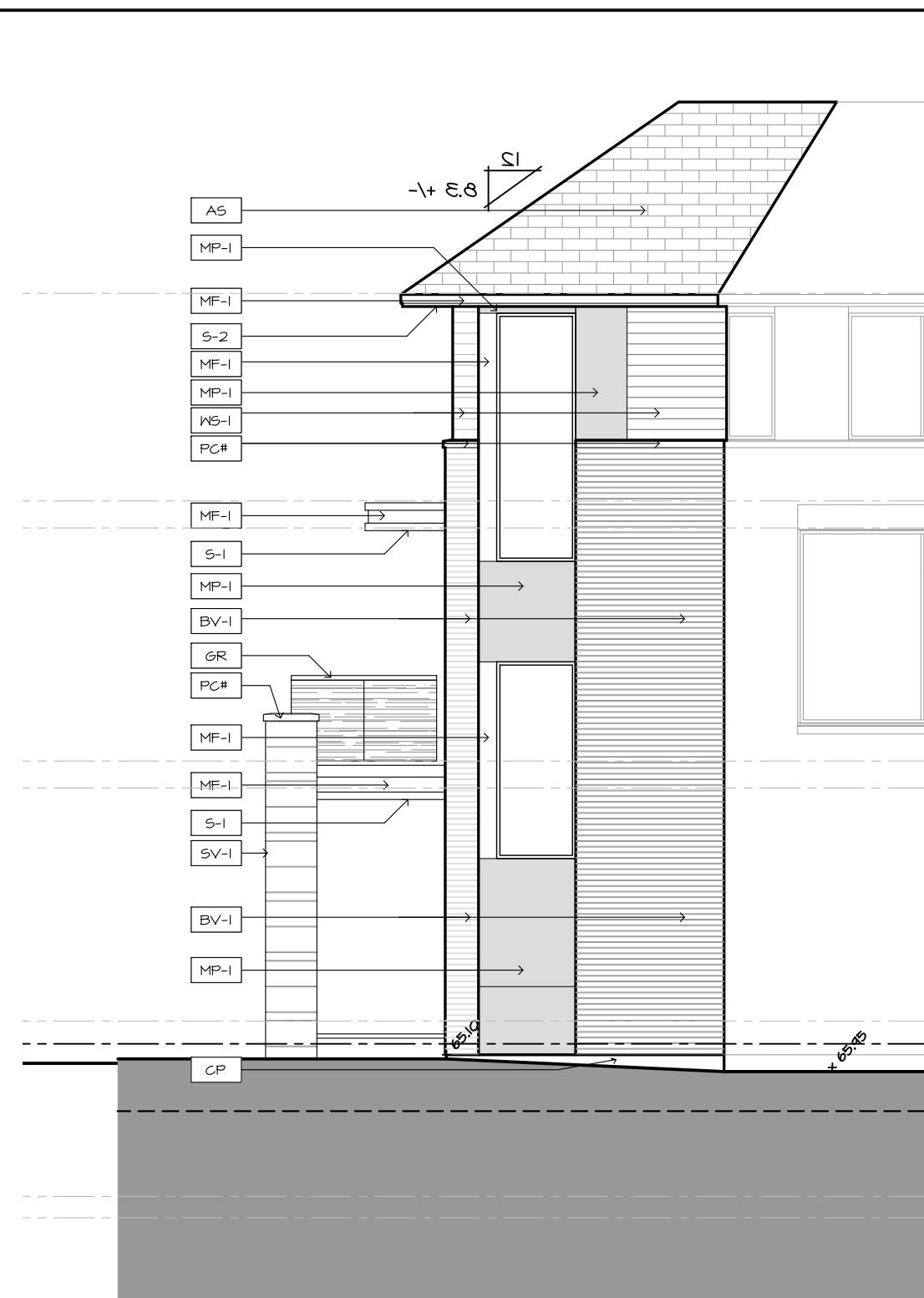
PROJECT:
DRAWING NO.:

A2.06

REVISION NO.:
City Plan No.: #19191
File Number: D07-12-24-0130



1 | BLOCK T7 - NORTH ELEVATION
A-2.7 | SCALE 1:75



2 | BLOCK T7 - NORTH-WEST ELEVATION
A-2.7 | SCALE 1:75



3 | BLOCK T7 - NORTH-EAST ELEVATION
A-2.7 | SCALE 1:75



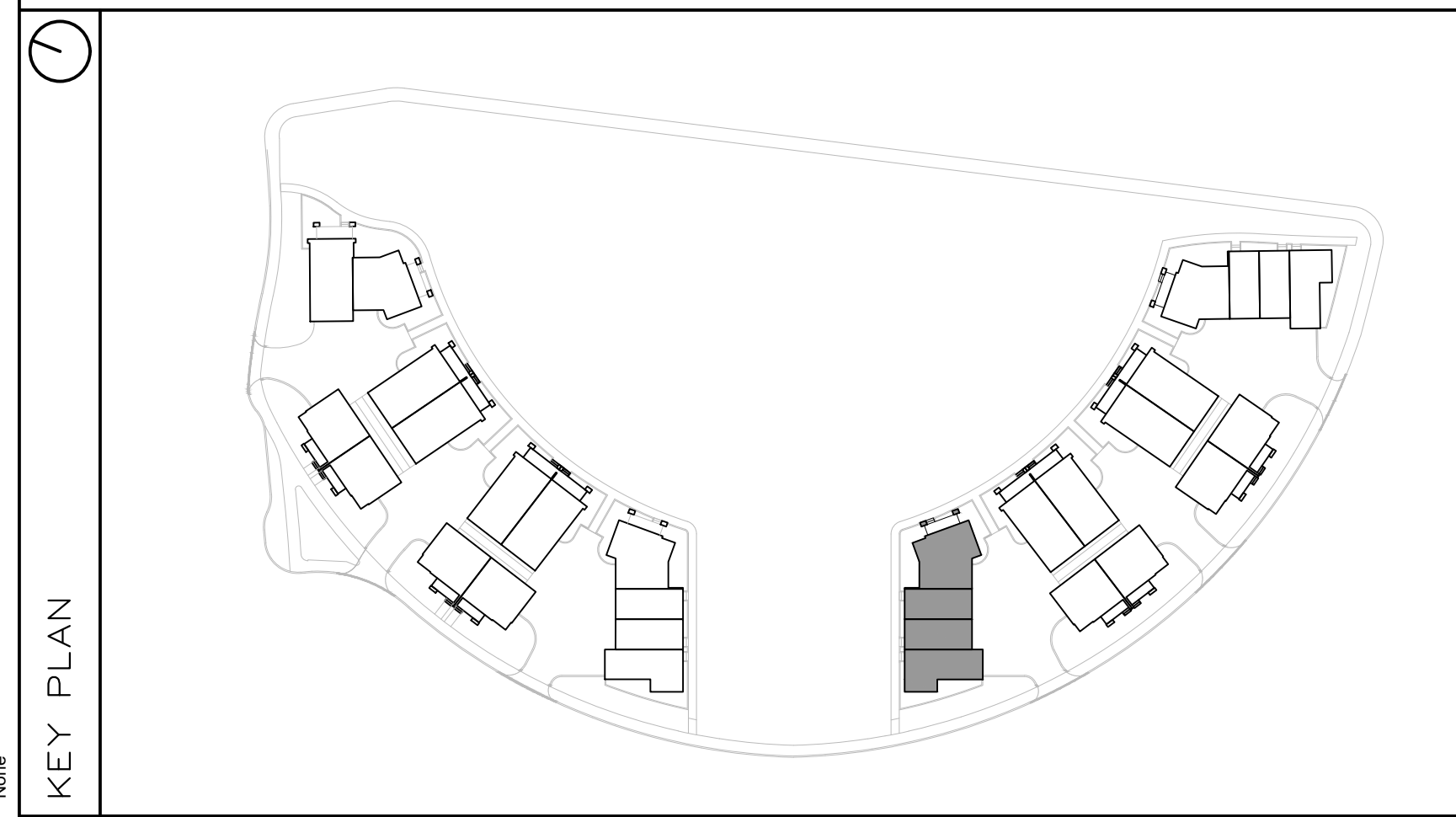
4 | BLOCK T7 - SOUTH EAST ELEVATION
A-2.7 | SCALE 1:75



5 | BLOCK T7 - SOUTH ELEVATION
A-2.7 | SCALE 1:75



6 | BLOCK T7 - WEST ELEVATION
A-2.7 | SCALE 1:75



FINISH MATERIAL LEGEND:

BV-1	BRICK VENEER; COLOR TBD
SV-1	STONE VENEER; ARRISCRAPT RENAISSANCE; COLOR: TBD
MF-1	PRE-FIN. METAL FLASHING; COLOR: GRAPHITE
MP-1	ZINC OR EQUIVALENT METAL PANEL; COLOR: CHARCOAL
MP-2	COPPER OR EQUIVALENT METAL PANEL; COLOR: COPPER
S-1	T&G CEDAR SOFFIT C/W PRE-FIN. METAL VENT STRIPS
S-2	HARDIE SOFFIT PANEL C/W VENT STRIP BY GENTEG; COLOR: GRAPHITE (TBD)
WS-1	PRE-FIN. HORIZ. WOOD (5"); SIDING BY CAPE COD; COLOR: CHARCOAL (TBD)
WS-2	PRE-FIN. HORIZ. WOOD (5"); SIDING BY CAPE COD; COLOR: 'LIGHT' (TBD)
WS-3	PRE-FIN. VERT. WOOD (5"); SIDING BY CAPE COD; COLOR: 'LIGHT' (TBD)
CB-1	CEMENT BOARD PANELS
PC#	PRECAST CONCRETE (PROFILE #)
CP	CEMENT PAVING
GR	PRE-FIN. PRE-ENG. ALUM. & GLASS GUARDRAIL
RV	ROOF VENT
AS	ASPHALT SHINGLES
SCON	SCONCE LIGHTING

PROJECT CONSULTANTS

DEVELOPER / OWNER

EQ HOMES INC.
THE REGIONAL GROUP
1751 WOODWARD DRIVE - 2ND FLOOR
OTTAWA, ON K2M 3K7
PHONE: (613) 230-2100

ARCHITECT

HOBIN ARCHITECTURE INC.
63 PAMILLA STREET
OTTAWA, ON K1S 3K7
CONTACT: MARK THYRBERG
PHONE: (613) 230-1200 x 105

PLANNING

NOVATECH
240 MICHAEL CONFLAND DRIVE SUITE 200
OTTAWA, ON K2M 1P6
CONTACT: ROBERT TRAN
PHONE: (613) 254-6643 x 212

LANDSCAPE

NOVATECH
240 MICHAEL CONFLAND DRIVE SUITE 200
OTTAWA, ON K2M 1P6
CONTACT: RYAN JAMES
PHONE: (613) 254-6643 x 222

TRAFFIC

NOVATECH
240 MICHAEL CONFLAND DRIVE SUITE 200
OTTAWA, ON K2M 1P6
CONTACT: BRAD BYVELDIS
PHONE: (613) 254-6643 x 206

CIVIL

NOVATECH
240 MICHAEL CONFLAND DRIVE SUITE 200
OTTAWA, ON K2M 1P6
CONTACT: TREVOR MCKAY
PHONE: (613) 254-6643 x 201

SURVEYOR

ANNIS O'SULLIVAN VOLLEBECK LTD.
14 GONCOURSE SUITE 500
OTTAWA, ON K2E 1S6
CONTACT: ANDREA BIELL
PHONE: (613) 727-4392 x 201

GEOTECHNICAL

PATERSON GROUP INC.
11 AURORA DRIVE
OTTAWA, ON K2E 1T3
CONTACT: SCOTT S. DENNIS
PHONE: (613) 226-1351

2	2024-11-29	REISSUED FOR ZBA + SPC
1	2024-10-11	ISSUED FOR SPC
no.	date	revision
It is the responsibility of the appropriate contractor to check and verify all dimensions on site and report all errors and/or omissions to the architect.		
All contractors must comply with all pertinent codes and by-laws.		
Do not scale drawings.		
This drawing may not be used for construction until signed.		
Copyright reserved.		

Hobin Architecture Incorporated

63 Pamilla Street
Ottawa, Ontario
Canada K1S 3K7

T: 613-238-7200
F: 613-235-2005
E: mail@hobinarc.com

hobinarc.com



PROJECT/LOCATION:

FORECOURT TOWNHOMES
175 MAIN STREET - GREYSTONE

DRAWING TITLE:

ELEVATIONS - BLOCK T7
BLOCK 28
295 DESCHÂTELETS AVE.

DRAWN BY:

DATE:
24/09/23

SCALE:

1:75

PROJECT:

DRAWING NO.:

A2.07

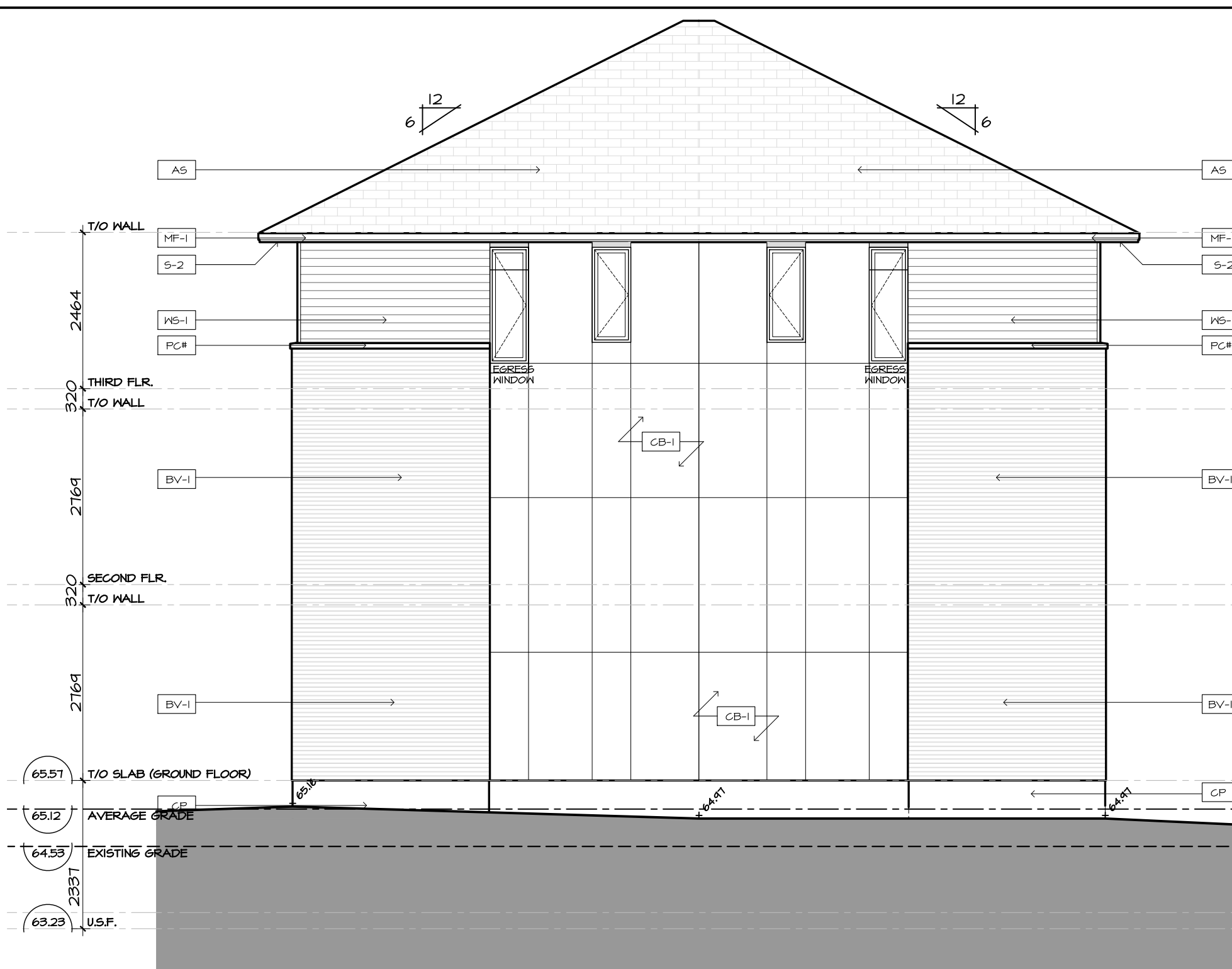
REVISION NO.:

City Plan No.: #19191



1 BLOCK T8 – NORTH-EAST ELEVATION

A2.08 SCALE 1:75



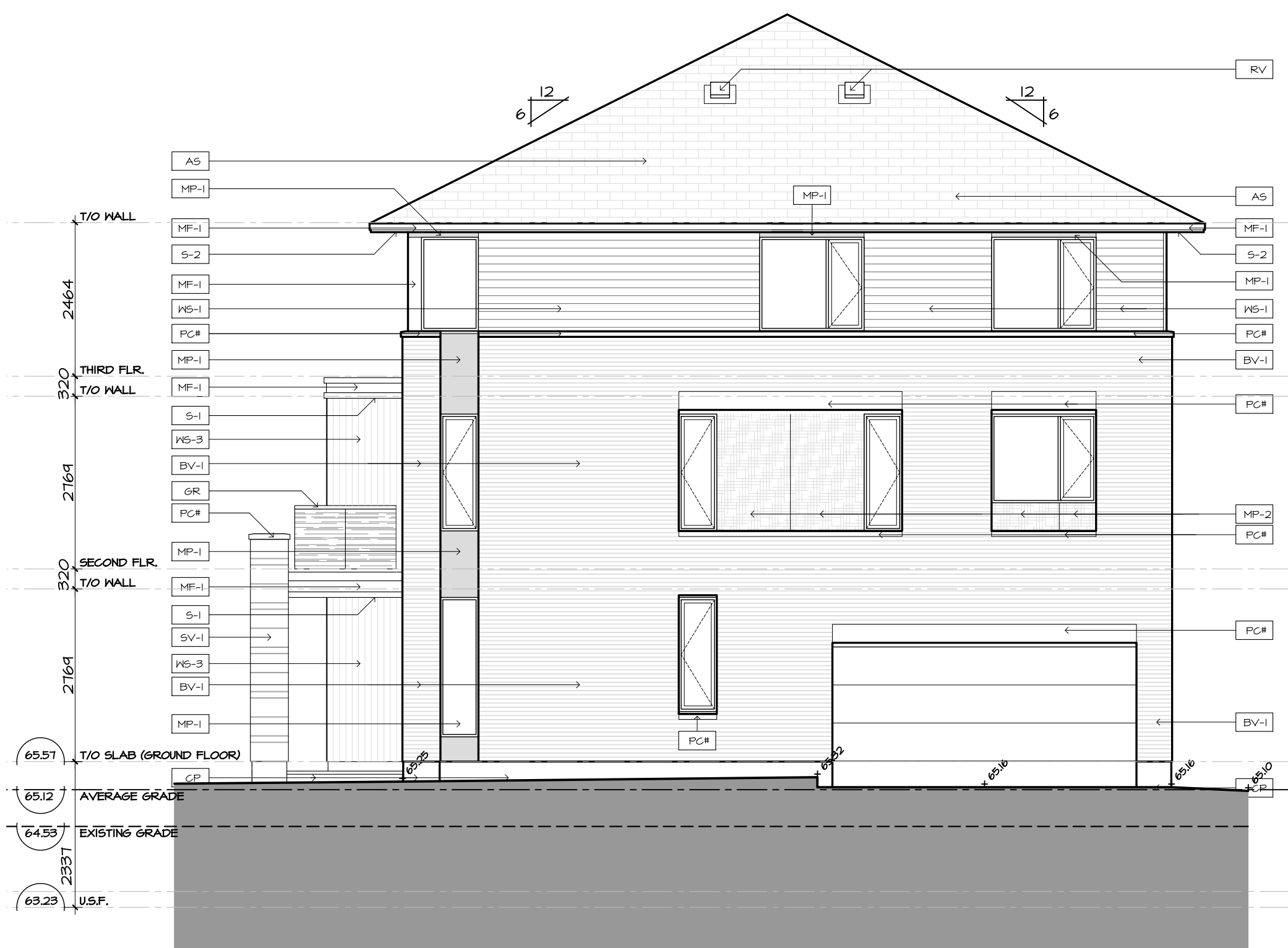
2 BLOCK T8 – SOUTH-WEST ELEVATION

A2.08 SCALE 1:75



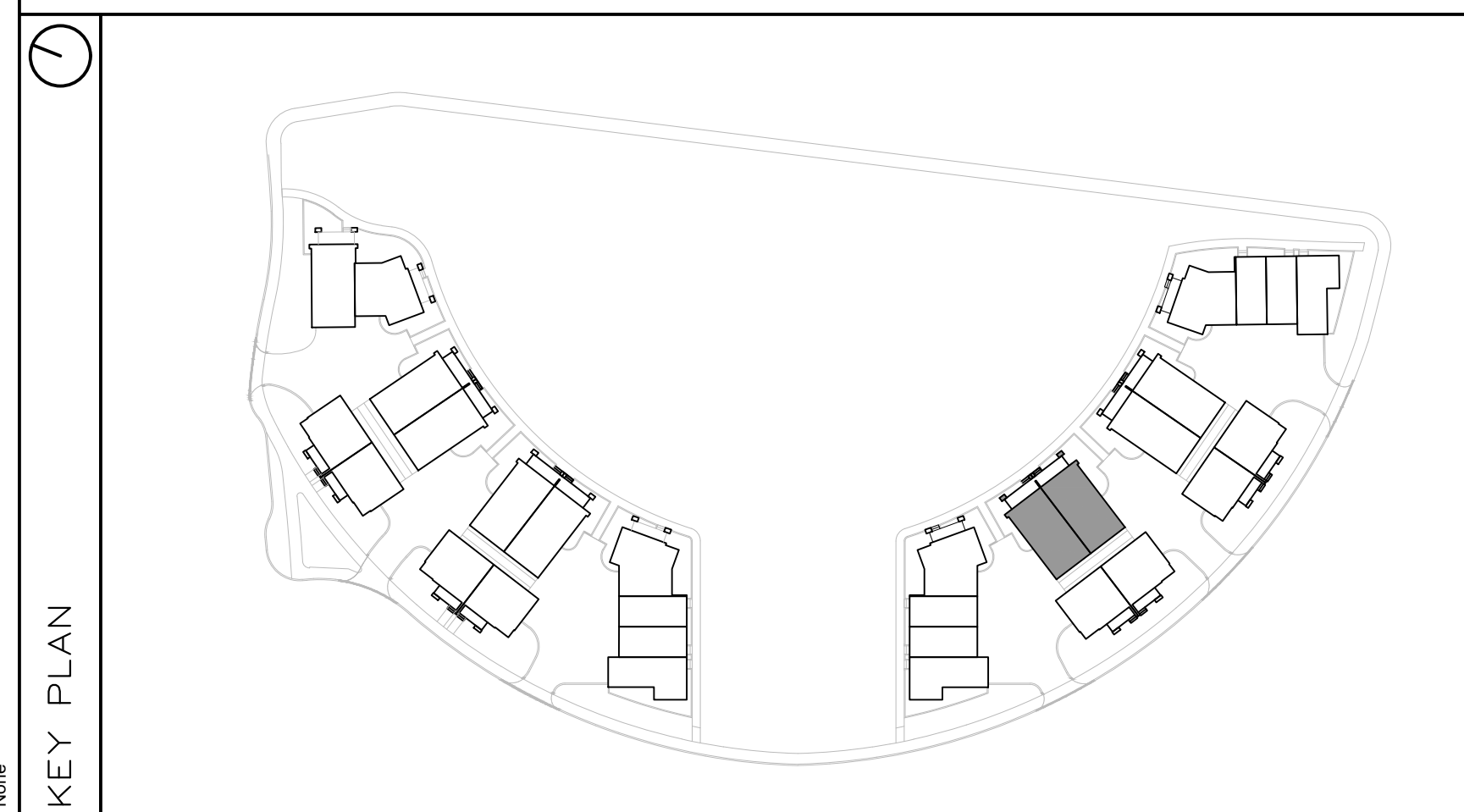
3 BLOCK T8 – SOUTH-EAST ELEVATION

A2.08 SCALE 1:75



4 BLOCK T8 – NORTH-WEST ELEVATION

A2.08 SCALE 1:75



FINISH MATERIAL LEGEND:

BV-1	BRICK VENEER; COLOR TBD
SV-1	STONE VENEER; ARRISCRAPT RENAISSANCE; COLOR: TBD
MF-1	PRE-FIN. METAL FLASHING; COLOR: GRAPHITE
MP-1	ZINC OR EQUIVALENT METAL PANEL; COLOR: CHARCOAL
MP-2	COPPER OR EQUIVALENT METAL PANEL; COLOR: COPPER
S-1	T&G CEDAR SOFFIT C/W PRE-FIN. METAL VENT STRIPS
S-2	HARDIE SOFFIT PANEL C/W VENT STRIP BY GENTEG; COLOR: GRAPHITE (TBD)
WS-1	PRE-FIN. HORIZ. WOOD (5"); SIDING BY CAPE COD; COLOR: CHARCOAL (TBD)
WS-2	PRE-FIN. HORIZ. WOOD (5"); SIDING BY CAPE COD; COLOR: 'LIGHT' (TBD)
WS-3	PRE-FIN. VERT. WOOD (5"); SIDING BY CAPE COD; COLOR: 'LIGHT' (TBD)
CB-1	CEMENT BOARD PANELS
PC#	PRECAST CONCRETE (PROFILE #)
CP	CEMENT PAVING
GR	PRE-FIN. PRE-ENG. ALUM. & GLASS GUARDRAIL
RV	ROOF VENT
AS	ASPHALT SHINGLES
SCON	SCONCE LIGHTING

PROJECT CONSULTANTS

DEVELOPER / OWNER

EQ HOMES INC.
THE REGIONAL GROUP
1751 WOODWARD DRIVE - 2ND FLOOR
OTTAWA, ON K2C 0P6
PHONE: (613) 230-2100

ARCHITECT

HOBIN ARCHITECTURE INC.
63 PAMILLA STREET
OTTAWA, ON K2H 3K7
CONTACT: MARK THIVERSE
PHONE: (613) 230-1200 x 105

PLANNING

NOVATECH
240 MICHAEL CONFLAND DRIVE SUITE 200
OTTAWA, ON K2H 1P6
CONTACT: ROBERT TRAN
PHONE: (613) 254-4643 x 212

LANDSCAPE

NOVATECH
240 MICHAEL CONFLAND DRIVE SUITE 200
OTTAWA, ON K2H 1P6
CONTACT: RYAN JAMES
PHONE: (613) 254-4643 x 222

TRAFFIC

NOVATECH
240 MICHAEL CONFLAND DRIVE SUITE 200
OTTAWA, ON K2H 1P6
CONTACT: BRAD BYVELDIS
PHONE: (613) 254-4643 x 206

CIVIL

NOVATECH
240 MICHAEL CONFLAND DRIVE SUITE 200
OTTAWA, ON K2H 1P6
CONTACT: TREVOR MCKAY
PHONE: (613) 254-4643 x 201

SURVEYOR

ANNIS, O'SULLIVAN, VOLLEBECKE LTD.
14 GONCOURSE SUITE SUITE 500
OTTAWA, ON K2E 1S6
CONTACT: ANDREA BIELL
PHONE: (613) 727-4502 x 226

GEOTECHNICAL

PATERSON GROUP INC.
11 AURIGA DRIVE
OTTAWA, ON K2E 1T3
CONTACT: SCOTT S. DENNIS
PHONE: (613) 226-1351

no.	date	revision
2	2024-11-29	REISSUED FOR ZBA + SPC
1	2024-10-11	ISSUED FOR SPC

It is the responsibility of the appropriate contractor to check and verify all dimensions on site and report all errors and/or omissions to the architect.

All contractors must comply with all pertinent codes and by-laws.

Do not scale drawings.

This drawing may not be used for construction until signed.

Copyright reserved.



Hobin Architecture Incorporated
63 Pamilla Street
Ottawa, Ontario
Canada K1S 3K7
T: 613-238-7200
F: 613-235-2005
E: mail@hobinarc.com
hobinarc.com

PROJECT/LOCATION:
FORECOURT TOWNHOMES
175 MAIN STREET - GREYSTONE

DRAWING TITLE:
ELEVATIONS - BLOCK T8
BLOCK 28
295 DESCHÂTELETS AVE.

DRAWN BY: DATE: SCALE:
24/09/23 1:75

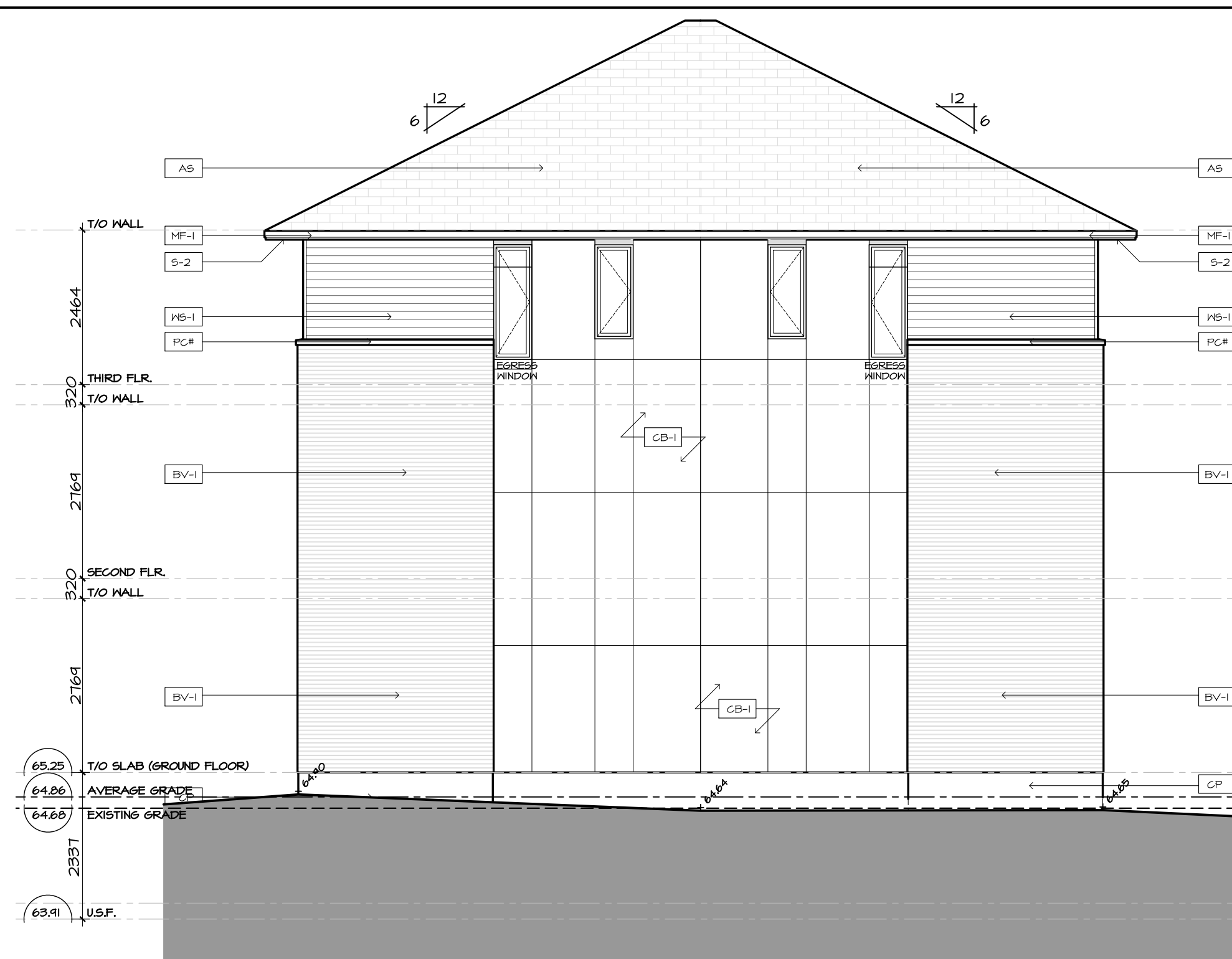
PROJECT:
DRAWING NO.:

A2.08

REVISION NO.:



1 | BLOCK T10 – NORTH ELEVATION
A2.10 | SCALE 1:75



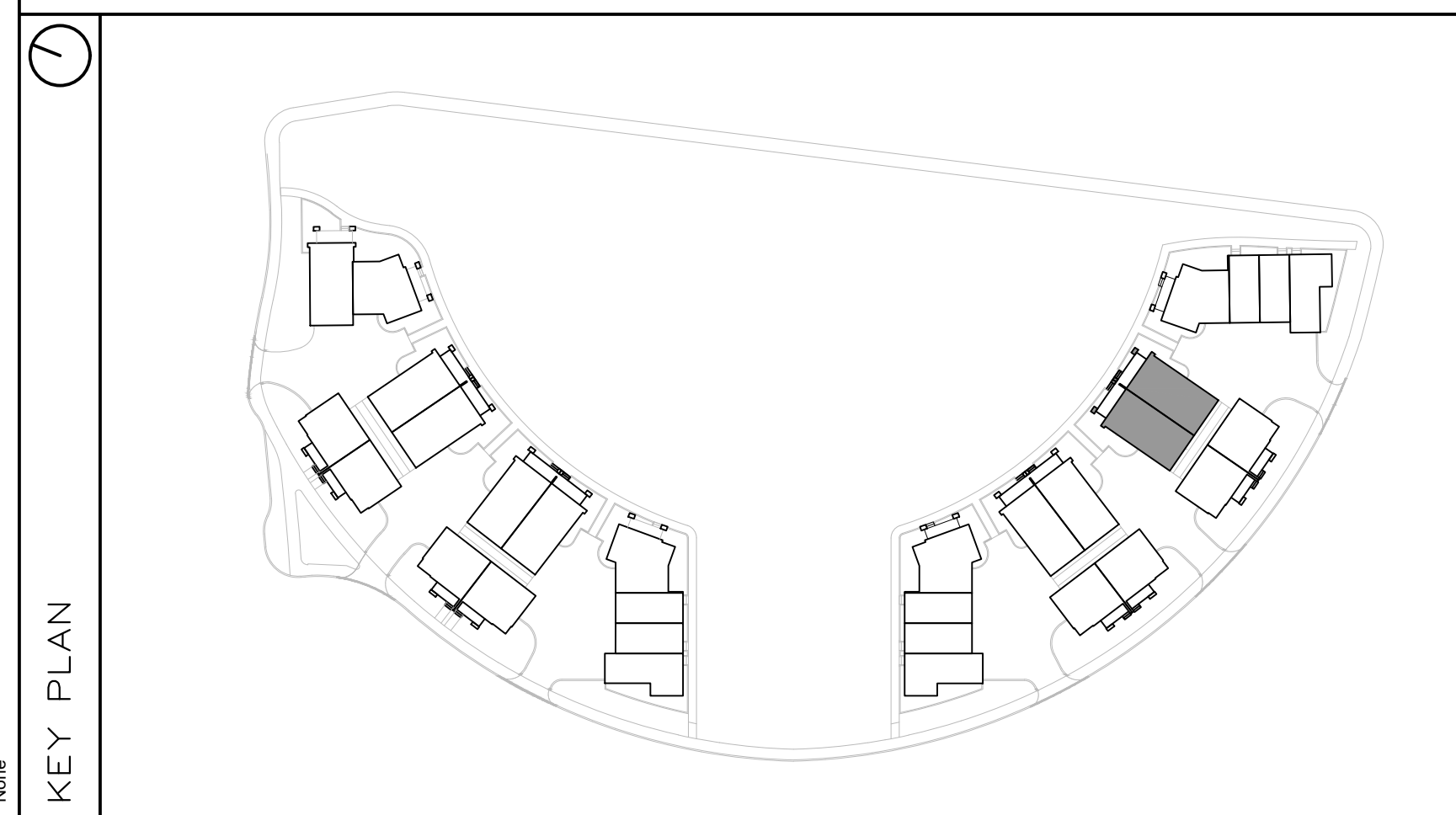
2 | BLOCK T10 – SOUTH ELEVATION
A2.10 | SCALE 1:75



3 | BLOCK T10 – EAST ELEVATION
A2.10 | SCALE 1:75



4 | BLOCK T10 – WEST ELEVATION
A2.10 | SCALE 1:75



FINISH MATERIAL LEGEND:

BV-1	BRICK VENEER; COLOR TBD
SV-1	STONE VENEER; ARRISCRAFT RENAISSANCE; COLOR: TBD
MF-1	PRE-FIN. METAL FLASHING; COLOR: GRAPHITE
MP-1	ZINC OR EQUIVALENT METAL PANEL; COLOR: CHARCOAL
MP-2	COPPER OR EQUIVALENT METAL PANEL; COLOR: COPPER
S-1	T&G CEDAR SOFFIT C/W PRE-FIN. METAL VENT STRIPS
S-2	HARDIE SOFFIT PANEL C/W VENT STRIP BY GENTEG; COLOR: GRAPHITE (TBD)
WS-1	PRE-FIN. HORIZ. WOOD (5"); SIDING BY CAPE COD; COLOR: CHARCOAL (TBD)
WS-2	PRE-FIN. HORIZ. WOOD (5"); SIDING BY CAPE COD; COLOR: 'LIGHT' (TBD)
WS-3	PRE-FIN. VERT. WOOD (5"); SIDING BY CAPE COD; COLOR: 'LIGHT' (TBD)
CB-1	CEMENT BOARD PANELS
PC#	PRECAST CONCRETE (PROFILE #)
CP	CEMENT PAVING
GR	PRE-FIN. PRE-ENG. ALUM. & GLASS GUARDRAIL
RV	ROOF VENT
AS	ASPHALT SHINGLES
SC#	SCENCE LIGHTING

PROJECT CONSULTANTS

DEVELOPER / OWNER

EQ HOMES INC.
THE REGIONAL GROUP
1751 WOODWARD DRIVE - 2ND FLOOR
OTTAWA, ON K2C 0P6
PHONE: (613) 230-2100

ARCHITECT

HOBIN ARCHITECTURE INC.
63 PAMILLA STREET
OTTAWA, ON K1S 3K7
CONTACT: MARK THIVERSE
PHONE: (613) 230-1200 x 105

PLANNING

NOVATECH
240 MICHAEL CONFLAND DRIVE SUITE 200
OTTAWA, ON K2M 1P6
CONTACT: ROBERT TRAN
PHONE: (613) 254-4643 x 212

LANDSCAPE

NOVATECH
240 MICHAEL CONFLAND DRIVE SUITE 200
OTTAWA, ON K2M 1P6
CONTACT: RYAN JAMES
PHONE: (613) 254-4643 x 222

TRAFFIC

NOVATECH
240 MICHAEL CONFLAND DRIVE SUITE 200
OTTAWA, ON K2M 1P6
CONTACT: BRAD BYVELDIS
PHONE: (613) 254-4643 x 206

CIVIL

NOVATECH
240 MICHAEL CONFLAND DRIVE SUITE 200
OTTAWA, ON K2M 1P6
CONTACT: TREVOR MCKAY
PHONE: (613) 254-4643 x 201

SURVEYOR

ANNIS, O'SULLIVAN, VOLLEBECK LTD.
14 GONCOURSE SUITE 500
OTTAWA, ON K2E 1S6
CONTACT: ANDREA BELL
PHONE: (613) 721-4932 x 226

GEOTECHNICAL

PATERSON GROUP INC.
11 AURIGA DRIVE
OTTAWA, ON K2E 1T3
CONTACT: SCOTT S. DENNIS
PHONE: (613) 226-1381

2	2024-11-29	REISSUED FOR ZBA + SPC
1	2024-10-11	ISSUED FOR SPC
no.	date	revision

It is the responsibility of the appropriate contractor to check and verify all dimensions on site and report all errors and/or omissions to the architect.

All contractors must comply with all pertinent codes and by-laws.

Do not scale drawings.
This drawing may not be used for construction until signed.

Copyright reserved.



Hobin Architecture Incorporated
63 Pamilla Street
Ottawa, Ontario
Canada K1S 3K7
T: 613-238-7200
F: 613-235-2005
E: mail@hobinarc.com
hobinarc.com

PROJECT/LOCATION:
FORECOURT TOWNHOMES
175 MAIN STREET - GREYSTONE

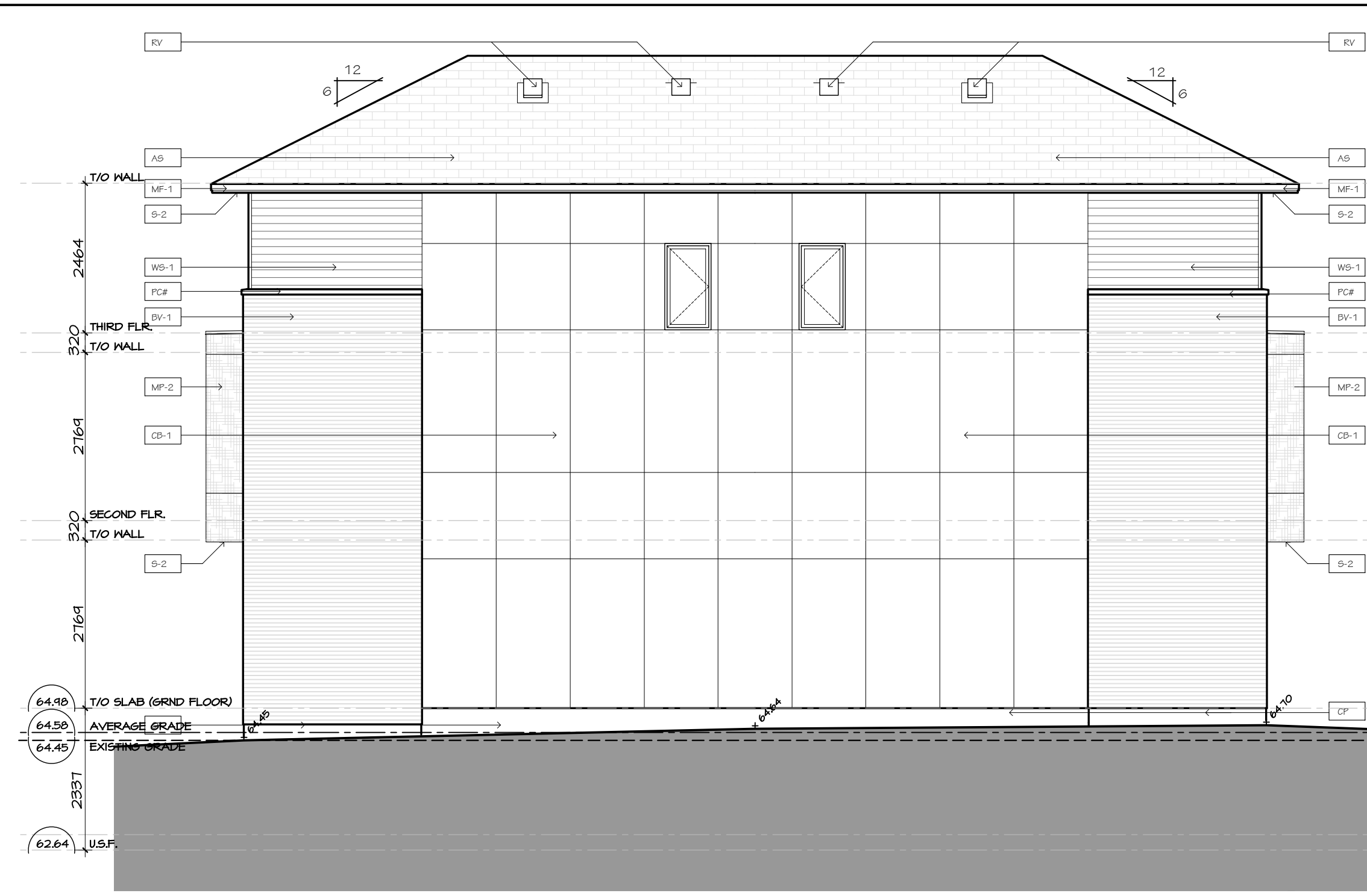
DRAWING TITLE:
**ELEVATIONS - BLOCK T10
BLOCK 28
295 DESCHÂTELETS AVE.**

DRAWN BY: DATE: SCALE:
24/09/23 1:75

PROJECT:
DRAWING NO.:

A2.10

REVISION NO.:



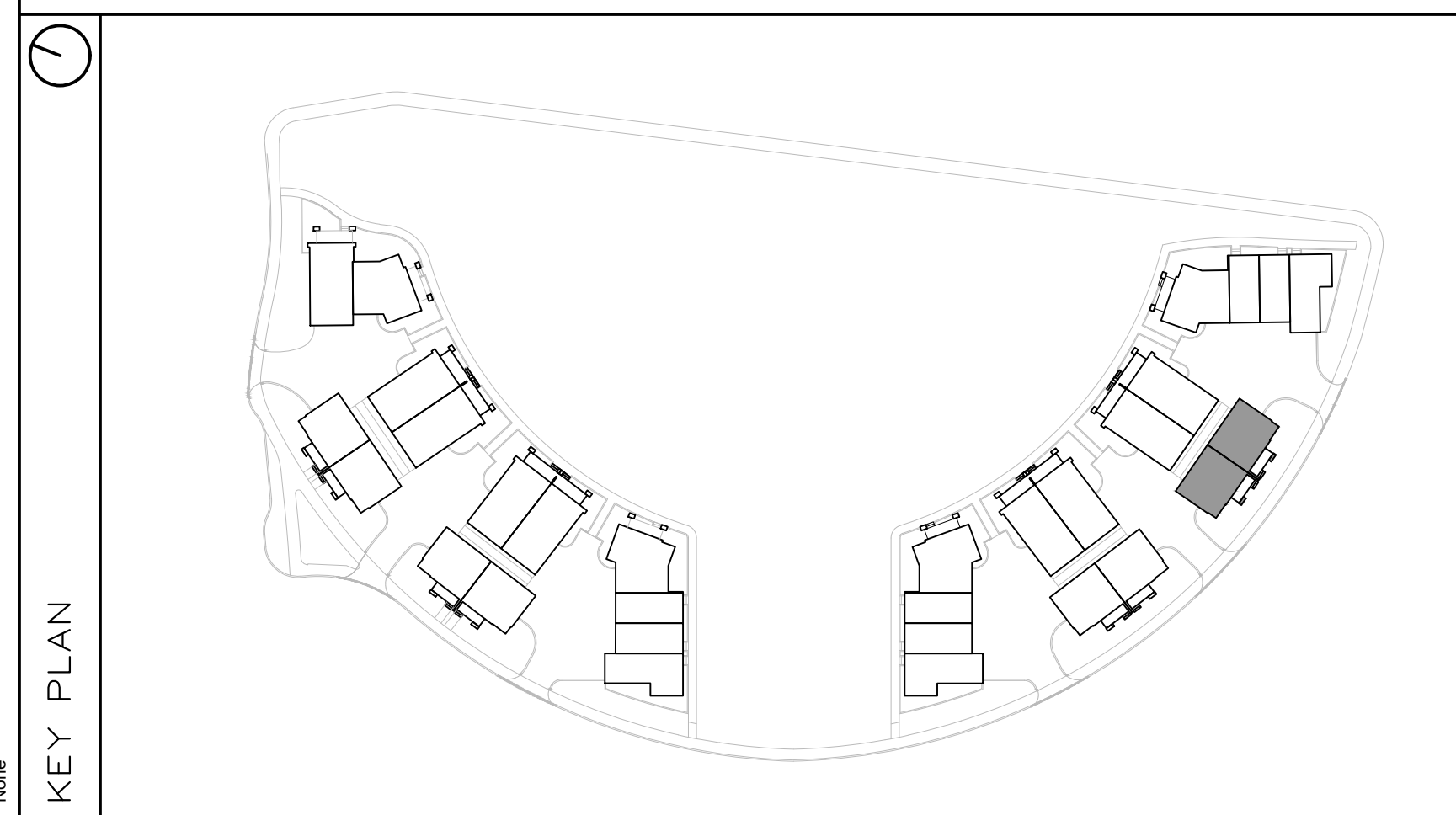
1 | BLOCK T11 – SOUTH ELEVATION
A2.11 | SCALE 1:75

2 | BLOCK T11 – NORTH ELEVATION
A2.11 | SCALE 1:75



3 | BLOCK T11 – EAST ELEVATION
A2.11 | SCALE 1:75

4 | BLOCK T11 – WEST ELEVATION
A2.11 | SCALE 1:75



FINISH MATERIAL LEGEND:

BV-1	BRICK VENEER; COLOR TBD
SV-1	STONE VENEER; ARRISGRAFT RENAISSANCE; COLOR: TBD
MF-1	PRE-FIN. METAL FLASHING; COLOR: GRAPHITE
MP-1	ZINC OR EQUIVALENT METAL PANEL; COLOR: CHARCOAL
MP-2	COPPER OR EQUIVALENT METAL PANEL; COLOR: COPPER
S-1	T&G CEDAR SOFFIT C/W PRE-FIN. METAL VENT STRIPS
S-2	HARDIE SOFFIT PANEL C/W VENT STRIP BY GENTEG; COLOR: GRAPHITE (TBD)
WS-1	PRE-FIN. HORIZ. WOOD (5"); SIDING BY CAPE COD; COLOR: CHARCOAL (TBD)
WS-2	PRE-FIN. HORIZ. WOOD (5"); SIDING BY CAPE COD; COLOR: 'LIGHT' (TBD)
WS-3	PRE-FIN. VERT. WOOD (5"); SIDING BY CAPE COD; COLOR: 'LIGHT' (TBD)
CB-1	CEMENT BOARD PANELS
PC#	PRECAST CONCRETE (PROFILE #)
CP	CEMENT PARGING
GR	PRE-FIN. PRE-ENG. ALUM. & GLASS GUARDRAIL
RV	ROOF VENT
AS	ASPHALT SHINGLES
SCON	SCONCE LIGHTING

PROJECT CONSULTANTS

DEVELOPER / OWNER

EQ HOMES INC.
THE REGIONAL GROUP
1751 WOODWARD DRIVE - 2ND FLOOR
OTTAWA, ON K2G 0P6
PHONE: (613) 230-2100

ARCHITECT

HOBIN ARCHITECTURE INC.
63 PAMILLA STREET
OTTAWA, ON K2M 3K7
CONTACT: MARK THIVERSE
PHONE: (613) 238-1200 x 105

PLANNING

NOVATECH
240 MICHAEL CONPLAND DRIVE SUITE 200
OTTAWA, ON K2M 1P6
CONTACT: ROBERT TRAN
PHONE: (613) 254-4643 x 212

LANDSCAPE

NOVATECH
240 MICHAEL CONPLAND DRIVE SUITE 200
OTTAWA, ON K2M 1P6
CONTACT: RYAN JAMES
PHONE: (613) 254-4643 x 222

TRAFFIC

NOVATECH
240 MICHAEL CONPLAND DRIVE SUITE 200
OTTAWA, ON K2M 1P6
CONTACT: BRAD BYVELDS
PHONE: (613) 254-4643 x 206

CIVIL

NOVATECH
240 MICHAEL CONPLAND DRIVE SUITE 200
OTTAWA, ON K2M 1P6
CONTACT: TREVOR MCKAY
PHONE: (613) 254-4643 x 201

SURVEYOR

ANNIS, O'SULLIVAN, VOLLEBECKE LTD.
14 GONGORSE SAITE SUITE 500
OTTAWA, ON K2E 1S6
CONTACT: ANDREA BUELL
PHONE: (613) 721-4352 x 226

GEOTECHNICAL

PATERSON GROUP INC.
11 AURORA DRIVE
OTTAWA, ON K2E 1T8
CONTACT: SCOTT S. DENNIS
PHONE: (613) 226-1351

no.	date	revision
2	2024-11-29	REISSUED FOR ZBA + SPC
1	2024-10-11	ISSUED FOR SPC

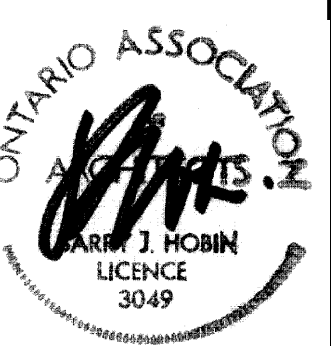
It is the responsibility of the appropriate contractor to check and verify all dimensions on site and report all errors and/or omissions to the architect.

All contractors must comply with all pertinent codes and by-laws.

Do not scale drawings.

This drawing may not be used for construction until signed.

Copyright reserved.



Hobin Architecture Incorporated

63 Pamilla Street
Ottawa, Ontario
Canada K1S 3K7

T: 613-238-7200
F: 613-235-2005
E: mail@hobinarc.com

hobinarc.com



PROJECT/LOCATION:

FORECOURT TOWNHOMES

175 MAIN STREET - GREYSTONE

DRAWING TITLE:

ELEVATIONS - BLOCK T11

BLOCK 28

295 DESCHÂTELETS AVE.

DRAWN BY:

DATE:

SCALE:

24/09/23

1:75

PROJECT:

DRAWING NO.:

A2.11

REVISION NO.:

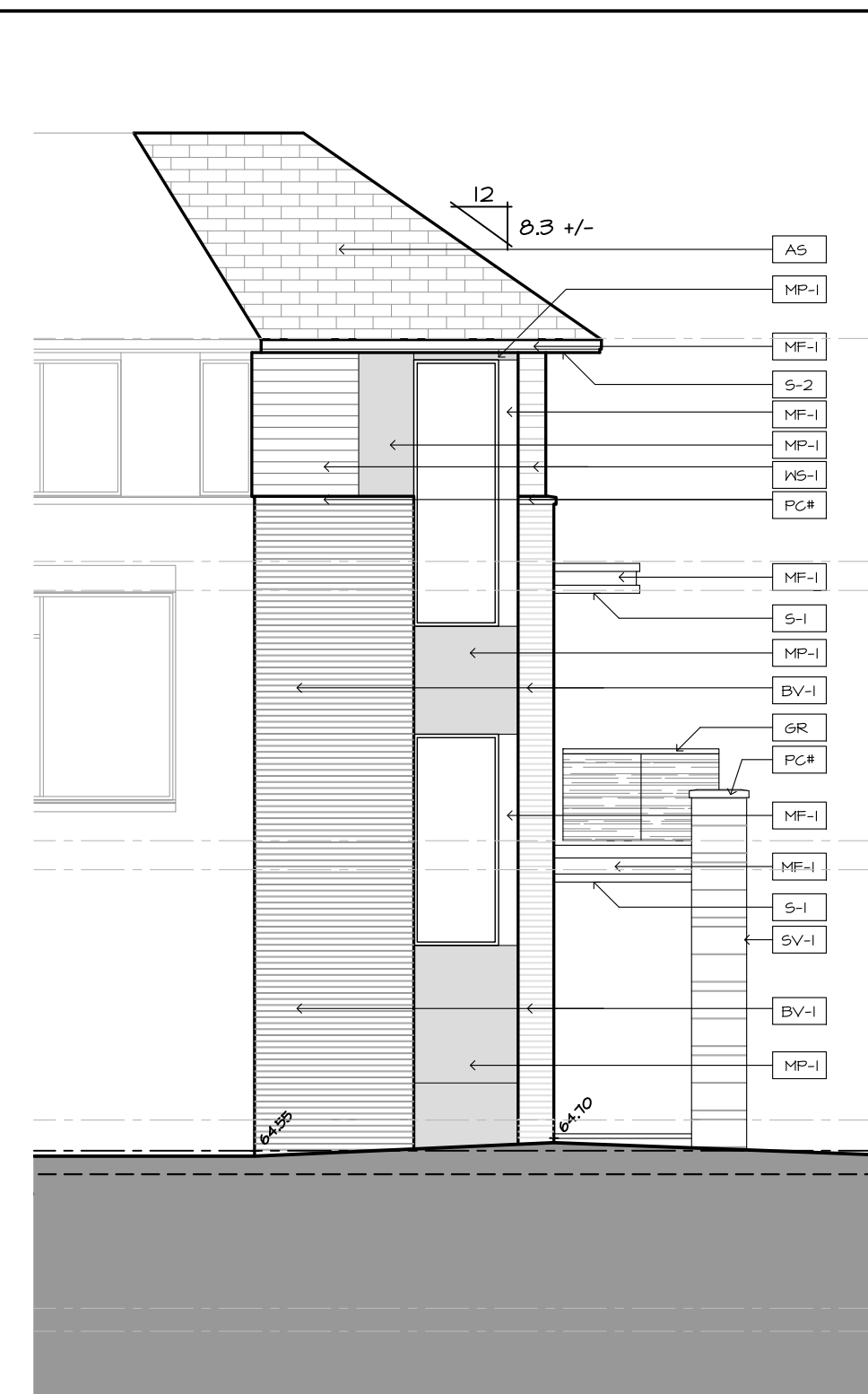
07-12-24-0130

File Number: D07-12-24-0130

City Plan No.: #19191



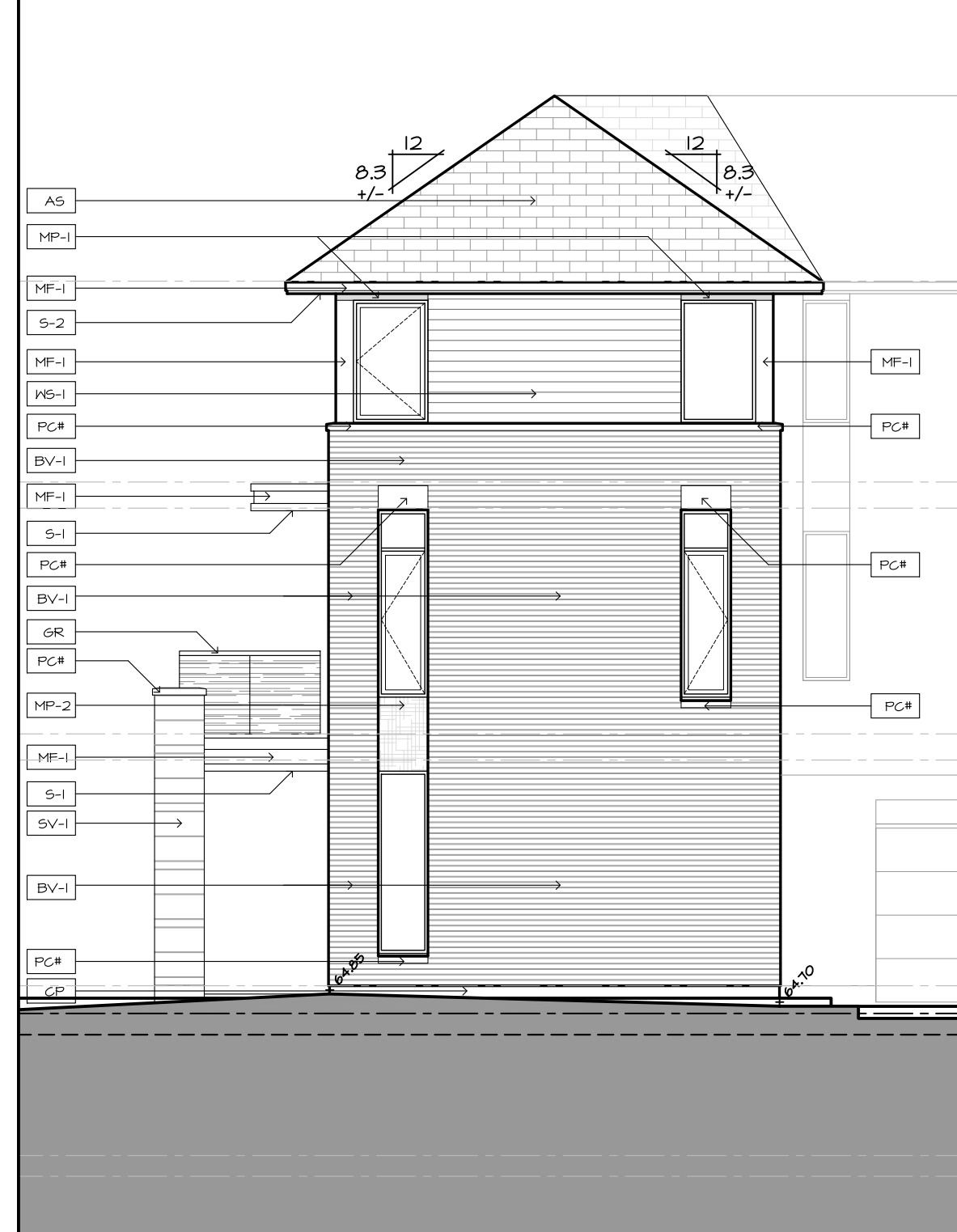
1 BLOCK T12 - NORTH-EAST ELEVATION
A2.12 SCALE 1:75



2 BLOCK T12 - EAST ELEVATION
A2.12 SCALE 1:75



3 BLOCK T12 - NORTH ELEVATION
A2.12 SCALE 1:75



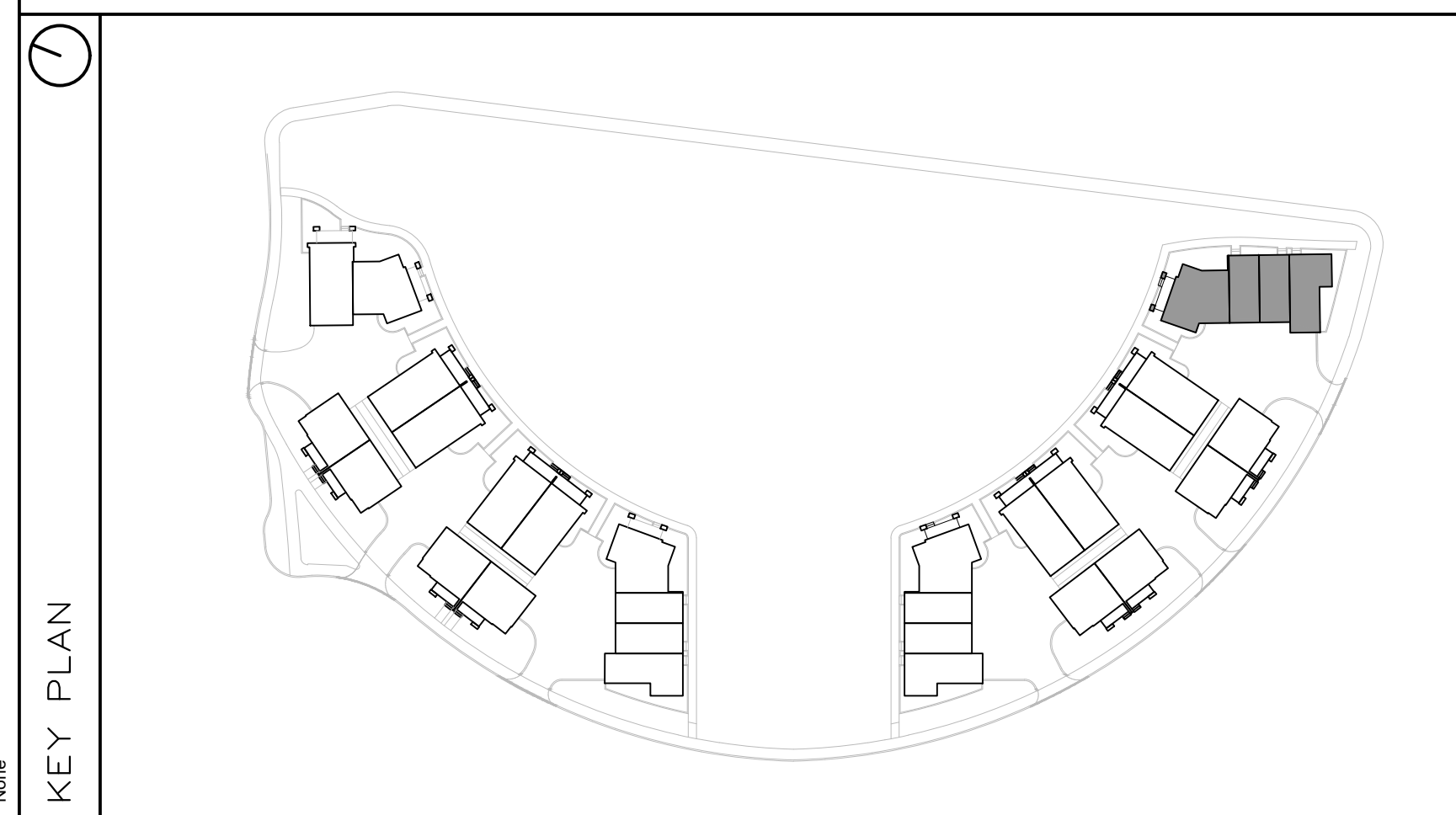
4 BLOCK T12 - WEST ELEVATION
A2.12 SCALE 1:75



5 BLOCK T12 - SOUTH-WEST ELEVATION
A2.12 SCALE 1:75



6 BLOCK T12 - SOUTH-EAST ELEVATION
A2.12 SCALE 1:75



FINISH MATERIAL LEGEND:

BV-1	BRICK VENEER; COLOR TBD
SV-1	STONE VENEER; ARRISCRAPT RENAISSANCE; COLOR: TBD
MF-1	PRE-FIN. METAL FLASHING; COLOR: GRAPHITE
MP-1	ZINC OR EQUIVALENT METAL PANEL; COLOR: CHARCOAL
MP-2	COPPER OR EQUIVALENT METAL PANEL; COLOR: COPPER
S-1	T&G CEDAR SOFFIT C/W PRE-FIN. METAL VENT STRIPS
S-2	HARDIE SOFFIT PANEL C/W VENT STRIP BY GENTEG; COLOR: GRAPHITE (TBD)
WS-1	PRE-FIN. HORIZ. WOOD (5"); SIDING BY CAPE COD; COLOR: CHARCOAL (TBD)
WS-2	PRE-FIN. HORIZ. WOOD (5"); SIDING BY CAPE COD; COLOR: 'LIGHT' (TBD)
WS-3	PRE-FIN. VERT. WOOD (5"); SIDING BY CAPE COD; COLOR: 'LIGHT' (TBD)
CB-1	CEMENT BOARD PANELS
PC#	PRECAST CONCRETE (PROFILE #)
CP	CEMENT PAVING
GR	PRE-FIN. PRE-ENG. ALUM. & GLASS GUARDRAIL
RV	ROOF VENT
AS	ASPHALT SHINGLES
SCON	SCONCE LIGHTING

PROJECT CONSULTANTS

DEVELOPER / OWNER

EQ HOMES INC.
THE REGIONAL GROUP
1171 WOODWARD DRIVE - 2ND FLOOR
OTTAWA, ON K2C 0P6
PHONE: (613) 230-2100

ARCHITECT

HOBIN ARCHITECTURE INC.
63 PAMILLA STREET
OTTAWA, ON K2H 3K7
CONTACT: MARK THIVERSE
PHONE: (613) 254-4643 x 105

PLANNING

NOVATECH
240 MICHAEL CONFLAND DRIVE SUITE 200
OTTAWA, ON K2M 1P6
CONTACT: ROBERT TRAN
PHONE: (613) 254-4643 x 212

LANDSCAPE

NOVATECH
240 MICHAEL CONFLAND DRIVE SUITE 200
OTTAWA, ON K2M 1P6
CONTACT: RYAN JAMES
PHONE: (613) 254-4643 x 222

TRAFFIC

NOVATECH
240 MICHAEL CONFLAND DRIVE SUITE 200
OTTAWA, ON K2M 1P6
CONTACT: BRAD BYVELDIS
PHONE: (613) 254-4643 x 206

CIVIL

NOVATECH
240 MICHAEL CONFLAND DRIVE SUITE 200
OTTAWA, ON K2M 1P6
CONTACT: TREVOR MCKAY
PHONE: (613) 254-4643 x 201

SURVEYOR

ANNIS, O'SULLIVAN, VOLLEBECK LTD.
14 GONDARSE SAITE SUITE 500
OTTAWA, ON K2E 1S6
CONTACT: ANDREA BUELL
PHONE: (613) 717-4952 x 226

GEOTECHNICAL

PATERSON GROUP INC.
11 AURIGA DRIVE
OTTAWA, ON K2E 1T3
CONTACT: SCOTT S. DENNIS
PHONE: (613) 226-1351

no.	date	revision
2	2024-11-29	REISSUED FOR ZBA + SPC
1	2024-10-11	ISSUED FOR SPC

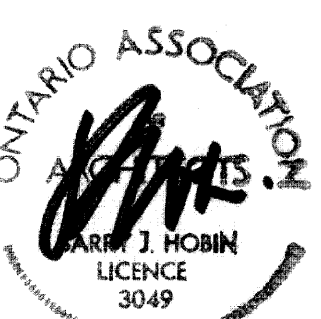
It is the responsibility of the appropriate contractor to check and verify all dimensions on site and report all errors and/or omissions to the architect.

All contractors must comply with all pertinent codes and by-laws.

Do not scale drawings.

This drawing may not be used for construction until signed.

Copyright reserved.



Hobin Architecture Incorporated
63 Pamilla Street
Ottawa, Ontario
Canada K1S 3K7
T: 613-238-7200
F: 613-235-2005
E: mail@hobinarc.com
hobinarc.com



PROJECT/LOCATION:

FORECOURT TOWNHOMES

175 MAIN STREET - GREYSTONE

DRAWING TITLE:

ELEVATIONS - BLOCK T12
BLOCK 28
295 DESCHÂTELETS AVE.

DRAWN BY:

DATE:

24/09/23

SCALE:

1:75

PROJECT:

DRAWING NO.:

A2.12

REVISION NO.:

City Plan No.: #19191

File Number: D07-12-24-0130