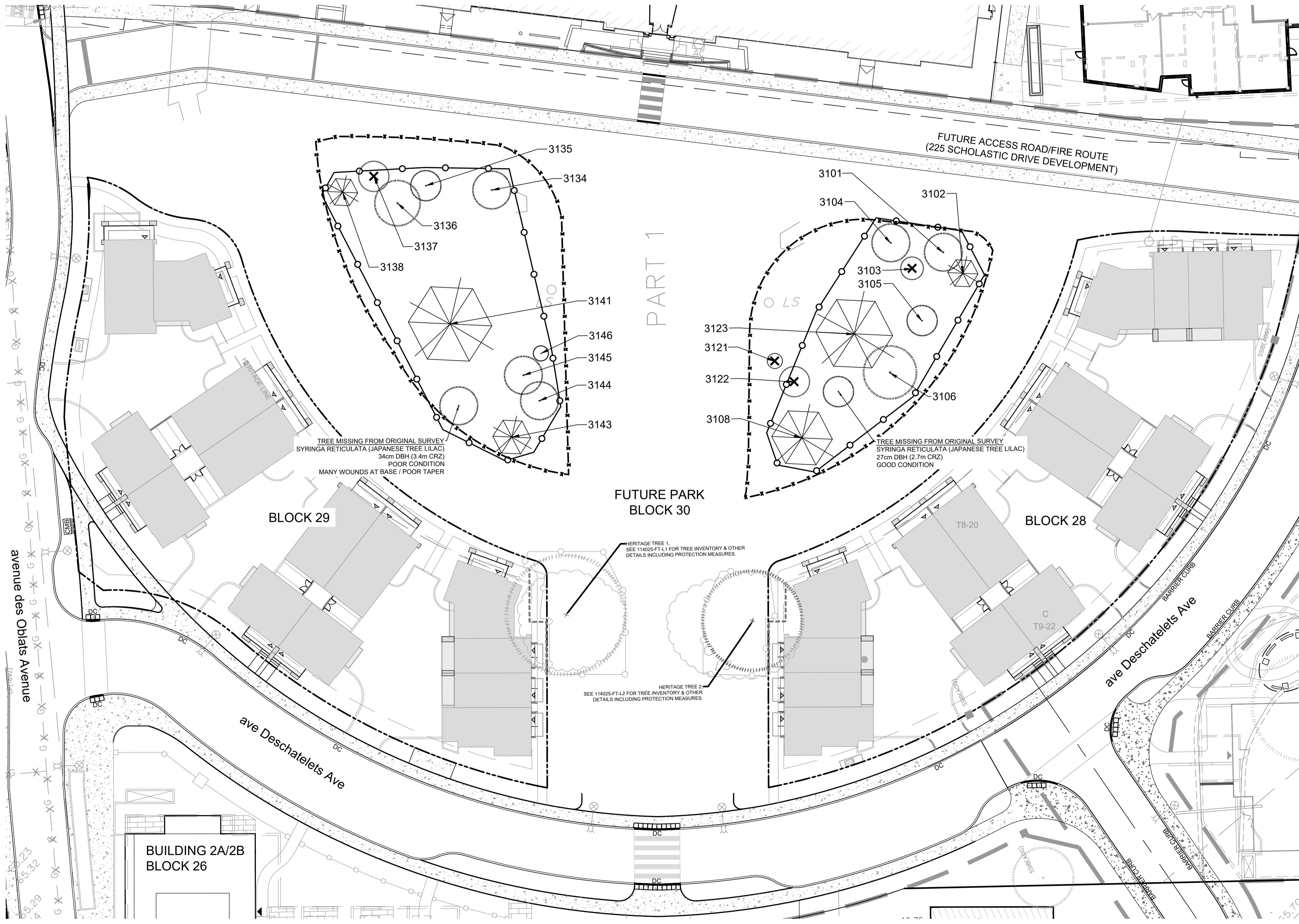
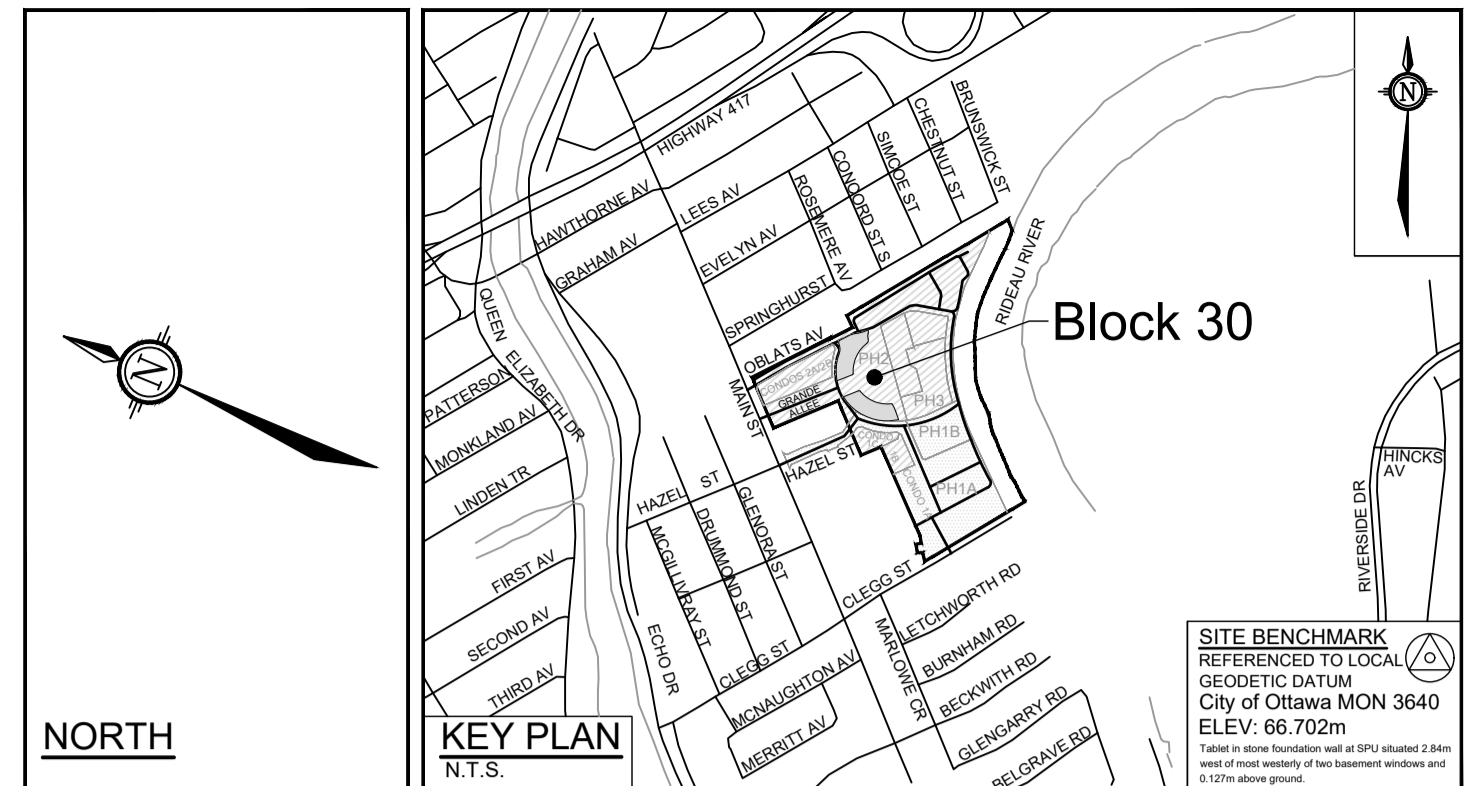


TREE INVENTORY (CONDUCTED NOV 2024):

No.	Botanical Name	Common Name	DBH (m)	CRZ (m)	Condition	Remarks
399	Acer rubrum	Red Maple	0.60	6.00	Good	Recently pruned
492	Acer saccharinum	Silver Maple	0.70	7.00	Good	Recently pruned
3101	Prunus virginiana 'Shubert'	Shubert Chokecherry	0.33	3.30	Poor	Black knot disease
3102	Picea pungens 'Glauca'	Colorado Blue Spruce	0.31	3.10	Good	Crowded by Chokecherries / Condition should improve when Prunus removed
3103	Prunus virginiana 'Shubert'	Shubert Chokecherry	-	-	DEAD	-
3104	Prunus virginiana 'Shubert'	Shubert Chokecherry	0.28	2.80	Poor	Black knot disease
3105	Syringa reticulata	Japanese Tree Lilac	0.32	3.20	Good	Included bark from poor branch union
3106	Catalpa speciosa	Northern Catalpa	0.63	6.30	Fair	Specimen / Discolored bark / Seam / Large branch failure imminent
3108	Picea pungens 'Glauca'	Colorado Blue Spruce	0.54	5.40	Fair	-
3121	Prunus virginiana 'Shubert'	Shubert Chokecherry	-	-	DEAD	-
3122	Prunus virginiana 'Shubert'	Shubert Chokecherry	-	-	DEAD	-
3123	Pinus nigra	Austrian Pine	0.59	5.90	Poor	Diplodia tip blight / Past prime / Ragged appearance

No.	Botanical Name	Common Name	DBH (m)	CRZ (m)	Condition	Remarks
3134	Malus spp.	Crabapple	0.36	3.60	Good	Nice form / Some dieback / Wounds healing well
3135	Prunus virginiana 'Shubert'	Shubert Chokecherry	0.21	2.10	Poor	Black knot disease
3136	Prunus virginiana 'Shubert'	Shubert Chokecherry	0.34	3.40	Poor	Black knot disease
3137	Prunus virginiana 'Shubert'	Shubert Chokecherry	-	-	DEAD	-
3138	Picea pungens 'Glauca'	Colorado Blue Spruce	0.34	3.40	Good	-
3141	Pinus nigra	Austrian Pine	0.61	6.10	Poor	Lean / Soil disturbed at base / Root damage possible / Corrective growth from lean noted
3143	Picea pungens 'Glauca'	Colorado Blue Spruce	0.31	3.10	Good	-
3144	Prunus virginiana 'Shubert'	Shubert Chokecherry	0.30	3.00	Poor	Black knot disease
3145	Prunus virginiana 'Shubert'	Shubert Chokecherry	0.33	3.30	Poor	Black knot disease
3146	Prunus virginiana 'Shubert'	Shubert Chokecherry	0.17	1.70	Poor	Black knot disease

NOTE: TREE LABELS REFERENCE DOCUMENT: "TREE CONSERVATION PLAN PHASED REMOVALS PHASE 2 AND 3" SHEET NO: 114025-TG3-B LAST CIRCULATED: JULY 13, 2017



LANDSCAPE LEGEND:

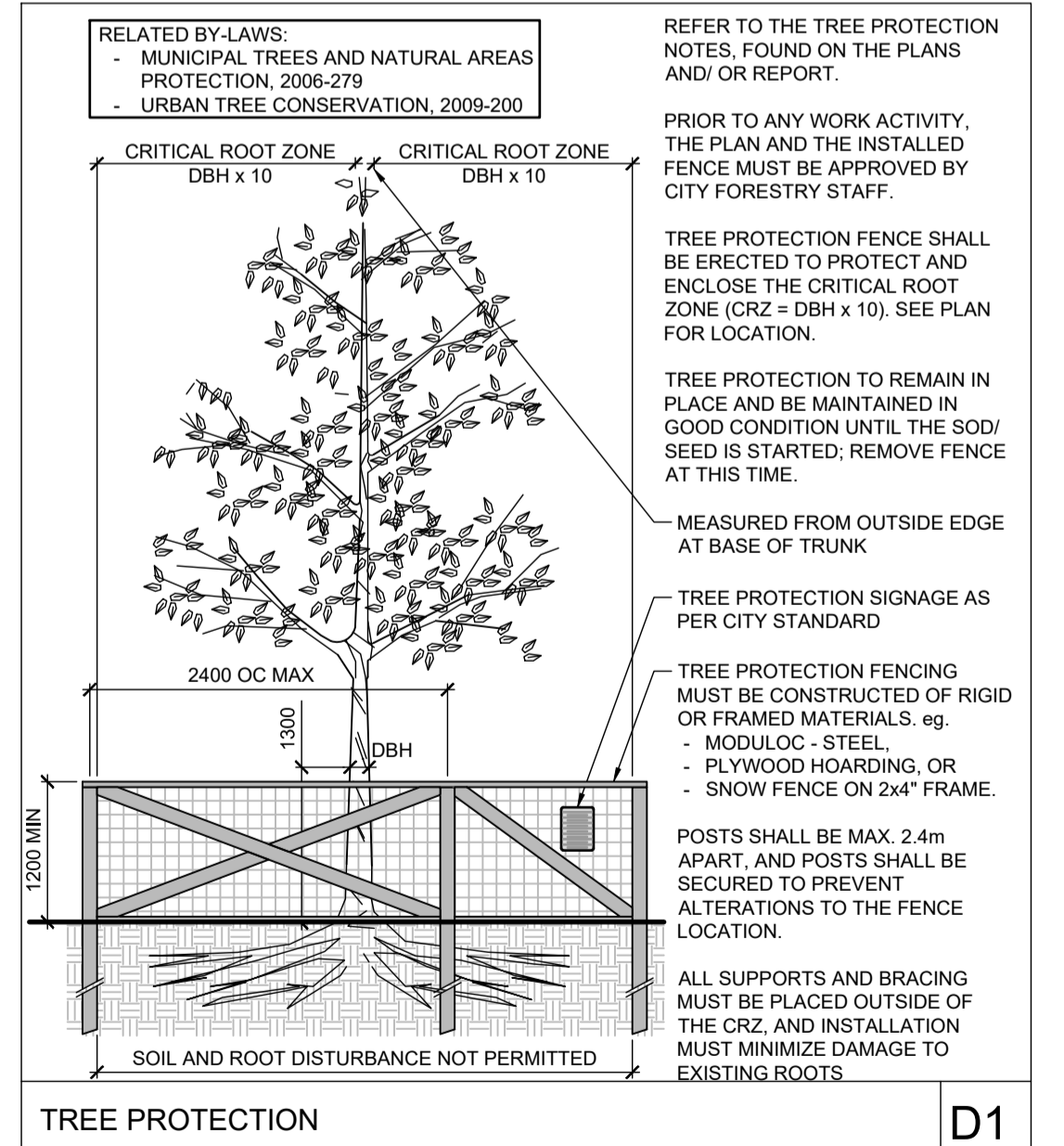
- EXISTING TREE TO REMAIN
- DEAD TREE (NOV 2024)
- MINIMUM NEEDED 1.8m HI. TREE PROTECTION FENCE (SET BEFORE ANY WORK BEGINS)
- EXISTING TREE PROTECTION FENCE (INSTALLED DURING PHASE 1)
- PROPERTY LINE
- PROPOSED BUILDING
- OFF-SITE CONCRETE

TREE PROTECTION

- Implement the following protection measures for retained trees, both on site and on adjacent sites, prior to any work activity, including tree removal. Maintain tree protection fence in place and in good condition for the duration of site works:
- The Landscape Architect or Certified Arborist is to determine the location of the tree protection fencing and detail it on any associated plans for the site (e.g. tree conservation report, tree disclosure report, etc.).
 - Under the guidance of a Landscape Architect or Certified Arborist, erect a fence at the critical root zone (CRZ) of trees. Diameter at breast height (DBH) is the trunk diameter measured at 1.3m height on the tree trunk. The CRZ is calculated as DBH x 10. Refer to the Tree Protection Fence detail.
 - Refer to the Tree Protection Plan for fence location. City Forestry Staff are to approve both the plan and the installed fence prior to work commencement.
 - Do not place any material or equipment within 2m of the CRZ of any tree, including outhouses.
 - Do not attach any signs, notices, or posters to any tree.
 - Do not disturb, raise, or lower the existing grade within the CRZ without approval.
 - Only tunnel or bore when digging within the CRZ of a tree. Hand work only where required within the CRZ; absolutely no machinery permitted.
 - Do not damage the root system, trunk, or branches, or any tree.
 - Do not extend hard surface or significantly change landscaping.
 - Ensure that exhaust fumes from all equipment are directed away from any tree canopy.
 - Prior to work taking place, notify and consult the Landscape Architect and City Forestry Staff if roots must be cut. Roots 20mm or larger should be cut at right angles with clean, sharp horticultural tools without tearing, crushing, or pulling. Refer to City of Ottawa Specification S.P. F-8011 Tree Protection, Excavation of Root Zone.
 - If damaged or objectionable branches are observed, consult the Landscape Architect, before any work is conducted. Do not prune leaders. Do not prune more than 1/4 of crown.
 - Set up a water and fertilizing program, if trees are being affected by site works, to the satisfaction of the Landscape Architect.
 - The Landscape Architect is to prescribe mitigation measures if the protected fenced area must be reduced to facilitate construction. Measures may include the placement of plywood, wood chips, or straw plating over the roots for protection. City Forestry Staff are to approve said measures prior to fence movement.
 - City of Ottawa By-law: Protects municipal trees and municipal natural areas in the City of Ottawa and trees on private property in the urban area of the City of Ottawa (2020-340).

GENERAL

- Read and interpret this drawing/ drawing set in conjunction with all the contract details and specifications, including related civil, utility, structural, architectural, mechanical, electrical, environmental, geotechnical, and survey information.
- The Contractor is to determine the exact location, size, material, and elevation of all existing utilities prior to commencing construction. Protect and assume responsibility for all existing utilities regardless of being shown on the drawings.
- It is essential to use the plans and details in conjunction with the specifications and notes.
- Do not scale drawings. Work to dimensions only.
- Protect all existing and retained vegetation for the duration of construction according to the contract details and specifications.
- Reinstate all areas and items damaged or disturbed, beyond the Limit of Work, because of construction activities, including but not limited to construction staging areas, haul roads, stockpile areas, etc. to the satisfaction of the Consultant. Unless otherwise noted, Contractor is to reinstate all areas to pre-construction condition or better to the satisfaction of the Contract Administrator.

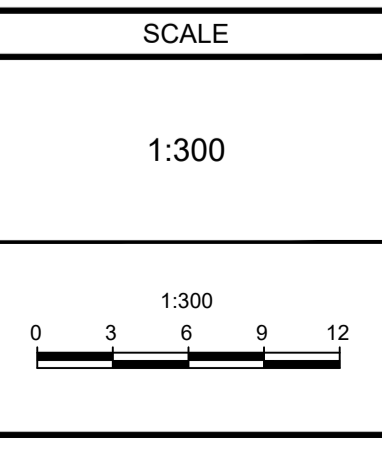


NOTE: THE POSITION OF ALL POLE LINES, CONDUITS, WATERMANS, SEWERS AND OTHER UNDERGROUND AND OVERGROUND UTILITIES AND STRUCTURES IS NOT NECESSARILY SHOWN ON THE CONTRACT DRAWINGS, AND WHERE SHOWN, THE ACCURACY OF THE POSITION OF SUCH UTILITIES AND STRUCTURES IS NOT GUARANTEED. BEFORE STARTING WORK, DETERMINE THE EXACT LOCATION OF ALL SUCH UTILITIES AND STRUCTURES AND ASSUME ALL LIABILITY FOR DAMAGE TO THEM.

Owner:
Regional Group
c/o Evan Garfield
1737 Woodward Drive
Ottawa, ON K2C 0P9
Phone: 613-239-2100

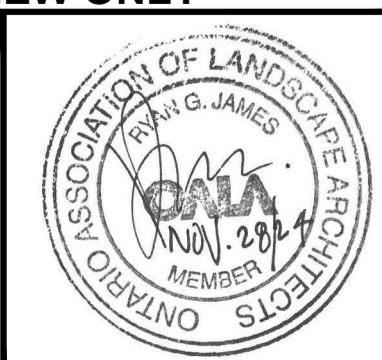
**PRELIMINARY
NOT FOR
CONSTRUCTION**

No.	REVISION	DATE	BY
1.	ISSUED WITH FORECOURT TOWNHOMES SPA	NOV 29/24	RGJ



DESIGN	TB
CHECKED	RJ
DRAWN	TB
CHECKED	MT
APPROVED	RJ

FOR REVIEW ONLY



NOVATECH
Engineers, Planners & Landscape Architects
Suite 200, 240 Michael Cowpland Drive
Ottawa, Ontario, Canada K2M 1P6
Telephone: (613) 254-9643
Facsimile: (613) 254-5867
Website: www.novatech-eng.com

LOCATION CITY OF OTTAWA GREYSTONE VILLAGE 185 MAIN STREET FORECOURT TOWNHOMES	PROJECT No: 114025-05
DRAWING NAME TREE CONSERVATION PLAN BLOCK 30 - FORECOURT PARK	REV 1
	DRAWING No: 114025-FP-TCR

M:\2014\114025\CAD\Landscaping\Tree Con Report\114025_TCR_Block 30.dwg, TCR, Dec 03, 2024 - 2:11pm, barakale