

CANOPY COVER CHART:

PROPOSED & RETAINED CANOPY COVERAGE AT MATURITY				
SIZE OF PROPOSED TREE	AVERAGE MATURE SPREAD	CANOPY COVERAGE PER TREE AT MATURITY (m2)	QUANTITY OF TREES	TOTAL CANOPY COVERAGE
Deciduous - Small	4.5m	16	5	80
Deciduous - Medium	10m	79	21	1659
TOTAL PROPOSED CANOPY COVERAGE (m2):				1,739
TOTAL SITE AREA FOR 295 & 355 DESCHÂTELETS (m2):				4,832
EST. PROPOSED CANOPY COVERAGE (%):				36%

1. Area of a circle =  $(\pi \times r) \times \pi$   
2. Canopy coverage per tree calculation: (average mature spread/2) x (average mature spread/2) x  $\pi$

SOURCE REFERENCE:  
PLAN OF SUBDIVISION OF PART OF LOT "H" CONCESSION "D" (RIDEAU FRONT), PREPARED BY ANNIS, O-SULLIVAN, VOLLEBEKK LTD. ON DECEMBER 15, 2017. (PLAN 4M-1596)  
TOPOGRAPHIC INFORMATION:  
HORIZONTAL DATUM: NAD 83 (ORIGINAL), MTM - ZONE 9  
VERTICAL DATUM: CGVD28.78  
1. DRAFT PLAN OF SUBDIVISION OF PART OF LOT "H" CONCESSION "D" (RIDEAU FRONT), PREPARED BY ANNIS, O-SULLIVAN, VOLLEBEKK LTD (2015)  
2. NOVATECH TOPOGRAPHIC SURVEY, APRIL 2024

ANDREW MCCREIGHT  
MANAGER, DEVELOPMENT REVIEW CENTRAL  
PLANNING, DEVELOPMENT & BUILDING SERVICES  
DEVELOPMENT DEPARTMENT, CITY OF OTTAWA

APPROVED

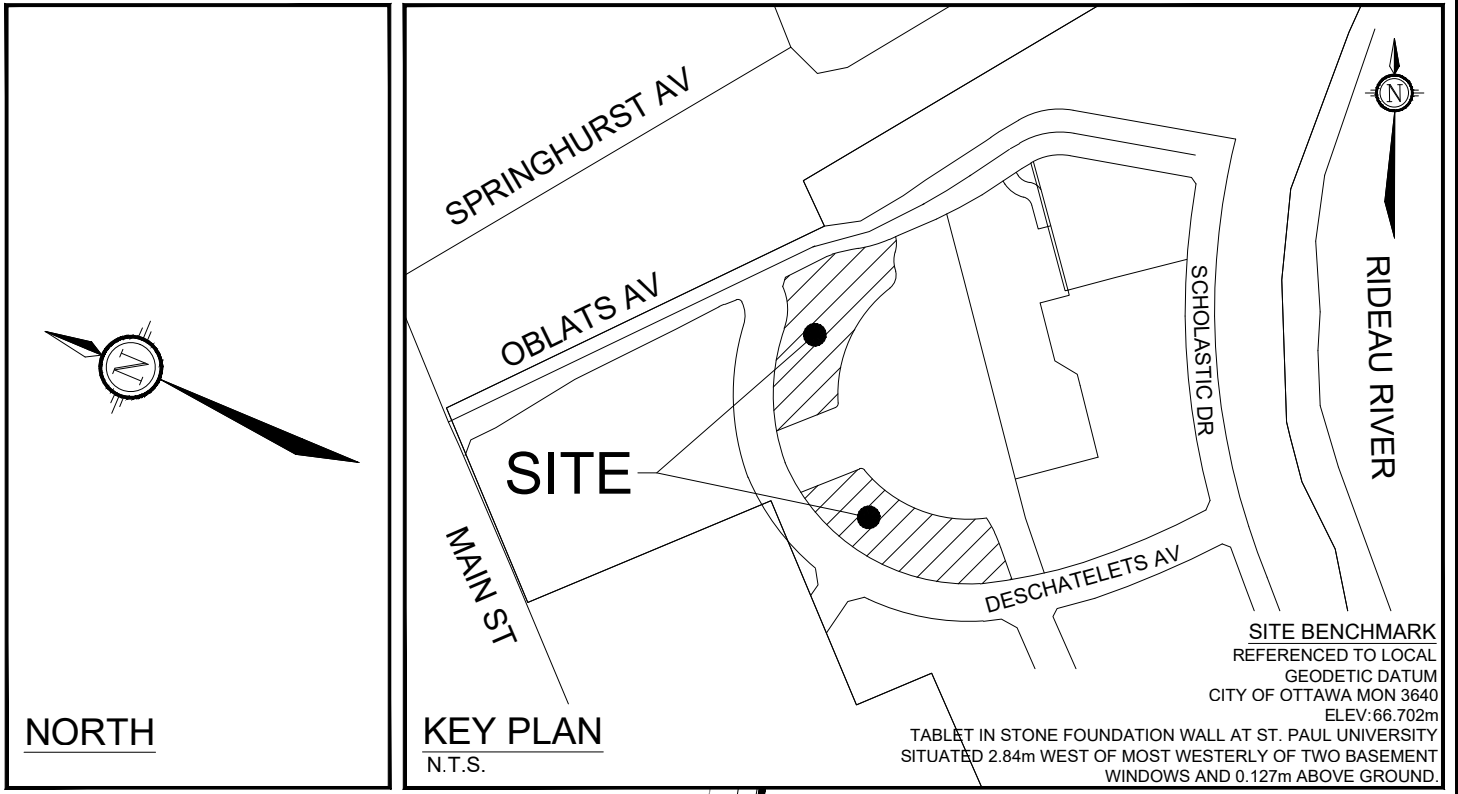
By Andrew McCreight at 12:19 pm, Jul 07, 2025

TREE PLANTING IN SENSITIVE CLAY

- The landscape plans have been developed in accordance with the Geotechnical Investigation Report PG6948-1 prepared by Paterson Group, dated February 1, 2024 and the memo PG6948-MEMO.01 prepared by Paterson Group, issued by Scott S. Dennis, P.Eng on April 29, 2024, that confirms the categories and locations of clay soils.
- In this case tree planting is restricted by sensitive clay.
- The following City of Ottawa clay soils guideline applies: Guidelines for Tree Planting in Sensitive Marine Clay Soils-2017.
- The soil volumes provided are sufficient for a reasonable chance of tree survival. Unless otherwise noted, all new trees on City property meet the minimum soil volume requirements of the following, based on a depth of 1.5m below finished grade, and subtracting the volume of utility trenches:
  - Small tree (mature height up to 7.5m) - 25m<sup>3</sup> minimum soil volume provided.
  - Medium tree (mature height 7.5-14m) - 30m<sup>3</sup> minimum soil volume provided.Where trees share a continuous greenspace:
  - Two (2) small trees - 15m<sup>3</sup> minimum soil volume provided per tree.
  - Two (2) medium trees - 18m<sup>3</sup> minimum soil volume provided per tree.

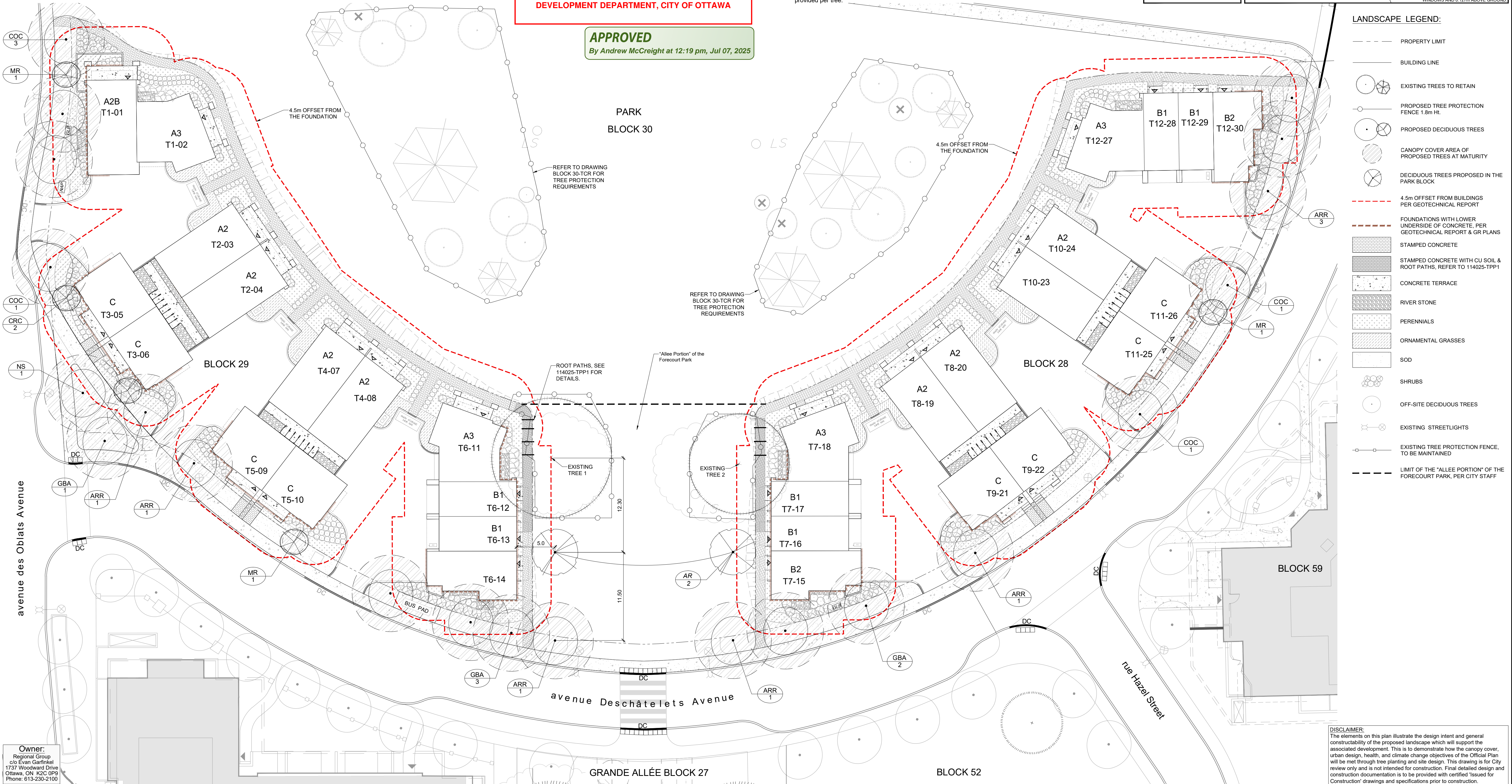
STREETSCAPE

- There are no trees proposed in Block 28.
- Adjacent to Block 28, there are 9 medium trees and 1 small tree proposed in the right of way, along Deschatelets Avenue.
- There are a total of 2 medium and 2 small trees proposed on the plan, in Block 29.
- Adjacent to Block 29, there are 9 medium and 2 small trees proposed in the right of way, along Deschatelets Avenue and Oblats Avenue.



LANDSCAPE LEGEND:

- PROPERTY LIMIT
- BUILDING LINE
- EXISTING TREES TO RETAIN
- PROPOSED TREE PROTECTION FENCE 1.8m Ht.
- PROPOSED DECIDUOUS TREES
- CANOPY COVER AREA OF PROPOSED TREES AT MATURITY
- DECIDUOUS TREES PROPOSED IN THE PARK BLOCK
- 4.5m OFFSET FROM BUILDINGS PER GEOTECHNICAL REPORT
- FOUNDATIONS WITH LOWER UNDERSIDE OF CONCRETE, PER GEOTECHNICAL REPORT & GR PLANS
- STAMPED CONCRETE
- STAMPED CONCRETE WITH CU SOIL & ROOT PATHS, REFER TO 114025-TPP1
- CONCRETE TERRACE
- RIVER STONE
- PERENNIALS
- ORNAMENTAL GRASSES
- SOD
- SHRUBS
- OFF-SITE DECIDUOUS TREES
- EXISTING STREETLIGHTS
- EXISTING TREE PROTECTION FENCE, TO BE MAINTAINED
- LIMIT OF THE "ALLEE PORTION" OF THE FORECOURT PARK, PER CITY STAFF



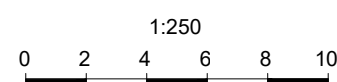
DISCLAIMER:  
The elements on this plan illustrate the design intent and general constructability of the proposed landscape which will support the associated development. This is to demonstrate how the canopy cover, urban design, health, and climate change objectives of the Official Plan will be met through tree planting and site design. This drawing is for City review only and is not intended for construction. Final detailed design and construction documentation is to be provided with certified 'Issued for Construction' drawings and specifications prior to construction.

NOTE:  
THE POSITION OF ALL POLE LINES, CONDUITS, WATERMANS, SEWERS AND OTHER UNDERGROUND AND OVERGROUND UTILITIES AND STRUCTURES IS NOT NECESSARILY SHOWN ON THE CONTRACT DRAWINGS, AND WHERE SHOWN, THE ACCURACY OF THE POSITION OF SUCH UTILITIES AND STRUCTURES IS NOT GUARANTEED, BEFORE STARTING WORK, DETERMINE THE EXACT LOCATION OF ALL SUCH UTILITIES AND STRUCTURES AND ASSUME ALL LIABILITY FOR DAMAGE TO THEM.

No.	REVISION	DATE	BY	No.	REVISION	DATE	BY
6.	RE-ISSUED FOR SITE PLAN APPROVAL	JUN 10/25	RGJ	1.	ISSUED FOR SITE PLAN APPROVAL	AUG 14/24	RGJ
5.	RE-ISSUED FOR SITE PLAN APPROVAL	MAY 22/25	RGJ	2.	RE-ISSUED FOR SITE PLAN APPROVAL	OCT 17/24	RGJ
4.	REVISED PER SITE PLAN UPDATES	APR 29/25	RGJ	3.	REVISED PER CITY COMMENTS	NOV 29/24	RGJ
3.	REVISED PER CITY COMMENTS	NOV 29/24	RGJ				

SCALE

1:250



DESIGN

TCB

CHECKED

RGJ

DRAWN

TCB

CHECKED

RGJ

APPROVED

RGJ



IFS ASSOCIATES  
Andrew K. Boyd, R.P.F.  
Consulting Urban Forester  
P.O. Box 13593, Kanata,  
Ontario, Canada K2M 1P6  
Telephone (613) 838-5717  
Website www.ifsassociates.ca

NOVATECH  
Engineers, Planners & Landscape Architects  
Suite 200, 240 Michael Cowpland Drive  
Ottawa, Ontario, Canada K2M 1P6  
Telephone (613) 254-9643  
Facsimile (613) 254-5867  
Website www.novatech-eng.com

LOCATION  
CITY OF OTTAWA  
GREYSTONE VILLAGE

DRAWING NAME

295 AND 355 DESCHÂTELETS AVE.  
OVERALL LANDSCAPE PLAN

PROJECT No.

114025-00

REV

REV # 6

DRAWING No.

114025-FT-OL