

Copyright Reserved

The Contractor shall verify and be responsible for all dimensions. DO NOT scale the drawing - any errors or omissions shall be reported to Stantec without delay.
The Copyrights to all designs and drawings are the property of Stantec. Reproduction or use for any purpose other than that authorized by Stantec is forbidden.

Legend

- PROPOSED SILT FENCE AS PER OPSD 219.110
- PROPOSED CATCH BASIN PROTECTION AS PER DETAIL
- PROPOSED MUD MAT LOCATION

Best Management Practices

THE CONTRACTOR SHALL IMPLEMENT BEST MANAGEMENT PRACTICES, TO PROVIDE FOR PROTECTION OF THE AREA DRAINAGE SYSTEM AND THE RECEIVING WATERCOURSE, DURING CONSTRUCTION ACTIVITIES.

THE CONTRACTOR ACKNOWLEDGES THAT FAILURE TO IMPLEMENT APPROPRIATE EROSION AND SEDIMENT CONTROL MEASURES MAY BE SUBJECT TO PENALTIES IMPOSED BY ANY APPLICABLE REGULATORY AGENCY

EROSION MUST BE MINIMIZED AND SEDIMENTS MUST BE REMOVED FROM CONSTRUCTION SITE RUN-OFF IN ORDER TO PROTECT DOWNSTREAM AREAS. DURING ALL CONSTRUCTION, EROSION AND SEDIMENTATION SHOULD BE CONTROLLED BY THE FOLLOWING TECHNIQUES:

1. LIMIT THE EXTENT OF EXPOSED SOILS AT ANY GIVEN TIME.
2. REVEGETATE EXPOSED AREAS AND SLOPES AS SOON AS POSSIBLE.
3. MINIMIZE AREA TO BE CLEARED AND GRUBBED.
4. PROTECT EXPOSED SLOPES WITH PLASTIC OR SYNTHETIC MULCHES.
5. INSTALL CATCH BASIN INSERTS OR EQUIVALENT IN ALL PROPOSED CATCH BASINS AND CATCH BASIN MANHOLES AND IN ALL EXISTING CATCH BASINS THAT WILL RECEIVE RUN-OFF FROM THE SITE.
6. A SILT FENCE SHALL BE INSTALLED AROUND THE PERIMETER OF ALL AND ANY STOCKPILES OF MATERIAL TO BE USED OR REMOVED FROM SITE. (LOCATION TO BE DETERMINED)
7. A VISUAL INSPECTION SHALL BE DONE DAILY ON SEDIMENT CONTROL MEASURES AND CLEANED OF ANY ACCUMULATED SILT AS REQUIRED. THE DEPOSITS WILL BE DISPOSED OFF SITE AS PER THE REQUIREMENTS OF THE CONTRACT.
8. SEDIMENT CONTROL BARRIERS MAY ONLY BE REMOVED TEMPORARILY WITH APPROVAL OF CONTRACT ADMINISTRATOR TO ACCOMMODATE CONSTRUCTION OPERATIONS. ALL AFFECTED BARRIERS MUST BE REINSTATE AT NIGHT WHEN CONSTRUCTION IS COMPLETED. NO REMOVAL WILL OCCUR IF THERE IS A SIGNIFICANT RAINFALL EVENT ANTICIPATED 10mm UNLESS A NEW DEVICE HAS BEEN INSTALLED TO PROTECT EXISTING STREET AND SANITARY SEWER SYSTEMS, OR DOWNSTREAM WATERCOURSES.
9. NO REFUELING OR CLEANING OF EQUIPMENT IS PERMITTED NEAR ANY EXISTING WATERWAY.
10. CONTRACTOR SHALL REMOVE SEDIMENT CONTROL MEASURES WHEN, IN THE OPINION OF THE CONTRACT ADMINISTRATOR, THE MEASURES IS NO LONGER REQUIRED. NO CONTROL MEASURES SHALL BE PERMANENTLY REMOVED WITHOUT PRIOR WRITTEN AUTHORIZATION FROM THE CONTRACT ADMINISTRATOR.
11. THE CONTRACTOR SHALL PERIODICALLY, OR WHEN REQUESTED BY THE CONTRACT ADMINISTRATOR, CLEAN OUT ACCUMULATED SEDIMENTS AS REQUIRED.
12. THE CONTRACTOR SHALL IMMEDIATELY REPORT TO THE ENGINEER ANY ACCIDENTAL DISCHARGES OF SEDIMENT MATERIAL INTO THE WATERCOURSE. APPROPRIATE RESPONSE MEASURES, INCLUDING ANY REPAIRS TO EXISTING CONTROL MEASURES OR THE IMPLEMENTATION OF ADDITIONAL CONTROL MEASURES, SHALL BE CARRIED OUT BY THE CONTRACTOR WITHOUT DELAY.
13. CONTRACTOR SHALL INSTALL MUD MATS AT ENTRANCE TO THE SITE.
14. STORMWATER SWALES TO BE COVERED WITH HYDRO-SEED AND MULCH.
15. C/S ARE TO BE INSPECTED FOLLOWING RAINFALL EVENTS AND ACCUMULATED SEDIMENT IS TO BE REMOVED.
16. CONTRACTOR IS REQUIRED TO REGULARLY CLEAN DEBRIS AND KEEP DUST DOWN ON ALL ROADWAYS AFFECTED BY SITE.

5	ISSUED FOR REVIEW	JP	PM	25.07.21
4	ISSUED FOR REVIEW	JP	PM	25.04.03
3	ISSUED FOR REVIEW	JP	PM	25.01.21
2	ISSUED FOR REVIEW	JP	PM	24.09.13
1	ISSUED FOR REVIEW	JP	PM	24.05.19

Revision By Appd. YY.MM.DD

File Name:	160401789-D8.dwg	JP	PM	JP	24.05.13
		Dwn.	Chkd.	Dsgn.	YY.MM.DD

Permit-Seal

Client/Project
WINDMILL DEVELOPMENT GROUP LTD.

THE EVERGREEN ON BLACKBURN

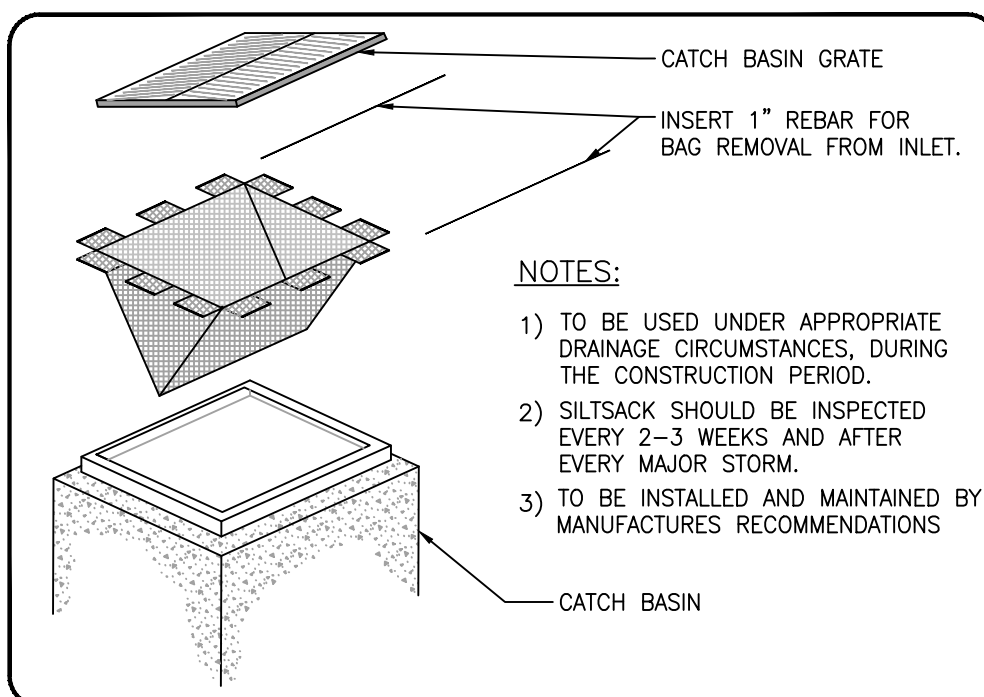
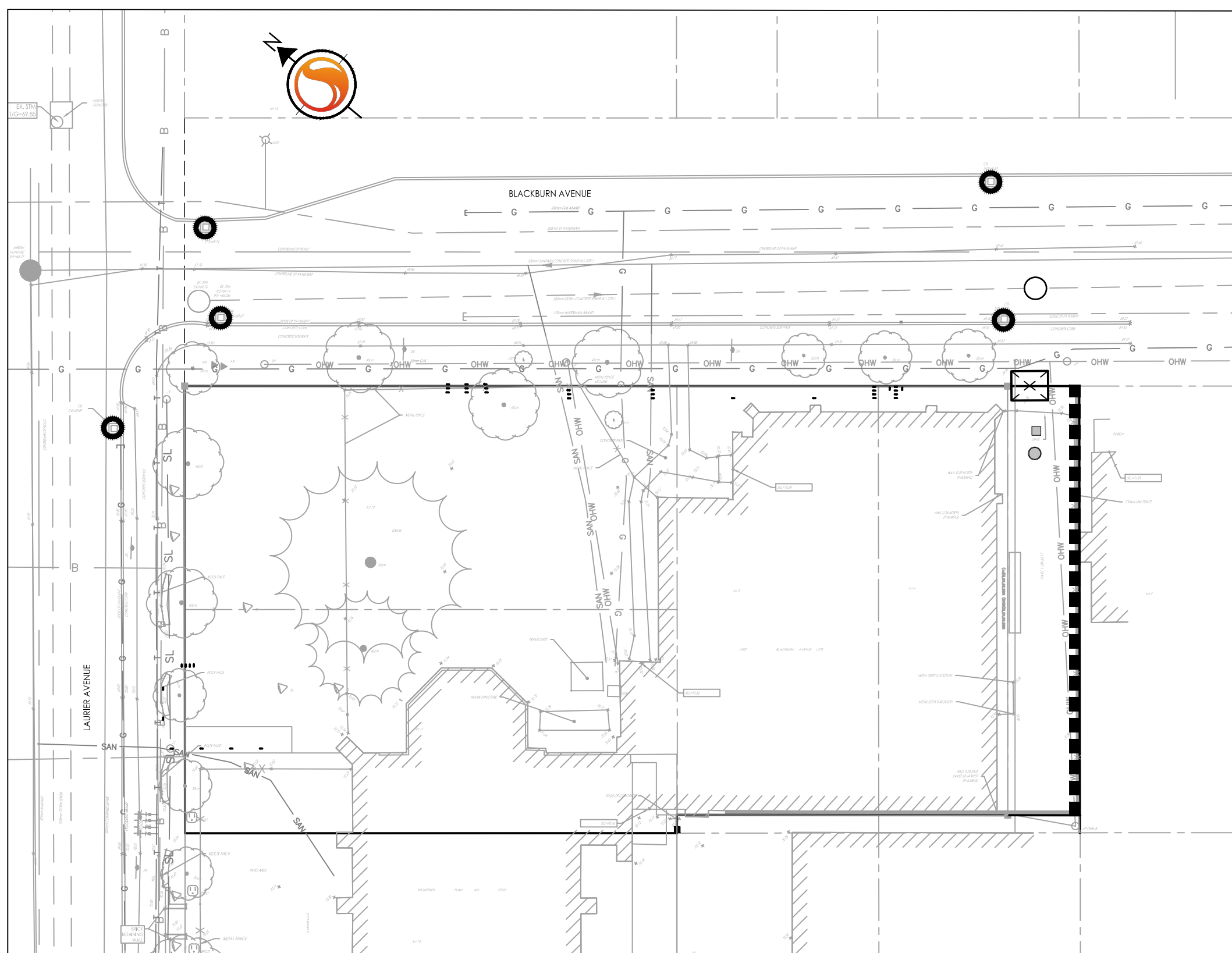
Ottawa, ON

Title

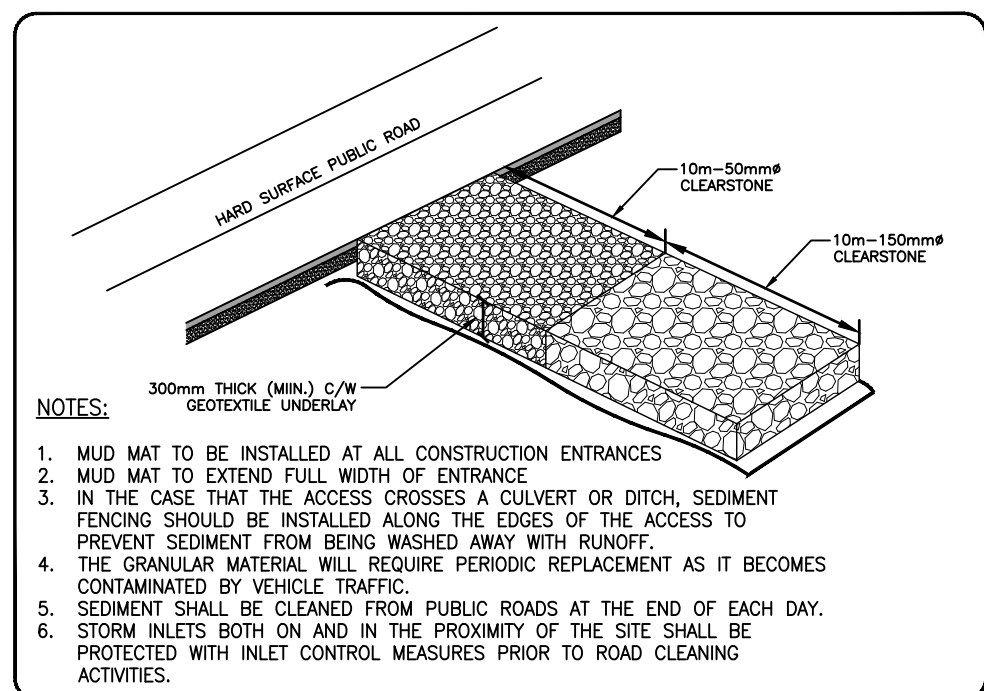
EROSION CONTROL & DETAILS SHEET

Project No.	Scale
160401789	
Drawing No.	Sheet
	Revision

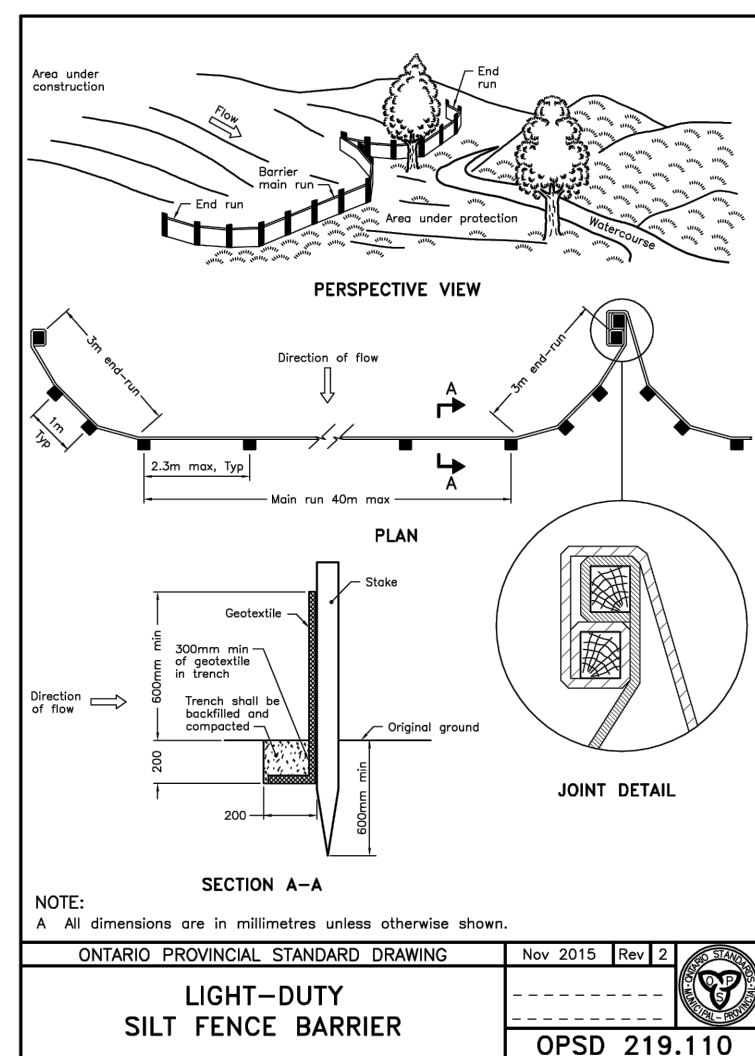
ECDS-1 5 of 7 5 DWG# 19193



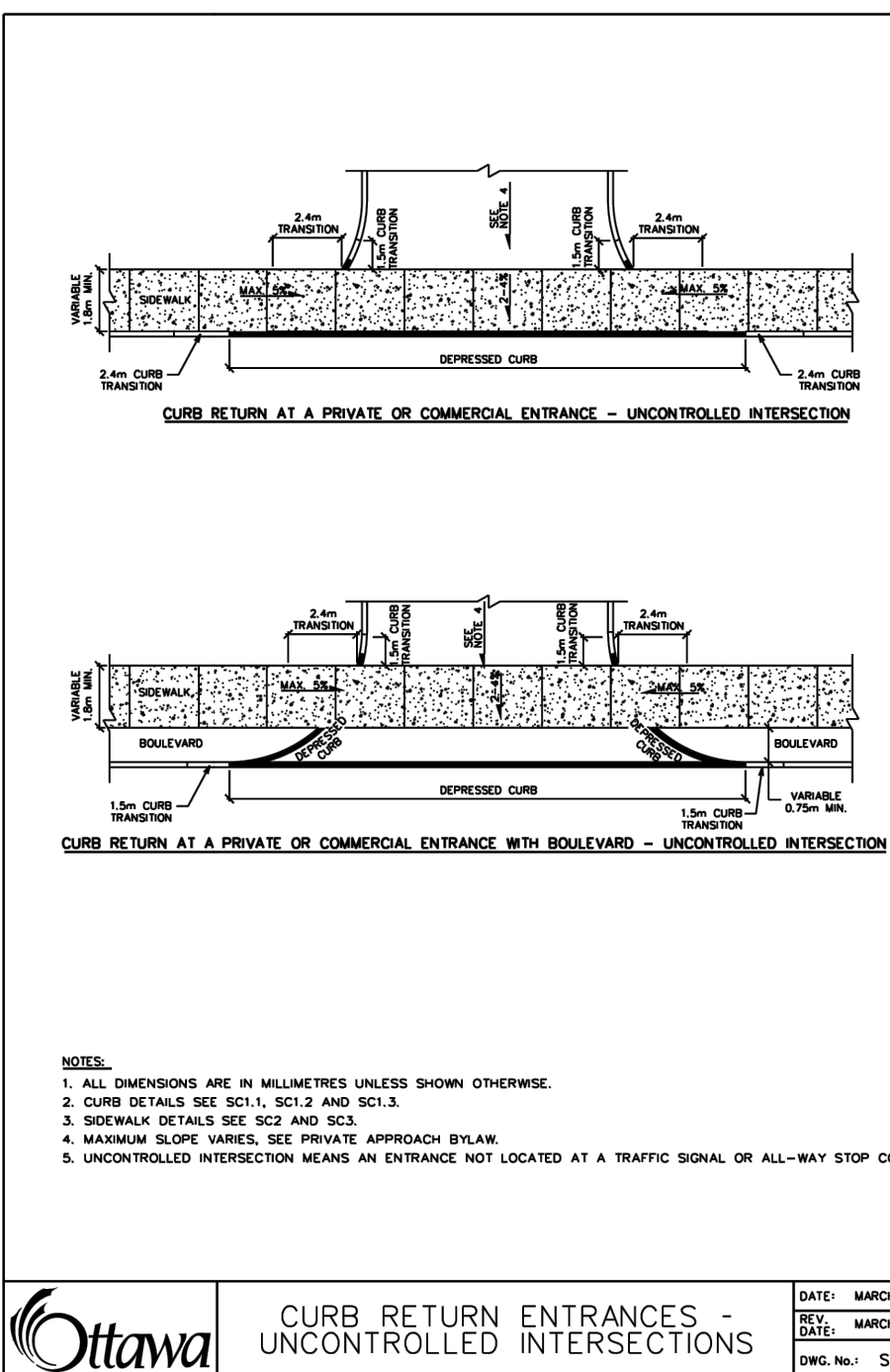
ROADSIDE CATCH BASIN PROTECTION DETAIL: TERRAFIX SILT SACK
SCALE: N.T.S.



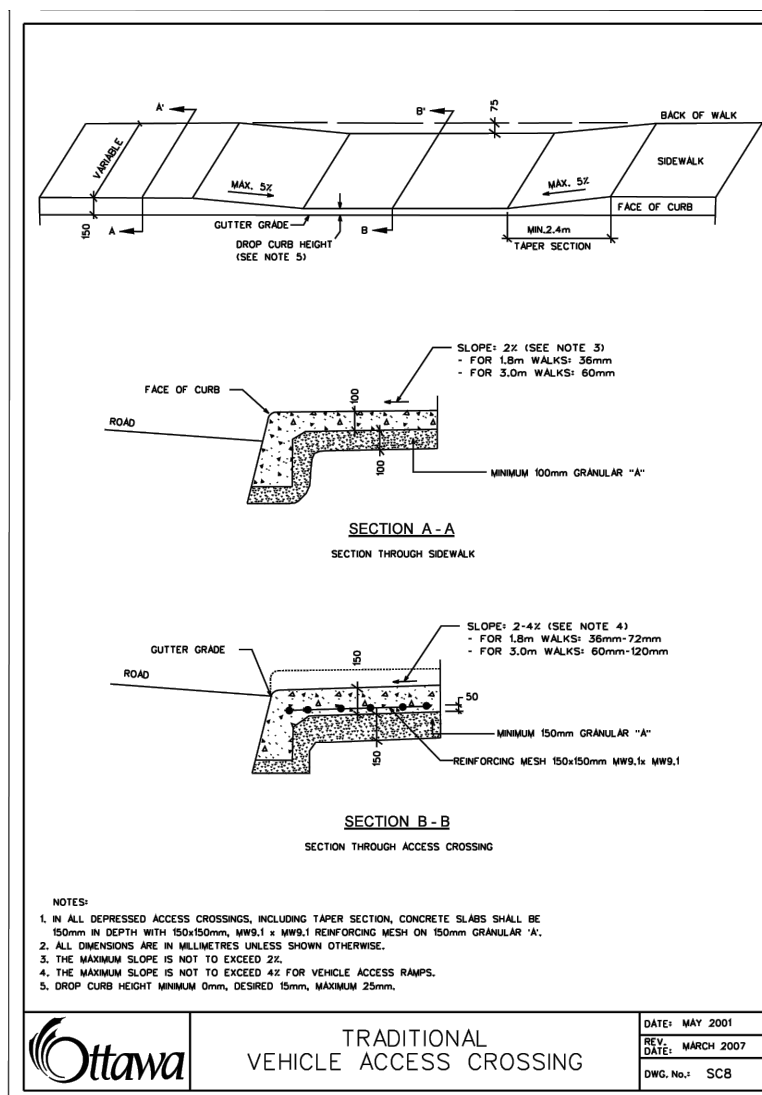
MUD MAT ENTRANCE DETAIL
SCALE: N.T.S.



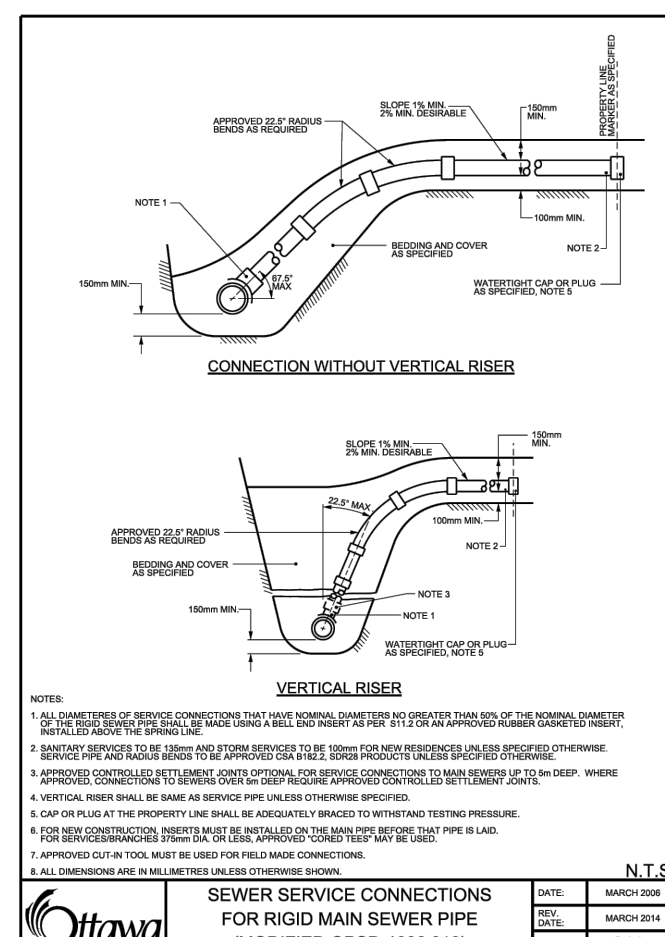
LIGHT-DUTY SILT FENCE BARRIER
OPSD 219.110



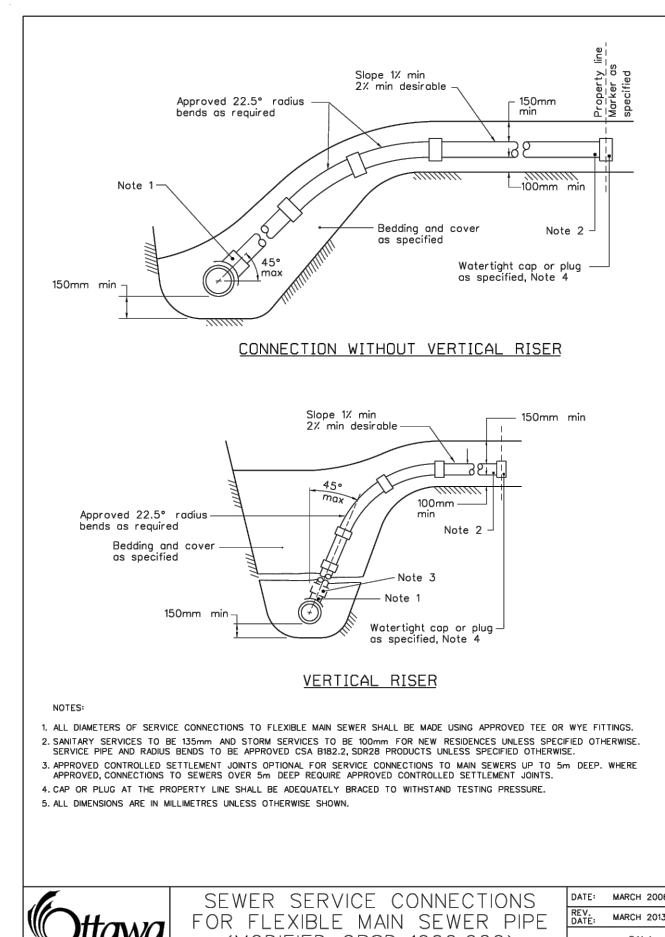
CURB RETURN ENTRANCES - UNCONTROLLED INTERSECTIONS
DATE: MARCH 2007
REV: MARCH 2021
DWG No.: SC7.1



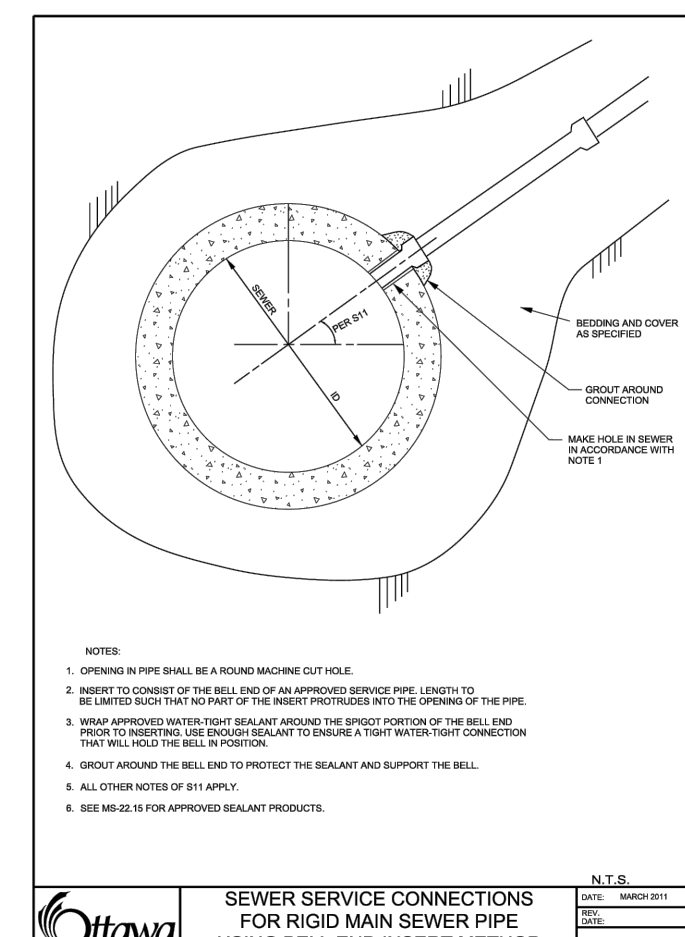
TRADITIONAL VEHICLE ACCESS CROSSING
DATE: MAY 2001
REV: MARCH 2007
DWG No.: SC2



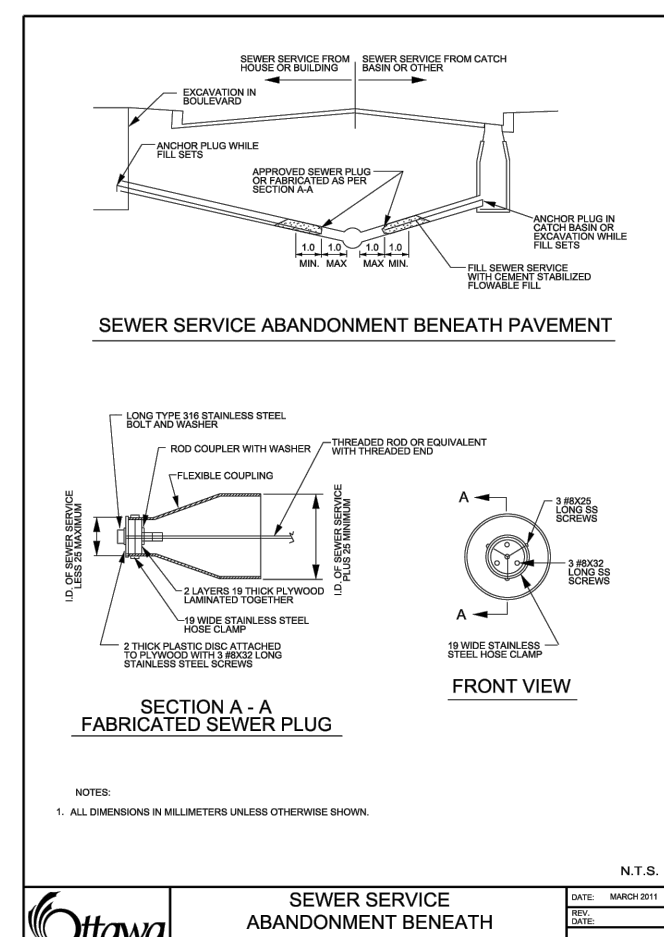
SEWER SERVICE CONNECTIONS FOR RIGID MAIN SEWER PIPE (MODIFIED OPSD-1006.010)
DATE: MARCH 2008
REV: MARCH 2009
DWG No.: S11



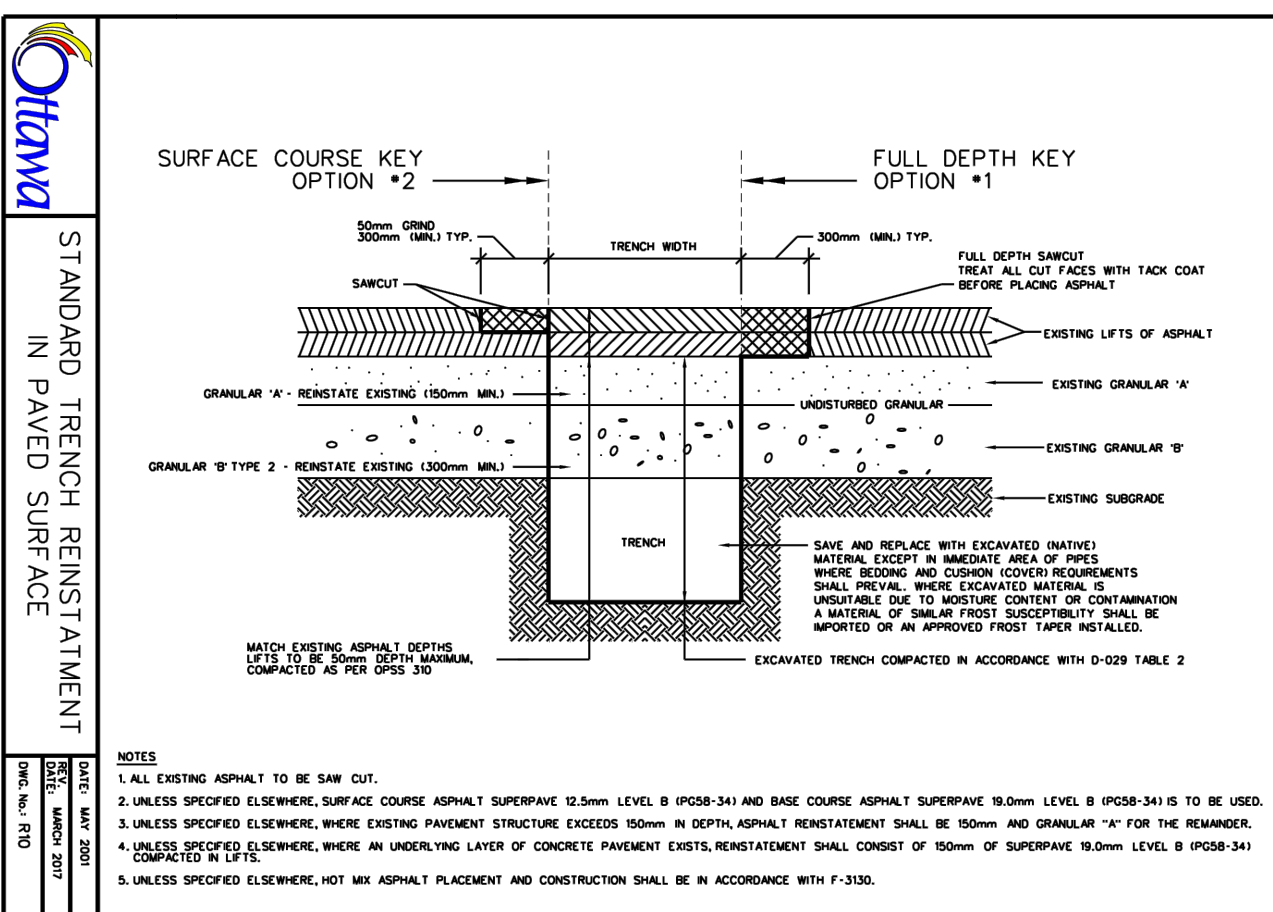
SEWER SERVICE CONNECTIONS FOR FLEXIBLE MAIN SEWER PIPE (MODIFIED OPSD-1006.020)
DATE: MARCH 2008
REV: MARCH 2009
DWG No.: S11.1



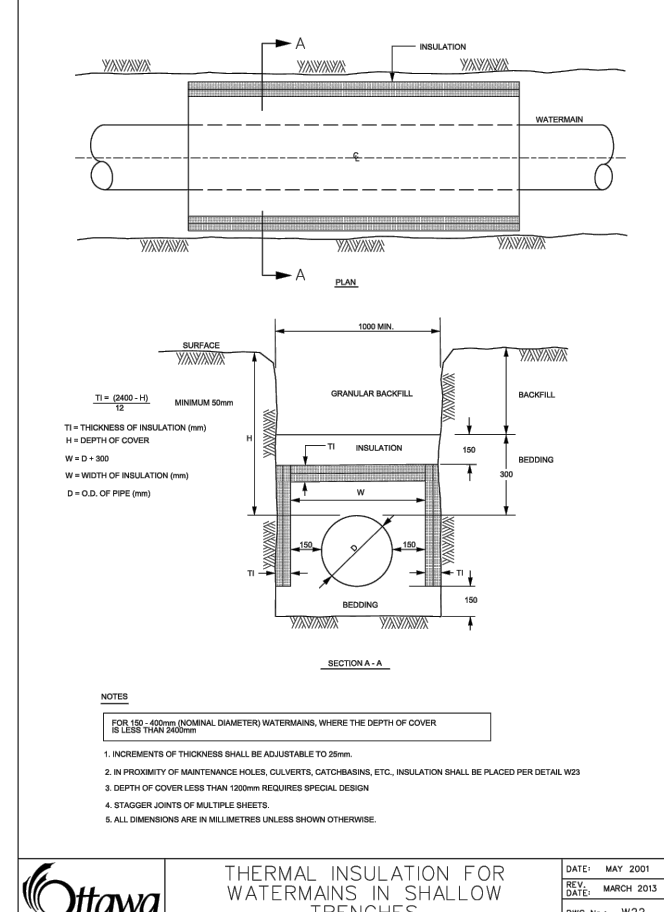
SEWER SERVICE CONNECTIONS FOR RIGID MAIN SEWER PIPE USING BELL END INSERT METHOD
DATE: MARCH 2008
REV: MARCH 2009
DWG No.: S11.2



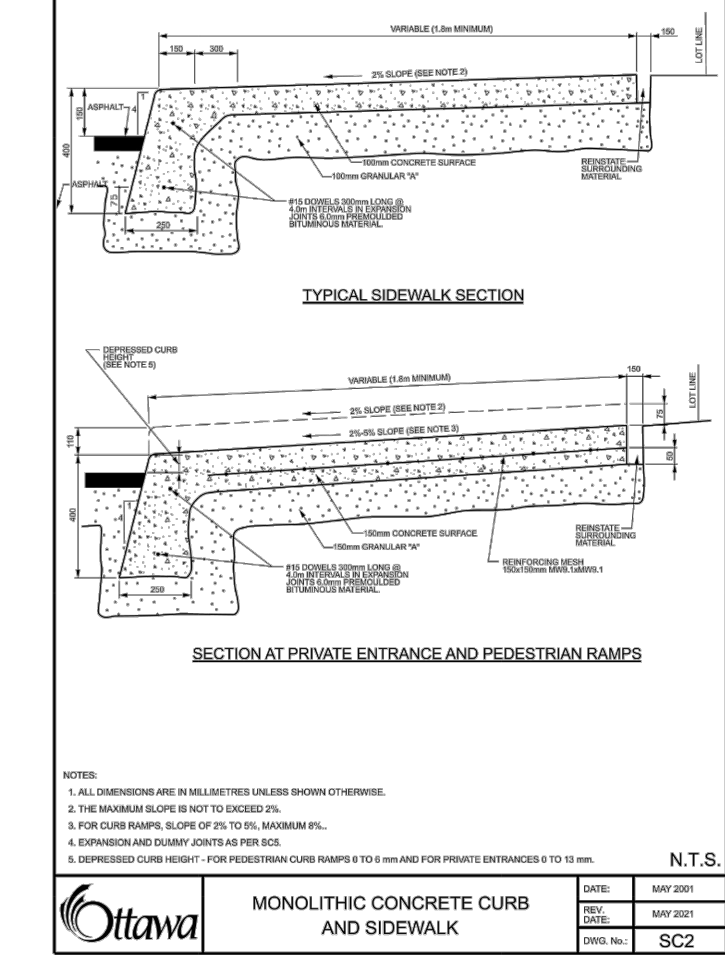
SEWER SERVICE ABANDONMENT BENEATH PAVEMENT
DATE: MARCH 2008
REV: MARCH 2009
DWG No.: S11.3



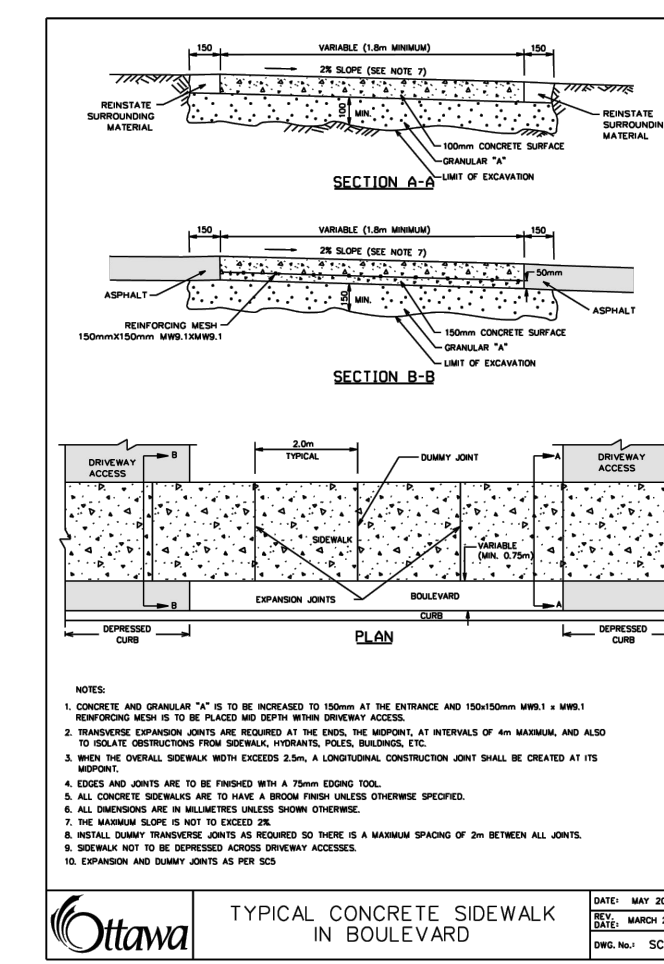
STANDARD TRENCH REINSTATEMENT IN PAVED SURFACE
DATE: MARCH 2007
REV: MARCH 2021
DWG No.: SC7.1



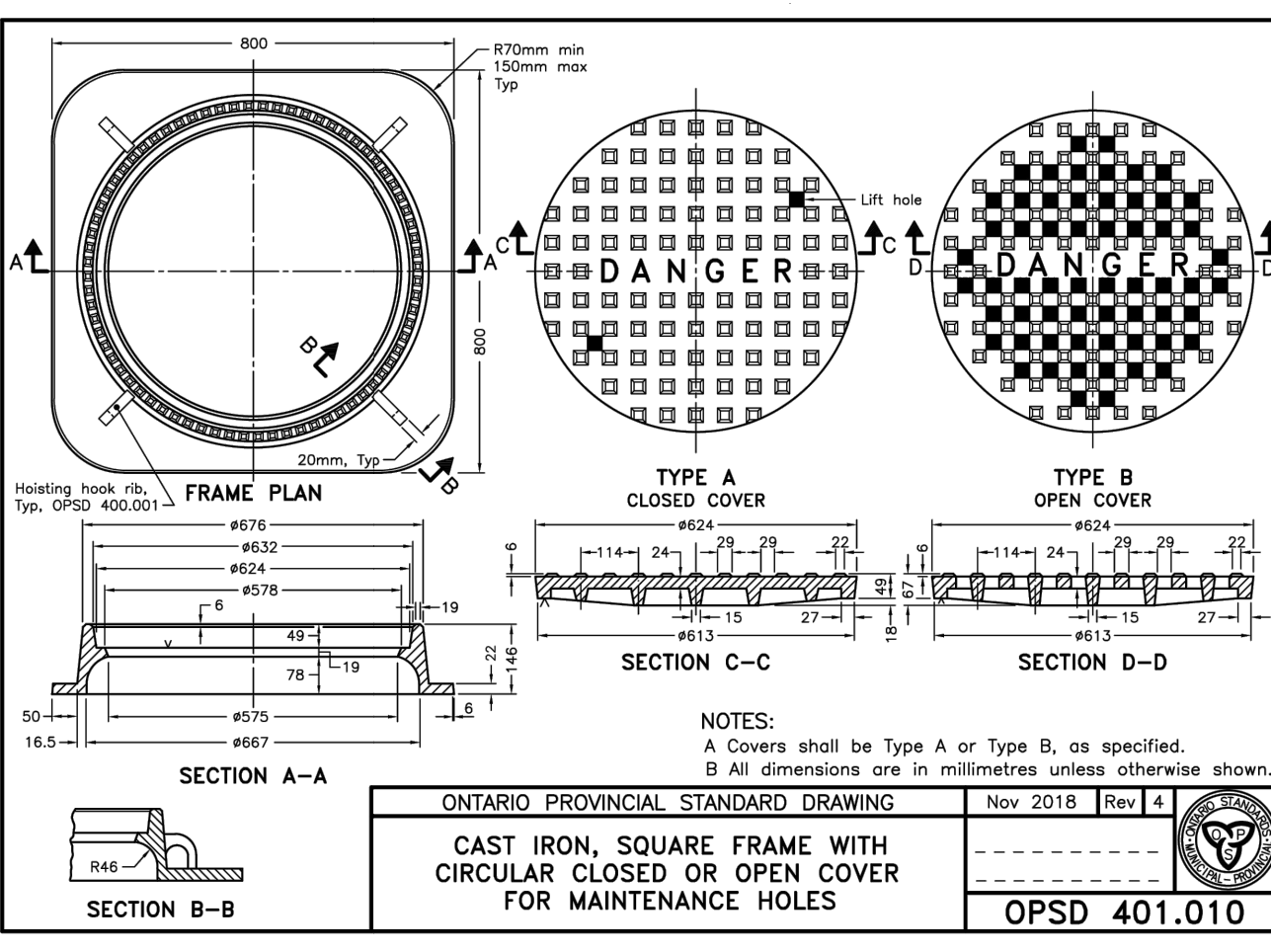
THERMAL INSULATION FOR WATERMAIN IN SHALLOW TRENCHES
DATE: MAY 2001
REV: MARCH 2007
DWG No.: S23



MONOLITHIC CONCRETE CURB AND SIDEWALK
DATE: MAY 2001
REV: MARCH 2007
DWG No.: SC2



TYPICAL CONCRETE SIDEWALK IN BOULEVARD
DATE: MAY 2001
REV: MARCH 2007
DWG No.: SC4



CAST IRON, SQUARE FRAME WITH CIRCULAR CLOSED OR OPEN COVER FOR MAINTENANCE HOLES
DATE: NOV 2018
REV: 4
DWG No.: OPSD 401.010