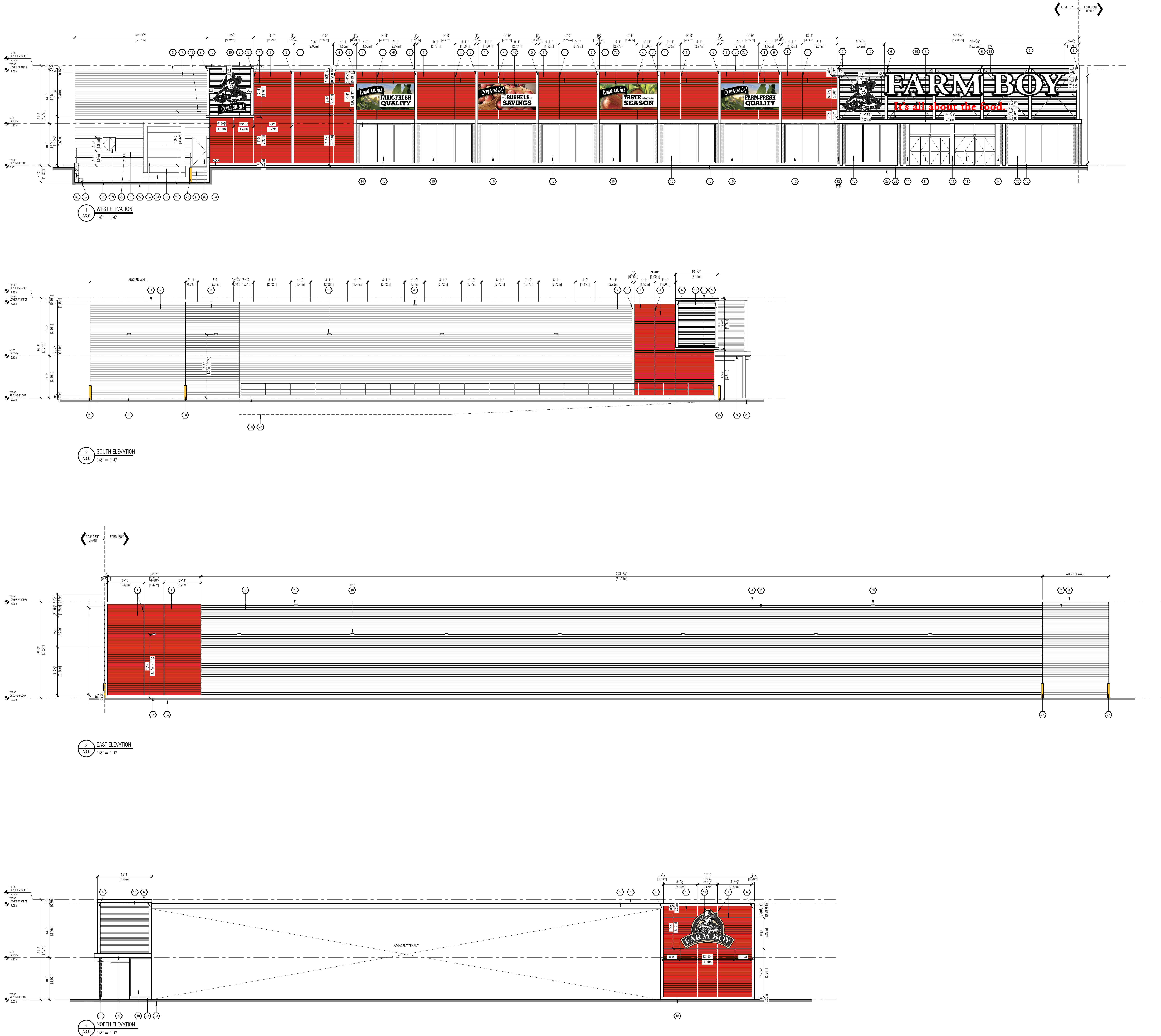


FILE: F:\Farm Boy\2024\240404 - Sobey's Findlay Creek.dwg (User: David, 07/02/2024 07:52:25) A3.0 1/8"=1'-0" (2024.02.15).dwg  
LAST SAVED BY: Madsen, 11/25/2025 5:54 AM



EXTERIOR ELEVATION NOTES	
1.	EXTERIOR DEWASH TO BE SUPPLIED AND INSTALLED BY CLIENTS DEWASH CONTRACTOR. ALL DEWASH IS SHOWN AS APPROXIMATE DIMENSIONS. FINAL SIZE TO BE COORDINATED WITH APPROVED DEWASH PACKAGE.
2.	GENERAL CONTRACTOR TO PROVIDE IF EXTERIOR GRADE FLYWOOD SHEATHING BEHIND THE EXTERIOR CLADDING AND/OR EXTERIOR SIGN IS TO BE INSTALLED. FLYWOOD IS TO BE INSTALLED SUB TO THE EXTERIOR GRADE CLADDING SHEATHING.
3.	ALL GRADES ARE REVIEWED PRIOR TO CONSTRUCTION BY THE GENERAL CONTRACTOR. ALL DISCREPANCIES IN THE GRADES ARE TO BE REPORTED TO GREYSTONE.
4.	VERTICAL AND HORIZONTAL REVEALS BETWEEN COMPOSITE PANELS TO BE 24" IN WIDTH. REVEALS ARE ORIENTED TO THE CENTER LINE. (SEE WALL SECTIONS FOR DETAILS)

EXTERIOR ELEVATION KEYED NOTES	
1	WOOD SIDING SPECIFICATION: PRE-FINISHED HORIZONTAL 1x6 COME MANUFACTURER: CAPS CODE COLOUR: ALUMINUM
2	METAL SIDING SPECIFICATION: 1/2" CORRUGATED METAL SIDING MANUFACTURER: VIKENET OR EQUIVALENT COLOUR: P001 GALVALUME PLUS
3	PRE-FINISHED METAL CAP FLASHING COLOUR: IDEAL ROOFING #8229 'DARK BROWN'
4	PRE-FINISHED METAL CAP FLASHING COLOUR: IDEAL ROOFING #8229 'DARK BROWN'
5	PRE-FINISHED METAL CAP FLASHING COLOUR: IDEAL ROOFING #8229 'DARK BROWN'
6	CONCRETE BLOCK MANUFACTURER: TBC COLOUR: TBC ABOUT: TBC
7	P-C BEAM REVEAL COLOUR: TO MATCH IDEAL ROOFING #8229 'DARK BROWN'
8	P-C BEAM REVEAL COLOUR: TO MATCH IDEAL ROOFING #8229 'DARK BROWN'
9	P-C BEAM REVEAL COLOUR: TO MATCH IDEAL ROOFING #8229 'DARK BROWN'
10	BENT METAL FRAME COLOUR: TO MATCH IDEAL ROOFING #8229 'DARK BROWN'
11	BLACK ANODIZED ALUMINUM FRAMES c/w CLEAR GLAZING - PER OTTAWA WHO ONE DESIGN (SEE NOTE 2) MINIMUM THE TRANSPARENCY AND REFLECTIVITY OF GLAZING (SEE WINDOW SCHEDULE)
12	BLACK ANODIZED ALUMINUM B-PARTING DOOR c/w CLEAR GLAZING (SEE DOOR SCHEDULE)
13	HEAVY TIMBER COLLARS FINISH: FRESH TWO COATS SANGH SGP CUSTOM TINT, ONE COAT SGP TOPCOAT CLEAR
14	WOOD GLAZES FINISH: FRESH TWO COATS SANGH SGP CUSTOM TINT, ONE COAT SGP TOPCOAT CLEAR
15	METAL FINISHING COLOUR: TO MATCH IDEAL ROOFING #8229 'DARK BROWN'
16	CONCRETE SARTING
17	HOLLOW METAL DOOR c/w HOLLOW METAL FRAME (SEE DOOR SCHEDULE) COLOUR: TBC
18	STEEL STAIR LANDING, RAIL AND PICKETS c/w OPEN GRADE TRAILS & CHESLER PLATE INDOORS. ALL TO BE HOT DIPPED GALVANIZED (SEE STRUCTURAL). GENERAL CONTRACTOR IS TO SUBMIT FINISHED ENGINEERING SHOP DRAWINGS.
19	EXTERIOR WALL MOUNTED FLOOD LIGHT FIXTURE (SEE ELECTRICAL). PAINTED COLOUR: DARK GREY
20	ILLUMINATED SIGN NOT SUPPLIED AND INSTALLED BY SIGNAGE VENDOR. GENERAL CONTRACTOR TO PROVIDE ELECTRICAL CONNECTION (SEE ELECTRICAL)
21	ROOF SCUPPER
22	CONCRETE FOUNDATION WALL (SEE STRUCTURAL) COLOUR: NATURAL CONCRETE COLOUR
23	POURED CONCRETE DRIVEWALK
24	FINISHED GRADE
25	PER DEPARTMENT CONNECTION MOUNTED BETWEEN 1'-0" AND 2'-11 1/2" (300mm AND 660mm) A.F.F. (SEE MECHANICAL)
26	NECESSARY NON-FREEZE HOSE BIBS (SEE MECHANICAL)
27	'COME ON IN' BANNER. SUPPLIED AND INSTALLED BY SIGNAGE CONTRACTOR (SEE STRUCTURAL)
28	POURED CONCRETE LOADING RAMP. CURB AND APRON (SEE STRUCTURAL)
29	STEEL BOLLARD c/w CONCRETE FILL COLOUR: YELLOW
30	INSULATED SHARED COMPACTOR ACCESS DOOR c/w PAINTED FINISH (SEE DOOR SCHEDULE) COLOUR: TBC
31	CONCRETE RETAINING WALL w/ GUARD RAIL (SEE STRUCTURAL). GUARD RAIL TO BE HOT DIPPED GALVANIZED. GENERAL CONTRACTOR IS TO SUBMIT SHOP DRAWINGS.
32	CONCRETE PAD FOR COMPACTOR c/w CATCH BASIN (SEE STRUCTURAL AND MECHANICAL). SLOPE PAD TOWARDS CATCH BASIN. TOP OF PAD TO BE MIN. 6" HIGHER THEN LOADING RAMP.
33	DOCK LEVELLER
34	CONCRETE FLOOR OVER POUR. 4" PAST EXTERIOR FACE OF FOUNDATION.
35	PRE-FINISHED INSULATED OVERHEAD SECTIONAL DOOR, SEAL AND BOLLARDS (SEE DOOR SCHEDULE)
36	CONCRETE CORNER (SEE STRUCTURAL)

IT IS THE RESPONSIBILITY OF THE CONTRACTOR TO:

CHECK AND VERIFY ALL DIMENSIONS ON SITE.

REPORT ALL ERRORS AND/OR OMISSIONS TO GREYSTONE BEFORE CONTINUING WITH ANY WORK.

THESE DRAWINGS SHALL NOT BE USED FOR CONSTRUCTION UNLESS NOTED OTHERWISE

THESE DRAWINGS SHALL NOT TO BE SCALED. ERRORS MADE BY PERSONS SCALING THESE DRAWINGS WILL NOT BE THE RESPONSIBILITY OF GREYSTONE ARCHITECTURAL PARTNERS. THESE DRAWINGS SHALL TO BE READ IN CONJUNCTION WITH ALL OTHER RELATED DOCUMENTS.

ALL DESIGN DOCUMENTS ARE THE COPYRIGHT PROPERTY OF GREYSTONE. ANY REPRODUCTIONS OF THE DESIGN DOCUMENTS IN PART OR IN WHOLE IS FORBIDDEN WITHOUT WRITTEN APPROVAL BY GREYSTONE.

Greystone

Cambridge

524 River Street, Suite 100  
Cambridge, Ontario N1R 1P4  
(519) 899-1010 ext.100

Toronto

224 Avenue Road, Suite 200  
Toronto, Ontario M5R 2A3  
(416) 593-0090

07.02.2024

REV.	DESCRIPTION	DATE
△ REVISION	□ ISSUED	○ APPROVAL

CLIENT:

Sobey's

INC.

Mississauga, ON

PROJECT:

FARM BOY

FINDLAY CREEK  
BANK ST. & DUN SKIPPER DR.  
OTTAWA, ONTARIO

DRAWING:

EXTERIOR  
ELEVATIONS

DRAWN:  
A.E.

CHECKED:  
M.V.

JOB NUMBER:  
24343

DATE (YYYYMMDD):  
2025.01.15

SCALE:  
1/8"=1'-0"

DRAWING NUMBER:  
A3.0

REVISION NUMBER:  
R0