

Planting bed no.	Available Soil Area (sq m)	Available Soil Volume (cu m)	No. of trees proposed				Existing trees (Large) (35m <sup>2</sup> )	Total No. of trees	Min. required soil volume total (cu m)
			Small/Column (25m <sup>2</sup> )	Medium (30m <sup>2</sup> )	Large (35m <sup>2</sup> )	Evergreen (30m <sup>2</sup> )			
Planting bed 1	306.2	459.3			4		4	120.0	
Planting bed 2	139.1	208.7	1		2		3	80.0	
Planting bed 3	832.0	1,248.0	6	3	3	3	15	360.0	
Planting bed 4	317.0	475.5	2		2	4	8	200.0	
Planting bed 5	22.4	33.6			1		1	30.0	
Planting bed 6	58.6	87.9			3		3	90.0	
Planting bed 7	28.2	42.3			1		1	30.0	
Planting bed 8	49.7	74.6			2		2	60.0	
Planting bed 9	381.8	572.7	4		9		13	350.0	
Planting bed 10	276.3	414.5	12				12	240.0	
*Planting bed 11	365.5	548.3					19	570.0	

Note: For all planting beds proposed, the available soil depth is considered to be 1.5m.  
 \*Planting bed 11 note: the existing trees retained have access to additional soil volume beyond the north property line.

SIZE OF TREE	AVERAGE MATURE SPREAD	CANOPY COVERAGE PER TREE (m <sup>2</sup> )	QUANTITY OF TREES	TOTAL CANOPY COVERAGE (m <sup>2</sup> )
Deciduous - Medium (7.5-14m tall)	10m	79	3	236
Deciduous - Large (14m+ tall)	15m	177	27	4771
Coniferous	5m	20	7	137

**PROPOSED TOTAL CANOPY COVERAGE (m<sup>2</sup>):** 6954  
**EXISTING RETAINED TOTAL CANOPY COVERAGE (m<sup>2</sup>):** 107  
**TOTAL SITE AREA (m<sup>2</sup>):** 19,273  
**EST. CANOPY COVERAGE (%):** 32%

Area of a circle = (π x r) x π  
 Canopy coverage per tree calculation: (average mature spread/2) x (average mature spread/2) x π

KEY	QTY	BOTANICAL NAME	COMMON NAME	SIZE	COND	SPACING
<b>Coniferous Trees</b>						
LL	2	Larix laricina	Tamarack	200cm Ht	WB	As Shown
PBA	5	Pinus bankiana	Jack Pine	200cm Ht	WB	As Shown
<b>Deciduous Trees</b>						
ARD	15	Acer rubrum 'Red Rocket'	Red Rocket Red Maple	50mm Cal	WB	As Shown
AFS	6	Acer x freemanii 'Sienna'	Sienna Glen Maple	50mm Cal	WB	As Shown
AFM	3	Acer x freemanii 'Celzam'	Celebration Maple	50mm Cal	WB	As Shown
CEL	2	Celtis occidentalis	Hackberry	50mm Cal	WB	As Shown
GTS	3	Gleditsia triacanthos var. inermis 'Shademaster'	Shademaster Honeylocust	50mm Cal	WB	As Shown
MLS	2	Malus 'Spring Snow'	Spring Snow Crabapple	50mm Cal	WB	As Shown
OPP	11	Quercus palustris 'Green Pillar'	Green Pillar Oak	50mm Cal	WB	As Shown
OR	4	Quercus rubra	Red Oak	50mm Cal	WB	As Shown
SO	2	Sorbus americana	American Mountain-Ash	50mm Cal	WB	As Shown
TAB	5	Tilia americana 'Boulevard'	Boulevard Linden	50mm Cal	WB	As Shown
UAP	7	Ulmus americana 'Princeton'	Princeton Elm	50mm Cal	WB	As Shown
<b>Coniferous Shrubs</b>						
Pam	56	Pinus mugo 'Sivomound'	Sivomound Mugo Pine	40cm Spr	PT	80cm O.C.
Jco	45	Juniperus horizontalis 'Plumosa Compacta'	Compact Andorra Juniper	40cm Spr	PT	140cm O.C.
<b>Deciduous Shrubs</b>						
Cah	43	Clethra alnifolia 'Hummingbird'	Hummingbird Summersweet	50cm Ht	PT	100cm O.C.
Dbm	91	Diervilla splendens 'Firefly' (BOKOFIRE)	Firefly Bush Honeysuckle	60cm Ht	PT	80cm O.C.
Poj	78	Physocarpus opulifolius 'JEFAM'	Amber Jubilee Ninebark	60cm Ht	PT	100cm O.C.
Pfe	30	Potentilla fruticosa 'Bella Bellissima' (HACHLUS)	Bella Bellissima Potentilla	40cm Ht	PT	70cm O.C.
Plg	43	Potentilla fruticosa 'Goldfinger'	Goldfinger Potentilla	40cm Ht	PT	80cm O.C.
Rag	51	Rhus aromatica 'Gro-Low'	Gro-Low Fragrant Sumac	60cm Ht	PT	160cm O.C.
<b>Perennials</b>						
acmf	217	Achillea millefolium	Common Yarrow	9cm	PT	45cm O.C.
nwl	303	Nepeta faassenii 'Walker's Low'	Walker's Low Catmint	1g	PT	70cm O.C.
pgm	27	Polygonatum multiflorum	Solomon's Seal	9cm	PT	45cm O.C.
<b>Groundcovers</b>						
gms	110	Geranium macrorrhizum 'Spessart'	Spessart Cranesbill	9cm	PT	45cm O.C.
<b>Ornamental Grasses</b>						
ckf	88	Calamagrostis acutiflora 'Karl Foerster'	Karl Foerster Feather Reed Grass	1g	PT	50cm O.C.
scb	67	Schizachyrium scoparium 'The Blues'	The Blues Little Bluestem	1g	PT	50cm O.C.

Proposed Planting	Ownership	Total
Private		64
City-Owned		3

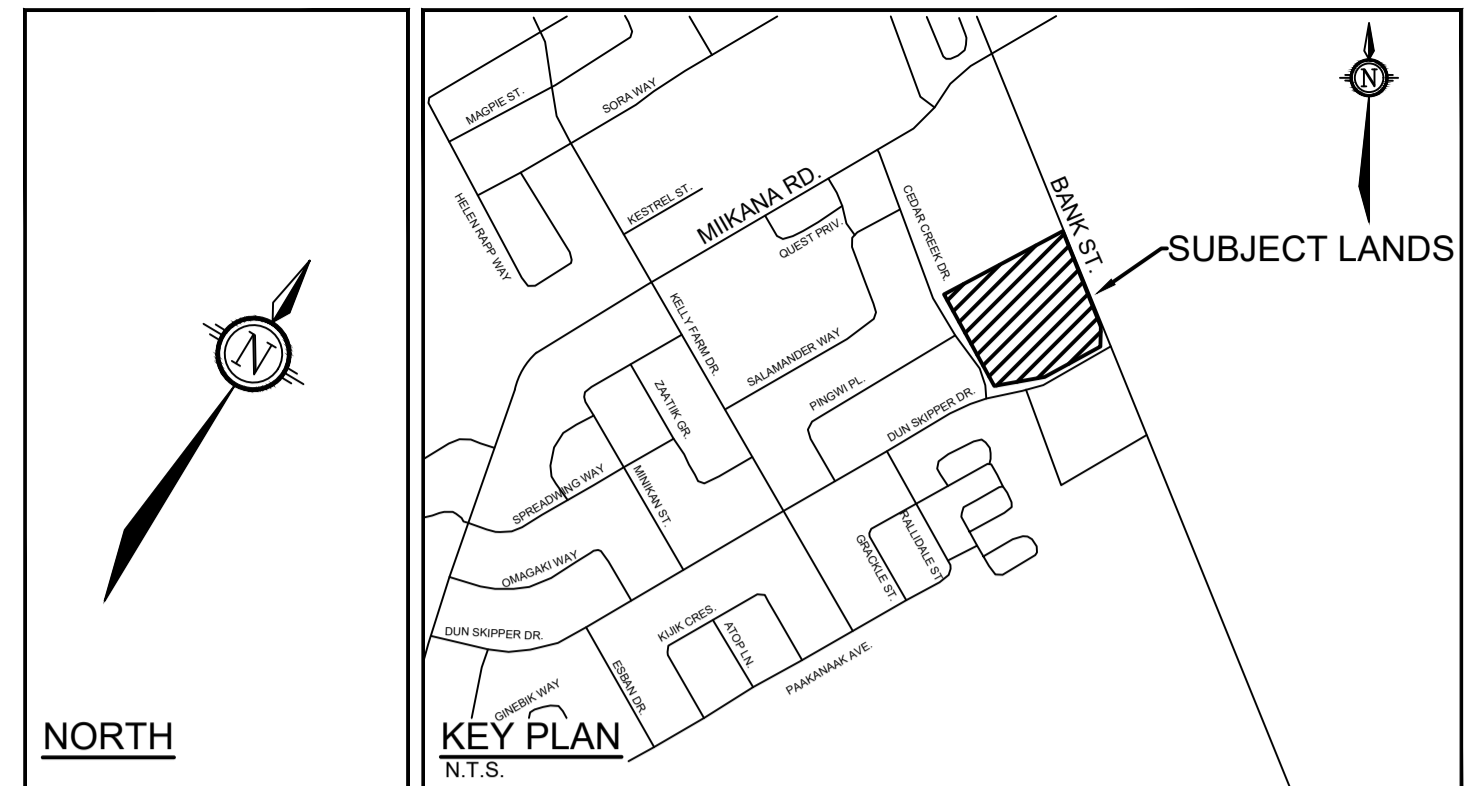
**APPROVED**  
 By Lily Xu at 2:18 pm, Jun 27, 2025

LILY XU, MCIP, RPP  
 MANAGER, DEVELOPMENT REVIEW SOUTH  
 PLANNING, DEVELOPMENT, AND BUILDING SERVICES  
 DEPARTMENT, CITY OF OTTAWA

**CITY DETAILS**  
 Related details from City of Ottawa Standard Tender Documents  
 Volume No. 2 Standard Detail Drawings.

SCA Typical Concrete Sidewalk in Boulevard  
 SCS Sidewalk Construction Joints

**HYDRO OTTAWA DETAILS**  
 GCS0038 Root Barrier Detail, for trees in proximity to HydroOttawa u/g structures



**LEGEND**

- 3-D1 DETAIL SHEET # NOVATECH OR CITY DETAIL NUMBER SEE LIST FOR CODE
- PROPERTY LIMIT
- PROPOSED CONCRETE
- PROPOSED PAVERS
- RIVER STONE
- PERENNIALS
- ORNAMENTAL GRASSES
- SEED
- PROPOSED DECIDUOUS TREE
- PROPOSED CONIFEROUS TREE
- EXISTING TREE TO REMAIN, SEE TREE CONSERVATION REPORT
- RETAINED EXISTING TREE CANOPY COVER WITHIN THE SITE, PER AERIAL MAP
- PROPOSED SHRUBS (SEE PLANT LIST)
- QUANTITY (SEE PLANT LIST)
- PROPOSED WOOD PRIVACY FENCE
- TREE PROTECTION FENCE, SEE TCR
- BIKE RACK, SEE DETAIL D6
- PLANTER
- BOULDERS FROM EXISTING PILE ON SITE, SEE TCR FOR LOCATION
- LIGHT FIXTURES, SEE ELECTRICAL DRAWINGS
- ROOT BARRIER - REFER TO HYDRO OTTAWA DETAIL GCS0038

**NOVATECH DETAILS**

- Found on Sheet L2.
- D1 Standard Deciduous Tree Planting
  - D2 Standard Coniferous Tree Planting
  - D3 Shrub and Perennial Planting
  - D4 Shrub and Perennial Planting with Riverstone
  - D5 Wood Screen Detail
  - D6 Bike Layout
  - D7 Boulder Detail

**PRODUCT INFORMATION**

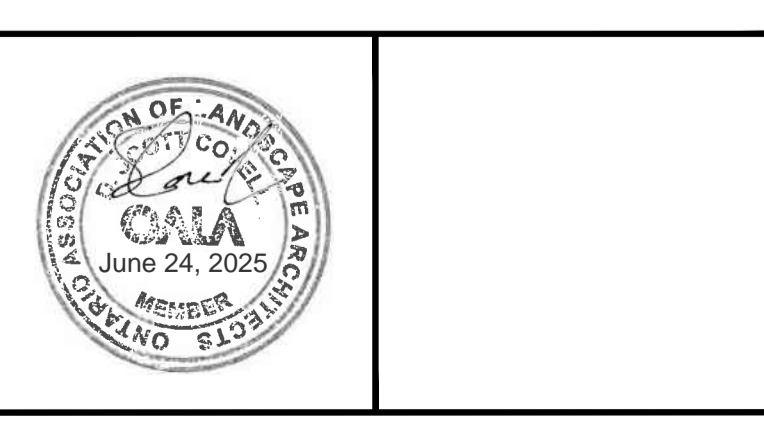
- Install products as per manufacturer specifications. Shop drawings required.
- PAVERS**  
 Edge of pavers to receive edge restraint.  
 • Blu 60 Smooth by Techo-bloc  
 Location: Patio on East side of Building C  
 Size: 60mm HD - All sizes  
 Pattern: Modular Pattern 01  
 Colour: Greyed Nickel
- RETAINING WALL**  
 • Skyscraper by Techo-bloc  
 Location: South side of Building C  
 Pattern: Linear  
 Colour: Shale Grey
- SITE FURNITURE**  
 Fasten all site furnishing to surface with stainless steel anti-vandal anchors.  
 • 200 Bike Racks by Maglin  
 Product Number: MBR-0200-00005  
 Mounting Type: Surface Mount  
 Colour: Powdercoat Saffron Yellow RAL1017

**NOTE:**  
 THE POSITION OF ALL POLE LINES, CONDUITS, WATERMANS, SEWERS AND OTHER UNDERGROUND AND OVERGROUND UTILITIES AND STRUCTURES IS NOT NECESSARILY SHOWN ON THE CONTRACT DRAWINGS, AND WHERE SHOWN, THE ACCURACY OF THE POSITION OF SUCH UTILITIES AND STRUCTURES IS NOT GUARANTEED. BEFORE STARTING WORK, DETERMINE THE EXACT LOCATION OF ALL SUCH UTILITIES AND STRUCTURES AND ASSUME ALL LIABILITY FOR DAMAGE TO THEM.

No.	REVISION	DATE	BY
9	REVISED TRANSFORMER LOCATION	JUN 23/25	SC

No.	REVISION	DATE	BY
8	REVISED PER BUILDING PERMIT COMMENTS	JUN 19/25	SC
7	ISSUED FOR TENDER	APR 24/25	SC
6	ISSUED FOR FINAL APPROVAL	MAR 26/25	SC
5	REVISED PER CITY COMMENTS	FEB 26/25	SC
4	REVISED PER CITY COMMENTS	JAN 13/25	SC
3	REVISED PER COMPLETENESS COMMENTS	DEC 6/24	SC
2	ISSUED FOR SITE PLAN APPLICATION	OCT 24/24	RGJ
1	PHASE 2 PRE-CONSULTATION	AUG 6/24	RGJ

DESIGN	SCALE
KEW	1:400
KEW	1:400
KEW/TB	1:400
TB	1:400
SC	1:400

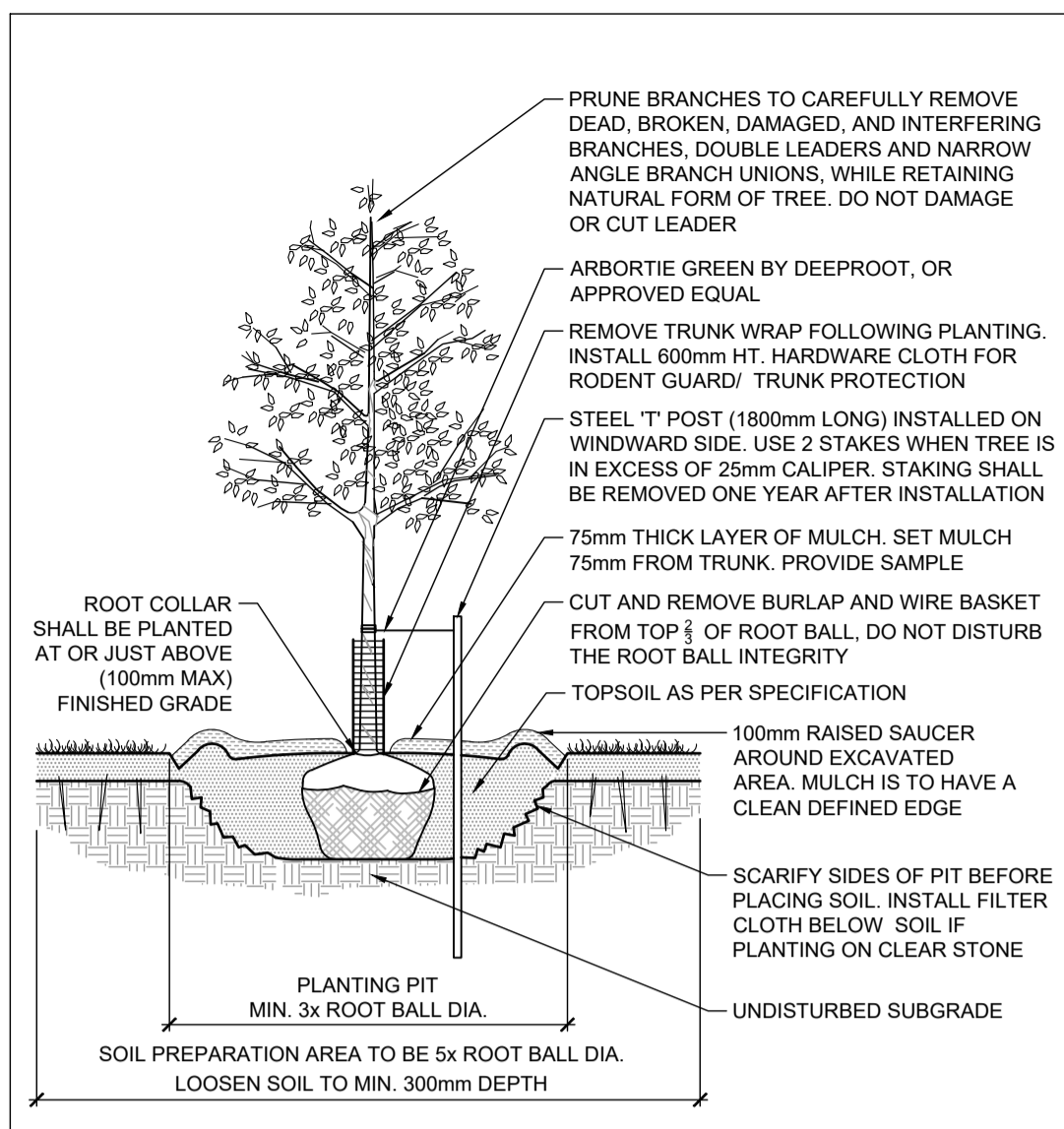


**NOVATECH**  
 Engineers, Planners & Landscape Architects  
 Suite 200, 240 Michael Cowpland Drive  
 Ottawa, Ontario, Canada K2M 1P6  
 Telephone: (613) 254-9643  
 Facsimile: (613) 254-5867  
 Website: www.novatech-eng.com

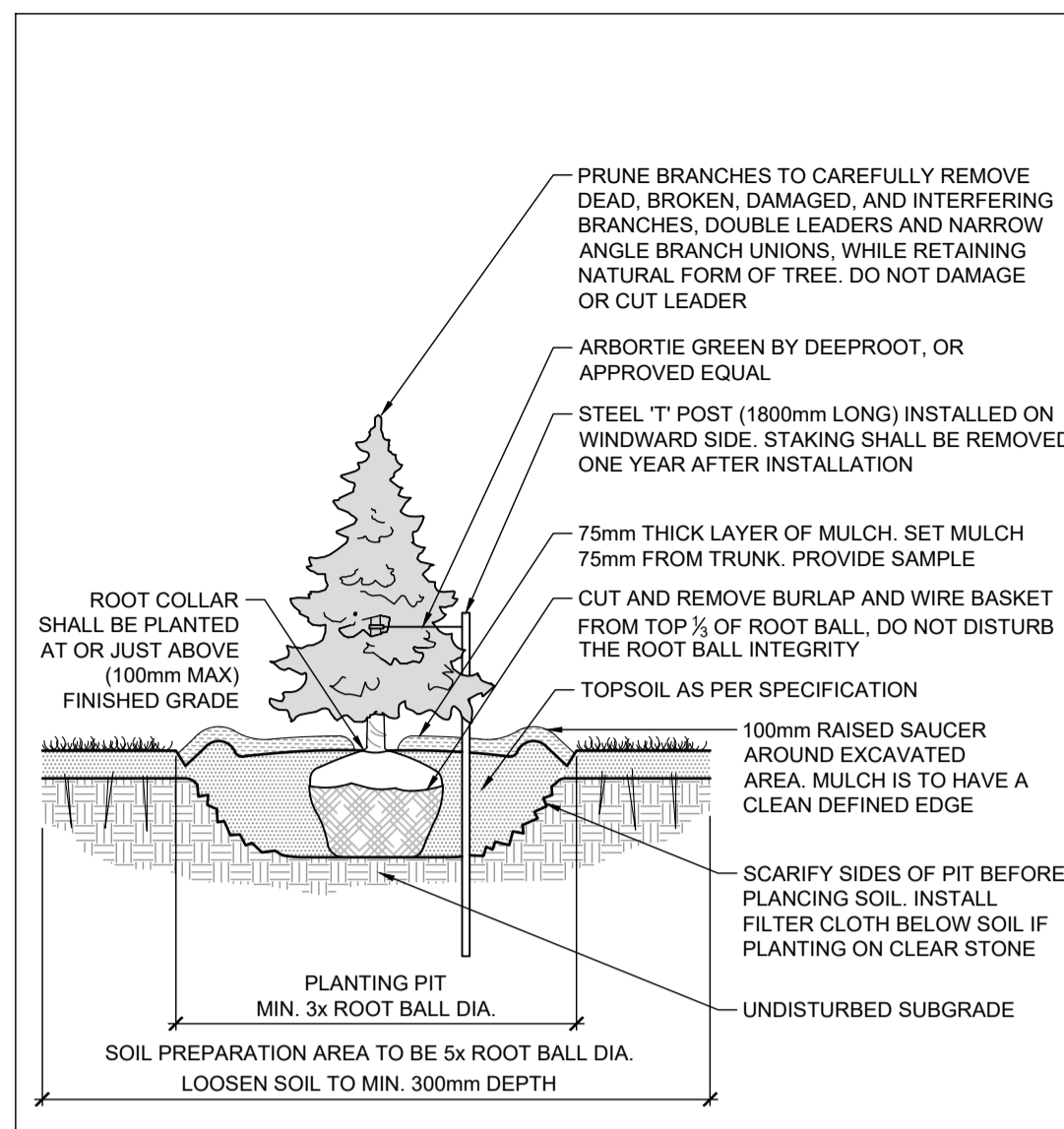
LOCATION	CITY OF OTTAWA
150 DUN SKIPPER DRIVE	
DRAWING NAME	LANDSCAPE PLAN
PROJECT No.	124107-00
REV	REV # 9
DRAWING No.	124107-L1

M:\2024\124107\CAD\landscape\124107\_L1.dwg (Landscape) - commercial, Jun 23, 2025, 4:11pm, barikale

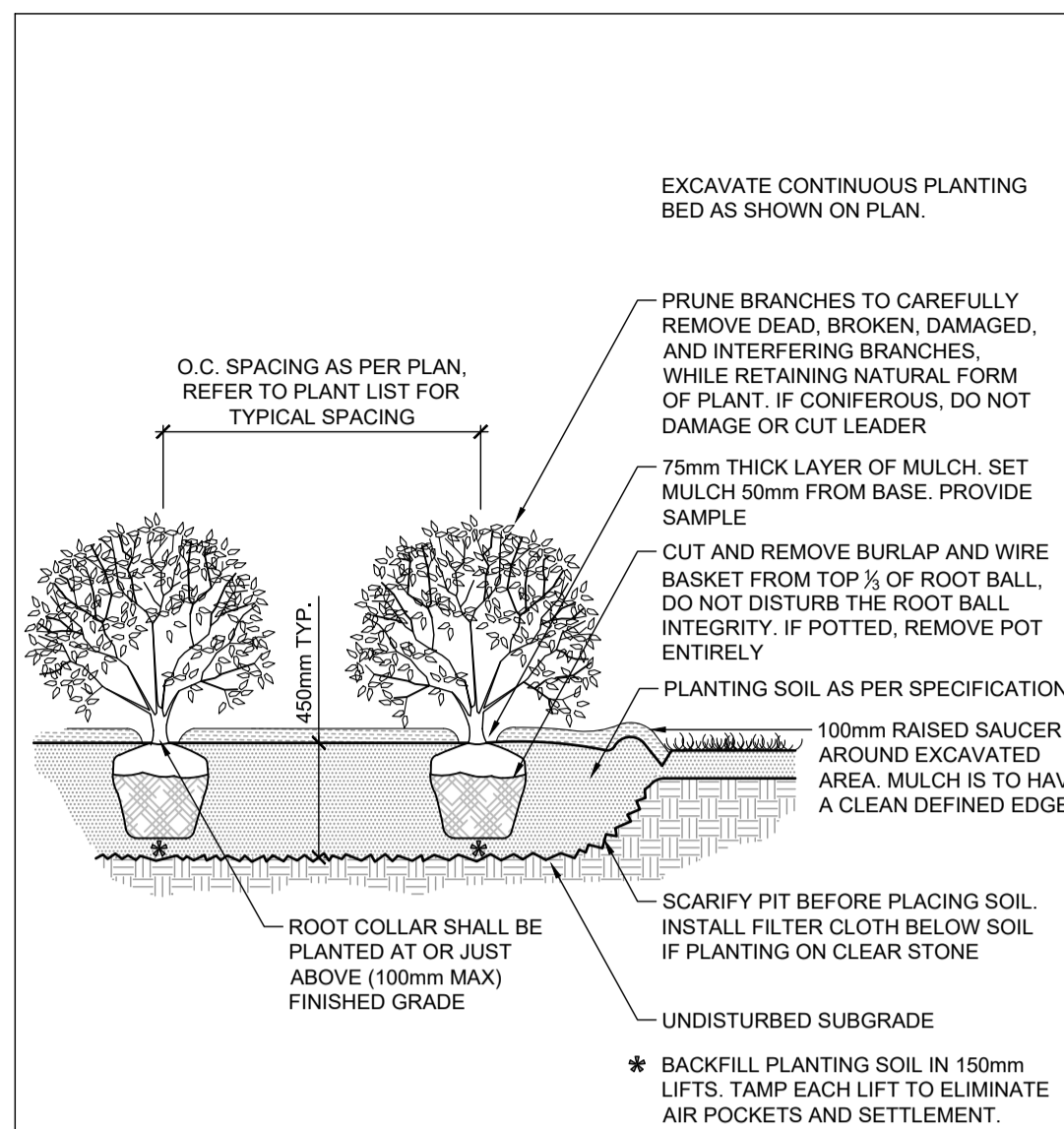




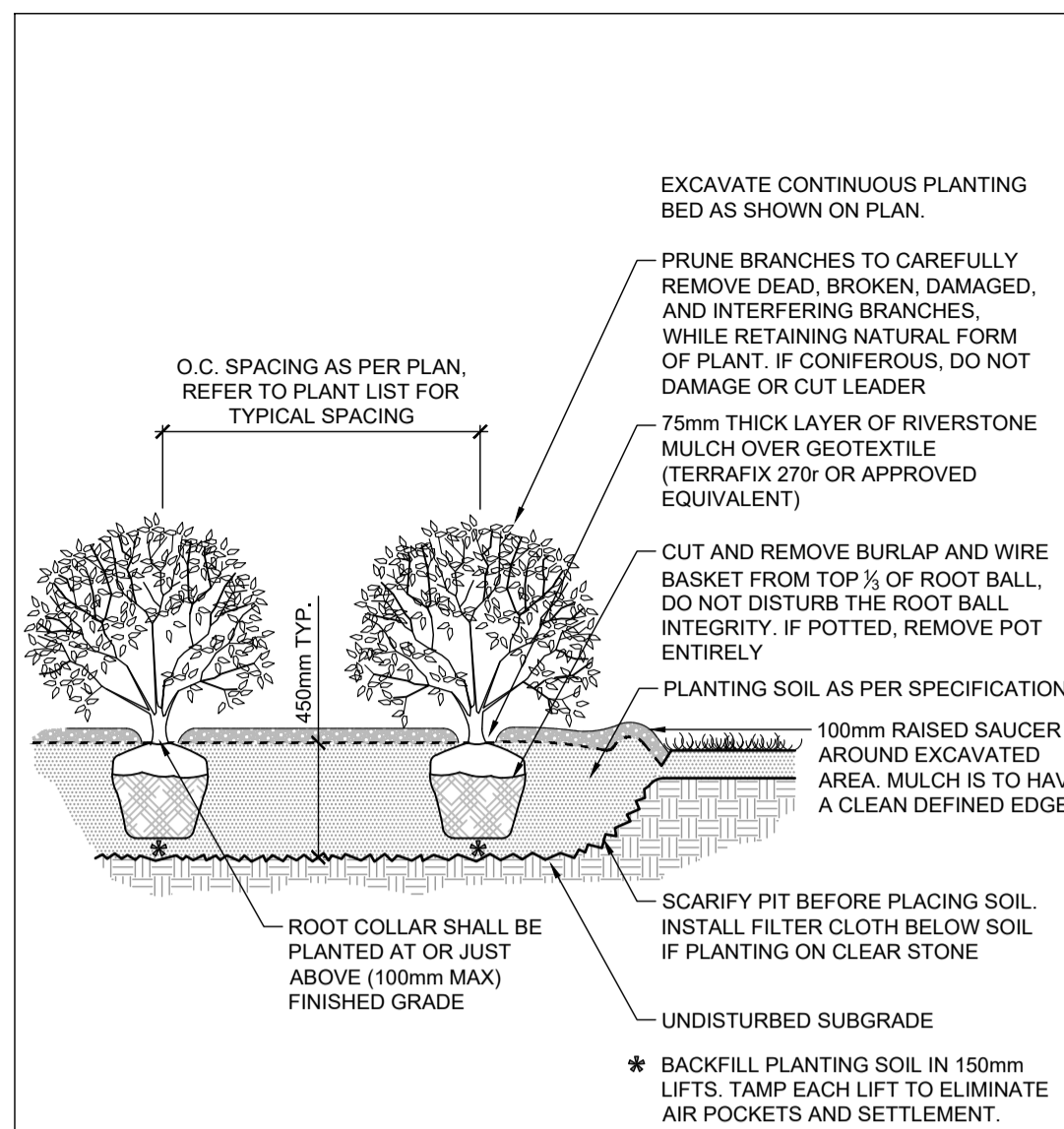
STANDARD DECIDUOUS TREE PLANTING **D1**



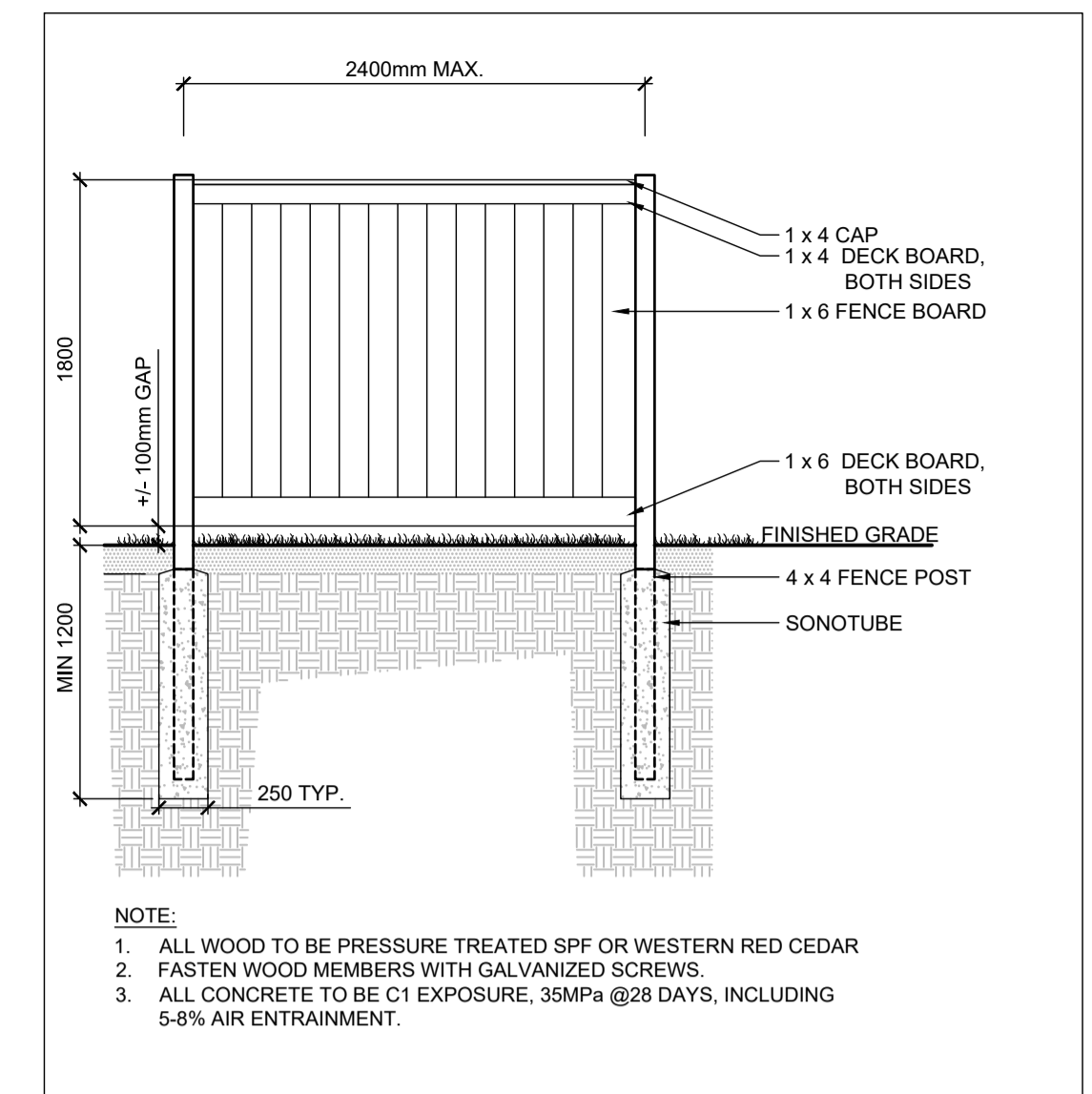
STANDARD CONIFEROUS TREE PLANTING **D2**



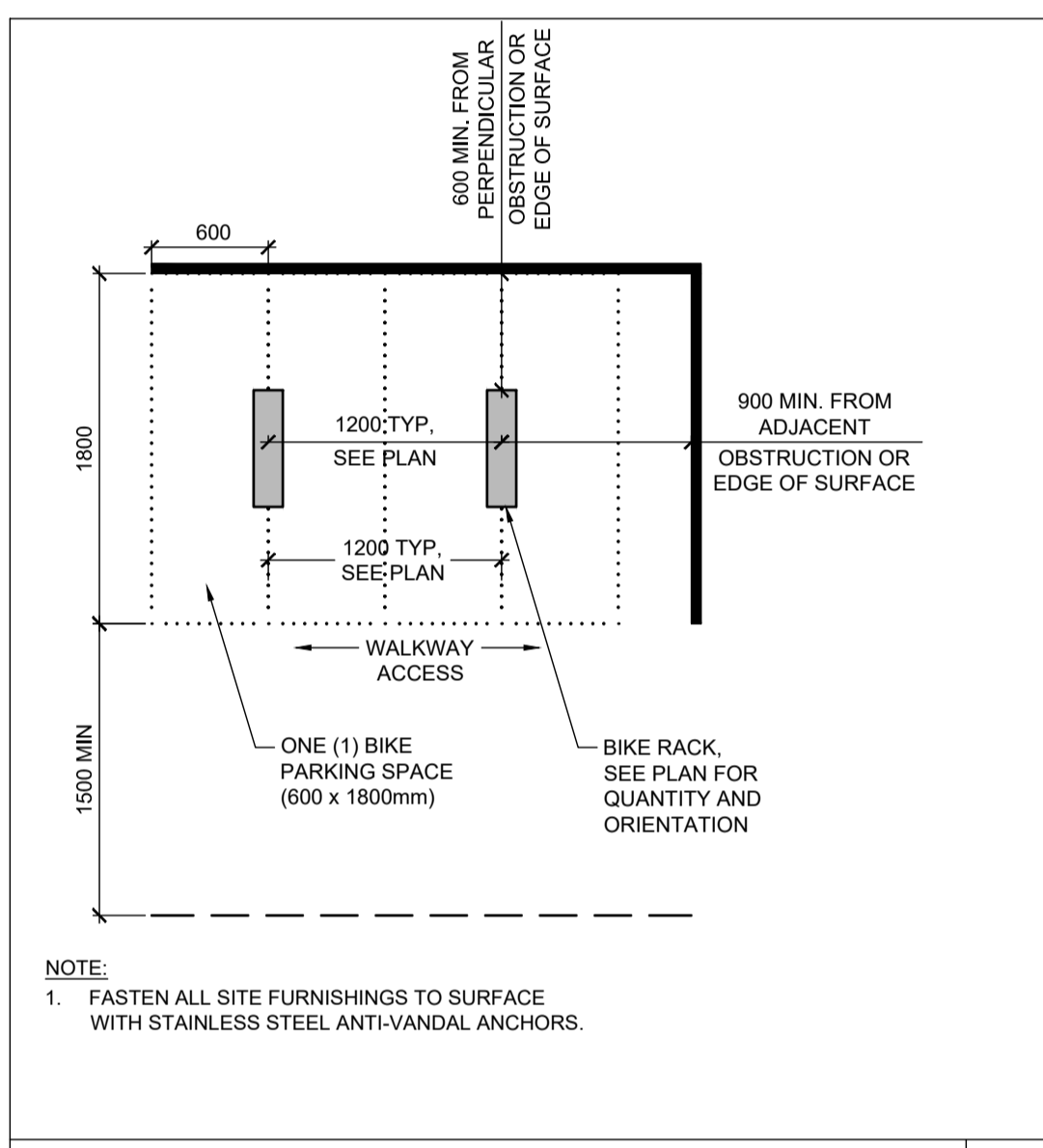
SHRUB AND PERENNIAL PLANTING **D3**



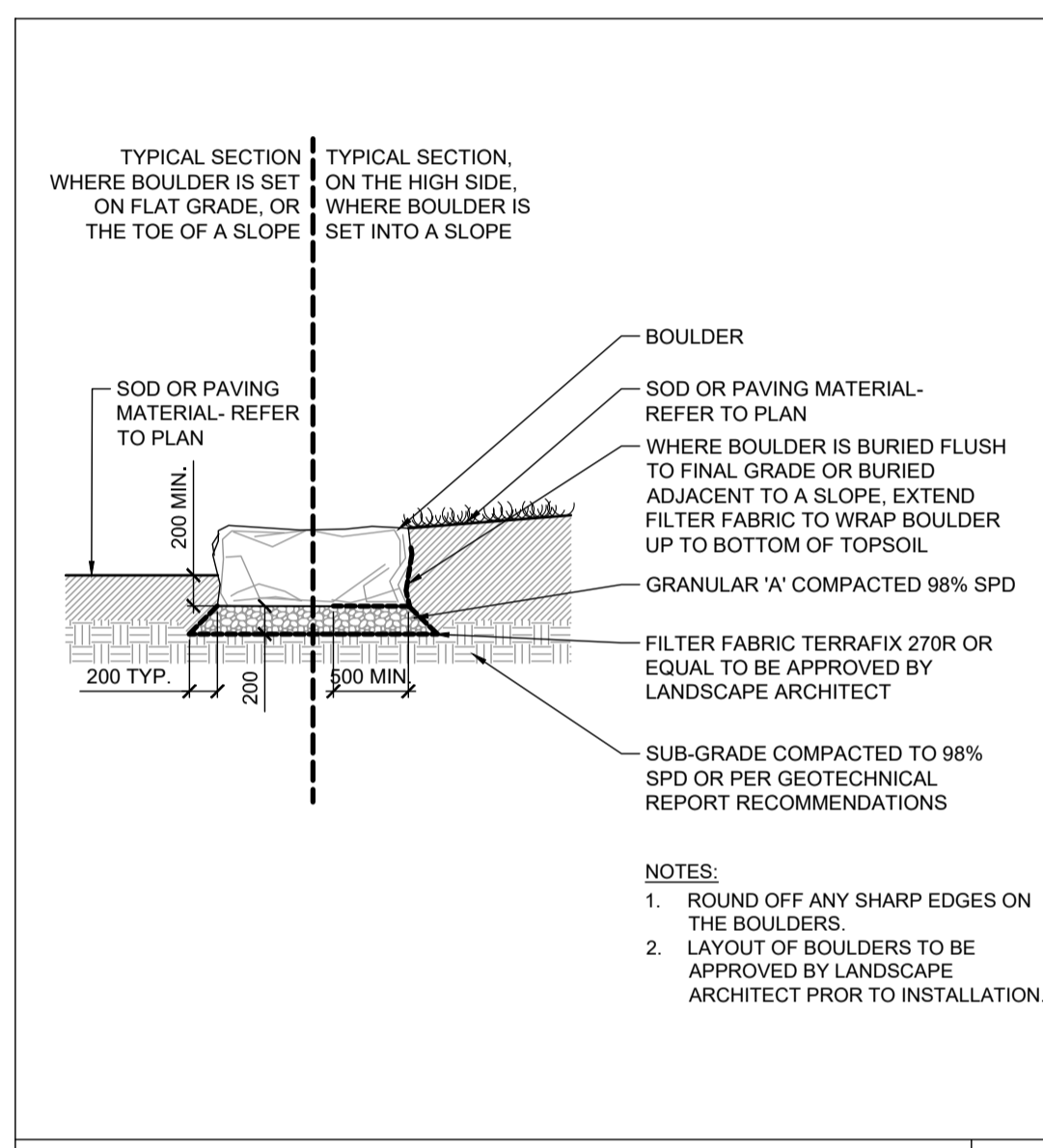
SHRUB AND PERENNIAL PLANTING WITH RIVERSTONE **D4**



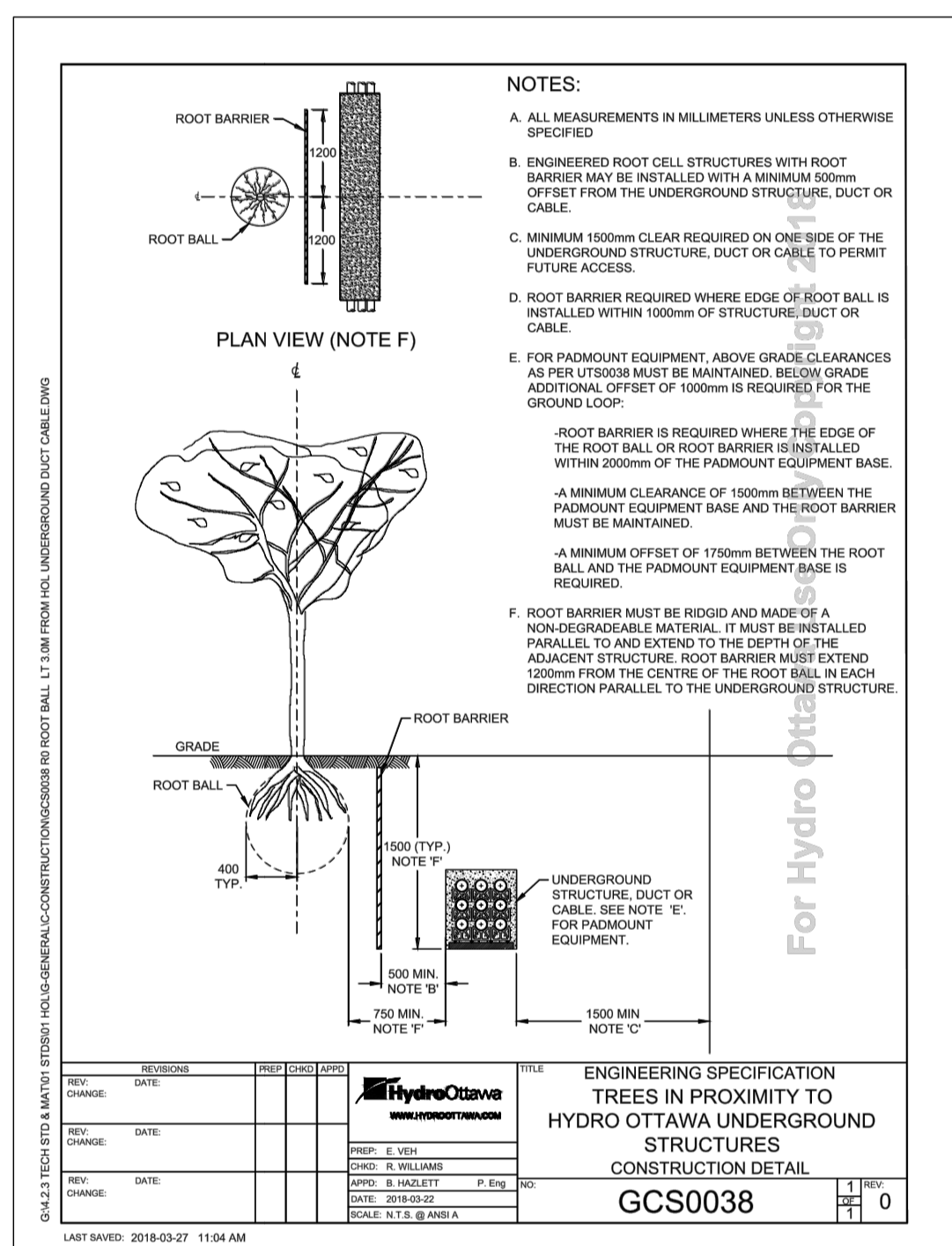
WOOD SCREEN DETAIL **D5**



BIKE LAYOUT **D6**



BOULDER **D7**



ENGINEERING SPECIFICATION  
TREES IN PROXIMITY TO  
HYDRO OTTAWA UNDERGROUND  
STRUCTURES  
CONSTRUCTION DETAIL  
GCS0038

**APPROVED**  
By Lily Xu at 2:18 pm, Jun 27, 2025

*[Signature]*  
**LILY XU, MCIP, RPP**  
MANAGER, DEVELOPMENT REVIEW SOUTH  
PLANNING, DEVELOPMENT, AND BUILDING SERVICES  
DEPARTMENT, CITY OF OTTAWA

**DISCLAIMER**  
The elements on this plan illustrate the design intent and general constructability of the proposed landscape which will support the associated development. This is to demonstrate how the canopy cover, urban design, health, and climate change objectives of the Official Plan will be met through tree planting and site design. This drawing is for City review only and is not intended for construction. Final detailed design and construction documentation is to be provided with certified 'Issued for Construction' drawings and specifications prior to construction.

**NOTE:**  
THE POSITION OF ALL POLE LINES, CONDUITS, WATERMANS, SEWERS AND OTHER UNDERGROUND AND OVERGROUND UTILITIES AND STRUCTURES IS NOT NECESSARILY SHOWN ON THE CONTRACT DRAWINGS, AND WHERE SHOWN, THE ACCURACY OF THE POSITION OF SUCH UTILITIES AND STRUCTURES IS NOT GUARANTEED. BEFORE STARTING WORK, DETERMINE THE EXACT LOCATION OF ALL SUCH UTILITIES AND STRUCTURES AND ASSUME ALL LIABILITY FOR DAMAGE TO THEM.

**Owner:**  
Bank & Dun Developments Inc.  
c/o Paul Pagliarunga  
209 Wicksteed Avenue, Suite 30  
Toronto, ON, M4G 0B1  
Phone: (416) 335-0090

No.	REVISION	DATE	BY
8.	REVISED TRANSFORMER LOCATION	JUN 23/25	SC
7.	REVISED PER BUILDING PERMIT COMMENTS	JUN 19/25	SC
6.	ISSUED FOR TENDER	APR 24/25	SC
5.	ISSUED FOR FINAL APPROVAL	MAR 28/25	SC
4.	REVISED PER CITY COMMENTS	FEB 26/25	SC
3.	REVISED PER CITY COMMENTS	JAN 13/25	SC
2.	REVISED PER COMPLETENESS COMMENTS	DEC 8/24	SC
1.	ISSUED FOR SITE PLAN APPLICATION	OCT 24/24	RGJ

DESIGN	KEYW
CHECKED	KEYW
DRAWN	KEYW/TB
CHECKED	TB
APPROVED	SC



**NOVATECH**  
Engineers, Planners & Landscape Architects  
Suite 200, 240 Michael Cowpland Drive  
Ottawa, Ontario, Canada K2M 1P6  
Telephone: (613) 254-9643  
Facsimile: (613) 254-5867  
Website: www.novatech-eng.com

LOCATION CITY OF OTTAWA 150 DUN SKIPPER DRIVE	PROJECT No. 124107-00
DRAWING NAME LANDSCAPE PLAN	REV # REV # 8
	DRAWING No. 124107-L1

M:\2024\124107\CADD\Landscaping\124107\_L.dwg, L2, Jun 23, 2025 - 4:11 pm, barbare