

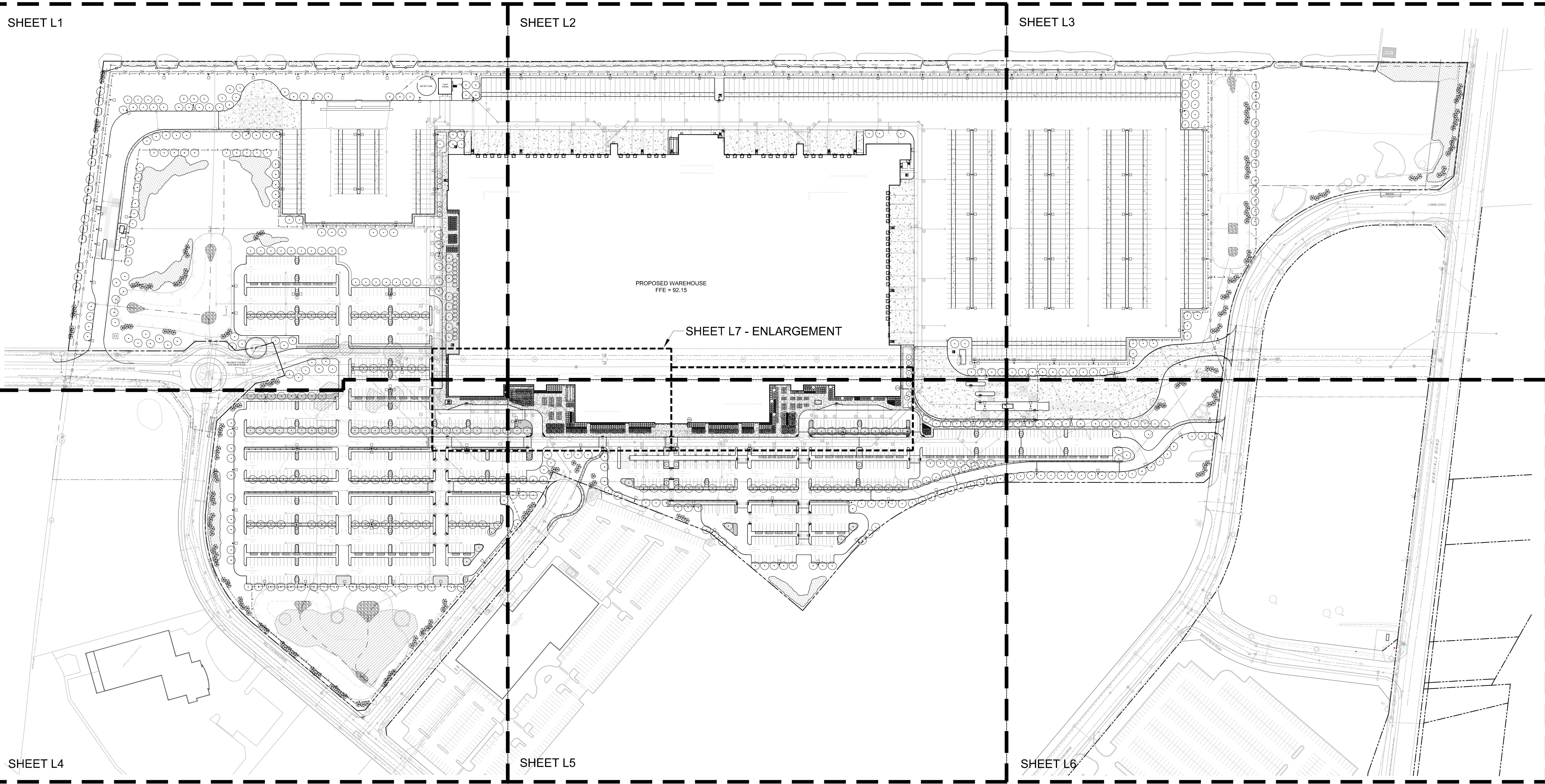
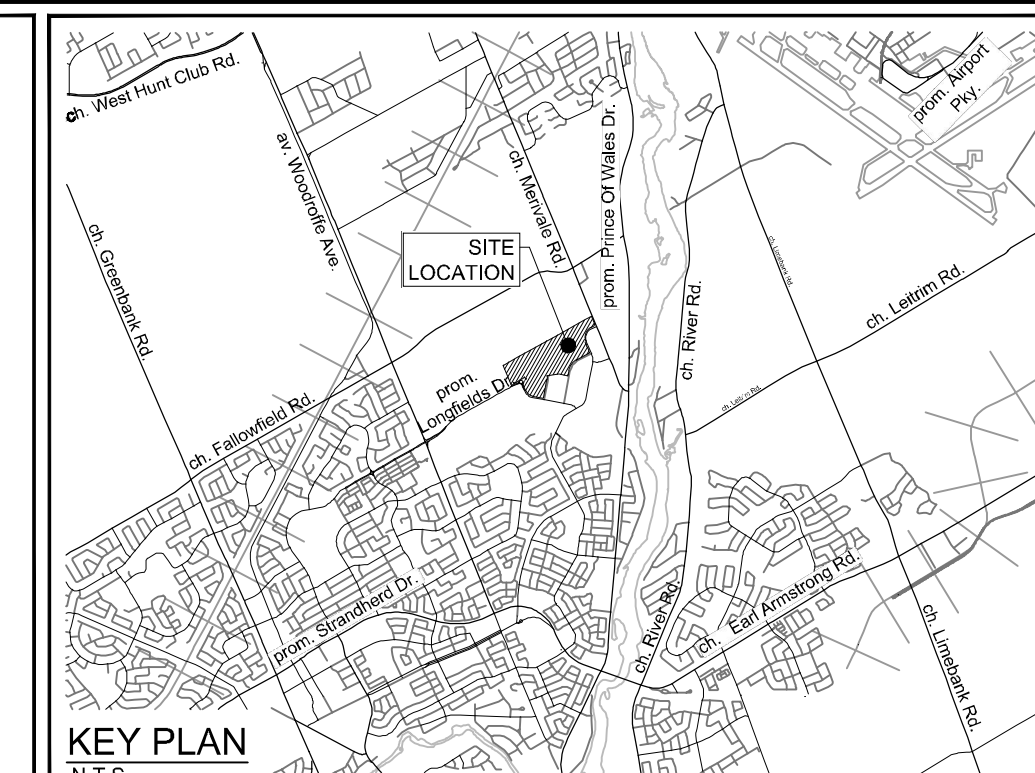
APPROVED
By Lily Xu at 2:53 pm, Jan 23, 2025



LILY XU, MCIP, RPP
MANAGER, DEVELOPMENT REVIEW SOUTH
PLANNING, DEVELOPMENT, AND BUILDING SERVICES
DEPARTMENT, CITY OF OTTAWA

NORTH

KEY PLAN
N.T.S.



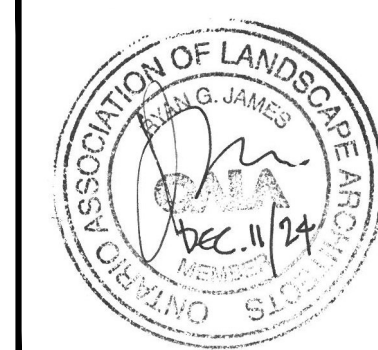
C:\Users\lilyxu\Documents\124123-L0.dwg, L0, Dec 17, 2024, 3:23pm, mtrouin

NOTE:
THE POSITION OF ALL POLE LINES, CONDUITS,
WATERMANS, SEWERS AND OTHER
UNDERGROUND AND OVERGROUND UTILITIES AND
STRUCTURES IS NOT NECESSARILY SHOWN ON
THE CONTRACT DRAWINGS, AND WHERE SHOWN,
THE ACCURACY OF THE POSITION OF SUCH
UTILITIES AND STRUCTURES IS NOT GUARANTEED.
BEFORE STARTING WORK, DETERMINE THE EXACT
LOCATION OF ALL SUCH UTILITIES AND
STRUCTURES AND ASSUME ALL LIABILITY FOR
DAMAGE TO THEM.

**NOT FOR
CONSTRUCTION**

| No. | REVISION | DATE | BY |
|-----|----------------------------------|-----------|-----|
| 3 | REVISED PER CITY COMMENTS | DEC 11/24 | RGJ |
| 2 | ISSUED FOR RFP TENDER SET 60% | NOV 21/24 | RGJ |
| 1 | ISSUED FOR SITE PLAN APPLICATION | OCT 29/24 | RGJ |

| SCALE | DESIGN | FOR REVIEW ONLY |
|-------|---------------|-----------------|
| | DESIGN: MJT | |
| | CHECKED: RGJ | |
| | DRAWN: MJT | |
| | CHECKED: RGJ | |
| | APPROVED: RGJ | |



NOVATECH
Engineers, Planners & Landscape Architects
Suite 200, 240 Michael Cowpland Drive
Ottawa, Ontario, Canada K2M 1P6
Telephone: (613) 254-9643
Facsimile: (613) 254-5867
Website: www.novatech-eng.com

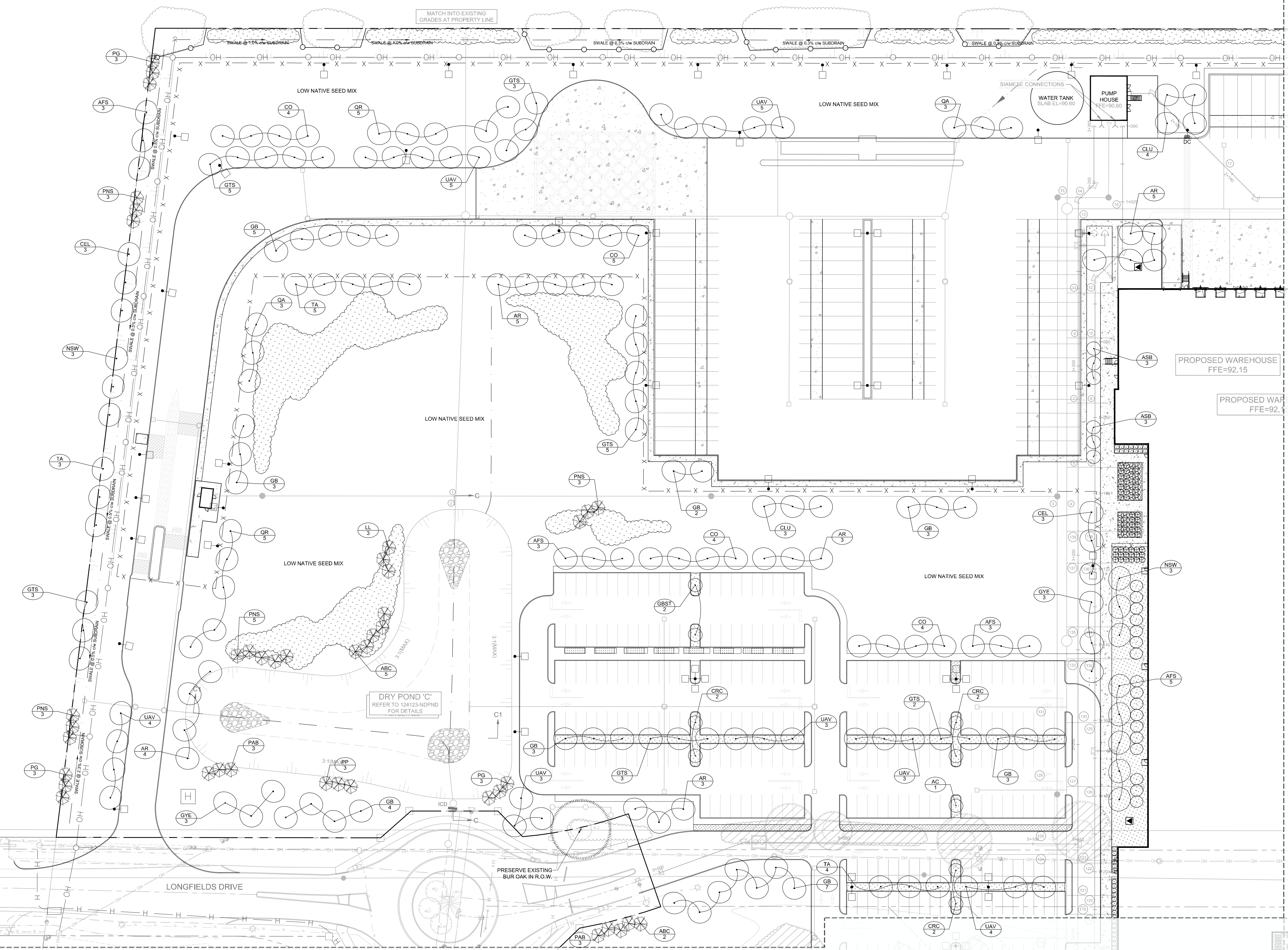
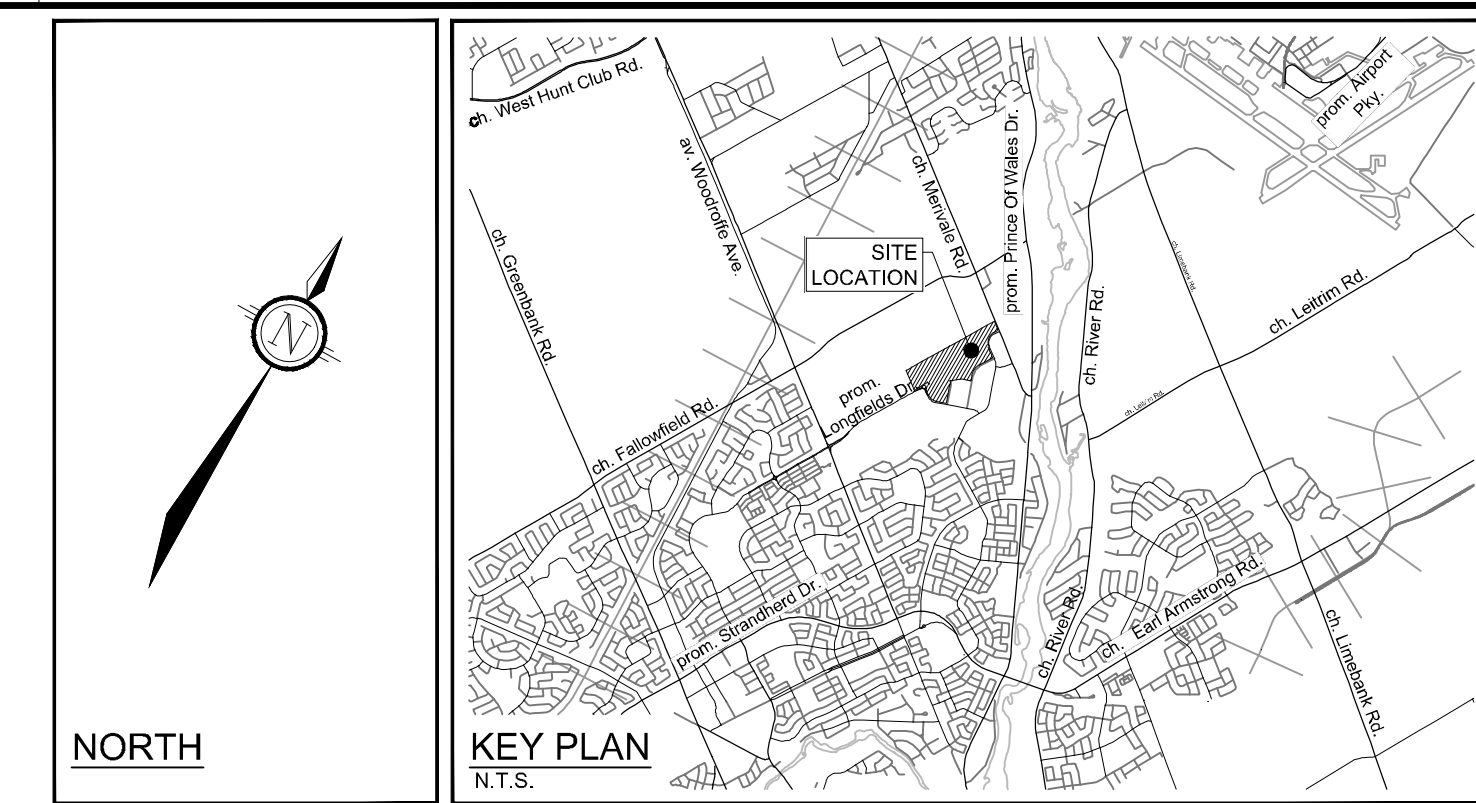
LOCATION
CITY OF OTTAWA
99 BILL LEATHEM, 2 & 20 LEIKEN DRIVE
DRAWING NAME
LANDSCAPE PLAN

| PROJECT No. | REV # | DRAWING No. |
|-------------|---------|-------------|
| 124123 | REV # 3 | 124123-L0 |

D07-12-24-0139 #19192

APPROVED
By Lily Xu at 2:53 pm, Jan 23, 2025

LILY XU, MCIP, RPP
MANAGER, DEVELOPMENT REVIEW SOUTH
PLANNING, DEVELOPMENT, AND BUILDING SERVICES
DEPARTMENT, CITY OF OTTAWA



- LEGEND**
- 3-D1 DETAIL SHEET # NOVATECH OR CITY DETAIL NUMBER SEE LIST FOR CODE
 - PROPERTY LIMIT
 - PROPOSED CONCRETE
 - SHRUBS AND PERENNIALS - TREE COMPANION PLANTING
 - SHRUBS AND PERENNIALS
 - REFORESTATION AREA
 - PROPOSED DECIDUOUS TREE
 - PROPOSED CONIFEROUS TREE
 - EXISTING TREE TO REMAIN
 - EXISTING TREE TO REMOVE
 - PROPOSED SHRUBS
 - SPECIES (SEE PLANT LIST)
 - KEY ## QUANTITY
 - PROPOSED CHAINLINK FENCE (REFER TO ARCHITECTURAL DETAILS)
 - PROPOSED PEDESTRIAN FENCE 1.5M HT

- GENERAL**
1. Read and interpret this drawing in conjunction with all the contract details and specifications, including related civil, utility, structural, architectural, mechanical, electrical, environmental, geotechnical, and survey information.
 2. The Contractor is to determine the exact location, size, material, and elevation of all existing utilities prior to commencing construction. Protect and assume responsibility for all existing utilities regardless of being shown on the drawings.
 3. It is essential to use the plans and details in conjunction with the specifications and notes.
 4. Do not scale drawings. Work to dimensions only.
 5. Protect all existing and retained vegetation for the duration of construction according to the contract details and specifications.
 6. Reinstatement all areas and items damaged or disturbed, beyond the Limit of Work, because of construction activities, including but not limited to construction staging areas, haul roads, stockpile areas, etc. to the satisfaction of the Consultant. Unless otherwise noted, Contractor is to reinstate all areas to pre-construction condition or better to the satisfaction of the Contract Administrator.

- PLANTING**
1. Plant material to be No. 1 Grade and is to comply with Canadian Standards for Nursery Stock (latest edition) published by the Canadian Nursery Landscape Association. Obtain approval from consultant of plant material at source prior to digging. All trees and shrubs to be container grown, potted, W/B or B/B, as indicated on Plant List. Bare root plants are only acceptable for certain species and as approved by the Landscape Architect.
 2. Plant material substitutions are not permitted without the written approval from the Consultant, with 48 hours notice, prior to shipping plant material.
 3. Plant locations are schematic / approximate only. Contractor is to stake out locations on site for approval by the Landscape Architect prior to installation.
 4. The illustrated number of plants shown in the Planting Plan supersedes the estimated number in the Plant List. Contractor to report any discrepancies to the Landscape Architect prior to installation. Contractor will assume full responsibility if the Landscape Architect is not notified.
 5. Ensure trees are thoroughly watered following planting. Monitor material and ensure adequate moisture until acceptance.
 6. In heavy clay or poorly drained soils, set root ball with root collar 75-100mm higher than finished grade.
 7. Approved topsoil depths are as follows:
 - a. Plant Beds - 450mm continuous depth. Applies to shrubs, perennials, vines, and groundcovers.
 - b. Sod Seed Areas - 100mm depth.
 - c. Reforestation - 300mm depth.
 8. Sod to be No. 1 Kentucky Bluegrass Sod grown from minimum mixture of 3 Kentucky Bluegrass cultivars. Quality and source are to comply with Canadian Standards for Nursery Stock, Section 17, (latest edition) published by the Canadian Nursery Landscape Nursery Landscape Association.
 9. Apply the following mineral fertilizer unless soil tests show other requirements:
 - a. Plant Beds - (8-32-16), i.e. 8% Nitrogen, 32% Phosphorus, 16% Potash per manufacturer specifications.
 - b. Sod Areas - (8-32-16), i.e. 8% Nitrogen, 32% Phosphorus, 16% Potash at a rate of 350kg/ha.
 10. Where applicable, for any plant areas with a mix of species/cultivars notes, Contractor is to cluster like plants in groups of 3-5 and evenly distribute these in the noted area.

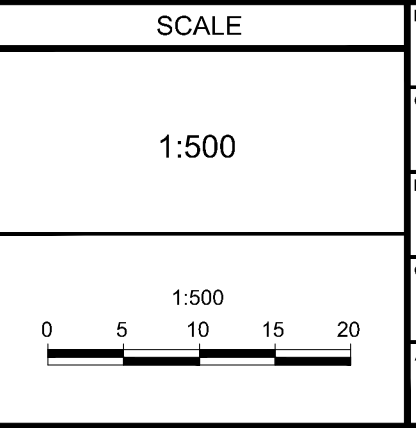
PLANT LIST (PRELIMINARY)

| KEY | QTY | BOTANICAL NAME | COMMON NAME | SIZE | COND | SPACING |
|-------------------------|-----|--|-------------------------------|----------|------|----------|
| Coniferous Trees | | | | | | |
| ABC | 5 | Abies concolor | White Fir | 200cm Ht | WB | As Shown |
| LL | 3 | Larix laricina | Tamarack | 200cm Ht | WB | As Shown |
| PAB | 6 | Picea abies | Norway Spruce | 200cm Ht | WB | As Shown |
| PG | 11 | Picea glauca | White Spruce | 200cm Ht | WB | As Shown |
| PP | 5 | Picea pungens | Colorado Spruce | 200cm Ht | WB | As Shown |
| PNS | 12 | Pinus strobus | Eastern White Pine | 200cm Ht | WB | As Shown |
| Deciduous Trees | | | | | | |
| AR | 13 | Acer rubrum | Red Maple | 50mm Cal | WB | As Shown |
| ASB | 6 | Acer saccharum 'Barnett Cole' | Asiatic Sugar Maple | 50mm Cal | WB | As Shown |
| AFS | 8 | Acer x freemanii 'Sonne' | Sierra Glen Maple | 50mm Cal | WB | As Shown |
| CO | 5 | Carya ovata | Shagbark Hickory | 50mm Cal | WB | As Shown |
| CEL | 6 | Celtis occidentalis | Hickberry | 50mm Cal | WB | As Shown |
| CLU | 7 | Cladrastis kentuckea (formerly 'lutea') | Yellowwood | 50mm Cal | WB | As Shown |
| CRC | 6 | Crataegus crus-galli 'Inermis' | Thornless Cockspur Hawthorn | 50mm Cal | WB | As Shown |
| GB | 12 | Ginkgo biloba | Ginkgo (Male) | 50mm Cal | WB | As Shown |
| GTS | 8 | Gleditsia triacanthos var. 'Inermis' 'Shademaster' | Shademaster Honeylocust | 50mm Cal | WB | As Shown |
| GYE | 8 | Gymnocladus dioica 'Espresso-JFS' | Espresso Kentucky Coffee Tree | 50mm Cal | WB | As Shown |
| NSW | 6 | Nyssa sylvatica 'Wildfire' | Wildfire Black Gum | 50mm Cal | WB | As Shown |
| QR | 10 | Quercus rubra | Red Oak | 50mm Cal | WB | As Shown |
| TA | 8 | Tilia americana | Basswood | 50mm Cal | WB | As Shown |
| UAV | 7 | Ulmus americana 'Valley Forge' | Valley Forge Elm | 50mm Cal | WB | As Shown |

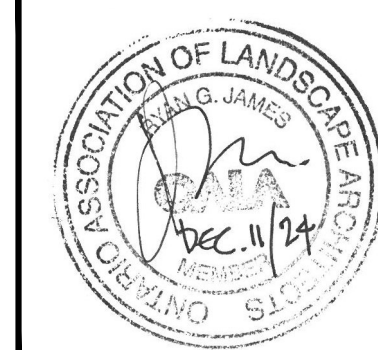
NOTE: THE POSITION OF ALL POLE LINES, CONDUITS, WATERMANS, SEWERS AND OTHER UNDERGROUND AND OVERGROUND UTILITIES AND STRUCTURES IS NOT NECESSARILY SHOWN ON THE CONTRACT DRAWINGS, AND WHERE SHOWN, THE ACCURACY OF THE POSITION OF SUCH UTILITIES AND STRUCTURES IS NOT GUARANTEED. BEFORE STARTING WORK, DETERMINE THE EXACT LOCATION OF ALL SUCH UTILITIES AND STRUCTURES AND ASSUME ALL LIABILITY FOR DAMAGE TO THEM.

NOT FOR CONSTRUCTION

| No. | REVISION | DATE | BY |
|-----|----------------------------------|-----------|-----|
| 3 | REVISED PER CITY COMMENTS | DEC 11/24 | RGJ |
| 2 | ISSUED FOR RFP TENDER SET 60% | NOV 21/24 | RGJ |
| 1 | ISSUED FOR SITE PLAN APPLICATION | OCT 29/24 | RGJ |



| FOR REVIEW ONLY | DESIGN | CHECKED | DRAWN | APPROVED |
|-----------------|--------|---------|-------|----------|
| | MJT | RGJ | MJT | RGJ |

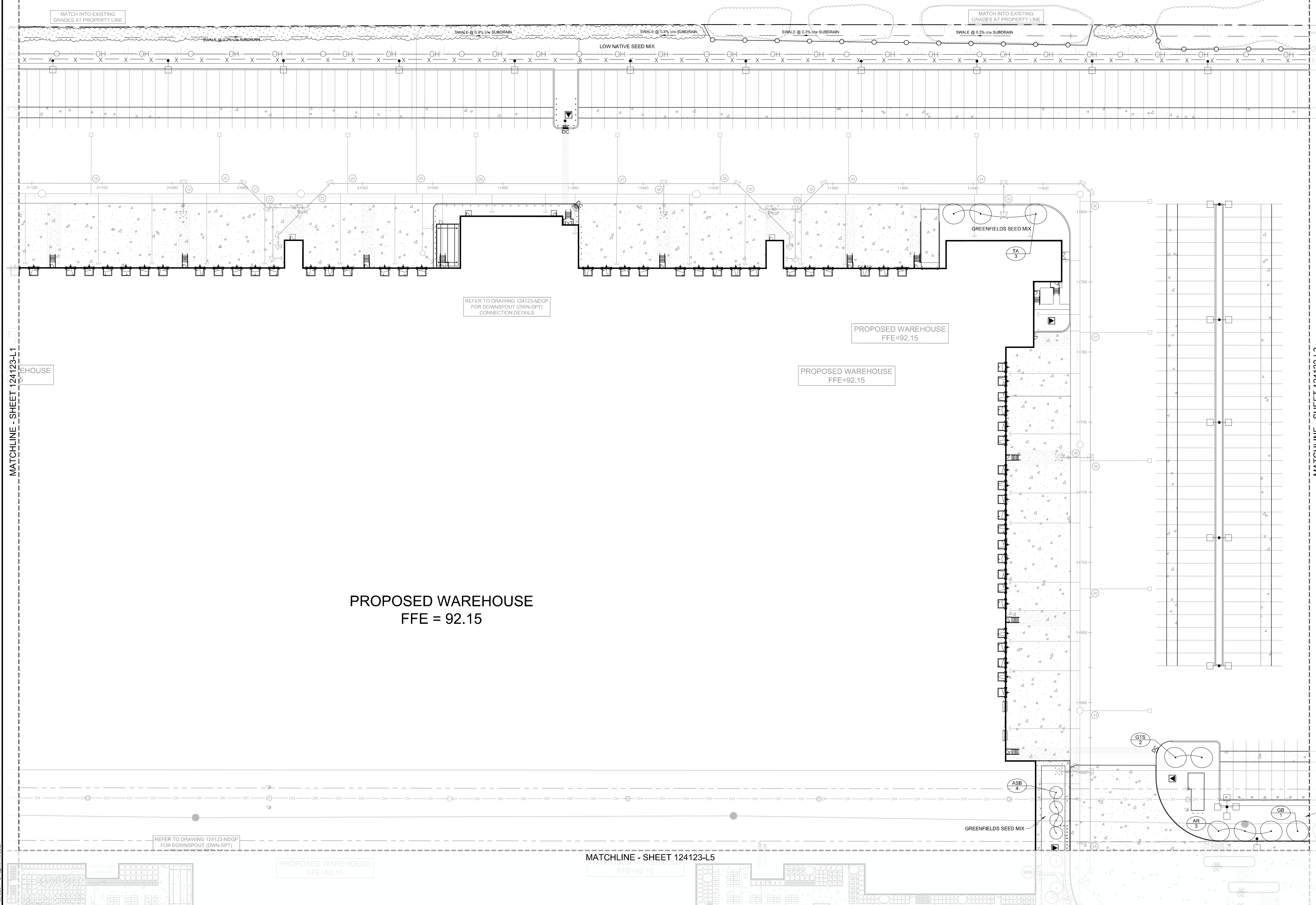
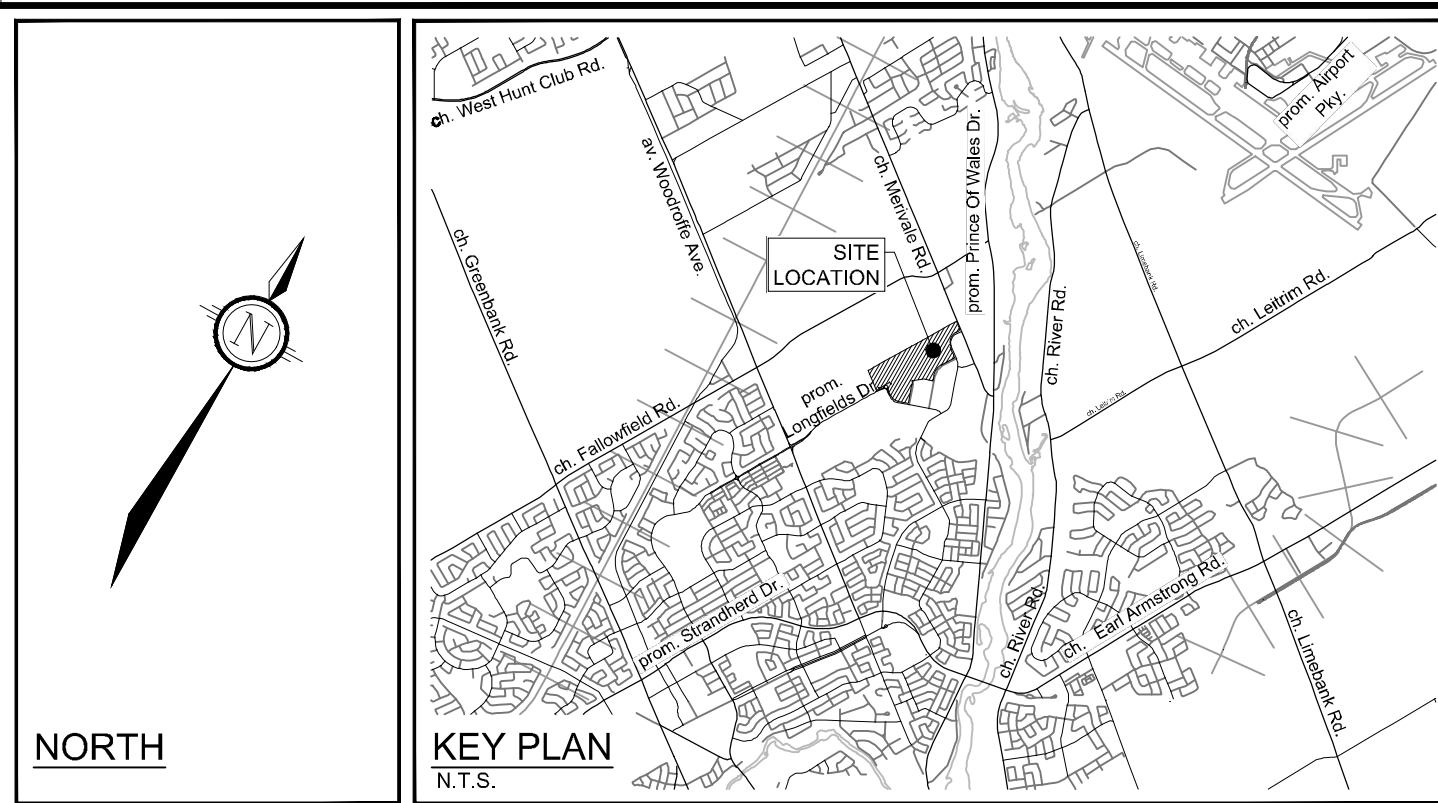


NOVATECH
Engineers, Planners & Landscape Architects
Suite 200, 240 Michael Cowpland Drive
Ottawa, Ontario, Canada K2M 1P6
Telephone: (613) 254-9643
Facsimile: (613) 254-5867
Website: www.novatech-eng.com

| | |
|--|--------------------------|
| LOCATION CITY OF OTTAWA 99 BILL LEATHAM, 2 & 20 LEIKEN DRIVE | PROJECT NO. 124123 |
| DRAWING NAME LANDSCAPE PLAN | REV # 3 |
| | DRAWING NO. 124123-L1 |

APPROVED
By Lily Xu at 2:53 pm, Jan 23, 2025

LILY XU, MCIP, RPP
MANAGER, DEVELOPMENT REVIEW SOUTH
PLANNING, DEVELOPMENT, AND BUILDING SERVICES
DEPARTMENT, CITY OF OTTAWA



- LEGEND**
- 3-D1 DETAIL SHEET # NOVATECH OR CITY DETAIL NUMBER SEE LIST FOR CODE
 - PROPERTY LIMIT
 - PROPOSED CONCRETE
 - SHRUBS AND PERENNIALS - TREE COMPANION PLANTING
 - SHRUBS AND PERENNIALS
 - REFORESTATION AREA
 - PROPOSED DECIDUOUS TREE
 - PROPOSED CONIFEROUS TREE
 - EXISTING TREE TO REMAIN
 - EXISTING TREE TO REMOVE
 - PROPOSED SHRUBS (SEE PLANT LIST)
 - KEY ## QUANTITY
 - PROPOSED CHAINLINK FENCE (REFER TO ARCHITECTURAL DETAILS)
 - PROPOSED PEDESTRIAN FENCE 1.5m HT

- GENERAL**
- Read and interpret this drawing set in conjunction with all the contract details and specifications, including related civil, utility, structural, architectural, mechanical, electrical, environmental, geotechnical, and survey information.
 - The Contractor is to determine the exact location, size, material, and elevation of all existing utilities prior to commencing construction. Protect and assume responsibility for all existing utilities regardless of being shown on the drawings.
 - It is essential to use the plans and details in conjunction with the specifications and notes.
 - Do not scale drawings. Work to dimensions only.
 - Protect all existing and retained vegetation for the duration of construction according to the contract details and specifications.
 - Reinstate all areas and items damaged or disturbed, beyond the Limit of Work, because of construction activities, including but not limited to construction staging areas, haul roads, stockpile areas, etc. to the satisfaction of the Consultant. Unless otherwise noted, Contractor is to reinstate all areas to pre-construction condition or better to the satisfaction of the Contract Administrator.
- PLANTING**
- Plant material to be No. 1 Grade and is to comply with Canadian Standards for Nursery Stock (latest edition) published by the Canadian Nursery Landscape Association. Use structurally sound plant material with strong fibrous root system free of diseases, defects, and injuries. Use trees with straight trunks, well and characteristically branched for species. Obtain approval from consultant of plant material at source prior to digging. All trees and shrubs to be container grown, potted, W/B or B/B, as indicated on Plant List. Bare root plants are only acceptable for certain species and as approved by the Landscape Architect.
 - Plant material substitutions are not permitted without the written approval from the Consultant, with 48 hours notice, prior to shipping plant material.
 - Plant locations are schematic / approximate only. Contractor is to stake out locations on site for approval by the Landscape Architect prior to installation.
 - The illustrated number of plants shown in the Planting Plan supersedes the estimated number in the Plant List. Contractor to report any discrepancies to the Landscape Architect prior to installation. Contractor will assume full responsibility if the Landscape Architect is not notified.
 - Ensure trees are thoroughly watered following planting. Monitor material and ensure adequate moisture until acceptance.
 - In heavy clay or poorly drained soils, set root ball with root collar 75-100mm higher than finished grade.
 - Approved topsoil depths are as follows:
 - Plant Beds - 450mm continuous depth. Applies to shrubs, perennials, vines, and groundcovers.
 - Sod / Seed Areas - 100mm depth.
 - Reforestation - 300mm depth.
 - Sod to be No. 1 Kentucky Bluegrass Sod grown from minimum mixture of 3 Kentucky Bluegrass cultivars. Quality and source are to comply with Canadian Standards for Nursery Stock, Section 17, (latest edition) published by the Canadian Nursery Landscape Nursery Landscape Association.
 - Plant Beds - (8-32-16), i.e. 8% Nitrogen, 32% Phosphorus, 16% Potash per manufacturer specifications.
 - Sod Areas - (8-32-16), i.e. 8% Nitrogen, 32% Phosphorus, 16% Potash at a rate of 350kg/ha.
 - Where applicable, for any plant areas with a mix of species/cultivars notes, Contractor is to cluster like plants in groups of 3-5 and evenly distribute these in the noted area.

NOTE:
SEED MIXES AND NOTES CAN BE FOUND ON THE NOTES AND DETAILS SHEET OF THE LANDSCAPE DRAWING PACKAGE.

PLANT LIST (PRELIMINARY)

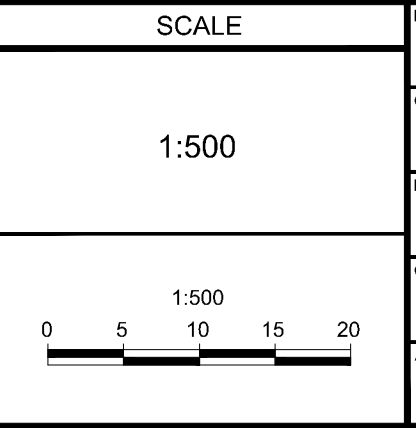
| KEY | QTY | BOTANICAL NAME | COMMON NAME | SIZE | COND | SPACING |
|------------------------|-----|--|-------------------------|----------|------|----------|
| Deciduous Trees | | | | | | |
| AR | 3 | <i>Acer rubrum</i> | Red Maple | 50mm Cal | WB | As Shown |
| CGZ | 4 | <i>Crataegus crus-galli</i> 'Crusam' | Crusader Hawthorn | 50mm Cal | WB | As Shown |
| GB | 1 | <i>Ginkgo biloba</i> | Ginkgo (Maie) | 50mm Cal | WB | As Shown |
| GTS | 2 | <i>Gleditsia triacanthos</i> var. <i>inermis</i> 'Shademaster' | Shademaster Honeylocust | 50mm Cal | WB | As Shown |
| TA | 3 | <i>Tilia americana</i> | Basswood | 50mm Cal | WB | As Shown |

PROPOSED WAREHOUSE
FFE = 92.15

NOT FOR CONSTRUCTION

NOTE:
THE POSITION OF ALL POLE LINES, CONDUITS, WATERMANS, SEWERS AND OTHER UNDERGROUND AND OVERGROUND UTILITIES AND STRUCTURES IS NOT NECESSARILY SHOWN ON THE CONTRACT DRAWINGS, AND WHERE SHOWN, THE ACCURACY OF THE POSITION OF SUCH UTILITIES AND STRUCTURES IS NOT GUARANTEED. BEFORE STARTING WORK, DETERMINE THE EXACT LOCATION OF ALL SUCH UTILITIES AND STRUCTURES AND ASSUME ALL LIABILITY FOR DAMAGE TO THEM.

| No. | REVISION | DATE | BY |
|-----|----------------------------------|-----------|-----|
| 3 | REVISED PER CITY COMMENTS | DEC 11/24 | RGJ |
| 2 | ISSUED FOR RFP TENDER SET 60% | NOV 21/24 | RGJ |
| 1 | ISSUED FOR SITE PLAN APPLICATION | OCT 29/24 | RGJ |



| SCALE | FOR REVIEW ONLY |
|-------|---|
| 1:500 | MJT (CHECKED), RGJ (DRAWN), MJT (CHECKED), RGJ (APPROVED) |

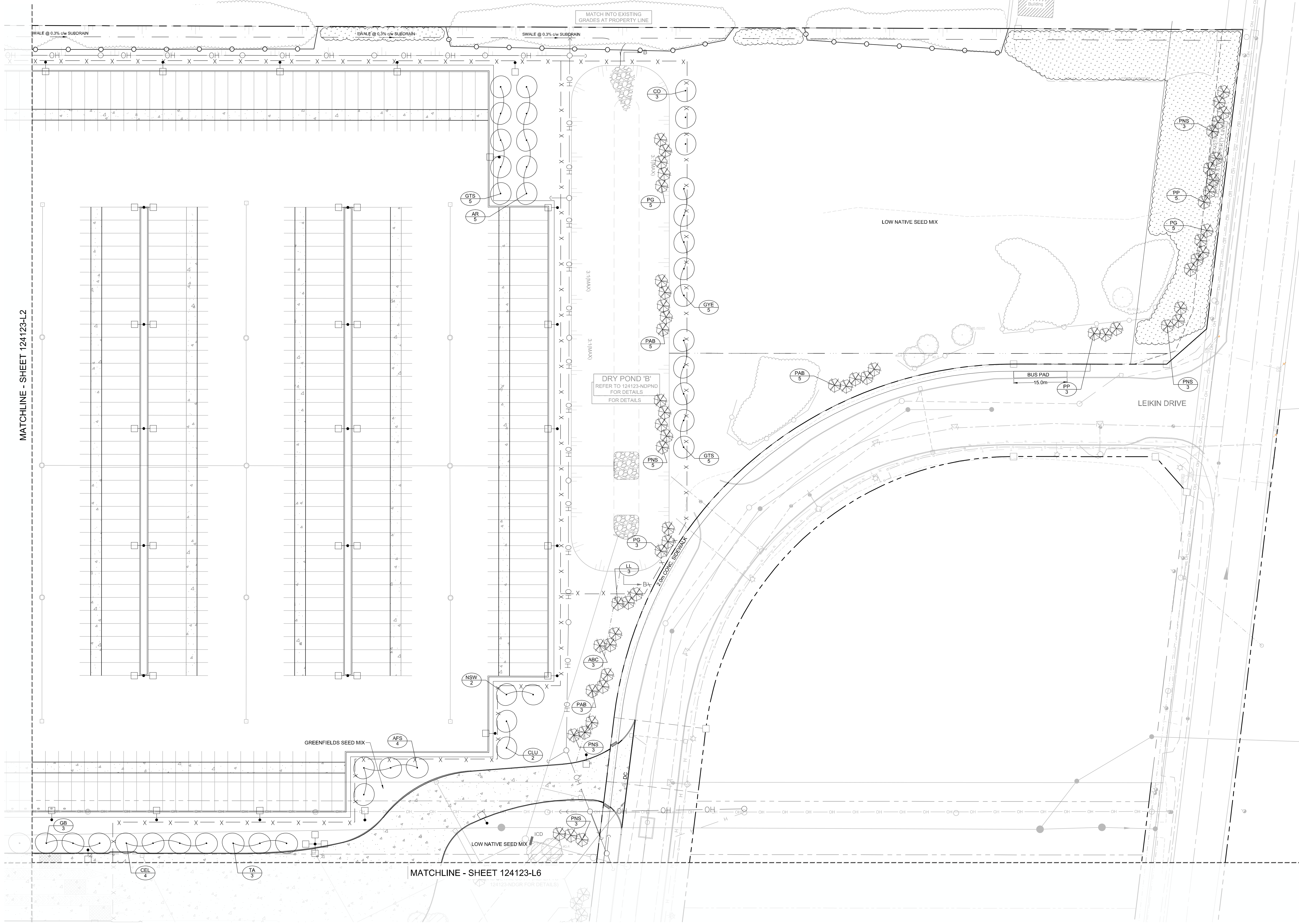
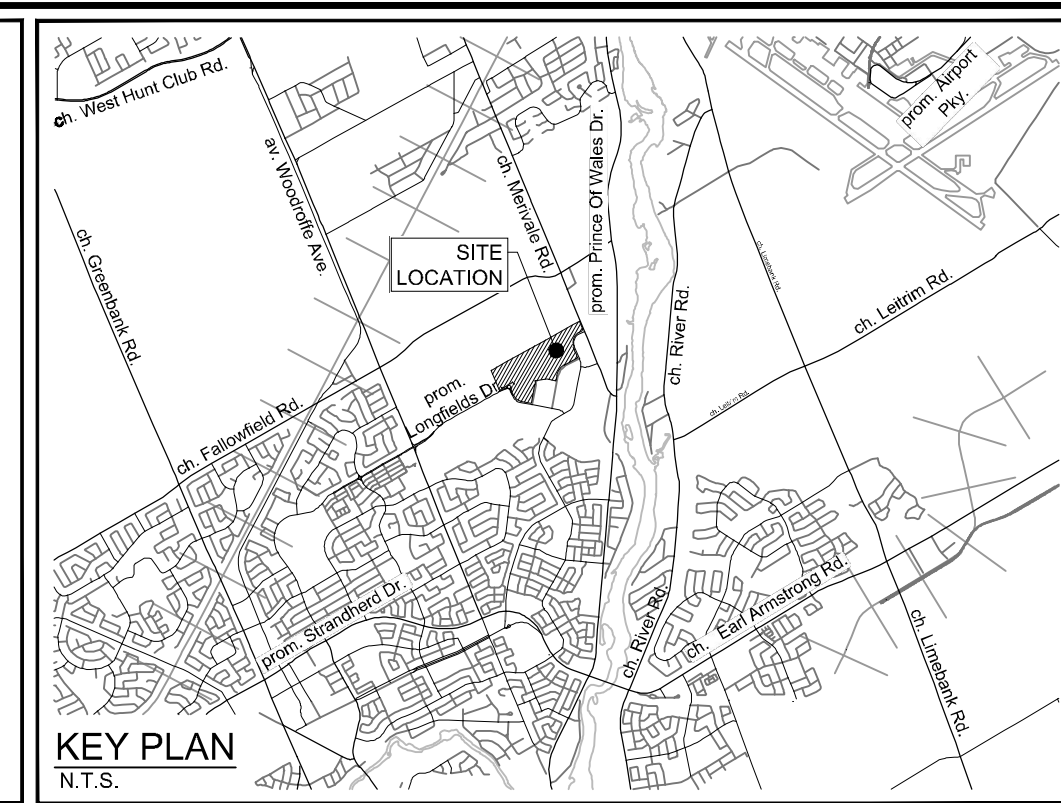


NOVATECH
Engineers, Planners & Landscape Architects
Suite 200, 240 Michael Copeland Drive
Ottawa, Ontario, Canada K2M 1P6
Telephone: (613) 254-9643
Facsimile: (613) 254-5867
Website: www.novatech-eng.com

| | |
|--|--------------------------|
| LOCATION CITY OF OTTAWA 99 BILL LEATHAM, 2 & 20 LEIKEN DRIVE | PROJECT NO. 124123 |
| DRAWING NAME LANDSCAPE PLAN | REV #2 |
| | DRAWING NO. 124123-L2 |

APPROVED
By Lily Xu at 2:53 pm, Jan 23, 2025

Lily Xu
LILY XU, MCIP, RPP
MANAGER, DEVELOPMENT REVIEW SOUTH
PLANNING, DEVELOPMENT, AND BUILDING SERVICES
DEPARTMENT, CITY OF OTTAWA



LEGEND

- 3-D1 DETAIL SHEET # NOVATECH OR CITY DETAIL NUMBER SEE LIST FOR CODE
- PROPERTY LIMIT
- PROPOSED CONCRETE
- SHRUBS AND PERENNIALS - TREE COMPANION PLANTING
- SHRUBS AND PERENNIALS
- REFORESTATION AREA
- PROPOSED DECIDUOUS TREE
- PROPOSED CONIFEROUS TREE
- EXISTING TREE TO REMAIN
- EXISTING TREE TO REMOVE
- PROPOSED SHRUBS
- SPECIES (SEE PLANT LIST)
- QUANTITY
- PROPOSED CHAINLINK FENCE (REFER TO ARCHITECTURAL DETAILS)
- PROPOSED PEDESTRIAN FENCE 1.5m HT

GENERAL

1. Read and interpret this drawing/ drawing set in conjunction with all the contract details and specifications, including related civil, utility, structural, architectural, mechanical, electrical, environmental, geotechnical, and survey information.
2. The Contractor is to determine the exact location, size, material, and elevation of all existing utilities prior to commencing construction. Protect and assume responsibility for all existing utilities regardless of being shown on the drawings.
3. It is essential to use the plans and details in conjunction with the specifications and notes.
4. Do not scale drawings. Work to dimensions only.
5. Protect all existing and retained vegetation for the duration of construction according to the contract details and specifications.
6. Reinstatement all areas and items damaged or disturbed, beyond the Limit of Work, because of construction activities, including but not limited to construction staging areas, haul roads, stockpile areas, etc. to the satisfaction of the Consultant. Unless otherwise noted, Contractor is to reinstate all areas to pre-construction condition or better to the satisfaction of the Contract Administrator.

PLANTING

1. Plant material to be No. 1 Grade and is to comply with Canadian Standards for Nursery Stock (latest edition) published by the Canadian Nursery Landscape Association. Use structurally sound plant material with strong fibrous root system free of diseases, defects, and injuries. Use trees with straight trunks, well and characteristically branched for species. Obtain approval from consultant of plant material at source prior to digging. All trees and shrubs to be container grown, potted, W/B or B/B, as indicated on Plant List. Bare root plants are only acceptable for certain species and as approved by the Landscape Architect.
2. Plant material substitutions are not permitted without the written approval from the Consultant, with 48 hours notice, prior to shipping plant material.
3. Plant locations are schematic/ approximate only. Contractor is to stake out locations on site for approval by the Landscape Architect prior to installation.
4. The illustrated number of plants shown in the Planting Plan supersedes the estimated number in the Plant List. Contractor to report any discrepancies to the Landscape Architect prior to installation. Contractor will assume full responsibility if the Landscape Architect is not notified.
5. Ensure trees are thoroughly watered following planting. Monitor material and ensure adequate moisture until acceptance.
6. In heavy clay or poorly drained soils, set root ball with root collar 75-100mm higher than finished grade.
7. Approved topsoil depths are as follows:
 - a. Plant Beds - 450mm continuous depth. Applies to shrubs, perennials, vines, and groundcovers.
 - b. Sod Seed Areas - 100mm depth.
 - c. Reforestation - 300mm depth.
8. Sod to be No. 1 Kentucky Bluegrass Sod grown from minimum mixture of 3 Kentucky Bluegrass cultivars. Quality and source are to comply with Canadian Standards for Nursery Stock, Section 17, (latest edition) published by the Canadian Nursery Landscape Nursery Landscape Association.
 - a. Plant Beds - (8-32-16), i.e. 8% Nitrogen, 32% Phosphorus, 16% Potash per manufacturer specifications.
 - b. Sod Areas - (8-32-16), i.e. 8% Nitrogen, 32% Phosphorus, 16% Potash at a rate of 350kg/ha.
9. Where applicable, for any plant areas with a mix of species/ cultivars notes, Contractor is to cluster like plants in groups of 3-5 and evenly distribute these in the noted area.

NOTE:

SEED MIXES AND NOTES CAN BE FOUND ON THE NOTES AND DETAILS SHEET OF THE LANDSCAPE DRAWING PACKAGE.

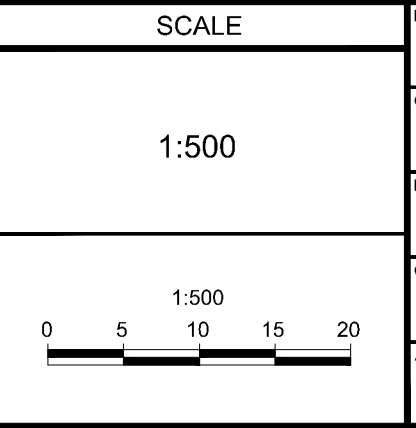
PLANT LIST (PRELIMINARY)

| KEY | QTY | BOTANICAL NAME | COMMON NAME | SIZE | COND | SPACING |
|-------------------------|-----|---|-------------------------------|----------|------|----------|
| Coniferous Trees | | | | | | |
| ABC | 6 | <i>Abies concolor</i> | White Fir | 200cm Ht | WB | As Shown |
| LL | 6 | <i>Larix laricina</i> | Tamarack | 200cm Ht | WB | As Shown |
| PAB | 18 | <i>Picea abies</i> | Norway Spruce | 200cm Ht | WB | As Shown |
| PG | 18 | <i>Picea glauca</i> | White Spruce | 200cm Ht | WB | As Shown |
| PP | 11 | <i>Picea pungens</i> | Colorado Spruce | 200cm Ht | WB | As Shown |
| PNS | 19 | <i>Pinus strobus</i> | Eastern White Pine | 200cm Ht | WB | As Shown |
| Deciduous Trees | | | | | | |
| AR | 5 | <i>Acer rubrum</i> | Red Maple | 50mm Cal | WB | As Shown |
| AFS | 4 | <i>Acer x freemanii 'Senna'</i> | Senna Glen Maple | 50mm Cal | WB | As Shown |
| CO | 3 | <i>Carya ovata</i> | Shagbark Hickory | 50mm Cal | WB | As Shown |
| CEL | 4 | <i>Celtis occidentalis</i> | Hickberry | 50mm Cal | WB | As Shown |
| CLU | 2 | <i>Cladrasia kentikea (formerly 'lutea')</i> | Yellowwood | 50mm Cal | WB | As Shown |
| GB | 3 | <i>Ginkgo biloba</i> | Ginkgo (Mile) | 50mm Cal | WB | As Shown |
| GTS | 5 | <i>Gleditsia triacanthos var. inermis 'Shademaster'</i> | Shademaster Honeylocust | 50mm Cal | WB | As Shown |
| GYE | 5 | <i>Gymnocladus dioica 'Espresso-JFS'</i> | Espresso Kentucky Coffee Tree | 50mm Cal | WB | As Shown |
| NSW | 3 | <i>Nyssa sylvatica 'Wildfire'</i> | Wildfire Black Gum | 50mm Cal | WB | As Shown |
| TA | 3 | <i>Tilia americana</i> | Basswood | 50mm Cal | WB | As Shown |

NOTE: THE POSITION OF ALL POLE LINES, CONDUITS, WATERMANS, SEWERS AND OTHER UNDERGROUND AND OVERGROUND UTILITIES AND STRUCTURES IS NOT NECESSARILY SHOWN ON THE CONTRACT DRAWINGS, AND WHERE SHOWN, THE ACCURACY OF THE POSITION OF SUCH UTILITIES AND STRUCTURES IS NOT GUARANTEED. BEFORE STARTING WORK, DETERMINE THE EXACT LOCATION OF ALL SUCH UTILITIES AND STRUCTURES AND ASSUME ALL LIABILITY FOR DAMAGE TO THEM.

NOT FOR CONSTRUCTION

| No. | REVISION | DATE | BY |
|-----|----------------------------------|-----------|-----|
| 3 | REVISED PER CITY COMMENTS | DEC 11/24 | RGJ |
| 2 | ISSUED FOR RFP TENDER SET 60% | NOV 21/24 | RGJ |
| 1 | ISSUED FOR SITE PLAN APPLICATION | OCT 29/24 | RGJ |



FOR REVIEW ONLY

NOVATECH
Engineers, Planners & Landscape Architects
Suite 200, 240 Michael Cowpland Drive
Ottawa, Ontario, Canada K2M 1P6
Telephone: (613) 254-9643
Facsimile: (613) 254-5867
Website: www.novatech-eng.com

LOCATION
CITY OF OTTAWA
99 BILL LEATHAM, 2 & 20 LEIKEN DRIVE

DRAWING NAME
LANDSCAPE PLAN

PROJECT NO.: 124123
REV # 3
DRAWING NO.: 124123-L3

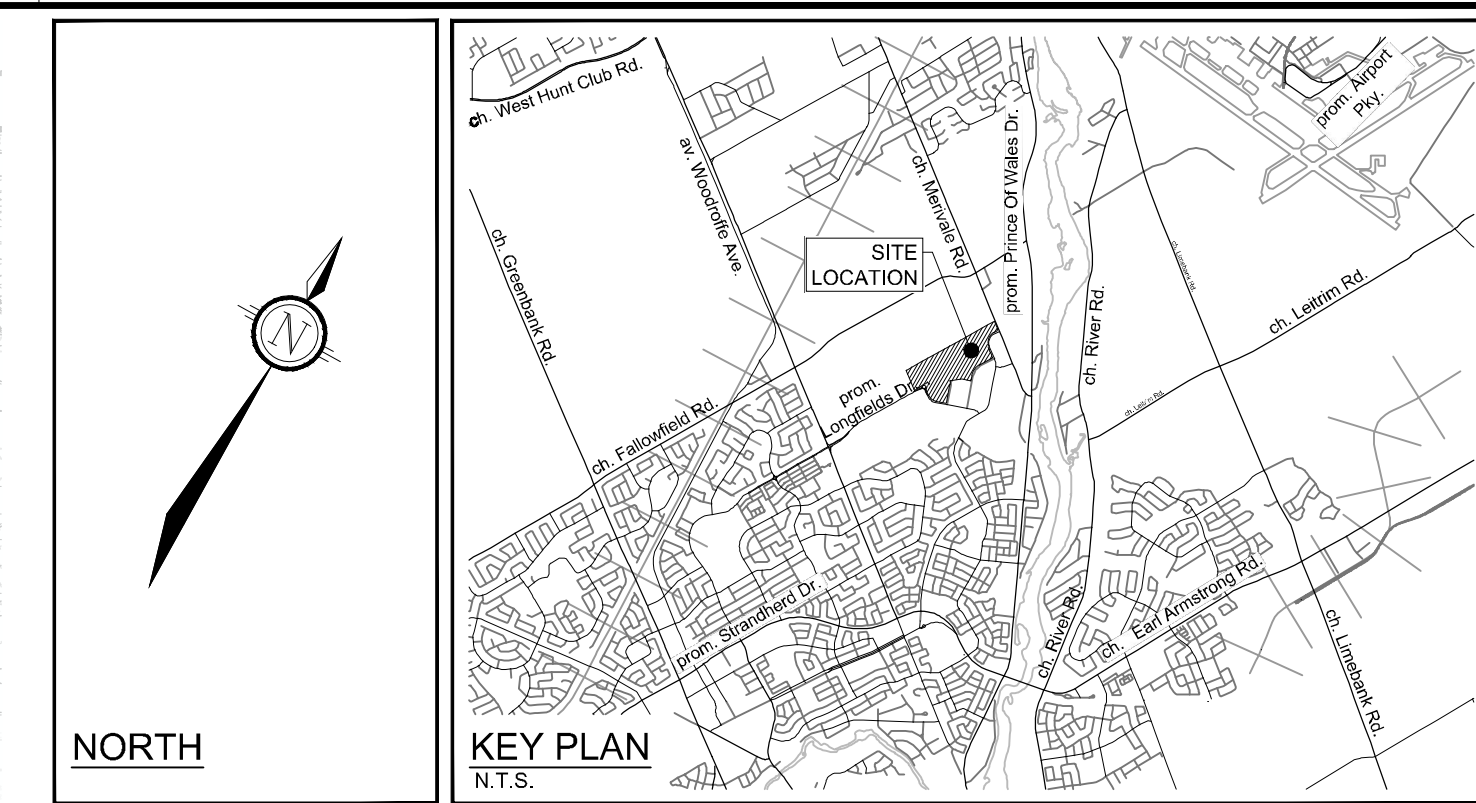
C:\Users\lilyxu\Documents\124123-L3.dwg, L3, Dec 17, 2024, 2:53pm, mmmmm

D07-12-24-0139

APPROVED
By Lily Xu at 2:53 pm, Jan 23, 2025

LILY XU, MCIP, RPP
MANAGER, DEVELOPMENT REVIEW SOUTH
PLANNING, DEVELOPMENT, AND BUILDING SERVICES
DEPARTMENT, CITY OF OTTAWA

MATCHLINE - SHEET 124123-L1



LEGEND

- 3-D1 DETAIL SHEET # NOVATECH OR CITY - DETAIL NUMBER SEE LIST FOR CODE
- PROPERTY LIMIT
- PROPOSED CONCRETE
- SHRUBS AND PERENNIALS - TREE COMPANION PLANTING
- SHRUBS AND PERENNIALS
- REFORESTATION AREA
- PROPOSED DECIDUOUS TREE
- PROPOSED CONIFEROUS TREE
- EXISTING TREE TO REMAIN
- EXISTING TREE TO REMOVE
- PROPOSED SHRUBS
- SPECIES (SEE PLANT LIST)
- QUANTITY
- PROPOSED CHAINLINK FENCE (REFER TO ARCHITECTURAL DETAILS)
- PROPOSED PEDESTRIAN FENCE 1.5m HT

GENERAL

1. Read and interpret this drawing set in conjunction with all the contract details and specifications, including related civil, utility, structural, architectural, mechanical, electrical, environmental, geotechnical, and survey information.
2. The Contractor is to determine the exact location, size, material, and elevation of all existing utilities prior to commencing construction. Protect and assume responsibility for all existing utilities regardless of being shown on the drawings.
3. It is essential to use the plans and details in conjunction with the specifications and notes.
4. Do not scale drawings. Work to dimensions only.
5. Protect all existing and retained vegetation for the duration of construction according to the contract details and specifications.
6. Reinstatement all areas and items damaged or disturbed, beyond the Limit of Work, because of construction activities, including but not limited to construction staging areas, haul roads, stockpile areas, etc. to the satisfaction of the Consultant. Unless otherwise noted, Contractor is to reinstate all areas to pre-construction condition or better to the satisfaction of the Contract Administrator.

PLANTING

1. Plant material to be No. 1 Grade and is to comply with Canadian Standards for Nursery Stock (latest edition) published by the Canadian Nursery Landscape Association. Use structurally sound plant material with strong fibrous root system free of diseases, defects, and injuries. Use trees with straight trunks, well and characteristically branched for species. Obtain approval from consultant of plant material at source prior to digging. All trees and shrubs to be container grown, potted, W/B or B/B, as indicated on Plant List. Bare root plants are only acceptable for certain species and as approved by the Landscape Architect.
2. Plant material substitutions are not permitted without the written approval from the Consultant, with 48 hours notice, prior to shipping plant material.
3. Plant locations are schematic / approximate only. Contractor is to stake out locations on site for approval by the Landscape Architect prior to installation.
4. The illustrated number of plants shown in the Planting Plan supersedes the estimated number in the Plant List. Contractor to report any discrepancies to the Landscape Architect prior to installation. Contractor will assume full responsibility if the Landscape Architect is not notified.
5. Ensure trees are thoroughly watered following planting. Monitor material and ensure adequate moisture until acceptance.
6. In heavy clay or poorly drained soils, set root ball with root collar 75-100mm higher than finished grade.
7. Approved topsoil depths are as follows:
 - a. Plant Beds - 450mm continuous depth. Applies to shrubs, perennials, vines, and groundcovers.
 - b. Sod Seed Areas - 100mm depth.
 - c. Reforestation - 300mm depth.
8. Sod to be No. 1 Kentucky Bluegrass Sod grown from minimum mixture of 3 Kentucky Bluegrass cultivars. Quality and source are to comply with Canadian Standards for Nursery Stock, Section 17, (latest edition) published by the Canadian Nursery Landscape Nursery Landscape Association.
 - a. Plant Beds - (8-32-16), i.e. 8% Nitrogen, 32% Phosphorus, 16% Potash per manufacturer specifications.
 - b. Sod Areas - (8-32-16), i.e. 8% Nitrogen, 32% Phosphorus, 16% Potash at a rate of 350kg/ha.
9. Where applicable, for any plant areas with a mix of species/cultivars notes, Contractor is to cluster like plants in groups of 3-5 and evenly distribute these in the noted area.

PLANT LIST (PRELIMINARY)

| KEY | QTY | BOTANICAL NAME | COMMON NAME | SIZE | COND | SPACING |
|-------------------------|-----|--|-------------------------------|-----------|------|----------|
| Coniferous Trees | | | | | | |
| ABC | 6 | <i>Abies concolor</i> | White Fir | 200cm HT | WB | As Shown |
| LL | 9 | <i>Larix laricina</i> | Tamarack | 200cm HT | WB | As Shown |
| PAB | 13 | <i>Picea abies</i> | Norway Spruce | 200cm HT | WB | As Shown |
| PG | 13 | <i>Picea glauca</i> | White Spruce | 200cm HT | WB | As Shown |
| PP | 13 | <i>Picea pungens</i> | Colorado Spruce | 200cm HT | WB | As Shown |
| PNS | 11 | <i>Pinus strobus</i> | Eastern White Pine | 200cm HT | WB | As Shown |
| Deciduous Trees | | | | | | |
| AR | 8 | <i>Acer rubrum</i> | Red Maple | 50mm Cal | WB | As Shown |
| ASB | 6 | <i>Acer saccharum</i> 'Barnett Cole' | Aspen Sugar Maple | 50mm Cal | WB | As Shown |
| AFS | 6 | <i>Acer x freemanii</i> 'Spartan' | Sierra Glen Maple | 50mm Cal | WB | As Shown |
| AC | 3 | <i>Ametanochier canadensis</i> (Single stem) | Shadblow Serviceberry | 45mm Cal | WB | As Shown |
| CEL | 10 | <i>Celtis occidentalis</i> | Hackberry | 50mm Cal | WB | As Shown |
| CRC | 4 | <i>Crataegus crus-galli</i> 'Thornless' | Thornless Cockspur Hawthorn | 50mm Cal | WB | As Shown |
| GB | 4 | <i>Ginkgo biloba</i> | Ginkgo (Male) | 50mm Cal | WB | As Shown |
| GBST | 4 | <i>Ginkgo biloba</i> 'Sky Tower' | Sky Tower Ginkgo (Male) | 200cm 10g | PT | As Shown |
| GTS | 6 | <i>Gleditsia triacanthos</i> var. <i>inermis</i> 'Shademaster' | Shademaster Honeylocust | 50mm Cal | WB | As Shown |
| GYE | 9 | <i>Gymnocladus dioica</i> 'Espresso-JFS' | Espresso Kentucky Coffee Tree | 50mm Cal | WB | As Shown |
| NSW | 6 | <i>Nyssa sylvatica</i> 'Wildfire' | Wildfire Black Gum | 50mm Cal | WB | As Shown |
| QR | 1 | <i>Quercus rubra</i> | Red Oak | 50mm Cal | WB | As Shown |
| TA | 6 | <i>Tilia americana</i> | Basswood | 50mm Cal | WB | As Shown |
| UAV | 8 | <i>Ulmus americana</i> 'Valley Forge' | Valley Forge Elm | 50mm Cal | WB | As Shown |



NOVATECH
Engineers, Planners & Landscape Architects
Suite 200, 240 Michael Cowpland Drive
Ottawa, Ontario, Canada K2M 1P6
Telephone: (613) 254-9643
Facsimile: (613) 254-5867
Website: www.novatech-eng.com

LOCATION
CITY OF OTTAWA
99 BILL LEATHEN, 2 & 20 LEIKEN DRIVE

DRAWING NAME
LANDSCAPE PLAN

PROJECT NO.: 124123
REV # 3
DRAWING NO.: 124123-L4

NOT FOR CONSTRUCTION

NOTE:
THE POSITION OF ALL POLE LINES, CONDUITS, WATERMANS, SEWERS AND OTHER UNDERGROUND AND OVERGROUND UTILITIES AND STRUCTURES IS NOT NECESSARILY SHOWN ON THE CONTRACT DRAWINGS, AND WHERE SHOWN, THE ACCURACY OF THE POSITION OF SUCH UTILITIES AND STRUCTURES IS NOT GUARANTEED. BEFORE STARTING WORK, DETERMINE THE EXACT LOCATION OF ALL SUCH UTILITIES AND STRUCTURES AND ASSUME ALL LIABILITY FOR DAMAGE TO THEM.

| No. | REVISION | DATE | BY |
|-----|----------------------------------|-----------|-----|
| 3 | REVISED PER CITY COMMENTS | DEC 11/24 | RGJ |
| 2 | ISSUED FOR RFP TENDER SET 60% | NOV 21/24 | RGJ |
| 1 | ISSUED FOR SITE PLAN APPLICATION | OCT 29/24 | RGJ |

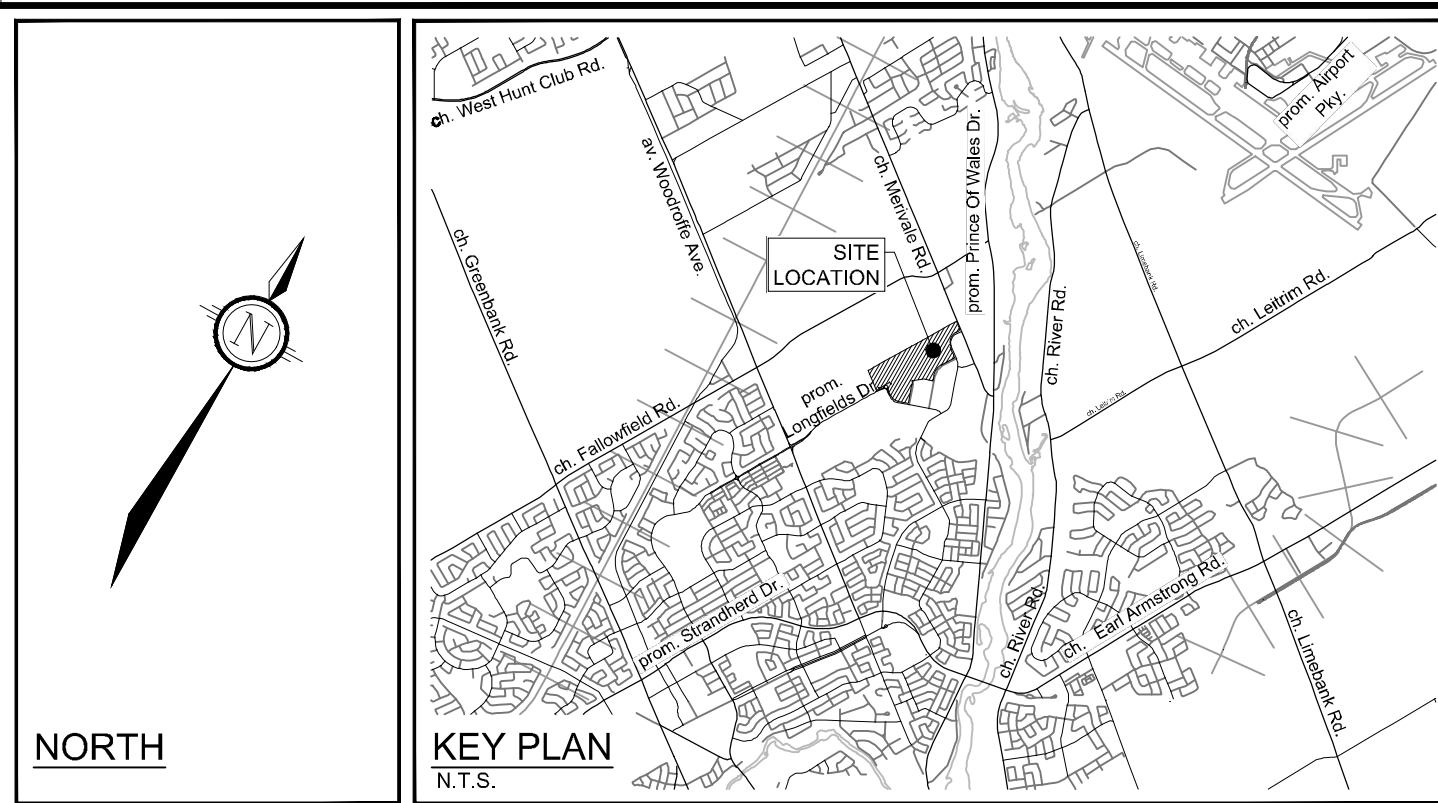
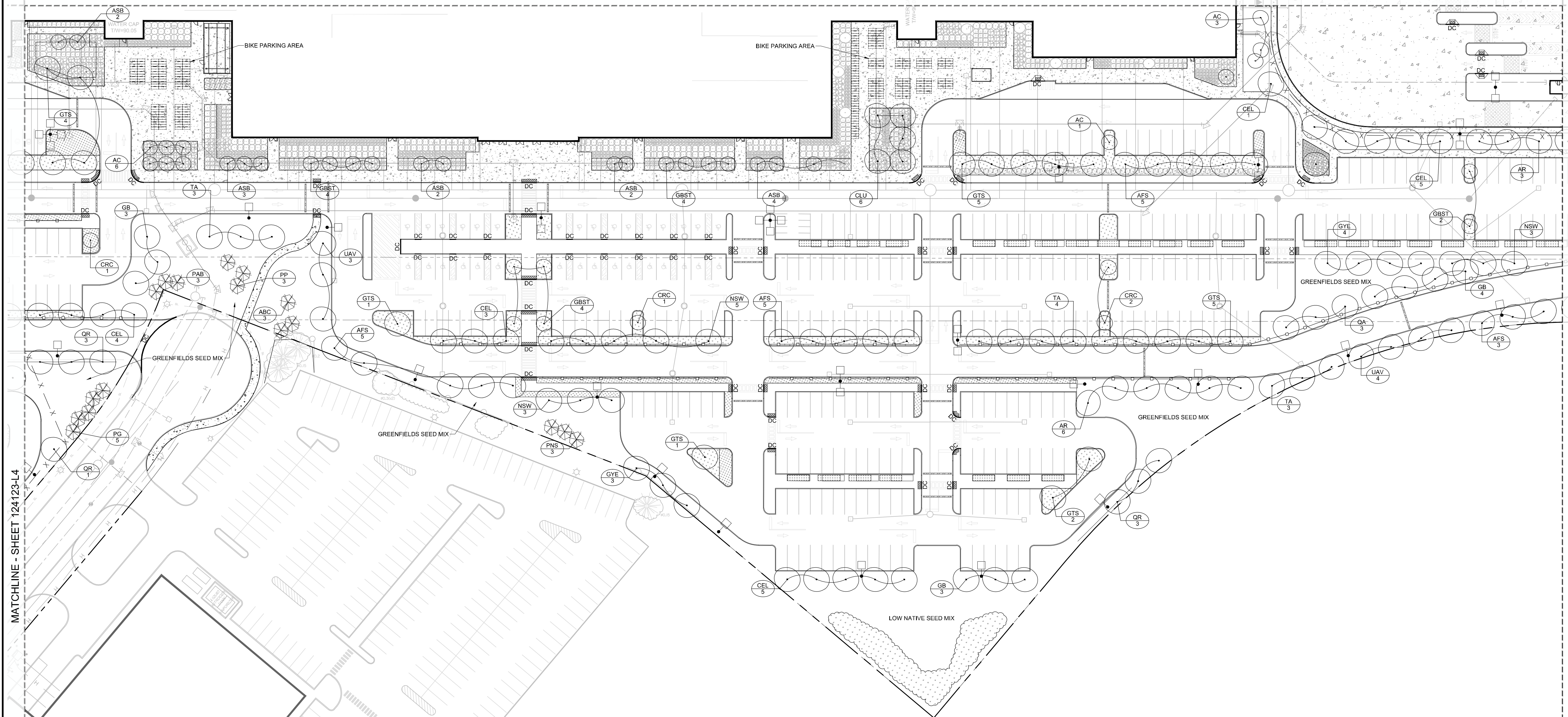
SCALE: 1:500

FOR REVIEW ONLY

DESIGN: MJT
CHECKED: RGJ
DRAWN: MJT
CHECKED: RGJ
APPROVED: RGJ

C:\Users\lilyxu\Documents\124123-L4.dwg, L4, Dec 17, 2024, 2:53pm, mmmuham

D07-12-24-0139



LEGEND

- 3-D1 DETAIL SHEET # NOVATECH OR CITY DETAIL NUMBER SEE LIST FOR CODE
- PROPERTY LIMIT
- PROPOSED CONCRETE
- SHRUBS AND PERENNIALS - TREE COMPANION PLANTING
- SHRUBS AND PERENNIALS
- REFORESTATION AREA
- PROPOSED DECIDUOUS TREE
- PROPOSED CONIFEROUS TREE
- EXISTING TREE TO REMAIN
- EXISTING TREE TO REMOVE
- PROPOSED SHRUBS (SEE PLANT LIST)
- KEY ## QUANTITY
- PROPOSED CHAINLINK FENCE (REFER TO ARCHITECTURAL DETAILS)
- PROPOSED PEDESTRIAN FENCE 1.5m HT

GENERAL

1. Read and interpret this drawing/ drawing set in conjunction with all the contract details and specifications, including related civil, utility, structural, architectural, mechanical, electrical, environmental, geotechnical, and survey information.
2. The Contractor is to determine the exact location, size, material, and elevation of all existing utilities prior to commencing construction. Protect and assume responsibility for all existing utilities regardless of being shown on the drawings.
3. It is essential to use the plans and details in conjunction with the specifications and notes.
4. Do not scale drawings. Work to dimensions only.
5. Protect all existing and retained vegetation for the duration of construction according to the contract details and specifications.
6. Reinstale all areas and items damaged or disturbed, beyond the Limit of Work, because of construction activities, including but not limited to construction staging areas, haul roads, stockpile areas, etc. to the satisfaction of the Consultant. Unless otherwise noted, Contractor is to reinstale all areas to pre-construction condition or better to the satisfaction of the Contract Administrator.

PLANTING

1. Plant material to be No. 1 Grade and is to comply with Canadian Standards for Nursery Stock (latest edition) published by the Canadian Nursery Landscape Association.
2. Use structurally sound plant material with strong fibrous root system free of disease, defects, and injuries. Use trees with straight trunks, well and characteristically branched for species. Obtain approval from consultant of plant material at source prior to digging. All trees and shrubs to be container grown, potted, WB or B/B, as indicated on Plant List. Bare root plants are only acceptable for certain species and as approved by the Landscape Architect.
3. Plant material substitutions are not permitted without the written approval from the Consultant, with 48 hours notice, prior to shipping plant material.
4. Plant locations are schematic / approximate only. Contractor is to stake out locations on site for approval by the Landscape Architect prior to installation.
5. The illustrated number of plants shown in the Planting Plan supersedes the estimated number in the Plant List. Contractor to report any discrepancies to the Landscape Architect prior to installation. Contractor will assume full responsibility if the Landscape Architect is not notified.
6. Ensure trees are thoroughly watered following planting. Monitor material and ensure adequate moisture until acceptance.
7. In heavy clay or poorly drained soils, set root ball with root collar 75-100mm higher than finished grade.
8. Approved topsoil depths are as follows:
 - a. Plant Beds - 450mm continuous depth. Applies to shrubs, perennials, vines, and groundcovers.
 - b. Sod Seed Areas - 100mm depth.
 - c. Reforestation - 300mm depth.
9. Sod to be No. 1 Kentucky Bluegrass Sod grown from minimum mixture of 3 Kentucky Bluegrass cultivars. Quality and source are to comply with Canadian Standards for Nursery Stock, Section 17, (latest edition) published by the Canadian Nursery Landscape Nursery Landscape Association.
 - a. Plant Beds - (8-32-16), i.e. 8% Nitrogen, 32% Phosphorus, 16% Potash per manufacturer specifications.
 - b. Sod Areas - (8-32-16), i.e. 8% Nitrogen, 32% Phosphorus, 16% Potash at a rate of 350kg/ha.
12. Where applicable, for any plant areas with a mix of species/ cultivars notes, Contractor is to cluster like plants in groups of 3-5 and evenly distribute these in the noted area.

NOTE:

SEED MIXES AND NOTES CAN BE FOUND ON THE NOTES AND DETAILS SHEET OF THE LANDSCAPE DRAWING PACKAGE.

PLANT LIST (PRELIMINARY)

| KEY | QTY | BOTANICAL NAME | COMMON NAME | SIZE | COND | SPACING |
|-------------------------|-----|--|-------------------------------|-----------|------|-----------|
| Coniferous Trees | | | | | | |
| AESC | 3 | <i>Abies concolor</i> | White Fir | 200cm H | WB | As Show'n |
| PAB | 3 | <i>Picea abies</i> | Norway Spruce | 200cm H | WB | As Show'n |
| PG | 5 | <i>Picea glauca</i> | White Spruce | 200cm H | WB | As Show'n |
| PP | 3 | <i>Picea pungens</i> | Colorado Spruce | 200cm H | WB | As Show'n |
| PNS | 3 | <i>Pinus strobus</i> | Eastern White Pine | 200cm H | WB | As Show'n |
| Deciduous Trees | | | | | | |
| AR | 8 | <i>Acer rubrum</i> | Red Maple | 50mm Cal | WB | As Show'n |
| ASB | 11 | <i>Acer saccharum</i> 'Barrett Cole' | Apollo Sugar Maple | 50mm Cal | WB | As Show'n |
| AFS | 12 | <i>Acer x Freemanii</i> 'Siema' | Siema Glen Maple | 50mm Cal | WB | As Show'n |
| AC | 11 | <i>Amelanchier canadensis</i> (Single stem) | Shadbolt Serviceberry | 45mm Cal | WB | As Show'n |
| CEL | 12 | <i>Celtis occidentalis</i> | Hickory | 50mm Cal | WB | As Show'n |
| CLU | 3 | <i>Cladrasia kentukea</i> (formerly 'lutea') | Yellowwood | 50mm Cal | WB | As Show'n |
| CRC | 5 | <i>Crataegus crus-galli</i> 'Inermis' | Thornless Cockspur Hawthorn | 50mm Cal | WB | As Show'n |
| GB | 10 | <i>Ginkgo biloba</i> | Ginkgo (Male) | 50mm Cal | WB | As Show'n |
| GBST | 16 | <i>Ginkgo biloba</i> 'Sky Tower' | Sky Tower Ginkgo (Male) | 200cm 10g | FT | As Show'n |
| GTS | 12 | <i>Gleditsia triacanthos</i> var. <i>inermis</i> 'Shademaster' | Shademaster Honeylocust | 50mm Cal | WB | As Show'n |
| GYE | 7 | <i>Gymnocladus dioica</i> 'Espresso-JFS' | Espresso Kentucky Coffee Tree | 50mm Cal | WB | As Show'n |
| NSW | 6 | <i>Nyssa sylvatica</i> 'Wildfire' | Wildfire Black Gum | 50mm Cal | WB | As Show'n |
| QA | 3 | <i>Quercus alba</i> | White Oak | 50mm Cal | WB | As Show'n |
| QR | 7 | <i>Quercus rubra</i> | Red Oak | 50mm Cal | WB | As Show'n |
| TA | 6 | <i>Tilia americana</i> | Basswood | 50mm Cal | WB | As Show'n |
| UAV | 7 | <i>Ulmus americana</i> 'Valley Forge' | Valley Forge Elm | 50mm Cal | WB | As Show'n |

APPROVED
By Lily Xu at 2:53 pm, Jan 23, 2025

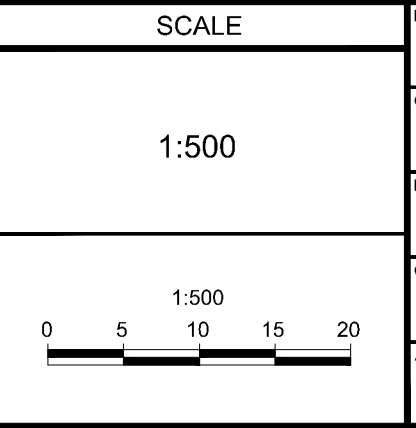
Lily Xu

LILY XU, MCIP, RPP
MANAGER, DEVELOPMENT REVIEW SOUTH
PLANNING, DEVELOPMENT, AND BUILDING SERVICES
DEPARTMENT, CITY OF OTTAWA

**NOT FOR
CONSTRUCTION**

NOTE:
THE POSITION OF ALL POLE LINES, CONDUITS,
WATERMANS, SEWERS AND OTHER
UNDERGROUND AND OVERGROUND UTILITIES AND
STRUCTURES IS NOT NECESSARILY SHOWN ON
THE CONTRACT DRAWINGS, AND WHERE SHOWN,
THE ACCURACY OF THE POSITION OF SUCH
UTILITIES AND STRUCTURES IS NOT GUARANTEED.
BEFORE STARTING WORK, DETERMINE THE EXACT
LOCATION OF ALL SUCH UTILITIES AND
STRUCTURES AND ASSUME ALL LIABILITY FOR
DAMAGE TO THEM.

| No. | REVISION | DATE | BY |
|-----|----------------------------------|-----------|-----|
| 3 | REVISED PER CITY COMMENTS | DEC 11/24 | RGJ |
| 2 | ISSUED FOR RFP TENDER SET 60% | NOV 21/24 | RGJ |
| 1 | ISSUED FOR SITE PLAN APPLICATION | OCT 29/24 | RGJ |

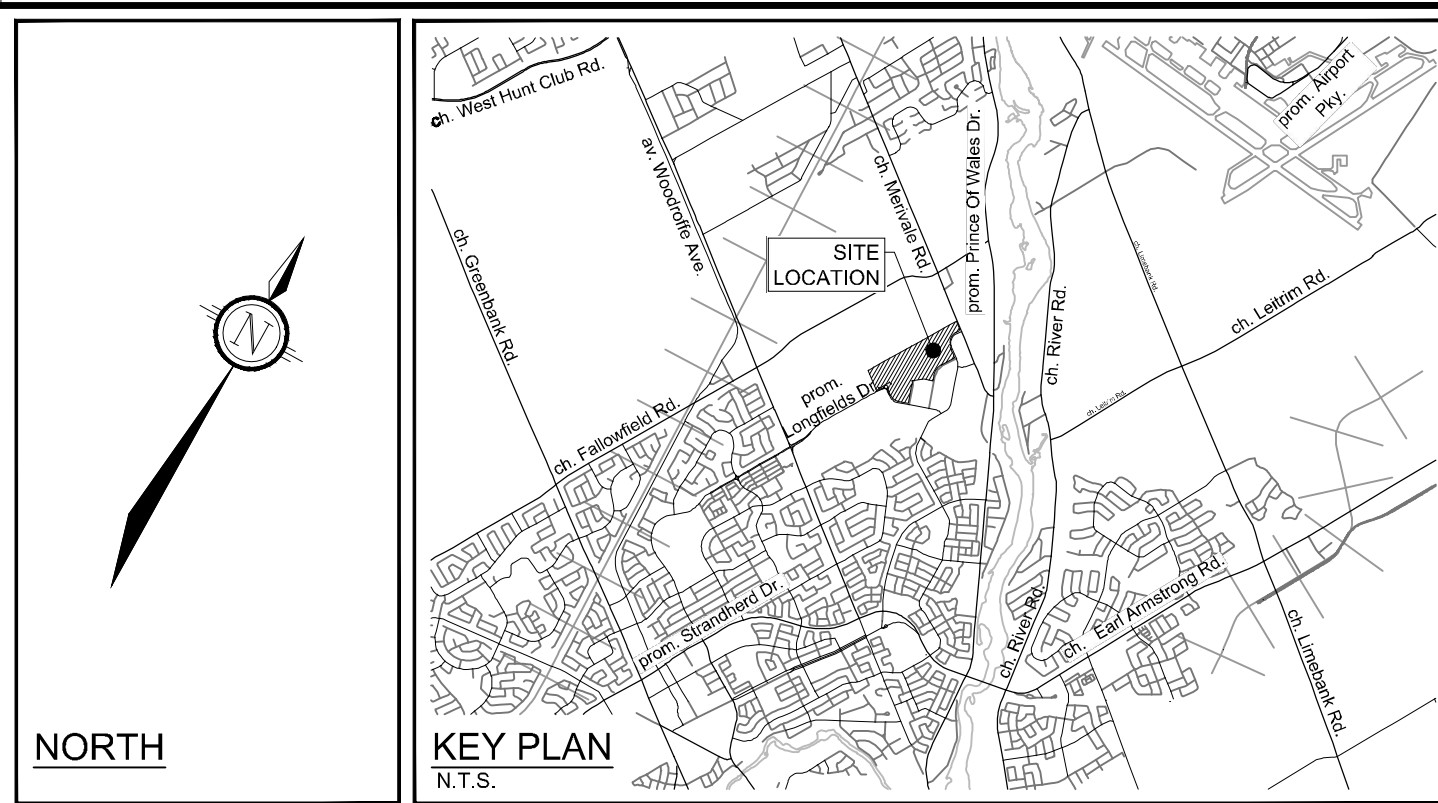
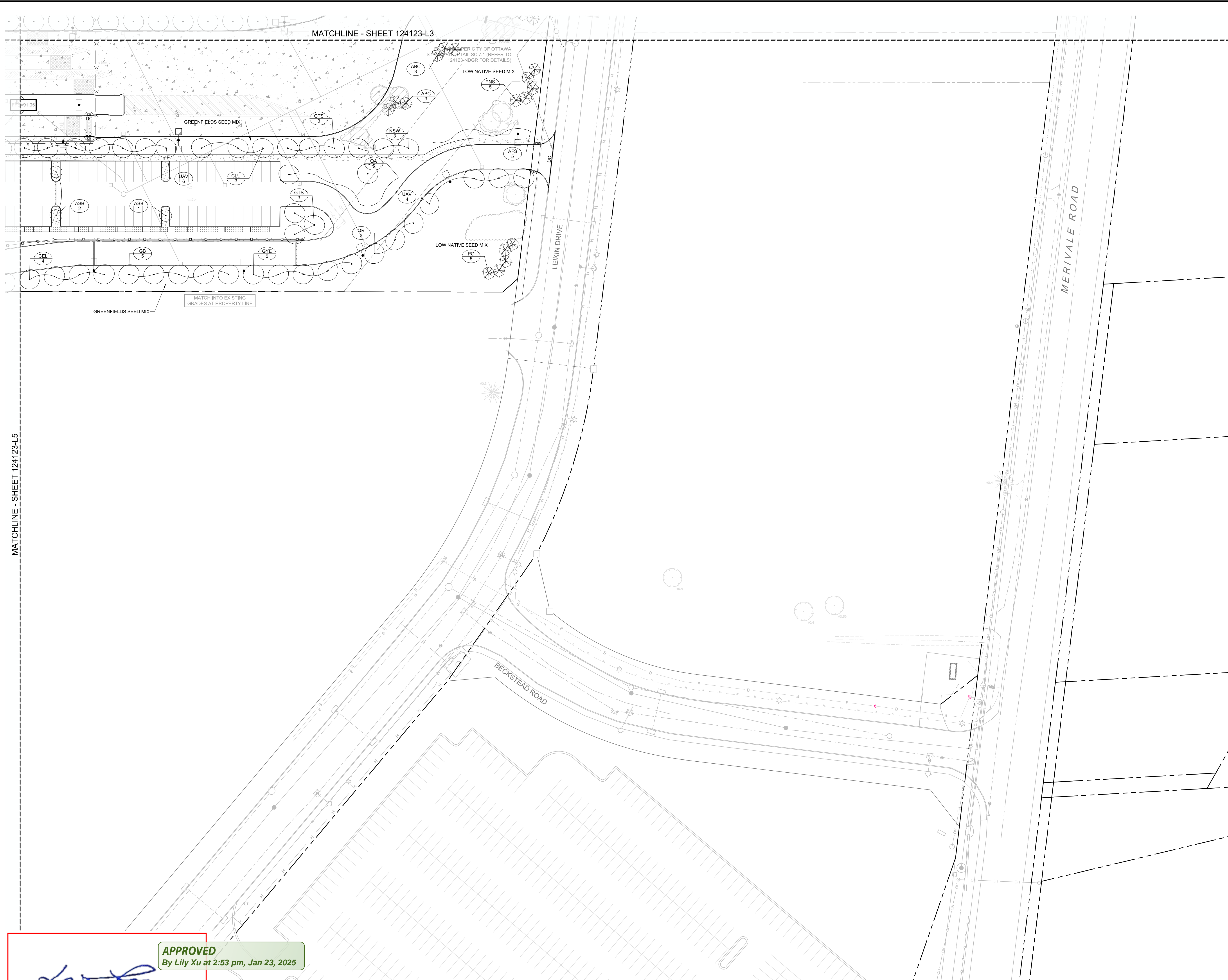


| DESIGN | FOR REVIEW ONLY |
|---------------|-----------------|
| CHECKED: MJT | |
| DRAWN: RGJ | |
| CHECKED: MJT | |
| APPROVED: RGJ | |



NOVATECH
Engineers, Planners & Landscape Architects
Suite 200, 240 Michael Cowpland Drive
Ottawa, Ontario, Canada K2M 1P6
Telephone: (613) 254-9643
Facsimile: (613) 254-5867
Website: www.novatech-eng.com

| | |
|--|--------------------------|
| LOCATION CITY OF OTTAWA 99 BILL LEATHAM, 2 & 20 LEIKEN DRIVE | PROJECT NO. 124123 |
| DRAWING NAME LANDSCAPE PLAN | REV # REV # 3 |
| | DRAWING NO. 124123-L5 |



- LEGEND**
- 3-D1 DETAIL SHEET # NOVATECH OR CITY OF OTTAWA - DETAIL NUMBER SEE LIST FOR CODE
 - PROPERTY LIMIT
 - PROPOSED CONCRETE
 - SHRUBS AND PERENNIALS - TREE COMPANION PLANTING
 - SHRUBS AND PERENNIALS
 - REFORESTATION AREA
 - PROPOSED DECIDUOUS TREE
 - PROPOSED CONIFEROUS TREE
 - EXISTING TREE TO REMAIN
 - EXISTING TREE TO REMOVE
 - PROPOSED SHRUBS
 - SPECIES (SEE PLANT LIST)
 - KEY ## QUANTITY
 - PROPOSED CHAINLINK FENCE (REFER TO ARCHITECTURAL DETAILS)
 - PROPOSED PEDESTRIAN FENCE 1.5m HT

- GENERAL**
- Read and interpret this drawing/ drawing set in conjunction with all the contract details and specifications, including related civil, utility, structural, architectural, mechanical, electrical, environmental, geotechnical, and survey information.
 - The Contractor is to determine the exact location, size, material, and elevation of all existing utilities prior to commencing construction. Protect and assume responsibility for all existing utilities regardless of being shown on the drawings.
 - It is essential to use the plans and details in conjunction with the specifications and notes.
 - Do not scale drawings. Work to dimensions only.
 - Protect all existing and retained vegetation for the duration of construction according to the contract details and specifications.
 - Reinstate all areas and items damaged or disturbed, beyond the Limit of Work, because of construction activities, including but not limited to construction staging areas, haul roads, stockpile areas, etc. to the satisfaction of the Consultant. Unless otherwise noted, Contractor is to reinstate all areas to pre-construction condition or better to the satisfaction of the Contract Administrator.

- PLANTING**
- Plant material to be No. 1 Grade and is to comply with Canadian Standards for Nursery Stock (latest edition) published by the Canadian Nursery Landscape Association. Use structurally sound plant material with strong fibrous root system free of diseases, defects, and injuries. Use trees with straight trunks, well and characteristically branched for species. Obtain approval from consultant of plant material at source prior to digging. All trees and shrubs to be container grown, potted, W/B or B/B, as indicated on Plant List. Bare root plants are only acceptable for certain species and as approved by the Landscape Architect.
 - Plant material substitutions are not permitted without the written approval from the Consultant, with 48 hours notice, prior to shipping plant material.
 - Plant locations are schematic / approximate only. Contractor is to stake out locations on site for approval by the Landscape Architect prior to installation.
 - The illustrated number of plants shown in the Planting Plan supersedes the estimated number in the Plant List. Contractor to report any discrepancies to the Landscape Architect prior to installation. Contractor will assume full responsibility if the Landscape Architect is not notified.
 - Ensure trees are thoroughly watered following planting. Monitor material and ensure adequate moisture until acceptance.
 - In heavy clay or poorly drained soils, set root ball with root collar 75-100mm higher than finished grade.
 - Approved topsoil depths are as follows:
 - Plant Beds - 450mm continuous depth. Applies to shrubs, perennials, vines, and groundcovers.
 - Sod Seed Areas - 100mm depth.
 - Reforestation - 300mm depth.
 - Sod to be No. 1 Kentucky Bluegrass Sod grown from minimum mixture of 3 Kentucky Bluegrass cultivars. Quality and source are to comply with Canadian Standards for Nursery Stock, Section 17, (latest edition) published by the Canadian Nursery Landscape Nursery Landscape Association.
 - Apply the following mineral fertilizer unless soil tests show other requirements:
 - Plant Beds - (8-32-16), i.e. 8% Nitrogen, 32% Phosphorus, 16% Potash per manufacturer specifications.
 - Sod Areas - (8-32-16), i.e. 8% Nitrogen, 32% Phosphorus, 16% Potash at a rate of 350kg/ha.
 - Where applicable, for any plant areas with a mix of species/ cultivars notes, Contractor is to cluster like plants in groups of 3-5 and evenly distribute these in the noted area.

PLANT LIST (PRELIMINARY)

| KEY | QTY | BOTANICAL NAME | COMMON NAME | SIZE | COND | SPACING |
|-------------------------|-----|---|-------------------------------|----------|------|----------|
| Coniferous Trees | | | | | | |
| ABC | 1 | Abies concolor | White Fir | 200cm H | WB | As Shown |
| PG | 5 | Picea glauca | White Spruce | 200cm H | WB | As Shown |
| PNS | 5 | Pinus strobus | Eastern White Pine | 200cm H | WB | As Shown |
| Deciduous Trees | | | | | | |
| ASB | 2 | Acer saccharum 'Barrett Cole' | Apollo Sugar Maple | 50mm Cal | WB | As Shown |
| AFS | 5 | Acer x freemanii 'Sienna' | Sienna Glen Maple | 50mm Cal | WB | As Shown |
| CEL | 3 | Celtis occidentalis | Hackberry | 50mm Cal | WB | As Shown |
| CLU | 3 | Cladonia kentuckee (formerly 'lutea') | Yellow wood | 50mm Cal | WB | As Shown |
| GB | 5 | Ginkgo biloba | Ginkgo (Male) | 50mm Cal | WB | As Shown |
| GTS | 6 | Gleditsia tricanthos var. inermis 'Shademaster' | Shademaster Honeylocust | 50mm Cal | WB | As Shown |
| GYE | 5 | Gymnocladus dioica 'Espresso-JFS' | Espresso Kentucky Coffee Tree | 50mm Cal | WB | As Shown |
| NSW | 3 | Nyssa sylvatica 'Wildfire' | Wildfire Black Gum | 50mm Cal | WB | As Shown |
| QA | 4 | Quercus alba | White Oak | 50mm Cal | WB | As Shown |
| QR | 3 | Quercus rubra | Red Oak | 50mm Cal | WB | As Shown |
| UAV | 9 | Ulmus americana 'Valley Forge' | Valley Forge Elm | 50mm Cal | WB | As Shown |

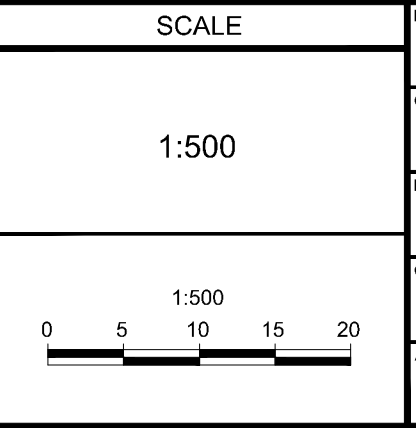
APPROVED
By Lily Xu at 2:53 pm, Jan 23, 2025

Lily Xu

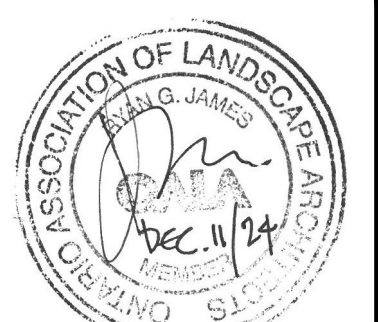
LILY XU, MCIP, RPP
MANAGER, DEVELOPMENT REVIEW SOUTH
PLANNING, DEVELOPMENT, AND BUILDING SERVICES
DEPARTMENT, CITY OF OTTAWA

NOT FOR CONSTRUCTION

| No. | REVISION | DATE | BY |
|-----|----------------------------------|-----------|-----|
| 3 | REVISED PER CITY COMMENTS | DEC 11/24 | RGJ |
| 2 | ISSUED FOR RFP TENDER SET 60% | NOV 21/24 | RGJ |
| 1 | ISSUED FOR SITE PLAN APPLICATION | OCT 29/24 | RGJ |



| FOR REVIEW ONLY |
|-----------------|
| DESIGN: MJT |
| CHECKED: RGJ |
| DRAWN: MJT |
| CHECKED: RGJ |
| APPROVED: RGJ |



NOVATECH
Engineers, Planners & Landscape Architects
Suite 200, 240 Michael Copeland Drive
Ottawa, Ontario, Canada K2M 1P6
Telephone: (613) 254-9643
Facsimile: (613) 254-5867
Website: www.novatech-eng.com

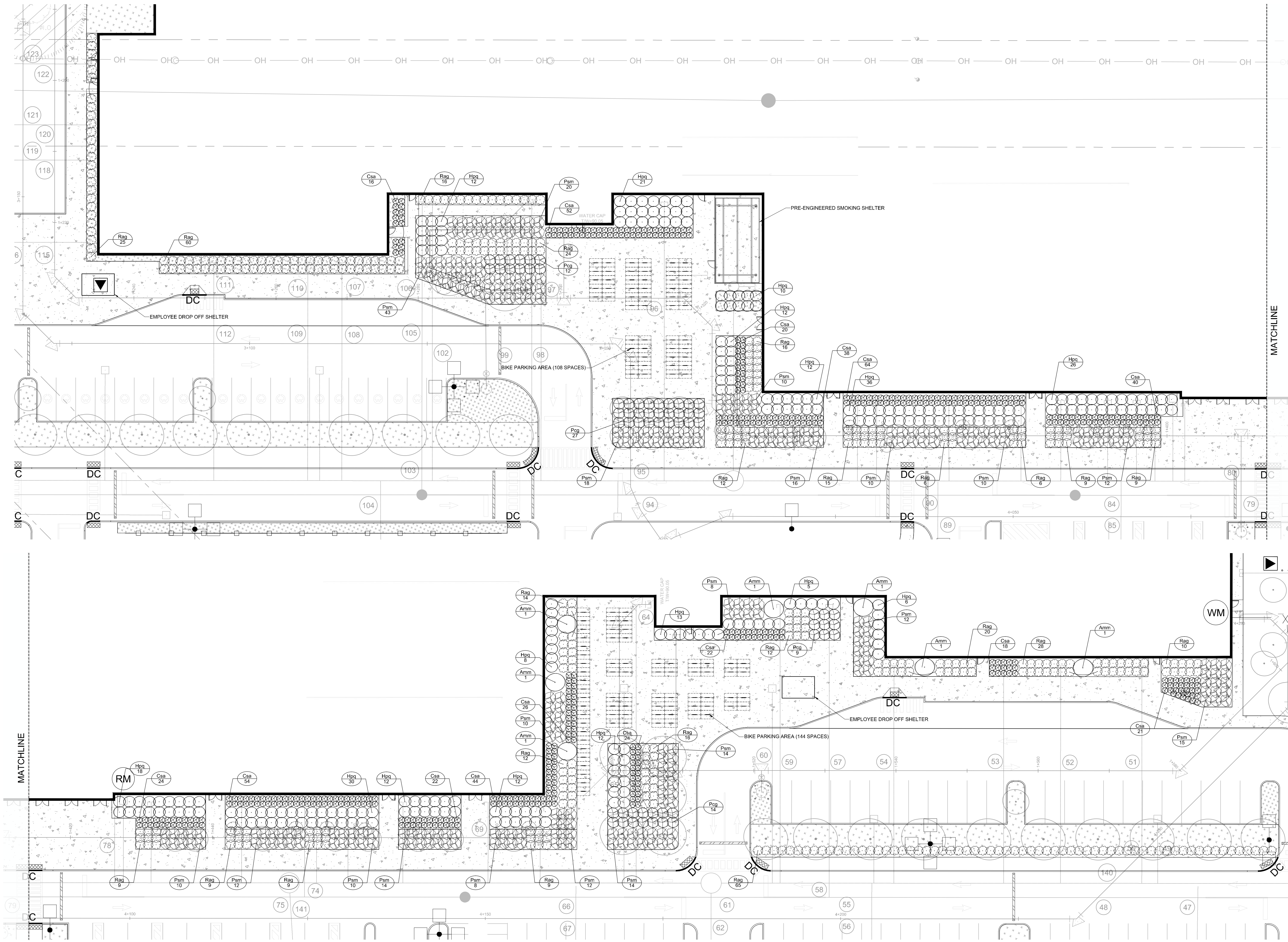
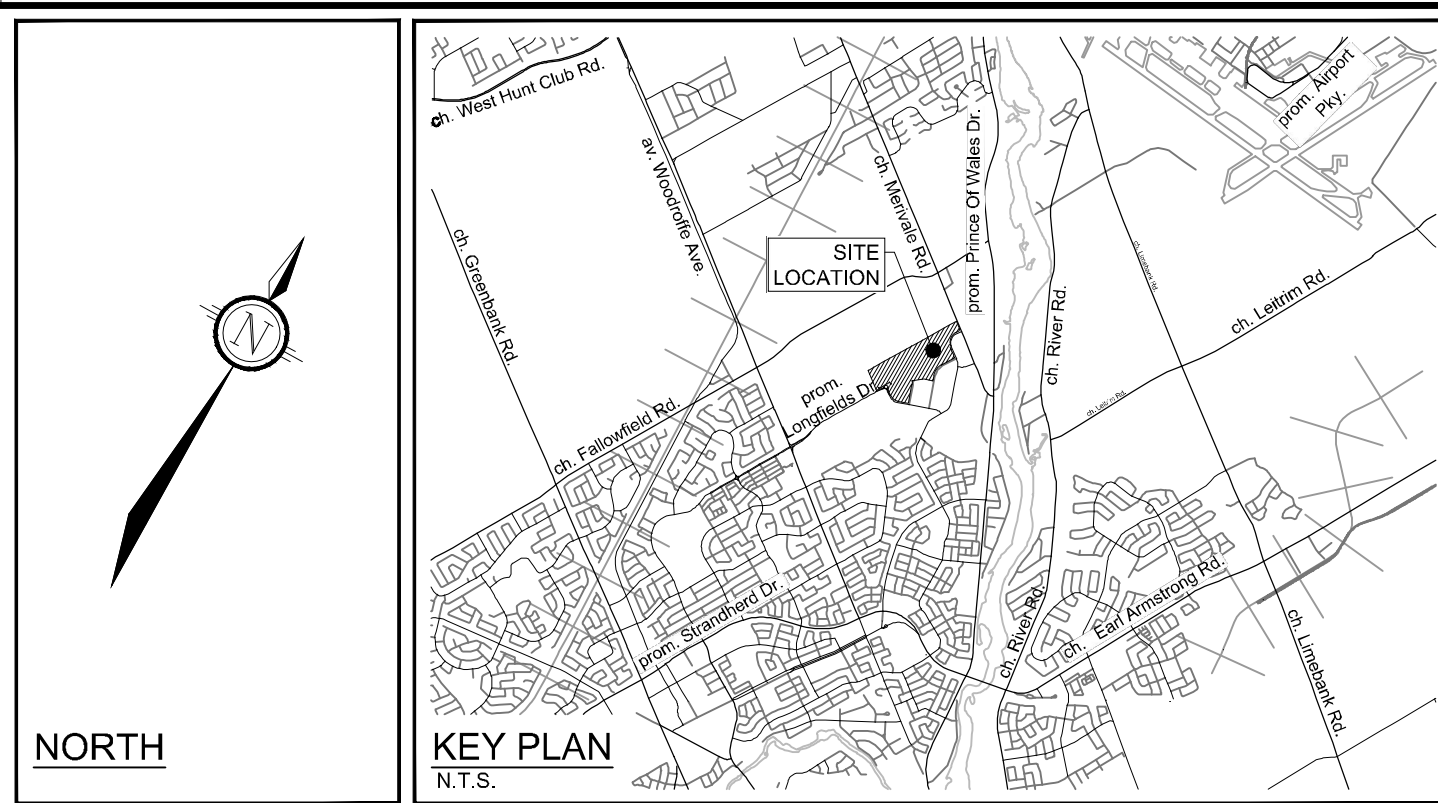
| | |
|--|--------------------------|
| LOCATION CITY OF OTTAWA 99 BILL LEATHAM, 2 & 20 LEIKIN DRIVE | PROJECT NO. 124123 |
| DRAWING NAME LANDSCAPE PLAN | REV # 3 |
| | DRAWING NO. 124123-L6 |

C:\Users\mrc\Documents\mrc\124123-L6.dwg, L6, Dec 12, 2024, 2:53pm, mrc

D07-12-24-0139

APPROVED
By Lily Xu at 2:52 pm, Jan 23, 2025

LILY XU, MCIP, RPP
MANAGER, DEVELOPMENT REVIEW SOUTH
PLANNING, DEVELOPMENT, AND BUILDING SERVICES
DEPARTMENT, CITY OF OTTAWA



- LEGEND**
- 3-D1 DETAIL SHEET # NOVATECH OR CITY - DETAIL NUMBER SEE LIST FOR CODE
 - PROPERTY LIMIT
 - PROPOSED CONCRETE
 - SHRUBS AND PERENNIALS - TREE COMPANION PLANTING
 - SHRUBS AND PERENNIALS
 - REFORESTATION AREA
 - PROPOSED DECIDUOUS TREE
 - PROPOSED CONIFEROUS TREE
 - EXISTING TREE TO REMAIN
 - EXISTING TREE TO REMOVE
 - PROPOSED SHRUBS (SEE PLANT LIST)
 - KEY ## QUANTITY
 - PROPOSED CHAINLINK FENCE (REFER TO ARCHITECTURAL DETAILS)
 - PROPOSED PEDESTRIAN FENCE 1.5m HT

- GENERAL**
- Read and interpret this drawing/ drawing set in conjunction with all the contract details and specifications, including related civil, utility, structural, architectural, mechanical, electrical, environmental, geotechnical, and survey information.
 - The Contractor is to determine the exact location, size, material, and elevation of all existing utilities prior to commencing construction. Protect and assume responsibility for all existing utilities regardless of being shown on the drawings.
 - It is essential to use the plans and details in conjunction with the specifications and notes.
 - Do not scale drawings. Work to dimensions only.
 - Protect all existing and retained vegetation for the duration of construction according to the contract details and specifications.
 - Reinstate all areas and items damaged or disturbed, beyond the Limit of Work, because of construction activities, including but not limited to construction staging areas, haul roads, stockpile areas, etc. to the satisfaction of the Consultant. Unless otherwise noted, Contractor is to reinstate all areas to pre-construction condition or better to the satisfaction of the Contract Administrator.

- PLANTING**
- Plant material to be No. 1 Grade and is to comply with Canadian Standards for Nursery Stock (latest edition) published by the Canadian Nursery Landscape Association. Use structurally sound plant material with strong fibrous root system free of disease, defects, and injuries. Use trees with straight trunks, well and characteristically branched for species. Obtain approval from consultant of plant material at source prior to digging. All trees and shrubs to be container grown, potted, W/B or B/B, as indicated on Plant List. Bare root plants are only acceptable for certain species and as approved by the Landscape Architect.
 - Plant material substitutions are not permitted without the written approval from the Consultant, with 48 hours notice, prior to shipping plant material.
 - Plant locations are schematic / approximate only. Contractor is to stake out locations on site for approval by the Landscape Architect prior to installation.
 - The illustrated number of plants shown in the Planting Plan supersedes the estimated number in the Plant List. Contractor to report any discrepancies to the Landscape Architect prior to installation. Contractor will assume full responsibility if the Landscape Architect is not notified.
 - Ensure trees are thoroughly watered following planting. Monitor material and ensure adequate moisture until acceptance.
 - In heavy clay or poorly drained soils, set root ball with root collar 75-100mm higher than finished grade.
 - Approved topsoil depths are as follows:
 - Plant Beds - 450mm continuous depth. Applies to shrubs, perennials, vines, and groundcovers.
 - Sod Seed Areas - 100mm depth.
 - Reforestation - 300mm depth.
 - Sod to be No. 1 Kentucky Bluegrass Sod grown from minimum mixture of 3 Kentucky Bluegrass cultivars. Quality and source are to comply with Canadian Standards for Nursery Stock, Section 17, (latest edition) published by the Canadian Nursery Landscape Nursery Landscape Association.
 - Apply the following mineral fertilizer unless soil tests show other requirements:
 - Plant Beds - (8-32-16), i.e. 8% Nitrogen, 32% Phosphorus, 16% Potash per manufacturer specifications.
 - Sod Areas - (8-32-16), i.e. 8% Nitrogen, 32% Phosphorus, 16% Potash at a rate of 350g/ha.
 - Where applicable, for any plant areas with a mix of species/ cultivars notes, Contractor is to cluster like plants in groups of 3-5 and evenly distribute these in the noted area.

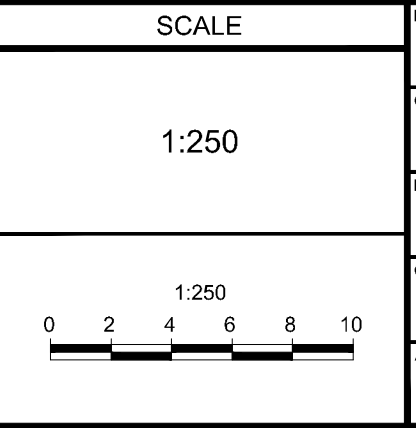
PLANT LIST (PRELIMINARY)

| KEY | QTY | BOTANICAL NAME | COMMON NAME | SIZE | COND | SPACING |
|--------------------------|-----|--|------------------------|---------|------|-----------|
| Coniferous Shrubs | | | | | | |
| Pim | 278 | <i>Pinus mugo</i> 'Slowmount' | Slowmount Mugo Pine | 3g | FT | As Show n |
| Deciduous Shrubs | | | | | | |
| Amm | 7 | <i>Amenchier canadensis</i> (Multi stem) | Canadian Serviceberry | 150cm H | WB | As Show n |
| Csa | 464 | <i>Cornus sericea</i> 'Farrow' | Arctic Fire Dogwood | 60cm H | FT | As Show n |
| Hpq | 245 | <i>Hydrangea paniculata</i> 'Quick Fire' | Quick Fire Hydrangea | 60cm H | FT | As Show n |
| Pcg | 53 | <i>Phytocarpus opulifolius</i> 'Centre Glow' | Centre Glow Ninebark | 60cm H | FT | As Show n |
| Rag | 411 | <i>Rhus aromatica</i> 'Gro-Low' | Gro-Low Fragrant Sumac | 60cm H | FT | As Show n |

NOTE:
THE POSITION OF ALL POLE LINES, CONDUITS, WATERMANS, SEWERS AND OTHER UNDERGROUND AND OVERGROUND UTILITIES AND STRUCTURES IS NOT NECESSARILY SHOWN ON THE CONTRACT DRAWINGS, AND WHERE SHOWN, THE ACCURACY OF THE POSITION OF SUCH UTILITIES AND STRUCTURES IS NOT GUARANTEED. BEFORE STARTING WORK, DETERMINE THE EXACT LOCATION OF ALL SUCH UTILITIES AND STRUCTURES AND ASSUME ALL LIABILITY FOR DAMAGE TO THEM.

NOT FOR CONSTRUCTION

| No. | REVISION | DATE | BY |
|-----|----------------------------------|-----------|-----|
| 3 | REVISED PER CITY COMMENTS | DEC 11/24 | RGJ |
| 2 | ISSUED FOR RFP TENDER SET 60% | NOV 21/24 | RGJ |
| 1 | ISSUED FOR SITE PLAN APPLICATION | OCT 29/24 | RGJ |



| FOR REVIEW ONLY |
|-----------------|
| DESIGN: MJT |
| CHECKED: RGJ |
| DRAWN: MJT |
| CHECKED: RGJ |
| APPROVED: RGJ |



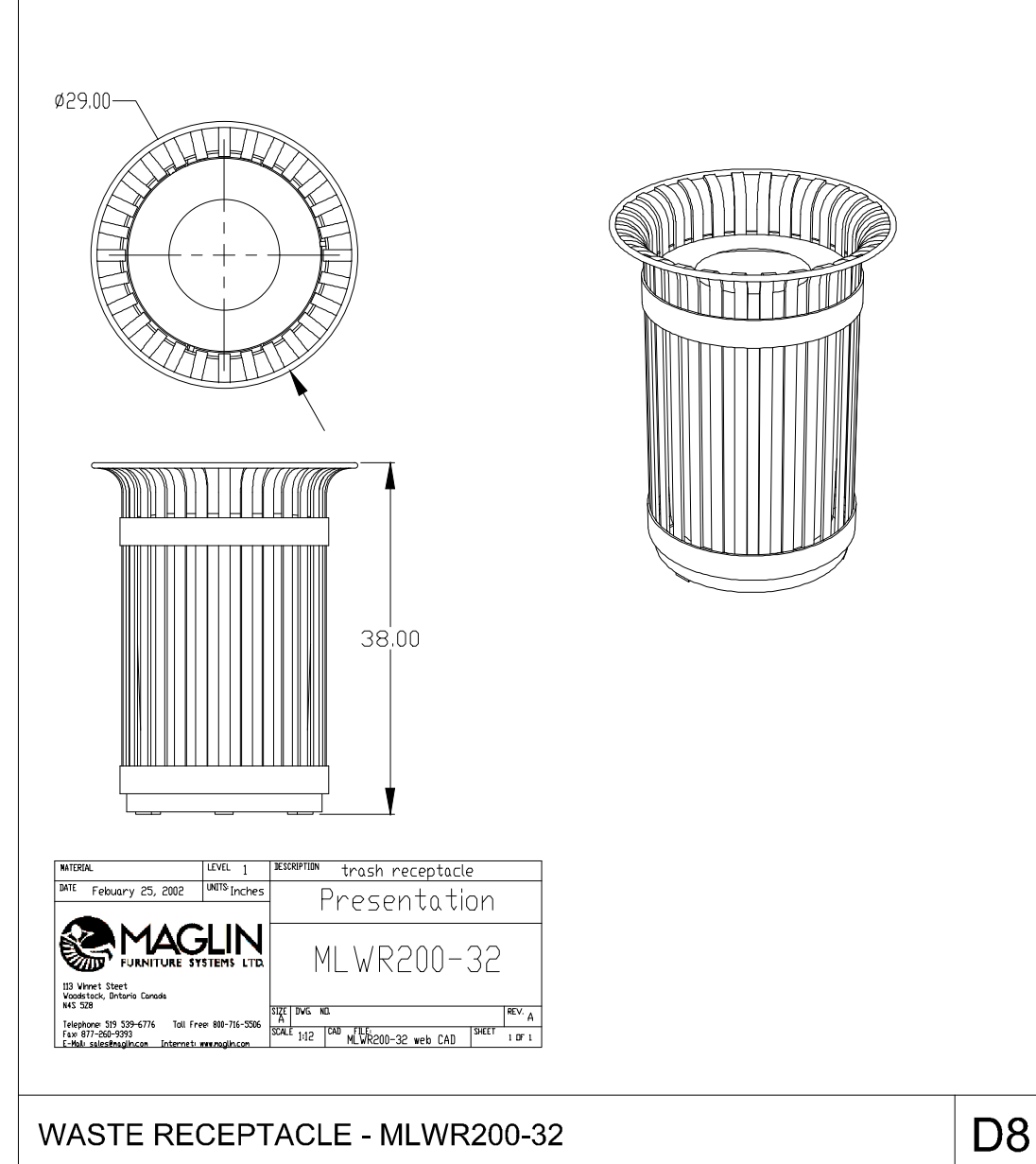
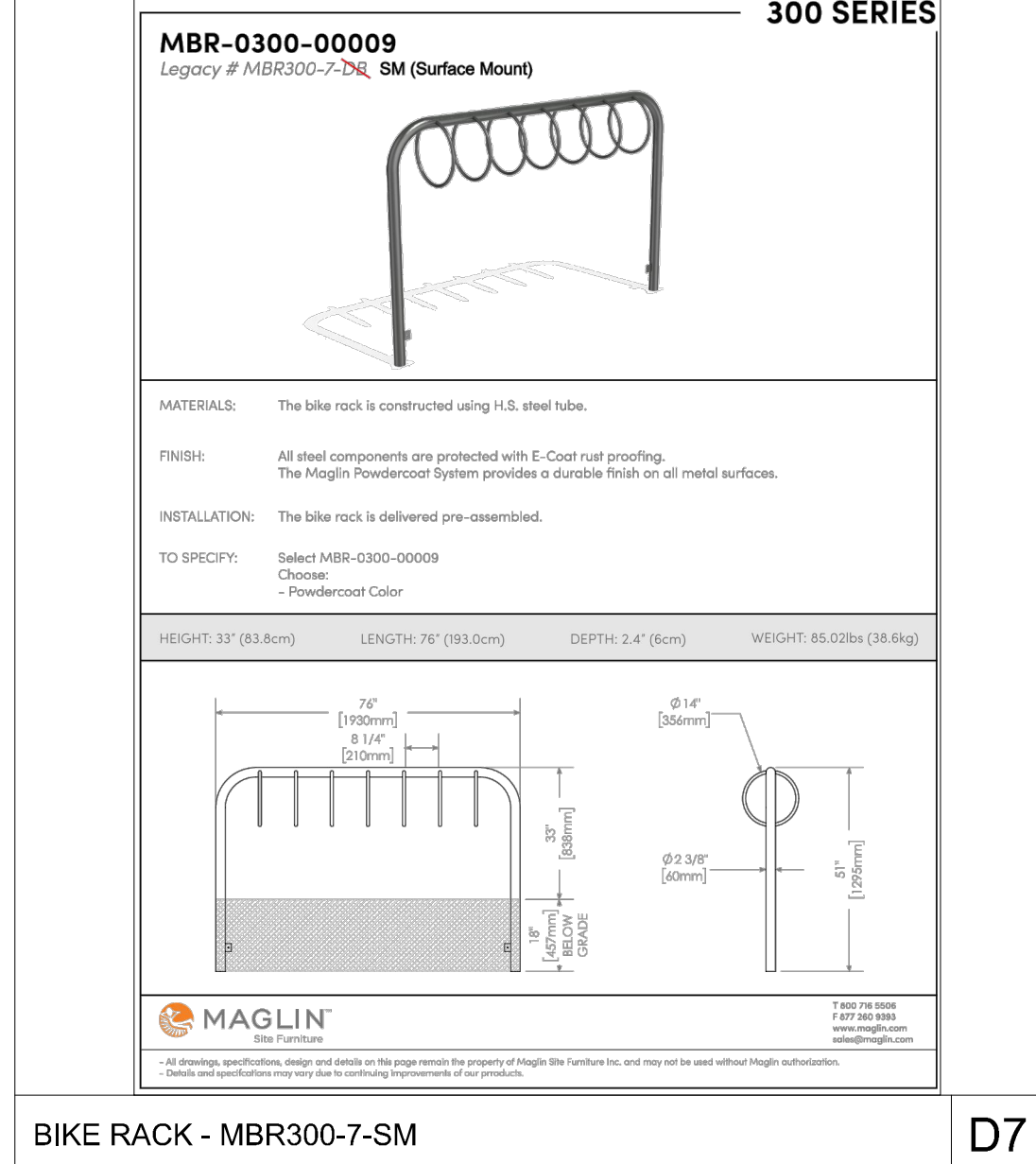
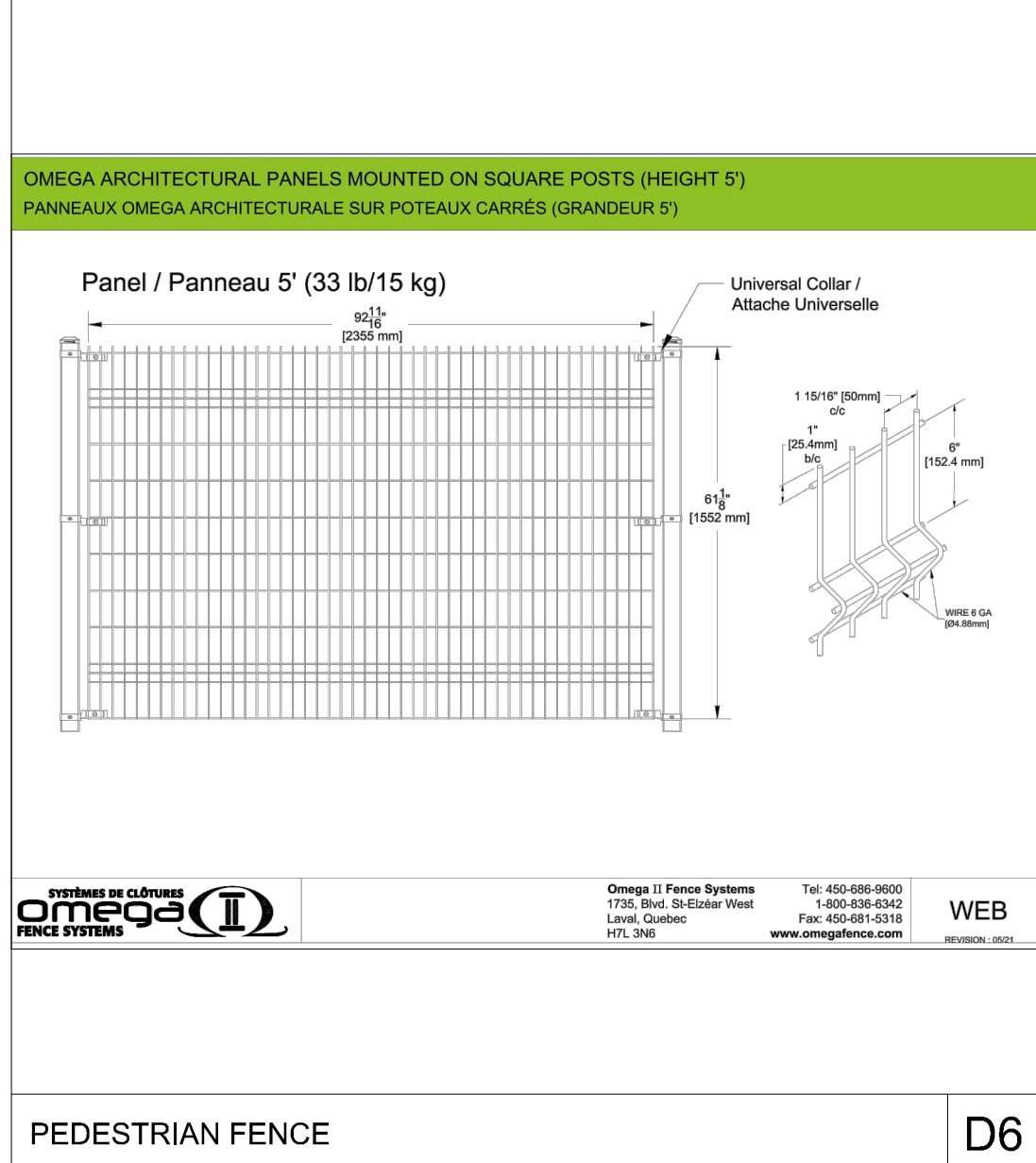
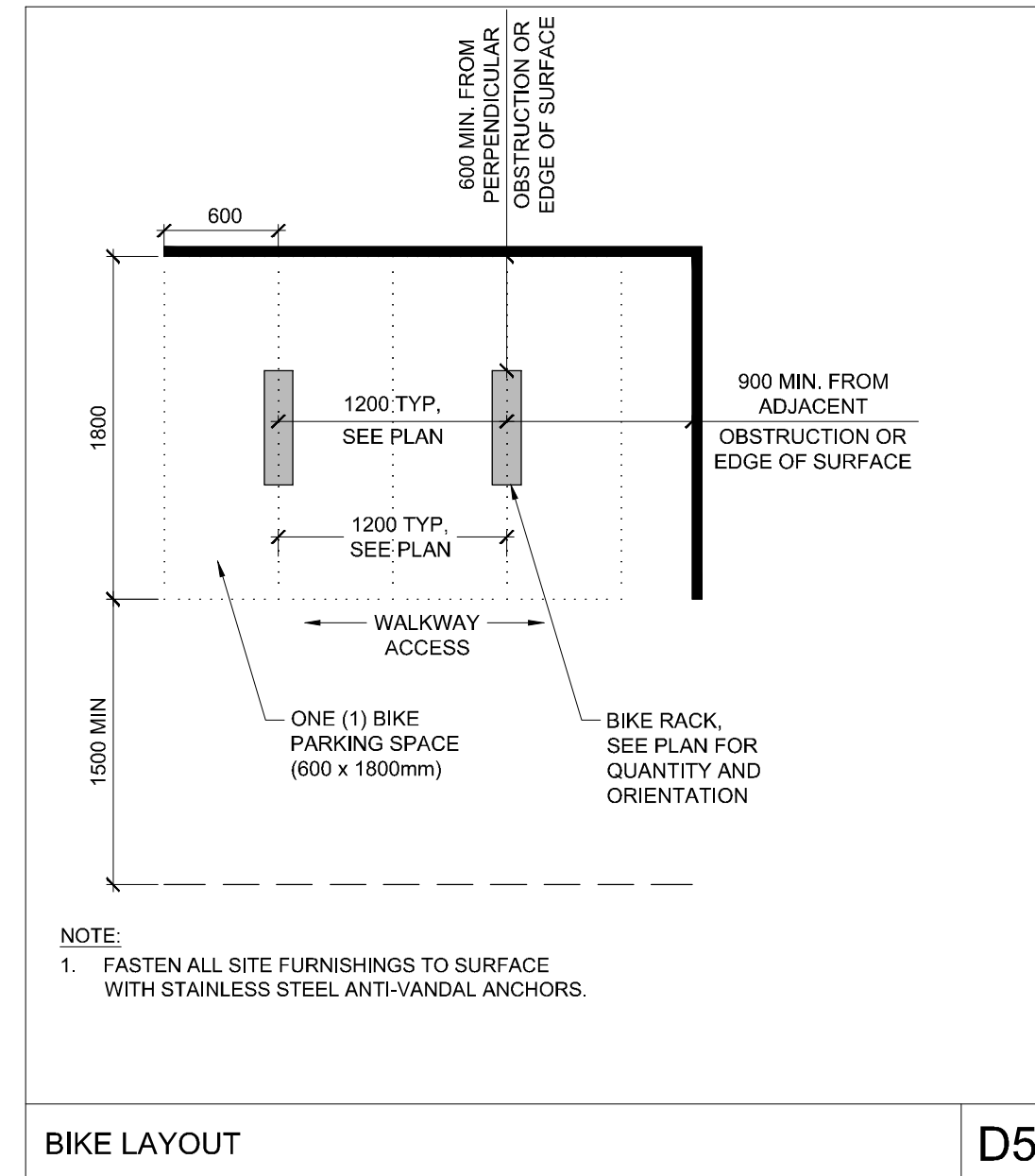
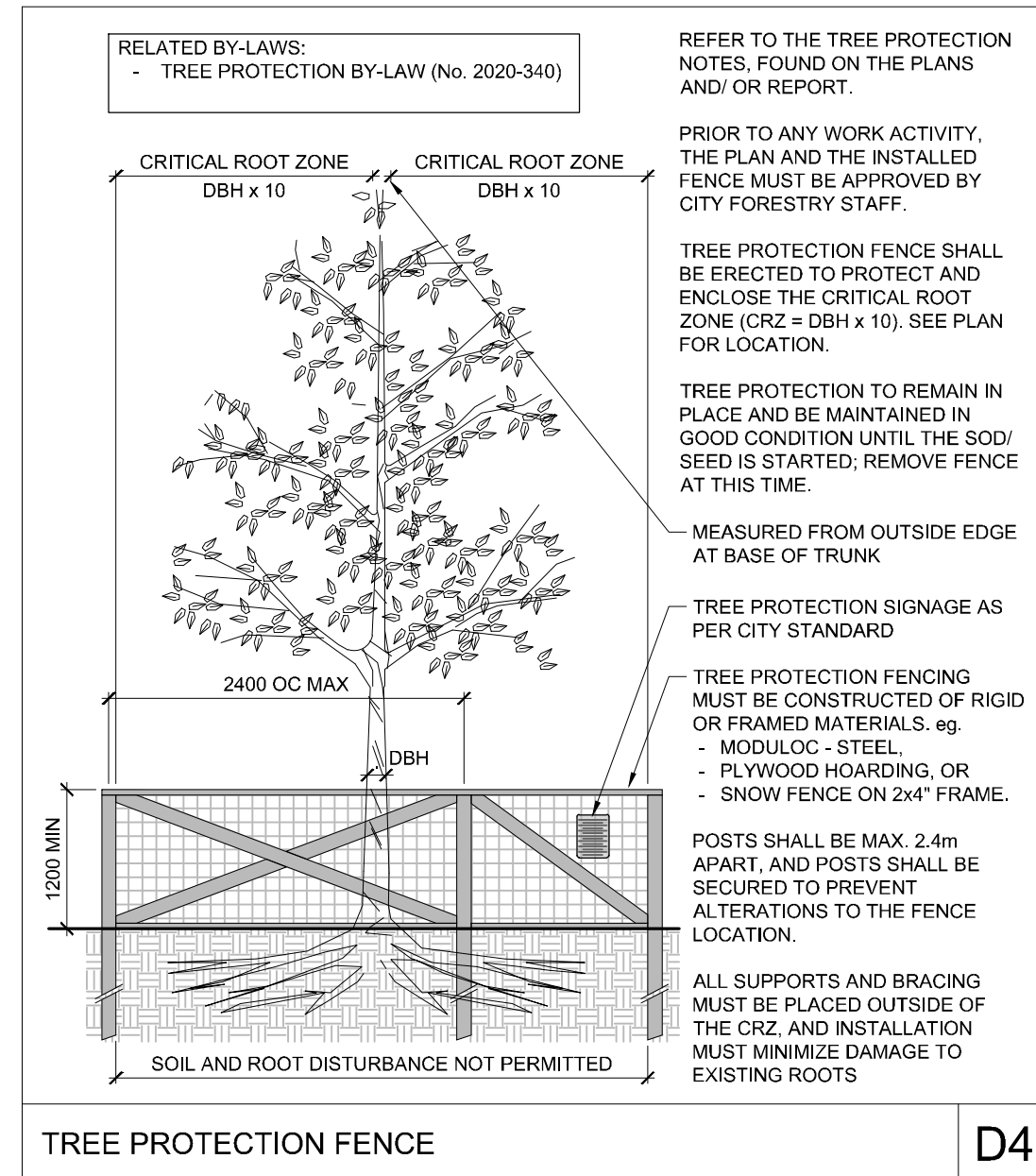
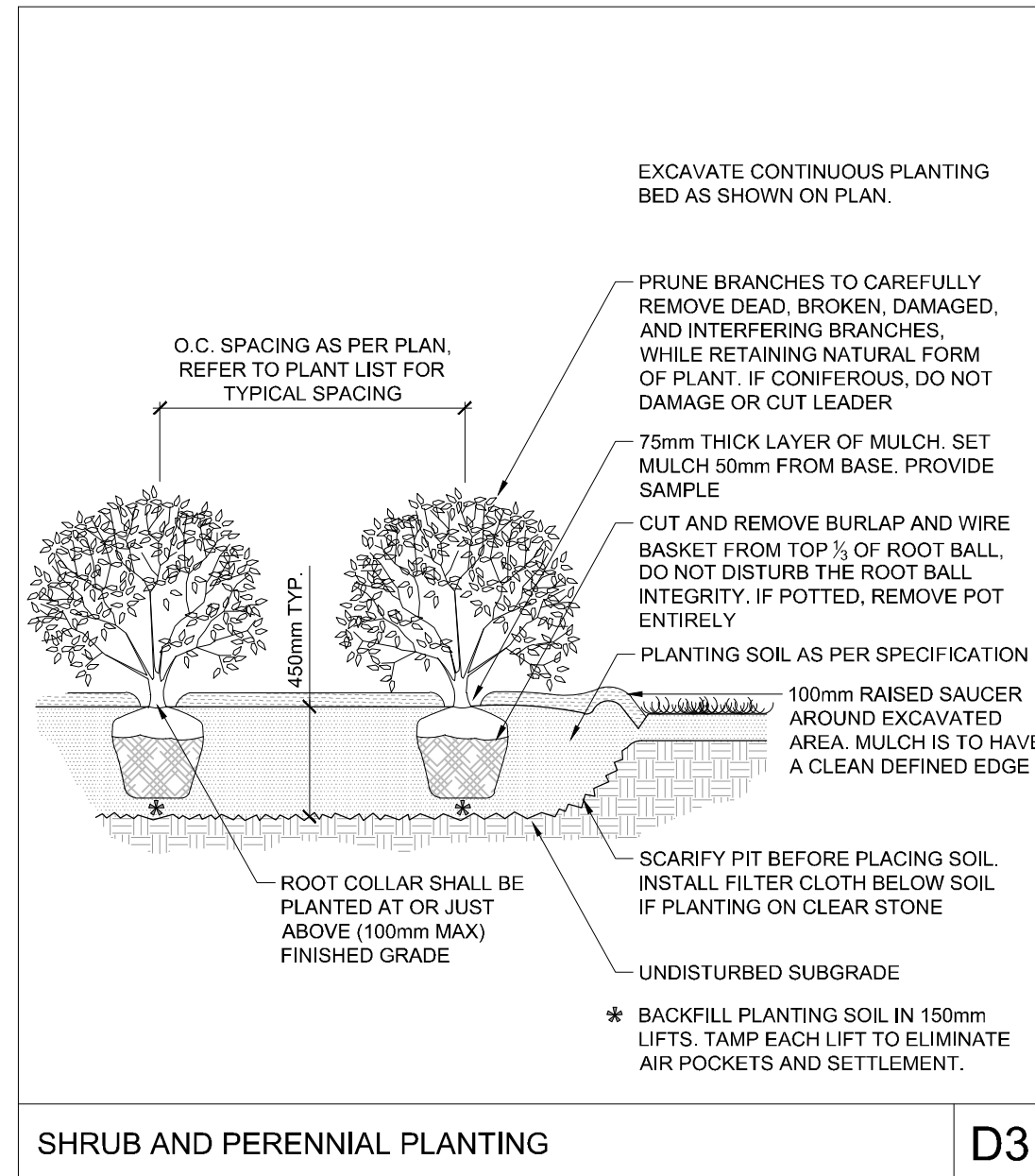
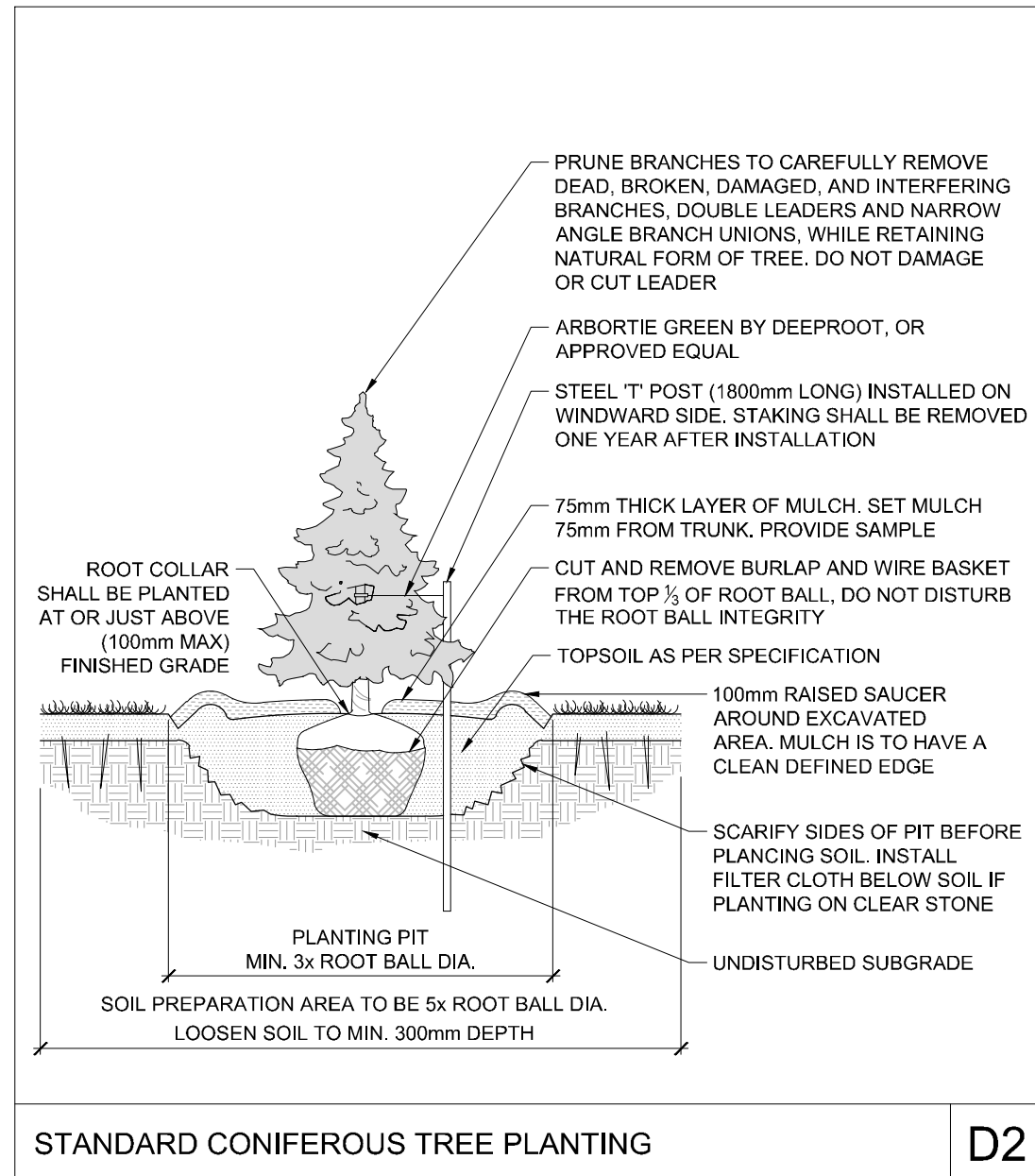
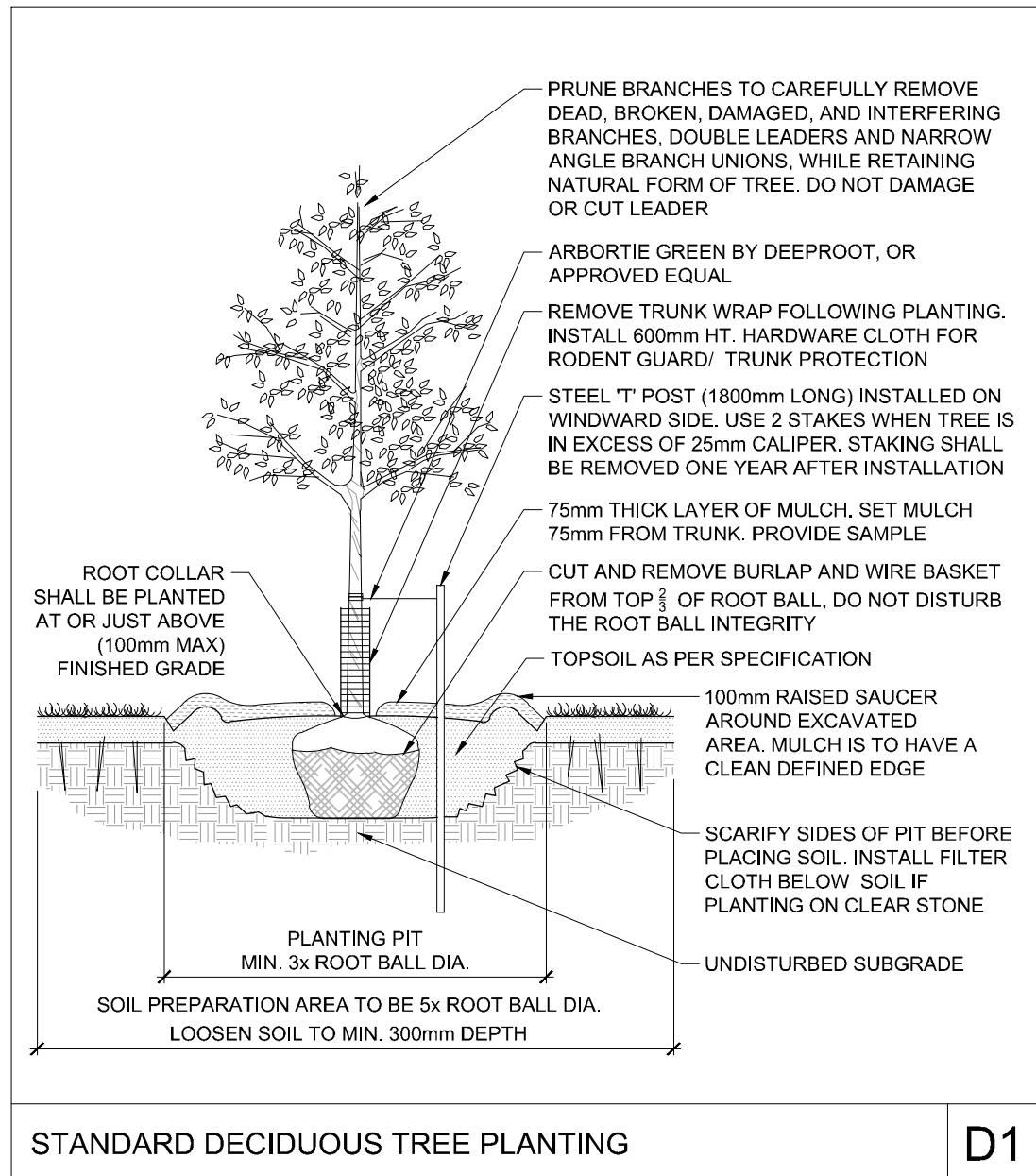
NOVATECH
Engineers, Planners & Landscape Architects
Suite 200, 240 Michael Cowpland Drive
Ottawa, Ontario, Canada K2M 1P6
Telephone: (613) 254-9643
Facsimile: (613) 254-5867
Website: www.novatech-eng.com

| | |
|--|------------------------|
| LOCATION CITY OF OTTAWA 99 BILL LEATHEM, 2 & 20 LEIKEN DRIVE | PROJECT NO.: 124123 |
| DRAWING NAME LANDSCAPE PLAN - ENTRANCE ENLARGEMENT | REV # 3 |
| | DRAWING NO.: 124123-L7 |

D07-12-24-0139


LILY XU, MCIP, RPP
MANAGER, DEVELOPMENT REVIEW SOUTH
PLANNING, DEVELOPMENT, AND BUILDING SERVICES
DEPARTMENT, CITY OF OTTAWA

APPROVED
 By Lily Xu at 2:52 pm, Jan 23, 2025



SEED MIX AND APPLICATION

For areas steeper than 3:1, Contractor to apply erosion control blanket. Erosion control blanket to be machine woven mats made from natural wood, coco or cotton fiber, or combination depending on manufacturer, with stitching between two photo-degradable natural organic fiber nettings. Submit products for approval by Consultant. OPSS 804 applies except as may be amended and extended herein.

- In addition to the specified seed mixes, all applications are to include a nurse crop as noted.
- NURSE CROP**
 - Annual Ryegrass
 - Seeding Rate: 25kg/hectare
 - CUSTOM LOW NATIVE SEED MIX BY DLF**
 - Seeding Rate: 25kg/hectare
 - GREENFIELDS SEED MIX BY DLF**
 - Seeding Rate: 17kg/hectare

SEED

OPSS 804 shall apply except as may be amended and extended herein.

DESIGN AND SUBMISSION REQUIREMENTS

When requested by the Contract Administrator, the Contractor shall submit a copy of invoice/receipt from seed supplier indicating dates, all seeds, quantity and lots acquired and all original seed package labels, to confirm shipping dates and total quantity of seed purchased and used on the project. The Contractor shall ensure all original seed labels are preserved and maintained until acceptance.

MATERIALS

Seed Mixes: Seed mixes shall be Certified Canada No. 1 Grade, selected from the current year supply and shall be as specified on the contract drawings.

CONSTRUCTION

General:
 The Contractor shall, together with any and all Subcontractors involved in the work of this section, examine all surfaces or conditions relating to the work, in order to determine the acceptability of such surfaces or conditions for the work of this section to commence. The Contractor is to verify that finished grades are correct and surface preparation has been completed.

Seeding operations are to be scheduled within the following seeding windows:

- Spring start-up to May 31st
- August 1st to September 30th

Work is not to be performed in adverse site conditions, including winds over 10km/h, ground covered with snow, ice, or standing water. Work is not to be performed on frozen soil or in temperatures which would inhibit seed germination, unless dormant seeding is approved by the Contract Administrator.

Topsail:
 Topsail is to be placed to a uniform compacted depth in seed and sod areas; 15mm below finished grade for sod areas and at finished grade for seed areas. Depths shall be as specified for the applicable item.

Fine grade and loosen topsoil prior to seed/sod operations. Eliminate rough and low spots to ensure positive drainage. A loose friable bed is to be prepared by means of cultivation and subsequent raking, harrowing or gilling. Topsoil is to be consolidated prior to placement of surface treatment, leaving the surface smooth, uniform, firm against deep foot printing, and with a fine, loose texture.

Nurse Crop:
 In addition to the specified seed mixes, all applications shall include a nurse crop in the form of Annual Ryegrass, or an approved equivalent. Application rate: 25kg/ha.

Maintenance:
 Seeded areas are to be maintained by the Contractor until acceptance.

Seeded areas shall be watered in sufficient quantities and at the frequency required to maintain optimum soil moisture level for germination and continued healthy growth of grass. Avoid washout of soil, and immediately repair and reseed any areas damaged due to washouts.

The Contractor is to control and eliminate damaging pests when they appear in newly seeded areas. Areas showing root growth failure, deterioration, bare or thin spots, or which have been damaged by any means or cause, including replacement operations, shall be reseeded. Over-seed areas which show inadequate or improper seed growth.

Acceptance:
 Acceptance will be given provided that:

- Seeded areas are properly, uniformly and well established.
- Seeded areas are free of bare and dead spots and relatively weed-free, containing no more than five (5) broadleaf weeds, twenty five (25) annual weeds, or weedy grasses per 100 square metres.
- Seeded areas show adequate and proper seed establishment three hundred sixty-five (365) consecutive calendar days following completion of the seeding operations.

A review for acceptance may be postponed if the acceptance conditions cannot be properly assessed at that time of year.

NOTE:
 THE POSITION OF ALL POLE LINES, CONDUITS, WATERMANS, SEWERS AND OTHER UNDERGROUND AND OVERGROUND UTILITIES AND STRUCTURES IS NOT NECESSARILY SHOWN ON THE CONTRACT DRAWINGS, AND WHERE SHOWN, THE ACCURACY OF THE POSITION OF SUCH UTILITIES AND STRUCTURES IS NOT GUARANTEED. BEFORE STARTING WORK, DETERMINE THE EXACT LOCATION OF ALL SUCH UTILITIES AND STRUCTURES AND ASSUME ALL LIABILITY FOR DAMAGE TO THEM.

NOT FOR
CONSTRUCTION

| No. | REVISION | DATE | BY |
|-----|----------------------------------|-----------|-----|
| 3 | REVISED PER CITY COMMENTS | DEC 11/24 | RGJ |
| 2 | ISSUED FOR RFP TENDER SET 60% | NOV 21/24 | RGJ |
| 1 | ISSUED FOR SITE PLAN APPLICATION | OCT 29/24 | RGJ |

| SCALE | | DESIGN | FOR REVIEW ONLY |
|-------|--|-----------------|-----------------|
| NTS | | CHECKED MJT | |
| NTS | | DRAWN RGJ | |
| | | CHECKED MJT | |
| | | DRAWN RGJ | |
| | | APPROVED RGJ | |

NOVATECH
 Engineers, Planners & Landscape Architects
 Suite 200, 240 Michael Cowpland Drive
 Ottawa, Ontario, Canada K2M 1P6
 Telephone: (613) 254-9643
 Facsimile: (613) 254-5867
 Website: www.novatech-eng.com

LOCATION
 CITY OF OTTAWA
 99 BILL LEATHERM, 2 & 20 LEIKEN DRIVE

DRAWING NAME
 LANDSCAPE DETAILS

PROJECT NO.: 124123
 REV # 3
 DRAWING NO.: 124123-DTL

C:\Users\mshah\Documents\mshah\124123-DTL.dwg, 1:8-DTL, Dec 17, 2024, 3:23pm, mshah

D07-12-24-0139

EXISTING TREE INVENTORY - GROUPS

| Key | Botanical Name | Common Name | DBH | Owner | Remarks | Recomm. |
|----------------|------------------------|-----------------------|-----------|--------|---|----------|
| GROUP A | | | | | | |
| A | Quercus macrocarpa | Bur oak | 19in | Client | In good condition and many regenerating stems are present | Conflict |
| A | Populus tremuloides | Trembling Aspen | 20in | Client | | Conflict |
| A | Fraxinus americana | White Ash | Client | Client | Most of the ash trees are in very poor condition due to several ash bore. | Conflict |
| A | Tilia americana | Basswood | Client | Client | | Conflict |
| A | Fraxinus pennsylvanica | Green Ash | Client | Client | | Conflict |
| A | Acacia saligna | Manitoba Maple | Client | Client | Volunteers | Conflict |
| A | Ulmus americana | White Elm | Client | Client | | Conflict |
| A | Salix | Willow | Client | Client | | Conflict |
| GROUP B | | | | | | |
| B | Fraxinus americana | White Ash | Client | Client | | Conflict |
| B | Ulmus americana | White Elm | 30in MAX. | Client | Very little leaf out | Conflict |
| B | Acacia saligna | Manitoba Maple | Client | Client | | Conflict |
| B | Fraxinus pennsylvanica | Green Ash | Client | Client | | Conflict |
| GROUP C | | | | | | |
| C | Quercus macrocarpa | Bur oak | Client | Client | Regenerating stems | Conflict |
| C | Tilia americana | Basswood | 20in MAX. | Client | | Conflict |
| C | Fraxinus pennsylvanica | Green ash | Client | Client | | Conflict |
| C | Acacia saligna | Red maple | Client | Client | A minor representation of volunteers | Conflict |
| C | Sorbus acerata | European mountain ash | Client | Client | | Conflict |

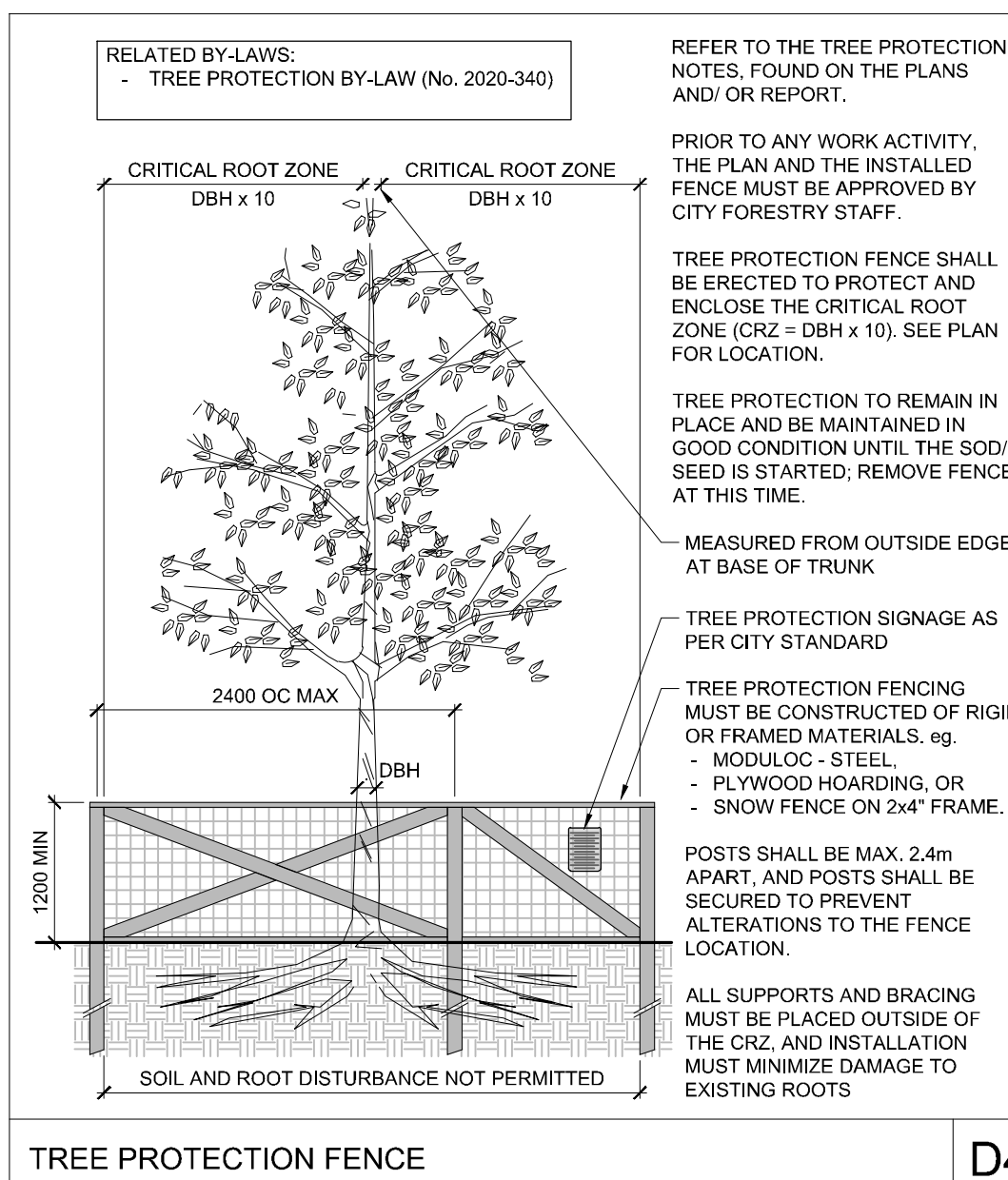
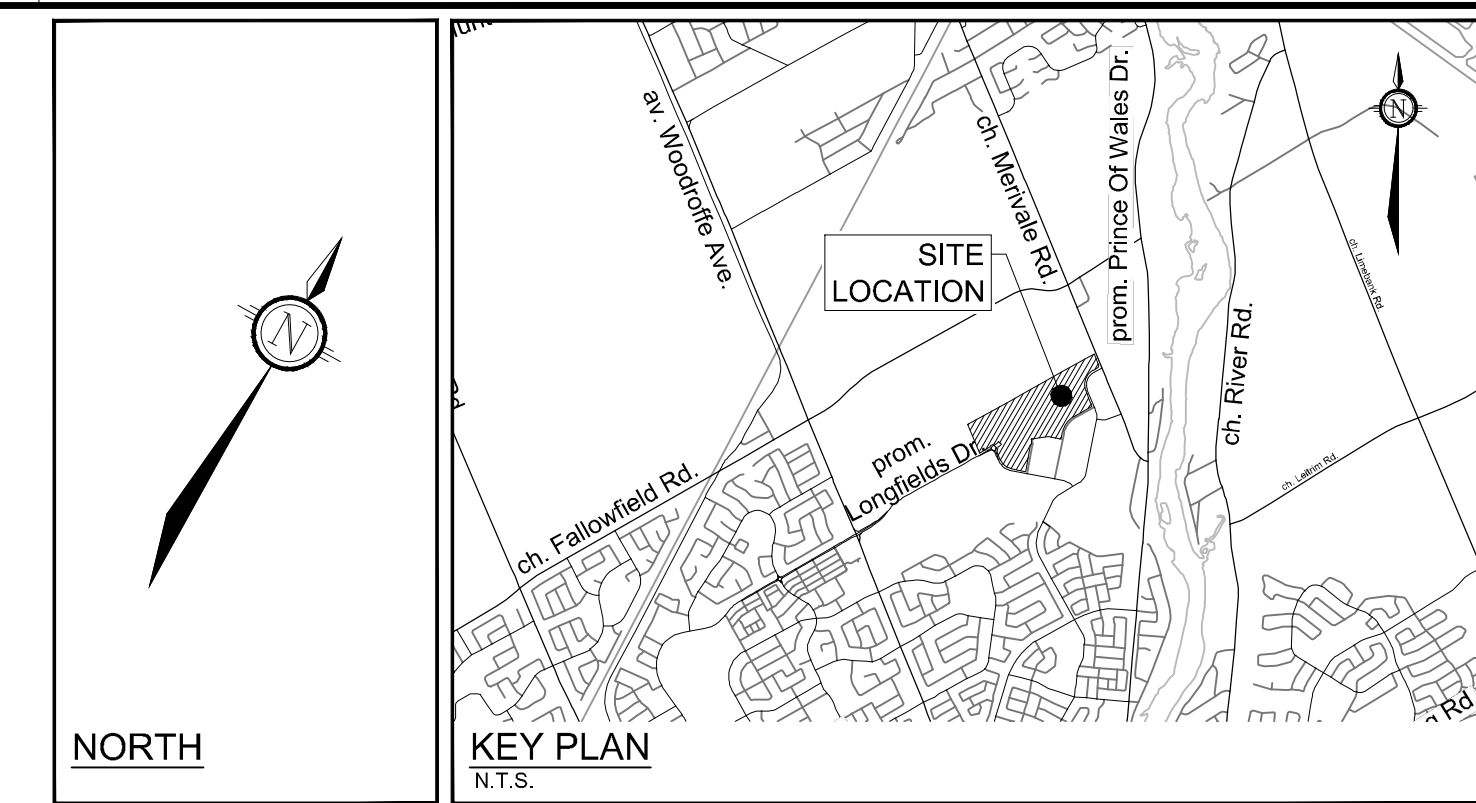
| Key | Botanical Name | Common Name | DBH | Owner | Remarks | Recomm. |
|----------------|---------------------|----------------------------------|-----------------------|----------|--|---------|
| GROUP D | | | | | | |
| D | Acacia saligna | Manitoba Maple | 25in MAX. | Client | Flour structure with several nearby horizontal trunks near the base of trees | PROTECT |
| D | Fraxinus americana | White Ash | Client | Client | Appears dead, cavities at the top of dead ash trunks | PROTECT |
| GROUP E | | | | | | |
| E | Populus tremuloides | Trembling Aspen | 44cm MAX. | Client | Dominant in small treed areas in the east portion | PROTECT |
| E | Ulmus americana | White elm | Client | Client | | PROTECT |
| E | Picea canadensis | White spruce | Client | Client | | PROTECT |
| E | Ulmus pumila | Siberian elm | 10 to 30in | Client | | PROTECT |
| E | Salix | Crack willow | Client | Client | | PROTECT |
| E | Acacia saligna | Manitoba Maple | Client | Client | | PROTECT |
| E | Salix | Slender willow and Bebb's willow | Client | Shrubs | | PROTECT |
| GROUP F | | | | | | |
| F | Quercus alba | Red oak | Along the Paragon ave | Neighbor | | PROTECT |
| F | Gleditsia | Honeylocust | Neighbor | Neighbor | | PROTECT |
| F | Picea canadensis | White spruce | Neighbor | Neighbor | | PROTECT |
| F | Thuja occidentalis | White cedar | Neighbor | Neighbor | | PROTECT |
| F | Fraxinus americana | Trembling aspen | Neighbor | Neighbor | Regenerating stems | PROTECT |

TREE PROTECTION

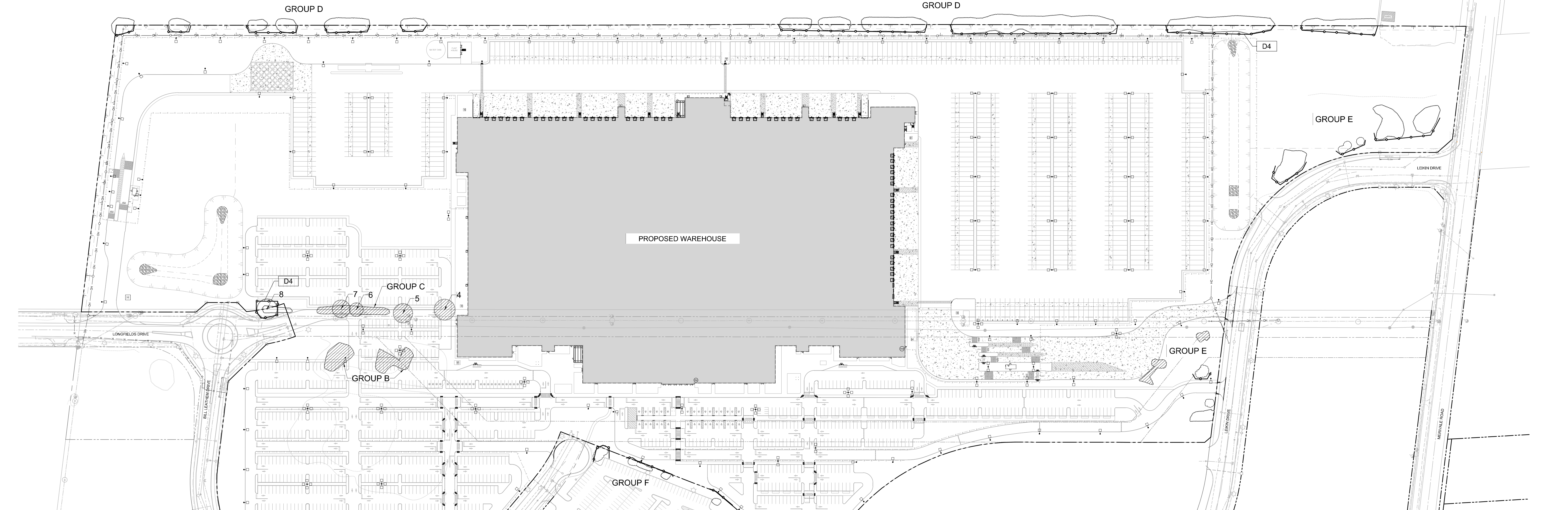
- Implement the following protection measures for retained trees, both on site and on adjacent sites, prior to any work activity, including tree removal. Maintain tree protection fence in place and in good condition for the duration of site works:
- The Landscape Architect or Certified Arborist is to determine the location of the tree protection fencing and detail it on any associated plans for the site (e.g. tree conservation report, tree disclosure report, etc.).
 - Under the guidance of a Landscape Architect or Certified Arborist, erect a fence at the critical root zone (CRZ) of trees. Diameter at breast height (DBH) is the trunk diameter measured at 1.3m height on the tree trunk. The CRZ is calculated as DBH x 10. Refer to the Tree Protection Fence detail.
 - Refer to the Tree Protection Plan for fence location. City Forestry Staff are to approve both the plan and the installed fence prior to work commencement.
 - Do not place any material or equipment within 2m of the CRZ of any tree, including outhouses.
 - Do not attach any signs, notices, or posters to any tree.
 - Do not disturb, raise, or lower the existing grade within the CRZ without approval.
 - Only tunnel or bore when digging within the CRZ of a tree. Hand work only where required within the CRZ, absolutely no machinery permitted.
 - Do not damage the root system, trunk, or branches, or any tree.
 - Do not extend hard surface or significantly change landscaping.
 - Ensure that exhaust fumes from all equipment are directed away from any tree canopy.
 - When trees marked for removal overlap with the CRZ of trees marked for preservation, cut roots at the edge of the CRZ and grid down stumps after tree removals, do not pull out stumps. Ensure there is not root pulling or disturbance of the ground within the CRZ.
 - Prior to work taking place, notify and consult the Landscape Architect and City Forestry Staff if roots must be cut. Roots 20mm or larger should be cut at right angles with clean, sharp horticultural tools without tearing, crushing, or pulling. Refer to City of Ottawa Specification S.P. F-8011 Tree Protection, Excavation of Root Zone.
 - If damaged or objectionable branches are observed, consult the Landscape Architect, before any work is conducted. Do not prune more than 1/4 of crown.
 - Set up a water and fertilizing program, if trees are being affected by site works, to the satisfaction of the Landscape Architect.
 - The Landscape Architect is to prescribe mitigation measures if the protected fenced area must be reduced to facilitate construction. Measures may include the placement of plywood, wood chips, or steel plating over the roots for protection. City Forestry Staff are to approve said measures prior to fence movement.
 - City of Ottawa By-law: Protects municipal trees and municipal natural areas in the City of Ottawa and trees on private property in the urban area of the City of Ottawa (2020-340).

LEGEND

- 3-D1 DETAIL SHEET # - NOVATECH OR CITY FOR CODE
EG. L1, L2, ETC.
- PROPERTY LIMIT
 - EXISTING TREE TO REMAIN, SYMBOL SIZE REFLECTS CRZ
 - EXISTING TREE TO REMOVE, SYMBOL SIZE REFLECTS CRZ
 - EXISTING TREE GROUP TO BE RETAINED
 - EXISTING TREE GROUP TO BE REMOVED
 - TREE PROTECTION FENCE



D4



EXISTING TREE INVENTORY - SINGLES

| No. | Botanical Name | Common Name | DBH (cm) | CRZ (m) | Condition | Owner | Remarks | Recomm. |
|-----|--------------------|-------------|----------|---------|-----------|--------|--|----------|
| 1 | Quercus macrocarpa | Bur oak | 58.0 | 5.80 | G | Client | Appears to be in good condition with healthy trunk and strong lateral branching | PROTECT |
| 2 | Quercus macrocarpa | Bur oak | 43.0 | 4.30 | F | Client | Twin stems in apparently good condition with good leaf-out, good lateral branching and healthy trunks | PROTECT |
| 3 | Fraxinus Americana | White ash | 44.0 | 4.40 | Dead | Client | Tree appears dead with no obvious leaf-out | Remove |
| 4 | Quercus macrocarpa | Bur oak | 80.0 | 8.00 | VP | Client | Asymmetrical as right main trunk has decayed and fallen to ground. Significant lower trunk and root flare decay indicates poor longer-term condition, though leaf-out remains good | Remove |
| 5 | Quercus macrocarpa | Bur oak | 74.0 | 7.40 | F | Client | Two major trunks with no dominant leader. Some smaller lateral branches are dead but otherwise leaf-out is good | Conflict |
| 6 | Quercus macrocarpa | Bur oak | 52.0 | 5.20 | G | Client | Few lateral branches but leaf-out is generally good | Conflict |
| 7 | Quercus macrocarpa | Bur oak | 68.0 | 6.80 | G | Client | Good lateral branching and other form leaf-out is good | Conflict |
| 8 | Quercus macrocarpa | Bur oak | 77.0 | 7.70 | G | City | Good lateral branching and other form leaf-out is good | PROTECT |

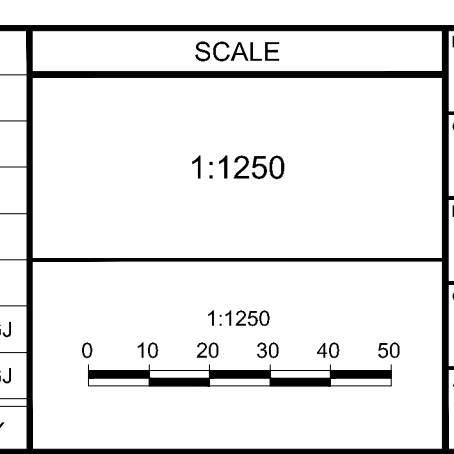
| Legend | Remove | Remove due to tree health or invasive status |
|--------------|----------|---|
| G Good | PROTECT | Protect trees as per contract details and specifications. |
| F Fair | Conflict | Remove due to conflict with the design |
| P Poor | | |
| VP Very Poor | | |

APPROVED
By Lily Xu at 2:52 pm, Jan 23, 2025

LILY XU, MCIP, RPP
MANAGER, DEVELOPMENT REVIEW SOUTH
PLANNING, DEVELOPMENT, AND BUILDING SERVICES
DEPARTMENT, CITY OF OTTAWA

NOT FOR CONSTRUCTION

| No. | REVISION | DATE | BY |
|-----|----------------------------------|-----------|-----|
| 2 | REVISED PER CITY COMMENTS | DEC 11/24 | RGJ |
| 1 | ISSUED FOR SITE PLAN APPLICATION | OCT 29/24 | RGJ |



| DESIGN | MJT | FOR REVIEW ONLY |
|----------|-----|-----------------|
| CHECKED | RGJ | |
| DRAWN | TCB | |
| CHECKED | RGJ | |
| APPROVED | RGJ | |



| LOCATION | CITY OF OTTAWA | 99 BILL LEATHAM, 2 & 20 LEIKEN DRIVE |
|--------------|--|--------------------------------------|
| DRAWING NAME | TREE CONSERVATION REPORT EXISTING CONDITIONS | |
| PROJECT NO. | 124123 | |
| REV | REV # 2 | |
| DRAWING NO. | 124123-TCR1 | |

NOVATECH 124123-TCR1.dwg, 12/23/2024, 1:12:50 PM, 3:50pm, mjt

D07-12-24-0139