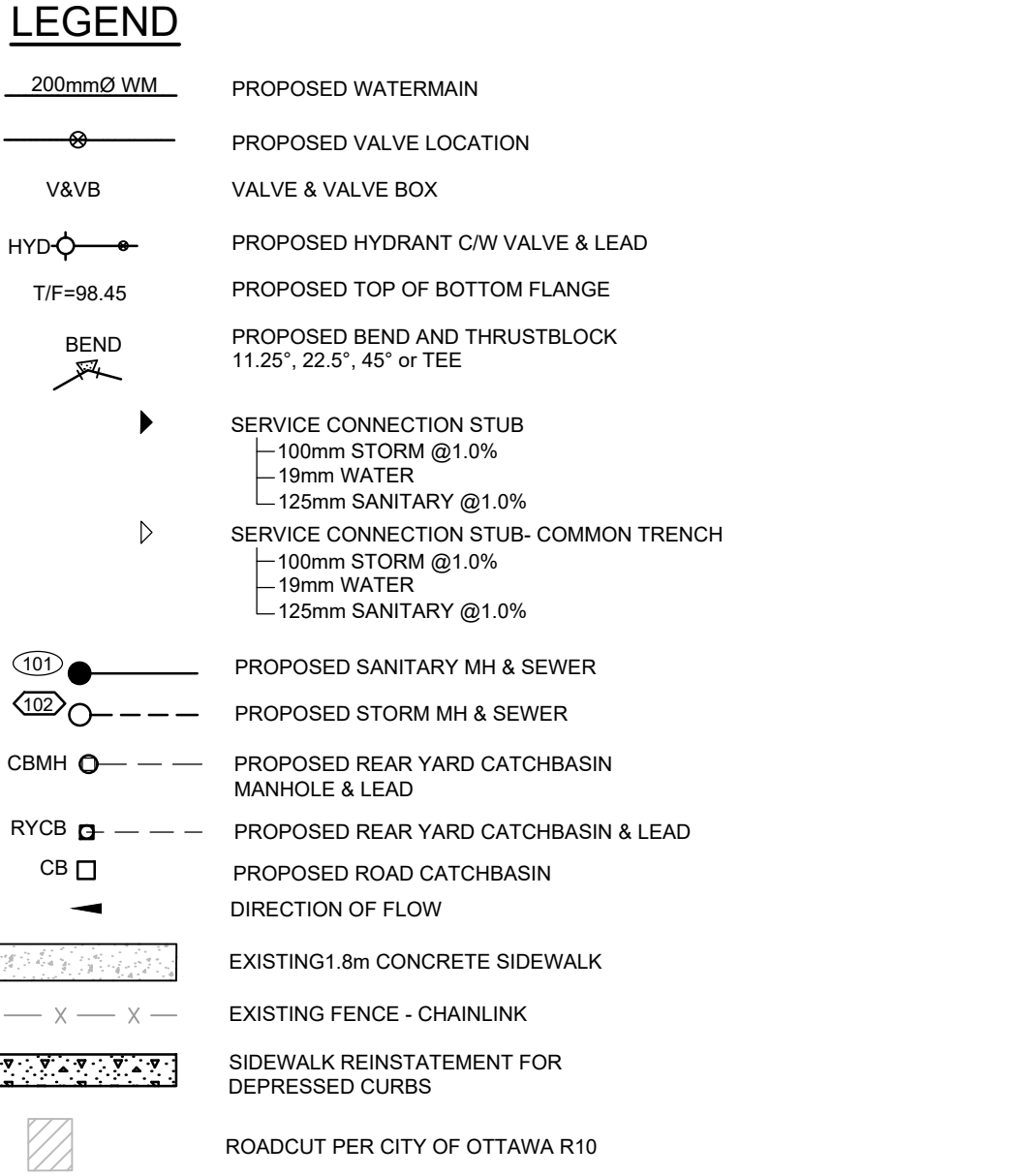
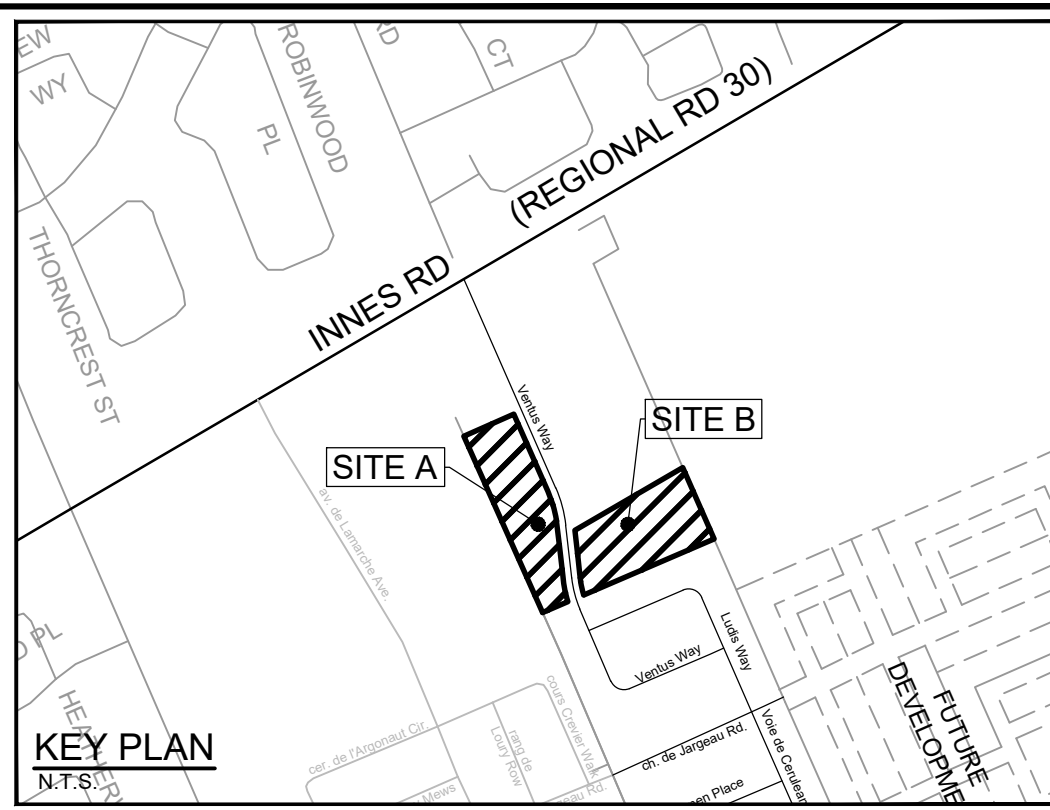
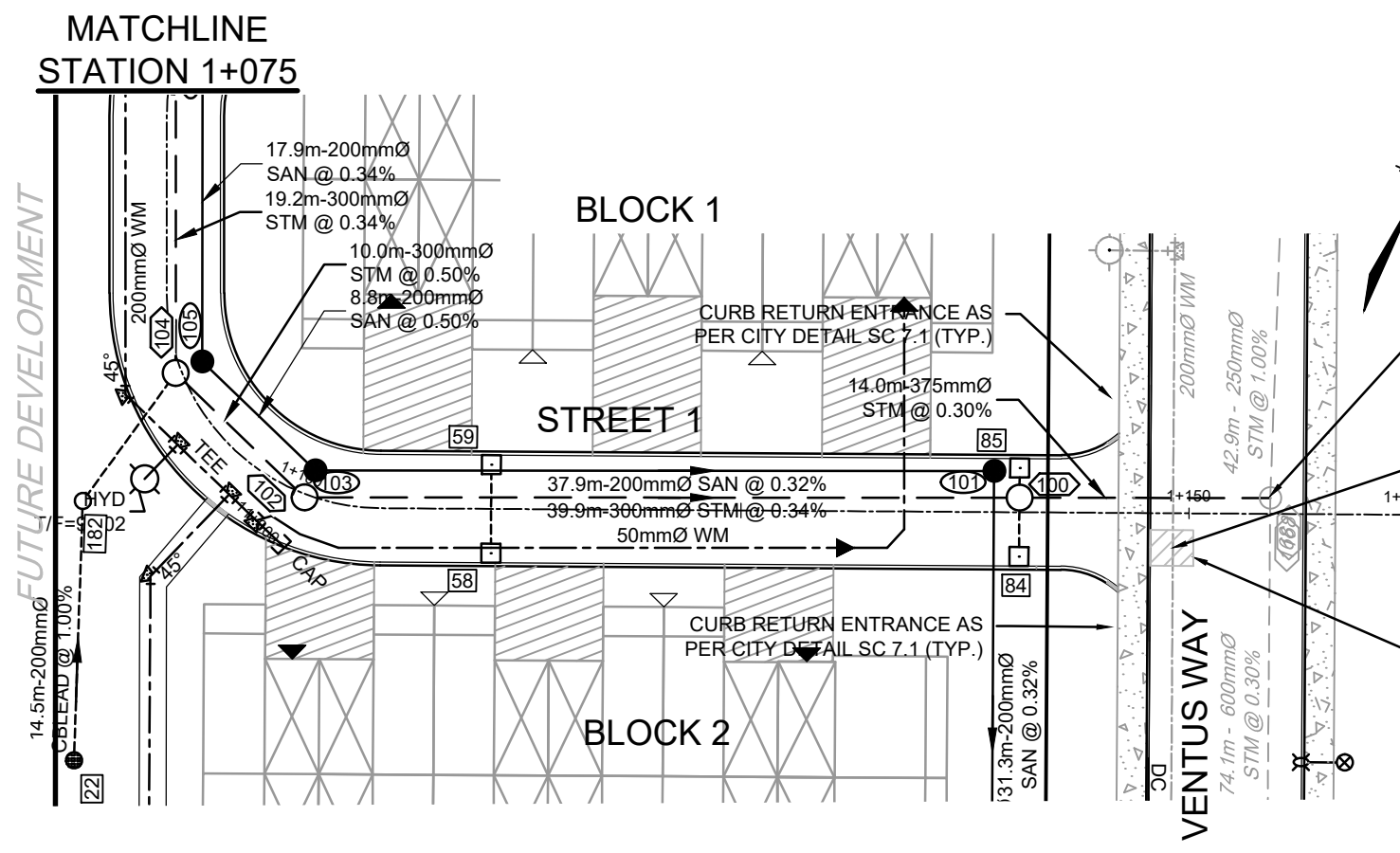
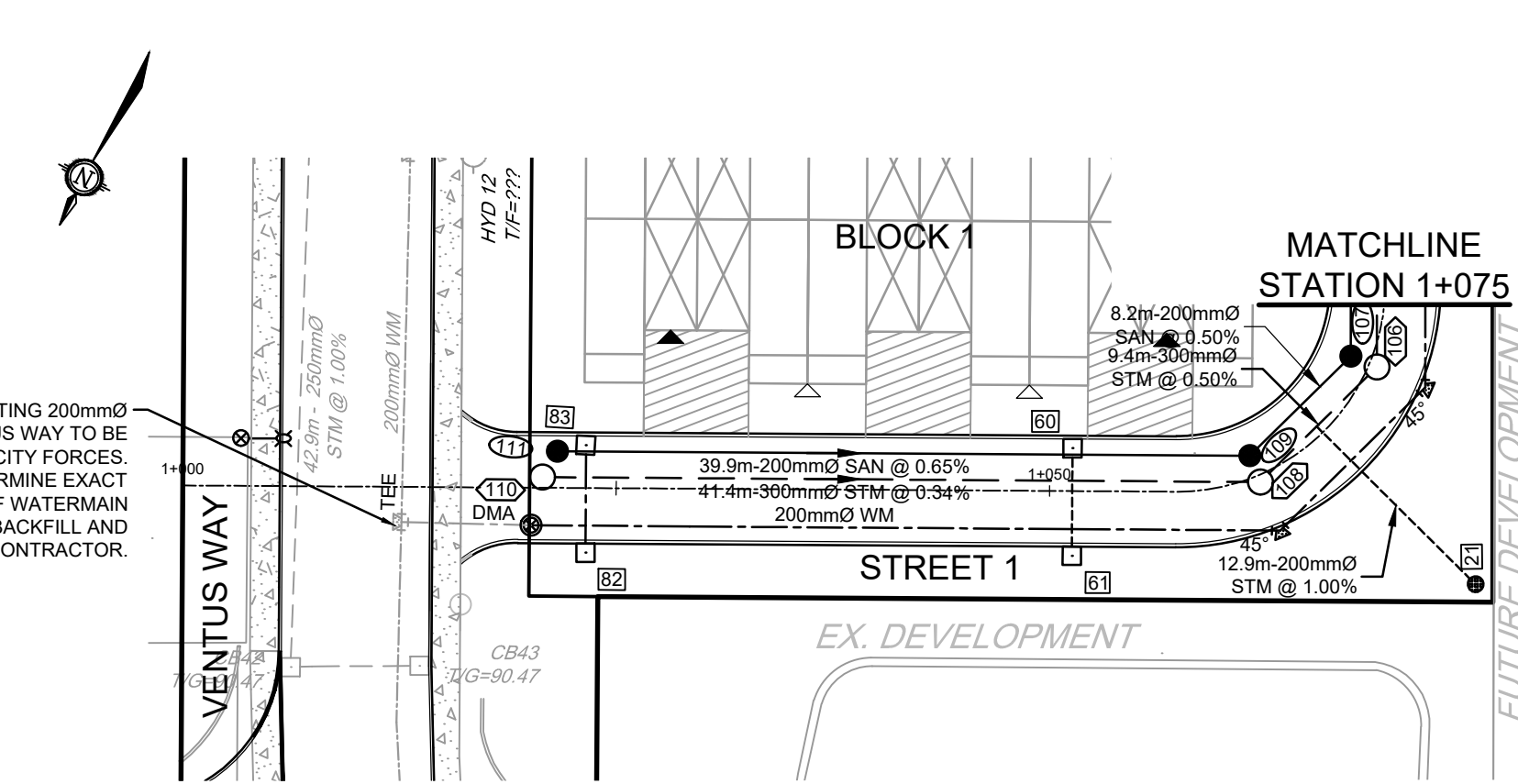
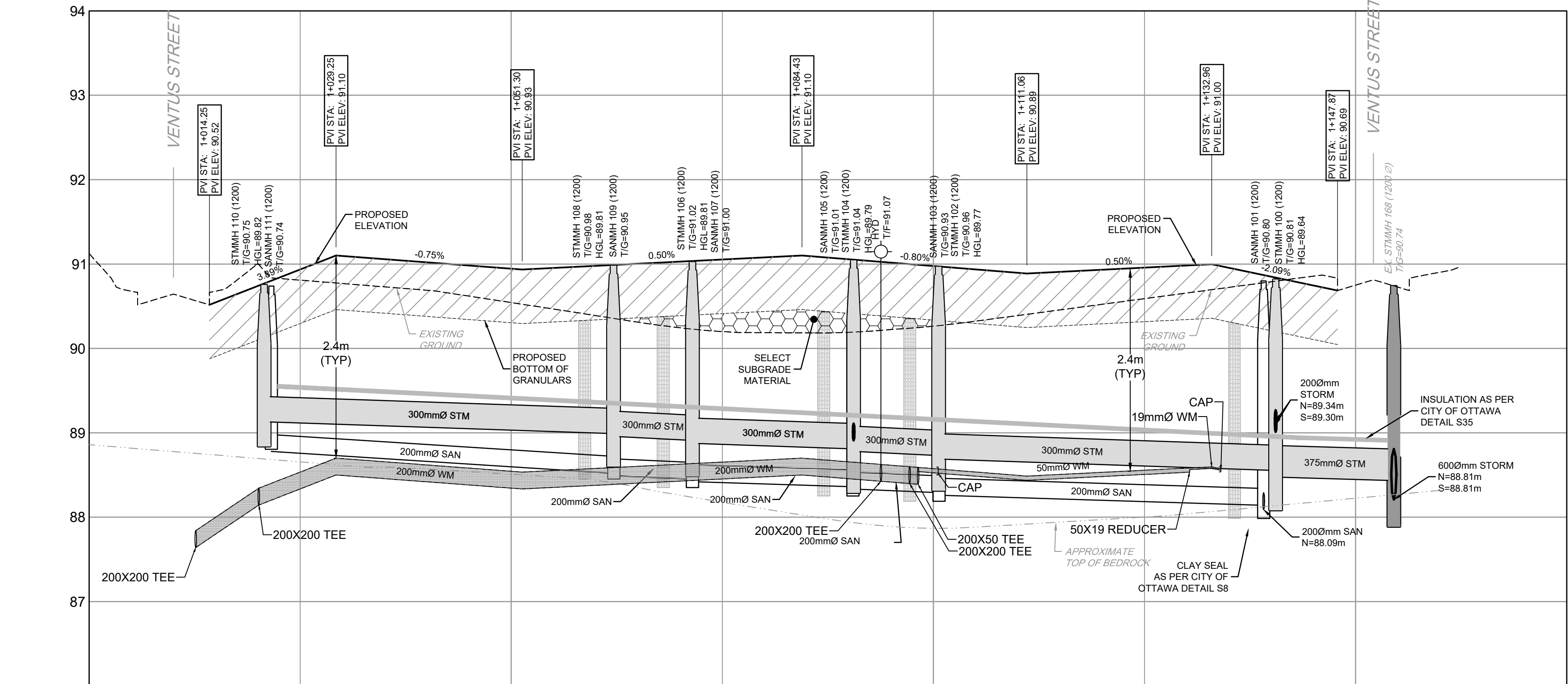


M:\2018\118224\CAD\Design\Medium\118224-PR-4D.dwg, PR1, Aug 15, 2025 - 12:31am, bundle

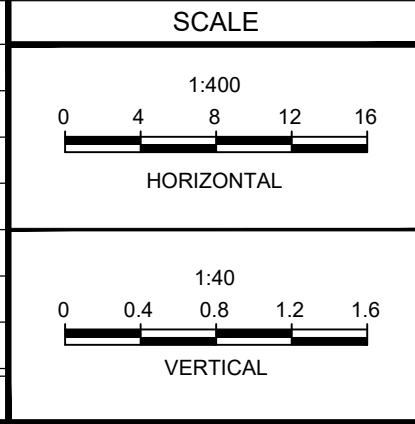
NOTE:
THE POSITION OF ALL POLE LINES, CONDUITS,
WATERMANS, SEWERS AND OTHER
UNDERGROUND AND OVERGROUND UTILITIES AND
STRUCTURES IS NOT NECESSARILY SHOWN ON
THE CONTRACT DRAWINGS, AND WHERE SHOWN,
THE ACCURACY OF THE POSITION OF SUCH
UTILITIES AND STRUCTURES IS NOT GUARANTEED.
BEFORE STARTING WORK, DETERMINE THE EXACT
LOCATION OF ALL SUCH UTILITIES AND
STRUCTURES AND ASSUME ALL LIABILITY FOR
DAMAGE TO THEM.

PROPOSED ELEVATION	90.52	90.93	91.10	90.94	90.93	90.99	90.84	90.85	91.05	91.10	90.86	91.00	90.89	90.86	90.85	90.87	90.75
TOP OF WM	87.84	88.34	88.53	88.70	88.54	88.53	88.59	88.64	88.65	88.70	88.65	88.63	88.60	88.59	88.57	88.49	88.56
STORM SEWER INVERTS		SW=89.13 SE=88.78			41.4m - 300mmØ STM @ 0.34%	SW=89.09 SE=88.69	8.4m - 300mmØ STM @ 0.50%	SW=88.51 SE=88.01	19.2m - 300mmØ STM @ 0.34%	SW=88.78 SE=88.31	10.0m - 300mmØ STM @ 0.50%	SW=89.01 SE=88.55	39.9m - 300mmØ STM @ 0.34%	SW=89.07 SE=88.55	14.0m - 375mmØ STM @ 0.30%	SW=88.43 SE=88.21	
SANITARY SEWER INVERTS		SW=88.78			39.9m - 200mmØ SAN @ 0.65%	SW=88.52 SE=88.08	8.2m - 200mmØ SAN @ 0.50%	SW=88.45 SE=88.42	17.9m - 200mmØ SAN @ 0.34%	SW=88.36 SE=88.33	8.8m - 200mmØ SAN @ 0.50%	SW=88.29 SE=88.26	37.9m - 200mmØ SAN @ 0.32%	SW=88.09 SE=88.07			
EXISTING ELEVATION	90.42		90.81		90.54			90.20									
CHAINAGE	1+000	1+012.62 TEE	1+020.09 DWA	1+025	1+050	1+062.12 STM MH 108	1+062.11 HEND	1+071.41 STM MH 109	1+075	1+090.55 STM MH 104	1+090.63 HEND	1+093.78 TEE HYD	1+097.18 TEE	1+100.57 CAP	1+100.62 STM MH 102	1+100.66 STM MH 103	1+125



NOTE:
DURING SERVICING, GRADING, AND REINSTATEMENT WORKS, TIE INTO EXISTING
ELEVATIONS AND ELIMINATE ENCROACHMENT INTO ADJACENT PROPERTY LANDS, WHERE
POSSIBLE. PERMISSION REQUIRED FOR WORKS ON ADJACENT PROPERTY LANDS. USE
PROTECTION FENCING AND BEST EFFORTS TO REDUCE IMPACT TO ADJACENT LANDS.
EXISTING FEATURES INCLUDING, BUT NOT LIMITED TO, RETAINING WALLS, FENCES, HARD
AND SOFT LANDSCAPE. ANY DISTURBED AREA IS TO BE REINSTATED TO EXISTING
CONDITIONS OR BETTER, TO THE SATISFACTION OF PROPERTY OWNER AND CITY.

No.	REVISION	DATE	BY
3.	REVISED PER CITY COMMENTS	AUG 15/25	MS
2.	REVISED PER CITY COMMENTS	MAR 5/25	MS
1.	ISSUED FOR DISCUSSION	NOV 1/24	BHB



DESIGN	BR
CHECKED	MS
DRAWN	BR
CHECKED	MS
APPROVED	BHB

FOR REVIEW ONLY

PROFESSIONAL ENGINEER
B. P. RUNDLE
100527529
Aug 15, 2025
PROVINCE OF ONTARIO

NOVATECH
Engineers, Planners & Landscape Architects
Suite 200, 240 Michael Cowpland Drive
Ottawa, Ontario, Canada K2M 1P6
Telephone (613) 254-9643
Facsimile (613) 254-5867
Website novatech-eng.com

LOCATION CITY OF OTTAWA THE COMMONS - PHASE 4	PROJECT No. 118224-MD
DRAWING NAME PLAN AND PROFILE STREET 1 STATION 1+000 TO 1+175	REV REV # 3
	DRAWING No. 118224-MD-PR1

D07-12-24-0141