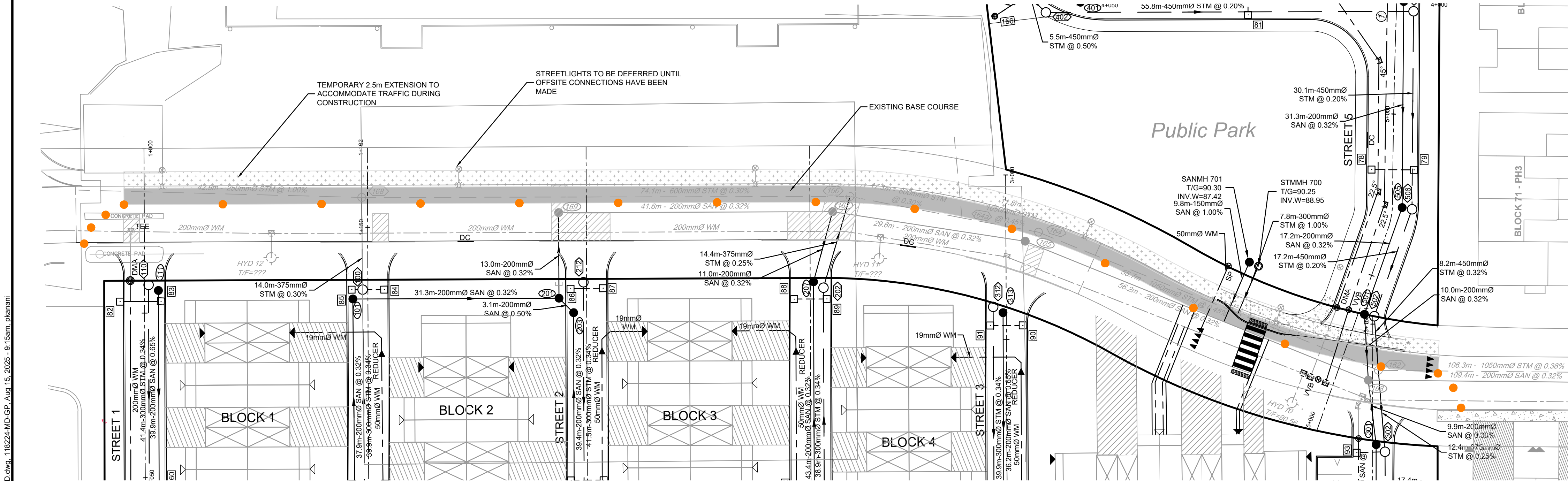
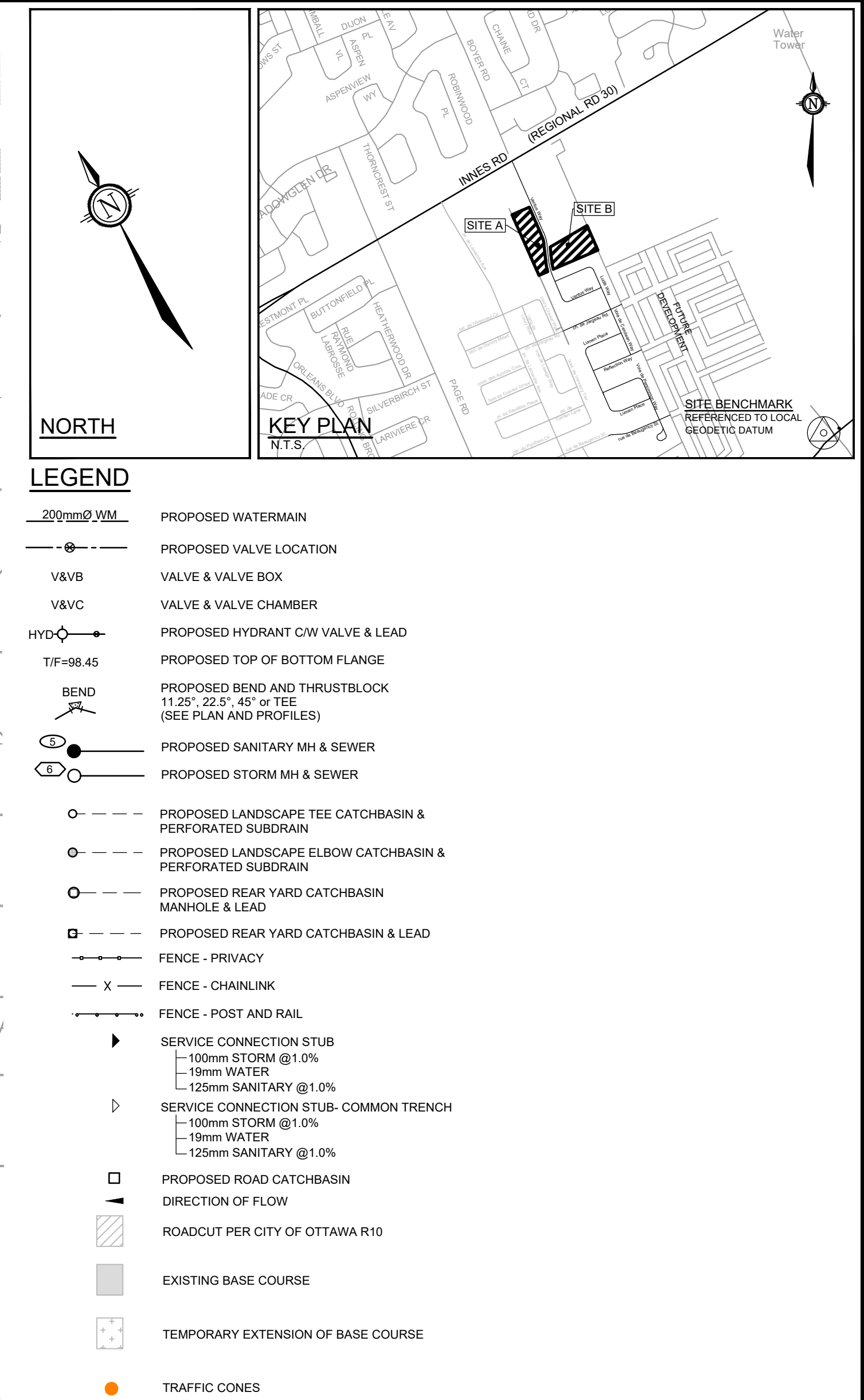


OPTION 1: TEMPORARY VEHICULAR TRAFFIC THROUGH LAMARCHE AVANEUE
1:1000



OPTION 2: TEMPORARY TRAFFIC DIVERSION ON VENTUS WAY



PRELIMINARY CONSTRUCTION MANAGEMENT CHECKLIST	
WILL CONSTRUCTION REQUIRE THE DETOUR OF A BUS ROUTE?	NO
WILL THIS WORK BLOCK A BIKE LANE?	NO
WILL THIS WORK BLOCK A SIDEWALK?	NO
WILL THIS WORK REQUIRE A TRAFFIC LANE TO BE CLOSED?	YES

CMP NOTES:

- TRAFFIC CONTROL PLAN WILL BE PREPARED FOR THIS SITE PRIOR TO COMMENCEMENT OF CONSTRUCTION AND ALL NECESSARY ENCROACHMENTS WILL BE COORDINATED WITH THE CITY OF OTTAWA.

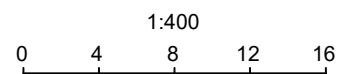
NOTE:
THE POSITION OF ALL POLE LINES, CONDUITS, WATERMAINS, SEWERS AND OTHER UNDERGROUND AND OVERGROUND UTILITIES AND STRUCTURES IS NOT NECESSARILY SHOWN ON THE CONTRACT DRAWINGS, AND WHERE SHOWN, THE ACCURACY OF THE POSITION OF SUCH UTILITIES AND STRUCTURES IS NOT GUARANTEED. BEFORE STARTING WORK, DETERMINE THE EXACT LOCATION OF ALL SUCH UTILITIES AND STRUCTURES AND ASSUME ALL LIABILITY FOR DAMAGE TO THEM.

PRELIMINARY

No.	REVISION	DATE	BY
2.	REVISED PER CITY COMMENTS	AUG 15/25	BR
1.	ISSUED FOR CITY REVIEW	NOV 1/24	MS

SCALE

1:400



DESIGN

CV/MS

CHECKED

MS

DRAWN

CV

CHECKED

MS

APPROVED

BHB

FOR REVIEW ONLY



NOVATECH

Engineers, Planners & Landscape Architects
Suite 200, 240 Michael Cowpland Drive
Ottawa, Ontario, Canada K2M 1P6

Telephone (613) 254-9643
Facsimile (613) 254-5867
Website www.novatech-eng.com

LOCATION
CITY OF OTTAWA
THE COMMONS - PHASE 4

DRAWING NAME
**CONSTRUCTION MANAGEMENT
PLAN**

PROJECT No.

118224-MD

REV

REV # 2

DRAWING No.

18224-CMP-MD