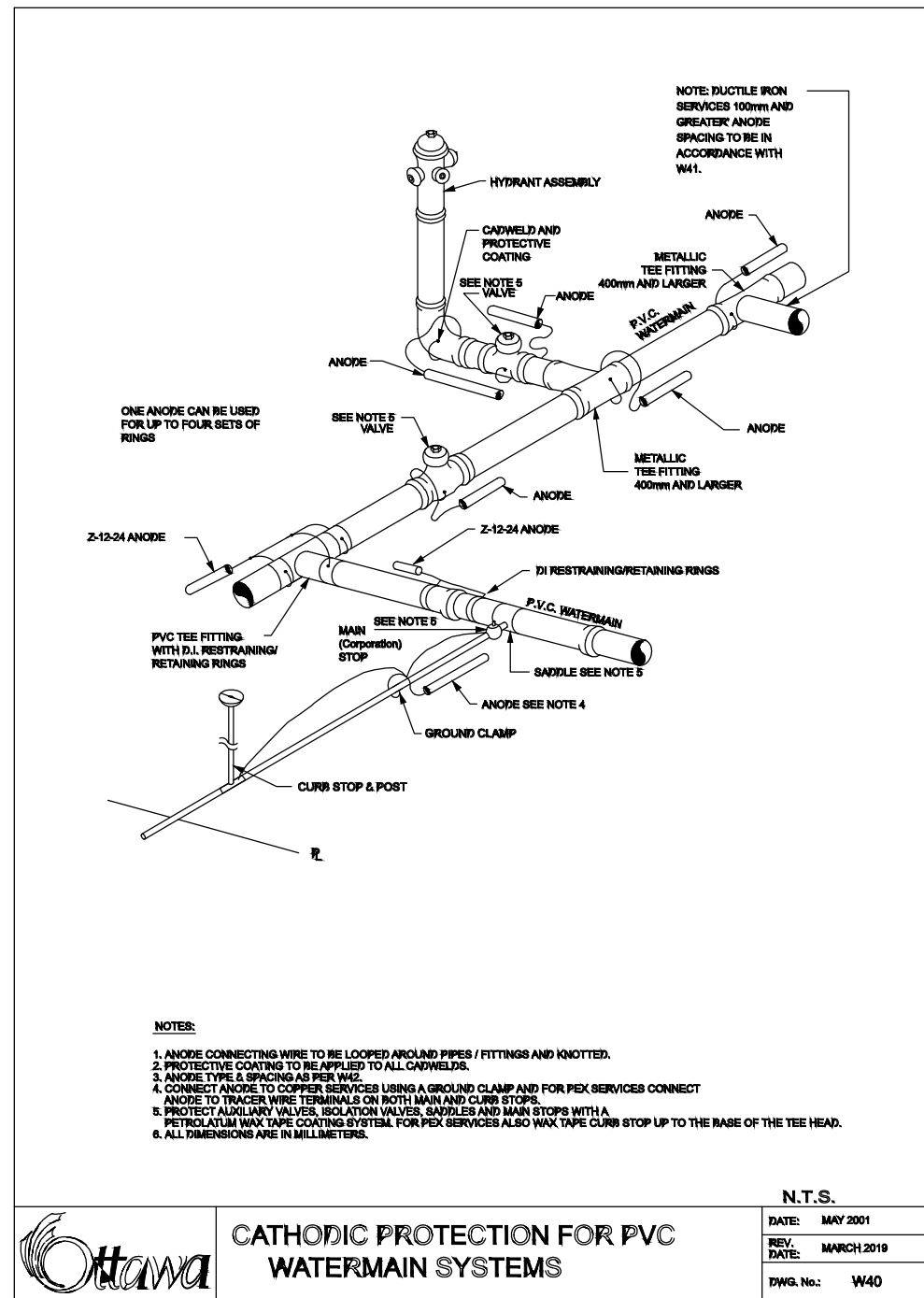


The diagram illustrates the installation of a service line over a sewer line. A watermain is shown on the left, connected to a sewer line. A service line is shown crossing over the sewer line via a catch basin. The diagram includes labels for 'MIN. EARTH COVER 2.4m', 'SERVICE', 'SEWER', and 'WATERMAIN'. Arrows indicate the flow of water and the direction of the service line.

NOTES:

- WHERE SEWER IS AT SAME ELEVATION AS WATERMAIN, SERVICES CAN BE INSTALLED OVER THE SEWER WITH A MINIMUM OF 2.4m COVER
- WHERE THE 2.4m MINIMUM COVER IS NOT POSSIBLE THE SERVICE SHALL BE INSTALLED 300mm BELOW SEWER
- FOR OPEN ENDED STRUCTURES SUCH AS CATCH BASIN LEADS, OLIVERTS, ETC., INSTALLATION SHALL BE IN ACCORDANCE WITH DETAIL 923.
- ALL DIMENSIONS ARE IN MILLIMETRES UNLESS SHOWN OTHERWISE.

DATE: MAY 2001
REV: NONE
DWG. NO.: W38



FINAL BACKFILL
SEE 3.P.F-210

2400 (MINIMUM)

300

PIPE EMBEDMENT MATERIAL

COMPACTED FILL IN ACCORDANCE WITH D-029

SEE NOTE 5

SEE NOTE 4

SEE NOTE 4

| CONDITION | WATERMAN | SERVICES |
|-----------|----------|----------|
| EARTH | 100 MM | 100 MM |
| ROCK | 300 MM | 100 MM |

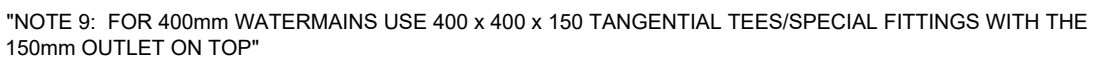
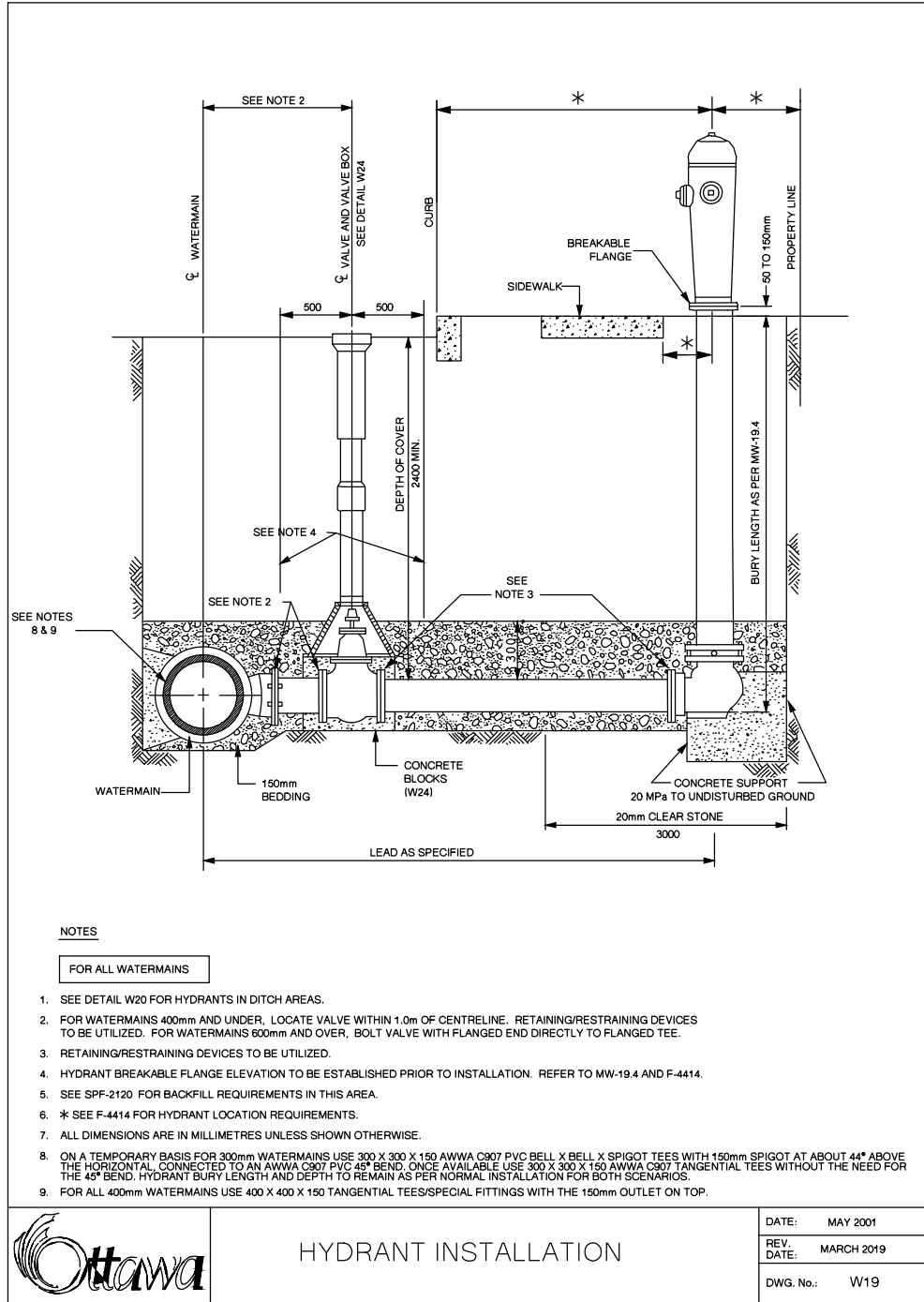
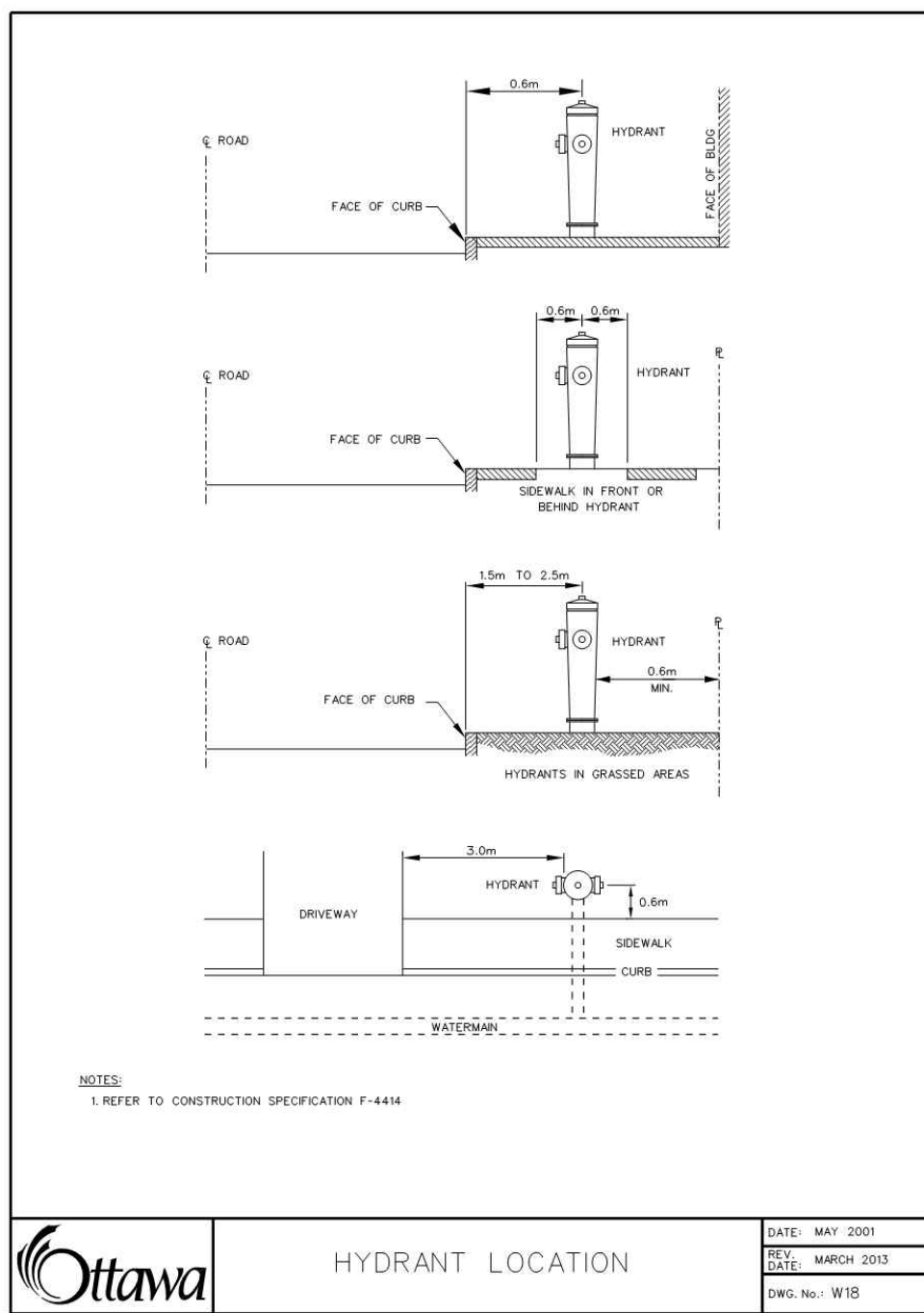
NOTES:


- PIPE EMBEDMENT MATERIAL - GRANULAR 'A'.
- FINAL BACKFILL - APPROVED NATIVE MATERIAL, OR SELECT SUBGRADE IN ACCORDANCE WITH F-210.
- ALL DIMENSIONS ARE IN MILLIMETRES UNLESS SHOWN OTHERWISE.
- | OUTSIDE DIA. | CLEARANCE (MM) |
|--------------|----------------|
| 900 & LESS | 450 |
| OVER 900 | 500 |
- WHEN APPROVED BY THE CONTRACT ADMINISTRATOR, POOR SOILS SHALL BE EXCAVATED TO CREATE A FOUNDATION THAT SHALL BE FILLED TO THE BEDDING WITH GRANULAR 'B'.

DATE: MAY 2001

REV. DATE: MARCH 2016

DWG. No.: W17



| FOR REVIEW ONLY | |
|---|--|
|  | |

NOVATECH
Engineers, Planners & Landscape Architects
Suite 200, 240 Michael Cowpland Drive
Ottawa, Ontario, Canada K2M 1P6
Telephone (613) 254-9643
Facsimile (613) 254-5867
Website www.novatech-eng.com

STANDARD DETAILS

| | |
|-------------|--------------|
| PROJECT No. | 118224-MD |
| REV | REV # 3 |
| DRAWING No. | 118224-MD-D3 |