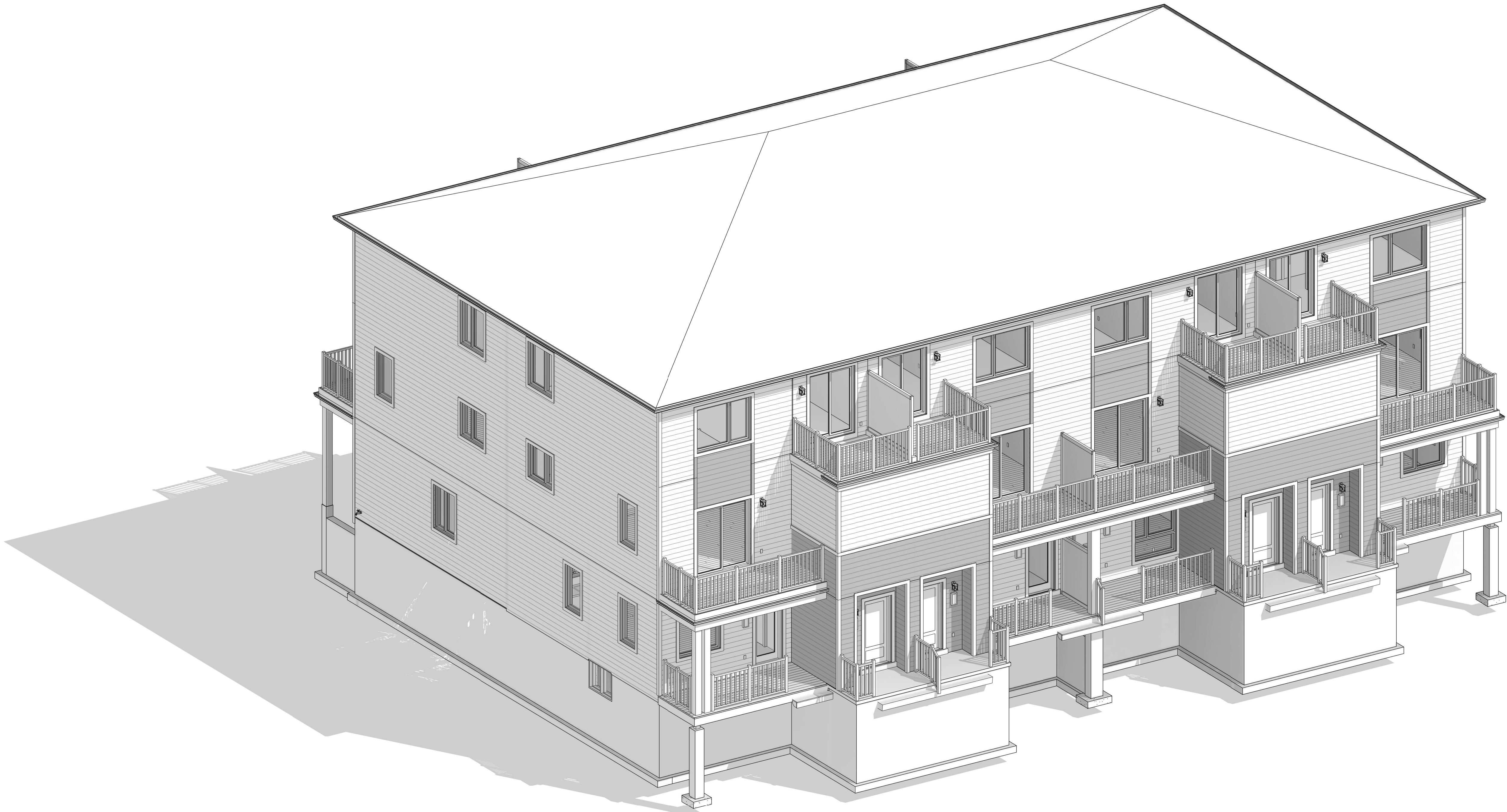


STITTSVILLE MAIN STREET - TRADITIONS II

TRANSITIONAL (TN)

The Boxwood End, The Willow,  
The Indigo, The Aster,  
2024



**ARCHITECT DISCLAIMER**  
COPYRIGHT OF THIS DRAWING AND DESIGN IS RESERVED BY THE DESIGNER. THE DRAWING AND ALL ASSOCIATED DOCUMENTS ARE AN INSTRUMENT OF SERVICE BY THE DESIGNER. THE DRAWING AND THE INFORMATION CONTAINED THEREIN MAY NOT BE REPRODUCED IN WHOLE OR IN PART WITHOUT PRIOR WRITTEN PERMISSION OF THE DESIGNER. THESE CONTRACT DOCUMENTS ARE THE PROPERTY OF THE ARCHITECT. THE ARCHITECT BEARS NO RESPONSIBILITY FOR THE INTERPRETATION OF THESE DOCUMENTS BY THE CONTRACTOR UPON WRITTEN APPLICATION THE ARCHITECT WILL PROVIDE WRITTEN/GRAPHIC CLARIFICATION OR SUPPLEMENTARY INFORMATION REGARDING THE INTENT OF THE CONTRACT DOCUMENTS. THE ARCHITECT WILL REVIEW SHOP DRAWINGS SUBMITTED BY THE CONTRACTOR FOR DESIGN CONFORMANCE ONLY. DRAWINGS ARE NOT TO BE SCALED FOR CONSTRUCTION. CONTRACTOR TO VERIFY ALL EXISTING CONDITIONS AND DIMENSIONS REQUIRED TO PERFORM THE WORK AND REPORT ANY DISCREPANCIES WITH THE CONTRACT DOCUMENTS TO THE ARCHITECT BEFORE COMMENCING WORK. POSITIONS OF EXPOSED OR FINISHED MECHANICAL OR ELECTRICAL DEVICES, FITTINGS, AND FIXTURES ARE INDICATED ON ARCHITECTURAL DRAWINGS. THE LOCATIONS SHOWN ON THE ARCHITECTURAL DRAWINGS GOVERN OVER THE MECHANICAL AND ELECTRICAL DRAWINGS. THOSE ITEMS NOT CLEARLY LOCATED WILL BE LOCATED AS DIRECTED BY THE ARCHITECT. THESE DRAWINGS ARE NOT TO BE USED FOR CONSTRUCTION UNLESS NOTED BELOW AS "ISSUED FOR CONSTRUCTION" ALL WORK TO BE CARRIED OUT IN CONFORMANCE WITH THE CODE AND BYLAWS OF THE AUTHORITIES HAVING JURISDICTION. THE DESIGNER OF THESE PLANS AND SPECIFICATIONS GIVES NO WARRANTY OR REPRESENTATION TO ANY PARTY ABOUT THE CONSTRUCTABILITY OF THE REPRESENTED BY THEM. ALL CONTRACTORS OR SUBCONTRACTORS MUST SATISFY THEMSELVES WHEN BIDDING AND AT ALL TIMES THAT THEY CAN PROPERLY CONSTRUCT THE WORK REPRESENTED BY THESE PLANS.

**ARCHITECT STAMP**



**ISSUED / REVISION CHART**

01	ISSUED FOR SPA	2025-01-20

**COVER SHEET**

STITTSVILLE MAIN STREET  
TRANSITIONAL (TN)

TRADITIONS II

CITY OF OTTAWA

CITY PLAN NO.

CITY FILE NO.

SHEET SIZE 24"x36"  
SCALE  
ISSUE DATE 2025-01-20

PAGE A0.00



FOR APPLICATION AND CONSTRUCTION INSTALLATION  
ON THE ABOVE MATERIALS SEE:  
WINDOW TRIM DETAIL, FENCE BOARD DETAILS AND OTHER  
TRIM DETAILS SHOWN ON FRONT ELEVATION SHEETS OR IN EXTERNAL  
CONSTRUCTION DETAILS SHEETS.



STUDIO

636 KING ST W,  
3RD FLOOR, TORONTO, ON,  
M5V 1M7,  
bim@bimstudio.ca

organica  
studio + inc.

architecture | interiors | design | research

7-145 BIRMINGHAM STREET,  
ETOBICOKE, ON,  
M8V3Z8  
info@organicastudio.ca  
T: 905 832 5758

#### ARCHITECT DISCLAIMER

COPYRIGHT OF THIS DRAWING AND DESIGN IS  
RESERVED BY THE DESIGNER. THE DRAWING AND  
ALL ASSOCIATED DOCUMENTS ARE AN INSTRUMENT  
OF SERVICE BY THE DESIGNER. THE DRAWING AND  
THE INFORMATION CONTAINED THEREIN MAY NOT BE  
REPRODUCED IN WHOLE OR IN PART WITHOUT  
PRIOR WRITTEN PERMISSION OF THE DESIGNER.  
THESE CONTRACT DOCUMENTS ARE THE PROPERTY  
OF THE ARCHITECT. THE ARCHITECT BEARS NO  
RESPONSIBILITY FOR THE INTERPRETATION OF  
THESE DOCUMENTS BY THE CONTRACTOR UPON  
WRITTEN APPLICATION THE ARCHITECT WILL  
PROVIDE WRITTEN/GRAPHIC CLARIFICATION OR  
SUPPLEMENTARY INFORMATION REGARDING THE  
INTENT OF THE CONTRACT DOCUMENTS. THE  
ARCHITECT WILL REVIEW SHOP DRAWINGS  
SUBMITTED BY THE CONTRACTOR FOR DESIGN  
CONFORMANCE ONLY. DRAWINGS ARE NOT TO BE  
SCALED FOR CONSTRUCTION. CONTRACTOR TO  
VERIFY ALL EXISTING CONDITIONS AND DIMENSIONS  
REQUIRED TO PERFORM THE WORK AND REPORT  
ANY DISCREPANCIES WITH THE CONTRACT  
DOCUMENTS TO THE ARCHITECT BEFORE  
COMMENCING WORK. POSITIONS OF EXPOSED OR  
FINISHED MECHANICAL OR ELECTRICAL DEVICES,  
FITTINGS, AND FIXTURES ARE INDICATED ON  
ARCHITECTURAL DRAWINGS. THE LOCATIONS  
SHOWN ON THE ARCHITECTURAL DRAWINGS  
GOVERN OVER THE MECHANICAL AND ELECTRICAL  
DRAWINGS. THOSE ITEMS NOT CLEARLY LOCATED  
WILL BE LOCATED AS DIRECTED BY THE ARCHITECT.  
THESE DRAWINGS ARE NOT TO BE USED FOR  
CONSTRUCTION UNLESS NOTED BELOW AS "ISSUED  
FOR CONSTRUCTION" ALL WORK TO BE CARRIED  
OUT IN CONFORMANCE WITH THE CODE AND  
BYLAWS OF THE AUTHORITIES HAVING  
JURISDICTION. THE DESIGNER OF THESE PLANS AND  
SPECIFICATIONS GIVES NO WARRANTY OR  
REPRESENTATION TO ANY PARTY ABOUT THE  
CONSTRUCTABILITY OF THE REPRESENTED BY  
THEM. ALL CONTRACTORS OR SUBCONTRACTORS  
MUST SATISFY THEMSELVES WHEN BIDDING AND AT  
ALL TIMES THAT THEY CAN PROPERLY CONSTRUCT  
THE WORK REPRESENTED BY THESE PLANS.

#### ARCHITECT STAMP



#### ISSUED / REVISION CHART

01	ISSUED FOR SPA	2025-01-20

## FRONT ELEVATION

STITTVILLE MAIN STREET  
TRANSITIONAL (TN)

#### TRADITIONS II

CITY OF OTTAWA

CITY PLAN NO. CITY FILE NO.

SHEET SIZE 24"x36"  
SCALE As Indicated  
ISSUE DATE 2025-01-20

PAGE A2.00



#### FRONT ELEVATION 1:50

FOR APPLICATION AND CONSTRUCTION INSTALLATION  
ON THE ABOVE MATERIALS SEE:  
WINDOW TRIM DETAIL, FENCE BOARD DETAILS AND OTHER  
TRIM DETAILS SHOWN ON FRONT ELEVATION SHEETS OR IN EXTERNAL  
CONSTRUCTION DETAILS SHEETS.

**bim**  
**STUDIO**  
636 KING ST W,  
3RD FLOOR, TORONTO, ON,  
M5V 1M7,  
bim@bimstudio.ca

**organica**  
**studio** + inc.  
architecture | interiors | design | research  
7-145 BIRMINGHAM STREET,  
ETOBICOKE, ON,  
M8V3Z8  
info@organicastudio.ca  
T: 905 832 5758

ARCHITECT DISCLAIMER

COPYRIGHT OF THIS DRAWING AND DESIGN IS  
RESERVED BY THE DESIGNER. THE DRAWING AND  
ALL ASSOCIATED DOCUMENTS ARE AN INSTRUMENT  
OF SERVICE BY THE DESIGNER. THE DRAWING AND  
THE INFORMATION CONTAINED THEREIN MAY NOT BE  
REPRODUCED IN WHOLE OR IN PART WITHOUT  
PRIOR WRITTEN PERMISSION OF THE DESIGNER.  
THESE CONTRACT DOCUMENTS ARE THE PROPERTY  
OF THE ARCHITECT. THE ARCHITECT BEARS NO  
RESPONSIBILITY FOR THE INTERPRETATION OF  
THESE DOCUMENTS BY THE CONTRACTOR UPON  
WRITTEN APPLICATION THE ARCHITECT WILL  
PROVIDE WRITTEN/GRAPHIC CLARIFICATION OR  
SUPPLEMENTARY INFORMATION REGARDING THE  
INTENT OF THE CONTRACT DOCUMENTS. THE  
ARCHITECT WILL REVIEW SHOP DRAWINGS  
SUBMITTED BY THE CONTRACTOR FOR DESIGN  
CONFORMANCE ONLY. DRAWINGS ARE NOT TO BE  
SCALED FOR CONSTRUCTION. CONTRACTOR TO  
VERIFY ALL EXISTING CONDITIONS AND DIMENSIONS  
REQUIRED TO PERFORM THE WORK AND REPORT  
ANY DISCREPANCIES WITH THE CONTRACT  
DOCUMENTS TO THE ARCHITECT BEFORE  
COMMENCING WORK. POSITIONS OF EXPOSED OR  
FINISHED MECHANICAL OR ELECTRICAL DEVICES,  
FITTINGS, AND FIXTURES ARE INDICATED ON  
ARCHITECTURAL DRAWINGS. THE LOCATIONS  
SHOWN ON THE ARCHITECTURAL DRAWINGS  
GOVERN OVER THE MECHANICAL AND ELECTRICAL  
DRAWINGS. THOSE ITEMS NOT CLEARLY LOCATED  
WILL BE LOCATED AS DIRECTED BY THE ARCHITECT.  
THESE DRAWINGS ARE NOT TO BE USED FOR  
CONSTRUCTION UNLESS NOTED BELOW AS "ISSUED  
FOR CONSTRUCTION" ALL WORK TO BE CARRIED  
OUT IN CONFORMANCE WITH THE CODE AND  
BYLAWS OF THE AUTHORITIES HAVING  
JURISDICTION. THE DESIGNER OF THESE PLANS AND  
SPECIFICATIONS GIVES NO WARRANTY OR  
REPRESENTATION TO ANY PARTY ABOUT THE  
CONSTRUCTABILITY OF THE REPRESENTED BY  
THEM. ALL CONTRACTORS OR SUBCONTRACTORS  
MUST SATISFY THEMSELVES WHEN BIDDING AND AT  
ALL TIMES THAT THEY CAN PROPERLY CONSTRUCT  
THE WORK REPRESENTED BY THESE PLANS.

ARCHITECT STAMP



ISSUED / REVISION CHART

01	ISSUED FOR SPA	2025-01-20

LEFT ELEVATION

STITTSVILLE MAIN STREET  
TRANSITIONAL (TN)

TRADITIONS II

CITY OF OTTAWA

CITY PLAN NO.

CITY FILE NO.

SHEET SIZE 24"x36"  
SCALE As Indicated  
ISSUE DATE 2025-01-20

PAGE A2.10



LEFT ELEVATION

1:50



FOR APPLICATION AND CONSTRUCTION INSTALLATION  
ON THE ABOVE MATERIALS SEE:  
WINDOW TRIM DETAIL, FREEZE BOARD DETAILS AND OTHER  
TRIM DETAILS SHOWN ON FRONT ELEVATION SHEETS OR IN EXTERNAL  
CONSTRUCTION DETAILS SHEETS.

**bim**  
**STUDIO**  
636 KING ST W,  
3RD FLOOR, TORONTO, ON,  
M5V 1M7,  
bim@bimstudio.ca

**organica**  
**studio** + inc.  
architecture | interiors | design | research  
7-145 BIRMINGHAM STREET,  
ETOBICOKE, ON,  
M8V3Z8  
info@organicastudio.ca  
T: 905 832 5758

**ARCHITECT DISCLAIMER**

COPYRIGHT OF THIS DRAWING AND DESIGN IS  
RESERVED BY THE DESIGNER. THE DRAWING AND  
ALL ASSOCIATED DOCUMENTS ARE AN INSTRUMENT  
OF SERVICE BY THE DESIGNER. THE DRAWING AND  
THE INFORMATION CONTAINED THEREIN MAY NOT BE  
REPRODUCED IN WHOLE OR IN PART WITHOUT  
PRIOR WRITTEN PERMISSION OF THE DESIGNER.  
THESE CONTRACT DOCUMENTS ARE THE PROPERTY  
OF THE ARCHITECT. THE ARCHITECT BEARS NO  
RESPONSIBILITY FOR THE INTERPRETATION OF  
THESE DOCUMENTS BY THE CONTRACTOR UPON  
WRITTEN APPLICATION THE ARCHITECT WILL  
PROVIDE WRITTEN/GRAPHIC CLARIFICATION OR  
SUPPLEMENTARY INFORMATION REGARDING THE  
INTENT OF THE CONTRACT DOCUMENTS. THE  
ARCHITECT WILL REVIEW SHOP DRAWINGS  
SUBMITTED BY THE CONTRACTOR FOR DESIGN  
CONFORMANCE ONLY. DRAWINGS ARE NOT TO BE  
SCALED FOR CONSTRUCTION. CONTRACTOR TO  
VERIFY ALL EXISTING CONDITIONS AND DIMENSIONS  
REQUIRED TO PERFORM THE WORK AND REPORT  
ANY DISCREPANCIES WITH THE CONTRACT  
DOCUMENTS TO THE ARCHITECT BEFORE  
COMMENCING WORK. POSITIONS OF EXPOSED OR  
FINISHED MECHANICAL OR ELECTRICAL DEVICES,  
FITTINGS, AND FIXTURES ARE INDICATED ON  
ARCHITECTURAL DRAWINGS. THE LOCATIONS  
SHOWN ON THE ARCHITECTURAL DRAWINGS  
GOVERN OVER THE MECHANICAL AND ELECTRICAL  
DRAWINGS. THOSE ITEMS NOT CLEARLY LOCATED  
WILL BE LOCATED AS DIRECTED BY THE ARCHITECT.  
THESE DRAWINGS ARE NOT TO BE USED FOR  
CONSTRUCTION UNLESS NOTED BELOW AS "ISSUED  
FOR CONSTRUCTION" ALL WORK TO BE CARRIED  
OUT IN CONFORMANCE WITH THE CODE AND  
BYLAWS OF THE AUTHORITIES HAVING  
JURISDICTION. THE DESIGNER OF THESE PLANS AND  
SPECIFICATIONS GIVES NO WARRANTY OR  
REPRESENTATION TO ANY PARTY ABOUT THE  
CONSTRUCTABILITY OF THE REPRESENTED BY  
THEM. ALL CONTRACTORS OR SUBCONTRACTORS  
MUST SATISFY THEMSELVES WHEN BIDDING AND AT  
ALL TIMES THAT THEY CAN PROPERLY CONSTRUCT  
THE WORK REPRESENTED BY THESE PLANS.

**ARCHITECT STAMP**



**ISSUED / REVISION CHART**

01	ISSUED FOR SPA	2025-01-20

**LEFT ELEVATION -  
UPG**

**STITTSVILLE MAIN STREET  
TRANSITIONAL (TN)**

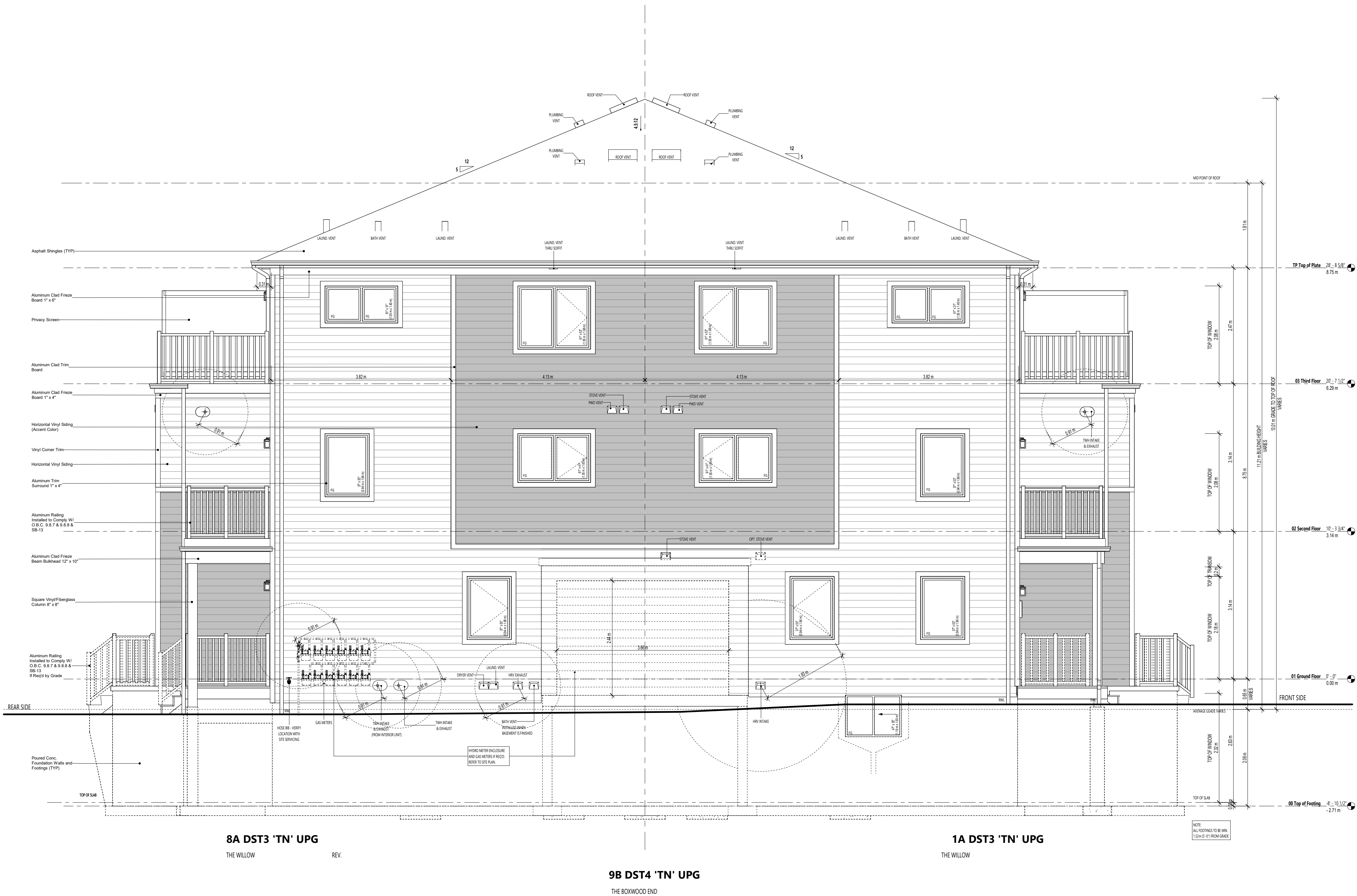
**TRADITIONS II**

CITY OF OTTAWA

CITY PLAN NO. CITY FILE NO.

SHEET SIZE 24"x36"  
SCALE As Indicated  
ISSUE DATE 2025-01-20

**PAGE A2.11**



**LEFT ELEVATION - UPG  
1:50**

FOR APPLICATION AND CONSTRUCTION INSTALLATION  
ON THE ABOVE MATERIALS SEE:  
WINDOW TRIM DETAIL, FREEZE BOARD DETAILS AND OTHER  
TRIM DETAILS SHOWN ON FRONT ELEVATION SHEETS OR IN EXTERNAL  
CONSTRUCTION DETAILS SHEETS.



636 KING ST. W.,  
3RD FLOOR, TORONTO, ON,  
M5V 1M7,  
bim@bimstudio.ca

organica  
studio + inc.

architecture | interiors | design | research  
7-145 BIRMINGHAM STREET,  
ETOBICOKE, ON,  
M8V3Z8  
info@organicastudio.ca  
T: 905 832 5758

#### ARCHITECT DISCLAIMER

COPYRIGHT OF THIS DRAWING AND DESIGN IS RESERVED BY THE DESIGNER. THE DRAWING AND ALL ASSOCIATED DOCUMENTS ARE AN INSTRUMENT OF SERVICE BY THE DESIGNER. THE DRAWING AND THE INFORMATION CONTAINED THEREIN MAY NOT BE REPRODUCED IN WHOLE OR IN PART WITHOUT PRIOR WRITTEN PERMISSION OF THE DESIGNER. THESE CONTRACT DOCUMENTS ARE THE PROPERTY OF THE ARCHITECT. THE ARCHITECT BEARS NO RESPONSIBILITY FOR THE INTERPRETATION OF THESE DOCUMENTS BY THE CONTRACTOR UPON WRITTEN APPLICATION THE ARCHITECT WILL PROVIDE WRITTEN/GRAPHIC CLARIFICATION OR SUPPLEMENTARY INFORMATION REGARDING THE INTENT OF THE CONTRACT DOCUMENTS. THE ARCHITECT WILL REVIEW SHOP DRAWINGS SUBMITTED BY THE CONTRACTOR FOR DESIGN CONFORMANCE ONLY. DRAWINGS ARE NOT TO BE SCALED FOR CONSTRUCTION. CONTRACTOR TO VERIFY ALL EXISTING CONDITIONS AND DIMENSIONS REQUIRED TO PERFORM THE WORK AND REPORT ANY DISCREPANCIES WITH THE CONTRACT DOCUMENTS TO THE ARCHITECT BEFORE COMMENCING WORK. POSITIONS OF EXPOSED OR FINISHED MECHANICAL OR ELECTRICAL DEVICES, FITTINGS, AND FIXTURES ARE INDICATED ON ARCHITECTURAL DRAWINGS. THE LOCATIONS SHOWN ON THE ARCHITECTURAL DRAWINGS GOVERN OVER THE MECHANICAL AND ELECTRICAL DRAWINGS. THOSE ITEMS NOT CLEARLY LOCATED WILL BE LOCATED AS DIRECTED BY THE ARCHITECT. THESE DRAWINGS ARE NOT TO BE USED FOR CONSTRUCTION UNLESS NOTED BELOW AS "ISSUED FOR CONSTRUCTION" ALL WORK TO BE CARRIED OUT IN CONFORMANCE WITH THE CODE AND BYLAWS OF THE AUTHORITIES HAVING JURISDICTION. THE DESIGNER OF THESE PLANS AND SPECIFICATIONS GIVES NO WARRANTY OR REPRESENTATION TO ANY PARTY ABOUT THE CONSTRUCTABILITY OF THE REPRESENTED BY THEM. ALL CONTRACTORS OR SUBCONTRACTORS MUST SATISFY THEMSELVES WHEN BIDDING AND AT ALL TIMES THAT THEY CAN PROPERLY CONSTRUCT THE WORK REPRESENTED BY THESE PLANS.

#### ARCHITECT STAMP



#### ISSUED / REVISION CHART

01	ISSUED FOR SPA	2025-01-20

## REAR ELEVATION

STITTVILLE MAIN STREET  
TRANSITIONAL (TN)

#### TRADITIONS II

CITY OF OTTAWA

CITY PLAN NO. CITY FILE NO.

SHEET SIZE 24"x36"  
SCALE As Indicated  
ISSUE DATE 2025-01-20

PAGE A2.20



#### REAR ELEVATION

1:50



FOR APPLICATION AND CONSTRUCTION INSTALLATION  
ON THE ABOVE MATERIALS SEE:  
WINDOW TRIM DETAIL, FRIeze BOARD DETAILS AND OTHER  
TRIM DETAILS SHOWN ON FRONT ELEVATION SHEETS OR IN EXTERNAL  
CONSTRUCTION DETAILS SHEETS.

**bim**  
**STUDIO**  
636 KING ST W,  
3RD FLOOR, TORONTO, ON,  
M5V 1M7,  
bim@bimstudio.ca

**organica**  
**studio** + inc.  
architecture | interiors | design | research  
7-145 BIRMINGHAM STREET,  
ETOBICOKE, ON,  
M8V3Z8  
info@organicastudio.ca  
T: 905 832 5758

ARCHITECT DISCLAIMER

COPYRIGHT OF THIS DRAWING AND DESIGN IS RESERVED BY THE DESIGNER. THE DRAWING AND ALL ASSOCIATED DOCUMENTS ARE AN INSTRUMENT OF SERVICE BY THE DESIGNER. THE DRAWING AND THE INFORMATION CONTAINED THEREIN MAY NOT BE REPRODUCED IN WHOLE OR IN PART WITHOUT PRIOR WRITTEN PERMISSION OF THE DESIGNER. THESE CONTRACT DOCUMENTS ARE THE PROPERTY OF THE ARCHITECT. THE ARCHITECT BEARS NO RESPONSIBILITY FOR THE INTERPRETATION OF THESE DOCUMENTS BY THE CONTRACTOR UPON WRITTEN APPLICATION THE ARCHITECT WILL PROVIDE WRITTEN/GRAPHIC CLARIFICATION OR SUPPLEMENTARY INFORMATION REGARDING THE INTENT OF THE CONTRACT DOCUMENTS. THE ARCHITECT WILL REVIEW SHOP DRAWINGS SUBMITTED BY THE CONTRACTOR FOR DESIGN CONFORMANCE ONLY. DRAWINGS ARE NOT TO BE SCALED FOR CONSTRUCTION. CONTRACTOR TO VERIFY ALL EXISTING CONDITIONS AND DIMENSIONS REQUIRED TO PERFORM THE WORK AND REPORT ANY DISCREPANCIES WITH THE CONTRACT DOCUMENTS TO THE ARCHITECT BEFORE COMMENCING WORK. POSITIONS OF EXPOSED OR FINISHED MECHANICAL OR ELECTRICAL DEVICES, FITTINGS, AND FIXTURES ARE INDICATED ON ARCHITECTURAL DRAWINGS. THE LOCATIONS SHOWN ON THE ARCHITECTURAL DRAWINGS GOVERN OVER THE MECHANICAL AND ELECTRICAL DRAWINGS. THOSE ITEMS NOT CLEARLY LOCATED WILL BE LOCATED AS DIRECTED BY THE ARCHITECT. THESE DRAWINGS ARE NOT TO BE USED FOR CONSTRUCTION UNLESS NOTED BELOW AS "ISSUED FOR CONSTRUCTION" ALL WORK TO BE CARRIED OUT IN CONFORMANCE WITH THE CODE AND BYLAWS OF THE AUTHORITIES HAVING JURISDICTION. THE DESIGNER OF THESE PLANS AND SPECIFICATIONS GIVES NO WARRANTY OR REPRESENTATION TO ANY PARTY ABOUT THE CONSTRUCTABILITY OF THE REPRESENTED BY THEM. ALL CONTRACTORS OR SUBCONTRACTORS MUST SATISFY THEMSELVES WHEN BIDDING AND AT ALL TIMES THAT THEY CAN PROPERLY CONSTRUCT THE WORK REPRESENTED BY THESE PLANS.

ARCHITECT STAMP



ISSUED / REVISION CHART

01	ISSUED FOR SPA	2025-01-20

RIGHT  
ELEVATION

STITTSVILLE MAIN STREET  
TRANSITIONAL (TN)

TRADITIONS II

CITY OF OTTAWA

CITY PLAN NO.

CITY FILE NO.

SHEET SIZE 24"x36"  
SCALE As Indicated  
ISSUE DATE 2025-01-20

PAGE A2.30



FOR APPLICATION AND CONSTRUCTION INSTALLATION  
ON THE ABOVE MATERIALS SEE:  
WINDOW TRIM DETAIL, FREEZE BOARD DETAILS AND OTHER  
TRIM DETAILS SHOWN ON FRONT ELEVATION SHEETS OR IN EXTERNAL  
CONSTRUCTION DETAILS SHEETS.

**bim**  
**STUDIO**  
636 KING ST W,  
3RD FLOOR, TORONTO, ON,  
M5V 1M7,  
bim@bimstudio.ca

**organica**  
**studio + inc.**  
architecture | interiors | design | research  
7-145 BIRMINGHAM STREET,  
ETOBICOKE, ON,  
M8V3Z8  
info@organicastudio.ca  
T: 905 832 5758

**ARCHITECT DISCLAIMER**  
COPYRIGHT OF THIS DRAWING AND DESIGN IS  
RESERVED BY THE DESIGNER. THE DRAWING AND  
ALL ASSOCIATED DOCUMENTS ARE AN INSTRUMENT  
OF SERVICE BY THE DESIGNER. THE DRAWING AND  
THE INFORMATION CONTAINED THEREIN MAY NOT BE  
REPRODUCED IN WHOLE OR IN PART WITHOUT  
PRIOR WRITTEN PERMISSION OF THE DESIGNER.  
THESE CONTRACT DOCUMENTS ARE THE PROPERTY  
OF THE ARCHITECT. THE ARCHITECT BEARS NO  
RESPONSIBILITY FOR THE INTERPRETATION OF  
THESE DOCUMENTS BY THE CONTRACTOR UPON  
WRITTEN APPLICATION THE ARCHITECT WILL  
PROVIDE WRITTEN/GRAPHIC CLARIFICATION OR  
SUPPLEMENTARY INFORMATION REGARDING THE  
INTENT OF THE CONTRACT DOCUMENTS. THE  
ARCHITECT WILL REVIEW SHOP DRAWINGS  
SUBMITTED BY THE CONTRACTOR FOR DESIGN  
CONFORMANCE ONLY. DRAWINGS ARE NOT TO BE  
SCALED FOR CONSTRUCTION. CONTRACTOR TO  
VERIFY ALL EXISTING CONDITIONS AND DIMENSIONS  
REQUIRED TO PERFORM THE WORK AND REPORT  
ANY DISCREPANCIES WITH THE CONTRACT  
DOCUMENTS TO THE ARCHITECT BEFORE  
COMMENCING WORK. POSITIONS OF EXPOSED OR  
FINISHED MECHANICAL OR ELECTRICAL DEVICES,  
FITTINGS, AND FIXTURES ARE INDICATED ON  
ARCHITECTURAL DRAWINGS. THE LOCATIONS  
SHOWN ON THE ARCHITECTURAL DRAWINGS  
GOVERN OVER THE MECHANICAL AND ELECTRICAL  
DRAWINGS. THOSE ITEMS NOT CLEARLY LOCATED  
WILL BE LOCATED AS DIRECTED BY THE ARCHITECT.  
THESE DRAWINGS ARE NOT TO BE USED FOR  
CONSTRUCTION UNLESS NOTED BELOW AS "ISSUED  
FOR CONSTRUCTION" ALL WORK TO BE CARRIED  
OUT IN CONFORMANCE WITH THE CODE AND  
BYLAWS OF THE AUTHORITIES HAVING  
JURISDICTION. THE DESIGNER OF THESE PLANS AND  
SPECIFICATIONS GIVES NO WARRANTY OR  
REPRESENTATION TO ANY PARTY ABOUT THE  
CONSTRUCTABILITY OF THE REPRESENTED BY  
THEM. ALL CONTRACTORS OR SUBCONTRACTORS  
MUST SATISFY THEMSELVES WHEN BIDDING AND AT  
ALL TIMES THAT THEY CAN PROPERLY CONSTRUCT  
THE WORK REPRESENTED BY THESE PLANS.

**ARCHITECT STAMP**



**ISSUED / REVISION CHART**

01	ISSUED FOR SPA	2025-01-20

**RIGHT  
ELEVATION - UPG**

**STITTSVILLE MAIN STREET  
TRANSITIONAL (TN)**

**TRADITIONS II**

CITY OF OTTAWA

CITY PLAN NO.

CITY FILE NO.

SHEET SIZE 24"x36"  
SCALE As Indicated  
ISSUE DATE 2025-01-20

**PAGE A2.31**



**RIGHT ELEVATION - UPG**  
**1:50**