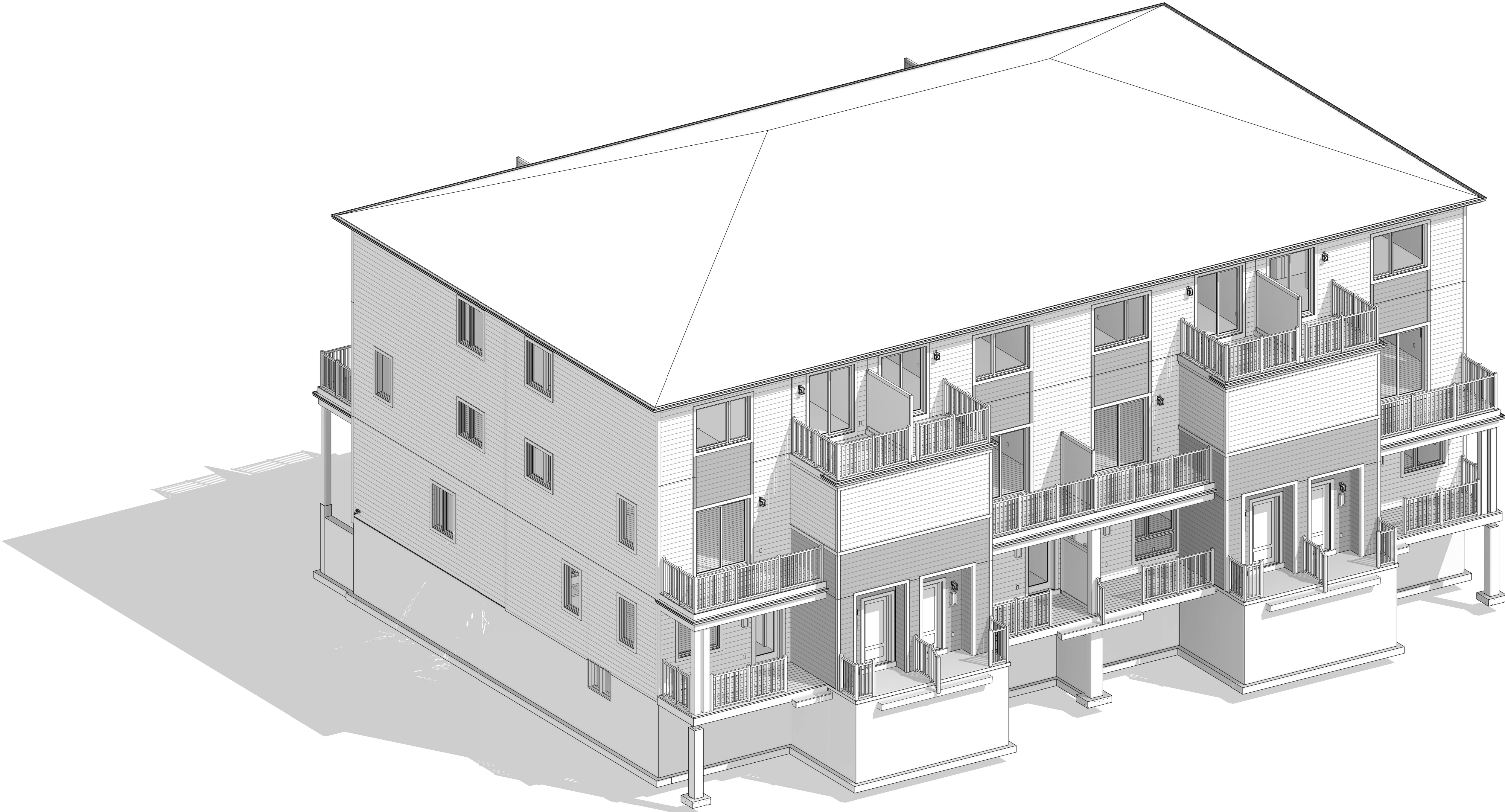


ALLISON HAMLIN  
MANAGER, DEVELOPMENT REVIEW ALL WARDS  
PLANNING, DEVELOPMENT & BUILDING SERVICES  
DEPARTMENT, CITY OF OTTAWA

APPROVED  
By Allison Hamlin at 10:58 am, Aug 21, 2025

STITTSTVILLE MAIN STREET - TRADITIONS II  
TRANSITIONAL (TN)  
The Boxwood End, The Willow,  
The Indigo, The Aster,  
2024



**bim**  
**STUDIO**  
636 KING ST W,  
3RD FLOOR, TORONTO, ON,  
M5V 1M7,  
bim@bimstudio.ca

**organica**  
**studio** + inc.  
architecture | interiors | design | research  
7-145 BIRMINGHAM STREET,  
ETOBICOKE, ON,  
M8V3Z8  
info@organicastudio.ca  
T: 905 832 5758

**ARCHITECT DISCLAIMER**  
COPYRIGHT OF THIS DRAWING AND DESIGN IS RESERVED BY THE DESIGNER. THE DRAWING AND ALL ASSOCIATED DOCUMENTS ARE AN INSTRUMENT OF SERVICE BY THE DESIGNER. THE DRAWING AND THE INFORMATION CONTAINED THEREIN MAY NOT BE REPRODUCED IN WHOLE OR IN PART WITHOUT PRIOR WRITTEN PERMISSION OF THE DESIGNER. THESE CONTRACT DOCUMENTS ARE THE PROPERTY OF THE ARCHITECT. THE ARCHITECT BEARS NO RESPONSIBILITY FOR THE INTERPRETATION OF THESE DOCUMENTS BY THE CONTRACTOR UPON WRITTEN APPLICATION THE ARCHITECT WILL PROVIDE WRITTEN/GRAPHIC CLARIFICATION OR SUPPLEMENTARY INFORMATION REGARDING THE INTENT OF THE CONTRACT DOCUMENTS. THE ARCHITECT WILL REVIEW SHOP DRAWINGS SUBMITTED BY THE CONTRACTOR FOR DESIGN CONFORMANCE ONLY. DRAWINGS ARE NOT TO BE SCALED FOR CONSTRUCTION. CONTRACTOR TO VERIFY ALL EXISTING CONDITIONS AND DIMENSIONS REQUIRED TO PERFORM THE WORK AND REPORT ANY DISCREPANCIES WITH THE CONTRACT DOCUMENTS TO THE ARCHITECT BEFORE COMMENCING WORK. POSITIONS OF EXPOSED OR FINISHED MECHANICAL OR ELECTRICAL DEVICES, FITTINGS, AND FIXTURES ARE INDICATED ON ARCHITECTURAL DRAWINGS. THE LOCATIONS SHOWN ON THE ARCHITECTURAL DRAWINGS GOVERN OVER THE MECHANICAL AND ELECTRICAL DRAWINGS. THOSE ITEMS NOT CLEARLY LOCATED WILL BE LOCATED AS DIRECTED BY THE ARCHITECT. THESE DRAWINGS ARE NOT TO BE USED FOR CONSTRUCTION UNLESS NOTED BELOW AS "ISSUED FOR CONSTRUCTION" ALL WORK TO BE CARRIED OUT IN CONFORMANCE WITH THE CODE AND BYLAWS OF THE AUTHORITIES HAVING JURISDICTION. THE DESIGNER OF THESE PLANS AND SPECIFICATIONS GIVES NO WARRANTY OR REPRESENTATION TO ANY PARTY ABOUT THE CONSTRUCTABILITY OF THE REPRESENTED BY THEM. ALL CONTRACTORS OR SUBCONTRACTORS MUST SATISFY THEMSELVES WHEN BIDDING AND AT ALL TIMES THAT THEY CAN PROPERLY CONSTRUCT THE WORK REPRESENTED BY THESE PLANS.

ARCHITECT STAMP



ISSUED / REVISION CHART		
01	ISSUED FOR SPA	2025-01-20

COVER SHEET

STITTSTVILLE MAIN STREET  
TRANSITIONAL (TN)

TRADITIONS II

CITY OF OTTAWA

CITY PLAN NO.	CITY FILE NO.
SHEET SIZE 24"x36"	PAGE A0.00
SCALE	
ISSUE DATE 2025-01-20	



ALLISON HAMLIN  
MANAGER , DEVELOPMENT REVIEW ALL WARDS  
PLANNING, DEVELOPMENT & BUILDING SERVICES  
DEPARTMENT, CITY OF OTTAWA

APPROVED  
By Allison Hamlin at 10:58 am, Aug 21, 2025

FOR APPLICATION AND CONSTRUCTION INSTALLATION  
ON THE ABOVE MATERIALS SEE:  
WINDOW TYP DETAIL, FREEZE BOARD DETAILS AND OTHER  
TYPICAL DETAILS SHOWN ON FRONT ELEVATION SHEETS OR IN EXTERNAL  
CONSTRUCTION DETAILS SHEETS.

STUDIO

636 KING ST W,  
3RD FLOOR, TORONTO, ON,  
M5V 1M7,  
bim@bimstudio.ca

organica

studio + inc.

architecture | interiors | design | research

7-145 BIRMINGHAM STREET,  
ETOBICOKE, ON,  
M8V3Z8  
info@organicastudio.ca  
T: 905 832 5758

**ARCHITECT DISCLAIMER**  
COPYRIGHT OF THIS DRAWING AND DESIGN IS RESERVED BY THE DESIGNER. THE DRAWING AND ALL ASSOCIATED DOCUMENTS ARE AN INSTRUMENT OF SERVICE BY THE DESIGNER. THE DRAWING AND THE INFORMATION CONTAINED THEREIN MAY NOT BE REPRODUCED IN WHOLE OR IN PART WITHOUT PRIOR WRITTEN PERMISSION OF THE DESIGNER. THESE CONTRACT DOCUMENTS ARE THE PROPERTY OF THE ARCHITECT. THE ARCHITECT BEARS NO RESPONSIBILITY FOR THE INTERPRETATION OF THESE DOCUMENTS BY THE CONTRACTOR UPON WRITTEN APPLICATION THE ARCHITECT WILL PROVIDE WRITTEN/GRAPHIC CLARIFICATION OR SUPPLEMENTARY INFORMATION REGARDING THE INTENT OF THE CONTRACT DOCUMENTS. THE ARCHITECT WILL REVIEW SHOP DRAWINGS SUBMITTED BY THE CONTRACTOR FOR DESIGN CONFORMANCE ONLY. DRAWINGS ARE NOT TO BE SCALED FOR CONSTRUCTION. CONTRACTOR TO VERIFY ALL EXISTING CONDITIONS AND DIMENSIONS REQUIRED TO PERFORM THE WORK AND REPORT ANY DISCREPANCIES WITH THE CONTRACT DOCUMENTS TO THE ARCHITECT BEFORE COMMENCING WORK. POSITIONS OF EXPOSED OR FINISHED MECHANICAL OR ELECTRICAL DEVICES, FITTINGS, AND FIXTURES ARE INDICATED ON ARCHITECTURAL DRAWINGS. THE LOCATIONS SHOWN ON THE ARCHITECTURAL DRAWINGS GOVERN OVER THE MECHANICAL AND ELECTRICAL DRAWINGS. THOSE ITEMS NOT CLEARLY LOCATED WILL BE LOCATED AS DIRECTED BY THE ARCHITECT. THESE DRAWINGS ARE NOT TO BE USED FOR CONSTRUCTION UNLESS NOTED BELOW AS "ISSUED FOR CONSTRUCTION" ALL WORK TO BE CARRIED OUT IN CONFORMANCE WITH THE CODE AND BYLAWS OF THE AUTHORITIES HAVING JURISDICTION. THE DESIGNER OF THESE PLANS AND SPECIFICATIONS GIVES NO WARRANTY OR REPRESENTATION TO ANY PARTY ABOUT THE CONSTRUCTABILITY OF THE REPRESENTED BY THEM. ALL CONTRACTORS OR SUBCONTRACTORS MUST SATISFY THEMSELVES WHEN BIDDING AND AT ALL TIMES THAT THEY CAN PROPERLY CONSTRUCT THE WORK REPRESENTED BY THESE PLANS.

ARCHITECT STAMP

ISSUED / REVISION CHART

DT	ISSUED FOR SPA	2025-01-20

FRONT  
ELEVATION

STITTVILLE MAIN STREET  
TRANSITIONAL (TN)

TRADITIONS II

CITY OF OTTAWA

CITY PLAN NO. CITY FILE NO.

SHEET SIZE 24"x36"  
SCALE As Indicated  
ISSUE DATE 2025-01-20

PAGE A2.00

FRONT ELEVATION  
1:50

*Allison Hamlin*

---

**ALLISON HAMLIN  
MANAGER , DEVELOPMENT REVIEW ALL WARDS  
PLANNING , DEVELOPMENT & BUILDING SERVICES  
DEPARTMENT, CITY OF OTTAWA**

*By Allison Hamlin at 10:58 am, Aug 21, 2025*

---

FOR APPLICATION AND CONSTRUCTION INSTALLATION  
ON THE ABOVE MATERIALS SEE:  
WINDOW TRIM DETAIL, FRIEZE BOARD DETAILS AND OTHER  
TRIM DETAILS SHOWN ON FRONT ELEVATION SHEETS OR IN EXTERNA  
CONSTRUCTION DETAILS SHEETS.



# STUDIO

636 KING ST W,  
3RD FLOOR, TORONTO, ON  
M5V 1M7,  
bim@bimstudio.ca

**organica**  
studio + inc.

architecture | interiors | design | research

7-145 BIRMINGHAM STREET,  
TERRACOTTA, OH

ETOBICOKE, ON,  
M8V3Z8

info@organicastudio.ca

T: 905 832 5758

**ARCHITECT DISCLAIMER**

COPIES OF THIS DRAWING AND DESIGN IS  
RECEIVED BY THE DESIGNER. THE DRAWING AND  
ALL ASSOCIATED DOCUMENTS ARE AN INSTRUMENT  
OF SERVICE BY THE DESIGNER. THE DRAWING AND  
THE INFORMATION CONTAINED THEREIN SHALL NOT BE  
REPRODUCED IN WHOLE OR IN PART WITHOUT  
PRIOR WRITTEN PERMISSION OF THE DESIGNER.  
THESE CONTRACT DOCUMENTS ARE THE PROPERTY  
OF THE ARCHITECT. THE ARCHITECT BEARS NO  
RESPONSIBILITY FOR THE LOSS OF OR DAMAGE TO  
THESE DOCUMENTS BY THE CONTRACTOR UPON  
THEIR APPLICATION. THE ARCHITECT WILL  
PROVIDE WRITTEN GRAPHIC CLARIFICATION OR  
SUPPLEMENTARY INFORMATION REGARDING THE  
MEANING OF ANY DISCREPANCY OF THE  
ARCHITECT WILL REVIEW. SHOP DRAWINGS  
SUBMITTED BY THE CONTRACTOR FOR DESIGN  
CONFORMANCE ONLY. DRAWINGS ARE NOT TO BE  
SCALED FOR CONSTRUCTION. CONTRACTOR TO  
VERIFY ALL EXISTING CONDITIONS AND DIMENSIONS  
AND DISCREPANCIES TO THE CONTRACTOR. REPORT  
ANY DISCREPANCIES WITH THE CONTRACT  
DOCUMENTS TO THE ARCHITECT BEFORE  
COMMENCING WORK. POSITIONS OF EXPOSED OR  
FINISHED MECHANICAL OR ELECTRICAL DEVICES,  
FITTINGS AND EQUIPMENT TO BE SHOWN ON  
ARCHITECTURAL DRAWINGS. THE LOCATIONS  
SHOWN ON THE ARCHITECTURAL DRAWINGS  
GOVERN OVER THE MECHANICAL AND ELECTRICAL  
DRAWINGS. THOSE ITEMS NOT CLEARLY LOCATED  
ON THE ARCHITECTURAL DRAWINGS SHOULD BE  
LOCATED BY THE CONTRACTOR. THESE DRAWINGS ARE NOT TO BE USED FOR  
CONSTRUCTION UNLESS NOTED BELOW AS "ISSUED  
FOR CONSTRUCTION" ALL WORK TO BE CARRIED  
OUT IN CONFORMANCE WITH THE CODE AND  
LAW OF THE JURISDICTION. THE DESIGNER OF THESE PLANS AND  
SPECIFICATIONS GIVES NO WARRANTY OR  
REPRESENTATION TO ANY PARTY ABOUT THE  
CONSTRUCTIBILITY OF THE REPRESENTED BY  
THEM. ALL CONTRACTORS OR SUBCONTRACTORS  
SHOULD BE ADVISED THAT THE CONTRACTOR AND AT  
ALL TIMES THAT THEY CAN PROPERLY CONSTRUCT  
THE WORK REPRESENTED BY THESE PLANS.

**ARCHITECT STAMP**



### ISSUED / REVISION CHART

[illegible]

## LEFT ELEVATION

## STITTSVILLE MAIN STREET TRANSITIONAL (TN)

## TRADITIONS II

CITY OF OTTAWA

CITY PLAN NO.

CITY FILE NO.

SHEET SIZE 24"x36"  
SCALE As indicated  
ISSUE DATE 2025-01-20

**PAGE A2.10**



Attamlin

ALLISON HAMLIN  
MANAGER , DEVELOPMENT REVIEW ALL WARDS  
PLANNING, DEVELOPMENT & BUILDING SERVICES  
DEPARTMENT, CITY OF OTTAWA

APPROVED

By Allison Hamlin at 10:58 am, Aug 21, 2025

FOR APPLICATION AND CONSTRUCTION INSTALLATION  
ON THE ABOVE MATERIALS SEE:  
WINDOW TRIM DETAIL, FENCE BOARD DETAILS AND OTHER  
TRIM DETAILS SHOWN ON FRONT ELEVATION SHEETS OR IN EXTERNAL  
CONSTRUCTION DETAILS SHEETS.



STUDIO

636 KING ST W,  
3RD FLOOR, TORONTO, ON,  
M5V 1M7,  
bim@bimstudio.ca

organica  
studio + inc.

architecture | interiors | design | research

7-145 BIRMINGHAM STREET,  
ETOBICOKE, ON,  
M8V3Z8  
info@organicastudio.ca  
T: 905 832 5758

#### ARCHITECT DISCLAIMER

COPYRIGHT OF THIS DRAWING AND DESIGN IS RESERVED BY THE DESIGNER. THE DRAWING AND ALL ASSOCIATED DOCUMENTS ARE AN INSTRUMENT OF SERVICE BY THE DESIGNER. THE DRAWING AND THE INFORMATION CONTAINED THEREIN MAY NOT BE REPRODUCED IN WHOLE OR IN PART WITHOUT PRIOR WRITTEN PERMISSION OF THE DESIGNER. THESE CONTRACT DOCUMENTS ARE THE PROPERTY OF THE ARCHITECT. THE ARCHITECT BEARS NO RESPONSIBILITY FOR THE INTERPRETATION OF THESE DOCUMENTS BY THE CONTRACTOR UPON WRITTEN APPLICATION THE ARCHITECT WILL PROVIDE WRITTEN/GRAPHIC CLARIFICATION OR SUPPLEMENTARY INFORMATION REGARDING THE INTENT OF THE CONTRACT DOCUMENTS. THE ARCHITECT WILL REVIEW SHOP DRAWINGS SUBMITTED BY THE CONTRACTOR FOR DESIGN CONFORMANCE ONLY. DRAWINGS ARE NOT TO BE SCALED FOR CONSTRUCTION. CONTRACTOR TO VERIFY ALL EXISTING CONDITIONS AND DIMENSIONS REQUIRED TO PERFORM THE WORK AND REPORT ANY DISCREPANCIES WITH THE CONTRACT DOCUMENTS TO THE ARCHITECT BEFORE COMMENCING WORK. POSITIONS OF EXPOSED OR FINISHED MECHANICAL OR ELECTRICAL DEVICES, FITTINGS, AND FIXTURES ARE INDICATED ON ARCHITECTURAL DRAWINGS. THE LOCATIONS SHOWN ON THE ARCHITECTURAL DRAWINGS GOVERN OVER THE MECHANICAL AND ELECTRICAL DRAWINGS. THOSE ITEMS NOT CLEARLY LOCATED WILL BE LOCATED AS DIRECTED BY THE ARCHITECT. THESE DRAWINGS ARE NOT TO BE USED FOR CONSTRUCTION UNLESS NOTED BELOW AS "ISSUED FOR CONSTRUCTION" ALL WORK TO BE CARRIED OUT IN CONFORMANCE WITH THE CODE AND BYLAWS OF THE AUTHORITIES HAVING JURISDICTION. THE DESIGNER OF THESE PLANS AND SPECIFICATIONS GIVES NO WARRANTY OR REPRESENTATION TO ANY PARTY ABOUT THE CONSTRUCTABILITY OF THE REPRESENTED BY THEM. ALL CONTRACTORS OR SUBCONTRACTORS MUST SATISFY THEMSELVES WHEN BIDDING AND AT ALL TIMES THAT THEY CAN PROPERLY CONSTRUCT THE WORK REPRESENTED BY THESE PLANS.

#### ARCHITECT STAMP



#### ISSUED / REVISION CHART

01	ISSUED FOR SPA	2025-01-20

## LEFT ELEVATION - UPG

STITTSVILLE MAIN STREET  
TRANSITIONAL (TN)

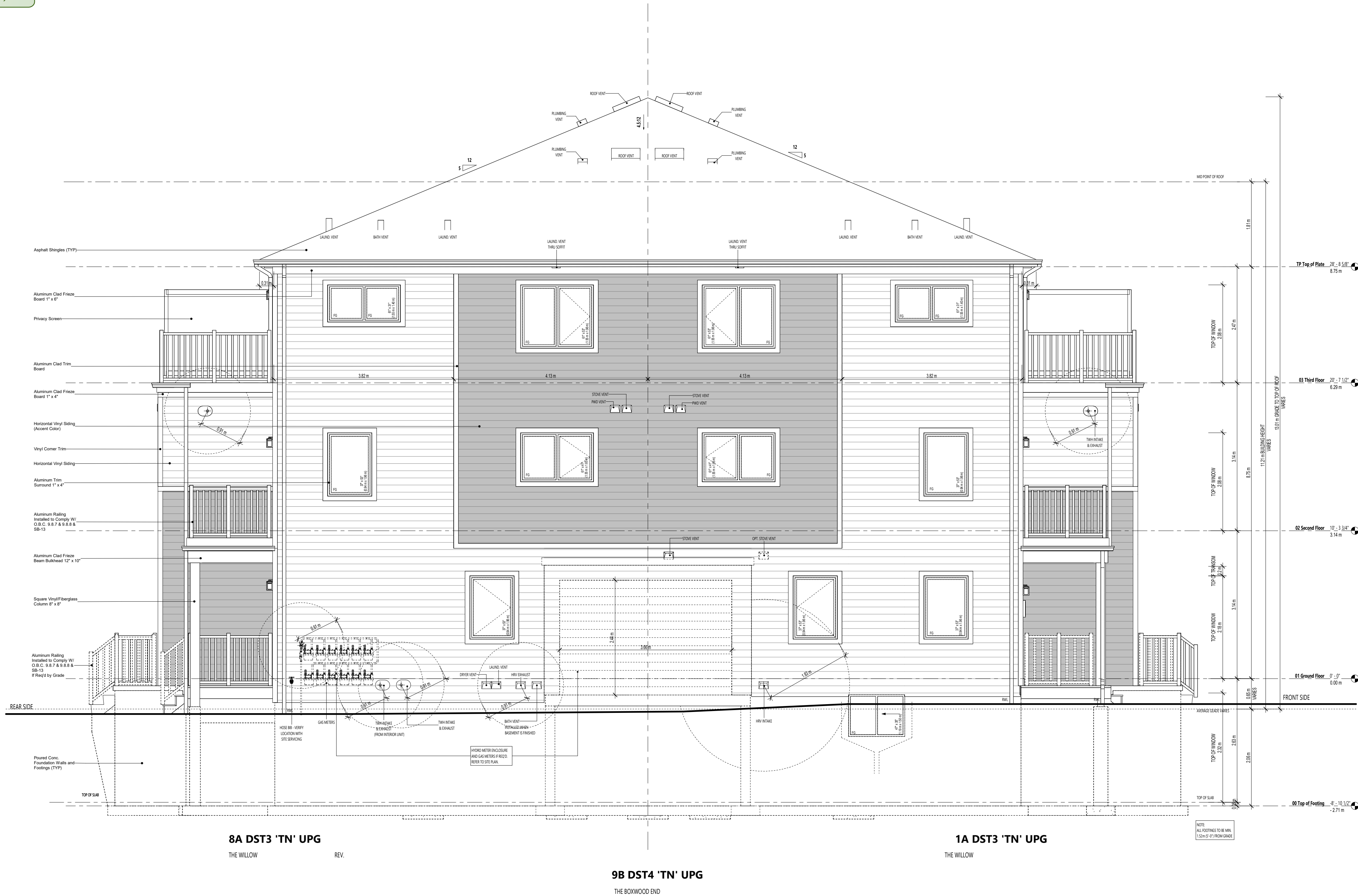
TRADITIONS II

CITY OF OTTAWA

CITY PLAN NO. CITY FILE NO.

SHEET SIZE 24"x36"  
SCALE As Indicated  
ISSUE DATE 2025-01-20

PAGE A2.11



#### LEFT ELEVATION - UPG

1:50

Hamlin

ALLISON HAMLIN  
MANAGER , DEVELOPMENT REVIEW ALL WARDS  
PLANNING, DEVELOPMENT & BUILDING SERVICES  
DEPARTMENT, CITY OF OTTAWA

APPROVED

By Allison Hamlin at 10:58 am, Aug 21, 2025

FOR APPLICATION AND CONSTRUCTION INSTALLATION  
ON THE ABOVE MATERIALS SEE:  
WINDOW TRIM DETAIL, FRIeze BOARD DETAILS AND OTHER  
TRIM DETAILS SHOWN ON FRONT ELEVATION SHEETS OR IN EXTERNAL  
CONSTRUCTION DETAILS SHEETS.



STUDIO

636 KING ST W,  
3RD FLOOR, TORONTO, ON,  
M5V 1M7,  
bim@bimstudio.ca

organica  
studio + inc.

architecture | interiors | design | research

7-145 BIRMINGHAM STREET,  
ETOBICOKE, ON,  
M8V3Z8  
info@organicastudio.ca  
T: 905 832 5758

#### ARCHITECT DISCLAIMER

COPYRIGHT OF THIS DRAWING AND DESIGN IS  
RESERVED BY THE DESIGNER. THE DRAWING AND  
ALL ASSOCIATED DOCUMENTS ARE AN INSTRUMENT  
OF SERVICE BY THE DESIGNER. THE DRAWING AND  
THE INFORMATION CONTAINED THEREIN MAY NOT BE  
REPRODUCED IN WHOLE OR IN PART WITHOUT  
PRIOR WRITTEN PERMISSION OF THE DESIGNER.  
THESE CONTRACT DOCUMENTS ARE THE PROPERTY  
OF THE ARCHITECT. THE ARCHITECT BEARS NO  
RESPONSIBILITY FOR THE INTERPRETATION OF  
THESE DOCUMENTS BY THE CONTRACTOR UPON  
WRITTEN APPLICATION THE ARCHITECT WILL  
PROVIDE WRITTEN/GRAPHIC CLARIFICATION OR  
SUPPLEMENTARY INFORMATION REGARDING THE  
INTENT OF THE CONTRACT DOCUMENTS. THE  
ARCHITECT WILL REVIEW SHOP DRAWINGS  
SUBMITTED BY THE CONTRACTOR FOR DESIGN  
CONFORMANCE ONLY. DRAWINGS ARE NOT TO BE  
SCALED FOR CONSTRUCTION. CONTRACTOR TO  
VERIFY ALL EXISTING CONDITIONS AND DIMENSIONS  
REQUIRED TO PERFORM THE WORK AND REPORT  
ANY DISCREPANCIES WITH THE CONTRACT  
DOCUMENTS TO THE ARCHITECT BEFORE  
COMMENCING WORK. POSITIONS OF EXPOSED OR  
FINISHED MECHANICAL OR ELECTRICAL DEVICES,  
FITTINGS, AND FIXTURES ARE INDICATED ON  
ARCHITECTURAL DRAWINGS. THE LOCATIONS  
SHOWN ON THE ARCHITECTURAL DRAWINGS  
GOVERN OVER THE MECHANICAL AND ELECTRICAL  
DRAWINGS. THOSE ITEMS NOT CLEARLY LOCATED  
WILL BE LOCATED AS DIRECTED BY THE ARCHITECT.  
THESE DRAWINGS ARE NOT TO BE USED FOR  
CONSTRUCTION UNLESS NOTED BELOW AS "ISSUED  
FOR CONSTRUCTION" ALL WORK TO BE CARRIED  
OUT IN CONFORMANCE WITH THE CODE AND  
BYLAWS OF THE AUTHORITIES HAVING  
JURISDICTION. THE DESIGNER OF THESE PLANS AND  
SPECIFICATIONS GIVES NO WARRANTY OR  
REPRESENTATION TO ANY PARTY ABOUT THE  
CONSTRUCTABILITY OF THE REPRESENTED BY  
THEM. ALL CONTRACTORS OR SUBCONTRACTORS  
MUST SATISFY THEMSELVES WHEN BIDDING AND AT  
ALL TIMES THAT THEY CAN PROPERLY CONSTRUCT  
THE WORK REPRESENTED BY THESE PLANS.

#### ARCHITECT STAMP



#### ISSUED / REVISION CHART

01	ISSUED FOR SPA	2025-01-20

## REAR ELEVATION

STITTVILLE MAIN STREET  
TRANSITIONAL (TN)

TRADITIONS II

CITY OF OTTAWA

CITY PLAN NO. CITY FILE NO.

SHEET SIZE 24"x36"  
SCALE As Indicated  
ISSUE DATE 2025-01-20

PAGE A2.20



5A DST3 'TN'

THE WILLOW

6A DST1 'TN'

THE ASTER REV.

7A DST1 'TN'

THE ASTER

8A DST3 'TN'

THE WILLOW REV.

12B DST4 'TN'

THE BOXWOOD END REV.

11B DST2 'TN'

THE INDIGO

10B DST2 'TN'

THE INDIGO REV.

9B DST4 'TN'

THE BOXWOOD END

#### REAR ELEVATION

1:50



**ALLISON HAMLIN  
MANAGER , DEVELOPMENT REVIEW ALL WARDS  
PLANNING, DEVELOPMENT & BUILDING SERVICES  
DEPARTMENT, CITY OF OTTAWA**

*By Allison Hamlin at 10:58 am, Aug 21, 2025*



# STUDIO

636 KING ST W,  
3RD FLOOR, TORONTO, ON  
M5V 1M7,  
bim@bimstudio.ca

organica  
studio + inc.

architecture | interiors | design | research

7-145 BIRMINGHAM STREET,  
ETOBICOKE, ON,  
M8V3Z8

info@organicastudio.ca  
T: 905 832 5758

## ARCHITECT DISCLAIMER

COPYRIGHT OF THIS DRAWING AND DESIGN IS  
 RESERVED BY THE DESIGNER. THE DRAWING AND  
 ALL ASSOCIATED DOCUMENTS ARE AN INSTRUMENT  
 OF SERVICE BY THE DESIGNER. THE DRAWING AND  
 ALL ASSOCIATED DOCUMENTS MAY NOT BE  
 REPRODUCED IN WHOLE OR IN PART WITHOUT  
 PRIOR WRITTEN PERMISSION OF THE DESIGNER.  
 THESE CONTRACT DOCUMENTS ARE THE PROPERTY  
 OF THE ARCHITECT. THE ARCHITECT BEARS NO  
 RESPONSIBILITY FOR THE LOSS OF OR DAMAGE TO  
 THESE DOCUMENTS BY THE CONTRACTOR UPON  
 WRITTEN APPLICATION BY THE CONTRACTOR. THE  
 ARCHITECT WILL PROVIDE WRITTEN GRAPHIC CLARIFICATION OR  
 SUPPLEMENTARY INFORMATION REGARDING THE  
 INTENT OF THE CONTRACT DOCUMENTS. THE  
 ARCHITECT'S RESPONSIBILITY SHALL NOT BE  
 SUBMITTED BY THE CONTRACTOR FOR DESIGN  
 CONFORMANCE ONLY. DRAWINGS ARE NOT TO BE  
 SCALED FOR CONSTRUCTION. CONTRACTOR TO  
 VERIFY ALL EXISTING CONDITIONS AND DIMENSIONS  
 BEFORE CONSTRUCTION. CONTRACTOR TO REPORT  
 ANY DISCREPANCIES WITH THE CONTRACT  
 DOCUMENTS TO THE ARCHITECT BEFORE  
 COMMENCING WORK. POSITIONS OF EXPOSED OR  
 FINISHED MECHANICAL OR ELECTRICAL DEVICES,  
 FIXTURES, AND EQUIPMENT SHALL BE SHOWN ON  
 ARCHITECTURAL DRAWINGS. THE LOCATIONS  
 SHOWN ON THE ARCHITECTURAL DRAWINGS  
 GOVERN OVER THE MECHANICAL AND ELECTRICAL  
 DRAWINGS. THOSE ITEMS NOT CLEARLY LOCATED  
 WILL BE LOCATED AND LOCATED BY THE ARCHITECT.  
 DIMENSIONS ARE NOT TO BE USED FOR  
 CONSTRUCTION UNLESS NOTED BELOW AS "ISSUED  
 FOR CONSTRUCTION" ALL WORK TO BE CARRIED  
 OUT IN CONFORMANCE WITH THE CODE AND  
 BYLAWS OF THE AUTHORITIES HAVING  
 JURISDICTION. THE ARCHITECT'S PLANS AND  
 SPECIFICATIONS GIVES NO WARRANTY OR  
 REPRESENTATION TO ANY PARTY ABOUT THE  
 CONSTRUCTIBILITY OF THE REPRESENTED BY  
 THEM. ALL CONTRACTORS OR SUBCONTRACTORS  
 MUST SATISFY THE REQUIREMENTS OF THE CODES AND AT  
 ALL TIMES THAT THEY CAN PROPERLY CONSTRUCT  
 THE WORK REPRESENTED BY THESE PLANS.

## ARCHITECT STAMP



### ISSUED / REVISION CHART

[illegible]

## RIGHT ELEVATION

## STITTSVILLE MAIN STREET TRANSITIONAL (TN)

## TRADITIONS II

CITY OF OTTAWA

CITY PLAN NO.

SHEET SIZE 24"x36"  
SCALE As indicated  
ISSUE DATE 2025-01-21

**PAGE A2.30**



### RIGHT ELEVATION

**1:50**

ALLISON HAMLIN  
MANAGER, DEVELOPMENT REVIEW ALL WARDS  
PLANNING, DEVELOPMENT & BUILDING SERVICES  
DEPARTMENT, CITY OF OTTAWA

APPROVED  
By Allison Hamlin at 10:58 am, Aug 21, 2025

FOR APPLICATION AND CONSTRUCTION INSTALLATION  
ON THE ABOVE MATERIALS SEE:  
WINDOW TYP DETAIL, FENCE BOARD DETAILS AND OTHER  
TYPICAL DETAILS SHOWN ON FRONT ELEVATION SHEETS OR IN EXTERNAL  
CONSTRUCTION DETAILS SHEETS.

bim  
STUDIO  
636 KING ST W,  
3RD FLOOR, TORONTO, ON,  
M5V 1M7,  
bim@bimstudio.ca

organica  
studio + inc.  
architecture | interiors | design | research  
7-145 BIRMINGHAM STREET,  
ETOBICOKE, ON,  
M8V3Z8  
info@organicastudio.ca  
T: 905 832 5758

ARCHITECT DISCLAIMER  
COPYRIGHT OF THIS DRAWING AND DESIGN IS  
RESERVED BY THE DESIGNER. THE DRAWING AND  
ALL ASSOCIATED DOCUMENTS ARE AN INSTRUMENT  
OF SERVICE BY THE DESIGNER. THE DRAWING AND  
THE INFORMATION CONTAINED THEREIN MAY NOT BE  
REPRODUCED IN WHOLE OR IN PART WITHOUT  
PRIOR WRITTEN PERMISSION OF THE DESIGNER.  
THESE CONTRACT DOCUMENTS ARE THE PROPERTY  
OF THE ARCHITECT. THE ARCHITECT BEARS NO  
RESPONSIBILITY FOR THE INTERPRETATION OF  
THESE DOCUMENTS BY THE CONTRACTOR UPON  
WRITTEN APPLICATION THE ARCHITECT WILL  
PROVIDE WRITTEN/GRAPHIC CLARIFICATION OR  
SUPPLEMENTARY INFORMATION REGARDING THE  
INTENT OF THE CONTRACT DOCUMENTS. THE  
ARCHITECT WILL REVIEW SHOP DRAWINGS  
SUBMITTED BY THE CONTRACTOR FOR DESIGN  
CONFORMANCE ONLY. DRAWINGS ARE NOT TO BE  
SCALED FOR CONSTRUCTION. CONTRACTOR TO  
VERIFY ALL EXISTING CONDITIONS AND DIMENSIONS  
REQUIRED TO PERFORM THE WORK AND REPORT  
ANY DISCREPANCIES WITH THE CONTRACT  
DOCUMENTS TO THE ARCHITECT BEFORE  
COMMENCING WORK. POSITIONS OF EXPOSED OR  
FINISHED MECHANICAL OR ELECTRICAL DEVICES,  
FITTINGS, AND FIXTURES ARE INDICATED ON  
ARCHITECTURAL DRAWINGS. THE LOCATIONS  
SHOWN ON THE ARCHITECTURAL DRAWINGS  
GOVERN OVER THE MECHANICAL AND ELECTRICAL  
DRAWINGS. THOSE ITEMS NOT CLEARLY LOCATED  
WILL BE LOCATED AS DIRECTED BY THE ARCHITECT.  
THESE DRAWINGS ARE NOT TO BE USED FOR  
CONSTRUCTION UNLESS NOTED BELOW AS "ISSUED  
FOR CONSTRUCTION" ALL WORK TO BE CARRIED  
OUT IN CONFORMANCE WITH THE CODE AND  
BYLAWS OF THE AUTHORITIES HAVING  
JURISDICTION. THE DESIGNER OF THESE PLANS AND  
SPECIFICATIONS GIVES NO WARRANTY OR  
REPRESENTATION TO ANY PARTY ABOUT THE  
CONSTRUCTABILITY OF THE REPRESENTED BY  
THEM. ALL CONTRACTORS OR SUBCONTRACTORS  
MUST SATISFY THEMSELVES WHEN BIDDING AND AT  
ALL TIMES THAT THEY CAN PROPERLY CONSTRUCT  
THE WORK REPRESENTED BY THESE PLANS.

ARCHITECT STAMP



ISSUED / REVISION CHART

01	ISSUED FOR SPA	2025-01-20

RIGHT  
ELEVATION - UPG

STITTSTVILLE MAIN STREET  
TRANSITIONAL (TN)

TRADITIONS II

CITY OF OTTAWA

CITY PLAN NO.

CITY FILE NO.

SHEET SIZE 24"x36"  
SCALE As Indicated  
ISSUE DATE 2025-01-20

PAGE A2.31

